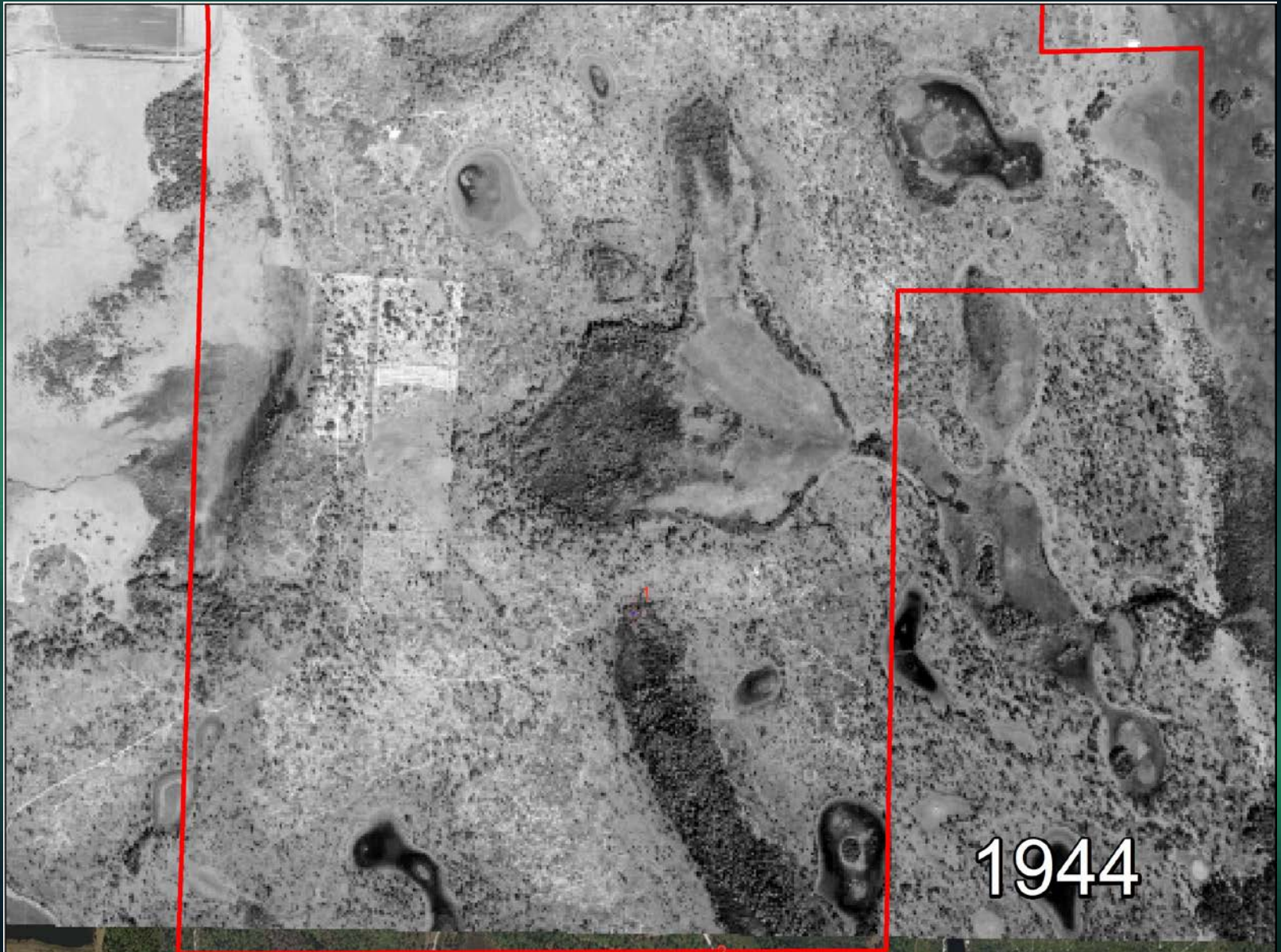


# Split Oak Preserve Long Term Perspective



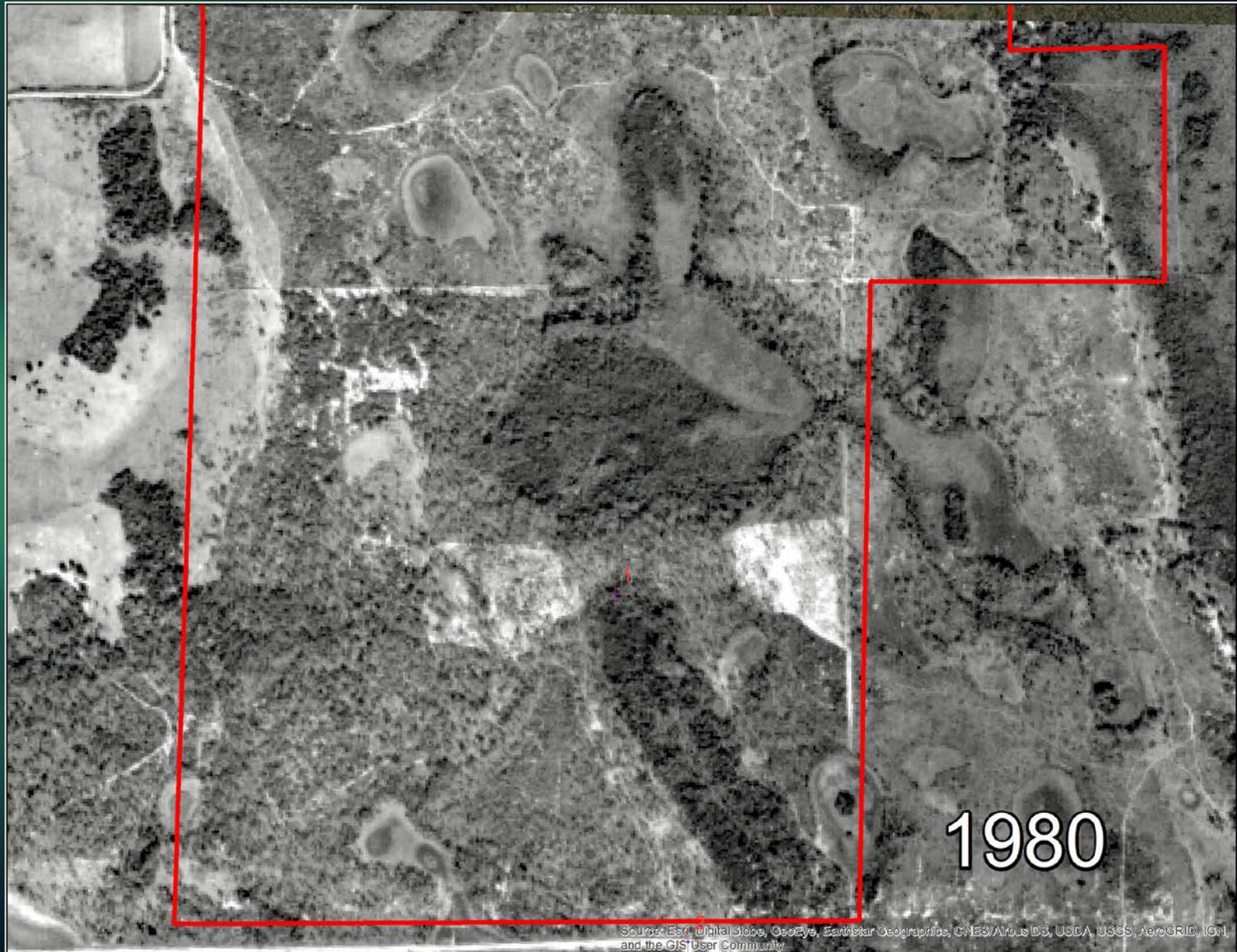
# Split Oak Preserve in 1944



# Split Oak Preserve in 1959

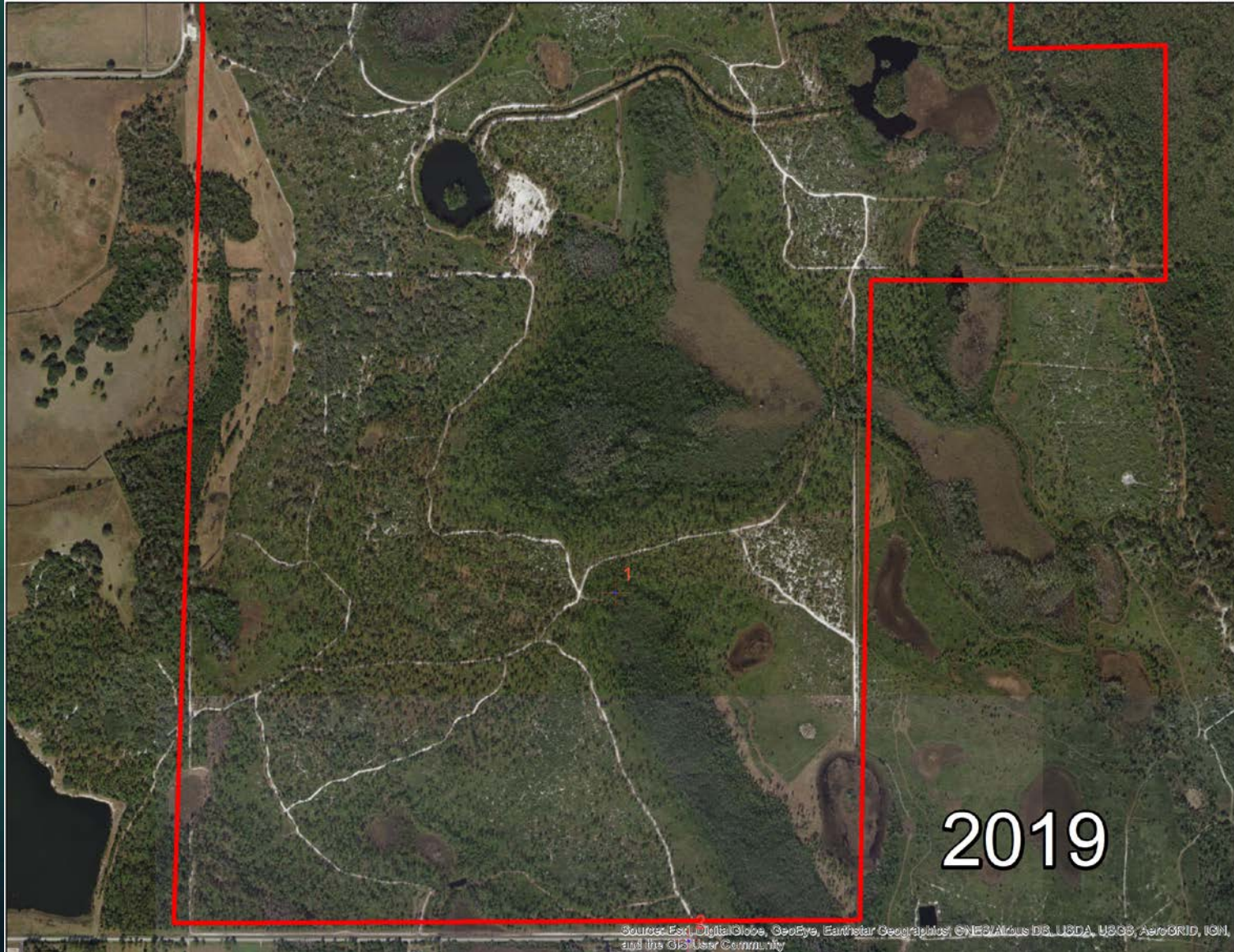


# Split Oak Preserve in 1980



Source: Esri, DigitalGlobe, GeoEye, Earthstar Geographics, CNES/Airbus DS, USDA, USGS, AeroGRID, IGN, and the GIS User Community

# Split Oak Preserve in 2019



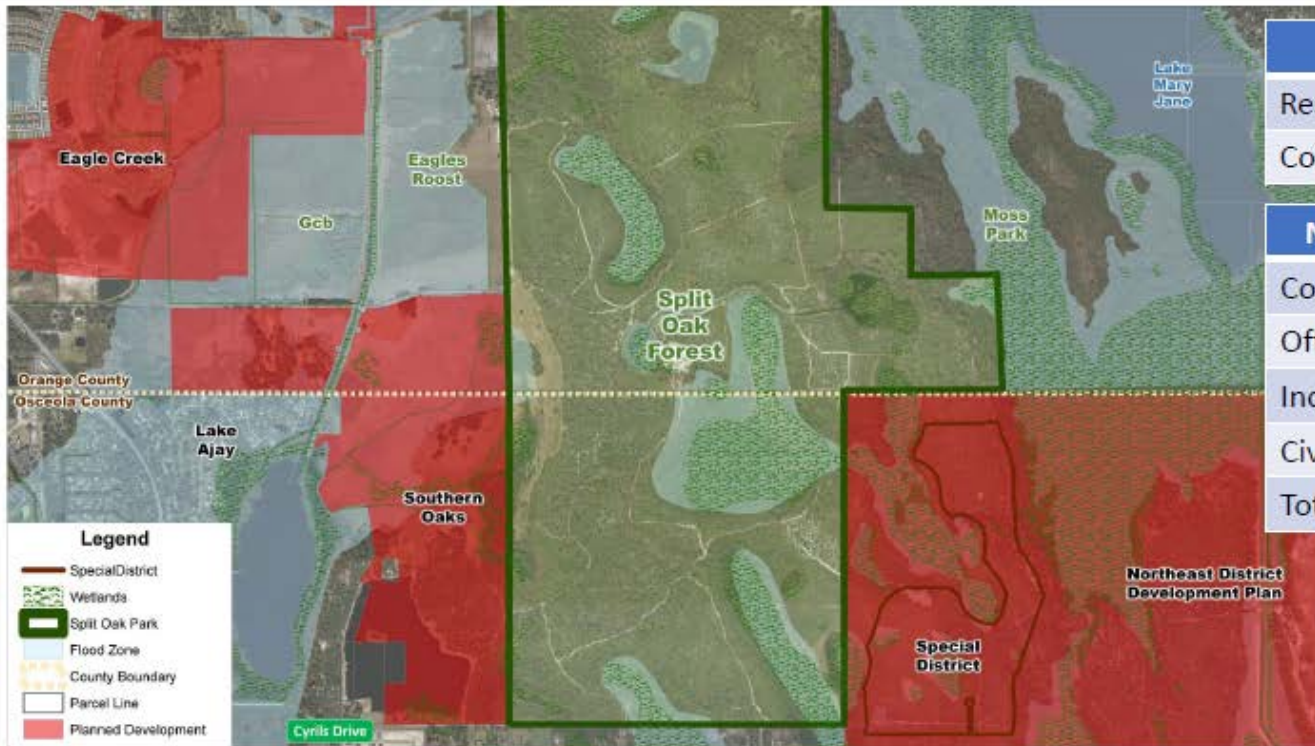
Source: Esri, DigitalGlobe, GeoEye, Earthstar Geographics, CNES/Airbus DS, USDA, USGS, AeroGRID, IGN, and the GIS User Community

# Split Oak walled in by future development...

## Osceola Parkway Extension

### Planned Development Surrounding Split Oak Forest

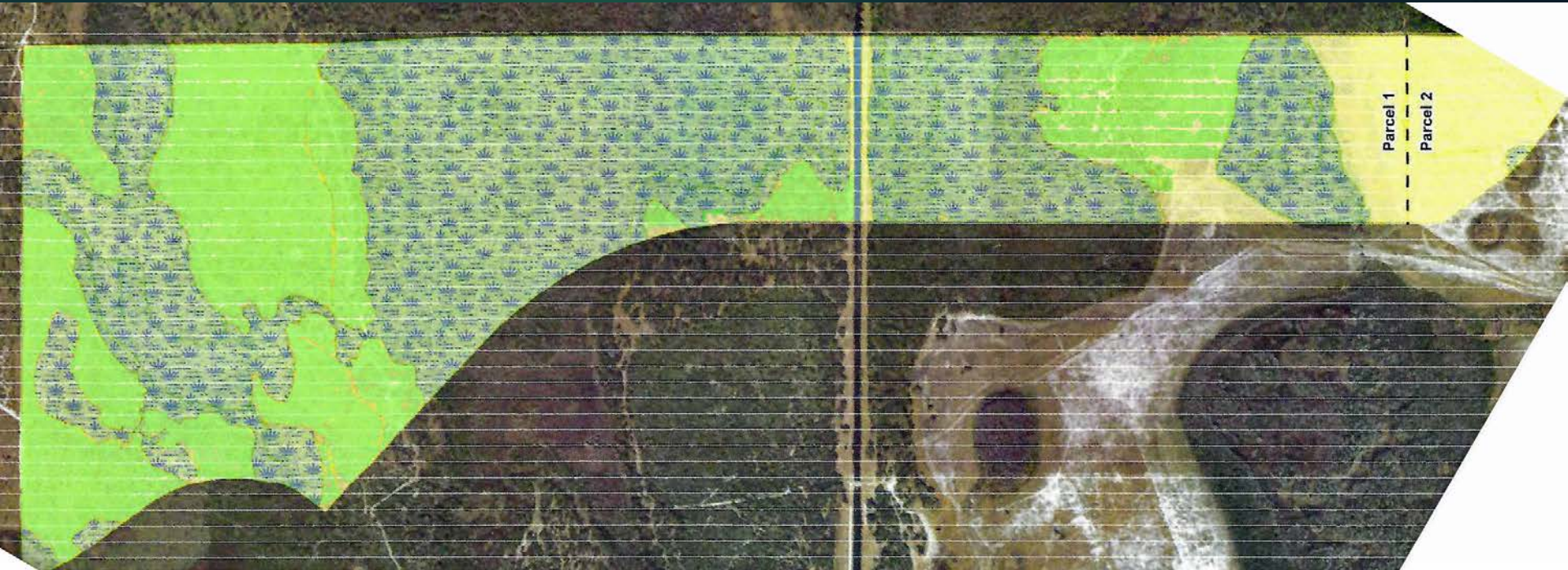
4



Southern Oaks	
Residential Units	882
Commercial (sf)	200,800

Northwest Special District	
Commercial (sf)	80,000
Office (sf)	1,700,000
Industrial (sf)	1,000,000
Civic (sf)	120,000
Total (sf)	2,900,000

# Osceola Co. good quality pine/scrub within 1,550 acres



Good quality uplands/pine/scrub in light green  
Lands in yellow in need of active restoration.

# Orange County longleaf pine needing management



Pineland  
area in light  
green needs  
immediate  
management  
Lands in  
yellow need  
active  
restoration.



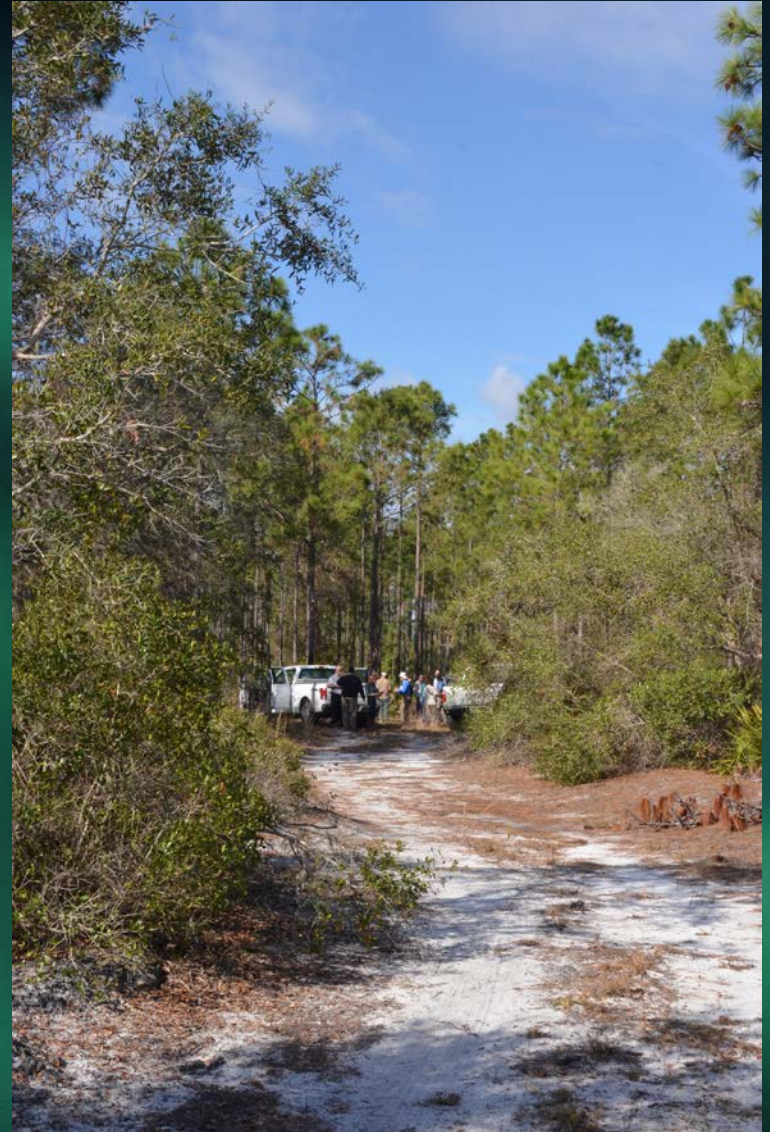
# Scrub within 1,550 acres to be dedicated



# Pineland Habitat in 1,550 acre dedication



# Pine and scrubby pine on 1,550 acs.



# Scrub and pine interface on 1,550 ac



# Typical good habitat on 1,550 acres



# Typical relatively undisturbed habitat on 1,550 acres



**Foreground disturbed area, background undisturbed cypress wetland in 1,550 ac.**



1,550 acres of new conservation land AND the existing conservation tracts MUST have influx of funding for RESTORATION and MANAGEMENT.

- Exact amount determined by FWC, FCT, DSL and Osceola County
- Likely in range of \$2 – 3 million for restoration
- Management funding 10-15 years at least \$200,000 per year