



Interoffice Memorandum

Received September 24, 2020 @5:10pm

Publish Date: October 11, 2020

Deadline to the O.S: October 6, 2020

DATE: September 23, 2020

TO: Katie A. Smith, Deputy Clerk of the Board of County Commissioners, County Comptroller's Office

THROUGH: Cheryl Gillespie, Supervisor, Agenda Development Office

FROM: Lisette M. Egipciaco, Development Coordinator Planning Division *LME*

CONTACT PERSON(S): **Lisette M. Egipciaco,**
Development Coordinator
Planning Division 407-836-5684
Lisette.Egipciaco@ocfl.net

SUBJECT: Request for Board of County Commissioners Public Hearing

Project Name: Old Cheney 10 Preliminary Subdivision Plan
Case # PSP-20-01-020

Type of Hearing: Preliminary Subdivision Plan

Applicant(s): Albert Bustamante
Fekany Brothers Enterprise
4174 Evander Drive
Orlando, Florida 32812

Commission District: 5

General Location: North of Old Cheney Highway / East of Truman Road

Parcel ID #(s) 21-22-30-0000-00-048

of Posters: 1

Use: 10 Attached Single-Family Residential Dwelling Units

Size / Acreage: 0.87

BCC Public Hearing
Required by: Orange County Code, Chapter 34, Article III,
Section 34-69 and Chapter 30, Article III, Section
30-89

Clerk's Advertising
Requirements: (1) At least 7 days before the BCC public hearing
date, publish an advertisement in the Legal
Notices section of *The Orlando Sentinel*
describing the particular request, the general
location of the subject property, and the date,
time, and place when the BCC public hearing will
be held;

and

(2) At least 7 days before the BCC public
hearing date, send notices of BCC public hearing
by U.S. mail to owners of property within 300 feet
of the subject property and beyond.

Spanish Contact Person: Para más información referente a esta vista
pública, favor de comunicarse con la División de
Planificación (Planning Division) al número 407-
836-8181.

Advertising Language:

This Preliminary Subdivision Plan (PSP) is a request to subdivide 0.87 acres in order to construct 10 single-family residential dwelling units; District 5; North of Old Cheney Highway / East of Truman Road.

Material Provided:

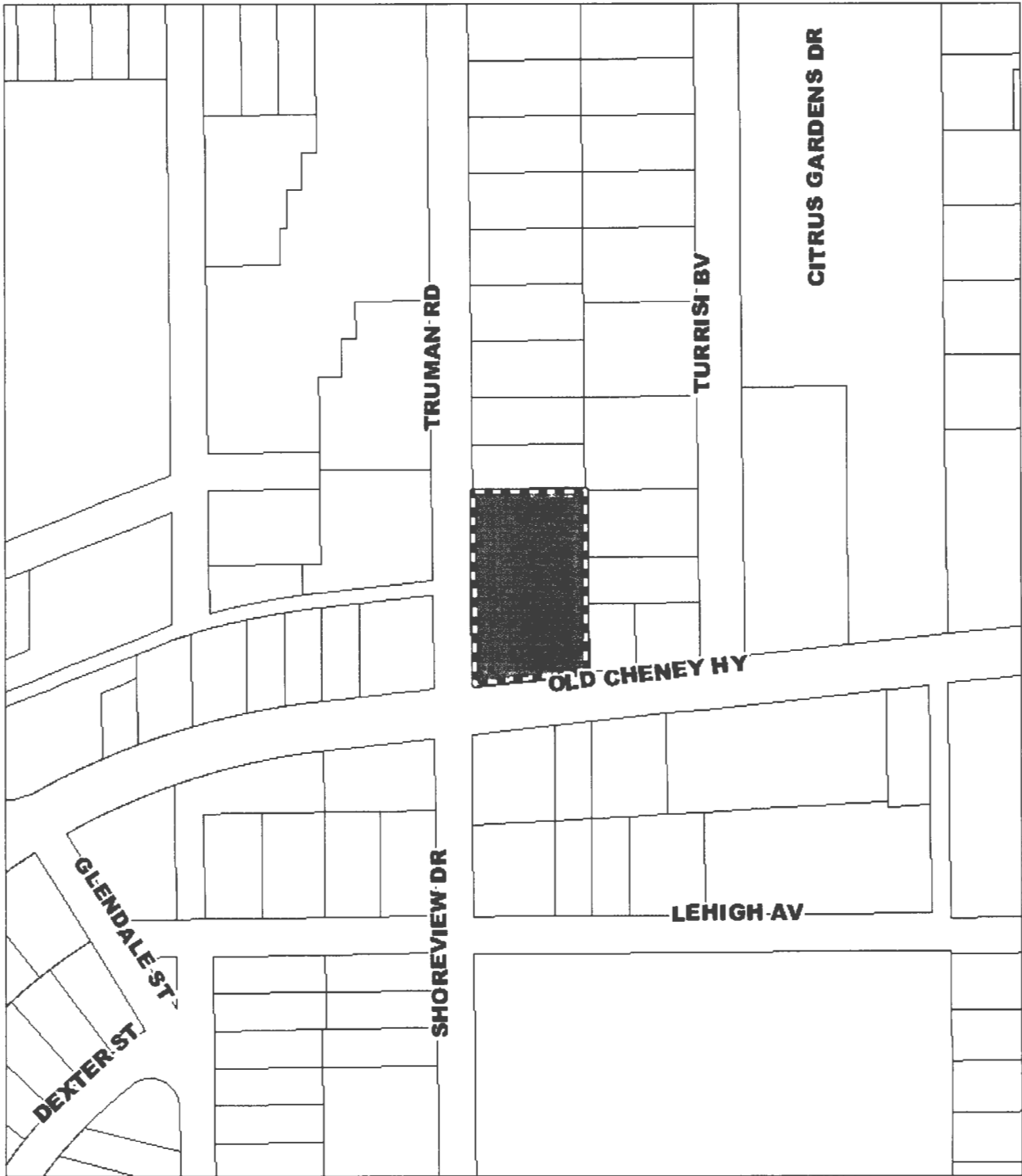
- (1) Names and last known addresses of property owners (*via email from Fiscal and Operational Support Division*);
- (2) Location map (*to be mailed to property owners*);
- (3) Site plan sheet (*to be mailed to property owners*).

Special Instructions to Clerk (if any):

Unless stated otherwise, the public hearing should be advertised to begin at 2:00 p.m., or as soon thereafter as the matter may be heard.

Please notify Lisette Egipciano of the scheduled date and time. The Planning Division will notify the applicant.

Attachments (location map and site plan sheet)



 Subject Property



1 inch = 175 feet

If you have any questions regarding this map, please call the Planning Division at 407-836-5600.

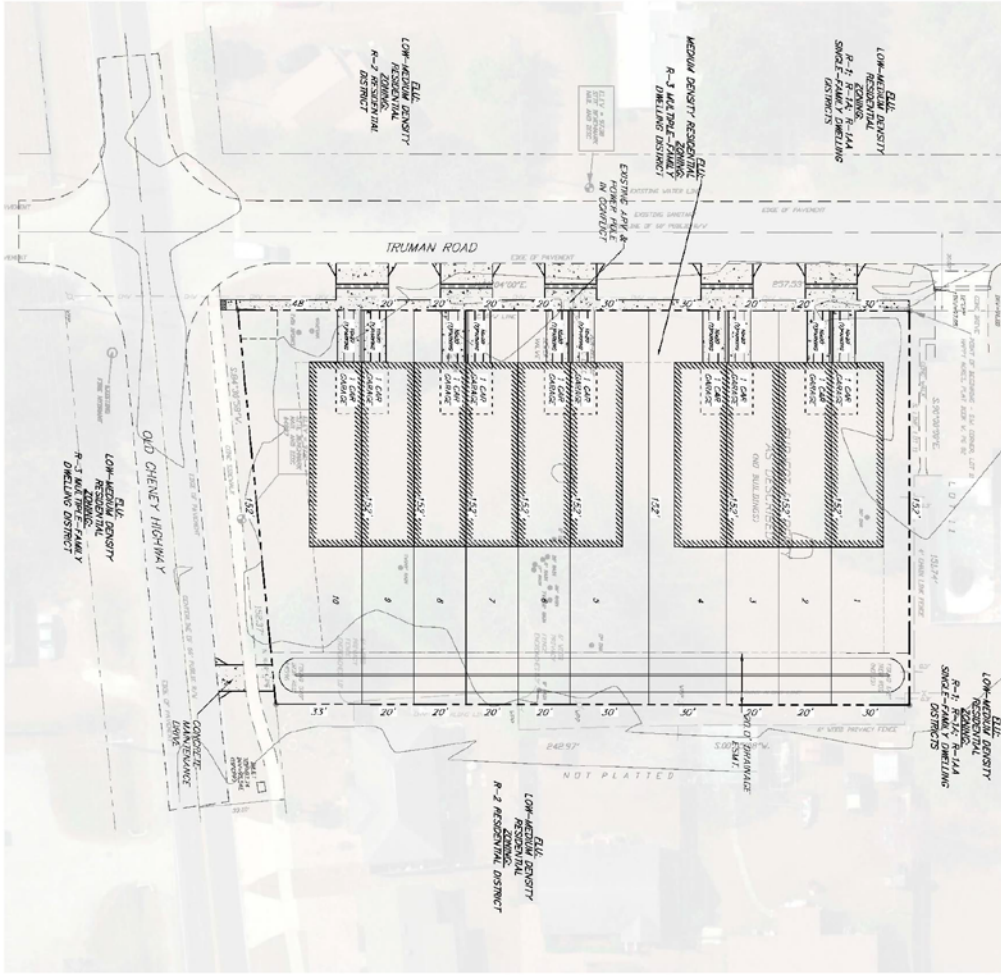


EXHIBIT TABLE

EXHIBIT NUMBER	DESCRIPTION
1	1.00 SITE PLAN
2	2.00 CONCEPTUAL SITE PLAN
3	3.00 CONCEPTUAL SITE PLAN
4	4.00 CONCEPTUAL SITE PLAN
5	5.00 CONCEPTUAL SITE PLAN
6	6.00 CONCEPTUAL SITE PLAN
7	7.00 CONCEPTUAL SITE PLAN
8	8.00 CONCEPTUAL SITE PLAN
9	9.00 CONCEPTUAL SITE PLAN
10	10.00 CONCEPTUAL SITE PLAN
11	11.00 CONCEPTUAL SITE PLAN
12	12.00 CONCEPTUAL SITE PLAN
13	13.00 CONCEPTUAL SITE PLAN
14	14.00 CONCEPTUAL SITE PLAN
15	15.00 CONCEPTUAL SITE PLAN
16	16.00 CONCEPTUAL SITE PLAN
17	17.00 CONCEPTUAL SITE PLAN
18	18.00 CONCEPTUAL SITE PLAN
19	19.00 CONCEPTUAL SITE PLAN
20	20.00 CONCEPTUAL SITE PLAN
21	21.00 CONCEPTUAL SITE PLAN
22	22.00 CONCEPTUAL SITE PLAN
23	23.00 CONCEPTUAL SITE PLAN
24	24.00 CONCEPTUAL SITE PLAN
25	25.00 CONCEPTUAL SITE PLAN
26	26.00 CONCEPTUAL SITE PLAN
27	27.00 CONCEPTUAL SITE PLAN
28	28.00 CONCEPTUAL SITE PLAN
29	29.00 CONCEPTUAL SITE PLAN
30	30.00 CONCEPTUAL SITE PLAN
31	31.00 CONCEPTUAL SITE PLAN
32	32.00 CONCEPTUAL SITE PLAN
33	33.00 CONCEPTUAL SITE PLAN
34	34.00 CONCEPTUAL SITE PLAN
35	35.00 CONCEPTUAL SITE PLAN
36	36.00 CONCEPTUAL SITE PLAN
37	37.00 CONCEPTUAL SITE PLAN
38	38.00 CONCEPTUAL SITE PLAN
39	39.00 CONCEPTUAL SITE PLAN
40	40.00 CONCEPTUAL SITE PLAN
41	41.00 CONCEPTUAL SITE PLAN
42	42.00 CONCEPTUAL SITE PLAN
43	43.00 CONCEPTUAL SITE PLAN
44	44.00 CONCEPTUAL SITE PLAN
45	45.00 CONCEPTUAL SITE PLAN
46	46.00 CONCEPTUAL SITE PLAN
47	47.00 CONCEPTUAL SITE PLAN
48	48.00 CONCEPTUAL SITE PLAN
49	49.00 CONCEPTUAL SITE PLAN
50	50.00 CONCEPTUAL SITE PLAN
51	51.00 CONCEPTUAL SITE PLAN
52	52.00 CONCEPTUAL SITE PLAN
53	53.00 CONCEPTUAL SITE PLAN
54	54.00 CONCEPTUAL SITE PLAN
55	55.00 CONCEPTUAL SITE PLAN
56	56.00 CONCEPTUAL SITE PLAN
57	57.00 CONCEPTUAL SITE PLAN
58	58.00 CONCEPTUAL SITE PLAN
59	59.00 CONCEPTUAL SITE PLAN
60	60.00 CONCEPTUAL SITE PLAN
61	61.00 CONCEPTUAL SITE PLAN
62	62.00 CONCEPTUAL SITE PLAN
63	63.00 CONCEPTUAL SITE PLAN
64	64.00 CONCEPTUAL SITE PLAN
65	65.00 CONCEPTUAL SITE PLAN
66	66.00 CONCEPTUAL SITE PLAN
67	67.00 CONCEPTUAL SITE PLAN
68	68.00 CONCEPTUAL SITE PLAN
69	69.00 CONCEPTUAL SITE PLAN
70	70.00 CONCEPTUAL SITE PLAN
71	71.00 CONCEPTUAL SITE PLAN
72	72.00 CONCEPTUAL SITE PLAN
73	73.00 CONCEPTUAL SITE PLAN
74	74.00 CONCEPTUAL SITE PLAN
75	75.00 CONCEPTUAL SITE PLAN
76	76.00 CONCEPTUAL SITE PLAN
77	77.00 CONCEPTUAL SITE PLAN
78	78.00 CONCEPTUAL SITE PLAN
79	79.00 CONCEPTUAL SITE PLAN
80	80.00 CONCEPTUAL SITE PLAN
81	81.00 CONCEPTUAL SITE PLAN
82	82.00 CONCEPTUAL SITE PLAN
83	83.00 CONCEPTUAL SITE PLAN
84	84.00 CONCEPTUAL SITE PLAN
85	85.00 CONCEPTUAL SITE PLAN
86	86.00 CONCEPTUAL SITE PLAN
87	87.00 CONCEPTUAL SITE PLAN
88	88.00 CONCEPTUAL SITE PLAN
89	89.00 CONCEPTUAL SITE PLAN
90	90.00 CONCEPTUAL SITE PLAN
91	91.00 CONCEPTUAL SITE PLAN
92	92.00 CONCEPTUAL SITE PLAN
93	93.00 CONCEPTUAL SITE PLAN
94	94.00 CONCEPTUAL SITE PLAN
95	95.00 CONCEPTUAL SITE PLAN
96	96.00 CONCEPTUAL SITE PLAN
97	97.00 CONCEPTUAL SITE PLAN
98	98.00 CONCEPTUAL SITE PLAN
99	99.00 CONCEPTUAL SITE PLAN
100	100.00 CONCEPTUAL SITE PLAN

SCHOOL AGE CHILDREN

- 1. 1.00 SITE PLAN
- 2. 2.00 CONCEPTUAL SITE PLAN
- 3. 3.00 CONCEPTUAL SITE PLAN
- 4. 4.00 CONCEPTUAL SITE PLAN
- 5. 5.00 CONCEPTUAL SITE PLAN
- 6. 6.00 CONCEPTUAL SITE PLAN
- 7. 7.00 CONCEPTUAL SITE PLAN
- 8. 8.00 CONCEPTUAL SITE PLAN
- 9. 9.00 CONCEPTUAL SITE PLAN
- 10. 10.00 CONCEPTUAL SITE PLAN
- 11. 11.00 CONCEPTUAL SITE PLAN
- 12. 12.00 CONCEPTUAL SITE PLAN
- 13. 13.00 CONCEPTUAL SITE PLAN
- 14. 14.00 CONCEPTUAL SITE PLAN
- 15. 15.00 CONCEPTUAL SITE PLAN
- 16. 16.00 CONCEPTUAL SITE PLAN
- 17. 17.00 CONCEPTUAL SITE PLAN
- 18. 18.00 CONCEPTUAL SITE PLAN
- 19. 19.00 CONCEPTUAL SITE PLAN
- 20. 20.00 CONCEPTUAL SITE PLAN
- 21. 21.00 CONCEPTUAL SITE PLAN
- 22. 22.00 CONCEPTUAL SITE PLAN
- 23. 23.00 CONCEPTUAL SITE PLAN
- 24. 24.00 CONCEPTUAL SITE PLAN
- 25. 25.00 CONCEPTUAL SITE PLAN
- 26. 26.00 CONCEPTUAL SITE PLAN
- 27. 27.00 CONCEPTUAL SITE PLAN
- 28. 28.00 CONCEPTUAL SITE PLAN
- 29. 29.00 CONCEPTUAL SITE PLAN
- 30. 30.00 CONCEPTUAL SITE PLAN
- 31. 31.00 CONCEPTUAL SITE PLAN
- 32. 32.00 CONCEPTUAL SITE PLAN
- 33. 33.00 CONCEPTUAL SITE PLAN
- 34. 34.00 CONCEPTUAL SITE PLAN
- 35. 35.00 CONCEPTUAL SITE PLAN
- 36. 36.00 CONCEPTUAL SITE PLAN
- 37. 37.00 CONCEPTUAL SITE PLAN
- 38. 38.00 CONCEPTUAL SITE PLAN
- 39. 39.00 CONCEPTUAL SITE PLAN
- 40. 40.00 CONCEPTUAL SITE PLAN
- 41. 41.00 CONCEPTUAL SITE PLAN
- 42. 42.00 CONCEPTUAL SITE PLAN
- 43. 43.00 CONCEPTUAL SITE PLAN
- 44. 44.00 CONCEPTUAL SITE PLAN
- 45. 45.00 CONCEPTUAL SITE PLAN
- 46. 46.00 CONCEPTUAL SITE PLAN
- 47. 47.00 CONCEPTUAL SITE PLAN
- 48. 48.00 CONCEPTUAL SITE PLAN
- 49. 49.00 CONCEPTUAL SITE PLAN
- 50. 50.00 CONCEPTUAL SITE PLAN
- 51. 51.00 CONCEPTUAL SITE PLAN
- 52. 52.00 CONCEPTUAL SITE PLAN
- 53. 53.00 CONCEPTUAL SITE PLAN
- 54. 54.00 CONCEPTUAL SITE PLAN
- 55. 55.00 CONCEPTUAL SITE PLAN
- 56. 56.00 CONCEPTUAL SITE PLAN
- 57. 57.00 CONCEPTUAL SITE PLAN
- 58. 58.00 CONCEPTUAL SITE PLAN
- 59. 59.00 CONCEPTUAL SITE PLAN
- 60. 60.00 CONCEPTUAL SITE PLAN
- 61. 61.00 CONCEPTUAL SITE PLAN
- 62. 62.00 CONCEPTUAL SITE PLAN
- 63. 63.00 CONCEPTUAL SITE PLAN
- 64. 64.00 CONCEPTUAL SITE PLAN
- 65. 65.00 CONCEPTUAL SITE PLAN
- 66. 66.00 CONCEPTUAL SITE PLAN
- 67. 67.00 CONCEPTUAL SITE PLAN
- 68. 68.00 CONCEPTUAL SITE PLAN
- 69. 69.00 CONCEPTUAL SITE PLAN
- 70. 70.00 CONCEPTUAL SITE PLAN
- 71. 71.00 CONCEPTUAL SITE PLAN
- 72. 72.00 CONCEPTUAL SITE PLAN
- 73. 73.00 CONCEPTUAL SITE PLAN
- 74. 74.00 CONCEPTUAL SITE PLAN
- 75. 75.00 CONCEPTUAL SITE PLAN
- 76. 76.00 CONCEPTUAL SITE PLAN
- 77. 77.00 CONCEPTUAL SITE PLAN
- 78. 78.00 CONCEPTUAL SITE PLAN
- 79. 79.00 CONCEPTUAL SITE PLAN
- 80. 80.00 CONCEPTUAL SITE PLAN
- 81. 81.00 CONCEPTUAL SITE PLAN
- 82. 82.00 CONCEPTUAL SITE PLAN
- 83. 83.00 CONCEPTUAL SITE PLAN
- 84. 84.00 CONCEPTUAL SITE PLAN
- 85. 85.00 CONCEPTUAL SITE PLAN
- 86. 86.00 CONCEPTUAL SITE PLAN
- 87. 87.00 CONCEPTUAL SITE PLAN
- 88. 88.00 CONCEPTUAL SITE PLAN
- 89. 89.00 CONCEPTUAL SITE PLAN
- 90. 90.00 CONCEPTUAL SITE PLAN
- 91. 91.00 CONCEPTUAL SITE PLAN
- 92. 92.00 CONCEPTUAL SITE PLAN
- 93. 93.00 CONCEPTUAL SITE PLAN
- 94. 94.00 CONCEPTUAL SITE PLAN
- 95. 95.00 CONCEPTUAL SITE PLAN
- 96. 96.00 CONCEPTUAL SITE PLAN
- 97. 97.00 CONCEPTUAL SITE PLAN
- 98. 98.00 CONCEPTUAL SITE PLAN
- 99. 99.00 CONCEPTUAL SITE PLAN
- 100. 100.00 CONCEPTUAL SITE PLAN

LEGAL DESCRIPTION

LEGAL DESCRIPTION: PARCEL 21-21-30-000-00-048
 LOTS 10 SECTION 21, TOWNSHIP 20, RANGE 20, ORANGE COUNTY, FLORIDA

PROPERTY INTEREST

PROPERTY INTEREST: PROPERTY OWNERS: CONNOLLY & WICKER INC.
 4115 WINDYBROOK DR
 ORANGE, FL 32837
 CONTACT: KATHLEEN KOSTERMAN
 CONNOLLY & WICKER INC.
 3000 SHAWNEE LANE, ORANGE, FL 32808
 CONTACT: STEVE BLOD P.E.
 PHONE: (407) 281-3100

PROJECT SUPERVISOR

PROJECT SUPERVISOR: KENNETH S. BROWN, P.E.
 10000 UNIVERSITY BLVD, SUITE 100
 ORANGE, FL 32837
 CONTACT: PHOENIX S. MOONSHI
 MOONSHI & ASSOCIATES, INC.
 10000 UNIVERSITY BLVD, SUITE 100
 ORANGE, FL 32837
 CONTACT: PHOENIX S. MOONSHI
 MOONSHI & ASSOCIATES, INC.
 10000 UNIVERSITY BLVD, SUITE 100
 ORANGE, FL 32837

PLANNING NOTE

PLANNING NOTE: THIS SITE PLAN IS A PRELIMINARY DESIGN AND IS NOT TO BE USED FOR ANY OTHER PURPOSE AND IS TO BE REVISIONED AT FINAL DESIGN.



<p>OLD CHENEY 10 ORANGE COUNTY, FL PREPARED FOR Fekany Bros. Enterprises, Inc.</p>	<p>MASTER SITE PLAN</p>	<p>Connelly & Wicker Inc. Planning • Engineering • Landscape Architecture 1540 NORTH ORANGE AVE., SUITE 210 WINTER PARK, FLORIDA 32789 (407) 281-3100 FAX: (407) 201-3059 www.cwinc.com FLORIDA REGISTRY: 3695 L.A. NUMBER: LC19000311</p>
--	--------------------------------	---

THIS DRAWING IS THE PROPERTY OF CONNOLLY & WICKER INC. AND IS NOT TO BE REPRODUCED OR COPIED IN WHOLE OR IN PART. IT IS NOT TO BE USED ON ANY OTHER PROJECT AND IS TO BE REVISIONED ON REQUEST.