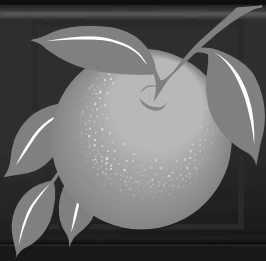




Board of County Commissioners

Public Hearings

October 18, 2016



Waterleigh Planned Development / Land Use Plan (PD / LUP)

Case:	CDR-16-04-130
Project Name:	Waterleigh PD/LUP
Applicant:	Adam Smith, VHB, Inc.
District:	1
Acreage:	1,485.40 gross acres (<i>overall PD</i>)
Location:	Generally located south of Old YMCA Road, west of Avalon Road (CR 545), and east of the Orange / Lake County Line
Request:	To request approval of a Master Sign Plan (MSP), along with four (4) signage-related waivers from Orange County Code Section 31.5 for increased accessory structure height, increased ground sign height, increased copy area, and increased subdivision sign height

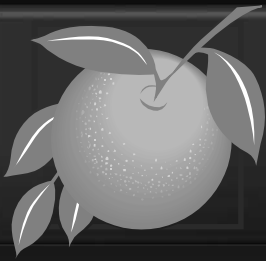


Waterleigh

Planned Development / Land Use Plan (PD / LUP)

Future Land Use Map





Waterleigh Planned Development / Land Use Plan (PD / LUP) Zoning Map





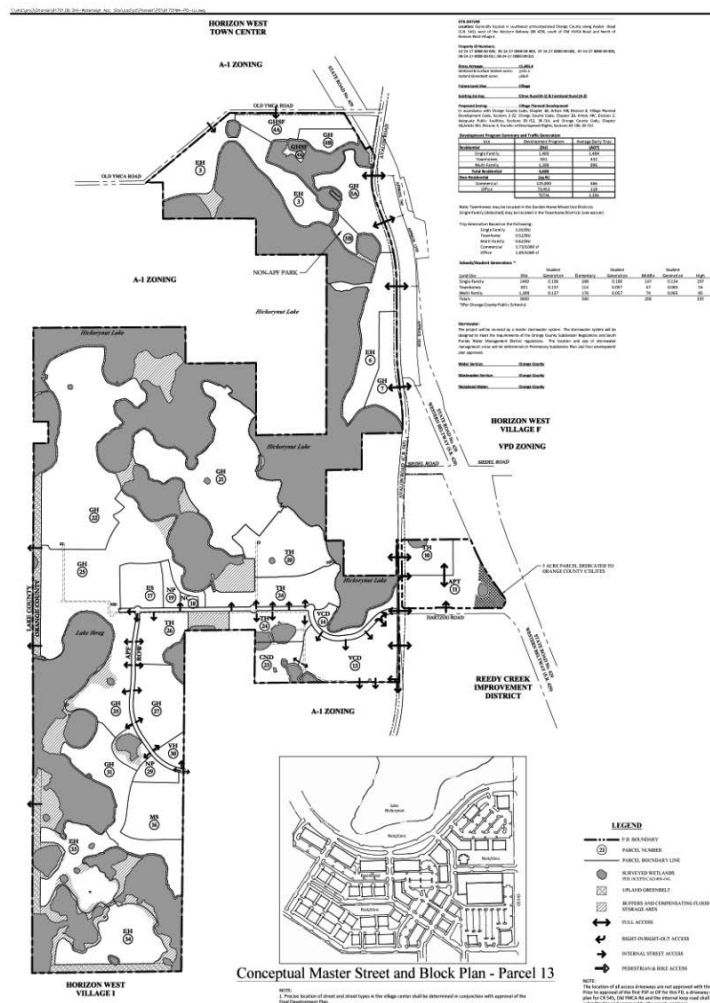
Waterleigh

Planned Development / Land Use Plan (PD / LUP)

Aerial Map

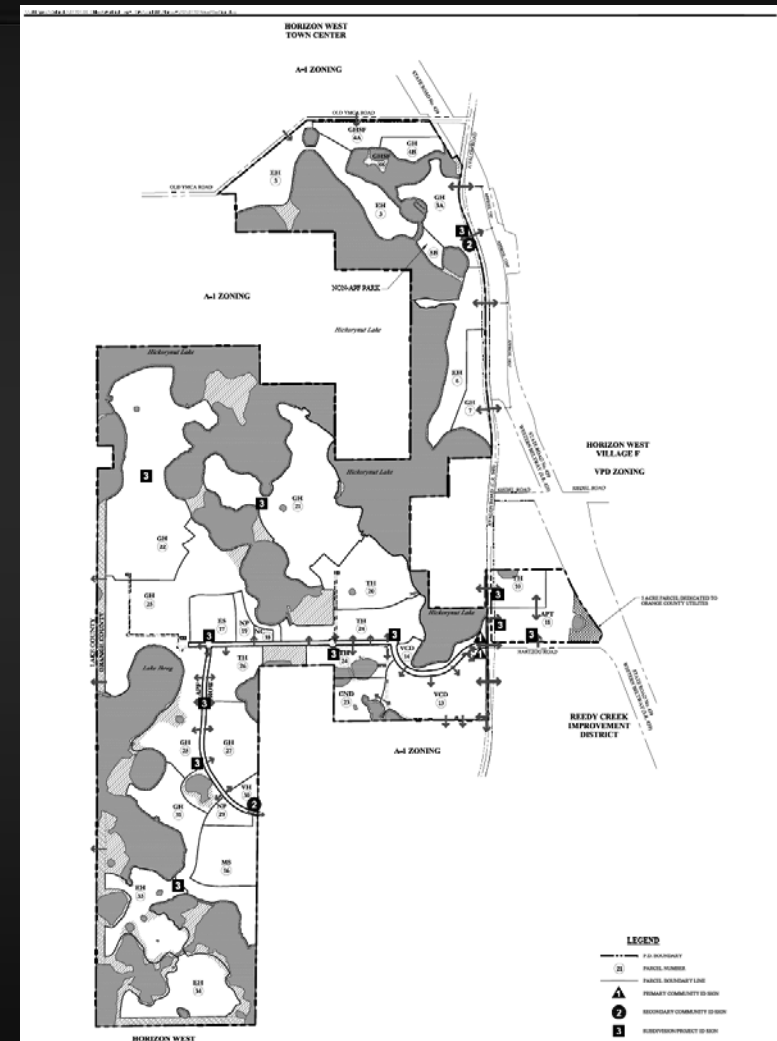


Waterleigh Planned Development / Land Use Plan (PD / LUP)



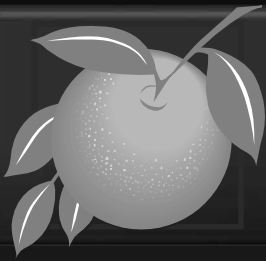
Land Use Plan
Waterleigh Planned Development/Land Use Plan
Hickorynut Village (Village H) of Horizon West
Orange County, Florida

SCALE IN FEET
DATE: 7.7.2014
SHEET 6
VHB

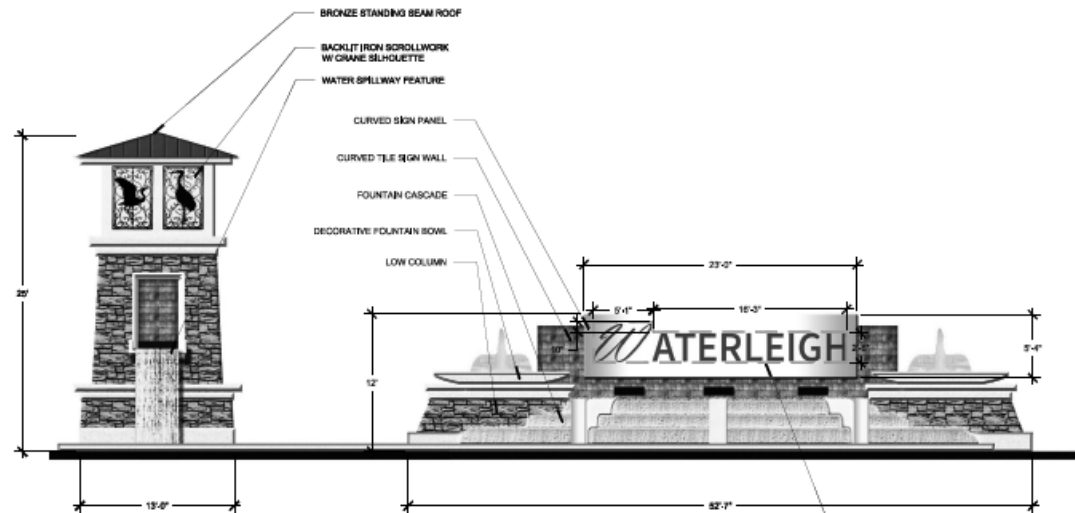


Master Sign Plan
Waterleigh Planned Development/Land Use Plan
Hickorynut Village (Village H) of Horizon West
Orange County, Florida

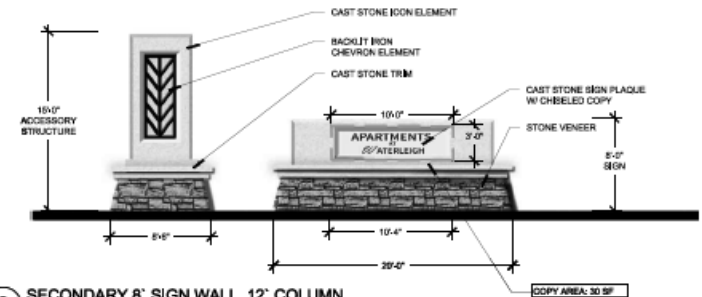
SCALE IN FEET
DATE: 7.7.2014
SHEET 12
VHB



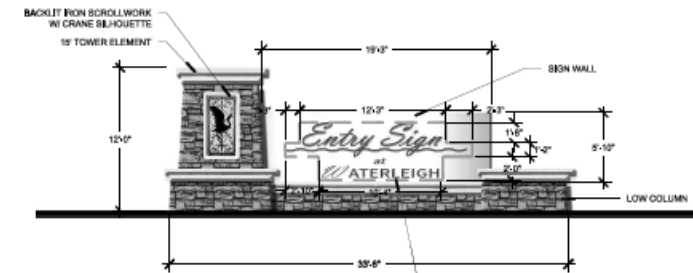
Waterleigh Planned Development / Land Use Plan (PD / LUP)



1 PRIMARY 12' SIGN WALL, 25' TOWER (PD)
3/16" = 1'-0"



3 SECONDARY 8' SIGN WALL, 12' COLUMN
3/16" = 1'-0"



2 PRIMARY 8' SIGN WALL, 12' COLUMN (NEIGHBORHOOD)
3/16" = 1'-0"



Action Requested

Make a finding of consistency with the Comprehensive Plan (CP) and approve the substantial change to the Waterleigh Planned Development / Land Use Plan (PD/LUP) dated “Received August 24, 2016”, subject to the conditions listed under the DRC Recommendation in the Staff Report.

District 1