



Interoffice Memorandum

November 2, 2017

TO: Mayor Teresa Jacobs
and Board of County Commissioners

FROM: Mark V. Massaro, P.E., Director, Public Works Department

CONTACT PERSON: **Christine N. Lofye, P. E., Acting Manager**
Traffic Engineering Division

PHONE NUMBER: **(407) 836-7890**

SUBJ: **Installation of Traffic Control Device and "No Parking" signs in Royal Vista**

Our staff recommends that the following traffic control devices be installed in **Royal Vista**

Install "STOP" signs on:
Royal Vista Court at Union Park Drive

The Fire Marshal recommends that the following "No Parking" signs be installed in **Royal Vista**

Install "NO PARKING" signs on:
Royal Vista Court

Action Requested: Approval of Traffic Control Device and "No Parking" sign installations in Royal Vista. District 5.

MVM/CNL/AHW

Attachments

ROYAL VISTA
A PORTION OF SECTION 17, TOWNSHIP 22 SOUTH, RANGE 31 EAST
ORANGE COUNTY, FLORIDA
DISTRICT # 5

STOP/STREET

(1)	(Ft S)	on Royal Vista Court at Union Park Drive	2100 10200
------------	---------------	---	-----------------------

SPEED LIMIT 25 MPH

(2)	(Ft S)	on Royal Vista Court at Union Park Drive
------------	---------------	---

END OF ROAD TREATMENT

(3)	(Ft S)	on Royal Vista Court at Union Park Drive
------------	---------------	---

NO PARKING with arrows

(4)	on Royal Vista Court from Union Park Drive extending south approximately 200ft on the east side
------------	--

ahw/

11/2/2017

ROYAL VISTA

A PORTION OF SECTION 17, TOWNSHIP 22 SOUTH, RANGE 31 EAST
ORANGE COUNTY, FLORIDA

SHEET 1 OF 2

PLAT BOOK **88** PAGE **1**

ROYAL VISTA DEDICATION

THAT ALL MEN BY THESE PRESENTS, that the undersigned, being the owner of the above of the lands described in the annexed map in this plat, do hereby dedicate said lands and plat for the local and permanent benefit, improvement and advantage of the citizens, public drainage easements and the City Government shown herein to the permanent use of the public.

IN WITNESS WHEREOF, the owner has caused these presents to be signed by David A. Fitzgerald and the same to be attested by David A. Fitzgerald Secretary named below on this 17th day of February, 2016.

Signed and sealed in the presence of:
David A. Fitzgerald (Signature)
David A. Fitzgerald (Print Name)
 State of Florida
 County of Orange
David A. Fitzgerald (Signature)
David A. Fitzgerald (Print Name)
 State of Florida
 County of Orange

THIS IS TO CERTIFY that on 02/17/2016 before me, an official duly authorized to take acknowledgments in the State and County aforesaid, David A. Fitzgerald of the County of Orange, Florida, Manager of Union Park Holdings, LLC, presented to me a certain instrument, to-wit: a certain instrument of dedication, and acknowledged that she is the person described in and who executed the foregoing dedication, and acknowledged the execution thereof to be her free act and deed for the uses and purposes therein expressed, and she did not lack in such.

IN WITNESS WHEREOF, I have hereunto set my hand and seal on the above date.
Kamatha King (Signature)
 Signature of Notary Public
 Notary Public
 State of Florida
 Commission Expires July 10, 2018
 © FPH1942

CERTIFICATE OF SURVEYOR
 This plat was prepared under my direction and supervision. This plat conforms with all of the survey requirements of Chapter 177, Florida Statutes.
 Date: 2-17-2016 Signed: David M. McDermott
 Registration No. 12 64779
 Associated Land Surveyors
 8, Higgens, Rd.
 101 Higgens Springs, FL 32714
 (407) 927-1111

CERTIFICATE OF APPROVAL BY ZONING ENGINEER
 Examined and Approved: Carolyn Jones 2-1-16
 Zoning Ordinance

CERTIFICATE OF REVIEW BY COUNTY SURVEYOR
 This plat has been reviewed for conformity with Chapter 177, Florida Statutes.
William R. Marshall Jr 2-17-16
 County Surveyor

CERTIFICATE OF APPROVAL BY COUNTY ENGINEER
 Examined and Approved: David C. Hill 2-17-16
 County Engineer

CERTIFICATE OF APPROVAL BY THE BOARD OF COUNTY COMMISSIONERS
 THIS IS TO CERTIFY that on 2-11-16 the foregoing plat was approved by the Board of County Commissioners of Orange County, Florida.
David A. Fitzgerald (Signature)
 Attest: Matthew D. Hagan (Signature)
 Clerk of the Board of County Commissioners
 By: Robert Hill (Signature)

CERTIFICATE OF COUNTY COMPTROLLER
 I HEREBY CERTIFY that the foregoing plat was recorded in the Orange County Official Records, and was filed for record on:
2/2/2016 at the 2016-005 8714
 County Comptroller
 in and for Orange County, Florida
David A. Fitzgerald (Signature) SEAL D.C.

LEGAL DESCRIPTION:

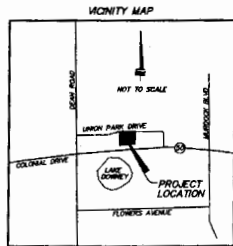
A PORTION OF SECTION 17, TOWNSHIP 22 SOUTH, RANGE 31 EAST, ORANGE COUNTY, FLORIDA, BEING MORE PARTICULARLY DESCRIBED AS FOLLOWS:
 COMMENCE AT THE NORTHWEST CORNER OF THE SOUTHWEST 1/4 OF SECTION 17, TOWNSHIP 22 SOUTH, RANGE 31 EAST, ORANGE COUNTY, FLORIDA; THENCE RUN S 07°15'31" E 180.00 FEET; THENCE RUN N 89°00'00" E 150.00 FEET; THENCE RUN S 89°00'00" E A DISTANCE OF 30.00 FEET TO A POINT ON THE SOUTH BOUNDARY OF SAID LINE OF UNION PARK DRIVE; SAID POINT ALSO BEING THE POINT OF BEGINNING; THENCE RUN N 89°00'00" E ALONG SAID SOUTH BOUNDARY A DISTANCE OF 180.00 FEET; THENCE DEPARTING WESTWARDLY SOUTH 89°00'00" E A DISTANCE OF 180.00 FEET; THENCE DEPARTING WESTWARDLY SOUTH 89°00'00" E A DISTANCE OF 180.00 FEET TO A POINT ON THE WEST LINE OF ORANGE ACRES-BURNED SECTION; ACCORDING TO THE PLAT HERETO, RECORDED IN PLAT BOOK 7, PAGE 72, PUBLIC RECORDS OF ORANGE COUNTY, FLORIDA; THENCE ALONG SAID WEST LINE RUN S 07°15'31" E A DISTANCE OF 180.00 FEET TO THE NORTHWEST CORNER OF LOT 13 OF SAID ORANGE ACRES-BURNED SECTION; THENCE RUN S 07°15'31" E ALONG THE WEST LINE OF SAID LOT A DISTANCE OF 3.00 FEET; THENCE DEPARTING WESTWARDLY SOUTH 89°00'00" E A DISTANCE OF 151.34 FEET; THENCE RUN N 89°00'00" E A DISTANCE OF 180.00 FEET TO THE POINT OF BEGINNING, CONTAINING 3.00 ACRES MORE OR LESS.

SURVEYOR'S NOTES:

- BEARINGS SHOWN HEREON ARE BASED ON THE WEST LINE OF THE SW 1/4 OF SECTION 17-22-31-16, HAVING AN ASSIGNED BEARING OF 3°02'00" W.
- IRREGULAR ACCESS LOCATIONS FROM LOTS 1 AND 10 TO UNION PARK DRIVE ARE CONTROLLED BY ORANGE COUNTY, FLORIDA AND PERMITTED THROUGH THE ORANGE COUNTY PERMITTING PROCESS.
- ALL RELATED UTILITY EASEMENTS SHALL PROVIDE THAT SUCH EASEMENTS SHALL ALSO BE EASEMENTS FOR THE CONSTRUCTION, INSTALLATION, MAINTENANCE, AND OPERATION OF CABLE TELEVISION SERVICES PROVIDED HEREON, BY SUCH CONSTRUCTORS, INSTALLATION AND OPERATION OF CABLE TELEVISION SERVICES IN ACCORDANCE WITH THE STATUTES AND ORDINANCES OF ORANGE COUNTY, FLORIDA, AND ALL RELATED UTILITY EASEMENTS SHALL ALSO BE EASEMENTS FOR THE CONSTRUCTION, INSTALLATION, MAINTENANCE, AND OPERATION OF CABLE TELEVISION SERVICES PROVIDED HEREON, BY SUCH CONSTRUCTORS, INSTALLATION AND OPERATION OF CABLE TELEVISION SERVICES IN ACCORDANCE WITH THE STATUTES AND ORDINANCES OF ORANGE COUNTY, FLORIDA. COMPANY DAMAGES THE FACILITIES OF A PUBLIC UTILITY, IT SHALL BE SOLELY RESPONSIBLE FOR THE DAMAGES THAT SUCH UTILITY SHALL NOT APPLY TO THESE UTILITY EASEMENTS GRANTED TO OR OBTAINED BY A PARTICULAR ELECTRIC, TELEPHONE, GAS, OR OTHER PUBLIC UTILITY. SUCH CONSTRUCTION, INSTALLATION, MAINTENANCE, AND OPERATION SHALL WITH THE NATIONAL ELECTRICAL SAFETY CODE AS ADOPTED BY THE FLORIDA PUBLIC SERVICES COMMISSION.
- TRACT "A" RETENTION AREA IS TO BE OWNED AND MAINTAINED BY THE ROYAL VISTA TOWNHOMES ASSOCIATION, INC. A PUBLIC DRAINAGE EASEMENT OVER TRACT "A" IS DEDICATED TO ORANGE COUNTY, FLORIDA.
- THE 10.0' BOLLARD AND LANDSCAPE EASEMENT AND THE 10.0' FENCE, WALL AND LANDSCAPE EASEMENT SHOWN HEREON IS DEDICATED TO AND MAINTAINED BY THE ROYAL VISTA TOWNHOMES ASSOCIATION, INC.
- THE 10.0' PRIVATE DRAINAGE EASEMENT SHOWN HEREON IS DEDICATED TO AND MAINTAINED BY THE ROYAL VISTA TOWNHOMES ASSOCIATION, INC.
- THE PRIVATE FIRE LINE EASEMENTS SHOWN HEREON ARE DEDICATED TO AND MAINTAINED BY THE ROYAL VISTA TOWNHOMES ASSOCIATION, INC. FOR THE PURPOSES OF A PRIVATE FIRE WATER LINE.
- THE LINES DESCRIBED HEREON ARE SUBJECT TO A TRACT OF NON-EXCLUSIVE EASEMENT RECORDED IN OFFICIAL RECORDS BOOK 7088 PAGE 7201, PUBLIC RECORDS OF ORANGE COUNTY, FLORIDA.
- COMMON AREAS AS DEFINED IN THE DECLARATION OF RESTRICTIVE COVENANTS, EASEMENTS AND PARTY WALL AGREEMENT RECORDED IN THE PUBLIC RECORDS OF ORANGE COUNTY, FLORIDA ARE AS FOLLOWS:
 PRIVATE DRAINAGE EASEMENTS
 WALL EASEMENTS
 LANDSCAPE EASEMENTS
 TRACT "A" RETENTION POND
 FENCE EASEMENTS

LEGEND

- INDICATES SET 4"x4" CONCRETE MONUMENT STAMPED "TM 18 18787" (UNLESS NOTED OTHERWISE)
- INDICATES SET 1 1/4" DIAMETER BRASS DISK STAMPED "18787" (UNLESS NOTED OTHERWISE)
- PCP PERMANENT CONTROL POINT (SET NAIL & 1 1/4" BRASS DISK STAMPED "TM 18787")
- PLD PLUM
- PLD PLUM
- CCR CENTERED CORNER RECORD
- O/S OFFICIAL SURVEYOR RECORD
- CM CONCRETE MONUMENT
- PRM PERMANENT REFERENCE MONUMENT
- F FENCE
- T TOWER
- R RAILROAD
- IE INTERSECTION
- U/E UTILITY EASEMENT
- L/E LANDSCAPE EASEMENT
- D/E DRAINAGE EASEMENT
- N/O-NORTH-OF-NORTH
- C CENTERLINE
- RLS REGISTERED LAND SURVEYOR
- LA CENTRAL ANGLE
- R RADIUS
- LN LENGTH
- CB CURVED BEARING
- CP CURVED POINT
- PI POINT OF INTERSECTION
- RP RADIUS POINT
- NR NON-RADIAL
- FL/E FIRE LINE EASEMENT



SHEET INDEX

SHEET 1 - LEGAL DESCRIPTION, LEGEND, NOTES & DEDICATION
 SHEET 2 - PLAT GEOMETRY

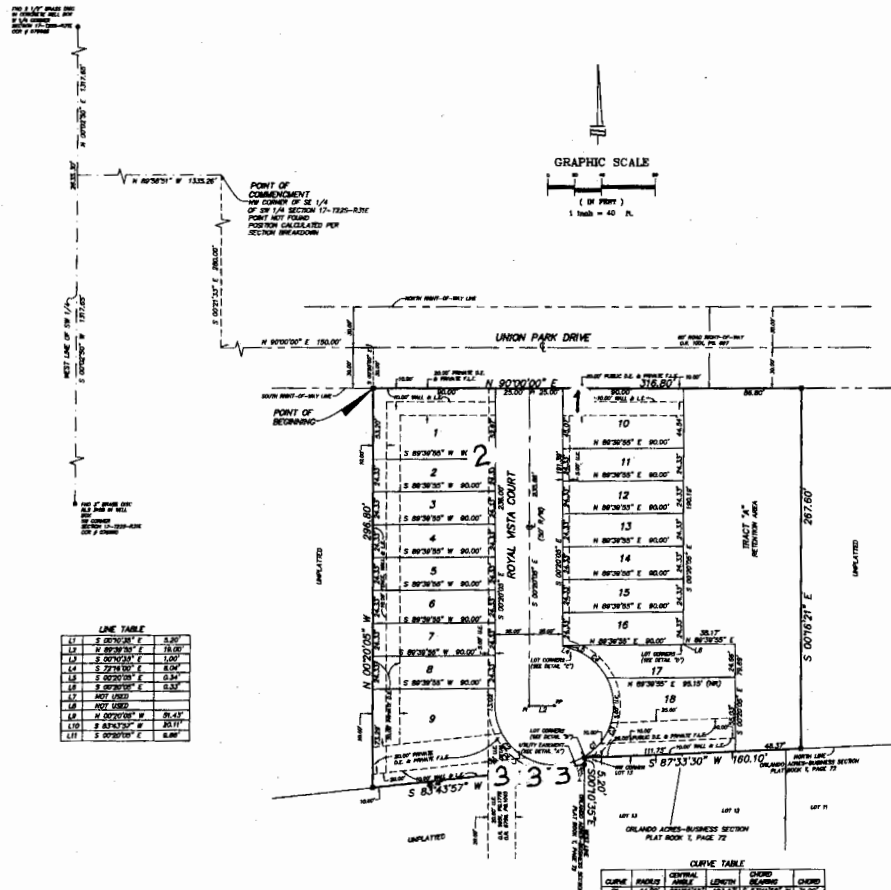
NOTICE: THIS PLAT, AS RECORDED IN ITS GRAPHIC FORM, IS THE OFFICIAL DEPICTION OF THE SUBDIVIDED LANDS DESCRIBED HEREON AND WILL IN NO CIRCUMSTANCES BE SUPERLATED IN AUTHORITY BY ANY OTHER GRAPHIC OR DIGITAL FORM OF THE PLAT. THERE MAY BE ADDITIONAL RESTRICTIONS THAT ARE NOT RECORDED ON THIS PLAT THAT MAY BE FOUND IN THE PUBLIC RECORDS OF THIS COUNTY.

PREPARED BY: **Associated Land Surveying & Mapping, Inc.**
 PROFESSIONAL LAND SURVEYORS
 101 WYMORE ROAD, SUITE 111 ALTAMONTE SPRINGS, FLORIDA 32714
 TELEPHONE: (407) 888-5002
 CERTIFICATE OF AUTHORIZATION NUMBER: 18187

THE PROPERTY SHOWN HEREON REPRESENTS THE LANDS INCLUDED IN THE UNION PARK TOWNHOMES PRELIMINARY SUBDIVISION PLAN AS APPROVED BY THE ORANGE COUNTY BOARD OF COUNTY COMMISSIONERS ON MAY 6, 2006.

ROYAL VISTA

A PORTION OF SECTION 17, TOWNSHIP 22 SOUTH, RANGE 31 EAST
ORANGE COUNTY, FLORIDA



LINE TABLE

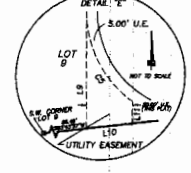
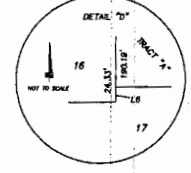
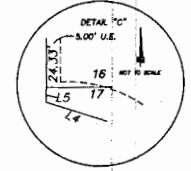
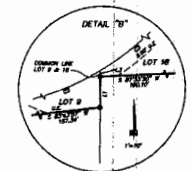
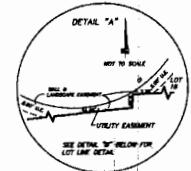
L1	S 89°30'21" E	3.00
L2	S 89°30'21" E	13.00
L3	S 89°30'21" E	1.00
L4	S 72°38'00" E	8.04
L5	S 89°30'21" E	3.34
L6	S 89°30'21" E	3.34
L7	NOT DED.	
L8	NOT DED.	
L9	N 89°30'21" W	34.47
L10	S 89°30'21" W	20.71
L11	S 89°30'21" E	6.88

CURVE TABLE

CURVE	CHORD	CHORD BEARING	LENGTH	CHORD BEARING	CHORD
1	41.70	S 89°30'21" E	13.17	S 89°30'21" E	13.17
2	21.00	S 89°30'21" E	6.37	S 89°30'21" E	6.37
3	21.00	S 89°30'21" E	6.37	S 89°30'21" E	6.37
4	41.70	S 89°30'21" E	13.17	S 89°30'21" E	13.17
5	41.70	S 89°30'21" E	13.17	S 89°30'21" E	13.17

NOTICE: THIS PLAT, AS RECORDED IN ITS GRAPHIC FORM, IS THE OFFICIAL DEPICTION OF THE SUBDIVIDED LANDS DESCRIBED HEREIN AND WILL IN NO CIRCUMSTANCES BE SUPERSEDED IN AUTHORITY BY ANY OTHER GRAPHIC OR DIGITAL FORM OF THE PLAT. THERE MAY BE ADDITIONAL RESTRICTIONS THAT ARE NOT RECORDED ON THIS PLAT THAT MAY BE FOUND IN THE PUBLIC RECORDS OF THIS COUNTY.

PREPARED BY: **Associated Land Surveying & Mapping, Inc.**
PROFESSIONAL LAND SURVEYORS
101 WYNORE ROAD, SUITE 111, ALTA MONTE SPRINGS, FLORIDA 32714
TELEPHONE (407) 888-5002
CERTIFICATE OF AUTHORIZATION NUMBER: 18 6787



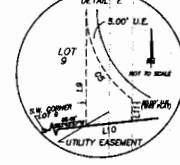
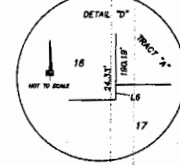
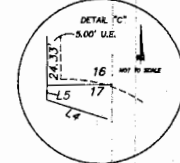
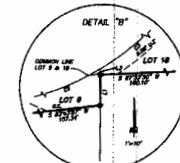
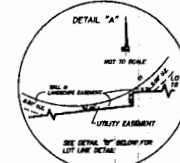
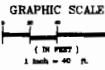
NO PARKING

ROYAL VISTA

A PORTION OF SECTION 17, TOWNSHIP 22 SOUTH, RANGE 31 EAST
ORANGE COUNTY, FLORIDA

SEE DETAIL "A" FOR
UTILITY EASEMENT
AND LOT LINE DETAIL

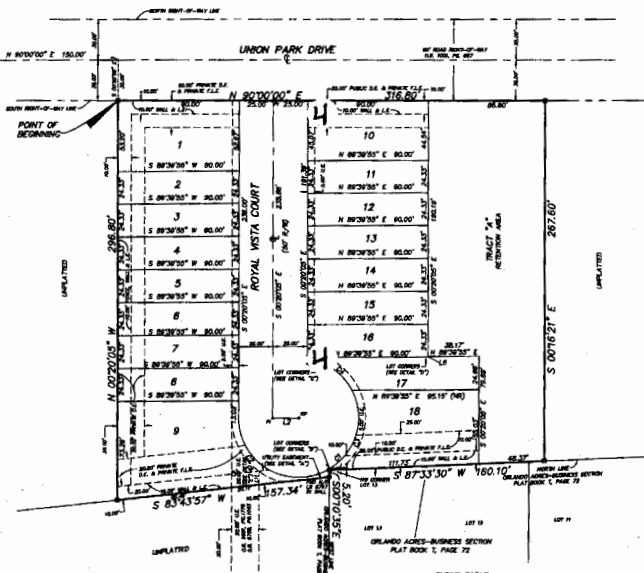
POINT OF COMMENCEMENT
THE CORNER OF SE 1/4
OF SW 1/4 SECTION 17-7225-R3E
POINT NOT FOUND
POSITION CALCULATED PER
SECTION INFORMATION



NO PARKING

NO PARKING

LINE	BEARING	LENGTH
L1	S 89°29'51" E	5.50'
L2	S 89°29'51" E	78.00'
L3	S 89°29'51" E	1.00'
L4	S 72°28'10" E	8.00'
L5	S 89°29'51" E	0.34'
L6	S 89°29'51" E	0.34'
L7	NOT USED	
L8	NOT USED	
L9	S 89°29'51" W	31.47'
L10	S 87°43'57" W	20.17'
L11	S 89°29'51" E	0.89'



CHANG	NUMBER	CENTRAL ANGLE	LENGTH	CHANG BEARING	CHANG
CH	1	173°22'30"	173.24'	S 72°28'10" E	8.00'
CH	2	107°00'00"	28.20'	S 89°29'51" E	28.20'
CH	3	107°00'00"	34.70'	S 89°29'51" E	34.70'
CH	4	107°00'00"	16.24'	S 89°29'51" E	16.24'

NOTICE: THIS PLAT, AS RECORDED IN ITS GRAPHIC FORM, IS THE OFFICIAL DEPICTION OF THE SURROUNDED LANDS DESCRIBED HEREIN AND WILL IN NO CIRCUMSTANCES BE SUPPLANTED IN AUTHORITY BY ANY OTHER GRAPHIC OR DIGITAL FORM OF THE PLAT. THERE MAY BE ADDITIONAL RESTRICTIONS THAT ARE NOT RECORDED ON THIS PLAT THAT MAY BE FOUND IN THE PUBLIC RECORDS OF THIS COUNTY.

PREPARED BY: **Associated Land Surveying & Mapping, Inc.**
PROFESSIONAL LAND SURVEYORS
101 WYMORE ROAD, SUITE 111, ALTA MONTE SPRINGS, FLORIDA 32714
TELEPHONE (407) 866-5002
CERTIFICATE OF AUTHORIZATION NUMBER: LB 6767

NO PARKING