



Interoffice Memorandum

February 28, 2020

TO: Mayor Jerry L. Demings
and Board of County Commissioners

FROM: Joseph C. Kunkel, P.E., Director, Public Works Department

CONTACT PERSON: **Humberto L. Castellero, P. E., PTOE, Interim Manager,**
Traffic Engineering Division

PHONE NUMBER: (407) 836-7891

SUBJ: **Installation of Traffic Control Devices and "No Parking" signs in
Highlands at Summerlake Groves Phase 3C**

Our staff recommends installing the following traffic control devices in Highlands at Summerlake Groves Phase 3C:

Install "STOP" signs on:

Water Blossom Lane at Murcott Blossom Boulevard

Water Blossom Lane at Sunstar Way

The Fire Marshal recommends installing the following "No Parking" signs in Highlands at Summerlake Groves Phase 3C:

Install "NO PARKING" signs on:

Water Blossom Lane

Sunstar Way

**Action Requested: Approval of Traffic Control Devices and "No Parking" signs
installation in Highlands at Summerlake Groves Phase 3C.
District 1.**

JCK/HLC/AHW/nad

Attachments

HIGHLANDS AT SUMMERLAKE GROVES PHASE 3C

**SITUATED IN SECTION 33, TOWNSHIP 23 SOUTH, RANGE 27 EAST,
ORANGE COUNTY, FLORIDA
DISTRICT # 1**

STOP/STREET	INITIALS
(1) (Ft _____ S) on Water Blossom Lane	00 _____
at Murcott Blossom Boulevard	00 _____
(2) (Ft _____ N) on Water Blossom Lane	00 _____
at Sunstar Way	00 _____

SPEED LIMIT 25 MPH

(3) (Ft _____ S) on Water Blossom Lane	_____
at Murcott Blossom Boulevard	_____

END OF ROAD TREATMENT

(4) (Ft _____ E) on Sunstar Way	_____
at Water Blossom Lane	_____

NO PARKING with arrows

on Water Blossom Lane from Murcott Blossom Boulevard extending south to Sunstar Way on the east side and in the curves as indicated on the attached parking plan.

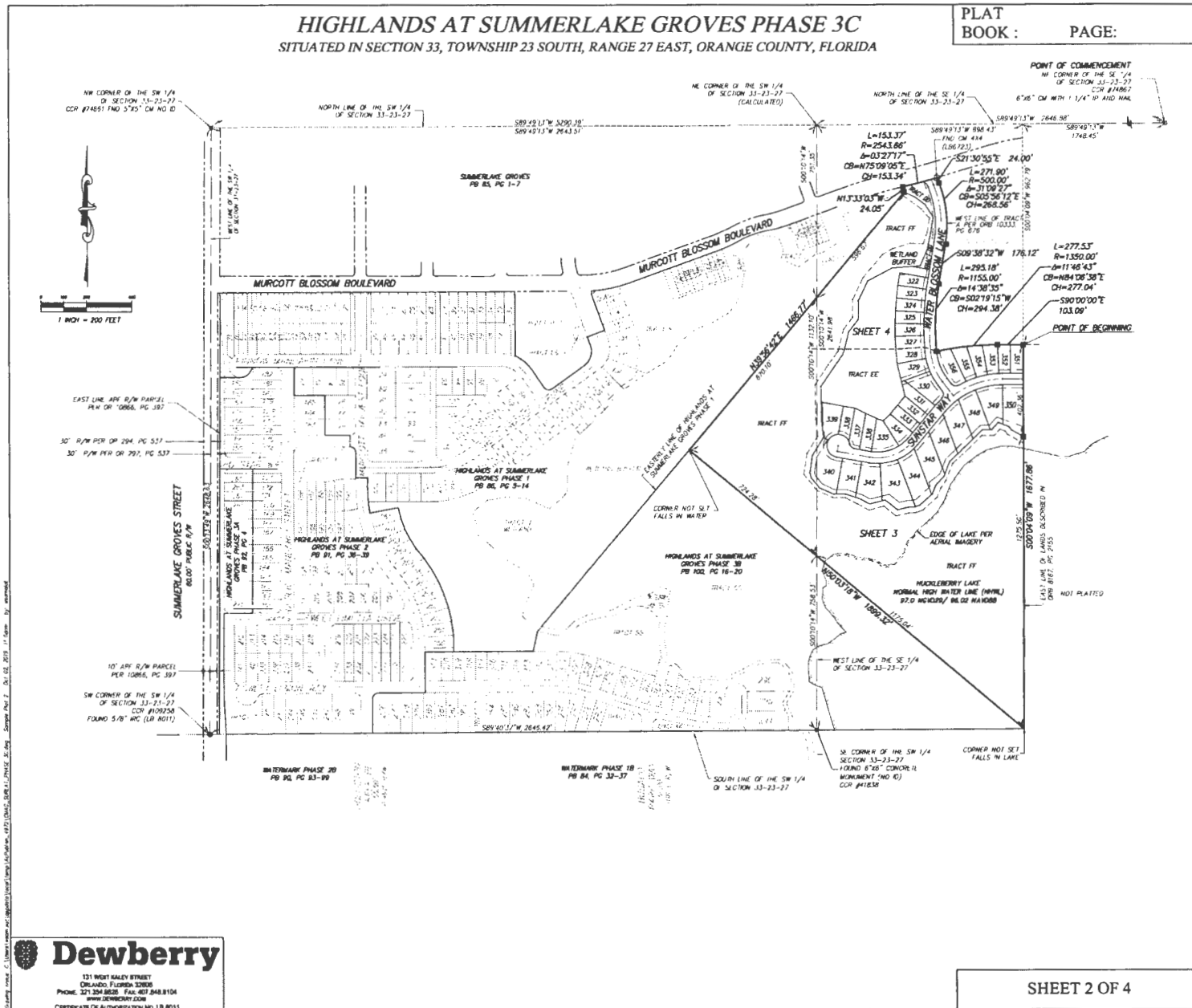
on Sunstar Way from Water Blossom Lane extending east approximately 350 feet on the south side and on Sunstar Way extending west on the south side and into the cul-de-sac and in the curves as indicated on the attached parking plan.

2/14/2020

ahw/

HIGHLANDS AT SUMMERLAKE GROVES PHASE 3C
 SITUATED IN SECTION 33, TOWNSHIP 23 SOUTH, RANGE 27 EAST, ORANGE COUNTY, FLORIDA

PLAT BOOK : PAGE:



C:\Users\jason.c\Documents\Projects\2015\2015-05-15-2015-11-05\2015-11-05.dwg - 2015-11-05 11:05:11 AM - 11/05/2015

Dewberry
 131 WEST SALEY STREET
 ORLANDO, FLORIDA 32838
 PHONE: 321.304.8830 FAX: 407.848.8104
 WWW.DEBERRY.COM
 CERTIFICATE OF AUTHORIZATION NO. LB 8011

SHEET 2 OF 4

HIGHLANDS AT SUMMERLAKE GROVES PHASE 3C
SITUATED IN SECTION 33, TOWNSHIP 23 SOUTH, RANGE 27 EAST, ORANGE COUNTY, FLORIDA

PLAT BOOK : PAGE:

NO CONCRETE INSTALLATIONS

NO CONCRETE INSTALLATIONS

NO CONCRETE INSTALLATIONS



DATE: 08/20/2018 11:00AM BY: J. W. ...

SIGN LEGEND

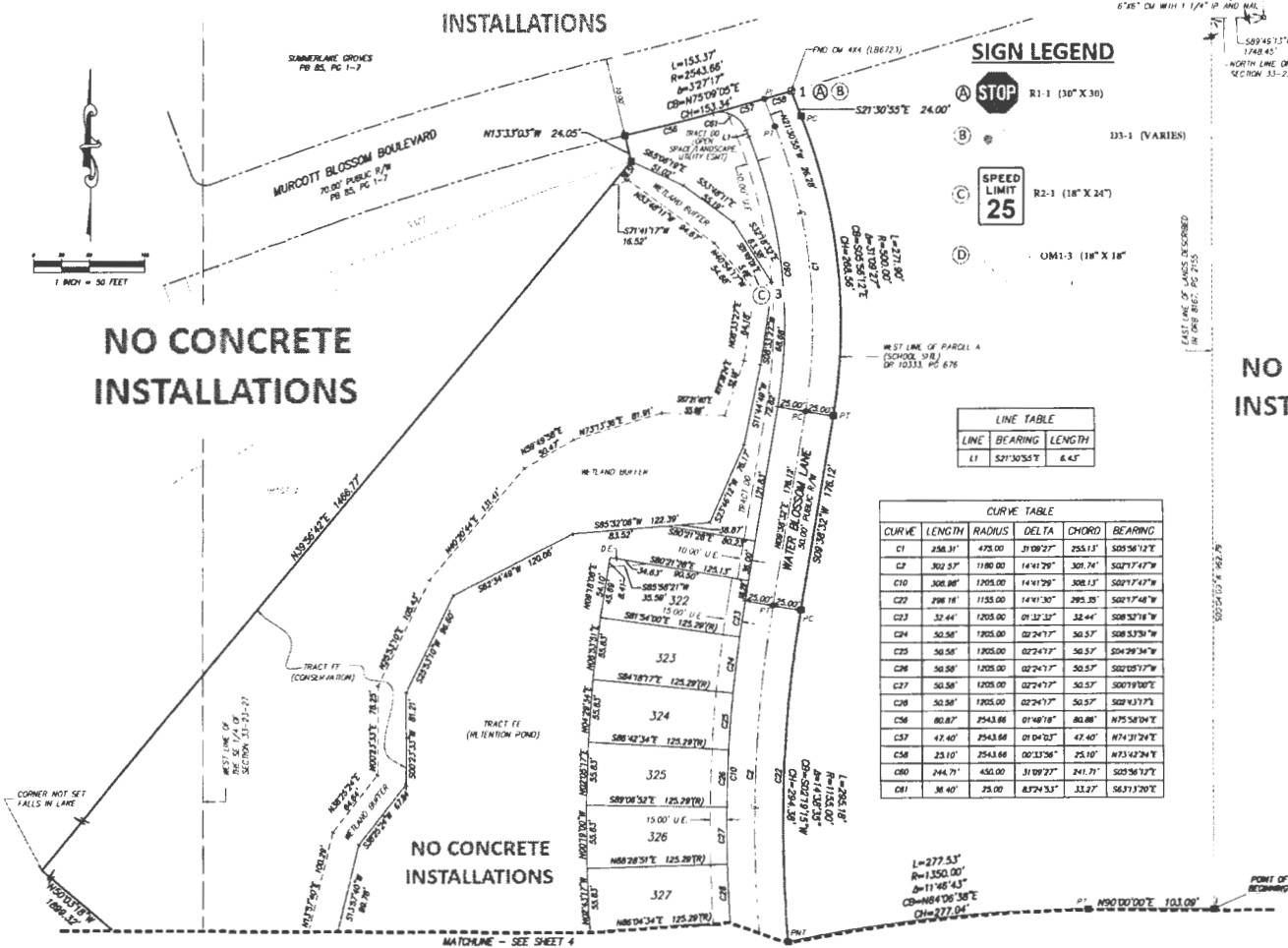
- (A) STOP** R1-1 (30" X 30")
- (B)** 133-1 (VARIES)
- (C) SPEED LIMIT 25** R2-1 (18" X 24")
- (D)** UM1-3 (18" X 18")

LINE TABLE

LINE	BEARING	LENGTH
L1	S21°30'55"E	6.43'

CURVE TABLE

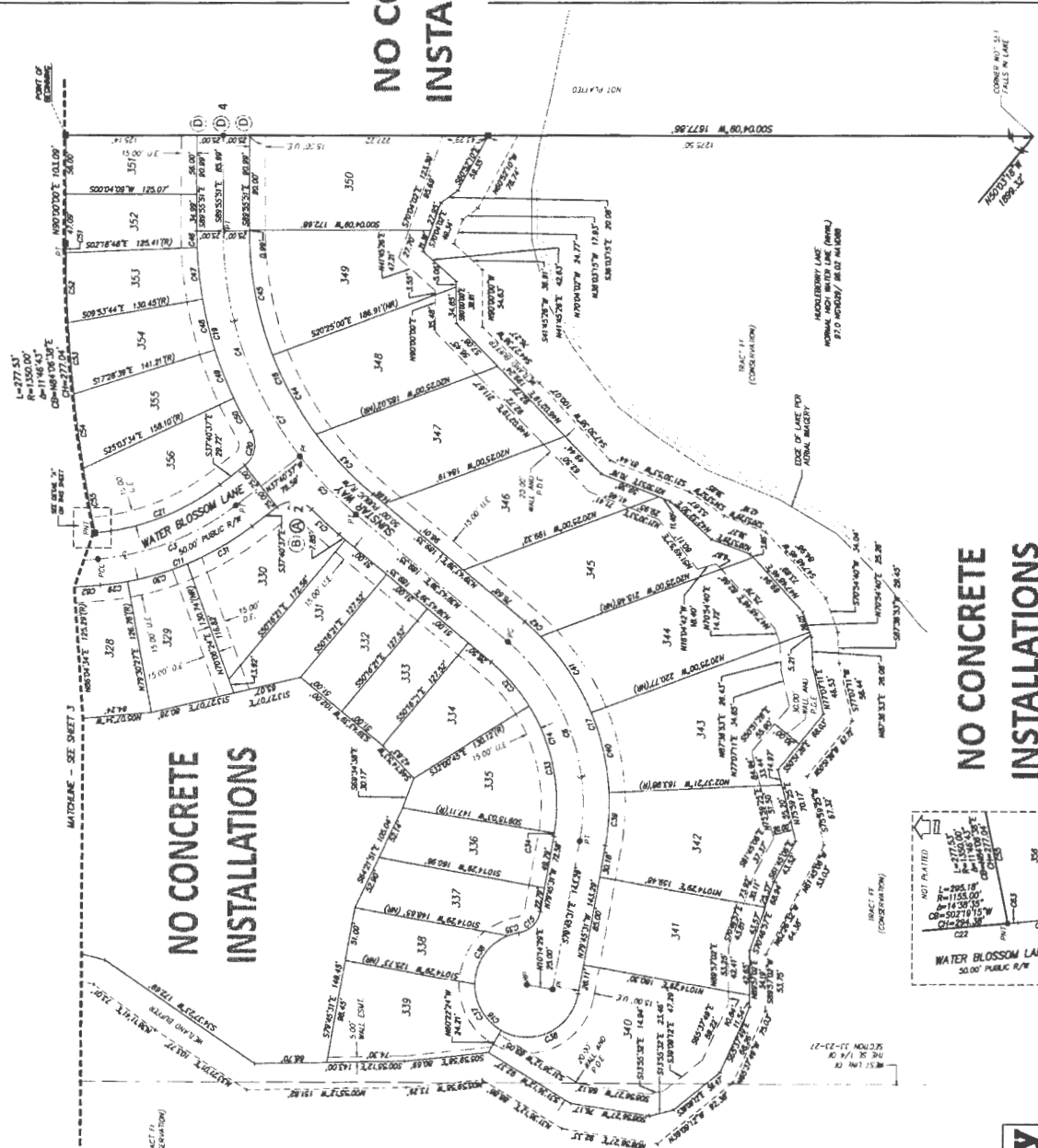
CURVE	LENGTH	RADIUS	DELTA	CHORD	BEARING
C1	236.31'	475.00'	31°09'27"	255.13'	S05°56'12"E
C2	302.57'	1180.00'	14°41'29"	301.74'	S02°17'47"W
C10	308.88'	1205.00'	14°41'29"	308.13'	S02°17'47"W
C22	298.18'	1155.00'	14°41'30"	295.25'	S02°17'48"W
C23	32.44'	1205.00'	01°32'33"	32.44'	S08°32'18"W
C24	50.58'	1205.00'	02°24'17"	50.57'	S08°33'39"W
C25	50.58'	1205.00'	02°24'17"	50.57'	S04°29'34"W
C26	50.58'	1205.00'	02°24'17"	50.57'	S02°05'17"W
C27	50.58'	1205.00'	02°24'17"	50.57'	S00°19'00"E
C28	50.58'	1205.00'	02°24'17"	50.57'	S02°13'17"E
C26	80.87'	2543.86'	01°48'18"	80.88'	N75°58'04"E
C27	47.40'	2543.86'	01°04'03"	47.40'	N74°31'24"E
C28	25.10'	2543.86'	00°33'58"	25.10'	N73°42'24"E
C80	244.71'	450.00'	31°09'27"	241.71'	S05°56'12"E
C81	8.40'	75.00'	87°24'53"	33.27'	S63°17'20"E



Dewberry
131 WEST GALLEY STREET
ORLANDO, FLORIDA 32808
PHONE: 321.254.9620 FAX: 407.848.8104
WWW.DEWBERRY.COM
CERTIFICATE OF AUTHORIZATION NO. LB 2011

SHEET 3 OF 4

HIGHLANDS AT SUMMERLAKE GROVES PHASE 3C
SITUATED IN SECTION 33, TOWNSHIP 23 SOUTH, RANGE 27 EAST, ORANGE COUNTY, FLORIDA



**NO CONCRETE
INSTALLATIONS**

**NO CONCRETE
INSTALLATIONS**

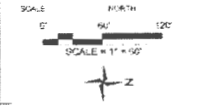
**NO CONCRETE
INSTALLATIONS**



CURVE TABLE

CURVE	LENGTH	RADIUS	TO TA	CHORD	BEARING
C1	142.37	140.00	81.2746°	140.00	107.9172°
C2	142.37	140.00	127.944°	140.00	146.7378°
C3	142.37	140.00	154.614°	140.00	185.5584°
C4	142.37	140.00	181.284°	140.00	224.3790°
C5	142.37	140.00	207.954°	140.00	263.1996°
C6	142.37	140.00	234.624°	140.00	302.0202°
C7	142.37	140.00	261.294°	140.00	340.8408°
C8	142.37	140.00	287.964°	140.00	379.6614°
C9	142.37	140.00	314.634°	140.00	418.4820°
C10	142.37	140.00	341.304°	140.00	457.3026°
C11	142.37	140.00	367.974°	140.00	496.1232°
C12	142.37	140.00	394.644°	140.00	534.9438°
C13	142.37	140.00	421.314°	140.00	573.7644°
C14	142.37	140.00	447.984°	140.00	612.5850°
C15	142.37	140.00	474.654°	140.00	651.4056°
C16	142.37	140.00	501.324°	140.00	690.2262°
C17	142.37	140.00	527.994°	140.00	729.0468°
C18	142.37	140.00	554.664°	140.00	767.8674°
C19	142.37	140.00	581.334°	140.00	806.6880°
C20	142.37	140.00	608.004°	140.00	845.5086°
C21	142.37	140.00	634.674°	140.00	884.3292°
C22	142.37	140.00	661.344°	140.00	923.1498°
C23	142.37	140.00	688.014°	140.00	961.9704°
C24	142.37	140.00	714.684°	140.00	1000.7910°
C25	142.37	140.00	741.354°	140.00	1039.6116°
C26	142.37	140.00	768.024°	140.00	1078.4322°
C27	142.37	140.00	794.694°	140.00	1117.2528°
C28	142.37	140.00	821.364°	140.00	1156.0734°
C29	142.37	140.00	848.034°	140.00	1194.8940°
C30	142.37	140.00	874.704°	140.00	1233.7146°
C31	142.37	140.00	901.374°	140.00	1272.5352°
C32	142.37	140.00	928.044°	140.00	1311.3558°
C33	142.37	140.00	954.714°	140.00	1350.1764°
C34	142.37	140.00	981.384°	140.00	1388.9970°
C35	142.37	140.00	1008.054°	140.00	1427.8176°
C36	142.37	140.00	1034.724°	140.00	1466.6382°
C37	142.37	140.00	1061.394°	140.00	1505.4588°
C38	142.37	140.00	1088.064°	140.00	1544.2794°
C39	142.37	140.00	1114.734°	140.00	1583.0999°
C40	142.37	140.00	1141.404°	140.00	1621.9205°
C41	142.37	140.00	1168.074°	140.00	1660.7411°
C42	142.37	140.00	1194.744°	140.00	1699.5617°
C43	142.37	140.00	1221.414°	140.00	1738.3823°
C44	142.37	140.00	1248.084°	140.00	1777.2029°
C45	142.37	140.00	1274.754°	140.00	1816.0235°
C46	142.37	140.00	1301.424°	140.00	1854.8441°
C47	142.37	140.00	1328.094°	140.00	1893.6647°
C48	142.37	140.00	1354.764°	140.00	1932.4853°
C49	142.37	140.00	1381.434°	140.00	1971.3059°
C50	142.37	140.00	1408.104°	140.00	2010.1265°
C51	142.37	140.00	1434.774°	140.00	2048.9471°
C52	142.37	140.00	1461.444°	140.00	2087.7677°
C53	142.37	140.00	1488.114°	140.00	2126.5883°
C54	142.37	140.00	1514.784°	140.00	2165.4089°
C55	142.37	140.00	1541.454°	140.00	2204.2295°
C56	142.37	140.00	1568.124°	140.00	2243.0501°
C57	142.37	140.00	1594.794°	140.00	2281.8707°
C58	142.37	140.00	1621.464°	140.00	2320.6913°
C59	142.37	140.00	1648.134°	140.00	2359.5119°
C60	142.37	140.00	1674.804°	140.00	2398.3325°
C61	142.37	140.00	1701.474°	140.00	2437.1531°
C62	142.37	140.00	1728.144°	140.00	2475.9737°
C63	142.37	140.00	1754.814°	140.00	2514.7943°
C64	142.37	140.00	1781.484°	140.00	2553.6149°
C65	142.37	140.00	1808.154°	140.00	2592.4355°
C66	142.37	140.00	1834.824°	140.00	2631.2561°
C67	142.37	140.00	1861.494°	140.00	2670.0767°
C68	142.37	140.00	1888.164°	140.00	2708.8973°
C69	142.37	140.00	1914.834°	140.00	2747.7179°
C70	142.37	140.00	1941.504°	140.00	2786.5385°
C71	142.37	140.00	1968.174°	140.00	2825.3591°
C72	142.37	140.00	1994.844°	140.00	2864.1797°
C73	142.37	140.00	2021.514°	140.00	2903.0003°
C74	142.37	140.00	2048.184°	140.00	2941.8209°
C75	142.37	140.00	2074.854°	140.00	2980.6415°
C76	142.37	140.00	2101.524°	140.00	3019.4621°
C77	142.37	140.00	2128.194°	140.00	3058.2827°
C78	142.37	140.00	2154.864°	140.00	3097.1033°
C79	142.37	140.00	2181.534°	140.00	3135.9239°
C80	142.37	140.00	2208.204°	140.00	3174.7445°
C81	142.37	140.00	2234.874°	140.00	3213.5651°
C82	142.37	140.00	2261.544°	140.00	3252.3857°
C83	142.37	140.00	2288.214°	140.00	3291.2063°
C84	142.37	140.00	2314.884°	140.00	3330.0269°
C85	142.37	140.00	2341.554°	140.00	3368.8475°
C86	142.37	140.00	2368.224°	140.00	3407.6681°
C87	142.37	140.00	2394.894°	140.00	3446.4887°
C88	142.37	140.00	2421.564°	140.00	3485.3093°
C89	142.37	140.00	2448.234°	140.00	3524.1299°
C90	142.37	140.00	2474.904°	140.00	3562.9505°
C91	142.37	140.00	2501.574°	140.00	3601.7711°
C92	142.37	140.00	2528.244°	140.00	3640.5917°
C93	142.37	140.00	2554.914°	140.00	3679.4123°
C94	142.37	140.00	2581.584°	140.00	3718.2329°
C95	142.37	140.00	2608.254°	140.00	3757.0535°
C96	142.37	140.00	2634.924°	140.00	3795.8741°
C97	142.37	140.00	2661.594°	140.00	3834.6947°
C98	142.37	140.00	2688.264°	140.00	3873.5153°
C99	142.37	140.00	2714.934°	140.00	3912.3359°
C100	142.37	140.00	2741.604°	140.00	3951.1565°

Dewberry
131 WEST GALLERY STREET
ORLANDO, FLORIDA 32801
PHONE: 407.255.8800 FAX: 407.446.8704
CENTRAL FLORIDA REGISTRATION NO. LB 0011



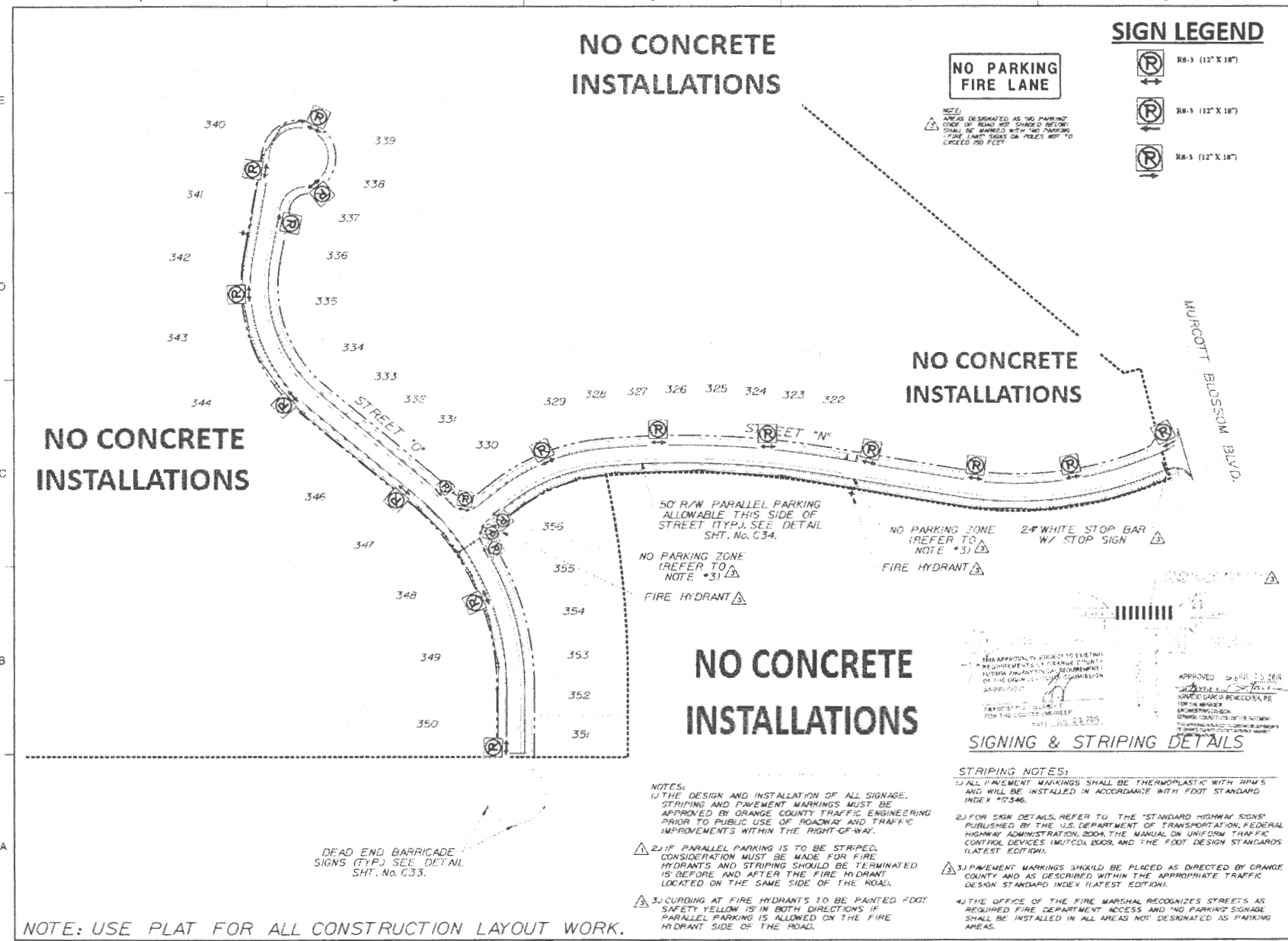
DESIGNED BY	DATE
CHECKED BY	DATE
DATE	NOVEMBER 2012
DRAWN	NOV 20 12

STRIPING PLAN

PROJECT NO. 080101PHASE 3C(08-11)11

C29

SHEET NO.



NO CONCRETE INSTALLATIONS

NO PARKING FIRE LANE

SIGN LEGEND

- R8-3 (12" X 18")
- R8-3 (12" X 18")
- R8-3 (12" X 18")

NOTE:
 AREAS DESIGNATED AS "NO PARKING ZONE" SHALL BE MARKED WITH "NO PARKING" FIRE LANE SIGNS ON POLES NOT TO EXCEED 100 FEET.

NO CONCRETE INSTALLATIONS

NO CONCRETE INSTALLATIONS

50' R/W PARALLEL PARKING ALLOWABLE THIS SIDE OF STREET (TYP.) SEE DETAIL SHT. No. C34.

NO PARKING ZONE (REFER TO NOTE *3)

NO PARKING ZONE (REFER TO NOTE *3)
 FIRE HYDRANT

24' WHITE STOP BAR W/ STOP SIGN

NO CONCRETE INSTALLATIONS

SIGNING & STRIPING DETAILS

STRIPING NOTES:

- 1) ALL PAVEMENT MARKINGS SHALL BE THERMOPLASTIC WITH RPM'S AND WILL BE INSTALLED IN ACCORDANCE WITH FOOT STANDARD INDEX #7346.
- 2) FOR SIGN DETAILS, REFER TO THE "STANDARD HIGHWAY SIGNS" PUBLISHED BY THE U.S. DEPARTMENT OF TRANSPORTATION, FEDERAL HIGHWAY ADMINISTRATION, 2004, THE MANUAL ON UNIFORM TRAFFIC CONTROL DEVICES (MUTCD, 2003), AND THE FOOT DESIGN STANDARDS (LATEST EDITION).
- 3) PAVEMENT MARKINGS SHOULD BE PLACED AS DIRECTED BY ORANGE COUNTY AND AS DESCRIBED WITHIN THE APPROPRIATE TRAFFIC DESIGN STANDARD INDEX (LATEST EDITION).
- 4) THE OFFICE OF THE FIRE MARSHAL RECOGNIZES STREETS AS REQUIRED FIRE DEPARTMENT ACCESS AND "NO PARKING" SIGNAGE SHALL BE INSTALLED IN ALL AREAS NOT DESIGNATED AS PARKING AREAS.

NOTES:

- 1) THE DESIGN AND INSTALLATION OF ALL SIGNAGE, STRIPING AND PAVEMENT MARKINGS MUST BE APPROVED BY ORANGE COUNTY TRAFFIC ENGINEERING PRIOR TO PUBLIC USE OF ROADWAY AND TRAFFIC IMPROVEMENTS WITHIN THE RIGHT-OF-WAY.
- 2) IF PARALLEL PARKING IS TO BE STRIPED, CONSIDERATION MUST BE MADE FOR FIRE HYDRANTS AND STRIPING SHOULD BE TERMINATED 15' BEFORE AND AFTER THE FIRE HYDRANT LOCATED ON THE SAME SIDE OF THE ROAD.
- 3) CURBING AT FIRE HYDRANTS TO BE PAINTED FOOT SAFETY YELLOW 15' IN BOTH DIRECTIONS IF PARALLEL PARKING IS ALLOWED ON THE FIRE HYDRANT SIDE OF THE ROAD.

DEAD END BARRICADE SIGNS (TYP.) SEE DETAIL SHT. No. C33.

NOTE: USE PLAT FOR ALL CONSTRUCTION LAYOUT WORK.