

County Protected Lands

Committee: Sustainable Growth and Charter Cleanup

Members: Eric Grimmer
 Eugene Stoccardo
 Rishi Bagga
 Tom Callan
 Chuck O'Neal
 Dick Batchelor

County Protected Lands

Toll road approved to cut through Split Oak Forest

State wildlife commission backs deal trading conservation easement for 1,550 acres of new land and \$43 million

Orlando airport seeks to break promise to protect a lake 'forever' as critics fear a development ploy

Earlier this year, airport managers quietly approached the local water management director to remove environmental restrictions

State errors treated legendary Hal Scott preserve as environmental scrap. Here's why that matters.

Why the Florida Wildlife Corridor couldn't save Split Oak Forest

County Protected Lands

JUNE 7, 2017

Parks can Play a Major Role in Managing Stormwater

Evidence: Parks Are Really Good for Mental, Physical, and Environmental Health

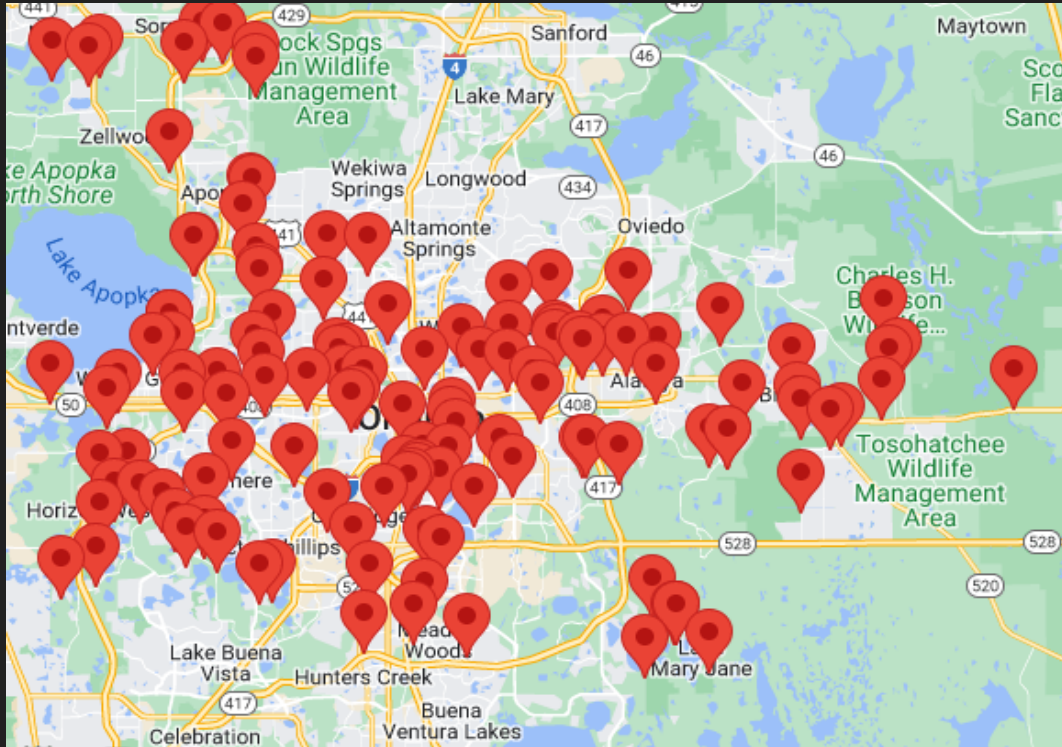
Putting a Dollar Value on the Benefits of Protected Open Space

Impact of Local Park and Recreation Agencies on the U.S. Economy – 2021

	Economic Activity	Employment
Total Impact	\$201.4 billion	1,065,832 jobs
Operations Spending	\$102.1 billion	609,093 jobs
Capital Spending	\$99.3 billion	456,739 jobs

Sources: IMPLAN and Center for Regional Analysis – George Mason University for NRPA, U.S. Census Bureau

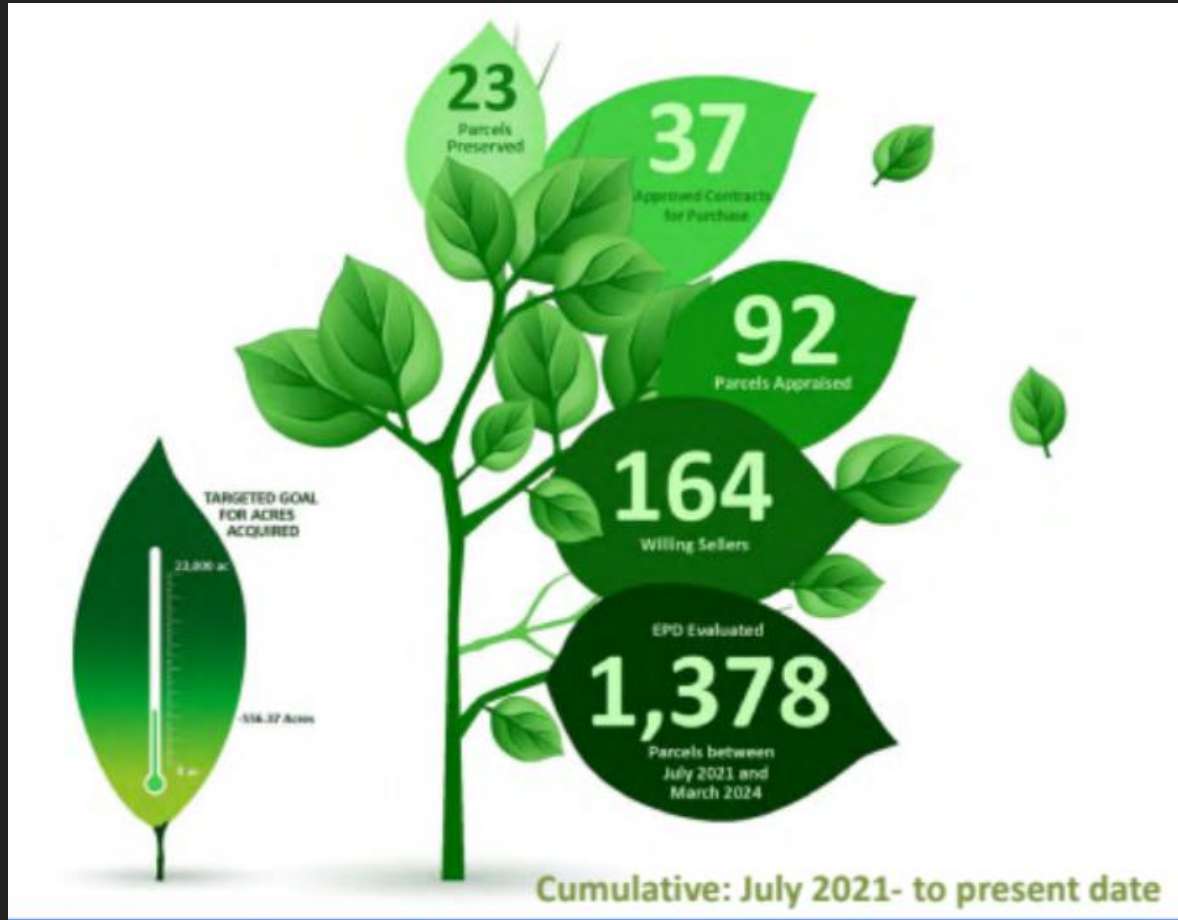
County Protected Lands: Parks



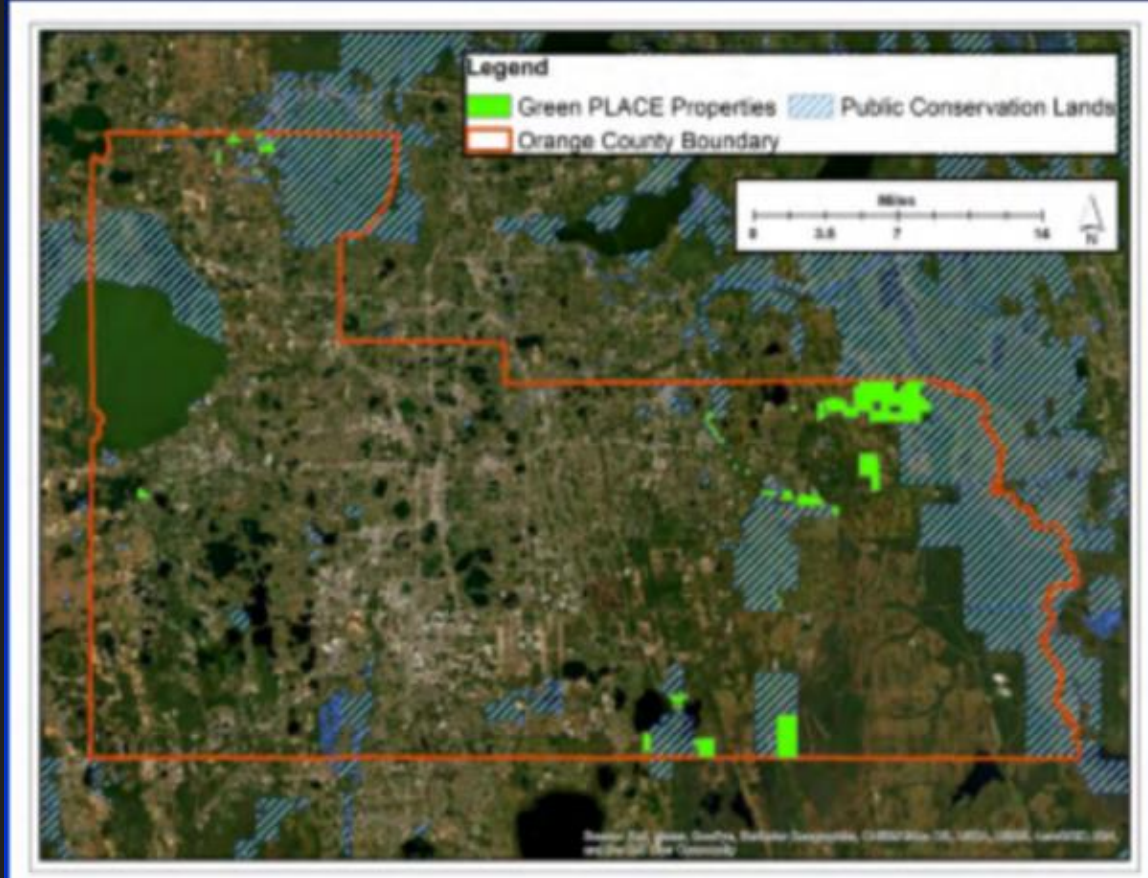
R1.1.4

Public park or recreation areas operated or maintained by Orange County shall not be converted to other uses, except by determination of the Board of County Commissioners that such conversion is in the public interest. Orange County shall seek appropriate compensation or replacement land if such land is taken.

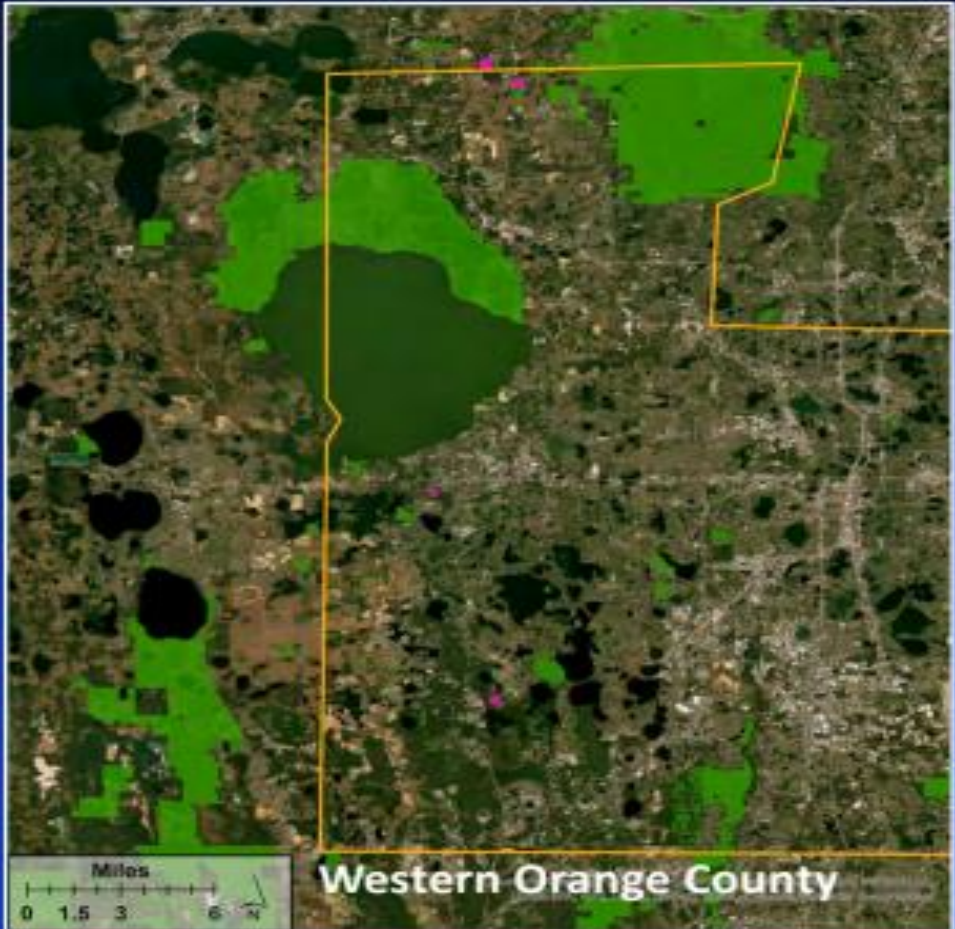
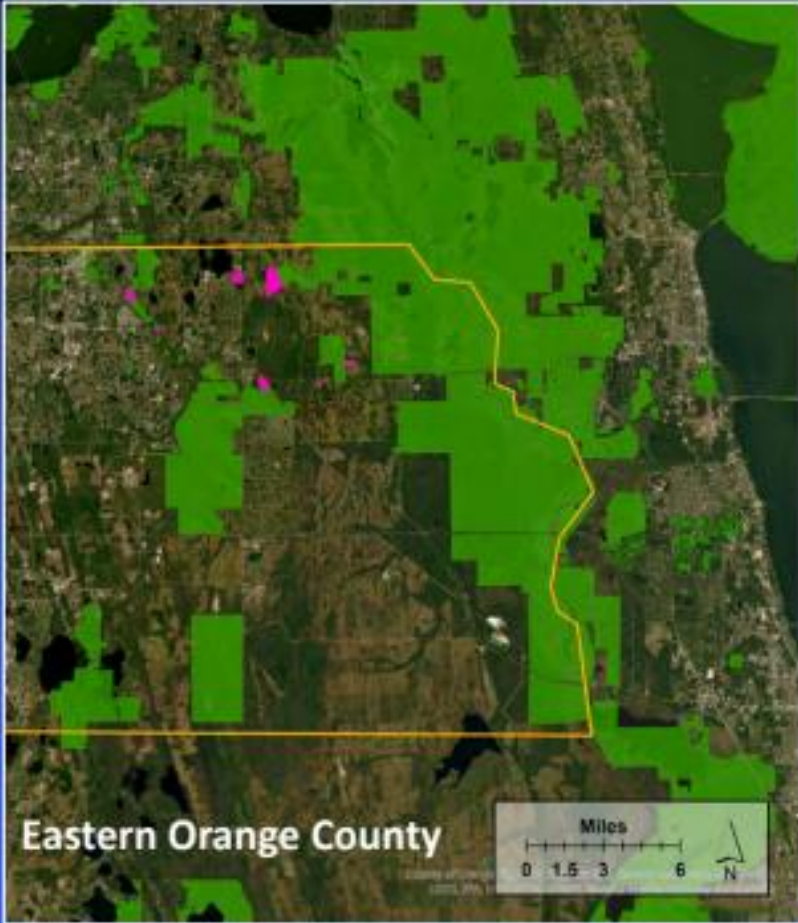
County Protected Lands: Conservation Land (Green Place)



County Protected Lands: Conservation Land (Green Place)

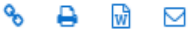


County Protected Lands: Conservation Land (Green Place)



County Protected Lands: The Pinellas Model

Sec. 2.07. - Environmental lands.



- (a) The preservation of environmental lands as defined herein within Pinellas County supports the sustainability of natural resources, watersheds, and natural habitat; provides resource-based recreational opportunities; and promotes a healthy environment and community.
- (b) Environmental lands subject to the provisions of this Charter are those **county-owned lands designated as environmental lands** pursuant to section 90-112, Pinellas County Code, and include county-owned lands within the Allen's Creek Management Area, Alligator Lake Management Area, Anclote Islands Management Area, Brooker Creek Preserve, Cabbage Key Management Area, Cow Branch Management Area, East Lake Management Area, Joe's Creek Management Area, King Islands Management Area, Lake Seminole Management Area, Lake Tarpon Management Area, Lake Tarpon West Management Area, Long Branch Management Area, Mariner's Point Management Area, Mobbly Bayou Preserve, Ozona Management Area, Shell Key Preserve, Travatine Island Management Area and Weedon Island Preserve.
- (c) Additional county-owned lands may be designated as environmental lands subject to the provisions of this Charter by adoption of an ordinance by the board of county commissioners.
- (d) The environmental lands designation may be removed from county-owned lands by adoption of an ordinance by the board of county commissioners and approval by a majority vote of the electors of Pinellas County in a referendum held at a general or special election called by the board of county commissioners, if the lands affected constitute more than one acre within a designated facility, or by adoption of an ordinance by the board of county commissioners if the lands affected constitute one acre or less within a designated facility.
- (e) The county shall not sell, convey, or transfer any fee simple interest in county-owned lands designated as environmental lands subject to the provisions of this Charter, and the county shall not lease or license for a period longer than ten years any interest in county-owned lands designated as environmental lands subject to the provisions of this Charter, unless authorized by a majority vote of the electors of Pinellas County in a referendum held at a general or special election called by the board of county commissioners.