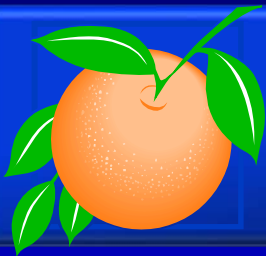




Board of County Commissioners

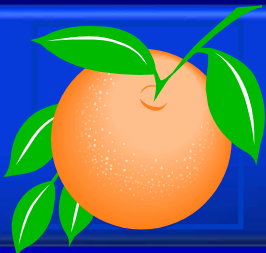
Public Hearings

March 7, 2017

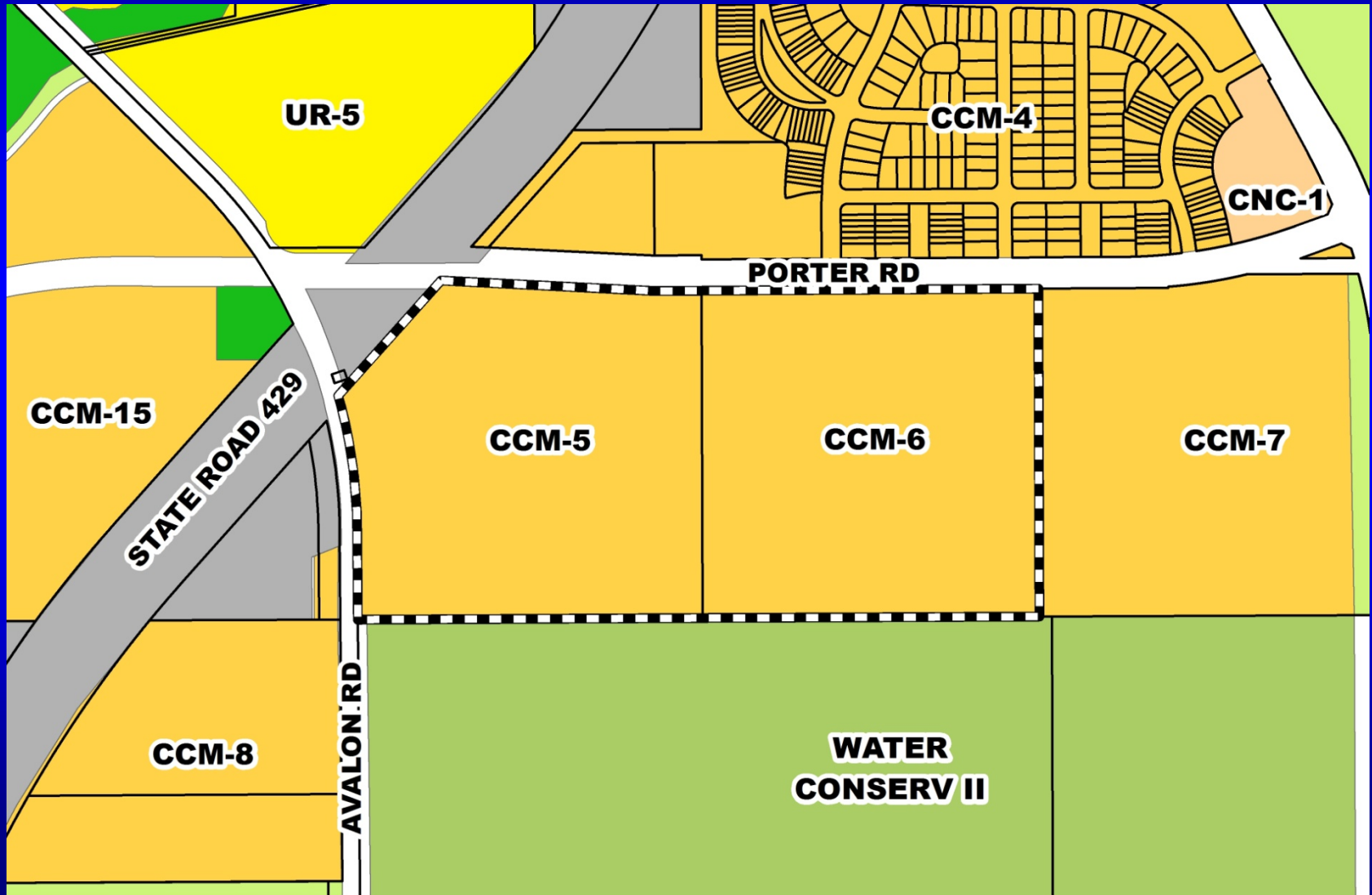


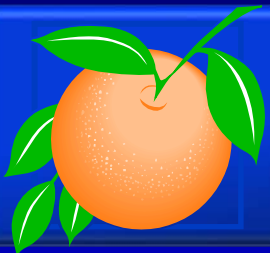
Orlando Health Central Porter Road Medical Campus Planned Development / Land Use Plan (PD/LUP)

| | |
|----------------------|--|
| Case: | CDR-16-07-233 |
| Project Name: | Orlando Health Central Porter Road Medical Campus PD/LUP |
| Applicant: | Anthony Concolino, KMA Design |
| District: | 1 |
| Acreage: | 73.59 gross acres |
| Location: | South of Porter Road / East of Avalon Road |
| Request: | To incorporate a Master Sign Plan (MSP) in order to accommodate additional signage. |

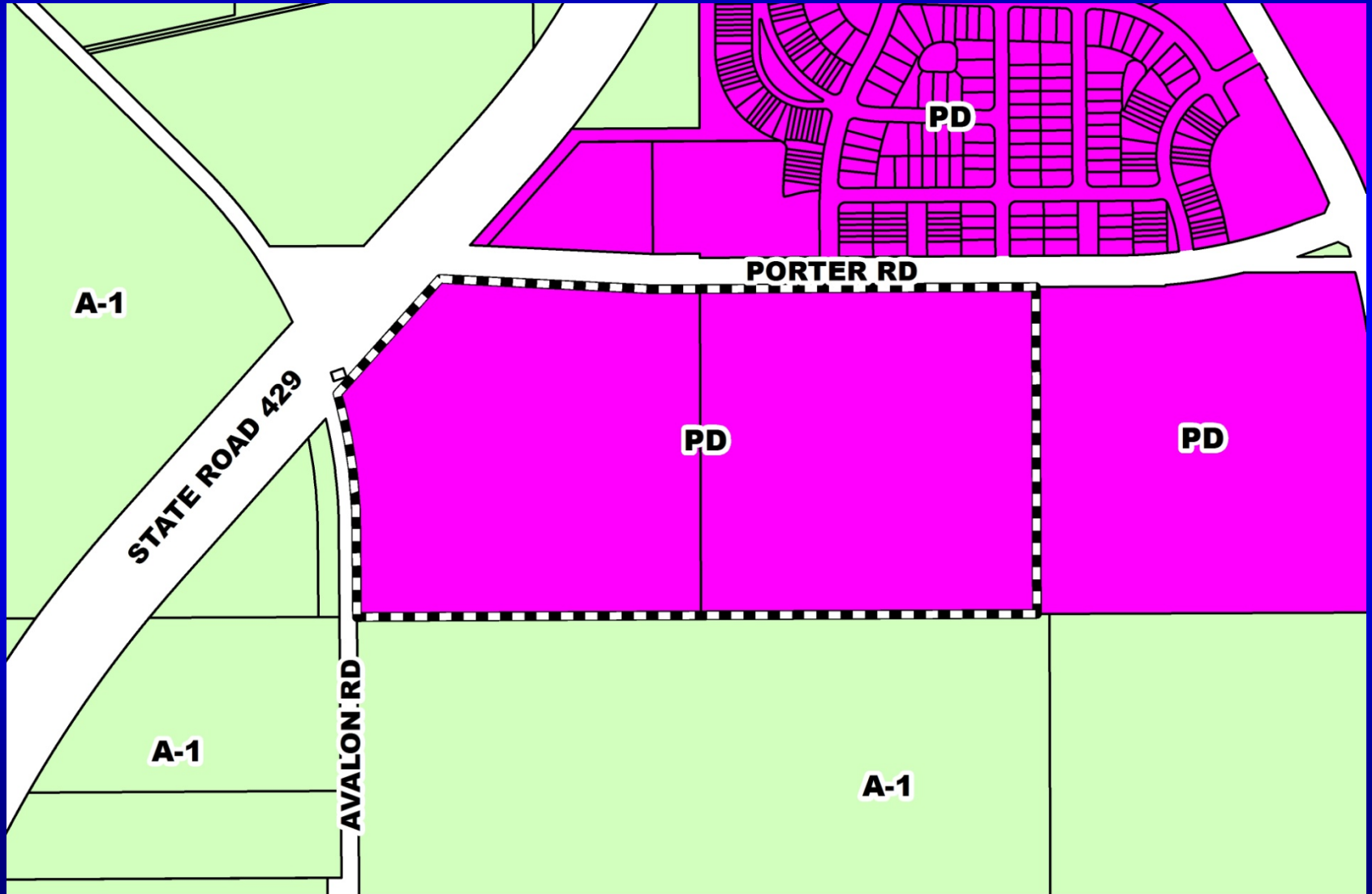


Orlando Health Central Porter Road Medical Campus Planned Development / Land Use Plan (PD/LUP) Future Land Use Map



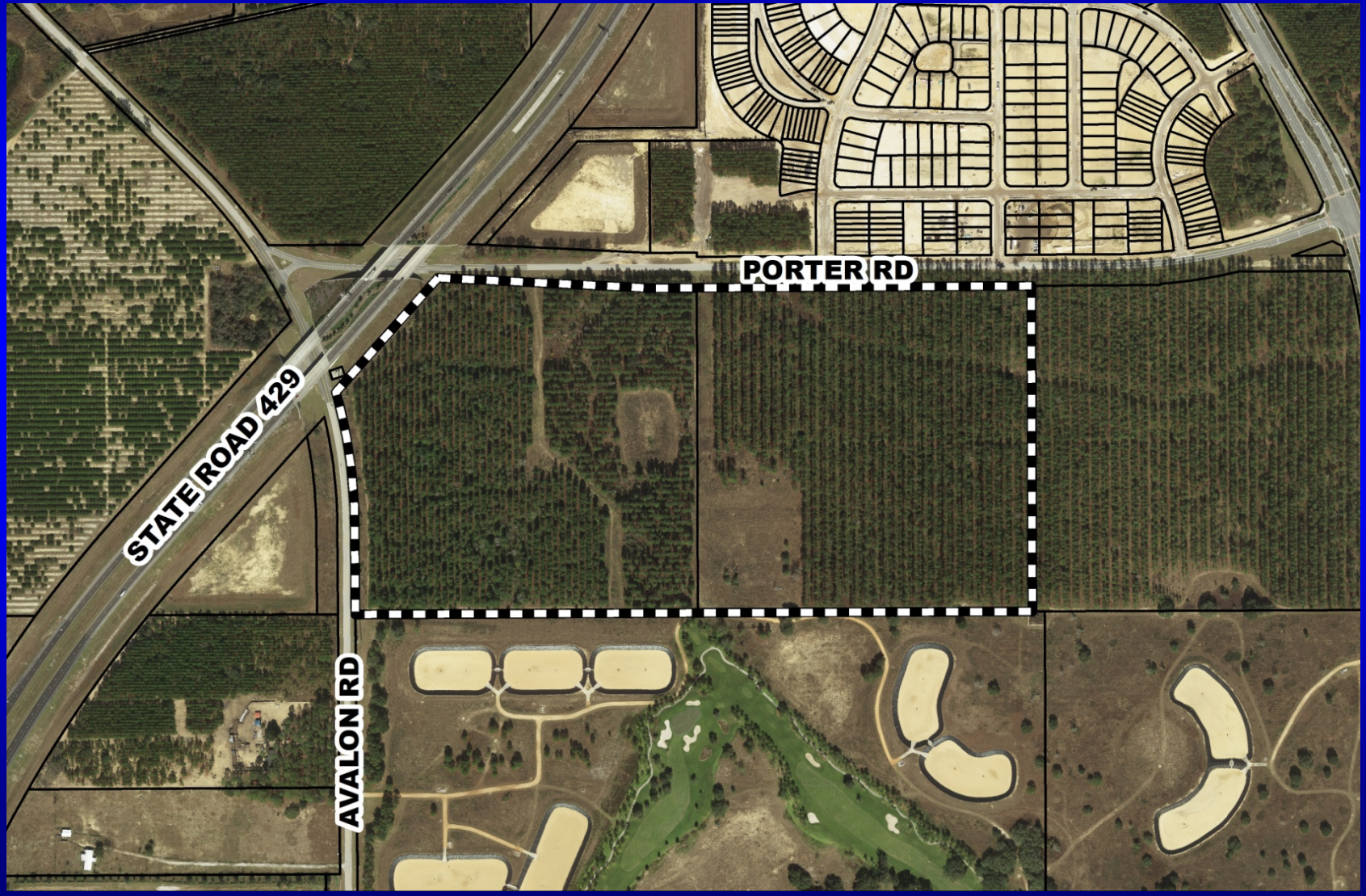


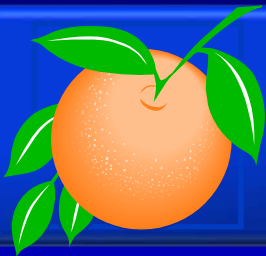
Orlando Health Central Porter Road Medical Campus Planned Development / Land Use Plan (PD/LUP) Zoning Map



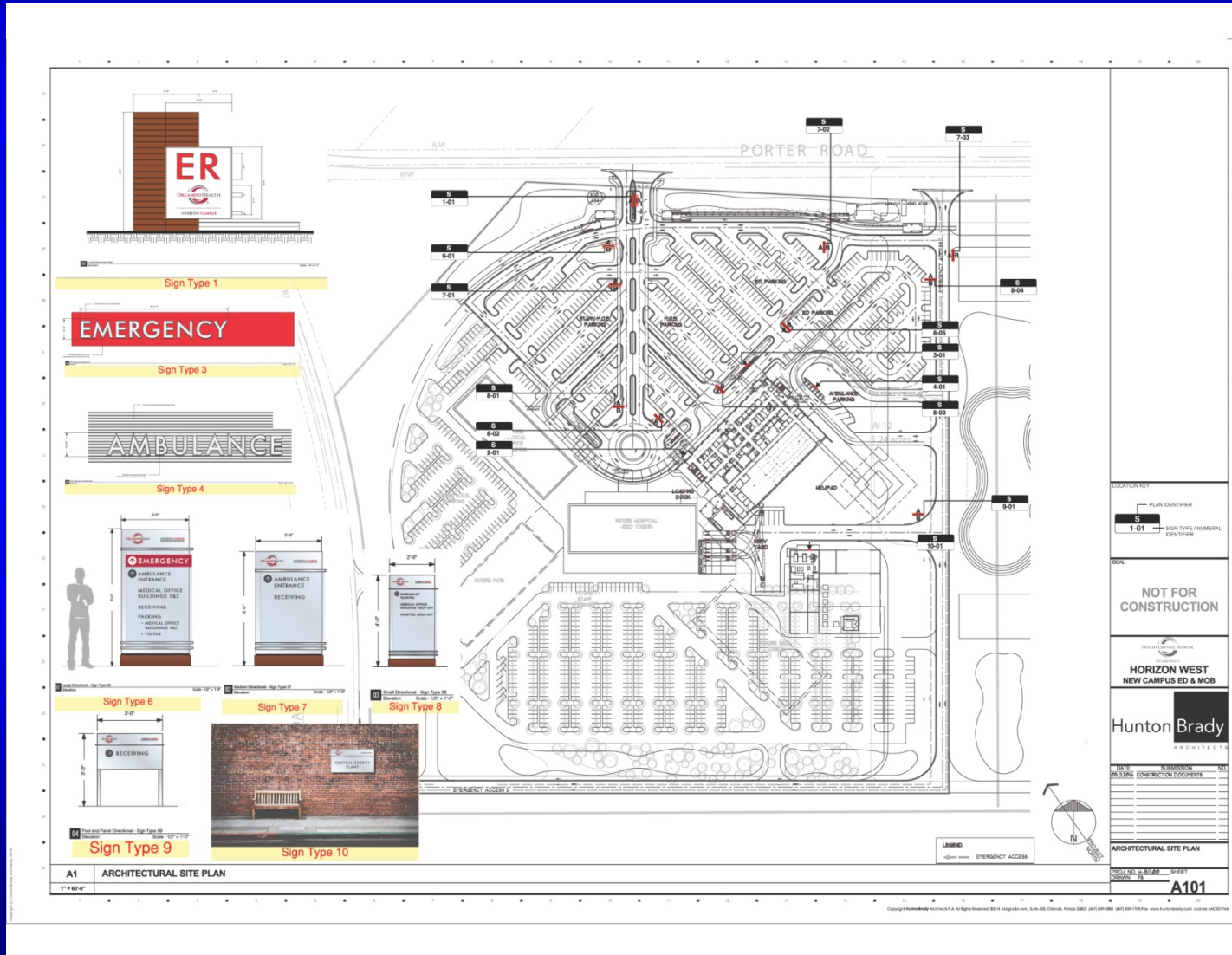


Orlando Health Central Porter Road Medical Campus Planned Development / Land Use Plan (PD/LUP) Aerial Map





Orlando Health Central Porter Road Medical Campus Planned Development / Land Use Plan (PD/LUP)



Sign Type 1



Sign Type 3



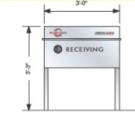
Sign Type 4



Sign Type 6

Sign Type 7

Sign Type 8



Sign Type 9



Sign Type 10

LOCATION KEY

| | |
|--------|----------------------------------|
| S | PLAN IDENTIFIER |
| S 1-01 | SIGN TYPE / NUMERICAL IDENTIFIER |

SCALE

NOT FOR CONSTRUCTION

HORIZON WEST
NEW CAMPUS ED & MOB

Hunton Brady
ARCHITECTS

| DATE | SUBMISSION | NO. |
|----------|------------------------|-----|
| 09/20/16 | CONSTRUCTION DOCUMENTS | 1 |

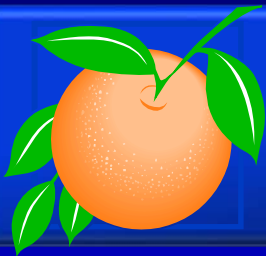
ARCHITECTURAL SITE PLAN

PROJECT NO. 16166 SHEET

A101

A1 ARCHITECTURAL SITE PLAN

1" = 80'-0"



Action Requested

Make a finding of consistency with the Comprehensive Plan (CP) and approve the substantial change to the Orlando Health Central Porter Road Medical Campus Planned Development / Land Use Plan (PD/LUP) dated “Received October 28, 2016”, subject to the conditions listed under the DRC Recommendation in the Staff Report.

District 1