



Interoffice Memorandum

January 18, 2019

TO: Mayor Jerry L. Demings
and Board of County Commissioners

FROM: *fx* Mark V. Massaro, P.E., Director, Public Works Department *[Signature]*

CONTACT PERSON: Christine N. Lofye, P. E., Manager *[Signature]*
Traffic Engineering Division

PHONE NUMBER: (407) 836-7890

SUBJ: Installation of "No Parking" signs at Apopka Vineland Road bus pull-outs

Residents living along Apopka Vineland Road have expressed concerns related to the parking of semi-trucks at bus pull-outs at the following three locations:

- North and south of Promenade Drive in both the northbound and southbound directions
- South of Bay Meadows Elementary School in both the northbound and southbound directions
- Between 5th Street and Jureane Drive in both the northbound and southbound directions

Traffic Engineering supports a parking restriction at these bus pull-outs as parking at these locations is not consistent with the intended use.

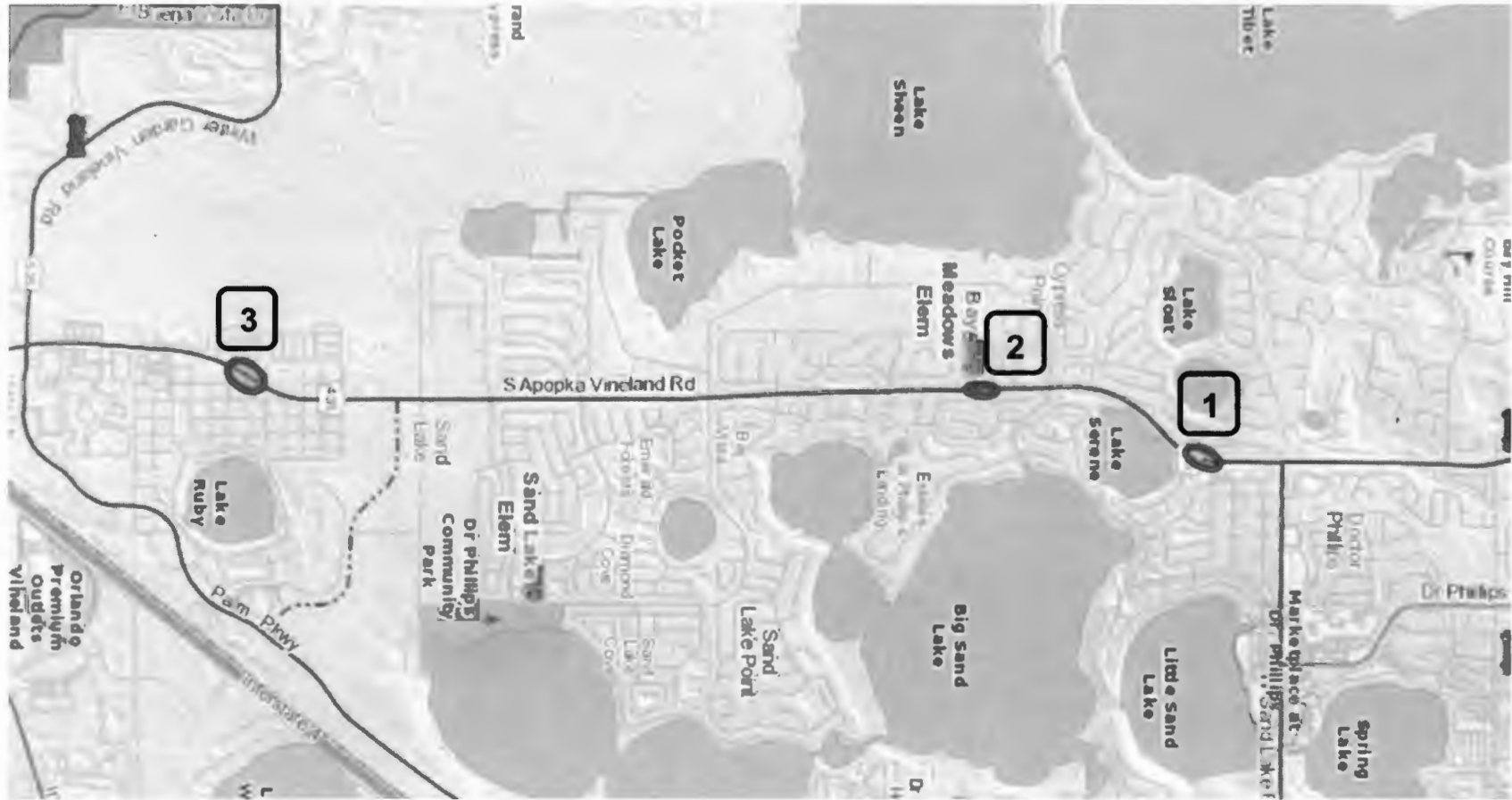
Staff recommends approval of "No Parking" signs installation within bus pull-outs on Apopka Vineland Road.

Action Requested: Approval of "No Parking" signs installation within bus pull-outs on Apopka Vineland Road. District 1.

MVM/CNL/LT

Attachments

Apopka Vineland Rd Consent Agenda Location Map



District 1: Commissioner Betsy VanderLey

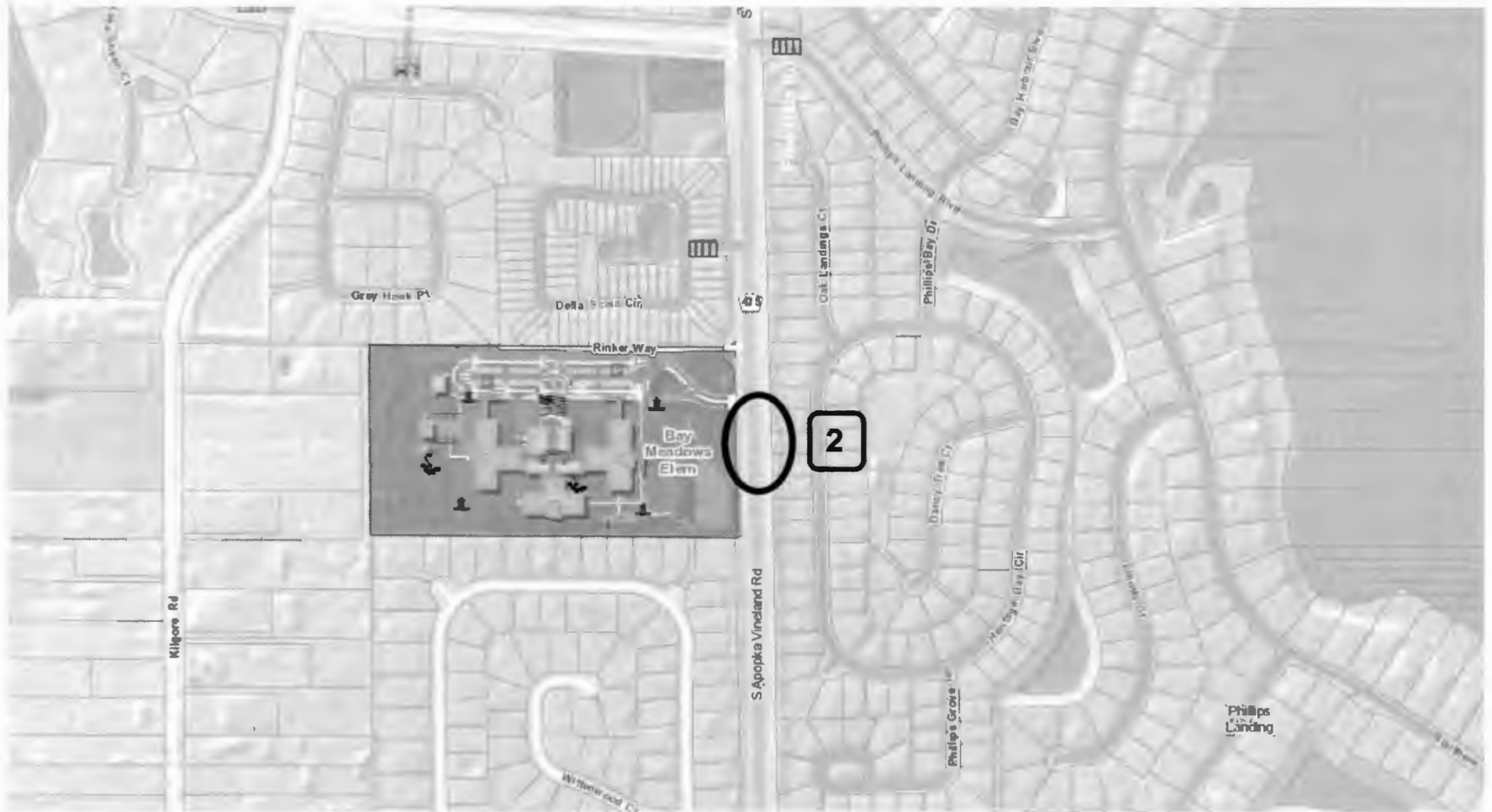


Apopka Vineland Rd Consent Agenda Location Map



District 1: Commissioner Betsy VanderLey

Apopka Vineland Rd Consent Agenda Location Map



District 1: Commissioner Betsy VanderLey



Apopka Vineland Rd Consent Agenda Location Map



District 1: Commissioner Betsy VanderLey



BAY MEADOWS
ELEMENTARY SCHOOL

APOPKA VINELAND RD



INSTALL
R8-3 WITH ARROW
(2018.5)



INSTALL
R8-3 WITH ARROW
(2018.5)



85

185

REMOVE
W08BY FOLLOW E' B' &
T1215A



REMOVE
W08BY FOLLOW E' B' &
T1215A



REVISIONS		
DATE	BY	DESCRIPTION

ORANGE COUNTY PUBLIC WORKS
TRAFFIC ENGINEERING DIVISION
400 SOUTH JOHN YOUNG PARKWAY
ORLANDO, FLORIDA 32818-1024
(407) 836-7808



DRAWN BY: Joshua Gonzalez	DATE: 1/17/19
REVISED BY: Lashon Torres	DATE: 1/17/19
APPROVED BY: Humberto Castellano	DATE: 1/17/19

APOPKA VINELAND RD AT BAY
MEADOWS ELEMENTARY SCHOOL

DRAWING SCALE: NPS
SHEET 1 OF 1



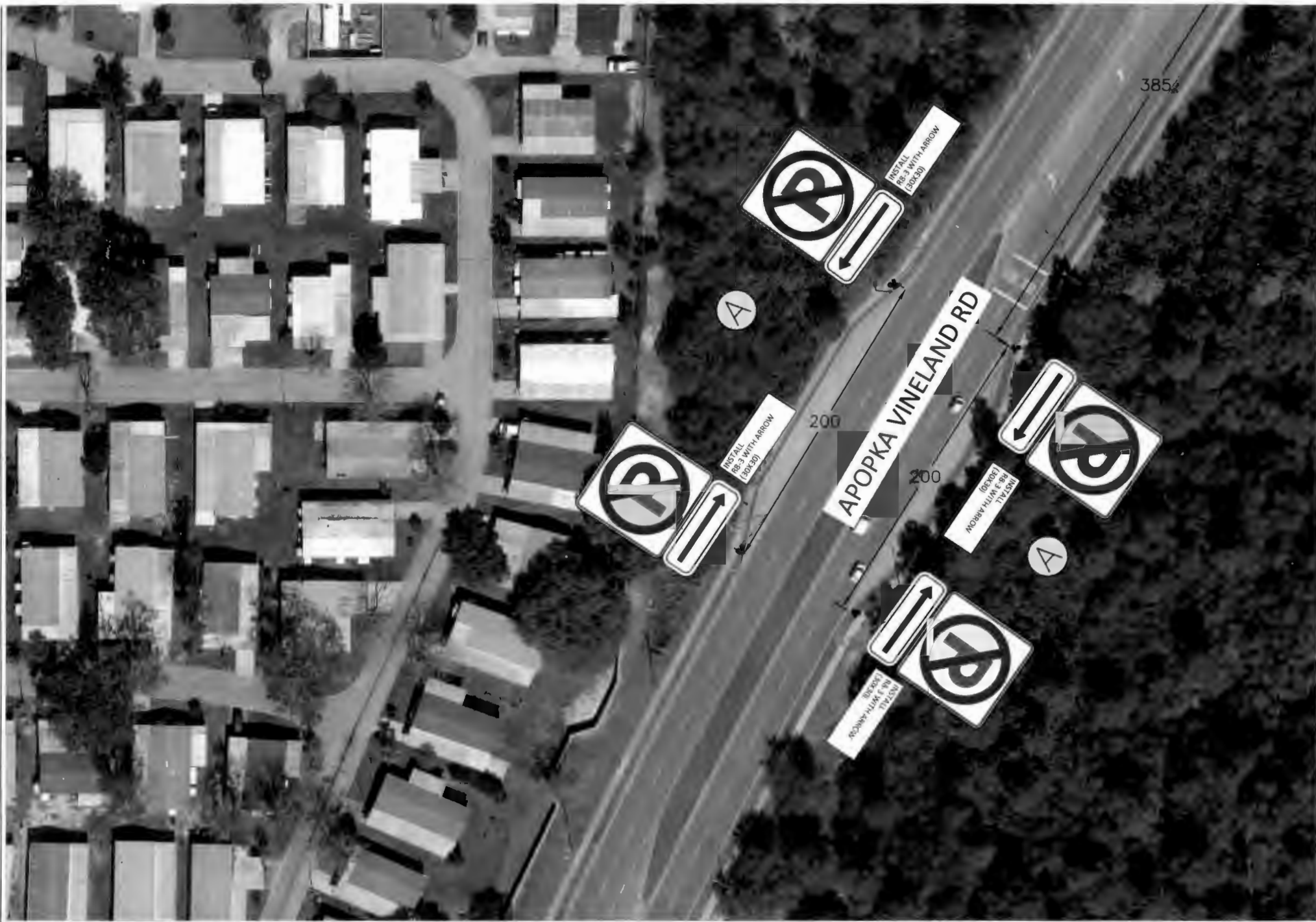
REVISIONS		
DATE	BY	DESCRIPTION

ORANGE COUNTY PUBLIC WORKS
 TRAFFIC ENGINEERING DIVISION
 4500 SOUTH JOHN YOUNG PARKWAY
 ORLANDO, FLORIDA 32839-6201
 (407) 836-7900

DRAWN BY: Joshua Gonzalez	DATE: 1/17/18
REVISED BY: Lauren Torres	DATE: 1/17/18
APPROVED BY: Humberto Costillero	DATE: 1/17/18

APOPKA VINELAND RD AT
 PROMENADER DR

DRAWING SCALE:
 HTS
 SHEET 1 OF 1



REVISIONS		
DATE	BY	DESCRIPTION

ORANGE COUNTY PUBLIC WORKS
TRAFFIC ENGINEERING DIVISION
 4200 SOUTH JOHN YOUNG PARKWAY
 ORLANDO, FLORIDA 32839-9205
 (407) 836-7908



DRAWN BY: Joshua González	DATE: 1/17/19
REVISED BY: Lauren Torres	DATE: 1/17/19
APPROVED BY: Humberto Castillero	DATE: 1/17/19