

Board of County Commissioners

**Request for Semi-Private Boat
Ramp Facility Permit
BR-16-08-001**

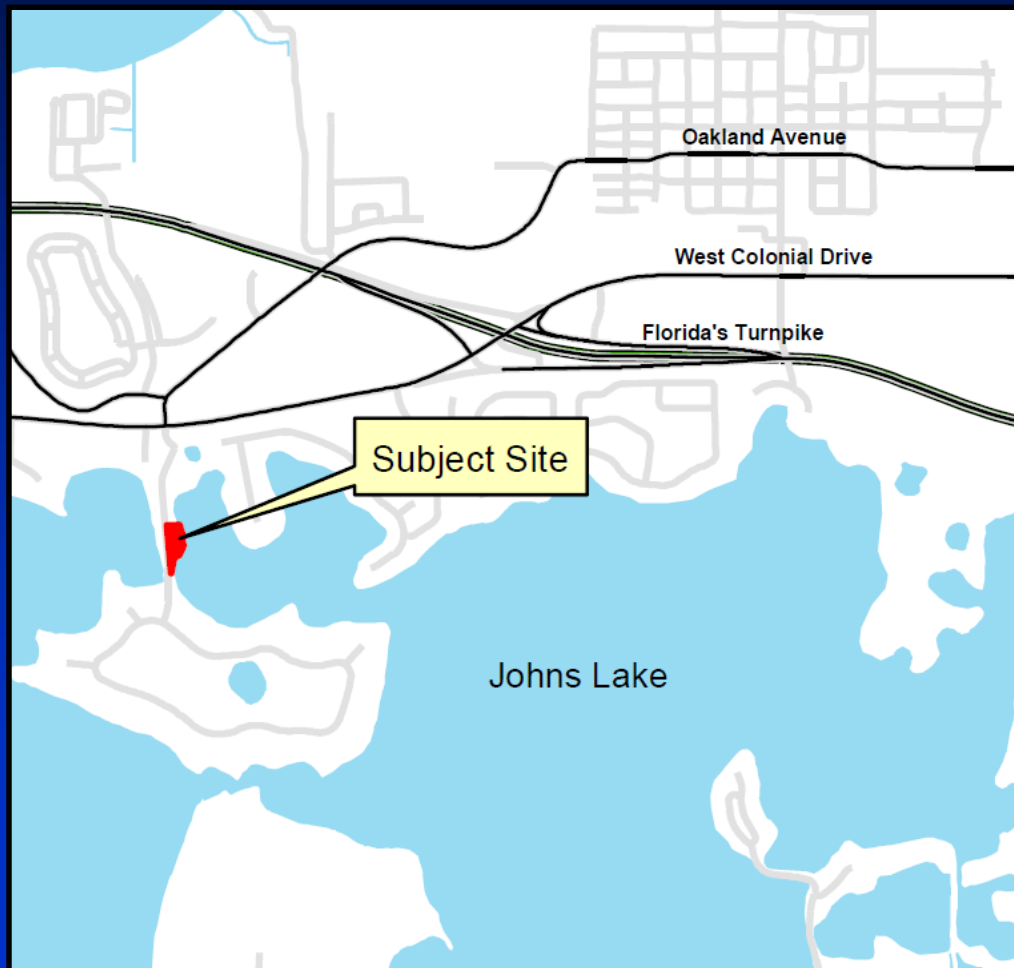
Deer Island HOA of Killarney, Inc.

December 18, 2018



Location Map

231 Deer Isle Drive



Parcel ID No.: 30-22-27-1985-00-001



Aerial Photo

231 Deer Isle Drive



Parcel ID No.: 30-22-27-1985-00-001

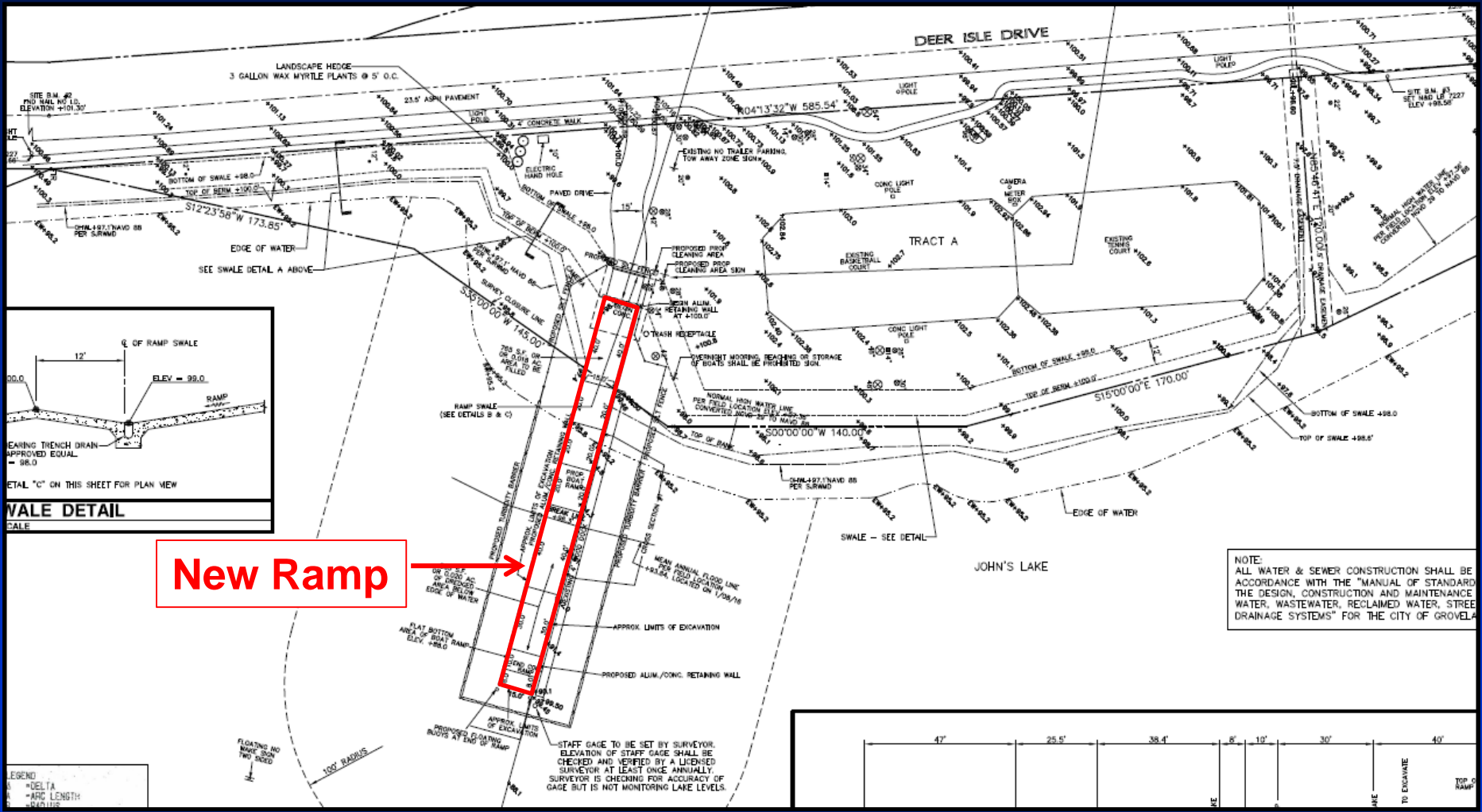


Current Conditions

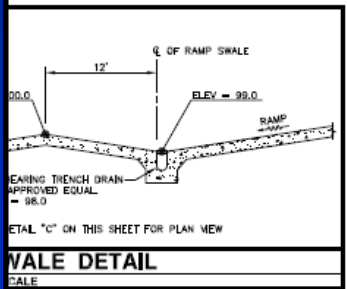




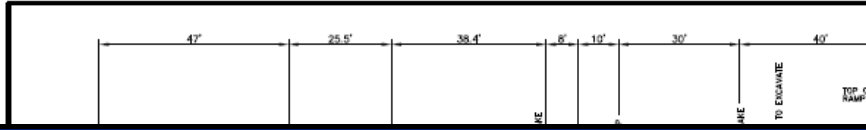
Proposed Site Plan



New Ramp →



LEGEND
Δ = DELTA
L = AREA LENGTH
R = RADIUS





Considerations

- The proposed project was reviewed in accordance with Chapter 15, Article XV and the review criteria and conditions of issuance therein.
- The existing ramp on this parcel was approved by the Board of County Commissioners on April 6, 1993.
- The conditions of approval from the 1993 permit will be carried over to the new permit.
- The new ramp will be constructed in the same location as the existing ramp and measures 15' wide by 188' long.
- All upland owners adjacent to Johns Lake were notified of the public hearing.



Action Requested

- **Approval of Semi-Private Boat Ramp Facility Permit (BR-16-08-001) for Deer Island Homeowners Association of Killarney, Inc., subject to the conditions listed in the staff report. District 1**