

Board of County Commissioners

Public Hearings

April 27, 2021



Willamar Country Estates Preliminary Subdivision Plan

Case: PSP-20-02-054

Project Name: Willamar Country Estates PSP

Applicant: Stephen Allen, Civil Corp Engineering, Inc.

District: 1

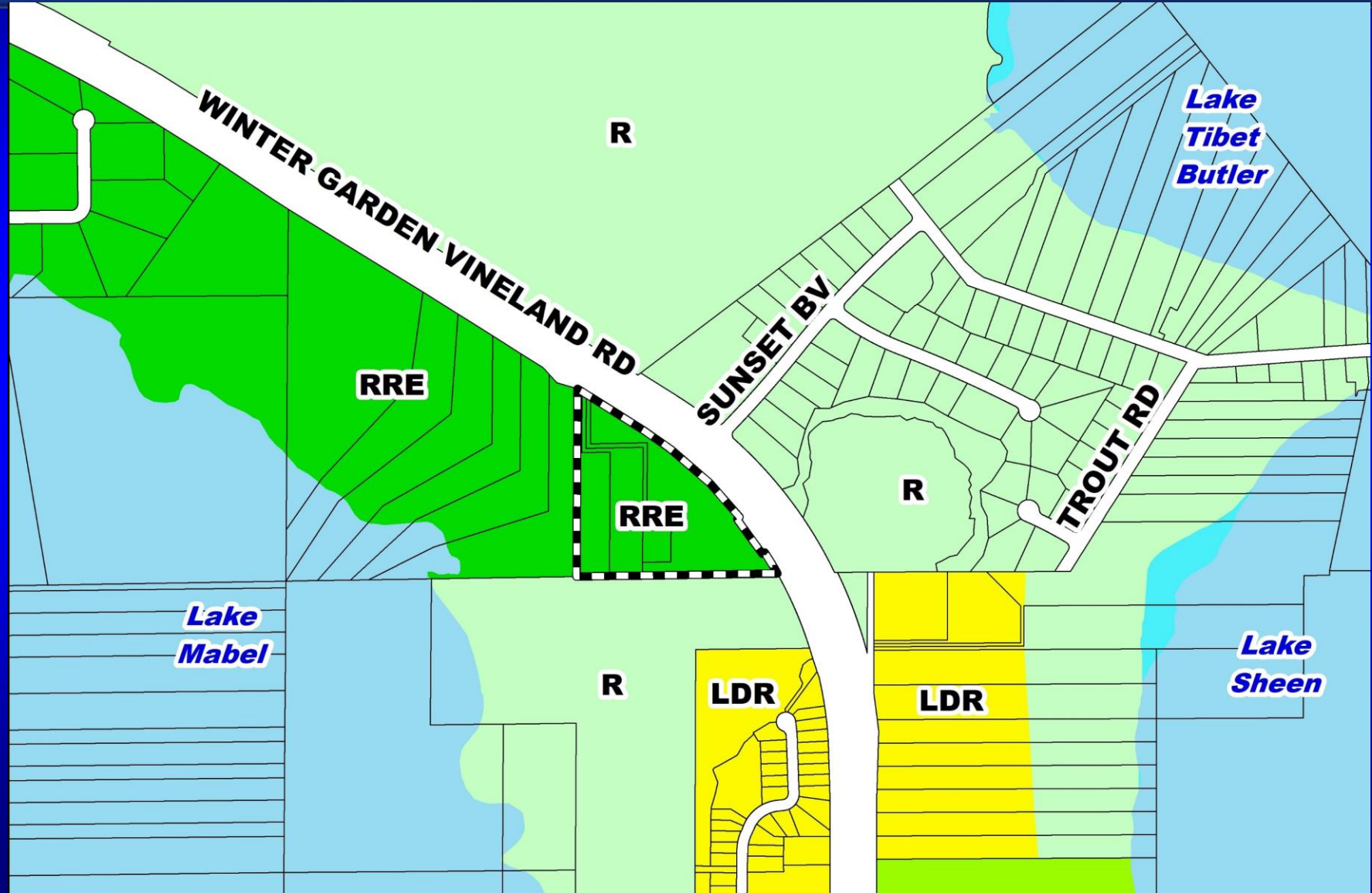
Acreage: 10.62 gross acres

Location: Generally located southeast of Reams Road and west of Winter Garden Vineland Road

Request: To subdivide 10.62 acres in order to construct seven (7) single-family residential dwelling units.

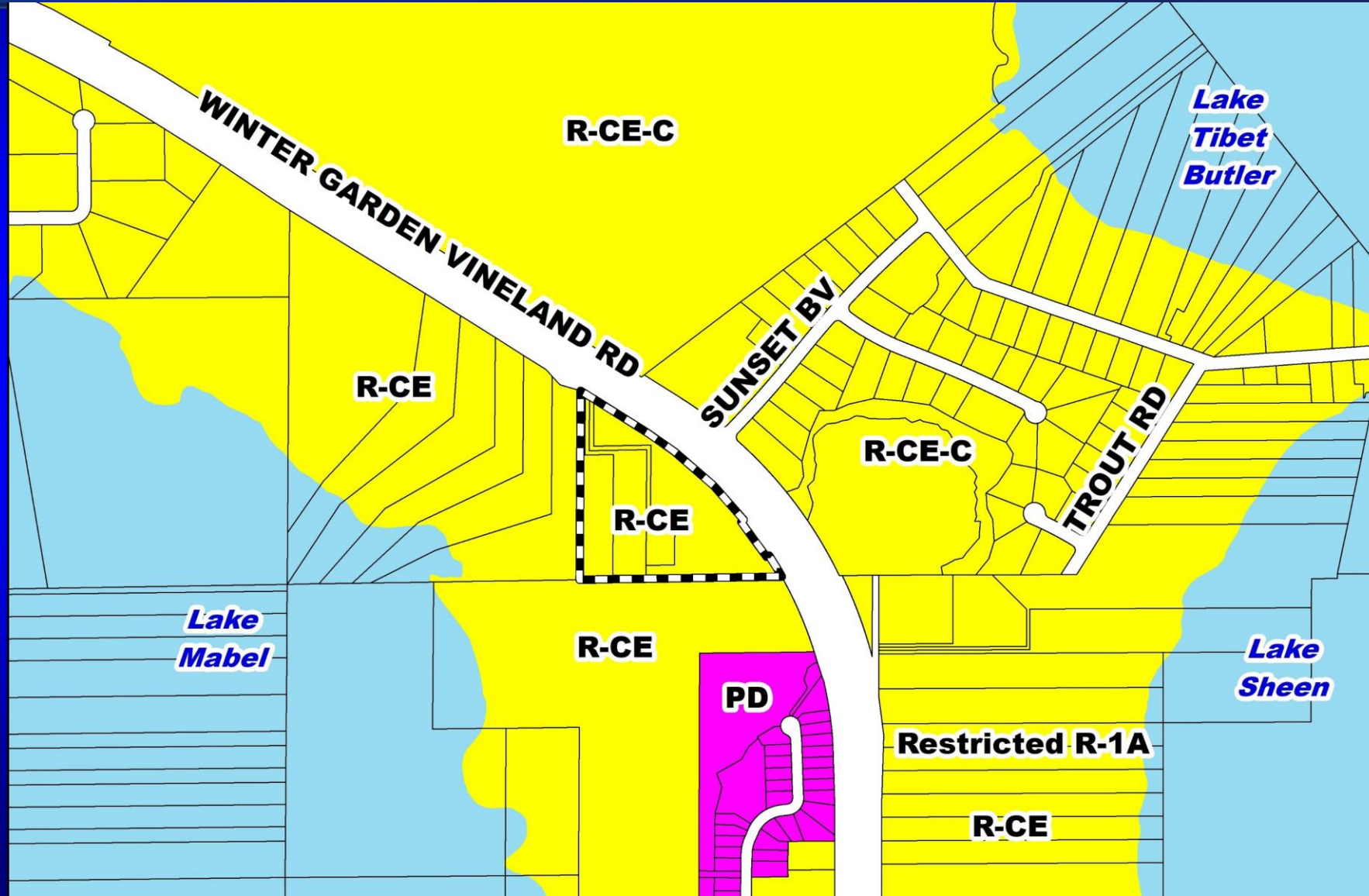


Willamar Country Estates Preliminary Subdivision Plan Future Land Use Map





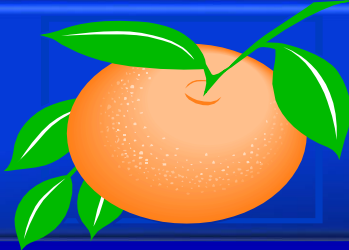
Willamar Country Estates Preliminary Subdivision Plan Zoning Map





Willamar Country Estates Preliminary Subdivision Plan Aerial Map

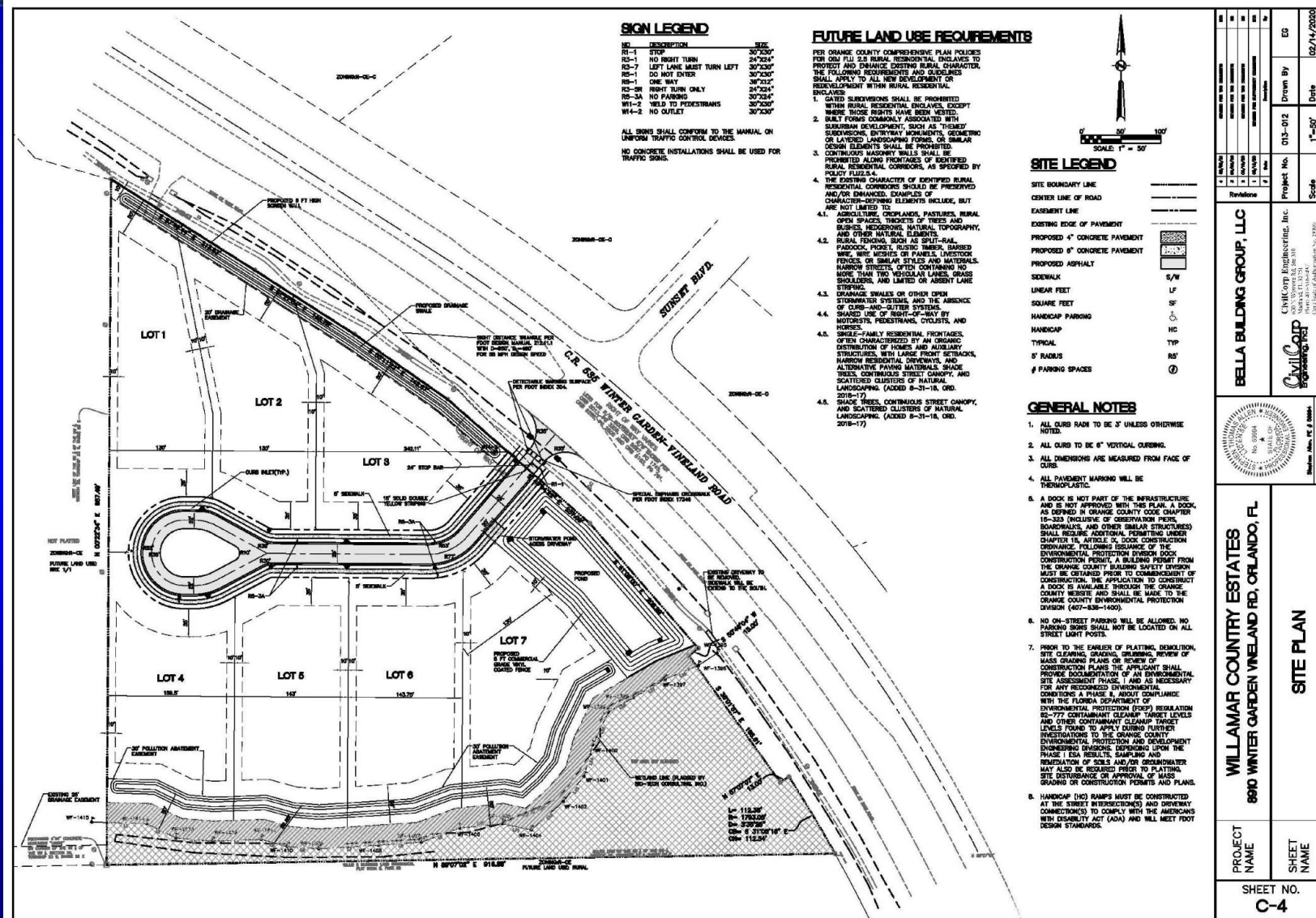




Willamar Country Estates

Preliminary Subdivision Plan

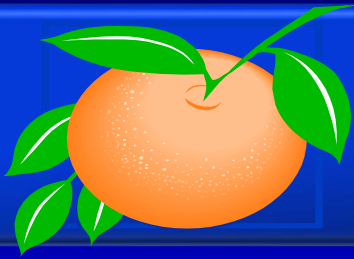
Overall Preliminary Subdivision Plan





New Condition # 28

The development shall obtain water, wastewater and reclaimed water service from Orange County Utilities subject to County rate resolutions and ordinances. The developer shall design a public wastewater collection system serving every parcel with the final construction plans, including a public wastewater pump station parcel to be dedicated to Orange County with the plat.



Action Requested

Make a finding of consistency with the Comprehensive Plan and approve the Willamar Country Estates PSP dated “Received March 4, 2021”, subject to the conditions listed under the DRC Recommendation in the Staff Report, as amended.

District 1

Board of County Commissioners

Public Hearings

April 27, 2021