

SOUTHCHASE PD

- PROJECT TEAM
- SITE OVERVIEW
- COMPARISON – APPROVED VS. PROPOSED DEVELOPMENT
- ADJACENT SINGLE FAMILY RESIDENTIAL - SAFEGUARDS
- SUMMARY
- Q & A



Engineering the Future

PROJECT TEAM

- **DEVELOPER REPRESENTATIVE**

Matt Gourlay, Development Manager, Lecesse Development

- **LEGAL COUNSEL**

Scott Glass, Partner, Shutts & Bowen, LLP

- **CIVIL ENGINEER**

Sam Sebaali, P.E., President, Florida Engineering Group, Inc.



Engineering the Future

SITE OVERVIEW

- Southchase PD (DRI) approved in 1987
- Parcel 44 (26.8 Acres) is currently entitled for 220,136 S.F. of Commercial Development
- Parcel 44 is vested for concurrency
 - Concurrency Vested Rights Certificate CVRC#92-074
 - Transportation Impact Fee Agreement dated August 1, 1988
- Parcel 44A (14.5 Acre Project Site) is entitled for 108,277 S.F. of Commercial Development
- The project site is part of an existing master drainage system
- All utilities are available to the site
- Project site is within ½ Mile of Meadow Woods Sunrail Station (about ¼ mile)



Engineering the Future

APPROVED VS. PROPOSED

APPROVED USE

Commercial – 108,277 S.F.

PROPOSED USE

MF – 280 Units (Equiv. 32,340 S.F.)

VESTED TRIPS (PM PEAK)

413

PROPOSED USE

123 (70% Reduction)

APPROVED OPEN SPACE

20%

PROPOSED OPEN SPACE

25% (25% Increase in Open Space)



Engineering the Future

APPROVED VS. PROPOSED – Cont'd.

APPROVED LOT COVERAGE

80% Max.

PROPOSED LOT COVERAGE

75% Max. (6% Reduction)

APPROVED SETBACKS

25 Ft. Front/10 Ft. Side/10 Ft. Rear

PROPOSED SETBACKS

25 Ft. Front/25 Ft. Side/ 25 Ft. Rear

APPROVED HEIGHT

50 Ft./5 Stories

25 Ft. of SFR

PROPOSED HEIGHT

50 Ft./4 Stories

165 Ft. from SFR w/Enhanced Buffer



Engineering the Future

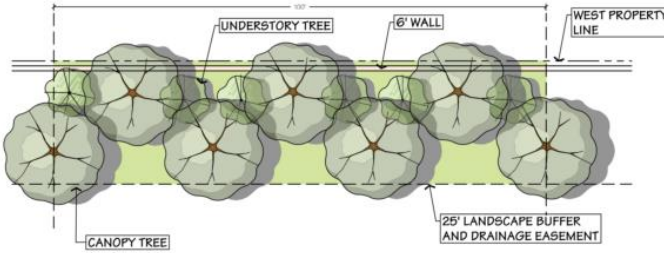
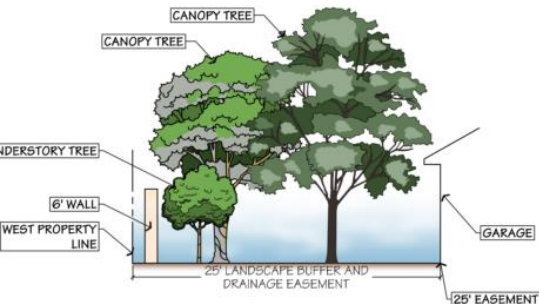
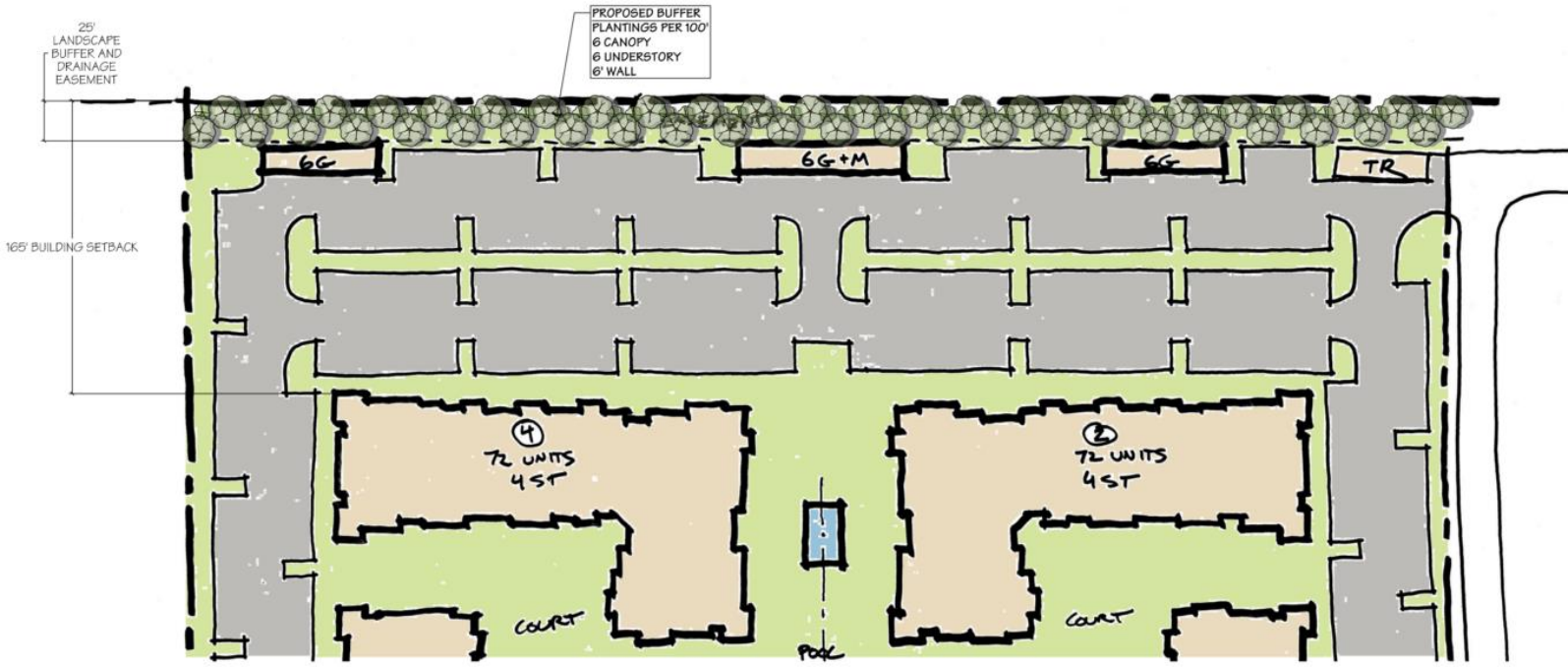
RESIDENTIAL SAFEGUARDS

- 6 Ft. Tall Wall along Western Boundary
- Enhanced Landscaping – 2 Rows of Canopy and Understory Trees Planted at 25 Ft. on Center (6 canopy trees and 6 understory trees per 100 L.F.)
- Multi-Family Buildings Located more than 150 Feet away from Western Property Line



Engineering the Future

BUFFER EXHIBIT

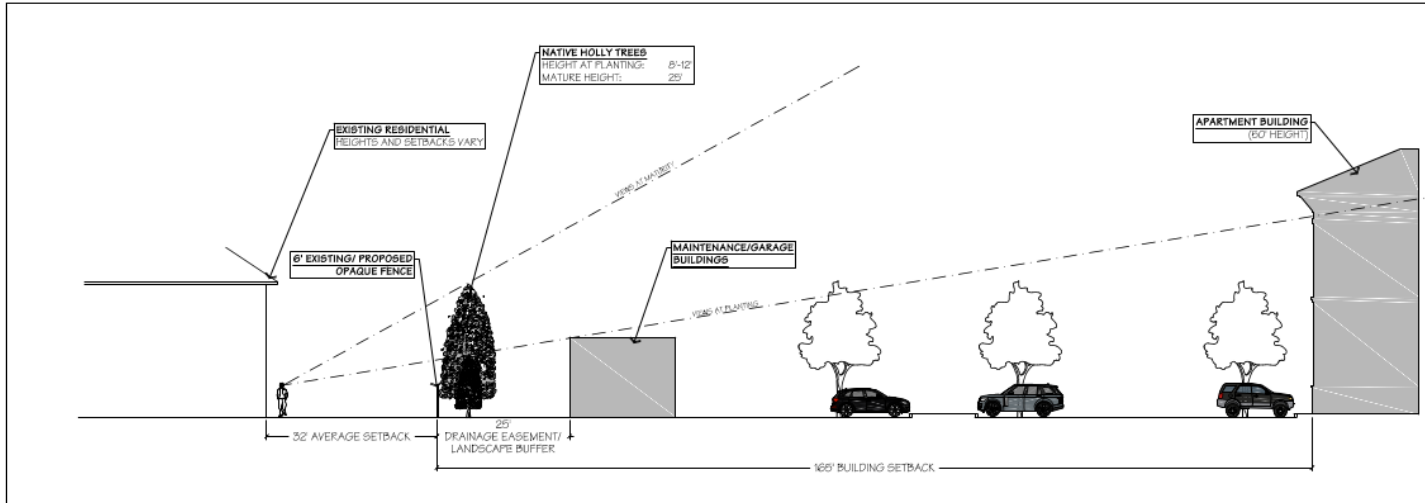


CONCEPT PLANT SCHEDULE

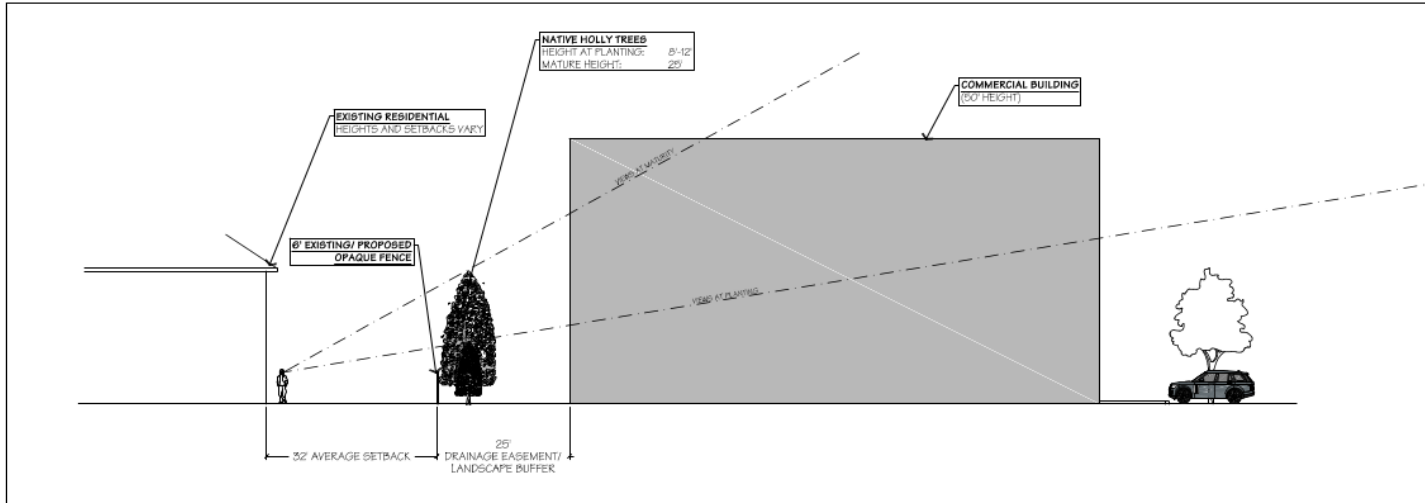
	CANOPY TREE Magnolia grandiflora O.D. Burchard / Southern Magnolia Pinus strobus / Slash Pine Platanus occidentalis / American Sycamore Quercus virginiana / Southern Live Oak	46
	UNDERSTORY TREE Banksia integrifolia / Japanese Rustytree Tree Ilex / Nellie R. Dismore / Nellie Dismore Holly Laguncularia indica / Crape Myrtle Liquidambar japonicum / Japanese Fringe	47

MEADOW WOODS APARTMENTS
ENHANCED RESIDENTIAL BUFFER

LINE OF SIGHT EXHIBIT



PROPOSED APARTMENT DEVELOPMENT SITE SECTION
 BUILDING HEIGHT: 50'
 BUILDING SETBACK: 165'



POTENTIAL COMMERCIAL DEVELOPMENT SITE SECTION
 BUILDING HEIGHT: 50'
 BUILDING SETBACK: 25'

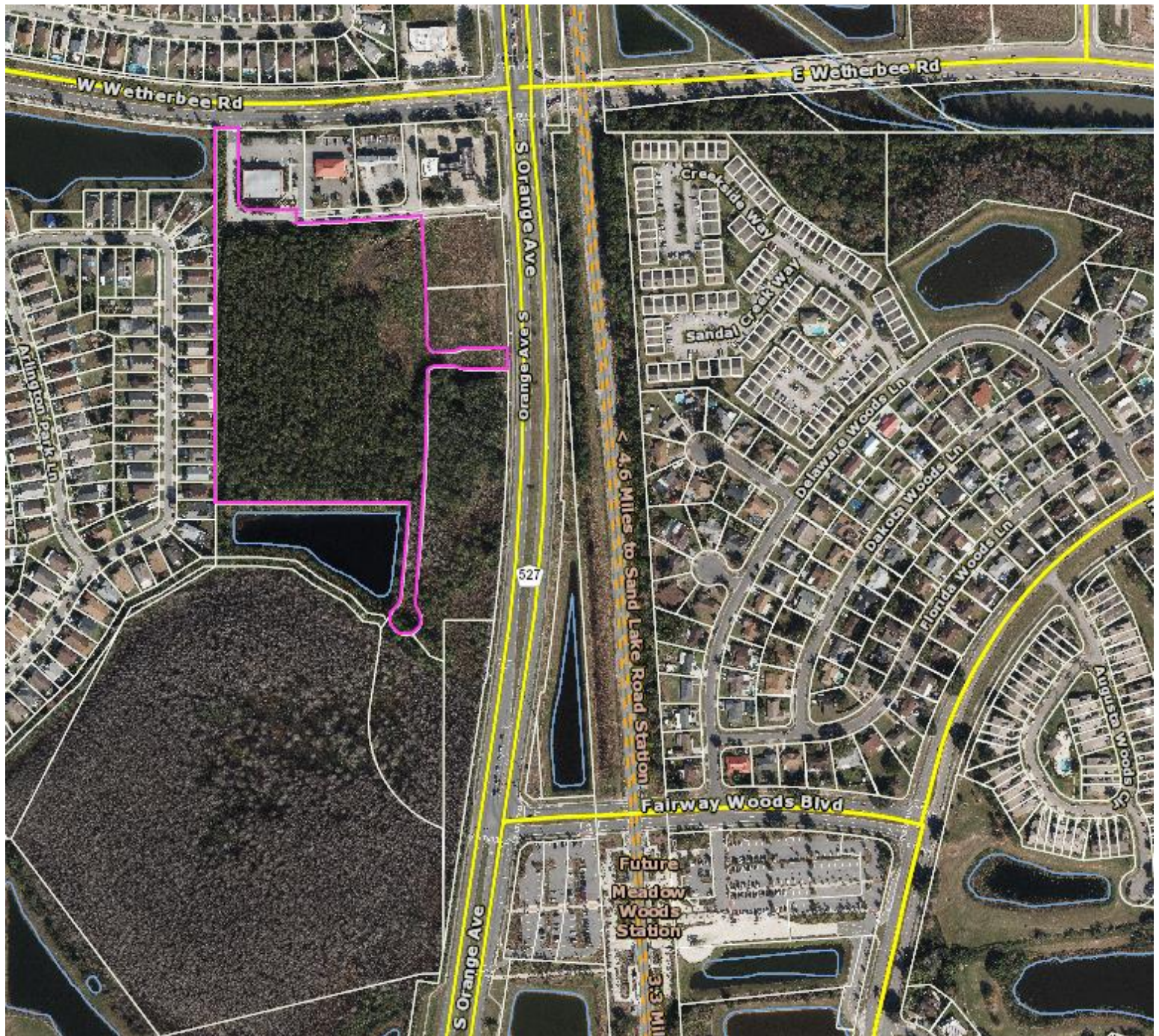
SUMMARY

- Site currently entitled for higher intensity development than proposed
- Proposed project results in less trips than currently entitled and vested
- Proposed project results in more open space than current approval
- Proposed project provides larger building separation from SFR
- Proposed project results in enhanced buffer adjacent to SFR
- Proposed project does not alter the master drainage system
- Proposed project does not impact any wetlands
- All utility infrastructure is available to the site
- The project site is within a TOD Area about ¼ mile from Sunrail Station
- The project provides much needed residential dwelling units.
- The site is within a Proposed Targeted Sector per Orange County Vision 2050 (Higher Density for Infill Development)

Q & A



Engineering the Future



W Wetherbee Rd

E Wetherbee Rd

S Orange Ave

S Orange Ave

527

Future Meadow Woods Station

Fairway Woods Blvd

3.3 MI

4.6 Miles to Sand Lake Road Station

Arlington Park Ln

Creakle Way

Sandal Creek Way

Delaware Woods Ln

Dakota Woods Ln

Florida Woods Ln

Juniper Woods Ct

undeveloped site were noted as especially viable for redevelopment through this analysis. These parcels are illustrated on the map below.

MEADOW WOODS GOLF COURSE

The Meadow Woods Golf Course is located directly across Landstar Boulevard from the station. It is currently vacant and offers a unique opportunity for infill redevelopment to support neighborhood needs and the TOD. New development within the golf course should add to the value and appeal of the existing homes that surround it. New roadway or pedestrian connections could be created through the redevelopment to allow for better access to the station from the homes to the southeast of the golf course. Drainage and stormwater, and utility needs would need to be considered as part of any new development.

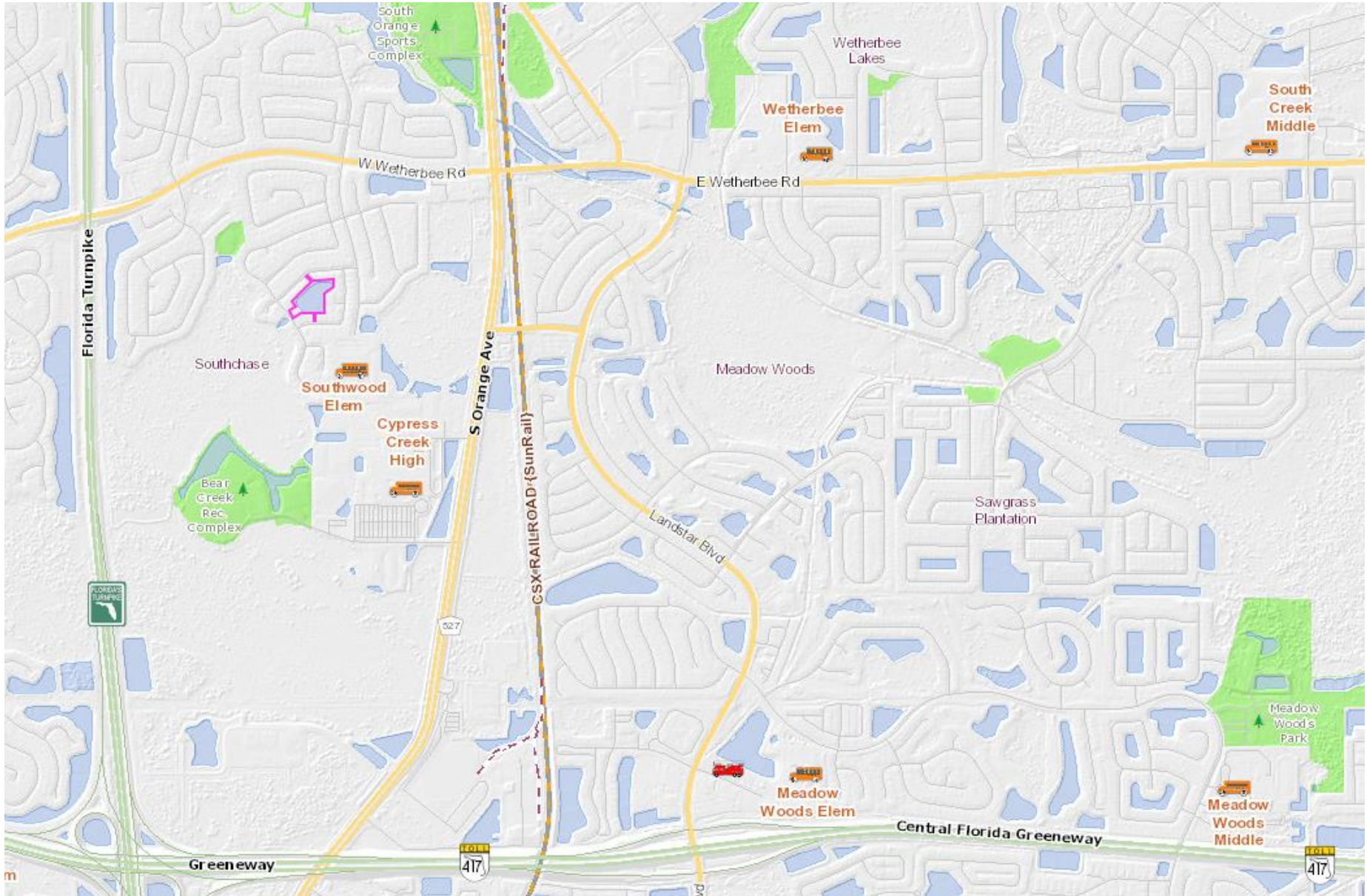
SUNRAIL STATION AREA AND VACANT LAND

The SunRail station location is currently surrounded by vacant land. Further to the west and across the tracks, there is also a large swath of undeveloped land that could support development. Both of these locations offer the potential for higher density, transit supportive development that can act as a gateway to the station, while maintaining the existing neighborhood character of the adjacent community. Stormwater and drainage issues will likely need to be considered due to the wet nature of the area.

NORTHERN UNDEVELOPED SITE

A large undeveloped site is located in the northwest portion of the 10-minute walk area across Orange Avenue. This area is ripe for redevelopment, with higher densities closer to Orange Avenue that step back down to maintain the character of the neighborhoods to the west. This site's potential also depends on adequate safe and comfortable pedestrian and bicycle linkages and crossing of Orange Avenue to access the SunRail station.







PARCEL	ACRES	LAND USE
1	224.52	Low Density Residential
1A	8.30	Park
1B	0.82	Mitigation
1C	2.10	Mitigation
1D	0.15	Mitigation
1E	0.90	Mitigation
2	15.00	High Density Residential
2A	7.70	Mixed Use
3	22.12	Commercial
4	29.20	Commercial
5	49.80	High Density Residential
6	100.70	Low Density Residential
6A	19.30	Church
6B	7.10	Park
6C	0.70	Mitigation
6D	12.60	Mitigation
8	32.90	Commercial
9	8.60	Mixed Use
10	20.60	High Density Residential
11	13.90	Mixed Use
11A	19.30	Commercial
11B	4.40	Church
12	29.00	Low Density Residential
13	8.90	Commercial
13A	5.30	Commercial
14	0.90	Low Density Residential
14A	1.90	Mitigation
15	67.70	Low Density Residential
15A	0.50	Mitigation
16	352.40	Low Density Residential
16A	6.00	Mitigation
16B	3.30	Mitigation
20B	16.40	High Density Residential
20C	4.40	Industrial/Stormwater
24B	13.20	High Density Residential
24B	1.00	Commercial
25B	6.00	Mitigation
26	34.30	Industrial/Stormwater
29	31.40	Low Density Residential
29A	17.30	Industrial Distribution
29B	8.40	High Density Residential
29C	44.80	Low Density Residential
32	37.70	Industrial/Stormwater
33	2.70	Industrial Park/Communication
34	8.90	Commercial
34A	19.30	High Density Residential
34B	43.10	Low Density Residential
35	110.90	Industrial/Well Field
36	0.60	Industrial Distribution
37	73.00	Industrial Distribution
38	9.70	Industrial/Well Field
39	12.70	Industrial Distribution
39A	11.90	Industrial Distribution
40	174.50	Low Density Residential
40A	3.00	Park
40B	6.00	Low Density Residential
41	16.60	Mitigation
41A	3.80	Mitigation
41B	4.40	Mitigation
41C	2.30	Mitigation
41D	1.90	Mitigation
43A	15.80	School
43B	36.80	Park
43C	42.70	School
44	13.30	Commercial
44A	14.80	High Density Residential
45	223.80	Low Density Residential
45A	1.30	Commercial
45B	4.60	Park
45C	6.00	Church
47	28.40	Park

PARCEL 44A SITE DATA

EXISTING ZONING: PD (COMMERCIAL)
 PROPOSED ZONING: PD (HIGH DENSITY RESIDENTIAL)
 PARCEL AREA: 14.80 ACRES
 PROPOSED DEVELOPABLE AREA: 11,333 AC FT
 PROPOSED DEVELOPMENT: 280 DU MULTI-FAMILY APARTMENT COMPLEX
 MAXIMUM DENSITY: 20 DU/AC
 PROPOSED DENSITY: 25.15 DU/AC
 MINIMUM LOT SIZE: 6,000 SF
 MINIMUM LIVING AREA: 2000 SF
 MAXIMUM BUILDING HEIGHT: 50 OR 4 STORES (**)
 OPEN SPACE REQUIRED: 25%
 SETBACKS (**)
 FRONT: 20'
 REAR: 20'
 ADJACENT TO SINGLE-FAMILY: -150' FROM SINGLE FAMILY RESIDENTIAL PROPERTY FOR BUILDINGS 50 OR 4 STORES IN HEIGHT. SEE NOTE (***) BELOW.
 SCHOOL AGE POPULATION: 280(238) - 80 STUDENTS
 (***) INDICATES 85 LOT AREA PLUS 1,583 AC PROPORTIONATE SHARE OF SHARED STORMWATER MANAGEMENT AREA.
 (***) A SINGLE STORY 10' HEIGHT LIMITATION SHALL APPLY WHERE ADJACENT TO AND WITHIN 100' OF SINGLE-FAMILY ZONED PROPERTY.
 (***) DETACHED-GARAGE SETBACKS SHALL COMPLY WITH SECTION 38-5428 (METS304).

SEE SOUTHCHASE SOUTH-MEADOWS PD

LEGEND

- WETLANDS
- COMMUNITY PARKS
- SCHOOLS/INSTITUTIONAL
- CHURCH
- COMMUNICATIONS TOWER
- DEANNEXATION
- COMMERCIAL
- OFFICE
- INDUSTRIAL (STORMWATER)
- INDUSTRIAL PARK
- INDUSTRIAL DISTRIBUTION
- RESIDENTIAL / LOW (40U/AC)
- RESIDENTIAL / HIGH (200U/AC)
- MITIGATION AREA
- MIXED USE

FEG FLORIDA ENGINEERING GROUP
 5127 E. Orange Avenue, Suite 200
 Orlando, FL 32809
 Phone: 407-895-0324
 Fax: 407-895-0325
 www.feginc.com

NOTE: REVISIONS MADE BY FEG ON NOVEMBER 8, 2021 TO THE PROJECT MASTER DEVELOPMENT PLAN / LAND USE PLAN

Notes:

- Churches are a permitted use in Low Density Residential but use designation residential is not to be observed at the time necessary Submittal Plan submit and staff review.
- Church location shall be determined at the time necessary Submittal Plan submit and staff review.

REGULATORY NOTES:
 THE HISTORICAL ENVIRONMENTAL PERMIT CD060-076 IS ASSOCIATED WITH THIS PLAN. THE PLAN SHALL COMPLY WITH ALL HISTORICAL PERMIT CONDITIONS.
 NOTE: IN ACCORDANCE WITH SECTION 38-1227, ANY VARIATIONS FROM COUNTY CODE MINIMUM STANDARDS REPRESENTED ON THIS PLAN THAT HAVE NOT BEEN EXPRESSLY APPROVED BY THE REGULAR BOARD.

PROPOSED LAND USE PLAN MODIFICATION - TRIP CONVERSION
 WE ARE PROPOSING TO MODIFY THE SOUTHCHASE LAND USE PLAN TO CONVERT 32,340 SF OF COMMERCIAL TO 200 MID-RISE MULTI-FAMILY HIGH DENSITY RESIDENTIAL DWELLING UNITS ON PARCEL 44A (PID 23-24-29-8238-00-050 AND 23-24-29-8238-02-000) BASED ON TRIP EQUIVALENCES: 1,000 SQ. FT. OF RETAIL COMMERCIAL = 6.6991 MID-RISE MULTI-FAMILY DWELLING UNITS
 1 DU OF MID-RISE MULTI-FAMILY = 115 S.F. OF RETAIL COMMERCIAL DEVELOPMENT

NORTH

0 100 200

SOUTHCHASE

MASTER DEVELOPMENT PLAN / LAND USE PLAN

ENGINEERS / PLANNERS

B&S ENGINEERING CONSULTANTS, LLC

LEGAL CONSULTANTS

Lowndes, Drosdick, Doster, Kantor, and Reed

PREPARED FOR:

MEADOW WOODS ACQUISITION LLC - CDR-21-11-337 - PID 23-24-29-8238-00-050, 23-24-29-8238-02-000

11/05/2021

SHEET 2 OF 5

