

SUNBRIDGE PARKWAY PRELIMINARY DESIGN STUDY

Board of County Commissioners Public Hearing

March 20, 2018



Presentation Overview

- **Study Overview**
- **Existing Conditions**
- **Project Development Plan**
- **Public Involvement**



Presentation Overview






- **Study Overview**
- Existing Conditions
- Project Development Plan
- Public Involvement



Study Overview

- **Sunbridge Parkway PDS**
 - **Study Kick Off:** May 2017
 - **Anticipated Completion:** May 2018
 - **Corridor Length:** Approximately 6.1 Miles
 - **Limits:** Aerospace Parkway/Dowden Road to the Orange/Osceola County Line
 - **Goal:** Identify Context Sensitive & Cost Feasible Improvements
 - Document Project Need
 - Balance the Needs of All Users
 - Safety, Mobility, and Comfort



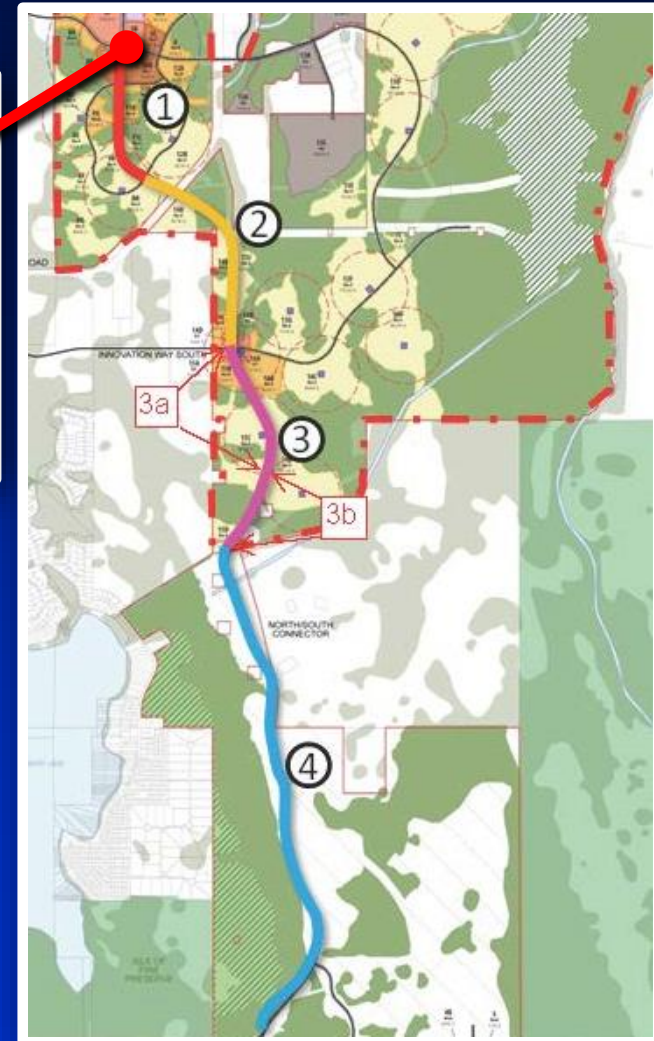
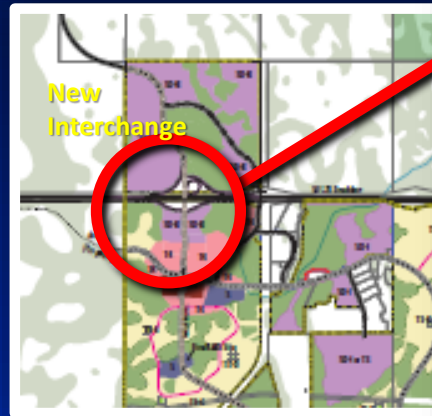
-  Automobiles
-  Pedestrians
-  Cyclists
-  Transit
-  Freight



Study Overview

Associated Projects

- New Interchange on State Road 528
- Segment 1 Sunbridge Parkway Road Design
- Sunbridge Neighborhoods Preliminary Development Plan
- Camino Reale – Regulating Plan Under Review

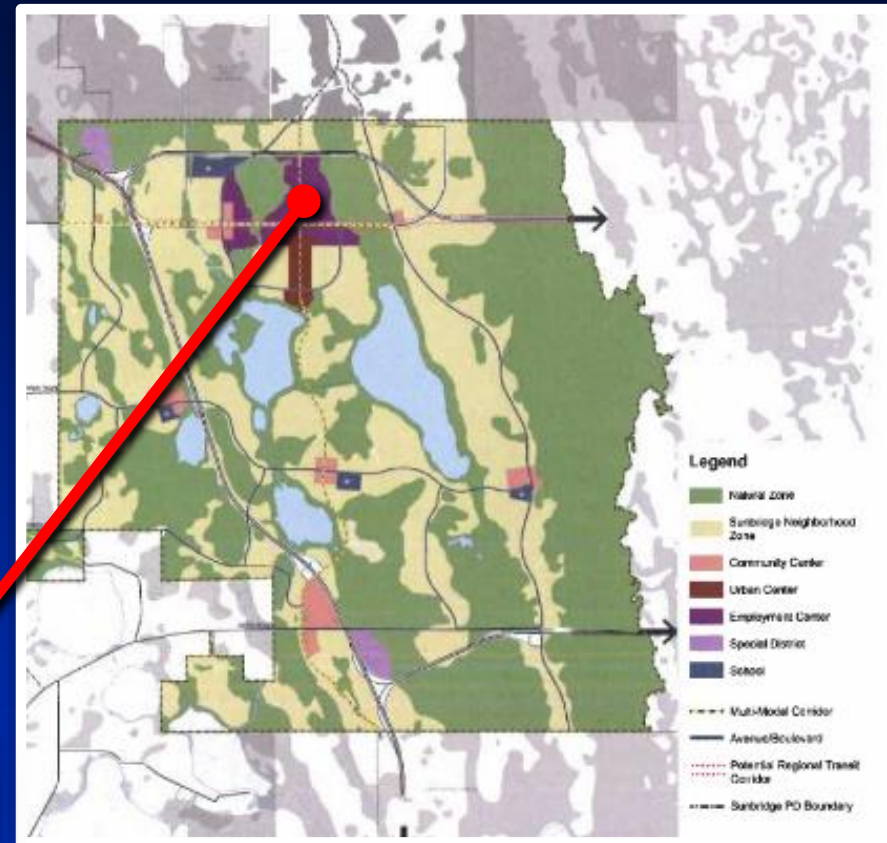
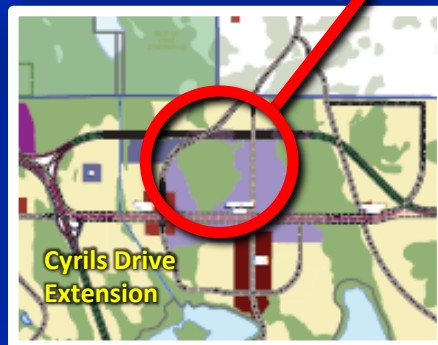




Study Overview

■ Associated Projects

- Sunbridge Parkway
(North East District)
- 19,000 Acres in Osceola County
- Future Connection to Cyrils Drive Extension and Access to Osceola Parkway Extension





Presentation Overview

- Study Overview
- Existing Conditions
- Project Development Plan
- Public Involvement



Existing Conditions

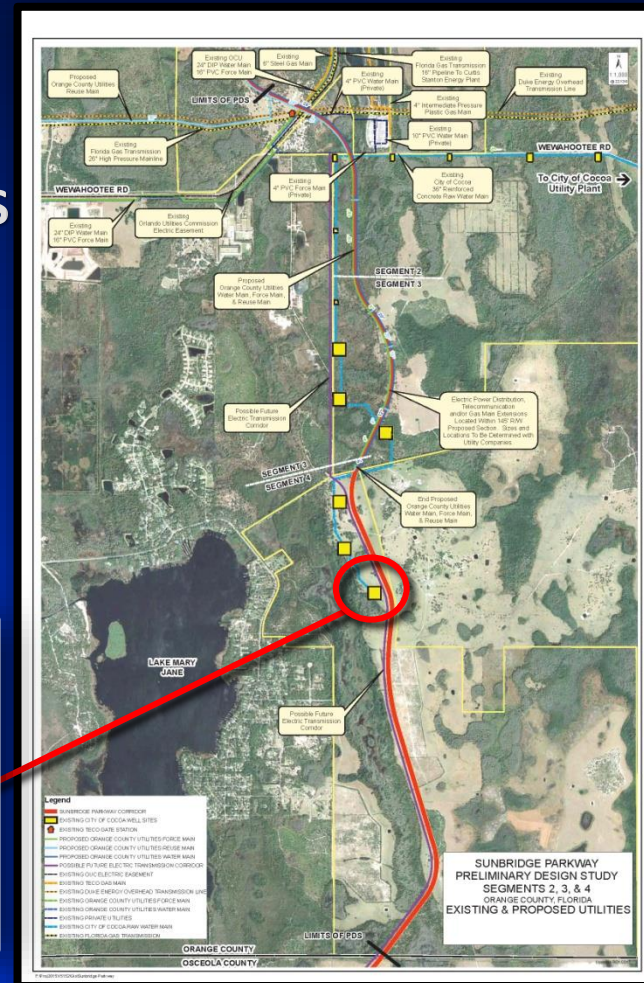
▪ Deseret Ranch

- 60 Year Old Cattle Ranch/Agricultural Operation
- One of the Largest Calf-Cow Operations in the US
- 45,000 Calf Producing Beef Cattle
- Predominately Pasture Lands or Undeveloped



▪ City of Cocoa

- Existing Water Supply Wells

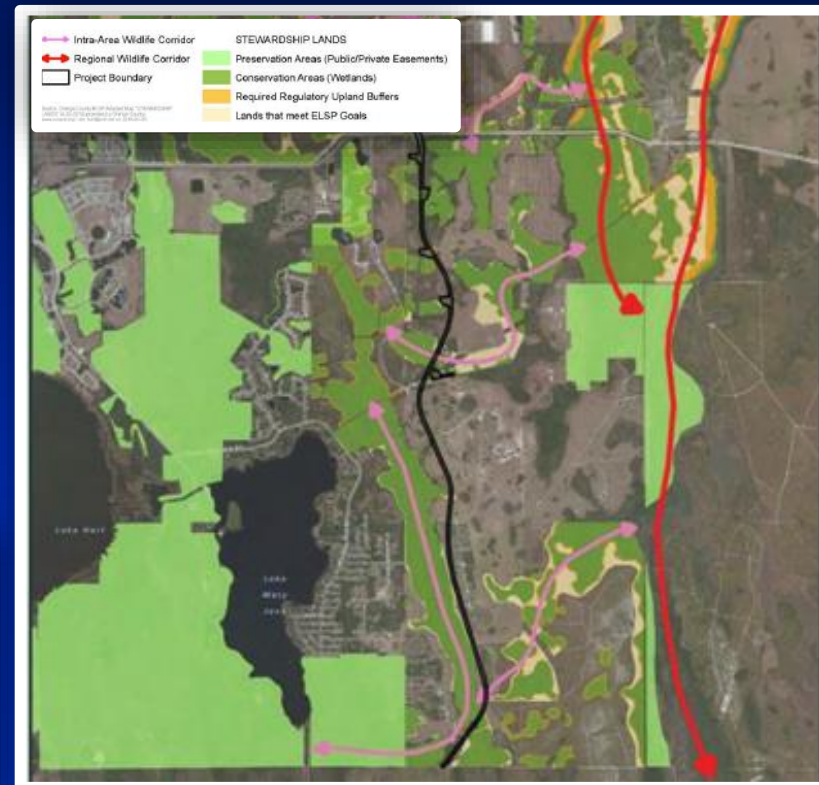




Existing Conditions

Environmental Considerations

- Environmental Land Stewardship Program Compliance
- Avoid/Minimize Wetland Impacts
- Maximize Use of Least Valuable Environmental Lands
- Protect Critical Wildlife Links





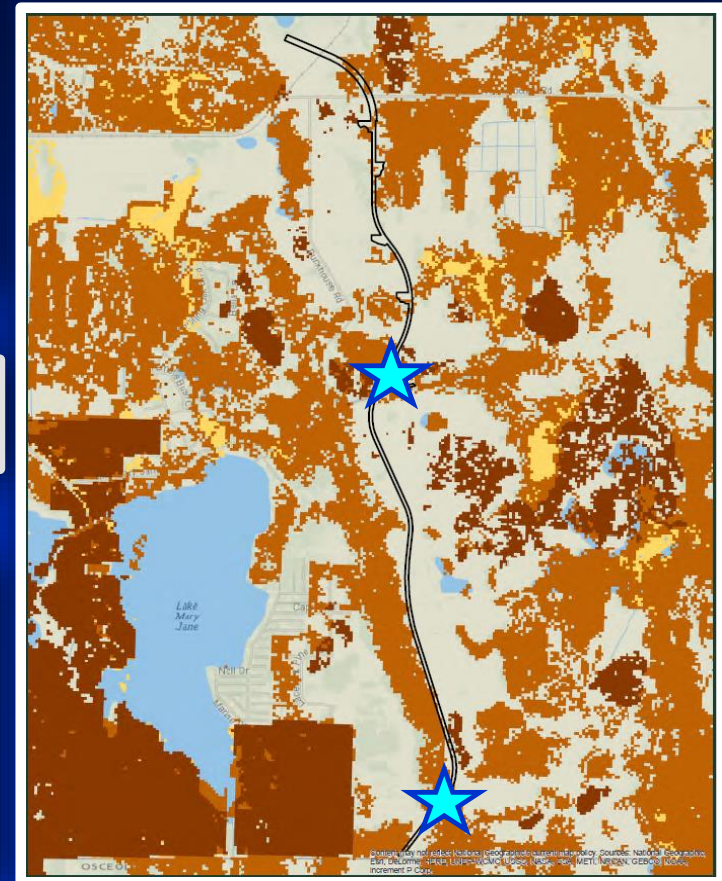
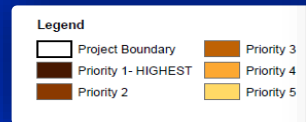
Existing Conditions

Environmental Considerations

—Species of Special Concern

- American Alligator
- Eastern Indigo Snake
- Florida pine snake
- Gopher Tortoise
- Florida Burrowing Owls
- Florida Sandhill Crane
- Southeastern American Kestrel
- Wood Storks
- Sherman's Fox Squirrels

—Potential for Two Wildlife Crossings ★





Presentation Overview

- Study Overview
- Existing Conditions
- **Project Development Plan**
- Public Involvement



Project Development Plan

■ 2025 - Opening Year Volume

–Dowden Road to Innovation Way South - 16,800 AADT

–Innovation Way South to County Line - 24,300 AADT

■ 2040 - Design Year Volume

–Dowden Road to Innovation Way South - 39,700 AADT

–Innovation Way South to County Line - 36,500 AADT

*(AADT) Average Annual Daily Traffic



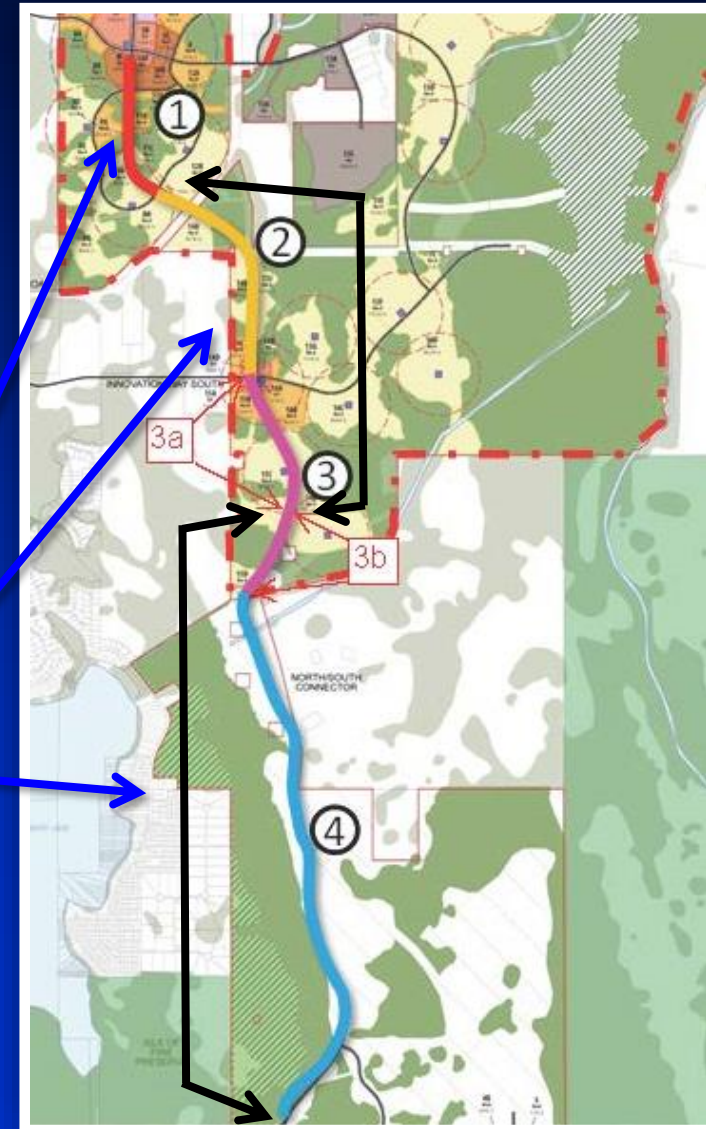


Project Development Plan

Initial Design and Construction by Tavistock

Segment	Design	Construct
Segment 1	4-lane Urban	4-lane Urban ●
Segment 2	2-lane Rural	2-lane Rural*
Segment 3a	2-lane Rural	2-lane Rural* ●
Segment 3b	2-lane Rural	2-lane Rural ●
Segment 4	2-lane Rural	2-lane Rural ●

*Segments 2 and 3a will ultimately be 4-lane Urban





Project Development Plan



■ Urban Road Sections

—From Aerospace Parkway to Disston Canal

- Curb and Gutter
- Stormwater Treatment in Ponds



Stormwater Pond



Roadside Swale

■ Rural Road Sections

—From Disston Canal to Orange/
Osceola County Line

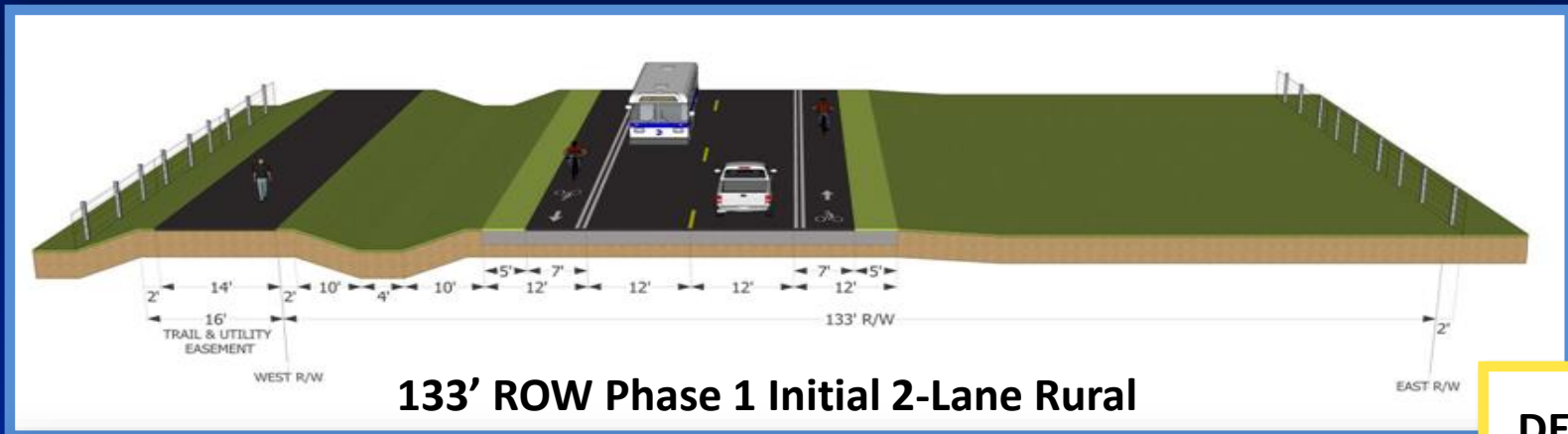
- Stormwater Treatment in Roadside Swales



Project Development Plan

▪ Roadway Sections

Segments 2, 3A and Part of 3B – South of Aerospace Pkwy. to Disston Canal



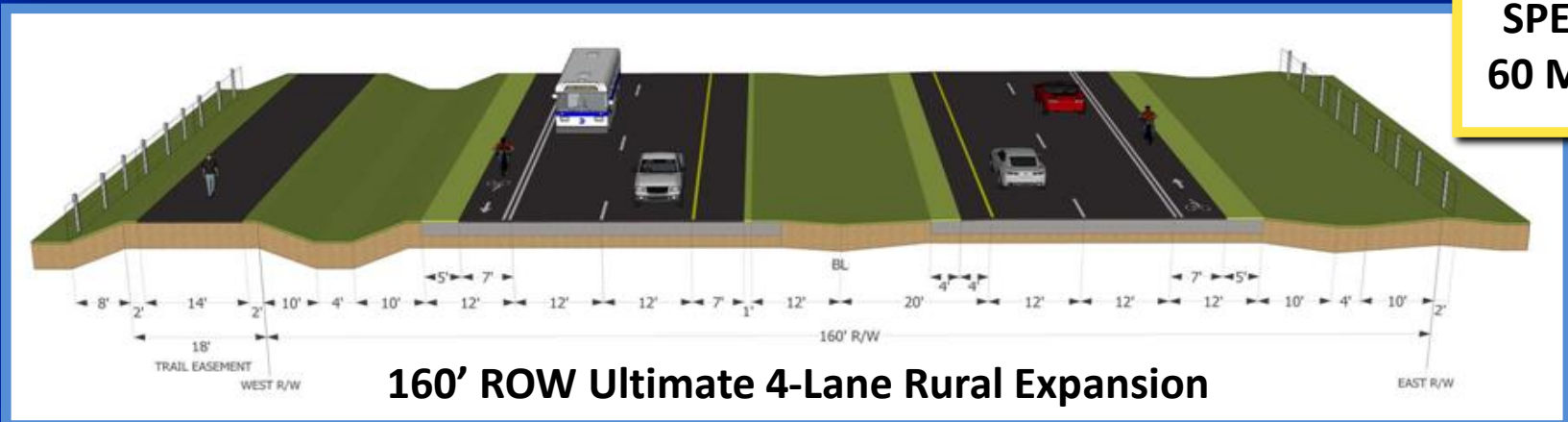
**DESIGN
SPEED
45 MPH**



Project Development Plan

▪ Roadway Sections

Segments 4 and Part of 3B - Disston Canal to the Orange Osceola County Line



**DESIGN
SPEED
60 MPH**



Project Development Plan

Estimated Constructed Roadway Cost

Public Private Partnership

Roadway Agreement Approved by the BCC

Impact Fee Credits

Aerospace Parkway/Dowden Road to Orange/Osceola County Line

Four Lane Ultimate Configuration

Does Not Include the Cost of Mitigation

Total Project Cost: \$50,000,000



Presentation Overview

- Study Overview
- Existing Conditions
- Project Development Plan
- **Public Involvement**



Public Involvement



**Study
Newsletter**



Study Website



**Public
Community
Meetings**



**LPA/BCC Public
Hearings**

All comments received throughout this Study will become part of the public record and included in the Final Study Report.

www.orangecountyfl.net/TrafficTransportation/SunbridgeParkway



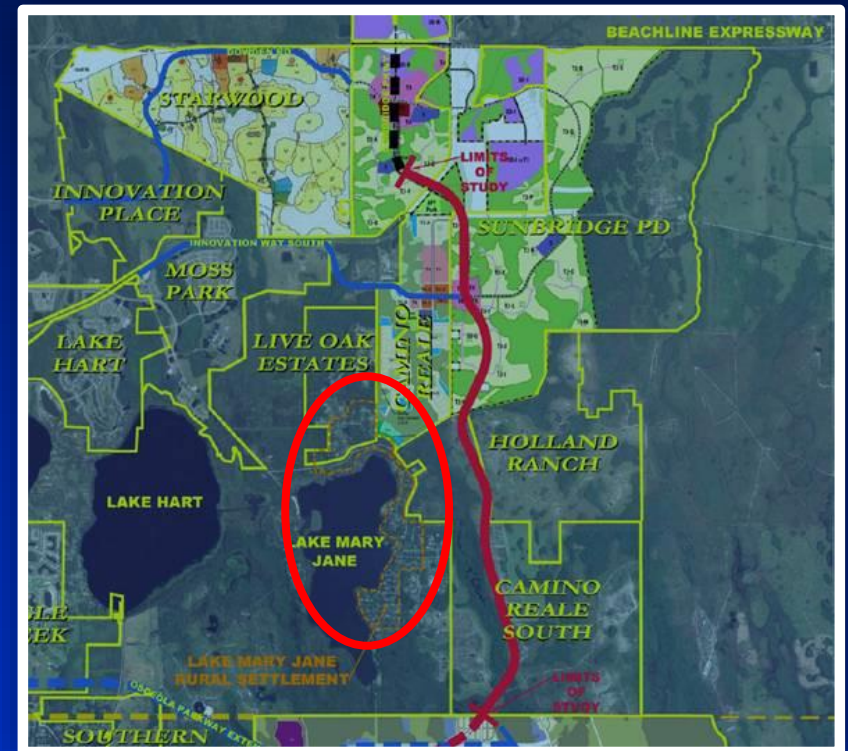
Public Involvement

▪ Lake Mary Jane Alliance Small Group Meeting

– **Key Take Away:** Focus on the Environment, Drainage and Preservation of Roberts Island Slough

▪ Community Meeting

– **Key Take Away:** Consider Timing of Phased Construction and Roadway Noise. Preservation of Roberts Island Slough Remains a Concern.





Public Involvement

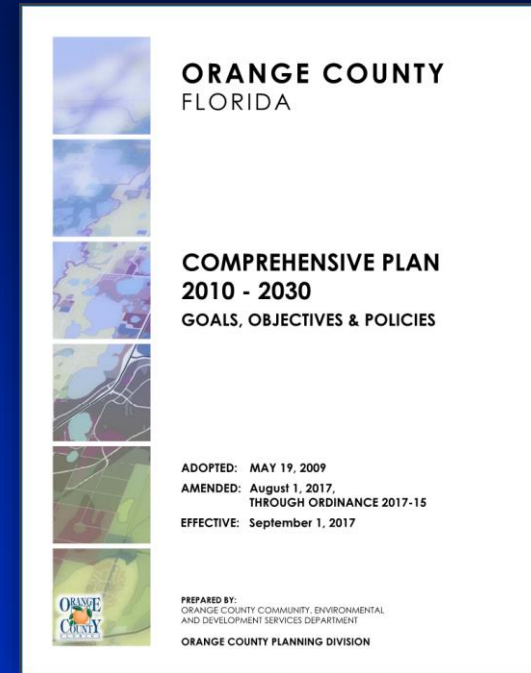
Public Involvement Activity	Target Dates
Community Meeting	11-30-2017
Local Planning Agency Work Session	12-21-2017
Local Planning Agency Public Hearing	02-15-2018
Board of County Commissioners Work Session	03-06-2018
Board of County Commissioners Public Hearing	03-20-18



Action Requested

Consistency with the Comprehensive Plan

- Implement Long Range Transportation Plan (Obj. T1.1)
- Implement the Long Range Transportation Plan using 4-Step process (T1.1.1)
- Reflect the context of communities and the environment (T1.1.1.2)
- Seek public involvement (T1.1.1.2)
- Use METROPLAN modeling structure (T1.2.1)
- Ensure the CIP is responsive to demands (T1.3.2)
- Consider all available Funding Sources (T1.3.3)
- Provide an efficient and cost-effective transportation system (T1.3.6)
- Implement financially-feasible multimodal transportation system (Obj. T1.3)
- Participate in interlocal agreements, joint participation and other coordinated funding (T1.3.7)
- Ensure existing and new developments are connected (T3.2.2)





Action Requested

- **Find the Sunbridge Parkway Preliminary Design Study Consistent with the Comprehensive Plan**
- **Recommendation for Approval of the Study**



Questions and Discussion



www.orangecountyfl.net/TrafficTransportation/SunbridgeParkway