

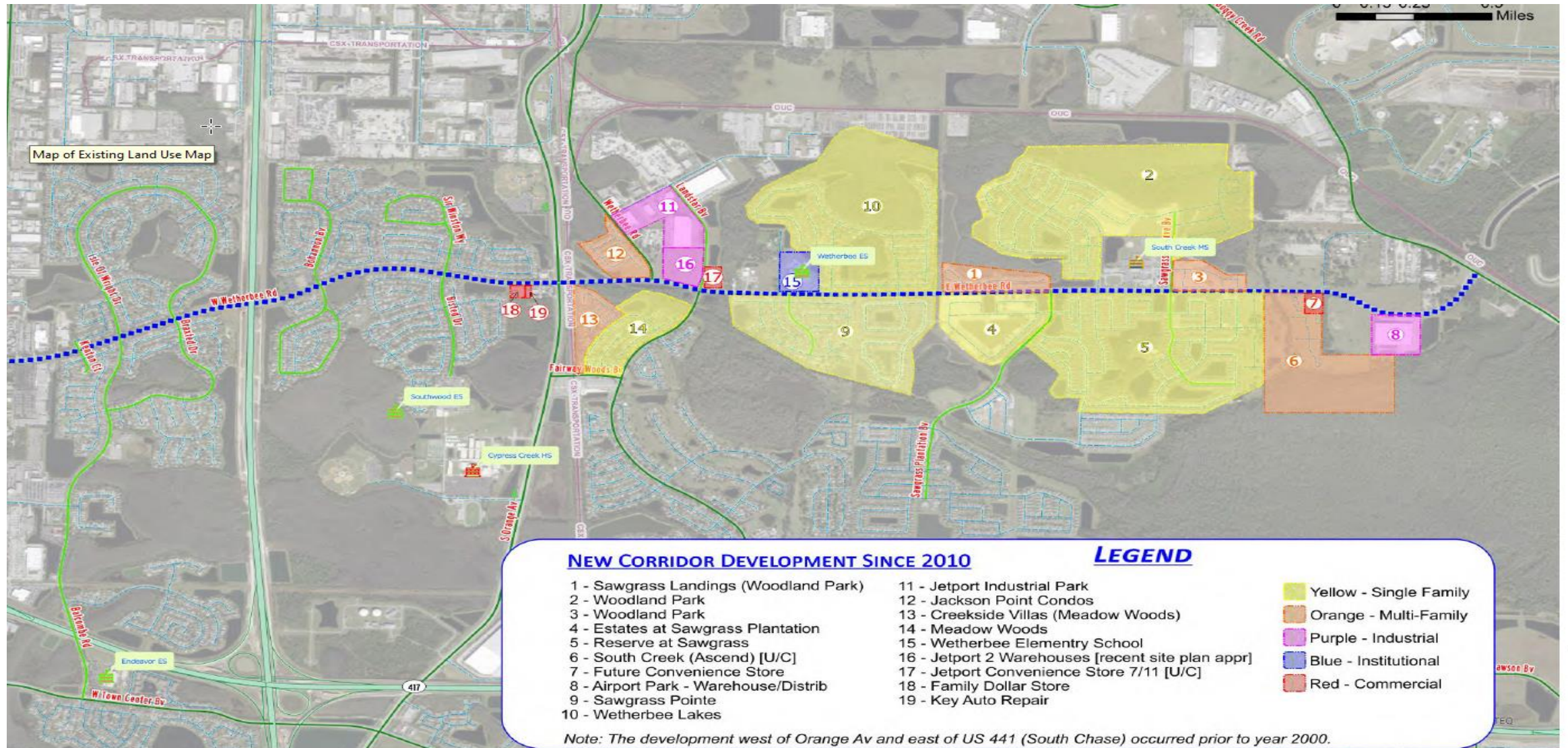
# Southchase PD Parcel 44

CDR-21-11-337

# Status of Traffic Operation Analysis

- As a public citizen how would I go about finding out more info on this or see the report?

# 20 New Developments Since 2010 using Wetherbee



# Schools

- Application: OC-22-016 Southchase PD
  - Dated August 19, 2022
  - Orange County Public School's formal school capacity determination letter established that capacity is **NOT AVAILABLE**
- Parcel 44 is **not vested** for school concurrency.
- 280 Dwelling Units X 0.286 = **80** new students
  - Ascend South Creek and Bainbridge Nona North add an additional **210** students. Total new students **290!**
- Southwood Elementary School is too close for bus service would cause long walk around Single-Family Homes or cut through the properties...

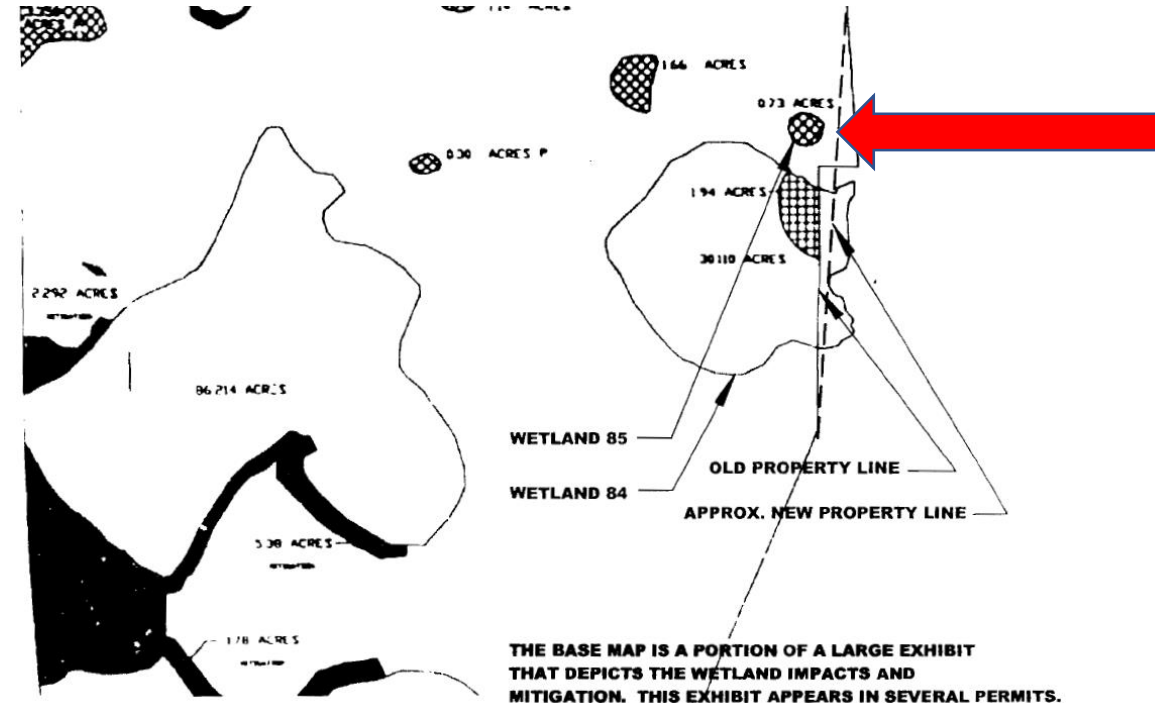
# Overburdened Schools

- Southwood Elementary Capacity is at **94%** as of February 2023
- South Creek Middle Capacity is at **100%** as of February 2023
- Cypress Creek High Capacity is at **125%** as of February 2023
- Orange County Elementary is at **89%** as of February 2023
- Orange County Middle School is at **91%** as of February 2023
- Orange County High School is at **101%** as of February 2023

- [https://cdn5-ss15.sharpschool.com/UserFiles/Servers/Server\\_54619/File/Departments/Student%20Enrollment/Enrollment%20Summaries/2022-23/Enrollment%20Summary%2002%2001%202023.pdf](https://cdn5-ss15.sharpschool.com/UserFiles/Servers/Server_54619/File/Departments/Student%20Enrollment/Enrollment%20Summaries/2022-23/Enrollment%20Summary%2002%2001%202023.pdf)

# Wetland 85 Destruction

.73 Acres of wetland destruction not mentioned in plan.



**SOUTHCHASE - PARCEL 44**  
**WEATHERBEE ROAD AND ORANGE AVENUE**  
ORANGE COUNTY  
Section 23, Township 24 South, Range 29 East

ADVANCED  
ECOLOGICAL SOLUTIONS  
INCORPORATED

**FIGURE 6: OLD & NEW PROPERTY  
LINES AT WETLAND 84**

August 2, 2006

# No plan for wetland fill?

