

RESOLUTION
of the
ORANGE COUNTY BOARD OF COUNTY COMMISSIONERS
regarding
**THE ACCEPTANCE OF THE EAST ORLANDO GATEWAY
SUBDIVISION PLAT INCLUDING RIGHTS-OF-WAY AND
DRAINAGE EASEMENTS**

Resolution No. 2026- M-01

WHEREAS, Orange County has obtained and accepted the East Orlando Gateway Subdivision Plat, including the rights-of-way and drainage easements, as more particularly described in "Exhibit A" to this Resolution, by virtue of that certain sales map of the East Orlando Gateway Subdivision, an unrecorded miscellaneous plat on file with the Orange County Property Appraiser's Office; and

WHEREAS, since the dedication of the East Orlando Gateway Subdivision Plat in 1962, Orange County has continually maintained the rights-of-way and drainage easements within the subdivision; and

WHEREAS, by this Resolution, Orange County formally and for record confirms that it has accepted for dedication and declares said lands to be a part of Orange County's road systems.

NOW, THEREFORE, BE IT RESOLVED BY THE ORANGE COUNTY BOARD OF COUNTY COMMISSIONERS:

Section 1. Acceptance of Plat. Pursuant to Section 177.071, Florida Statutes, the Orange County Board of County Commissioners hereby accepts the dedication of the East Orlando Gateway Subdivision Plat, including the rights-of-way and drainage easements, as more

particularly described in "Exhibit A" to this Resolution. Upon acceptance, Orange County shall be responsible for the continued maintenance of the rights-of-way and drainage easements within the East Orlando Gateway Subdivision.

Section 2. Effective Date. This Resolution shall take effect immediately upon execution.

ADOPTED THIS ____ DAY OF JAN 13 2026, 2026.

ORANGE COUNTY, FLORIDA
By: Board of County Commissioners

By: Bryan W. Brooks
for Jerry L. Demings
Orange County Mayor

ATTEST: Phil Diamond, CPA, County Comptroller
As Clerk of the Board of County Commissioners

By: Jennifer Sara-Klimentz
Deputy Clerk



EXHIBIT "A"**PROJECT: EAST ORLANDO GATEWAY**

(OFFICIAL RECORD BOOK 4, PAGE 10)

DESCRIPTION OF EAST ORLANDO GATEWAY (UNRECORDED PLAT):**OVERALL PARCEL**

A PORTION OF LAND LYING IN SECTIONS 21 AND 28, TOWNSHIP 22 SOUTH, RANGE 32 EAST, ORANGE COUNTY FLORIDA, MORE PARTICULARLY DESCRIBED AS FOLLOWS:

BEGINNING AT THE NORTHWEST CORNER OF THE SECTION 28 AND ALSO THE SOUTHWEST CORNER OF SAID SECTION 21; THENCE N 00° 00' 00" E, ALONG THE WEST LINE OF SAID SECTION 21, A DISTANCE OF 1328.75 FEET TO THE NORTHWEST CORNER OF THE SOUTHWEST 1/4 OF THE SOUTHWEST 1/4 OF SAID SECTION 21; THENCE CONTINUE N 00° 00' 00" E, A DISTANCE OF 617.81 FEET TO A POINT ON THE SOUTH RIGHT OF WAY LINE OF OLD CHENEY HIGHWAY; THENCE S 69° 32' 35" E, ALONG SAID SOUTH RIGHT OF WAY LINE, A DISTANCE OF 1426.39 FEET TO A POINT ON THE EAST LINE OF THE NORTHWEST 1/4 OF THE SOUTHWEST 1/4 OF SAID SECTION 21; THENCE S 00° 11' 00" E, ALONG SAID EAST LINE, A DISTANCE OF 114.88 FEET TO THE NORTHEAST CORNER OF THE SOUTHWEST 1/4 OF THE SOUTHWEST 1/4 OF SAID SECTION 21; THENCE S 00° 11' 00" E, ALONG SAID EAST LINE OF THE SOUTHWEST 1/4 OF THE SOUTHWEST 1/4 OF SAID SECTION 21, A DISTANCE OF 1330.98 FEET TO THE NORTHEAST CORNER OF THE NORTHWEST 1/4 OF THE NORTHWEST 1/4 OF SAID SECTION 28; THENCE S 00° 07' 30" E, ALONG THE EAST LINE OF THE NORTHWEST 1/4 OF THE NORTHWEST 1/4 OF SECTION 28, A DISTANCE OF 1000.36 FEET; THENCE DEPARTING SAID EAST LINE, RUN N 89° 50' 40" W, A DISTANCE OF 1334.66 FEET TO THE WEST LINE OF THE NORTHWEST 1/4 OF THE NORTHWEST 1/4 OF SAID SECTION 28; THENCE N 00° 29' 40" W, ALONG SAID WEST LINE, A DISTANCE OF 994.59 FEET TO THE POINT OF BEGINNING;

CONTAINING 3,604,656 SQ FT OR 82.74 ACRES, MORE OR LESS

RIGHT OF WAY DEDICATION (GRISSOM ROAD)

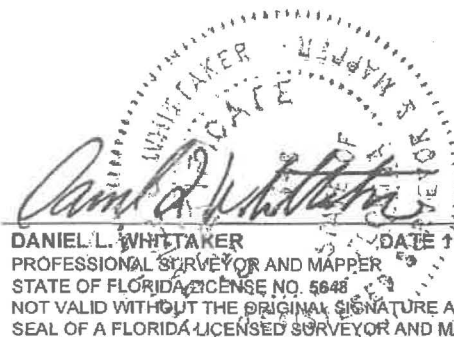
A PORTION OF LAND LYING IN THE SOUTHWEST 1/4 OF SECTION 21, TOWNSHIP 22 SOUTH, RANGE 32 EAST, ORANGE COUNTY FLORIDA MORE PARTICULARLY DESCRIBED AS FOLLOWS:

COMMENCE AT THE SOUTHWEST CORNER OF SAID SECTION 21; THENCE N 00° 00' 00" E, ALONG THE WEST LINE OF SAID SECTION 21, A DISTANCE OF 1328.75 FEET TO A POINT ON THE NORTH LINE OF SAID SOUTHWEST 1/4 OF THE SOUTHWEST 1/4 OF SAID SECTION 21; THENCE RUN N 89° 48' 00" E, A DISTANCE OF 760.28 FEET TO THE SOUTHEAST CORNER OF LOT 122, EAST ORLANDO GATEWAY (UNRECORDED PLAT) AND ALSO BEING THE **POINT OF BEGINNING**; THENCE DEPARTING SAID NORTH LINE, RUN N 20° 27' 25" E, ALONG THE EAST LINE OF SAID LOT 122, A DISTANCE OF 78.79 FEET TO THE NORTHEAST CORNER OF SAID LOT 122; THENCE N 69° 32' 35" W, ALONG THE SOUTH RIGHT OF WAY LINE OF GRISSOM ROAD AND THE NORTH LINE OF LOTS 73 AND 122, OF SAID UNRECORDED PLAT, A DISTANCE OF 456.60 FEET TO THE NORTHWEST CORNER OF LOT 73, OF SAID UNRECORDED PLAT; THENCE DEPARTING SAID SOUTH LINE, RUN N 00° 00' 00" E, A DISTANCE OF 32.02 FEET TO A POINT ON THE SOUTH LINE OF LOT 18 AND THE NORTH RIGHT OF WAY LINE OF SAID GRISSOM ROAD OF SAID UNRECORDED PLAT; THENCE S 69° 32' 35" E, ALONG SAID NORTH RIGHT OF WAY LINE AND THE SOUTH LINE OF LOTS 7 THROUGH 18, A DISTANCE OF 597.80 TO THE WEST LINE OF LOT 6 OF OF SAID UNRECORDED PLAT; THENCE S 20° 27' 25" W, ALONG SAID WEST LINE, A DISTANCE OF 59.78 FEET TO THE SOUTHWEST CORNER OF LOT 6 AND THE NORTH LINE OF LOT 121 OF SAID UNRECORDED PLAT; THENCE S 89° 48' 00" W, ALONG SAID NORTH LINE, A DISTANCE OF 138.93 FEET TO THE POINT OF BEGINNING;

CONTAINING 24,824 SQ FT OR 0.57 ACRES, MORE OR LESS

LEGEND:

CCR = CERTIFIED CORNER RECORD
D.E = DRAINAGE EASEMENT
LB = LICENSED BUSINESS
ORB = OFFICIAL RECORD BOOK
PG(S) = PAGE(S)
PLS = PROFESSIONAL LAND SURVEYOR
PB = PLAT BOOK
PSM = PROFESSIONAL SURVEYOR & MAPPER
P.O.B = POINT OF BEGINNING
R#E = RANGE
RLS = REGISTERED LAND SURVEYOR
RAW = RIGHT-OF-WAY
T#S = TOWNSHIP
○ = CHANGE IN DIRECTION


DANIEL L. WHITTAKER
PROFESSIONAL SURVEYOR AND MAPPER
STATE OF FLORIDA LICENSE NO. 5648
NOT VALID WITHOUT THE ORIGINAL SIGNATURE AND SEAL OF A FLORIDA LICENSED SURVEYOR AND MAPPER.

NOT VALID WITHOUT SHEET 2, 3, 4 OF 5


FIELD DATE: N/A	DATE: 08/08/2025	SECTION: 21 & 28	PUBLIC WORKS ENGINEERING DIVISION SURVEY SECTION 4200 SOUTH JOHN YOUNG PARKWAY ORLANDO, FLORIDA 32839-9205 (407) 836-7951		DRAWING SCALE: N/A
DRAWN BY: W. SAMALOT		TOWNSHIP: 22S			COUNTY PROJECT NUMBER
CHECKED BY:	REVISIONS:	RANGE: 32E			9414
APPROVED BY: D. WHITTAKER		SHEET 1 OF 5			

EXHIBIT "A"**PROJECT: EAST ORLANDO GATEWAY**

(OFFICIAL RECORD BOOK 4, PAGE 10)

DESCRIPTION OF EAST ORLANDO GATEWAY (UNRECORDED PLAT):**DRAINAGE EASEMENT #1**

LYING WITHIN A PORTION OF LOTS 2-6, 75-96, 98, 101-121, AND 122, EAST ORLANDO GATEWAY (UNRECORDED PLAT) IN ORANGE COUNTY, FLORIDA, ALSO LYING WITHIN SECTIONS 21 & 28, TOWNSHIP 22 SOUTH, RANGE 32 EAST, ORANGE COUNTY, FLORIDA, BEING MORE PARTICULARLY DESCRIBED AS FOLLOWS:

COMMENCE AT THE NORTHWEST CORNER OF SAID SECTION 28 AND ALSO THE SOUTHWEST CORNER OF SAID SECTION 21; THENCE N 00° 00' 00" E, ALONG THE WEST LINE OF SAID SECTION 21, A DISTANCE OF 1328.75 FEET TO THE NORTH LINE OF SAID SOUTHWEST 1/4 OF THE SOUTHWEST OF 1/4 OF SAID SECTION 21; THENCE RUN N 89° 48' 00" E, ALONG THE NORTH LINE OF SAID SOUTHWEST 1/4 OF THE SOUTHWEST OF 1/4 OF SAID SECTION 21, A DISTANCE OF 610.02 FEET TO THE POINT OF BEGINNING; THENCE DEPARTING SAID NORTH LINE, RUN N 00° 00' 00" E, A DISTANCE OF 15.00 FEET; THENCE N 89° 48' 00" E, A DISTANCE OF 155.87 FEET TO A POINT ON THE WESTERLY RIGHT OF WAY LINE OF GRISSOM ROAD OF SAID UNRECORDED PLAT; THENCE ALONG THE WESTERLY, SOUTHERLY AND EASTERLY RIGHT OF WAY LINE THE FOLLOWING COURSES AND DISTANCES; S 20° 27' 25" W, A DISTANCE OF 16.03 FEET TO THE SOUTHEAST CORNER OF LOT 122, OF SAID UNRECORDED PLAT; THENCE N 89° 48' 00" E, A DISTANCE OF 138.93 FEET TO THE SOUTHWEST CORNER OF LOT 6; THENCE N 20° 27' 25" E, A DISTANCE OF 16.03 FEET TO A POINT ON THE WEST LINE OF LOT 6, OF SAID UNRECORDED PLAT; THENCE DEPARTING SAID WESTERLY LINE RUN, N 89° 48' 00" E, A DISTANCE OF 241.37 FEET TO THE EASTERLY LINE OF LOT 2 OF SAID UNRECORDED PLAT; THENCE N 26° 52' 27" E, ALONG SAID EASTERLY LINE, A DISTANCE OF 161.45 FEET TO A POINT ON THE SOUTH RIGHT OF WAY LINE OF OLD CHENEY HIGHWAY AND ALSO THE NORTHEAST CORNER OF LOT 2 OF SAID UNRECORDED PLAT; THENCE S 69° 32' 35" E, ALONG SAID SOUTH RIGHT WAY LINE, A DISTANCE OF 20.13 FEET TO THE NORTHWEST CORNER OF LOT 1 AND ALSO A POINT ON THE WESTERLY LINE OF LOT 1 OF SAID UNRECORDED PLAT; THENCE DEPARTING SAID SOUTH LINE, RUN S 26° 52' 27" W, ALONG SAID WESTERLY LINE, A DISTANCE OF 170.33 FEET TO THE SOUTHWEST CORNER OF SAID LOT 1; THENCE CONTINUE S 26° 52' 27" W, A DISTANCE OF 16.85 FEET; THENCE S 89° 48' 00" W, A DISTANCE OF 483.41 FEET; THENCE S 00° 00' 00" E, A DISTANCE OF 1174.76 FEET; THENCE N 89° 27' 30" E, A DISTANCE OF 280.60 FEET TO THE WEST RIGHT OF WAY LINE OF GLENN ROAD; THENCE S 00° 11' 00" E, ALONG SAID WEST LINE, A DISTANCE OF 30.00 FEET; THENCE DEPARTING SAID WEST LINE, RUN S 89° 27' 30" W, A DISTANCE OF 280.70 FEET; THENCE S 00° 00' 00" W, A DISTANCE OF 110.15 FEET; THENCE S 00° 29' 40" E, A DISTANCE OF 203.59 FEET; THENCE S 13° 37' 35" W, A DISTANCE OF 816.41 FEET; THENCE N 89° 50' 40" W, A DISTANCE OF 61.70 FEET; THENCE N 13° 37' 35" E, A DISTANCE OF 823.35 FEET; THENCE N 00° 29' 40" W, A DISTANCE OF 196.42 FEET; THENCE N 00° 00' 00" E, A DISTANCE OF 1329.96 FEET TO THE POINT OF BEGINNING.

CONTAINING 166,105 SQ FT OR 3.81 ACRES, MORE OR LESS

TOGETHER WITH

DRAINAGE EASEMENT # 2

ALL THAT PORTION OF EAST ORLANDO GATEWAY AN UNRECORDED PLAT LYING WITHIN SECTIONS 21 & 28, TOWNSHIP 22 SOUTH, RANGE 32 EAST, ORANGE COUNTY, FLORIDA, BEING AN EXHIBIT "A" ATTACHED HEREON AND BY REFERENCE MADE A PART HEREOF, MORE PARTICULARLY DESCRIBED AS THE SOUTH 15 FOOT OF LOT 129 AND LOT 152; LYING ON THE NORTH 15.00 FOOT OF LOT 130 AND LOT 151 OF SAID UNRECORDED PLAT.

CONTAINING 8,100 SQ FT OR 3.81 ACRES, MORE OR LESS

NOT VALID WITHOUT SHEET 1, 3, 4 OF 5


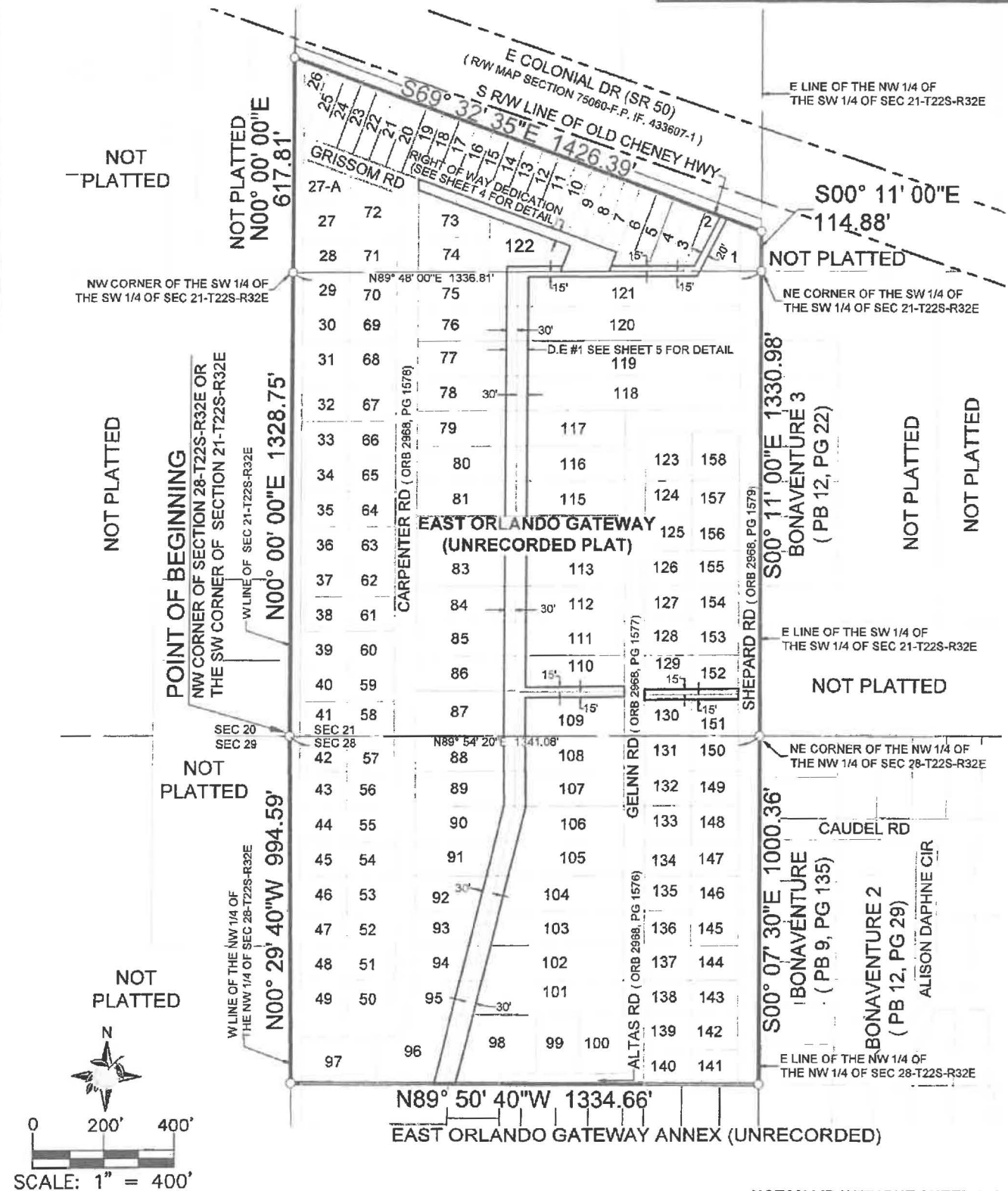
FIELD DATE: N/A	DATE: 08/08/2025	SECTION: 21 & 28	PUBLIC WORKS ENGINEERING DIVISION SURVEY SECTION 4200 SOUTH JOHN YOUNG PARKWAY ORLANDO, FLORIDA 32839-9205 (407) 836-7951		DRAWING SCALE: N/A
DRAWN BY: W. SAMALOT		TOWNSHIP: 22S			COUNTY PROJECT NUMBER
CHECKED BY:	REVISIONS:	RANGE: 32E			9414
APPROVED BY: D. WHITTAKER		SHEET 2 OF 5			

EXHIBIT "A"
PROJECT: EAST ORLANDO GATEWAY
(OFFICIAL RECORD BOOK 4, PAGE 10)



NOT VALID WITHOUT SHEET 1, 2, 4 OF 5

FIELD DATE: N/A	DATE: 08/08/2025	SECTION: 21 & 28	PUBLIC WORKS ENGINEERING DIVISION SURVEY SECTION 4200 SOUTH JOHN YOUNG PARKWAY ORLANDO, FLORIDA 32839-9205 (407) 836-7951		DRAWING SCALE: 1"=400'
DRAWN BY: W. SAMALOT		TOWNSHIP: 22S			COUNTY PROJECT NUMBER
CHECKED BY:	REVISIONS:	RANGE: 32E			9414
APPROVED BY: D. WHITTAKER		SHEET 3 OF 5			

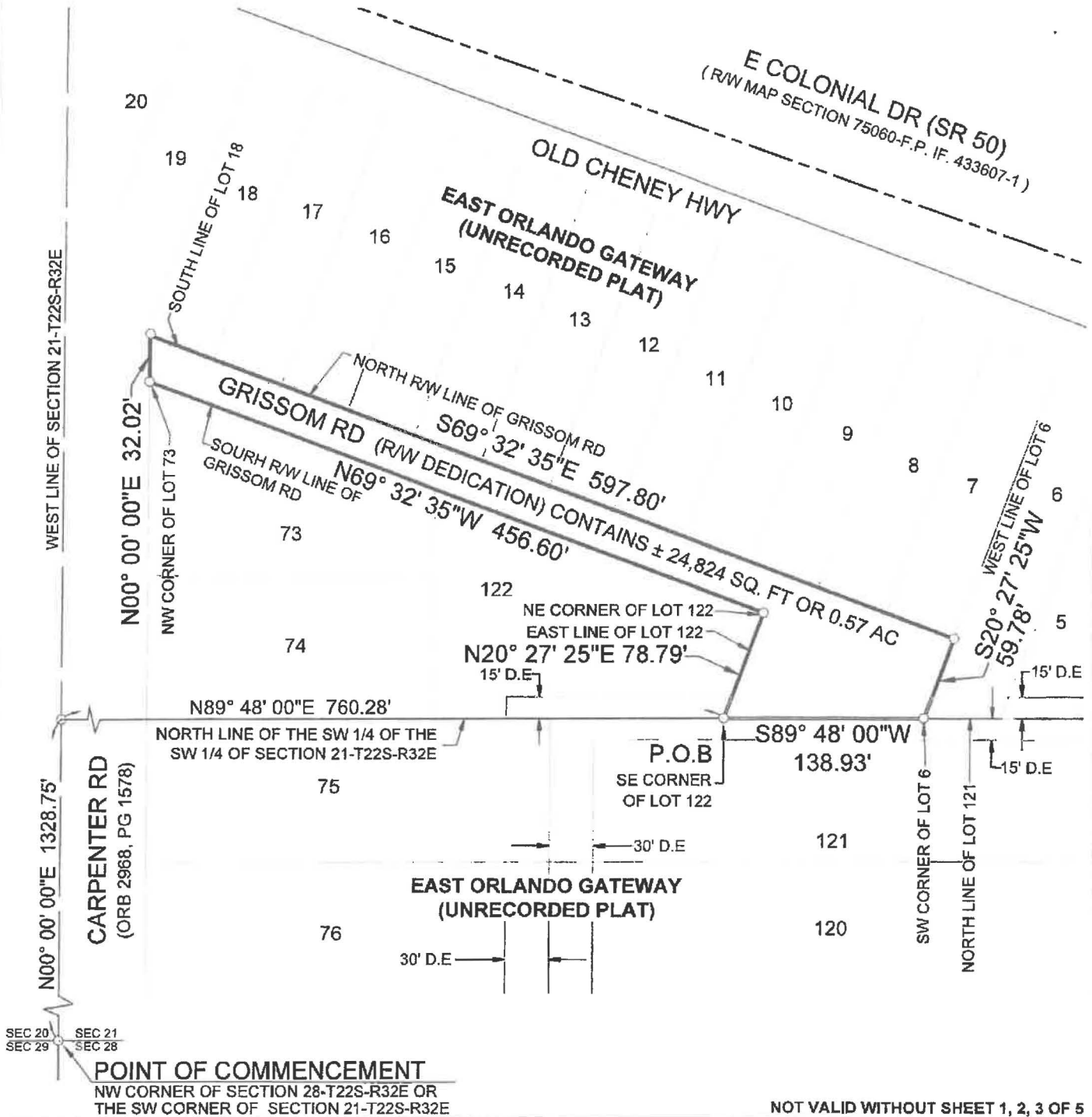
EXHIBIT "A"

PROJECT: EAST ORLANDO GATEWAY

(OFFICIAL RECORD BOOK 4, PAGE 10)



0 50' 100'
SCALE: 1" = 100'




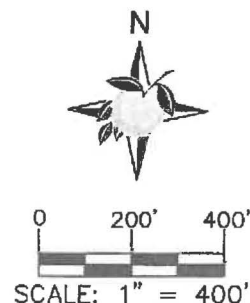
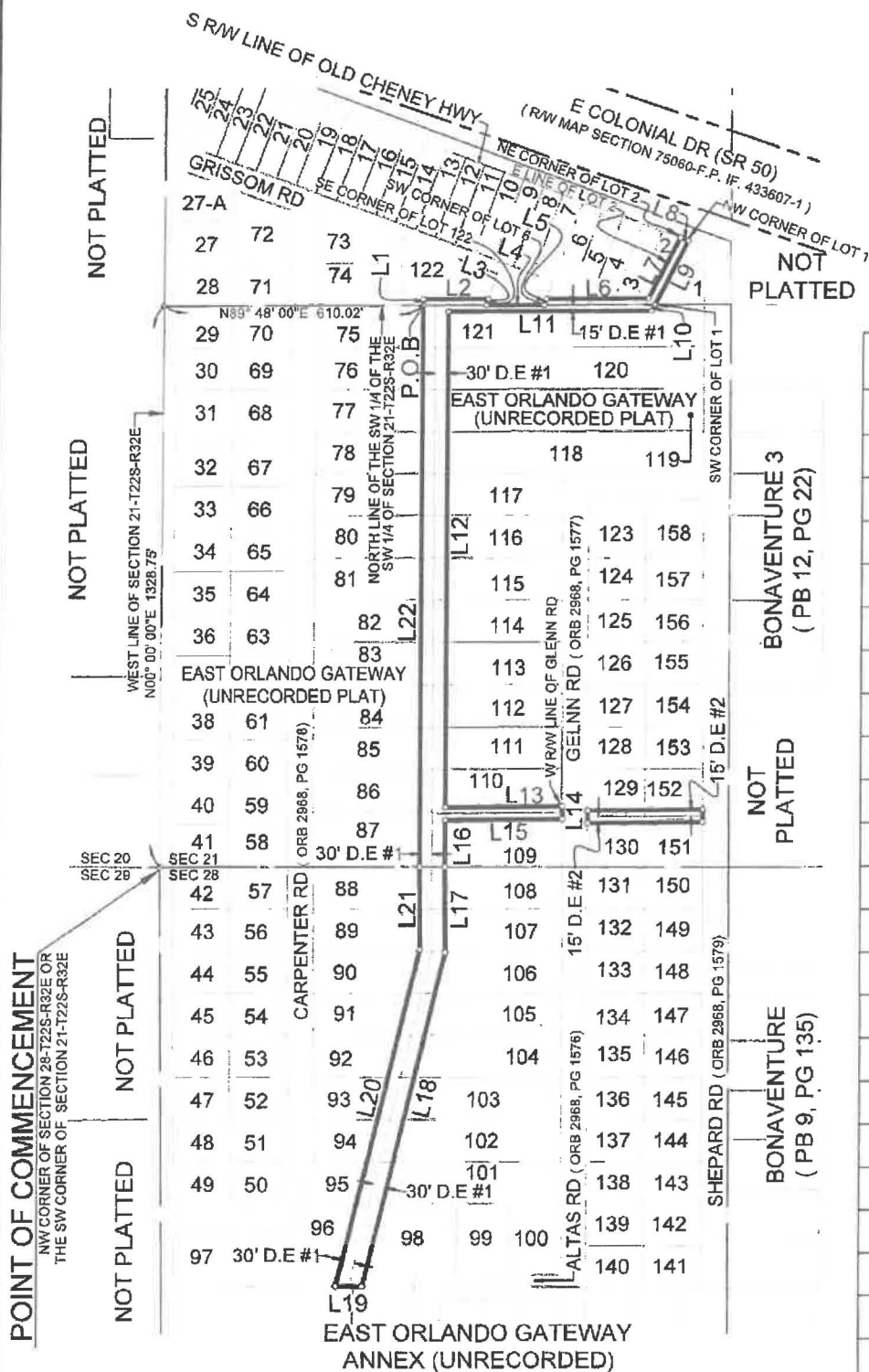
FIELD DATE: N/A	DATE: 08/08/2025	SECTION: 21 & 28	PUBLIC WORKS ENGINEERING DIVISION SURVEY SECTION  4200 SOUTH JOHN YOUNG PARKWAY ORLANDO, FLORIDA 32839-9205 (407) 836-7951	DRAWING SCALE: 1"=100'
DRAWN BY: W. SAMALOT	REVISIONS:	TOWNSHIP: 22S		COUNTY PROJECT NUMBER 9414
CHECKED BY:		RANGE: 32E		
APPROVED BY: D. WHITTAKER		SHEET 4 OF 5		

EXHIBIT "A"

PROJECT: EAST ORLANDO GATEWAY

(OFFICIAL RECORD BOOK 4, PAGE 10)



PARCEL LINE TABLE

LINE #	DIRECTION	LENGTH
L1	N00° 00' 00"E	15.00'
L2	N89° 48' 00"E	155.87'
L3	S20° 27' 25"W	16.03'
L4	N89° 48' 00"E	138.93'
L5	N20° 27' 25"E	16.03'
L6	N89° 48' 00"E	241.37'
L7	N26° 52' 27"E	161.45'
L8	S69° 32' 35"E	20.13'
L9	S26° 52' 27"W	170.33'
L10	S26° 52' 27"W	16.85'
L11	S89° 48' 00"W	483.41'
L12	S00° 00' 00"E	1174.76'
L13	N89° 27' 30"E	280.60'
L14	S00° 11' 00"E	30.00'
L15	S89° 27' 30"W	280.70'
L16	S00° 00' 00"W	110.15'
L17	S00° 29' 40"E	203.59'
L18	S13° 37' 35"W	816.41'
L19	N89° 50' 40"W	61.70'
L20	N13° 37' 35"E	823.35'
L21	N00° 29' 40"W	196.42'
L22	N00° 00' 00"E	1329.96'

NOT VALID WITHOUT SHEET 1, 2, 3 OF 4

FIELD DATE: N/A
 DRAWN BY: W. SAMALOT
 CHECKED BY:
 APPROVED BY: D. WHITTAKER

DATE:
 08/08/2025

REVISIONS:

SECTION: 21 & 28
 TOWNSHIP: 22S
 RANGE: 32E
 SHEET 5 OF 5

PUBLIC WORKS
 ENGINEERING DIVISION
 SURVEY SECTION
 4200 SOUTH JOHN YOUNG PARKWAY
 ORLANDO, FLORIDA 32839-9205
 (407) 836-7951



DRAWING SCALE:
 1"=400'
 COUNTY PROJECT
 NUMBER
 9414