



NOAH'S NOTES

Saving nature in your backyard

NoahsNotes.org

**OPPOSED TO
CDR-15-10-293 & PSP 16-12-241**

Negative Impacts:

- **Regional Wildlife Corridor**
 - **Native & Endangered Wildlife**
- **Hydrology**
 - **Storm Water Management**
 - **Flood Prevention**
- **Property Value**



NOAH'S NOTES

Saving nature in your backyard



SIERRA
CLUB
FOUNDED 1892



**Friends of
the Earth**



Audubon

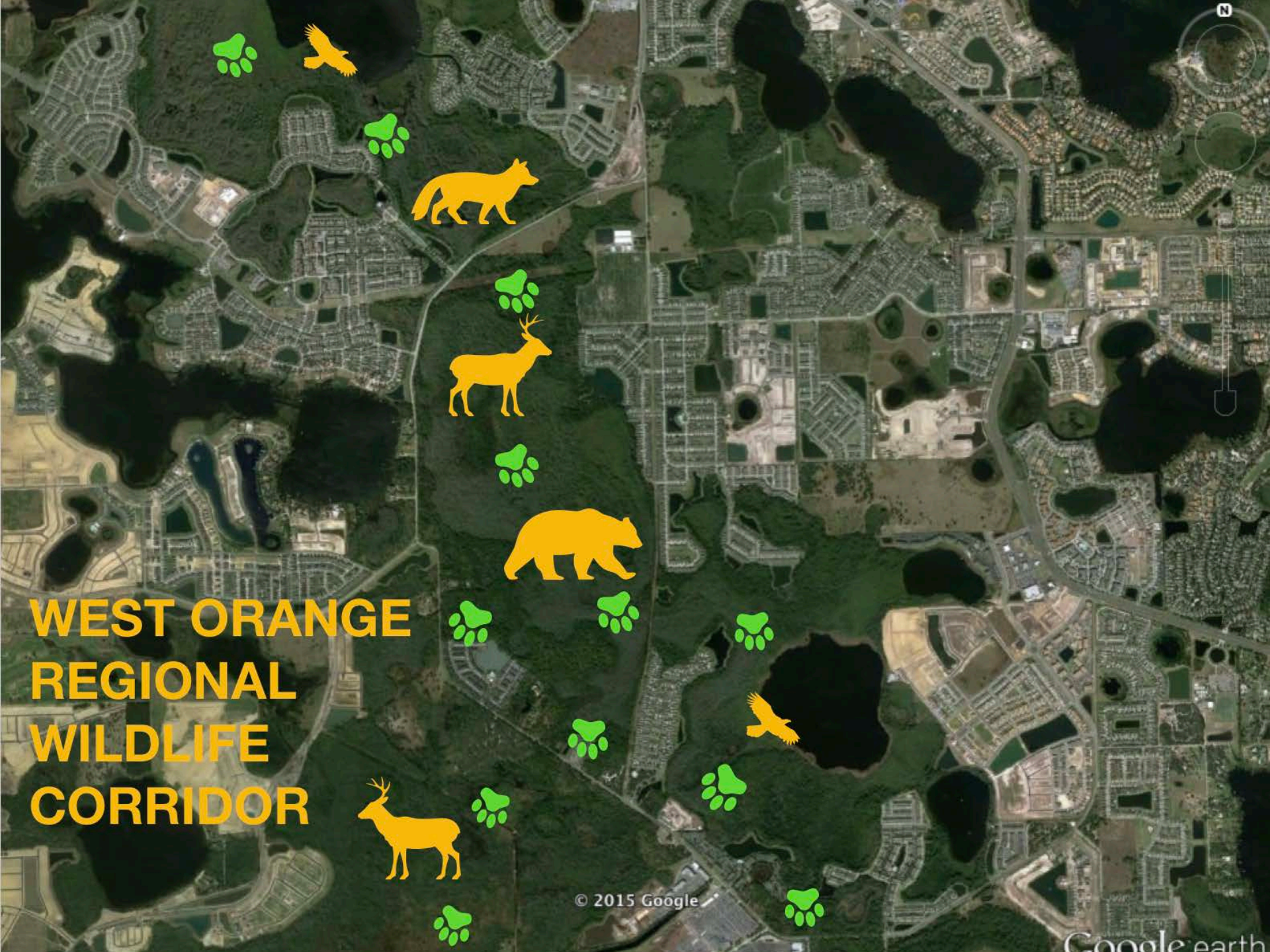
Reject Orange County, Florida, Land Use Map Amendment #2015-2-A-1-4 and Place Land in Permanent Conservation Preserve

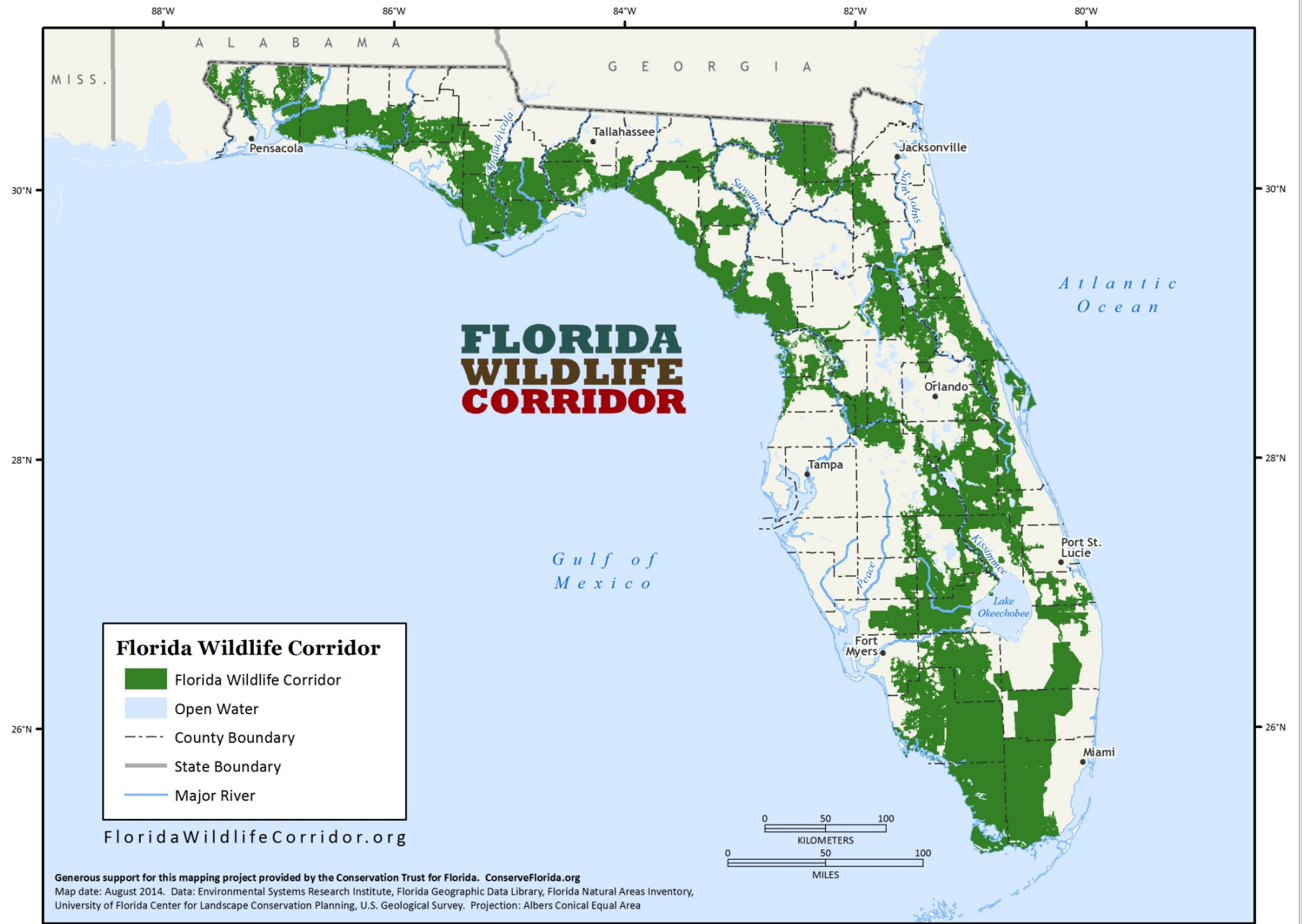
Petition by [Noah's Notes](#)

To be delivered to **Mayor Teresa Jacobs, Mayor, Orange County, Florida, Commissioner Edwards, Commissioner, Orange County, Florida, Commissioner Thompson, Commissioner, Orange County, Florida, Commissioner Siplin, Commissioner, Orange County, Florida, Commissioner Clarke, Commissioner, Orange County, Florida** and 12 other targets ([click here to see more](#))

We urge you to reject this land use map amendment and protect this undisturbed natural land as a permanent conservation preserve by way of public or private acquisition and placement into the Orange County Green Place program or private land conservation trust.

WEST ORANGE REGIONAL WILDLIFE CORRIDOR













**Over 60% of the world's
wildlife has been lost
in the last 40 years.**

World Wildlife Fund Living Planet Report 2018



**ORANGE COUNTY
COMPREHENSIVE PLAN
GOALS, OBJECTIVES AND POLICIES**

FLU4

It is Orange County's goal to ensure sustainable, quality development in Southwest Orange County to allow for a transition from rural to urban uses while protecting environmental quality.

FLU4.5 1 ENVIRONMENT

Development standards shall be adopted and implemented that ensure protection of the natural and built environment through the provision of greenbelts... and preservation of ecosystems through the creation of open space linkages.

LAKESIDE VILLAGE GENERAL PRINCIPLES

FLU4.1.1

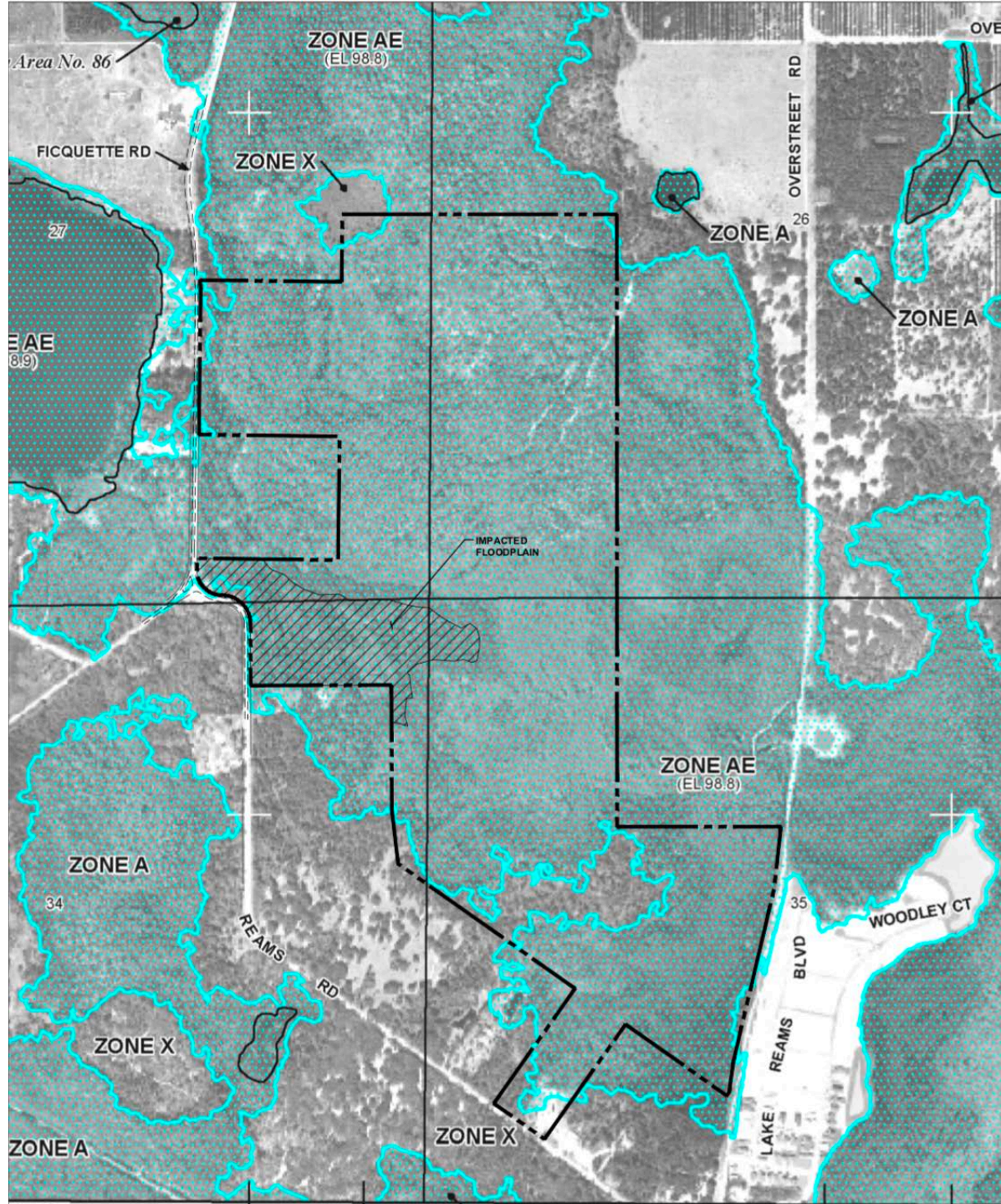
G. Each village shall have a well-defined edge, such as greenbelts or wildlife corridors permanently protected from development.

LAKESIDE VILLAGE

GENERAL PRINCIPLES

FLU4.1.1 I

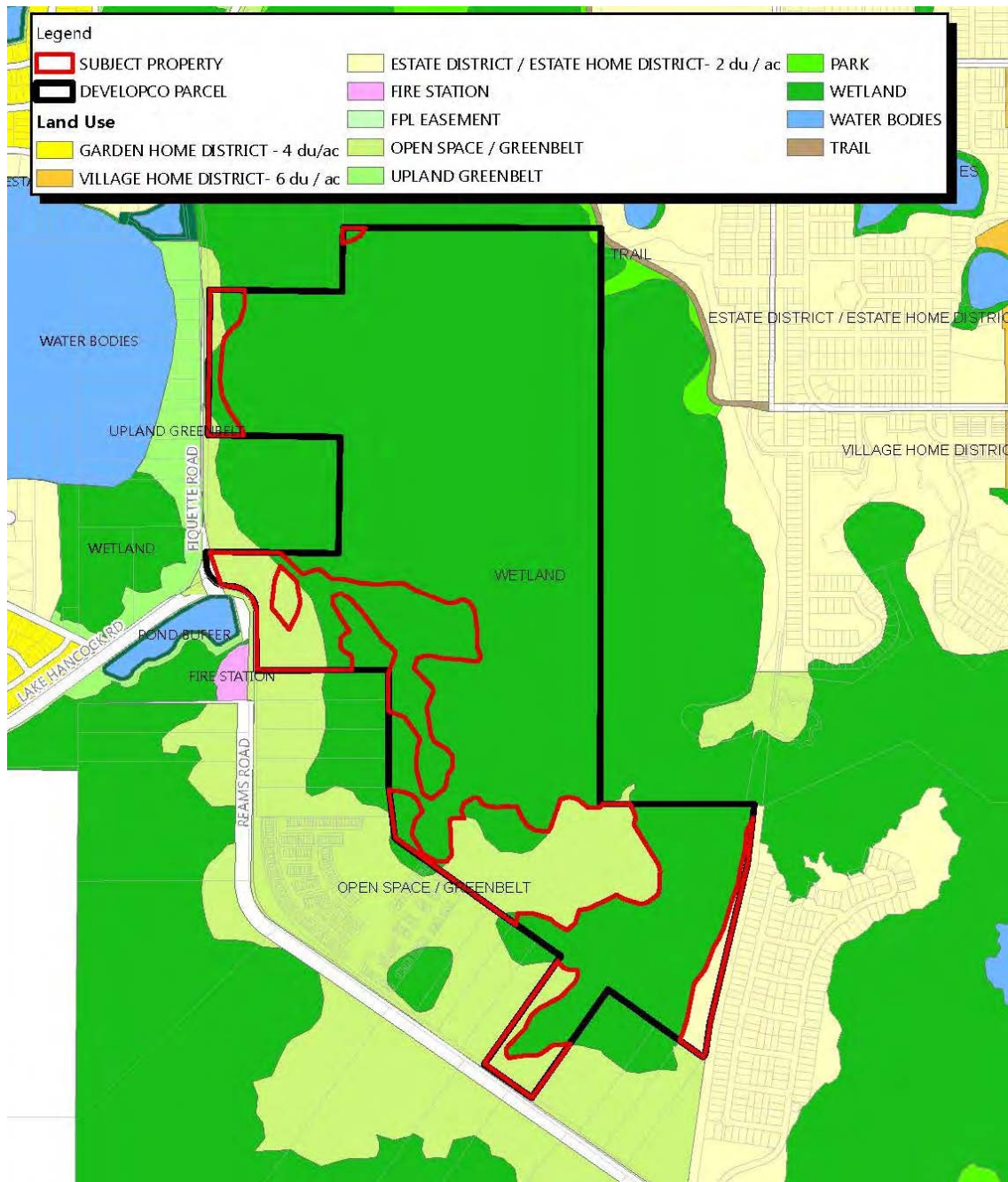
I. Wherever possible, the natural terrain, drainage and vegetation of the area shall be preserved with superior examples contained within parks or greenbelts.





09/12/2017

Figure 2: Current FLU



AGREEABLE

Sustainable Development of 40 acres

- @ Fiquette & Reams Road
- Multi-family Housing &
- Storm Water Retention

when

- Reams Road improvement project complete
- Existing roadway is incapable of handling increased vehicle traffic

NOT AGREEABLE

To any development of the natural uplands and wetlands in the north, east, and southern portions of this parcel.