



Interoffice Memorandum

January 17, 2020

TO: Mayor Jerry L. Demings  
and Board of County Commissioners

FROM: Joseph C. Kunkel, P.E., Director, Public Works Department

CONTACT PERSON: Humberto L. Castellero, P. E., PTOE, Interim Manager  
Traffic Engineering Division

PHONE NUMBER: (407) 836-7891

SUBJ: Installation of Traffic Control Devices and "No Parking" signs in  
Sanctuary at Lakes of Windermere

Our staff recommends installing the following traffic control devices in Sanctuary at Lakes of Windermere:

Install "STOP" signs on:  
Kiwano Way at Orange Isle Drive  
Cucamelon Court at Kiwano Way  
Kiwano Way at Orange Isle Drive  
Orange Isle Drive at Cucamelon Court

The Fire Marshal recommends installing the following "No Parking" signs in Sanctuary at Lakes of Windermere:

Install "NO PARKING" signs on:  
Orange Isle Drive  
Kiwano Way  
Cucamelon Court

**Action Requested: Approval of Traffic Control Devices and "No Parking" signs installation in Sanctuary at Lakes of Windermere. District 1.**

JCK/HLC/nad

Attachments

**SANCTUARY AT LAKES OF WINDERMERE**  
**A PORTION OF THE SOUTHEAST QUARTER OF SECTION 23, TOWNSHIP 23 SOUTH,**  
**RANGE 27 EAST, ORANGE COUNTY, FLORIDA**  
**DISTRICT # 1**

<b>STOP/STREET</b>			<b>INITIALS</b>
<b>(1)</b>	<b>(Ft _____ N)</b>	<b>on Kiwano Way at Orange Isle Drive</b>	<b>00 _____ 00 _____</b>
<b>(2)</b>	<b>(Ft _____ E)</b>	<b>on Cucamelon Court at Kiwano Way</b>	<b>00 _____ 00 _____</b>
<b>(3)</b>	<b>(Ft _____ S)</b>	<b>on Kiwano Way at Orange Isle Drive</b>	<b>00 _____ 00 _____</b>
<b>(4)</b>	<b>(Ft _____ W)</b>	<b>on Orange Isle Drive at Cucamelon Court</b>	<b>00 _____ 00 _____</b>

**SPEED LIMIT 25 MPH**

<b>(5)</b>	<b>(Ft _____ E)</b>	<b>on Orange Isle Drive at Kiwano Way</b>	<b>_____ _____</b>
------------	---------------------	---	------------------------

**END OF ROAD TREATMENT**

<b>(6)</b>	<b>(Ft _____ N)</b>	<b>on Cucamelon Court at Orange Isle Drive</b>	<b>_____ _____</b>
------------	---------------------	--	------------------------

**NO PARKING with arrows**

**On Orange Isle Drive from Duncaster Street extending approximately 220ft west on both sides and from the west end of the mail box parking bay extending west, north and east to Cucamelon Court on the north, east and south sides and in the curves as indicated on the attached parking plan map.**

**On Kiwano Way from Orange Isle Drive south leg extending north to Orange Isle Drive north leg on the east side and in the curves as indicated on the attached parking plan map.**

**On Cucamelon Court from Kiwano Way extending east and north into the cul-de-sac on the north and west sides and in the curves as indicated on the attached parking plan map.**

**1/17/2020**

**ahw/**

# SANCTUARY AT LAKES OF WINDERMERE

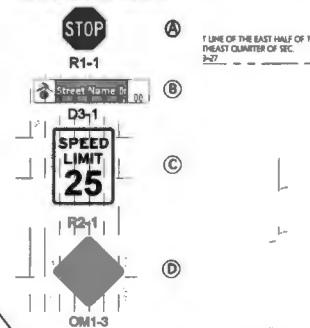
A PORTION OF THE SOUTHEAST QUARTER OF SECTION 23, TOWNSHIP 23 SOUTH, RANGE 27 EAST, ORANGE COUNTY, FLORIDA

SHEET 2 OF 9

PLAT BOOK

PAGE

## SIGN LEGEND



**NO CONCRETE INSTALLATIONS**

**NO CONCRETE INSTALLATIONS**

**NO CONCRETE INSTALLATIONS**

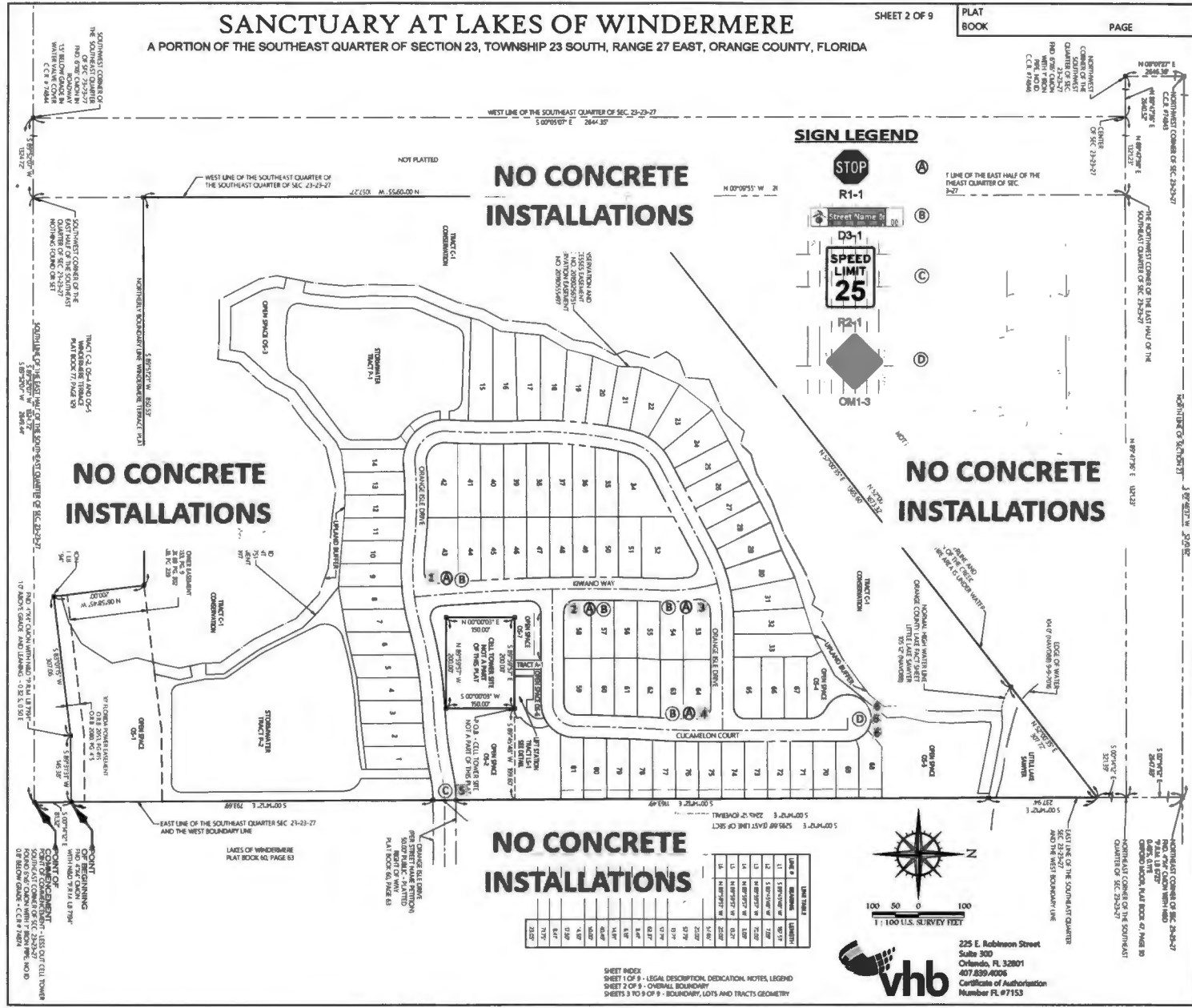
**NO CONCRETE INSTALLATIONS**

LINE #	BEARING	LENGTH
11	S 89°00'00" W	50.00
12	S 89°00'00" W	50.00
13	S 89°00'00" W	50.00
14	S 89°00'00" W	50.00
15	S 89°00'00" W	50.00
16	S 89°00'00" W	50.00
17	S 89°00'00" W	50.00
18	S 89°00'00" W	50.00
19	S 89°00'00" W	50.00
20	S 89°00'00" W	50.00
21	S 89°00'00" W	50.00
22	S 89°00'00" W	50.00
23	S 89°00'00" W	50.00
24	S 89°00'00" W	50.00
25	S 89°00'00" W	50.00
26	S 89°00'00" W	50.00
27	S 89°00'00" W	50.00
28	S 89°00'00" W	50.00
29	S 89°00'00" W	50.00
30	S 89°00'00" W	50.00
31	S 89°00'00" W	50.00
32	S 89°00'00" W	50.00
33	S 89°00'00" W	50.00
34	S 89°00'00" W	50.00
35	S 89°00'00" W	50.00
36	S 89°00'00" W	50.00
37	S 89°00'00" W	50.00
38	S 89°00'00" W	50.00
39	S 89°00'00" W	50.00
40	S 89°00'00" W	50.00
41	S 89°00'00" W	50.00
42	S 89°00'00" W	50.00
43	S 89°00'00" W	50.00
44	S 89°00'00" W	50.00
45	S 89°00'00" W	50.00
46	S 89°00'00" W	50.00
47	S 89°00'00" W	50.00
48	S 89°00'00" W	50.00
49	S 89°00'00" W	50.00
50	S 89°00'00" W	50.00
51	S 89°00'00" W	50.00
52	S 89°00'00" W	50.00
53	S 89°00'00" W	50.00
54	S 89°00'00" W	50.00
55	S 89°00'00" W	50.00
56	S 89°00'00" W	50.00
57	S 89°00'00" W	50.00
58	S 89°00'00" W	50.00
59	S 89°00'00" W	50.00
60	S 89°00'00" W	50.00
61	S 89°00'00" W	50.00
62	S 89°00'00" W	50.00
63	S 89°00'00" W	50.00
64	S 89°00'00" W	50.00
65	S 89°00'00" W	50.00
66	S 89°00'00" W	50.00
67	S 89°00'00" W	50.00
68	S 89°00'00" W	50.00
69	S 89°00'00" W	50.00
70	S 89°00'00" W	50.00
71	S 89°00'00" W	50.00
72	S 89°00'00" W	50.00
73	S 89°00'00" W	50.00
74	S 89°00'00" W	50.00
75	S 89°00'00" W	50.00
76	S 89°00'00" W	50.00
77	S 89°00'00" W	50.00
78	S 89°00'00" W	50.00
79	S 89°00'00" W	50.00
80	S 89°00'00" W	50.00
81	S 89°00'00" W	50.00



**vhb**  
225 E. Robinson Street  
Suite 300  
Orlando, FL 32801  
407.899.4006  
Certificate of Authorization  
Number FL #7153

SHEET INDEX  
SHEET 1 OF 9 - LEGAL DESCRIPTION, DEDICATION, NOTES, LEGEND  
SHEET 2 OF 9 - OVERALL BOUNDARY  
SHEETS 3 TO 9 OF 9 - BOUNDARY, LOTS AND TRACTS GEOMETRY



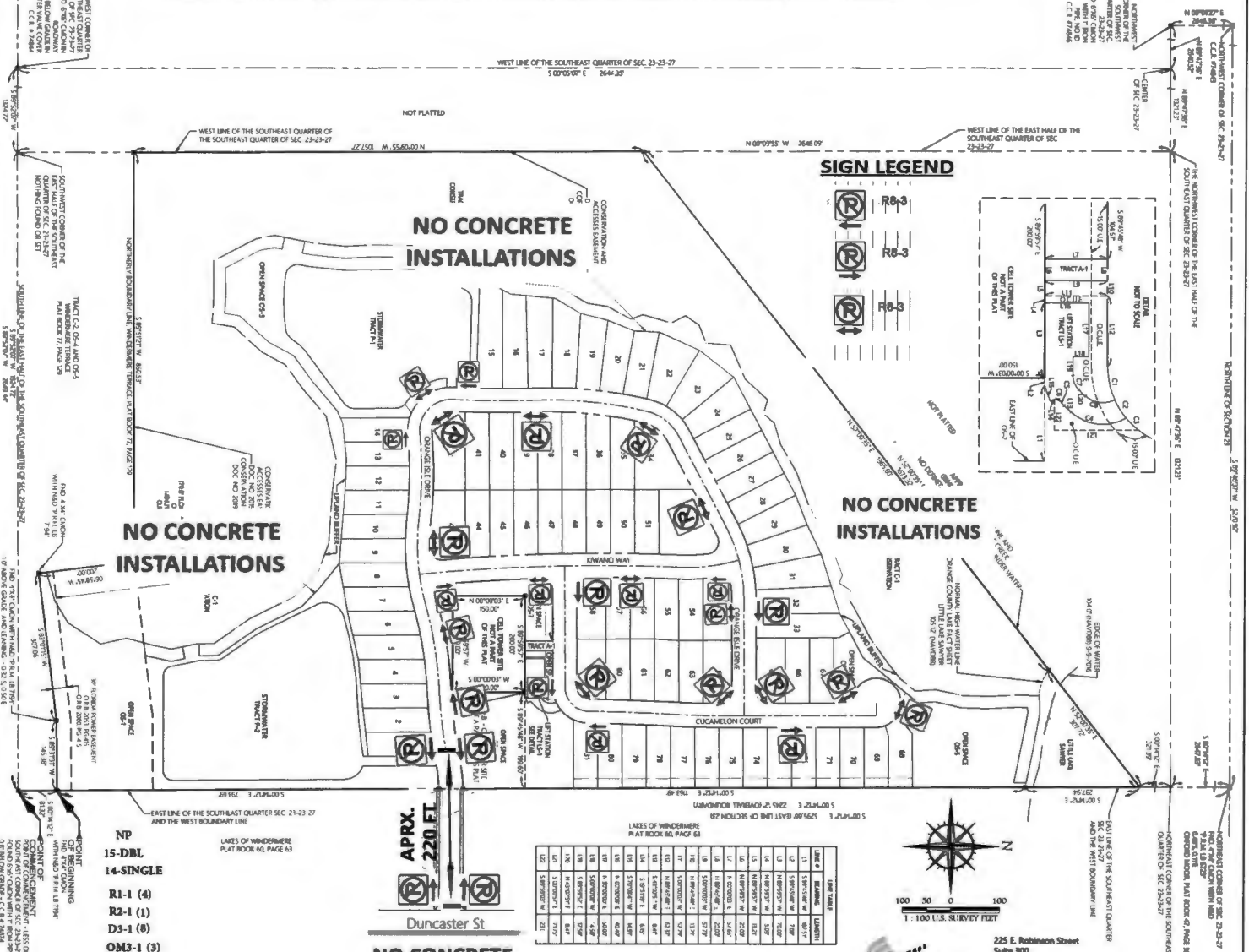
# SANCTUARY AT LAKES OF WINDERMERE

A PORTION OF THE SOUTHEAST QUARTER OF SECTION 23, TOWNSHIP 23 SOUTH, RANGE 27 EAST, ORANGE COUNTY, FLORIDA

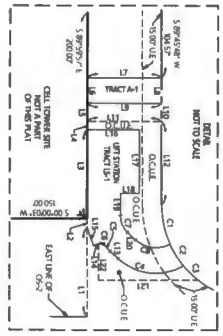
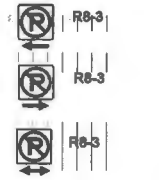
SHEET 1 OF 1

PLAT BOOK

PAGE



### SIGN LEGEND



**NO CONCRETE INSTALLATIONS**

**NO CONCRETE INSTALLATIONS**

**NO CONCRETE INSTALLATIONS**

**APRX. 220 FT**

**Duncaster St**

**NO CONCRETE INSTALLATIONS**

- NP**
- 15-DBL
  - 14-SINGLE
  - R1-1 (4)
  - R2-1 (1)
  - D3-1 (8)
  - OM3-1 (3)

LINE #	BEARING	LENGTH
L1	S 89°00'00" W	507.17
L2	S 89°00'00" W	750.71
L3	S 89°00'00" W	750.71
L4	S 89°00'00" W	750.71
L5	S 89°00'00" W	750.71
L6	S 89°00'00" W	750.71
L7	S 89°00'00" W	750.71
L8	S 89°00'00" W	750.71
L9	S 89°00'00" W	750.71
L10	S 89°00'00" W	750.71
L11	S 89°00'00" W	750.71
L12	S 89°00'00" W	750.71
L13	S 89°00'00" W	750.71
L14	S 89°00'00" W	750.71
L15	S 89°00'00" W	750.71
L16	S 89°00'00" W	750.71
L17	S 89°00'00" W	750.71
L18	S 89°00'00" W	750.71
L19	S 89°00'00" W	750.71
L20	S 89°00'00" W	750.71
L21	S 89°00'00" W	750.71
L22	S 89°00'00" W	750.71
L23	S 89°00'00" W	750.71
L24	S 89°00'00" W	750.71
L25	S 89°00'00" W	750.71
L26	S 89°00'00" W	750.71
L27	S 89°00'00" W	750.71
L28	S 89°00'00" W	750.71
L29	S 89°00'00" W	750.71
L30	S 89°00'00" W	750.71
L31	S 89°00'00" W	750.71
L32	S 89°00'00" W	750.71
L33	S 89°00'00" W	750.71
L34	S 89°00'00" W	750.71
L35	S 89°00'00" W	750.71
L36	S 89°00'00" W	750.71
L37	S 89°00'00" W	750.71
L38	S 89°00'00" W	750.71
L39	S 89°00'00" W	750.71
L40	S 89°00'00" W	750.71
L41	S 89°00'00" W	750.71
L42	S 89°00'00" W	750.71
L43	S 89°00'00" W	750.71
L44	S 89°00'00" W	750.71
L45	S 89°00'00" W	750.71
L46	S 89°00'00" W	750.71
L47	S 89°00'00" W	750.71
L48	S 89°00'00" W	750.71
L49	S 89°00'00" W	750.71
L50	S 89°00'00" W	750.71
L51	S 89°00'00" W	750.71
L52	S 89°00'00" W	750.71
L53	S 89°00'00" W	750.71
L54	S 89°00'00" W	750.71
L55	S 89°00'00" W	750.71
L56	S 89°00'00" W	750.71
L57	S 89°00'00" W	750.71
L58	S 89°00'00" W	750.71
L59	S 89°00'00" W	750.71
L60	S 89°00'00" W	750.71
L61	S 89°00'00" W	750.71
L62	S 89°00'00" W	750.71
L63	S 89°00'00" W	750.71
L64	S 89°00'00" W	750.71
L65	S 89°00'00" W	750.71
L66	S 89°00'00" W	750.71
L67	S 89°00'00" W	750.71
L68	S 89°00'00" W	750.71
L69	S 89°00'00" W	750.71
L70	S 89°00'00" W	750.71
L71	S 89°00'00" W	750.71
L72	S 89°00'00" W	750.71
L73	S 89°00'00" W	750.71
L74	S 89°00'00" W	750.71
L75	S 89°00'00" W	750.71
L76	S 89°00'00" W	750.71
L77	S 89°00'00" W	750.71
L78	S 89°00'00" W	750.71
L79	S 89°00'00" W	750.71
L80	S 89°00'00" W	750.71
L81	S 89°00'00" W	750.71
L82	S 89°00'00" W	750.71
L83	S 89°00'00" W	750.71

SHEET INDEX  
 SHEET 1 OF 9 - LEGAL DESCRIPTION, DEDICATION, NOTES, LEGEND  
 SHEET 2 OF 9 - OVERALL BOUNDARY  
 SHEETS 3 TO 9 OF 9 - BOUNDARY, LOTS AND TRACTS GEOMETRY



**vhb**

225 E. Robinson Street  
 Suite 300  
 Orlando, FL 32801  
 407.839.4006  
 Certificate of Authorization  
 Number FL #7153