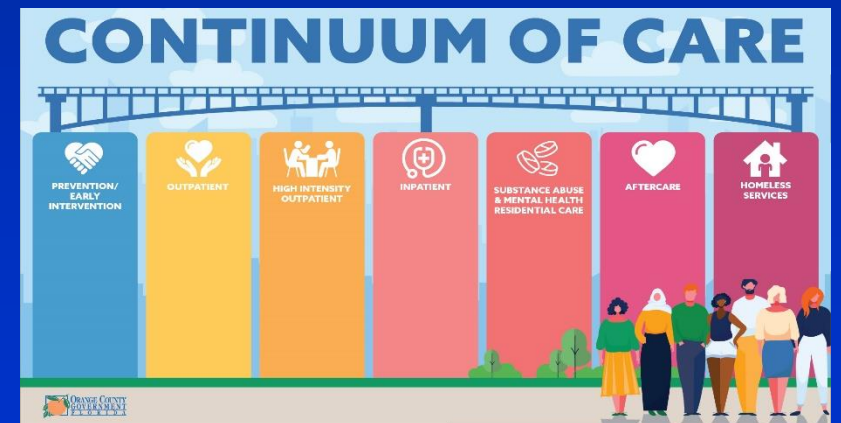


Orange County Mental and Behavioral Health System Gaps



May 18, 2021



Unequal access to health care, education, nutrition & safe housing

Marginalization & Oppression

Gang Violence

Homelessness

Every Crisis

Keep the Peace

Mass Incarceration & Criminal Injustice

Human Trafficking

School Security

Addiction

Domestic Violence

Generational Trauma and ACES*

Poverty

Mental Health Stigma

Community Violence

assisted living & residential facilities

Undiagnosed & Untreated Mental Illness

*ACES - Adverse Childhood Experiences

**FOSTER CARE
& ADOPTION
SERVICES**



**EDUCATION &
VOCATIONAL
SUPPORT**



**DIGNIFIED
ASSISTED
LIVING &
LONG TERM
RESIDENTIAL
FACILITIES**



**ACCESS TO
QUALITY
HEALTH CARE
& NUTRITION**



**BEHAVIORAL
HEALTH
SERVICES**



**LAW
ENFORCEMENT
& MENTAL
HEALTH
CO-RESPONSE**

*Keep
the
Peace*



**REFORMED
LAWS &
PRISON
SENTENCING**



**REFORMED
JAIL &
PRISON
PRACTICES**

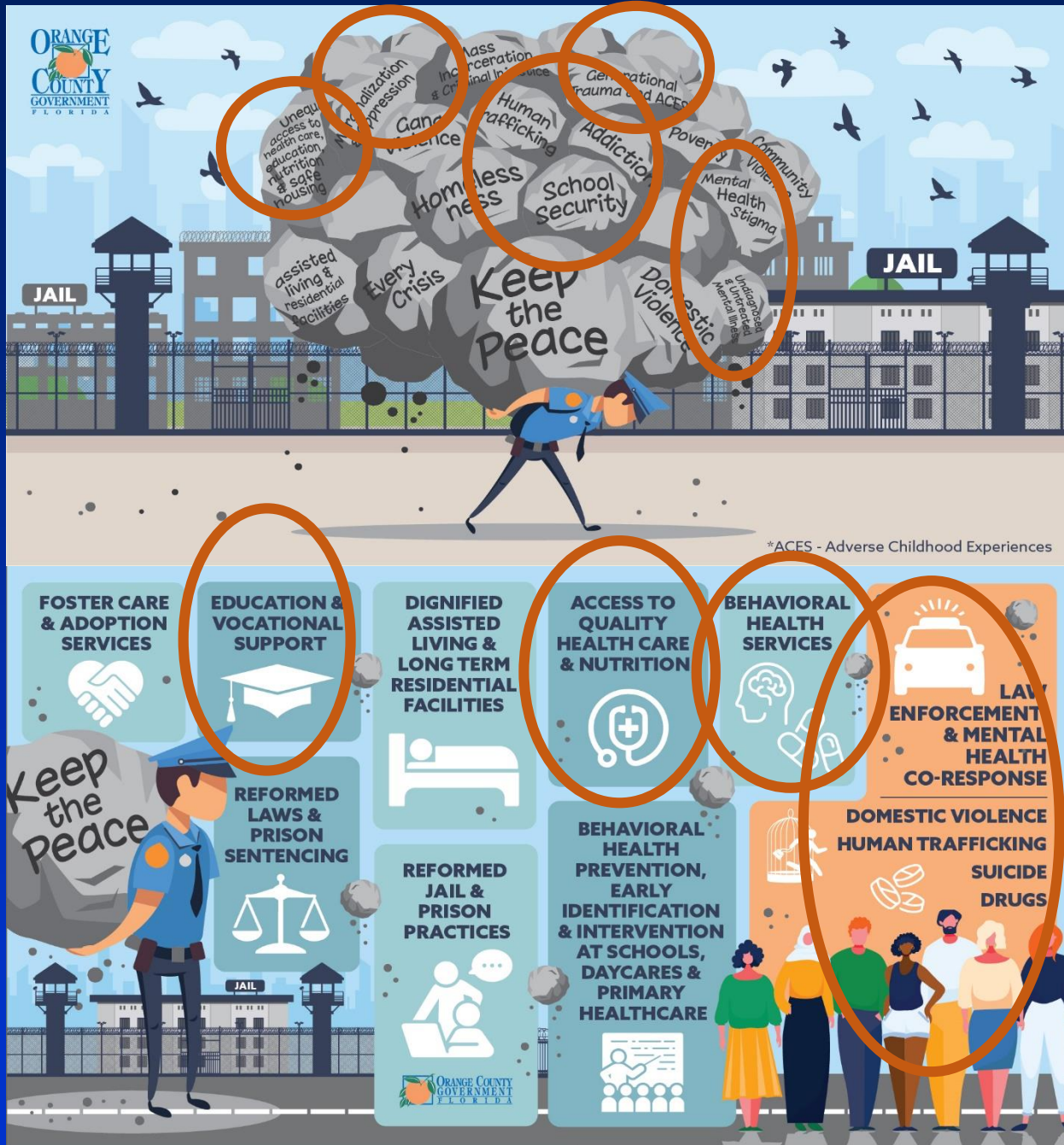


**BEHAVIORAL
HEALTH
PREVENTION,
EARLY
IDENTIFICATION
& INTERVENTION
AT SCHOOLS,
DAYCARES &
PRIMARY
HEALTHCARE**



**DOMESTIC VIOLENCE
HUMAN TRAFFICKING
SUICIDE
DRUGS**





Orange County Foundation

- Orange County Housing For All
- Mayor's Transportation Initiative
- Jail Diversion Committees
- CARES Funding for Social Services
- Eviction Diversion
- Neighborhood Centers for Families
- Primary Care Access Network

Mental Health and Homelessness Division Foundation



- Central Receiving Center
- Crisis Intervention Team Training (adults and youth)
- Wraparound Orange/ System of Care Initiative
- Family Support Navigation
- Youth Mental Health Commission
- Mobile Crisis
- Spirit Navigation Platform
- Breakthrough Pilot
- Multisystemic Therapy Psych
- Respite
- Functional Family Therapy
- Modular Approach to Therapy For Children
- Community-Wide Adverse Childhood Experiences Initiative
- Cultural and Linguistic Competency Training
- Spirit Expansion to Orange County Schools
- Orange Connects

CONTINUUM OF CARE



**PREVENTION/
EARLY
INTERVENTION**



OUTPATIENT



**HIGH INTENSITY
OUTPATIENT**



INPATIENT



**SUBSTANCE ABUSE
& MENTAL HEALTH
RESIDENTIAL CARE**



AFTERCARE

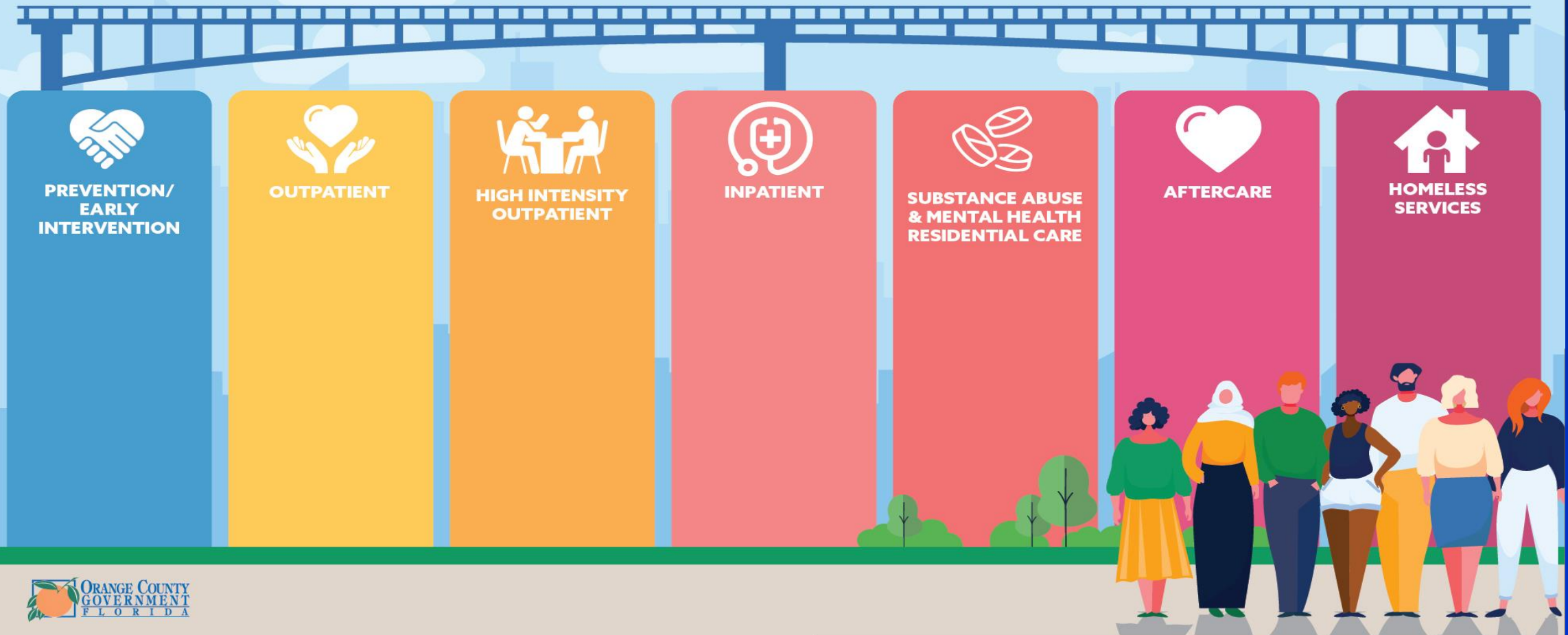


**HOMELESS
SERVICES**



Supporting Diverse Needs Through Diverse Means

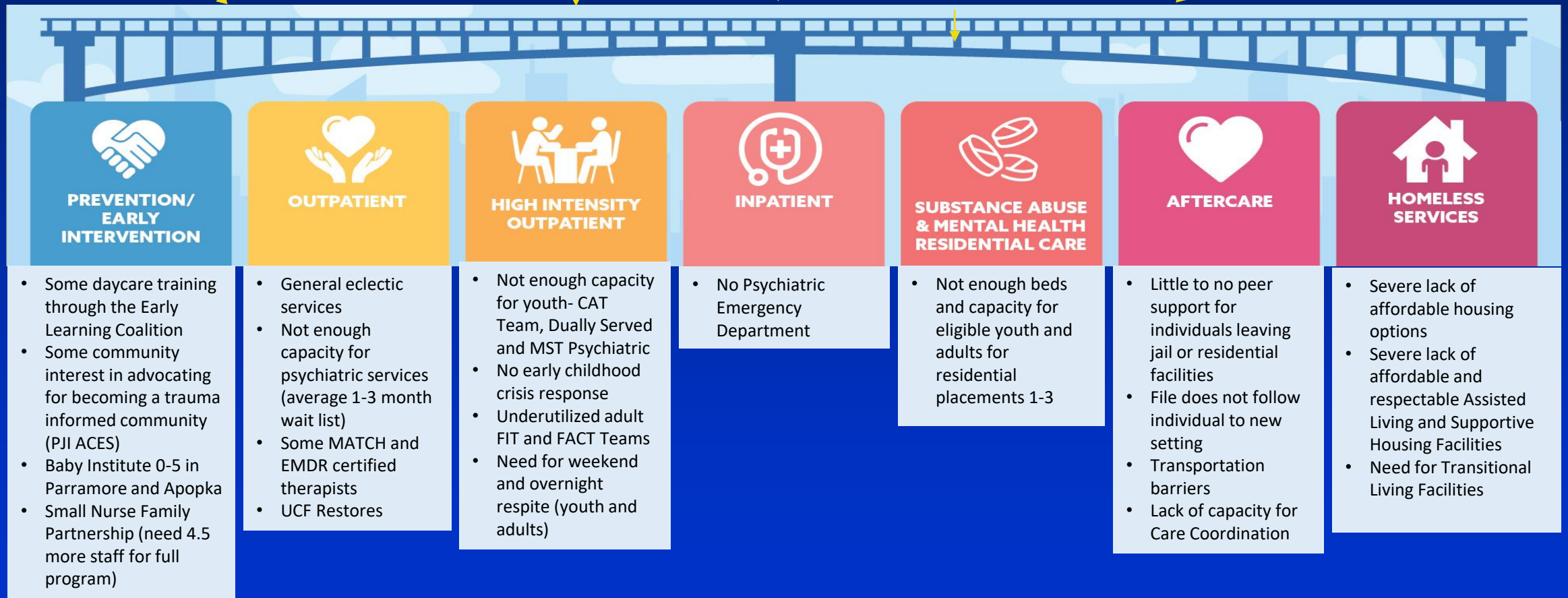
CONTINUUM OF CARE



Current System

CONTINUUM OF CARE

Disjointed Navigation



Mental Health and Homelessness Division Behavioral Health Funding: **\$10,030,812** /State (Central Florida Cares) Behavioral Health Funding: ***\$30,921.579**

*funds and individuals served reflect anyone seeking services in Orange County, not just residents

Current System



- Some daycare training through the Early Learning Coalition
- Some community interest in advocating for becoming a trauma informed community (PJI ACES)
- Baby Institute 0-5 in Parramore and Apopka
- Small Nurse Family Partnership (need 4.5 more staff for full program)

Current System



- General eclectic services
- Not enough capacity for psychiatric services (average 1-3 month waitlist)
- Some MATCH and EMDR certified therapists
- UCF Restores

Current System



- Not enough capacity for youth - CAT Team, Dually Served and MST Psychiatric
- No early childhood crisis response
- Underutilized adult FIT and FACT Teams
- Need for weekend and overnight respite (youth and adults)

Current System



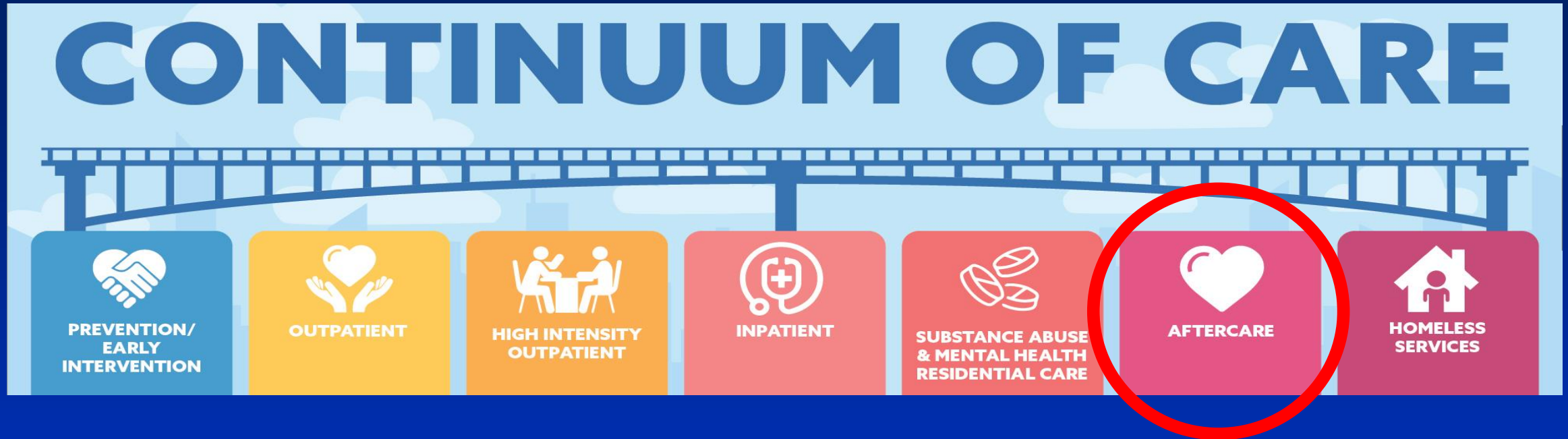
- **No Psychiatric Emergency Department**

Current System



- **Not enough beds and capacity for eligible youth and adults for residential placements 1-3**

Current System



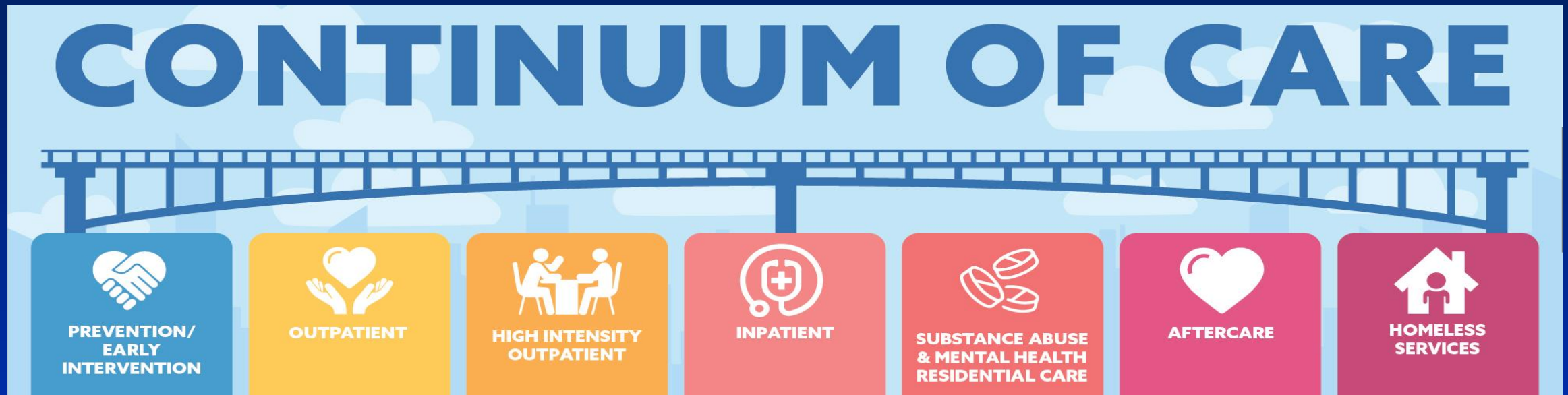
- Little to no peer support for individuals leaving jail or residential facilities
- File does not follow individual to new setting
- Transportation barriers
- Lack of capacity for Care Coordination

Current System



- Severe lack of affordable housing options
- Severe lack of affordable and respectable Assisted Living and Supportive Housing Facilities
- Need for Transitional Living Facilities

Current System



- **Mental Health and Homelessness Behavioral Health Funding: \$10,030,812**
(4,131 individuals and families served, approximately 10,000 impacted)
- **State (Central Florida Cares) Behavioral Health Funding: \$30,921,579***
(14,309 individuals and families served)

*funds and individuals served reflect anyone seeking services in Orange County, not just residents

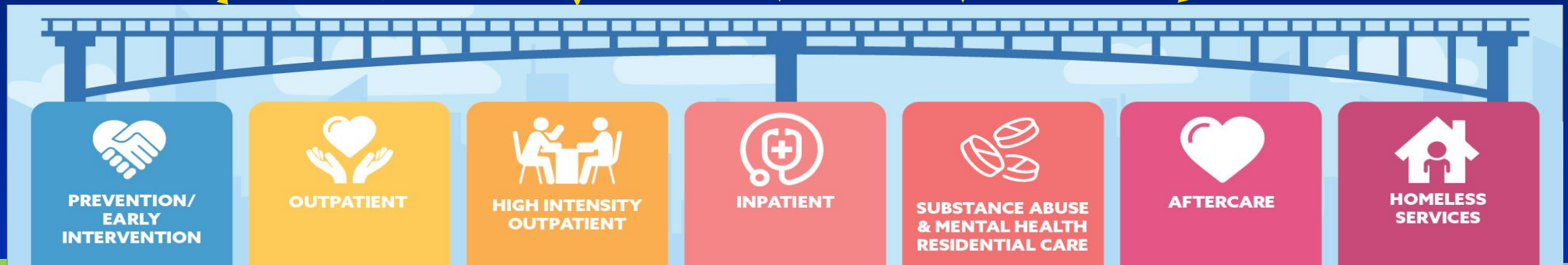
Needed System

CONTINUUM OF CARE

Providers Needs/Costs

Community Assessment-Driven Navigation

High Functioning Systems



Prevention/Early Intervention	Outpatient	High Intensity Outpatient	Inpatient	Substance Abuse & Mental Health Residential Care	Aftercare	Homeless Services
<ul style="list-style-type: none"> SAMHSA System of Care Expansion Grant \$1mil Add 4.5 positions to Nurse Family Partnership Program \$441k Peer Respite \$450k Caregiver overnight and weekend respite \$1mil CIT Expansion \$172k 24/7 Drop-In Centers with substance abuse mental health overlay \$900k Adult Mobile Crisis \$1mil Early Childhood Mental Health Consultation 300 daycares 	<ul style="list-style-type: none"> Wide spread training in evidence based practices to mental health providers \$1mil More psychiatric providers \$1mil-\$5mil Increased capacity for care coordination and case management \$680k Indigent Drug Program \$12k 	<ul style="list-style-type: none"> Additional teams for MST Psych \$630k, CAT \$750k and Dually Served \$500k Psychosocial Rehab \$2.2mil Psychosocial Rehab Assisted Outpatient Treatment \$750k Medication Assisted Treatment \$325k Adult Intensive Outpatient Services \$1mil 	<ul style="list-style-type: none"> Psychiatric Emergency Department \$330k 	<ul style="list-style-type: none"> Increased capacity for youth and adult residential units levels 1-3 \$2.6mil 	<ul style="list-style-type: none"> Peer Support \$455k Increased Care Coordination and Case Management \$680k 	<ul style="list-style-type: none"> 30,300 affordable and attainable Housing (refer to Housing for All 10 year plan- \$160mil over 10 years) Supportive Housing Assisted Living Facilities Transitional Living Facilities
= \$32mil	= \$2.7- \$6.7mil	= \$6.2mil	= \$330k	= \$2.6mil	= \$1.1mil	= \$?
TOTAL NEED: \$49mil						
<ul style="list-style-type: none"> - Substance Abuse, Family, Youth and General MH Peer Support - Trauma Center - Culturally and Linguistically Competent System - Consumer driven voice and choice - Expanded training and credentialing in high fidelity Evidence Based Practices - Data driven decision making - Federal to state level policy decisions/ Medicaid Expansion - Physical space to support needed services 						

Needed System



- SAMHSA System of Care Expansion Grant - \$1mil
- Add 4.5 positions to Nurse Family Partnership Program - \$441k
- Peer Respite - \$450k
- Caregiver overnight and weekend respite - \$1mil
- CIT Expansion - \$172k
- 24/7 Drop-In Centers with substance abuse mental health overlay - \$900k
- Adult Mobile Crisis - \$1mil
- Early Childhood Mental Health Consultation 300 daycares - \$27mil

= \$32mil

Needed System



- Wide spread training in evidence based practices to mental health providers - \$1mil
- More psychiatric providers - \$1-\$5mil
- Increased capacity for care coordination and case management - \$680k
- Indigent Drug Program - \$12k

= \$2.7- \$6.7mil

Needed System



- Additional teams for MST Psych \$630k, CAT \$750k and Dually Served \$500k
- Psychosocial Rehab - \$2.2mil
- Psychosocial Rehab Assisted Outpatient Treatment - \$750k
- Medication Assisted Treatment - \$325k
- Adult Intensive Outpatient Services - \$1mil

= \$6.2mil

Needed System



- Psychiatric Emergency Department \$330k

= \$330k

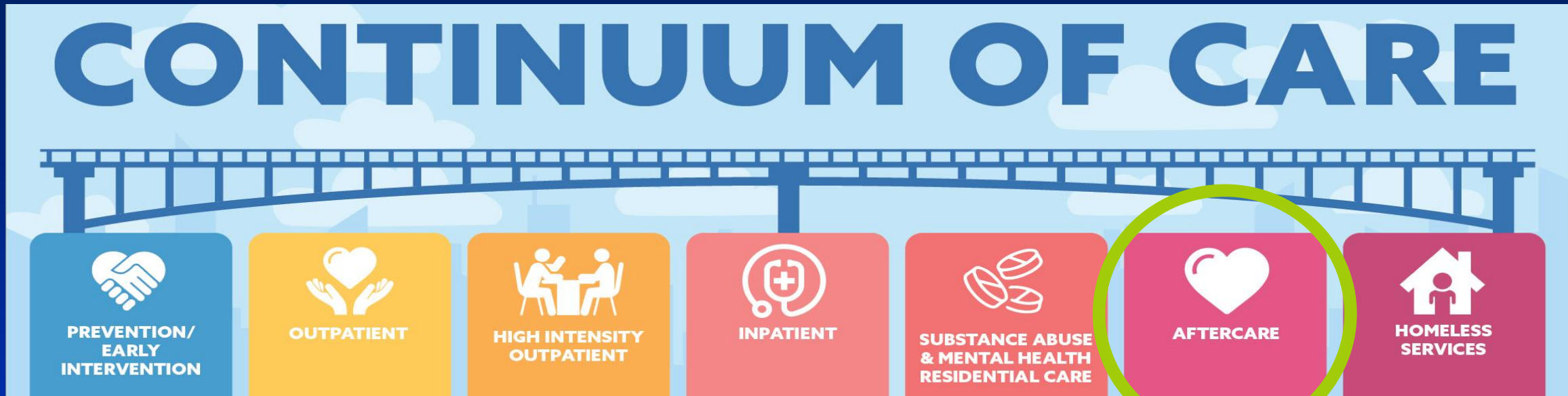
Needed System



- Increased capacity for youth and adult residential units levels 1-3 - \$2.6mil

= \$2.6mil

Needed System



- Peer Support - \$455k
- Increased Care Coordination and Case Management - \$680k

= \$1.1mil

Needed System



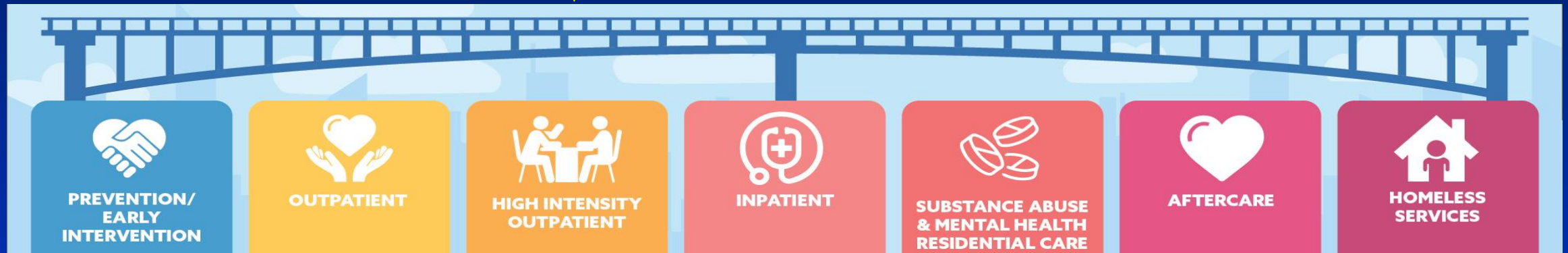
- 30,300 affordable and attainable Housing (Housing for All 10 year plan- \$160mil over 10 years)
- Supportive Housing
- Assisted Living Facilities
- Transitional Living Facilities

= \$?

Needed System

CONTINUUM OF CARE

Community Assessment-Driven Navigation



VALUES OF HIGH FUNCTIONING SYSTEMS

- Substance Abuse, Family, Youth and General Mental Health Peer Support
- Trauma Center
- Culturally and Linguistically Competent System
- Consumer driven voice and choice
- Expanded training/credentialing in high fidelity Evidence Based Practices
- Data driven decision making
- Federal to state level policy decisions/ Medicaid Expansion
- Physical space to support needed services

**TOTAL
NEED:
\$49mil**

Short Term Recommendations

1. Full time CIT Coordinator to train trainers, collect data and expand CIT Training (\$172k), Mindfulness Training (\$12k), CIT Echo (free) = \$184k total (600 additional first responders and corrections officers trained. Currently 150 are trained annually)
2. Adult Mobile Crisis = \$1mil total (new initiative)
3. Adult intensive outpatient (\$230k, new initiative to serve 24 people), Assisted Outpatient Treatment and Psychosocial Rehabilitation (\$750k, new initiative to serve 38 people), Medication Assisted Treatment (\$325k, expand to 25 non-incarcerated individuals) = \$1.3mil total and 87 people served
4. Evidenced Based Practices in outpatient services that support people staying in the community = \$1mil total (new initiative)

Short Term Recommendations

5. Increase capacity pre and post booking Peer Support = \$900k total (new initiative)
6. Drop-in Centers with Mental Health and Substance Abuse overlay = \$900k total (new initiative)
7. Psychiatric ED = \$330k total (new initiative)
8. Substance abuse and mental health residential services levels 1-3 = \$3.3mil total (63 additional people. Current capacity is 102)

SHORT TERM NEED: \$9mil



Long Term Recommendations

1. Affordable housing, supportive housing, assisted living and transitional living facilities = \$?
2. Prevention, early identification and intervention: disrupt the prenatal to prison pipeline
 - SAMSHA Grant Expansion = **\$1mil (new initiative to serve 150 families)**
 - Nurse Family Partnership = **\$441k (serve an additional 26 families, up from 26)**
 - Caregiver overnight respite = **\$1mil (new initiative)**
 - Early Childhood Consultation = **\$27mil (new initiative)**

LONG TERM NEED: \$29.4+mil



Heart of Florida United Way - Selection

- **Not a direct service provider - can provide an objective perspective**
- **Experienced in working with service providers, consumers and corporate partners**
- **Experienced in supporting Orange County through times of crisis:**
 - **Operation of Orlando United Assistance Center after the Pulse Shooting**
 - **Assist evacuees from Puerto Rico after Hurricane Maria**



Heart of Florida United Way – Scope of Work

- Convene the Mayor's stakeholder group to vet and review Orange County Gaps Analysis
- Oversee ongoing stakeholder involvement
- Identify funding duplications, opportunities and service funding gaps from the perspective of alignment
- Ensure community groups create plan
- Hire a consultant to validate findings and work with community groups
- Deliver a strategic plan to create a high performing behavioral health system that includes financial sustainability



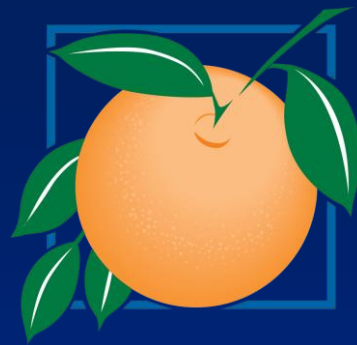
Heart of Florida United Way – Schedule/Budget

- **Schedule: 8 months**
- **Budget: \$315,480**
- **Contract will be funded through the American Rescue Plan**

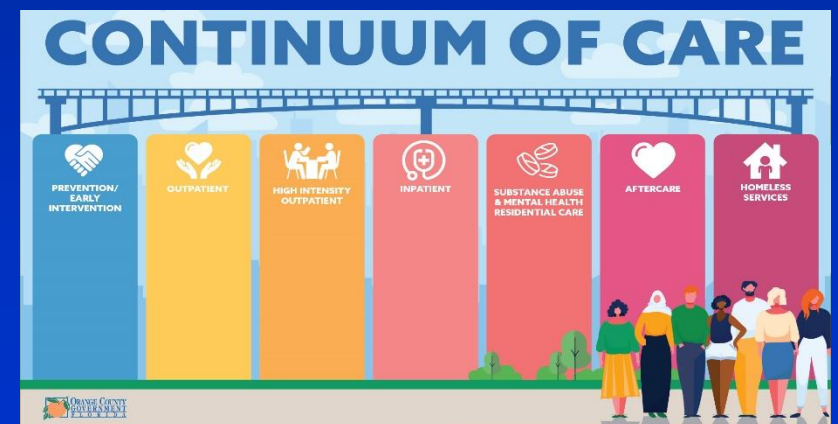


Requested Action

Approval of the Scope of Work Proposal and Funding in the amount of \$315,480 for the Heart of Florida United Way to undertake a Mental and Behavioral Health System of Care Community Analysis using, in part, Orange County's Mental Health and Homelessness Division's *Continuum of Care Report* and authorization for the County Administrator to execute a contract with Heart of Florida United Way.



Orange County Mental and Behavioral Health System Gaps



May 18, 2021