



Interoffice Memorandum

May 6, 2019

TO: Mayor Jerry L. Demings
and Board of County Commissioners

FROM: Raymond E. Hanson, P.E., Director
Utilities Department

A handwritten signature in black ink, appearing to read "R. Hanson", is written over the "FROM:" field.

**SUBJECT: BCC AGENDA ITEM – Consent Agenda
May 21, 2019 BCC Meeting
Joint Participation Agreement between City of Orlando and Orange County
Regarding Construction of a County Water Main and County Reclaimed
Water Main (Narcoossee Road Expansion)
Contact Person: J. Andres Salcedo, P. E., Assistant Director
Utilities Engineering Division
Utilities Department
407-254-9719**

This consent agenda item requests authorization from the Board for the approval of the Joint Participation Agreement between the City of Orlando ("City") and Orange County ("County") regarding the Narcoossee Road Expansion. This reimbursement agreement allows the City to build the County water main and County reclaimed water main with the City road expansion project. The County will reimburse the City for construction costs of the water main and reclaimed water main.

The City will construct improvements to Narcoossee Road from State Road 417 (Greenway) to State Road 528 (Beachline Expressway) to expand the four-lane section to a six-lane section (the "Road Project"). Orange County is constructing two transmission pipelines consisting of one 36-inch potable water pipeline and one 24-inch reclaimed water pipeline from Boggy Creek Road to just east of the Greenway on Moss Park Road (the "County Project").

A portion of the County Project is within the Narcoossee Road right-of-way and within the Road Project to be constructed by the City. Construction of the Road Project and the County Project will occur under one construction contract administered by the City to minimize public impacts. It is also more economical for the City and County to incorporate construction of this portion of the County Project into the Road Project.

Orange County has agreed to reimburse the City for the construction bid estimate of \$4,983,696 plus a 12% contingency. Thus, the County agrees to reimburse the City a not-to-exceed amount of \$5,581,740.

Orange County Attorney's Office staff have reviewed the agreement and find it acceptable as to form. Utilities Department staff recommends approval.

Action Requested: Approval and execution of Joint Participation Agreement between City of Orlando and Orange County Regarding Construction of a County Water Main and County Reclaimed Water Main (Narcoossee Road Expansion) by and between Orange County and the City of Orlando, Florida, in an amount not-to-exceed \$5,581,740 for the construction of a 36-inch water main and 24-inch reclaimed water main.

District 4.

**JOINT PARTICIPATION AGREEMENT
BETWEEN CITY OF ORLANDO AND ORANGE COUNTY
REGARDING
CONSTRUCTION OF A COUNTY WATER MAIN
AND COUNTY RECLAIMED WATER MAIN

(NARCOOSSEE ROAD EXPANSION)**

THIS JOINT PARTICIPATION AGREEMENT (the "Agreement"), is made and entered into on the date of last execution by and between **Orange County**, a charter county and political subdivision of the State of Florida (the "County"), and the **City of Orlando, Florida**, a municipal corporation existing under the laws of the State of Florida (the "City"). In this Agreement, the County and the City may be referred to individually as a "Party" or collectively as the "Parties."

WHEREAS, the City is constructing improvements to Narcoossee Road from State Road 417 (Greeneway) to State Road 528 (Beachline Expressway) to expand the four-lane section to a six-lane section (the "Road Project"); and

WHEREAS, the County is constructing two transmission pipelines consisting of one 36-inch potable water pipeline and one 24-inch reclaimed water pipeline as shown on **Exhibit "A"** (the "County Project"); and

WHEREAS, a portion of the County Project, which is referred to as the "JPA Segment," is within the Narcoossee Road right-of-way and within the Road Project as depicted in **Exhibit "B,"** attached to and made a part of this Agreement by reference; and

WHEREAS, construction of the Road Project and the JPA Segment will occur contemporaneously and, in order to facilitate construction of both the Road Project and the JPA Segment and reduce interference between contractors, the Parties agree that it would be more economical and expeditious for the City to incorporate construction of the JPA Segment into the Road Project; and

WHEREAS, the City and the County have agreed to share payment of the costs of the Road Project and the JPA Segment in the proportions shown on **Exhibit "C"** attached to and made a part of this Agreement by reference; and

WHEREAS, the City and the County have agreed to share payment of the actual costs for the Road Project and the JPA Segment in proportion to the estimated costs shown on **Exhibit "C"**; and

WHEREAS, the County retained a consultant (the "Design Consultant") to provide design services for the JPA Segment. The consultant has completed the design for the County Project, and produced a subset of the construction plans and drawings for the JPA Segment referred to herein as the "JPA Segment Design Package." The City incorporated the JPA Segment into the City's bid documents for the Road Project; and

WHEREAS, through the County's procurement procedures, the County has pre-qualified certain contractors for the County Project, and the Parties agree that the City will place a condition in its bid documents to require one of the County pre-qualified contractors to be used for construction of the JPA Segment; and

WHEREAS, the City will reimburse the County for the cost of design services provided by the County's Design Consultant to prepare the JPA Segment Design Package, and the County will reimburse the City for the City's cost to construct the JPA Segment.

NOW, THEREFORE, in consideration of the mutual covenants contained in this Agreement, the receipt and sufficiency of which is acknowledged by the Parties, the Parties agree as follows:

1. The above recitals are true and correct, form a material part of this Agreement, and are incorporated in this Agreement by this reference.
2. The County's Design Consultant has prepared the JPA Segment Design Package at a cost of \$28,722.17. The County has submitted to the City the JPA Segment Design Package consisting of County-approved final construction plans and specifications for the JPA Segment. The City approved the JPA Segment Design Package and incorporated the JPA Segment Design Package into the bid documents for the Road Project, and will be responsible for the construction of the JPA Segment.

In the event additional engineering services for the JPA Segment are necessary, the County shall provide the additional engineering services as a part of its responsibilities relating to preparation of the JPA Segment Design Package.

3. The City incorporated the JPA Segment Design Package into the bid documents for the Road Project. The County will submit a request for payment (the "Request") to the City listing the costs incurred by the County for preparation of the JPA Segment Design Package. The County will submit all necessary supporting documentation with the Request, including invoices from the County's Design Consultant. The City may request additional supporting documentation necessary to process and approve the Request. The City will review and either approve or disapprove the County's Request within 15 days after receipt, unless the City requests additional information, in which case the 15-day period will run from receipt of the requested additional information. The City and the County will meet to discuss the City's concerns or disapproval of the Request within 15 days after the City's response, if the County's Request is disapproved. If the Parties do not reach resolution of any issue in dispute relating to the Request within 30 days after the date of the meeting, then either Party may exercise the dispute resolution procedure outlined in Section 31 of this Agreement. Within 30 days of the City's review and approval of the Request, (or resolution of the dispute under Section 31), the City will pay the Request in an amount not to exceed \$28,722.17 plus a 10% contingency of \$2,872.22 for a total of \$31,594.39.
4. The JPA Segment Design Package, approved by the City and the County and incorporated in the bid documents, will be retained by the Engineering Division of the Orange County Utilities Department and a copy will be retained by the City's Public Works Department. The bid package for the Road Project will be retained by the Engineering Division of the Orange County Utilities Department and a copy shall be retained by the City's Public Works Department.
5. The City shall be responsible to acquire all permits as required from the City, the County, and state and federal agencies with jurisdiction over the construction of the Road Project and the JPA Segment unless the permit is typically acquired by the contractor as part of the contractor's work. The County shall cooperate with the City to facilitate the issuance of any necessary County permits.
6. The City and the County agree that the City will solicit bids for both the Road Project construction and the JPA Segment construction as one bid package (hereinafter the construction contract shall be referred to as the "Contract").
7. The City will require that the contractor for construction of the Road Project utilize qualification criteria approved by the City and County to select a contractor to construct the JPA Segment.

In consideration for the City's agreement to do so, the County will reimburse the City for all costs associated with construction of the JPA Segment. The estimated cost for the JPA Segment is \$4,323,960 as shown on **Exhibit "C."** Prior to awarding the Contract, the City will provide the County with a copy of the bid

item for the JPA Segment (the "Bid") from the successful bidder as determined by the City. The County will review and either approve or disapprove the Bid and notify the City in writing of its approval or disapproval within 10 days of the County's receipt of the Bid. In the event that the County notifies the City within 10 days of the County's receipt of the Bid that the Bid is not approved, the City may award the Contract for the Road Project only, excluding the JPA Segment. In the event that the County does not approve the Bid, and the City opts to award the Contract for the Road Project only, then this Agreement automatically terminates, the County must pay for the design costs of the JPA Segment Design Package and the Parties are relieved of any further liability under this Agreement. If the City does not receive written notification from the County within the above-referenced 10-day period, the Parties agree that the County's failure to provide notice shall constitute approval of the Bid by the County to the same effect as if the County provided written notification of approval.

8. In the event the County approves the Bid, within 90 days of the City's notification to the County for payment, the County will pay to the City an amount equal to the amount of the Bid (the "Bid Funds"), plus an additional 12 percent to serve as a contingency fund (the "Contingency Funds"). The Bid Funds and Contingency Funds are collectively referred to herein as the "Funds." The City will deposit and maintain the Funds paid by the County into a separate escrow account (the "Escrow Account") and will distribute the Funds as provided in this Agreement. The City shall maintain records of the Escrow Account consistent with the City's policies and procedures for City funds. The County may, at any time, upon five days notice, inspect all records maintained by the City related to the Escrow Account.
9. The City shall use the Funds in the Escrow Account to make payments to the contractor for the JPA Segment. The City will make payments pursuant to its payment procedures as set forth in the Contract. The Contract shall be a unit price contract. The City will use the Contingency Funds to cover the cost of any increase in the contract price for the JPA Segment construction and at closeout. Prior to making any payment to the contractor from the Contingency Funds, the City will obtain approval from the County (said approval not to be unreasonably withheld), which the County will provide within seven days after receiving the payment information along with all supporting documentation from the City. If the County disapproves of the payment, then the Parties may exercise the dispute resolution procedure outlined in this Agreement. The City shall not approve any costs in excess of the contract price of the JPA Segment, including the Contingency Funds, without an amendment to this Agreement executed by the Parties. In such an event, the County will pay to the City the additional costs within 90 days after the execution of the amendment approving the additional costs. These additional costs will be treated as Contingency Funds under this Agreement. In consideration for the City administering and managing the

construction of the JPA Segment, the County shall not receive any interest earnings that may accrue on the Funds while being held by the City.

10. The Parties acknowledge that there may be unexpected site conditions or other conditions requiring changes or modifications to the JPA Segment Design Package or construction, which may cause an increase in the contract price. During the course of the JPA Segment construction, if the County or the City observe, or otherwise become aware of, any defects, conflicts, or necessary changes to the JPA Segment Design Package or construction, the Party must immediately notify the other Party of such defects, conflicts, or necessary changes. The County and the City agree that time is of the essence in making any decisions, interpretations or changes with respect to design, materials, and other matters pertinent to the work covered by the Contract so as to not materially delay the work of the contractor. Based on the above, in the event either Party determines that a change is necessary to the Contract in order to complete the JPA Segment, the Party shall provide such proposed change to the other Party for review and approval, which approval shall not be unreasonably withheld as defined in Section 32. Upon approval of such change by both Parties, the City shall process a change order with the contractor. In the event the proposed change order is not approved by the County, the City may, in its sole reasonable discretion, process a change order with the contractor and proceed to resolve its dispute with the County under Section 31 of this Agreement. In the event the County refuses to approve a proposed change order and in accordance with the County's refusal, the City fails to process the change order with the contractor, the County will release the City from all liability or damages associated with the City's failure to process the change order. If the City does not receive written notification from the County within 10 days from the County's receipt of the proposed change order, the County's failure to provide notice will constitute acceptance of the proposed change order to the same effect as if the County provided written notification of acceptance. If the cost of the change order (approved by both Parties) causes the contract price plus Contingency Funds to be exceeded, the change order must be approved by formal amendment to this Agreement.
11. Notwithstanding any provisions to the contrary in this Agreement, the City shall pay to the contractor all of the amounts to which it is contractually and legally obligated to pay for the JPA Segment. Any such amounts paid to the contractor for JPA Segment shall be deducted from the Escrow Account.
12. All inspections related to the JPA Segment shall be the responsibility of the City. The County shall have the right to inspect the JPA Segment, at any time, to determine if it is in conformance with the JPA Segment Design Package. The County must notify the City of any deviations from the JPA Segment Design Package discovered by the County, and upon notification, the City must require

the contractor to remedy all identified deficiencies. The City must also require the contractor to remedy any deficiencies of which the City has knowledge. Prior to the City making payments to the contractor for any portion of the JPA Segment work, the City will provide notice to the County of the City's intent to make a payment for certain work performed and the County will have seven days, after said notice, to inspect and approve the work. If the County fails to inspect the work within the seven-day period, the work will be deemed approved by the County. The City will only make final payment for the JPA Segment after the contractor has corrected all discrepancies identified by the City and the County between the construction and the JPA Segment Design Package including approved change orders.

13. The Contract shall require the contractor to maintain workers' compensation and general liability insurance, and must require the contractor to include the County as an additional insured on its general liability insurance for the duration of the JPA Segment work.
14. The contractor must provide a Performance Bond and Payment Bond in accordance with the provisions of §255.05, Florida Statutes, in a principal amount sufficient to cover the amount of the Contract and any change orders thereto. The County must be named as an additional insured party on the Performance and Payment Bonds with respect to the JPA Segment.
15. Within 30 days after completion of the JPA Segment and final payment to the contractor for the JPA Segment, the City must provide the County with an accounting of the Funds expended and return any unexpended Funds in the Escrow Account to the County.
16. The City shall obtain from the contractor a written one-year warranty stating that all JPA Segment work is free of defects for one year from the date of substantial completion of the Contract. Within 15 days of contractor receipt of final payment by the City for the Contract, the City must assign such warranty for the JPA Segment construction to the County.
17. Upon completion of the JPA Segment, the County's inspection and approval of the completed JPA Segment, and transfer of all JPA Segment-related warranties to the County, the County will be responsible for maintenance and operation of the JPA Segment, in perpetuity and the City will have no further liability with respect to the completed JPA Segment.
18. The Contract must require the contractor to provide a Certificate of Substantial Completion to the City and the County for the JPA Segment and to submit signed and sealed record drawing construction plans ("Record Drawings") for the JPA Segment to the County, both within 60 days of final completion of the Road

Project. The Record Drawings of the JPA Segment must conform to the JPA Segment Design Package, as may be amended by County-approved change orders.

19. Subject to §725.06, Florida Statutes, and with respect to the JPA Segment, the City shall require the contractor to indemnify and hold harmless the County for any intentional misconduct or any negligent action or omission of the contractor, its subcontractors, suppliers and anyone for whom the contractor is responsible.
20. Each Party agrees to defend, indemnify and hold harmless the other Party, its officials, and employees from all claims, actions, losses, suits, judgments, fines, liabilities, costs, and expenses (including attorney fees) to the extent caused by its negligent acts or omissions, or those of its officials and employees acting within the scope of their employment, or arising out of or resulting from the indemnifying party's negligent performance under this Agreement. Nothing contained in this Agreement shall constitute a waiver of the grant of sovereign immunity or the provisions of §768.28, Florida Statutes, or a waiver of the limits of liability referenced therein. The provisions of this Section 20 do not constitute an agreement by either Party to assume any liability for, or obligation with respect to, the acts, omissions, and/or negligence of the other Party, its officials, and employees. Nothing in this Agreement inures to the benefit of a third party to allow a claim otherwise barred by sovereign immunity or other operation of law.
21. This Agreement constitutes the entire agreement between the Parties and supersedes and replaces all prior agreements or understandings, written or oral, relating to the matters set forth in this Agreement. Any changes to this Agreement must be made in writing and signed by both Parties.
22. All notices to be given to the Parties must be in writing and must be given by hand delivery or United States mail, first class postage prepaid, addressed as follows:

COUNTY: Director
Orange County Utilities
9150 Curry Ford Road
Orlando, Florida 32825-7600

With copy to: Orange County
c/o County Administrator
201 South Rosalind Avenue, 5th Floor
P.O. Box 1393
Orlando, FL 32802-1393

CITY: City of Orlando
Public Works Department, Director
400 South Orange Avenue
Orlando, FL 32801-3360

23. The validity, interpretation, and effect of this Agreement shall be in accordance with and governed by the laws of the State of Florida. Both Parties acknowledge that each was actively involved in the negotiation and drafting of this Agreement and that no law or rule of construction shall be raised or used in which the provisions of this Agreement shall be construed in favor of or against either Party because one is deemed to be the author thereof. In the event any provision of this Agreement is determined to be unenforceable or invalid, such unenforceability or invalidity will not affect the remaining provisions of the Agreement, which will remain in full force and effect. To that end, this Agreement is declared severable.
24. Time is of the essence of this Agreement.
25. There are no third-party beneficiaries to this Agreement, and no rights of action for third parties are intended or implied in this Agreement.
26. Venue for any actions initiated under or in connection with this Agreement will be in the circuit court for the Ninth Judicial Circuit of Florida in Orange County.
27. This Agreement may not be assigned, and any purported assignment will be void and of no effect.
28. The effective date of this Agreement is the date when the last of the County and the City has properly executed this Agreement as determined by the dates set forth immediately below the respective signatures of the County and the City (the "Effective Date").
29. In performing pursuant to this Agreement, each Party will abide by the respective statutes, rules, ordinances, and regulations pertaining to, or regulating, the acts of such Party.
30. The Parties expressly waive their respective rights to sue for damages of any type of breach of, or default under, this Agreement by the other Party. The Parties expressly agree that each will bear the cost of its own attorney's fees for any action arising out of or in connection with this Agreement. The Parties waive their respective rights to a jury trial.
31. All claims, disputes and other matters in question between the Parties arising out of, or relating to, this Agreement or its performance or breach (a "Dispute") will

be resolved in the following order: (a) good-faith negotiation, (b) mediation, and then (c) judicial resolution. The process of "good-faith negotiation" requires each Party to set out in writing to the other its reason(s) for adopting a specific conclusion or for selecting a particular course of action, together with the sequence of subordinate facts leading to the conclusion or course of action. The good-faith negotiations will include at least one meeting of representatives of the Parties. The Party-representative must have authority to resolve the Dispute.

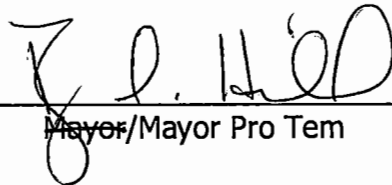
32. In those instances in this Agreement in which a Party's approval, consent or satisfaction is required and a time period is not specified, then it shall be implied that such action shall be exercised in a reasonable manner and within a reasonable time frame.
33. The term of this Agreement shall be five years from the Effective Date as that term is defined in Section 28 of this Agreement. The County's goal is to have the JPA Segment complete within two-and-one-half (2.5) years from the Effective Date. Upon the default of a Party under the terms of this Agreement and a reasonable opportunity to cure, the other Party may terminate this Agreement upon written notice without liability to the defaulting Party, except as otherwise provided herein. Prior to awarding the Contract, either Party may terminate this Agreement for convenience without liability to the other Party, except as otherwise provided herein. If the City terminates the Agreement for convenience, or the County terminates the Agreement upon default of the City, then the City must reimburse the County for the cost of the JPA Segment Design Package in an amount not to exceed \$28,722.17. If the County terminates the Agreement for convenience, or the City terminates the Agreement upon default of the County, the County must pay for the design costs of the JPA Segment Design Package.

[Signatures Begin on the Following Page]

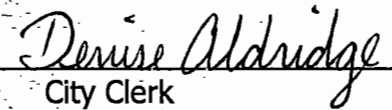
IN WITNESS WHEREOF, the City and the County have caused this Agreement to be duly executed by their respective duly authorized representatives on the dates set forth below.

CITY OF ORLANDO, FLORIDA

(SEAL)

By: 
Mayor/Mayor Pro Tem

Attest:

By: 
City Clerk

Date: APRIL 22, 2019

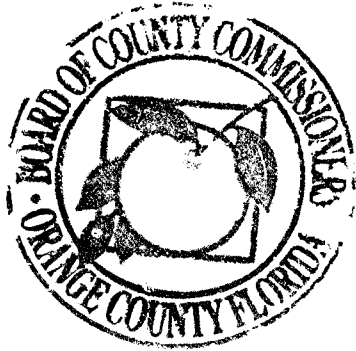
The form of execution of the foregoing contract is hereby approved:

Approved as to Form and Legality for
The Use and Reliance of the City of
Orlando, only

4/12, 2019


Chief Assistant City Attorney

City Council Meeting: 4-22-19
Item: I-3 Documentary: 190422F03



ORANGE COUNTY, FLORIDA

By: Board of County Commissioners

By: *Jerry L. Demings*
By *Jerry L. Demings*
Orange County Mayor

Date: *21 May 19*

ATTEST: Phil Diamond, CPA, County Comptroller
As Clerk to the Board of County Commissioners

By: *Katie Brink*
Deputy Clerk
BCC Meeting May 21, 2019
Utilities Consent Item 01

Exhibit A - County Project

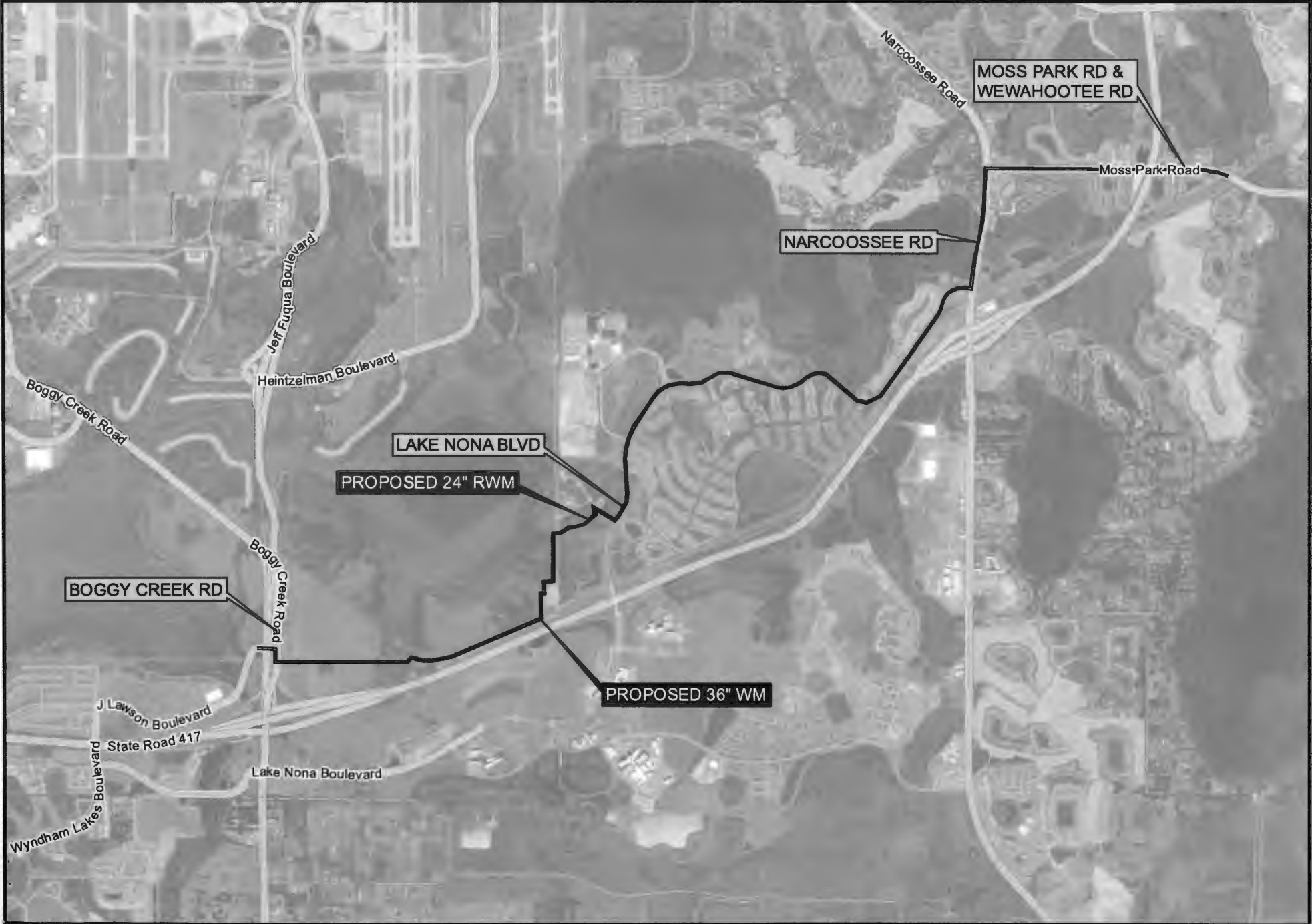


Exhibit B - JPA Segment

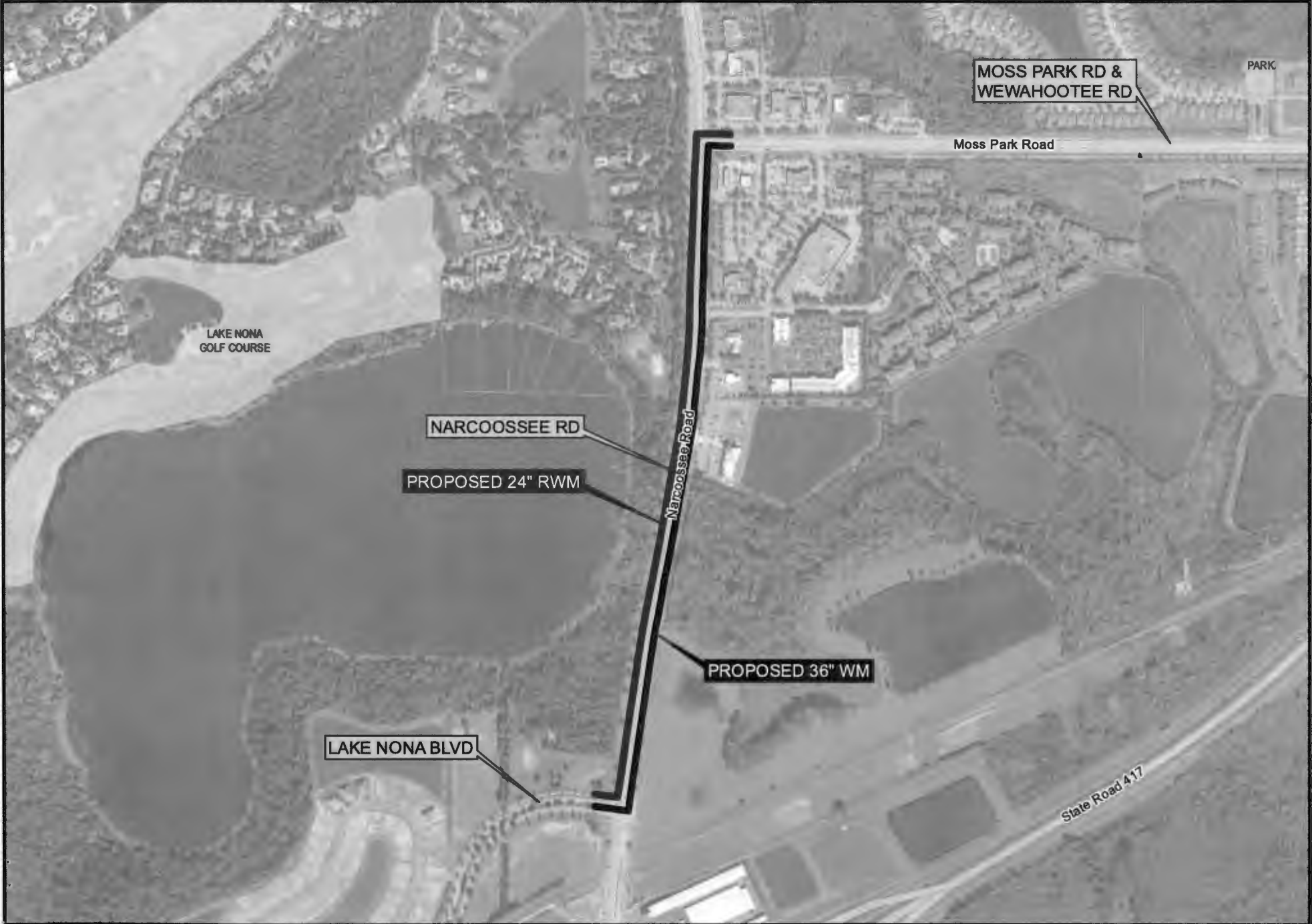


Exhibit C

Estimated Costs of Road Project and JPA Segment

ITEM NO.	UNIT	DESCRIPTION	ROADWAY QTY	ROADWAY EXTENDED COST	BIKE TRAIL QTY	BIKE TRAIL EXTENDED COST	CITY WATER RECLAMATION QTY	CITY WATER RECLAMATION EXTENDED COST	ORANGE COUNTY UTILITIES QTY	ORANGE COUNTY UTILITIES EXTENDED COST	TOTAL QUANTITY	UNIT PRICE	TOTAL
10.110.110	LS	MOBILIZATION AND DEMOBILIZATION	SHARED	\$ 2,077,000			SHARED	\$ 837,185	SHARED	\$ 488,301	1	\$ 3,382,541.00	\$ 3,382,541.00
10.110.111	LS	GENERAL REQUIREMENTS	SHARED	\$ 100,000			SHARED	\$ 53,845	SHARED	\$ 80,000	1	\$ 218,745.00	\$ 218,745.00
10.110.112	EA	PROJECT IDENTIFICATION SIGN	SHARED	\$ 2,148			SHARED	\$ 880	SHARED	\$ 484	3	\$ 1,188.00	\$ 3,488.00
10.180.110	LS	PUBLIC INFORMATION OFFICER	SHARED	\$ 100,498			SHARED	\$ 44,117	SHARED	\$ 24,878	1	\$ 178,251.00	\$ 178,251.00
102-1	LS	MAINTENANCE OF TRAFFIC	SHARED	\$ 888,888			SHARED	\$ 283,498	SHARED	\$ 147,378	1	\$ 1,064,501.00	\$ 1,064,501.00
102-1BR	AL	ALLOWANCE - MAINTENANCE OF TRAFFIC FOR INCIDENTAL BASE REPAIR - DO NOT BID	1	\$ 180,000				\$ -		\$ -	1	\$ 180,000.00	\$ 180,000.00
104-14	LS	PREVENTION CONTROL & ABATEMENT OF EROSION & WATER POLLUTION	SHARED	\$ 233,339			SHARED	\$ 88,888	SHARED	\$ 80,943	1	\$ 363,831.00	\$ 363,831.00
107-1	AC	LITTER REMOVAL	1,890	\$ 65,843				\$ -		\$ -	1,890	\$ 51.25	\$ 55,843.00
107-2	AC	MOWING	891	\$ 82,787				\$ -		\$ -	891	\$ 83.50	\$ 82,787.00
110-1-1	LS	CLEARING & GRUBBING (22 AC.)	SHARED	\$ 89,782			SHARED	\$ 40,188	SHARED	\$ -	23,478	\$ 162,368.00	\$ 162,368.00
110-4-10	SY	REMOVAL OF EXISTING CONCRETE	0,848	\$ 128,852	4,718	\$ 80,155		\$ -		\$ -	14,566	\$ 12.75	\$ 185,716.50
120-1	CY	REGULAR EXCAVATION	38,831	\$ 428,972	1,495	\$ 16,920		\$ -		\$ -	40,318	\$ 11.05	\$ 445,491.80
120-6	CY	TOTAL EMBANKMENT	118	\$ 87	1,572	\$ 7,546		\$ -		\$ -	1,688	\$ 4.80	\$ 8,102.40
180-4	SY	TYPE B STABILIZATION	68,488	\$ 488,191	12,856	\$ 100,280		\$ -		\$ -	71,341	\$ 7.80	\$ 566,459.80
285-701	SY	OPTIONAL BASE, BASE GROUP 01		\$ -	9,904	\$ 198,899		\$ -		\$ -	9,904	\$ 14.00	\$ 138,656.00
285-709	SY	OPTIONAL BASE, BASE GROUP 08	43,013	\$ 914,028		\$ -		\$ -		\$ -	43,013	\$ 21.25	\$ 914,028.25
285-715	SY	OPTIONAL BASE, BASE GROUP 15	6,188	\$ 228,882		\$ -		\$ -		\$ -	5,183	\$ 44.00	\$ 228,052.00
327-70-2	SY	MILLING EXIST ASPH PAVT, 3 1/2" AVG DEPTH	2,486	\$ 13,729		\$ -		\$ -		\$ -	2,486	\$ 5.50	\$ 13,728.00
327-70-3	SY	MILLING EXIST ASPH PAVT, 4 1/2" AVG DEPTH	374	\$ 3,074		\$ -		\$ -		\$ -	274	\$ 11.00	\$ 3,014.00
327-70-4	SY	MILLING EXIST ASPH PAVT, 3" AVG DEPTH	194,194	\$ 605,354		\$ -		\$ -		\$ -	194,194	\$ 4.10	\$ 800,154.40
327-70-6	SY	MILLING EXIST ASPH PAVT, 1 1/2" AVG DEPTH	47,888	\$ 114,867		\$ -		\$ -		\$ -	41,888	\$ 2.80	\$ 114,866.80
327-70-7	SY	MILLING EXIST ASPH PAVT, 4" AVG DEPTH	2,788	\$ 15,183		\$ -		\$ -		\$ -	2,788	\$ 5.50	\$ 15,182.50
334-1-13	TN	SUPERPAVE ASPHALTIC CONC, TRAFFIC C	30,888.00	\$ 2,788,482		\$ -		\$ -		\$ -	30,508.00	\$ 90.25	\$ 2,753,482.38
334-1-3BR	TN	ROADWAY REPAIR, BASE REPAIR	4,388	\$ 284,818		\$ -		\$ -		\$ -	4,388	\$ 65.00	\$ 285,918.40
334-1-3BRC	TN	ROADWAY REPAIR, INCIDENTAL BASE REPAIR	688	\$ 67,880		\$ -		\$ -		\$ -	500	\$ 136.00	\$ 67,500.00
337-7-83	TN	ASPHALT CONCRETE FRICTION COURSE, TRAFFIC C, FC-12.5, PG 78-22	18,822	\$ 2,884,123		\$ -		\$ -		\$ -	18,222	\$ 148.00	\$ 2,884,122.70
425-1-315	EA	INLETS, CURB, TYPE P-1, PARTIAL	1	\$ 4,831		\$ -		\$ -		\$ -	1	\$ 4,831.00	\$ 4,831.00
425-1-351	EA	INLETS, CURB, TYPE P-5, <10'	25	\$ 148,878		\$ -		\$ -		\$ -	25	\$ 5,823.00	\$ 140,575.00
425-1-352	EA	INLETS, CURB, TYPE P-6, >10'		\$ -		\$ -		\$ -		\$ -		\$ -	\$ -
425-1-381	EA	INLETS, CURB, TYPE P-8, <10'	2	\$ 11,889		\$ -		\$ -		\$ -	2	\$ 5,884.00	\$ 11,888.00
425-1-425	EA	INLETS, CURB, TYPE J-2, PARTIAL	1	\$ 9,382		\$ -		\$ -		\$ -	1	\$ 9,382.00	\$ 9,382.00
425-1-452	EA	INLETS, CURB, TYPE J-5, >10'	1	\$ 23,384		\$ -		\$ -		\$ -	1	\$ 23,384.00	\$ 23,384.00
425-2-43	EA	MANHOLES, P-7, PARTIAL	9	\$ 23,884		\$ -		\$ -		\$ -	9	\$ 2,688.00	\$ 23,884.00
425-2-71	EA	MANHOLES, J-7, <10'		\$ -		\$ -		\$ -		\$ -		\$ -	\$ -
425-2-72	EA	MANHOLES, J-7, >10'	6	\$ 78,148		\$ -		\$ -		\$ -	5	\$ 15,228.00	\$ 78,145.00
425-2-73	EA	MANHOLES, J-7, PARTIAL	2	\$ 8,884		\$ -		\$ -		\$ -	2	\$ 2,787.00	\$ 5,584.00
425-2-82	EA	MANHOLES, J-8, >10'	11	\$ 188,881		\$ -		\$ -		\$ -	11	\$ 13,951.00	\$ 153,481.00
425-5	EA	MANHOLE, ADJUST	26	\$ 28,712		\$ -		\$ -		\$ -	38	\$ 742.00	\$ 28,712.00
425-5-1	EA	MANHOLE, ADJUST, UTILITIES	6	\$ 3,719		\$ -		\$ -		\$ -	5	\$ 742.00	\$ 3,710.00
425-6	EA	VALVE BOXES, ADJUST	88	\$ 24,188		\$ -		\$ -		\$ -	58	\$ 418.00	\$ 24,128.00
425-11	EA	MODIFY EXISTING DRAINAGE STRUCTURE	11	\$ 28,885		\$ -		\$ -		\$ -	11	\$ 2,336.00	\$ 25,889.00
430-174-118	LF	PIPE CULVERT, OPTIONAL MATERIAL, ROUND, 18" SD	1,888	\$ 218,244		\$ -		\$ -		\$ -	1,388	\$ 188.00	\$ 218,744.00
430-174-142	LF	PIPE CULVERT, OPTIONAL MATERIAL, ROUND, 42" SD	788	\$ 118,823		\$ -		\$ -		\$ -	783	\$ 145.00	\$ 110,835.00
430-174-148	LF	PIPE CULVERT, OPTIONAL MATERIAL, ROUND, 48" SD	377	\$ 67,880		\$ -		\$ -		\$ -	377	\$ 180.00	\$ 67,880.00
430-174-154	LF	PIPE CULVERT, OPTIONAL MATERIAL, ROUND, 54" SD	17	\$ 18,818		\$ -		\$ -		\$ -	17	\$ 954.00	\$ 16,218.00
430-174-218	LF	PIPE CULVERT, OPTIONAL MATERIAL, OTHER SHAPE - ELLIP/ARCH, 18" SD	88	\$ 18,888		\$ -		\$ -		\$ -	88	\$ 121.00	\$ 10,408.00
430-884-140	EA	MITERED END SECTION, OPTIONAL ROUND, 42" CD	1	\$ 81,879		\$ -		\$ -		\$ -	1	\$ 31,970.00	\$ 31,970.00
430-884-141	EA	MITERED END SECTION, OPTIONAL ROUND, 48" CD	1	\$ 28,888		\$ -		\$ -		\$ -	1	\$ 28,548.00	\$ 28,548.00
520-1-7	LF	CONCRETE CURB & GUTTER, TYPE E	32,877	\$ 888,891		\$ -		\$ -		\$ -	32,577	\$ 24.75	\$ 808,280.75
520-1-10	LF	CONCRETE CURB & GUTTER, TYPE F	1,885	\$ 49,845		\$ -		\$ -		\$ -	1,835	\$ 27.00	\$ 49,545.00
520-2-2	LF	CONCRETE CURB, TYPE B	88	\$ 2,888	78	\$ 1,881		\$ -		\$ -	188	\$ 24.75	\$ 4,108.50
520-2-4	LF	CONCRETE CURB, TYPE D	1	\$ 1,230	50	\$ 50,336		\$ -		\$ -	1,220	\$ 41.25	\$ 50,325.00
520-5-11	LF	TRAFFIC SEPARATOR, CONCRETE, TYPE 1, 4' WIDE	1,887	\$ 42,288		\$ -		\$ -		\$ -	1,537	\$ 27.50	\$ 42,287.50
520-70	SY	CONCRETE TRAFFIC SEPARATOR, SPECIAL - VARIABLE WIDTH	84	\$ 8,888		\$ -		\$ -		\$ -	84	\$ 78.75	\$ 6,689.00
522-1	SY	CONCRETE SIDEWALK, 4'	498	\$ 84,150	271	\$ 18,444		\$ -		\$ -	747	\$ 71.75	\$ 53,587.25
522-2	SY	CONCRETE SIDEWALK, 6'		\$ -	22	\$ 1,821		\$ -		\$ -	22	\$ 82.75	\$ 1,820.50
527-2	SF	DETECTABLE WARNINGS	488	\$ 13,478	188	\$ 6,180		\$ -		\$ -	678	\$ 27.50	\$ 18,672.50
550-10-49	LF	FENCING (WOOD) (8' TO 9' HIGH)		\$ -	280	\$ 8,438		\$ -		\$ -	250	\$ 37.75	\$ 9,437.50
550-10-889	EA	MASONRY COLUMN (MATCH EXISTING)		\$ -	2	\$ 11,884		\$ -		\$ -	2	\$ 5,502.00	\$ 11,004.00
LANDSCAPING BETWEEN LAKE NONA BLVD AND MOB PARK ROAD (8-WAY SHARE)													
580-1-2A	EA	SHADE/CANOPY TREES (100 GAL)	SHARED	\$ 12,891		\$ -	SHARED	\$ 5,891	SHARED	\$ 2,848	17	\$ 1,210.00	\$ 20,570.00
580-1-2A	EA	FLOWERING/ACCENT TREES (85 GAL)	SHARED	\$ 22,882		\$ -	SHARED	\$ 6,134	SHARED	\$ 6,108	81	\$ 805.00	\$ 38,905.00
580-1-2A	EA	PALMS (18-18" CT)	SHARED	\$ 19,378		\$ -	SHARED	\$ 7,880	SHARED	\$ 4,418	89	\$ 482.00	\$ 31,878.00
580-888C	LF	ROOT BARRIER	SHARED	\$ 11,244		\$ -	SHARED	\$ 4,738	SHARED	\$ 2,848	89	\$ 18.75	\$ 18,125.00
580-1-2B	SF	MULCH AT TREES (GROUND MELALEUCA)	SHARED	\$ 1,887		\$ -	SHARED	\$ 884	SHARED	\$ 371	5,394	\$ 0.60	\$ 2,882.00
580-888B	EA	SOIL (PER TREE: PLANTING SOIL/SOIL AMENDMENTS)	SHARED	\$ 3,728		\$ -	SHARED	\$ 1,888	SHARED	\$ 841	149	\$ 46.75	\$ 6,971.50
590-70	LS	IRRIGATION AT TREES (50% OF TOTAL TREE & PLANT COST. HAND WATER UNTIL ESTABLISHED)	SHARED	\$ 34,728		\$ -	SHARED	\$ 13,887	SHARED	\$ 7,828	1	\$ 56,551.58	\$ 56,551.58

Exhibit C

Estimated Costs of Road Project and JPA Segment

ITEM NO.	UNIT	DESCRIPTION	ROADWAY QTY	ROADWAY EXTENDED COST	BIKE TRAIL QTY	BIKE TRAIL EXTENDED COST	CITY WATER RECLAMATION QTY	CITY WATER RECLAMATION EXTENDED COST	ORANGE COUNTY UTILITIES QTY	ORANGE COUNTY UTILITIES EXTENDED COST	TOTAL QUANTITY	UNIT PRICE	TOTAL
LANDSCAPING BETWEEN KIRBY SMITH AND DORRIN (EXCLUSIVE OF LAKE MONA BLVD TO MOORE PARK) (2-WAY SHARE)													
580-1-2A	EA	SHADE/CANOPY TREES (100 GAL)	SHARED	\$ 65,093	\$ -	SHARED	\$ 25,027	\$ -	72	\$ 1,210.00	\$ 87,120.00		
580-1-2A	EA	FLOWERING/ACCENT TREES (100 GAL)	SHARED	\$ 72,897	\$ -	SHARED	\$ 28,278	\$ -	109	\$ 935.00	\$ 101,915.00		
580-1-2A	EA	PALMS (16-18 CT)	SHARED	\$ 67,652	\$ -	SHARED	\$ 27,340	\$ -	208	\$ 462.00	\$ 95,172.00		
580-090C	LF	ROOT BARRIER	SHARED	\$ 27,048	\$ -	SHARED	\$ 10,902	\$ -	2,024	\$ 18.75	\$ 37,950.00		
580-1-2B	SF	MULCH AT TREES (GROUND MELALEUCA)	SHARED	\$ 4,780	\$ -	SHARED	\$ 1,918	\$ -	13,356	\$ 0.50	\$ 6,678.00		
580-090B	EA	SOIL (PER TREE: PLANTING SOIL/SOIL AMENDMENTS)	SHARED	\$ 15,775	\$ -	SHARED	\$ 4,343	\$ -	371	\$ 40.75	\$ 15,118.25		
580-70	LS	IRRIGATION AT TREES (50% OF TOTAL TREE & PLANT COST, HAND WATER UNTIL ESTABLISHED)	SHARED	\$ 138,324	\$ -	SHARED	\$ 51,882	\$ -	1	\$ 179,906.78	\$ 179,906.78		
570-1-2	SY	PERFORMANCE TURF (SOD)	73,222	\$ 417,288	\$ -	\$ -	\$ -	\$ -	73,222	\$ 5.70	\$ 417,365.40		
571-1-11	SY	PLASTIC EROSION MAT, TURF REINFORCED MAT, TYPE 1	4,827	\$ 26,655	\$ -	\$ -	\$ -	\$ -	4,827	\$ 7.60	\$ 36,685.20		
590-1-1	EA	SMALL PLANTS (7 GAL)	41	\$ 2,250	\$ -	\$ -	\$ -	\$ -	41	\$ 55.00	\$ 2,255.00		
590-1-1	EA	SMALL PLANTS (1 & 3 GAL)	1,383	\$ 16,194	\$ -	\$ -	\$ -	\$ -	1,383	\$ 13.75	\$ 19,153.75		
590-1-1	EA	JUNIPERUS VIRGINIANA (7 GAL)	66	\$ 28,680	\$ -	\$ -	\$ -	\$ -	66	\$ 440.00	\$ 28,680.00		
590-1-2A	EA	SHADE/CANOPY TREES (100 GAL)	67	\$ 81,070	\$ -	\$ -	\$ -	\$ -	67	\$ 1,210.00	\$ 81,070.00		
590-1-2A	EA	PALMS (16-18 CT)	38	\$ 17,380	\$ -	\$ -	\$ -	\$ -	38	\$ 462.00	\$ 17,556.00		
590-1-2B	SF	MULCH AT TREES (GROUND MELALEUCA)	6,072	\$ 4,390	\$ -	\$ -	\$ -	\$ -	6,072	\$ 0.50	\$ 4,536.00		
590-090A	EA	TREE PROTECTION	245	\$ 38,965	\$ -	\$ -	\$ -	\$ -	242	\$ 111.00	\$ 26,952.00		
590-090B	EA	SOIL (PER TREE: PLANTING SOIL/SOIL AMENDMENTS)	169	\$ 6,697	\$ -	\$ -	\$ -	\$ -	159	\$ 40.75	\$ 6,488.75		
590-090C	LF	ROOT BARRIER	1,987	\$ 67,083	\$ -	\$ -	\$ -	\$ -	1,987	\$ 18.75	\$ 37,256.25		
590-70	LS	IRRIGATION AT TREES (50% OF TOTAL TREE & PLANT COST, HAND WATER UNTIL ESTABLISHED)	1	\$ 84,252.64	\$ -	\$ -	\$ -	\$ -	1	\$ 84,252.64	\$ 84,252.64		
590-70	SF	IRRIGATION AT LAKE MONA	10,847	\$ 33,088	\$ -	\$ -	\$ -	\$ -	10,847	\$ 3.10	\$ 33,005.70		
590-70	EA	IRRIGATION FOR PROPOSED TREES ALONG LK MONA BLVD (2 BUBBLERS EACH)	52	\$ 5,730	\$ -	\$ -	\$ -	\$ -	52	\$ 110.00	\$ 5,720.00		
630-2-11	LF	CONDUIT, F&I, OPEN TRENCH	1,679	\$ 15,880	\$ -	\$ -	\$ -	\$ -	1,675	\$ 8.30	\$ 15,662.50		
630-2-12	LF	CONDUIT, F&I, DIRECTIONAL BORE	7,845	\$ 186,319	\$ -	\$ -	\$ -	\$ -	7,845	\$ 23.75	\$ 186,318.75		
632-7-1	PI	SIGNAL CABLE-NEW/RECONSTRUCTED INTERSECTION, F&I	16	\$ 72,070	\$ -	\$ -	\$ -	\$ -	10	\$ 7,207.00	\$ 72,070.00		
632-7-4	PI	SIGNAL CABLE, REMOVE-INTERSECTION	10	\$ 7,810	\$ -	\$ -	\$ -	\$ -	10	\$ 781.00	\$ 7,810.00		
633-1-122	LF	FIBER OPTIC CABLE, F&I, UG, 24 FIBERS	580	\$ 2,652	\$ -	\$ -	\$ -	\$ -	580	\$ 4.40	\$ 2,552.00		
633-1-123	LF	FIBER OPTIC CABLE, F&I, UG, 72 FIBERS	120	\$ 6,900	\$ -	\$ -	\$ -	\$ -	120	\$ 5.90	\$ 690.00		
633-2-31	EA	FIBER OPTIC CONNECTION, INSTALL, SPLICE	84	\$ 3,696	\$ -	\$ -	\$ -	\$ -	84	\$ 44.00	\$ 3,696.00		
633-3-11	EA	FIBER OPTIC CONNECTION HARDWARE, F&I, SPLICE ENCLOSURE	4	\$ 861.00	\$ -	\$ -	\$ -	\$ -	4	\$ 861.00	\$ 3,564.00		
633-3-12	EA	FIBER OPTIC CONNECTION HARDWARE, F&I, SPLICE TRAY	7	\$ 423.50	\$ -	\$ -	\$ -	\$ -	7	\$ 60.50	\$ 423.50		
633-3-15	EA	FIBER OPTIC CONNECTION HARDWARE, F&I, PRETERMINATED PATCH PANEL	6	\$ 14,282	\$ -	\$ -	\$ -	\$ -	6	\$ 2,377.00	\$ 14,282.00		
633-8-1	LF	MULTI-CONDUCTOR COMMUNICATION CABLE (F&I)	215	\$ 1,182	\$ -	\$ -	\$ -	\$ -	215	\$ 5.50	\$ 1,182.50		
635-2-11	EA	PULL & SPLICE BOX, F&I (SIDEWALK) (PRIMARY)	15	\$ 11,220	\$ -	\$ -	\$ -	\$ -	15	\$ 748.00	\$ 11,220.00		
635-2-11	EA	PULL & SPLICE BOX, F&I (SPECIAL) (SECONDARY)	33	\$ 25,808	\$ -	\$ -	\$ -	\$ -	33	\$ 778.00	\$ 25,808.00		
635-2-11	EA	PULL & SPLICE BOX, F&I, 15"x24" COVER SIZE	84	\$ 69,716	\$ -	\$ -	\$ -	\$ -	84	\$ 840.00	\$ 69,716.00		
635-2-12	EA	PULL & SPLICE BOX, F&I, 24"x36" COVER SIZE	41	\$ 58,081	\$ -	\$ -	\$ -	\$ -	41	\$ 1,414.00	\$ 58,081.00		
635-2-13	EA	PULL & SPLICE BOX, F&I, 30" X 80" RECTANGULAR	1	\$ 2,448	\$ -	\$ -	\$ -	\$ -	1	\$ 2,448.00	\$ 2,448.00		
638-1-122	AS	ELECTRICAL POWER SERVICE, F&I, UG, METER BY CONTRACTOR	2	\$ 6,080	\$ -	\$ -	\$ -	\$ -	2	\$ 3,028.00	\$ 6,028.00		
638-1-123	AS	ELECTRICAL POWER SERVICE, F&I, UG, NO METER	1	\$ 3,088	\$ -	\$ -	\$ -	\$ -	1	\$ 3,028.00	\$ 3,028.00		
638-1-620	AS	ELECTRICAL POWER SERVICE, REMOVE UG	3	\$ 1,888	\$ -	\$ -	\$ -	\$ -	3	\$ 568.00	\$ 1,686.00		
638-2-1	LF	ELECTRICAL SERVICE WIRE, F&I	468	\$ 2,570	\$ -	\$ -	\$ -	\$ -	450	\$ 6.80	\$ 2,970.00		
641-2-12	EA	PRESTRESSED CONC. POLE, F&I, TYPE P-II SERVICE POLE	4	\$ 6,078	\$ -	\$ -	\$ -	\$ -	4	\$ 2,019.00	\$ 8,078.00		
641-2-40	EA	PRESTRESSED CONC. POLE, COMPLETE POLE REMOVAL-POLE PEDESTAL	4	\$ 2,884	\$ -	\$ -	\$ -	\$ -	4	\$ 671.00	\$ 2,684.00		
641-2-70	EA	PRESTRESSED CONC. POLE, SHALLOW POLE REMOVAL	6	\$ 23,884	\$ -	\$ -	\$ -	\$ -	6	\$ 2,883.00	\$ 23,064.00		
648-1-11	EA	ALUMINUM SIGNALS POLE, PEDESTAL	61	\$ 95,115	\$ -	\$ -	\$ -	\$ -	51	\$ 1,865.00	\$ 95,115.00		
648-1-80	EA	ALUMINUM SIGNALS POLE, REMOVE	23	\$ 2,688	\$ -	\$ -	\$ -	\$ -	23	\$ 116.00	\$ 2,688.00		
649-21-03	EA	STEEL MAST ARM ASSEMBLY, F&I, SINGLE ARM 40'	1	\$ 33,855	\$ -	\$ -	\$ -	\$ -	1	\$ 33,855.00	\$ 33,855.00		
649-21-06	EA	STEEL MAST ARM ASSEMBLY, F&I, SINGLE ARM 50'	3	\$ 116,127	\$ -	\$ -	\$ -	\$ -	3	\$ 38,709.00	\$ 116,127.00		
649-21-10	EA	STEEL MAST ARM ASSEMBLY, F&I, SINGLE ARM 60'	5	\$ 250,189	\$ -	\$ -	\$ -	\$ -	5	\$ 48,032.00	\$ 230,189.00		
649-21-15	EA	STEEL MAST ARM ASSEMBLY, F&I, SINGLE ARM 70'	1	\$ 211,093	\$ -	\$ -	\$ -	\$ -	4	\$ 52,864.00	\$ 211,093.00		
649-21-17	EA	STEEL MAST ARM ASSEMBLY, F&I, DOUBLE ARM 70'-40'	1	\$ 48,617	\$ -	\$ -	\$ -	\$ -	1	\$ 48,617.00	\$ 48,617.00		
649-21-21	EA	STEEL MAST ARM ASSEMBLY, F&I, SINGLE ARM 78'	3	\$ 174,405	\$ -	\$ -	\$ -	\$ -	3	\$ 58,135.00	\$ 174,405.00		
649-26-03	EA	STEEL MAST ARM ASSEMBLY, REMOVE, SHALLOW, BOLT ON	8	\$ 22,832	\$ -	\$ -	\$ -	\$ -	9	\$ 3,848.00	\$ 32,832.00		
650-1-14	EA	TRAFFIC SIGNAL, F&I, ALUMINUM, 3-SEC, 1-WAY	85	\$ 88,625	\$ -	\$ -	\$ -	\$ -	85	\$ 1,045.00	\$ 88,625.00		
650-1-16	EA	TRAFFIC SIGNAL, F&I, ALUMINUM, 4-SEC, 1-WAY	19	\$ 12,710	\$ -	\$ -	\$ -	\$ -	10	\$ 1,271.00	\$ 12,710.00		
650-1-19	EA	TRAFFIC SIGNAL, F&I, ALUMINUM, 5-SEC, 1-WAY	1	\$ 1,888	\$ -	\$ -	\$ -	\$ -	1	\$ 1,888.00	\$ 1,888.00		
650-1-80	AS	TRAFFIC SIGNAL, REMOVE	26	\$ 3,018	\$ -	\$ -	\$ -	\$ -	26	\$ 116.00	\$ 3,018.00		
650-1-70	AS	TRAFFIC SIGNAL, RELOCATE	4	\$ 1,788	\$ -	\$ -	\$ -	\$ -	4	\$ 440.00	\$ 1,788.00		
650-2-102	EA	VEHICULAR SIGNAL AUX., REPLACE-F&I, BACKPLATE WITH REFLECT BORDER	17	\$ 4,986	\$ -	\$ -	\$ -	\$ -	17	\$ 270.00	\$ 4,590.00		
653-1-11	AS	PEDESTRIAN SIGNAL, F&I, LED COUNTDOWN 1-WAY	46	\$ 34,914	\$ -	\$ -	\$ -	\$ -	46	\$ 759.00	\$ 34,914.00		
653-1-12	AS	PEDESTRIAN SIGNAL, F&I, LED COUNTDOWN 2-WAY	9	\$ 6,663	\$ -	\$ -	\$ -	\$ -	6	\$ 1,441.00	\$ 8,646.00		
660-1-800	EA	LOOP DETECTOR INDUCTIVE, REMOVE	3	\$ 63	\$ -	\$ -	\$ -	\$ -	3	\$ 27.50	\$ 82.50		
660-4-11	EA	VEHICLE DETECTION SYSTEM-VIDEO, F&I, CABINET	6	\$ 87,780	\$ -	\$ -	\$ -	\$ -	6	\$ 14,616.00	\$ 87,780.00		
660-4-12	EA	VEHICLE DETECTION SYSTEM-VIDEO, F&I, ABOVE GROUND	19	\$ 68,988	\$ -	\$ -	\$ -	\$ -	19	\$ 3,472.00	\$ 65,866.00		
660-4-42	EA	VEHICLE DETECTION SYSTEM-VIDEO, RELOCATE ABOVE GROUND	9	\$ 13,089	\$ -	\$ -	\$ -	\$ -	9	\$ 1,507.00	\$ 13,593.00		
660-4-51	EA	VEHICLE DETECTION SYSTEM-VIDEO, ADJUST CABINET	4	\$ 3,780	\$ -	\$ -	\$ -	\$ -	4	\$ 877.00	\$ 2,708.00		
663-1-121	EA	SIGNAL PRIORITY AND PREEMPTION SYSTEM, F&I, GPS, CABINET	9	\$ 52,434	\$ -	\$ -	\$ -	\$ -	9	\$ 5,826.00	\$ 52,434.00		
663-1-122	EA	SIGNAL PRIORITY AND PREEMPTION SYSTEM, F&I, GPS, DETECTOR	6	\$ 48,888	\$ -	\$ -	\$ -	\$ -	9	\$ 4,500.00	\$ 40,500.00		
663-1-400	EA	SIGNAL PRIORITY AND PREEMPTION SYSTEM, RELOCATE	1	\$ 1,188	\$ -	\$ -	\$ -	\$ -	1	\$ 1,183.00	\$ 1,183.00		
665-1-11	EA	PEDESTRIAN DETECTOR, F&I, STANDARD	88	\$ 24,344	\$ -	\$ -	\$ -	\$ -	58	\$ 418.00	\$ 24,244.00		

Exhibit C

Estimated Costs of Road Project and JPA Segment

ITEM NO.	UNIT	DESCRIPTION	ROADWAY QTY	ROADWAY EXTENDED COST	BIKE TRAIL QTY	BIKE TRAIL EXTENDED COST	CITY WATER RECLAMATION QTY	CITY WATER RECLAMATION EXTENDED COST	ORANGE COUNTY UTILITIES QTY	ORANGE COUNTY UTILITIES EXTENDED COST	TOTAL QUANTITY	UNIT PRICE	TOTAL
570-5-151	AS	TRAFFIC CONTROLLER ASSEMBLY, F&I, ATC, 1 PREEMPTION	4	\$ 936,000							4	\$ 34,005.00	\$ 136,020.00
570-5-400	AS	TRAFFIC CONTROLLER ASSEMBLY, MODIFY	0	\$ 11,000							0	\$ 1,820.00	\$ 11,520.00
570-5-600	AS	TRAFFIC CONTROLLER ASSEMBLY, REMOVE	4	\$ 2,954							4	\$ 506.00	\$ 2,024.00
682-1-400	EA	ITS CCTV CAMERA, RELOCATE	1	\$ 1,878							1	\$ 1,878.00	\$ 1,878.00
684-1-1	EA	MANAGED FIELD ETHERNET SWITCH, F&I	4	\$ 11,312							4	\$ 2,828.00	\$ 11,312.00
684-1-4	EA	MANAGED FIELD ETHERNET SWITCH, RELOCATE	1	\$ 584							1	\$ 584.00	\$ 584.00
684-8-40	EA	WIRELESS COMMUNICATION DEVICE, RELOCATE	1	\$ 1,818							1	\$ 1,818.00	\$ 1,818.00
700-1-11	AS	SINGLE POST SIGN, F&I, GROUND MOUNT (UP TO 12SF)	101	\$ 26,190	0	\$ 3,222					110	\$ 358.00	\$ 39,360.00
700-1-12	AS	SINGLE POST SIGN, F&I, GROUND MOUNT (12SF-26SF)	14	\$ 15,210							14	\$ 1,104.00	\$ 16,716.00
700-1-13	AS	SINGLE POST SIGN, F&I, GROUND MOUNT (21SF-30SF)	3	\$ 4,677							3	\$ 1,359.00	\$ 4,077.00
700-1-50	AS	SINGLE POST SIGN (RELOCATE)	3	\$ 447							3	\$ 149.00	\$ 447.00
700-1-60	AS	SINGLE POST SIGN (REMOVE)	85	\$ 4,875							85	\$ 56.00	\$ 4,875.00
700-2-50	AS	MULTI-POST SIGN (RELOCATE)	1	\$ 2,421							1	\$ 2,421.00	\$ 2,421.00
700-3-201	EA	SIGN PANEL, F&I, OVERHEAD MOUNT, UP TO 12 SF	0	\$ 4,678							0	\$ 622.00	\$ 4,678.00
700-3-501	EA	SIGN PANEL, RELOCATE, UP TO 12 SF	3	\$ 1,839							3	\$ 413.00	\$ 1,239.00
700-3-601	EA	SIGN PANEL, REMOVE, UP TO 12 SF	1	\$ 118	1	\$ 118					2	\$ 116.00	\$ 232.00
700-5-22	EA	INTERNALLY ILLUMINATED SIGN, F&I, 12-18 SF	23	\$ 78,288							22	\$ 3,604.00	\$ 78,288.00
700-5-50	EA	INTERNALLY ILLUMINATED SIGN, RELOCATE	3	\$ 3,234							3	\$ 1,078.00	\$ 3,234.00
700-11-391	AS	ELECTRONIC DISPLAY SIGN, F&I OVERHEAD MOUNT-AC POWERED, BLANK OUT 12 SF	5	\$ 28,800							5	\$ 5,162.00	\$ 25,910.00
705-10-1	EA	OBJECT MARKER, TYPE 1	21	\$ 9,562							31	\$ 162.00	\$ 5,042.00
705-10-4	EA	OBJECT MARKER, TYPE 4	18	\$ 3,453							18	\$ 162.00	\$ 3,453.00
705-11-1	EA	DELINEATOR, FLEXIBLE TUBULAR	14	\$ 1,232							14	\$ 88.00	\$ 1,232.00
705-11-3	EA	DELINEATOR, FLEXIBLE TUBULAR, HIGH VISIBILITY MEDIUM	1	\$ 294							1	\$ 294.00	\$ 294.00
710-00	LS	PAINTED PAVEMENT MARKINGS, FINAL SURFACE	1	\$ 82,524							1	\$ 82,524.00	\$ 82,524.00
710-11-280	SF	PAINTED PAVEMENT MARKINGS, STANDARD, YELLOW, ISLAND NOSE	236.0	\$ 715							325	\$ 2.20	\$ 714.78
710-11-170	EA	PAINTED PAVEMENT MARKINGS, STANDARD, WHITE, ARROWS	0	\$ -	0	\$ 225					0	\$ 37.50	\$ 225.00
710-11-201	GM	PAINTED PAVEMENT MARKINGS, STANDARD, YELLOW, SOLID, 6"		\$ -	0.390	\$ 681					0.359	\$ 1,341.00	\$ 481.42
710-11-224	LF	PAINTED PAVEMENT MARKINGS, STANDARD, YELLOW, SOLID FOR DIAGONAL OR CHEVRON, 18"		\$ -	40.1	\$ 80					40	\$ 1.50	\$ 60.15
711-11-123	LF	SOLID TRAFFIC STRIPE (THERMO) (WHITE) (SOLID) (12")	5,163.0	\$ 22,040							8,163	\$ 2.70	\$ 22,040.10
711-11-124	LF	SOLID TRAFFIC STRIPE (THERMO) (WHITE) (SOLID) (16")	693.4	\$ 2,181							588	\$ 3.70	\$ 2,180.78
711-11-125	LF	SOLID TRAFFIC STRIPE (THERMO) (WHITE) (SOLID) (24") FOR STOP BARS	1,033.0	\$ 19,333							1,853	\$ 5.80	\$ 10,832.70
711-11-141	GM	SKIP TRAFFIC STRIPE (THERMO) (WHITE) (2'-4") (8")	1,270	\$ 3,575							1,270	\$ 2,421.00	\$ 3,074.67
711-11-224	LF	SOLID TRAFFIC STRIPE (THERMO) (YELLOW) (SOLID) (18")	691.0	\$ 3,852	40	\$ 148					992	\$ 3.70	\$ 3,670.03
711-11-241	GM	SKIP TRAFFIC STRIPE (THERMO) (YELLOW) (2'-4") (8") (8")	0.447	\$ 1,688							0.447	\$ 2,437.00	\$ 1,089.34
711-14-125	LF	SOLID TRAFFIC STRIPE (PREFORMED THERMO) (WHITE) (24")	5,804.1	\$ 102,076							5,804	\$ 18.25	\$ 102,074.83
711-14-180	EA	PAVEMENT MESSAGE (PREFORMED THERMO)	121	\$ 82,073							121	\$ 513.00	\$ 82,073.00
711-14-170	EA	DIRECTIONAL ARROW (PREFORMED THERMO)	285	\$ 82,885							285	\$ 281.00	\$ 82,885.00
711-11-180	LF	YIELD LINE (THERMO) (WHITE)	14.3	\$ 282							14	\$ 18.75	\$ 282.43
711-18-101	GM	SOLID TRAFFIC STRIPE (THERMO) (WHITE) (SOLID) (6")	13,884	\$ 84,667							12,504	\$ 4,358.00	\$ 54,467.42
711-18-102	GM	SOLID TRAFFIC STRIPE (THERMO) (WHITE) (SOLID) (8")	0.485	\$ 2,789							0.484	\$ 6,121.00	\$ 3,788.14
711-18-131	GM	SKIP TRAFFIC STRIPE (THERMO) (WHITE) (10'-30") (6")	13,489	\$ 50,789							13,489	\$ 1,541.00	\$ 20,755.75
711-18-133	GM	SKIP TRAFFIC STRIPE (THERMO) (WHITE) (3'-9") (12")	0.178	\$ 791							0.170	\$ 4,128.00	\$ 701.42
711-18-201	GM	SOLID TRAFFIC STRIPE (THERMO) (YELLOW) (SOLID) (6")	7,787	\$ 33,615							7,757	\$ 4,358.00	\$ 33,812.78
711-18-202	GM	SOLID TRAFFIC STRIPE (THERMO) (YELLOW) (8")	0.349	\$ 3,621							0.389	\$ 8,214.00	\$ 3,030.87
711-17	SF	THERMOPLASTIC, REMOVE EXISTING THERMOPLASTIC PAVEMENT MARKINGS	17,389	\$ 83							17	\$ 3.10	\$ 82.70
713-100-1	LF	SOLID TRAFFIC STRIPE (PPRT) (WHITE) (8")	1,980	\$ 8,982							1,103	\$ 7.30	\$ 6,051.00
713-100-2	LF	SOLID TRAFFIC STRIPE (PPRT) (WHITE) (18")	235	\$ 3,114							235	\$ 13.25	\$ 3,113.75
713-100-3	NM	SOLID TRAFFIC STRIPE (PPRT) (YELLOW) (8")	0.887	\$ 1,881							0.057	\$ 34,747.00	\$ 1,980.56
713-100-4	NM	SOLID TRAFFIC STRIPE (PPRT) (CONTRAST) (WHITE/BLACK) (8")	0.880	\$ 2,678							0.080	\$ 27,508.00	\$ 2,475.72
715-6-31	EA	LUMINAIRE & BRACKET ARM-ALUMINUM, F&I, NEW	37,889	\$ 31,837							17	\$ 1,871.00	\$ 31,807.00
715-12-14	EA	LUMINAIRE, F&I- REPLACE EXISTING LUMINAIRE ON EXISTING POLE/ARM, ROADWAY, SHOEBOX	15	\$ 17,895							14	\$ 1,221.00	\$ 17,084.00
715-500-1	EA	POLE CABLE DISTRIBUTION SYSTEM, CONVENTIONAL	10	\$ 11,660							10	\$ 748.00	\$ 11,660.00
715-511-340	EA	LIGHT POLE COMPLETE- SPECIAL DESIGN, F&I, SINGLE ARM SHOULDER MNT, CONC, 40'	0	\$ 89,416							0	\$ 8,302.00	\$ 89,416.00
715-540-000	EA	LIGHT POLE COMPLETE- SPECIAL DESIGN, RELOCATE	0	\$ 26,784							0	\$ 3,588.00	\$ 26,784.00
751-38-11	EA	BICYCLE PARKING RACK		\$ -	2	\$ 2,516					2	\$ 1,158.00	\$ 2,516.00
751-38-19	EA	BENCH, PRE FABRICATED		\$ -	1	\$ 2,808					1	\$ 2,808.00	\$ 2,808.00

Exhibit C
Estimated Costs of Road Project and JPA Segment

ITEM NO.	UNIT	DESCRIPTION	ROADWAY QTY	ROADWAY EXTENDED COST	BIKE TRAIL QTY	BIKE TRAIL EXTENDED COST	CITY WATER RECLAMATION QTY	CITY WATER RECLAMATION EXTENDED COST	ORANGE COUNTY UTILITIES QTY	ORANGE COUNTY UTILITIES EXTENDED COST	TOTAL QUANTITY	UNIT PRICE	TOTAL	
751-38A	EA	BICYCLE AIR KIT		\$ -	1	\$ 1,417		\$ -		\$ -	1	\$ 1,417.00	\$ 1,417.00	
751-38B	EA	BICYCLE REPAIR STATION		\$ -	1	\$ 1,894		\$ -		\$ -	1	\$ 1,894.00	\$ 1,894.00	
11.250.110	SY	CONCRETE DRIVEWAYS AND SIDEWALK REMOVAL AND REPLACEMENT - 6" THICK SIDEWALK		\$ -		\$ -	70	\$ 7,850	144	\$ 15,130	214	\$ 105.00	\$ 22,470.00	
11.251.112	EA	CONSTRUCT PUBLIC SIDEWALK ADA RAMP		\$ -		\$ -	3	\$ 3,788	8	\$ 7,888	9	\$ 1,286.00	\$ 11,384.00	
11.260.110	EA	STORM PIPE REMOVAL AND REPLACEMENT (15" - 18" DIAMETER)		\$ -		\$ -	37	\$ 311,086	11	\$ 82,488	48	\$ 8,408.00	\$ 403,584.00	
11.260.111	EA	STORM PIPE REMOVAL AND REPLACEMENT (24" DIAMETER)		\$ -		\$ -	4	\$ 33,912		\$ -	4	\$ 8,478.00	\$ 33,912.00	
11.260.112	EA	STORM PIPE REMOVAL AND REPLACEMENT (36" DIAMETER)		\$ -		\$ -	8	\$ 74,144		\$ -	8	\$ 8,268.00	\$ 74,144.00	
11.271.110	EA	RELOCATION OF STORMWATER STRUCTURE AT STATION 1121+15		\$ -		\$ -		\$ -	1	\$ 22,779	1	\$ 22,779.00	\$ 22,779.00	
11.280.110	LF	REMOVAL OF CURBING		\$ -		\$ -		\$ -		\$ -		\$ -	\$ -	
11.530.110	LF	REMOVE 18" RECLAIMED WATER MAIN		\$ -		\$ -		\$ -	883	\$ 38,813	883	\$ 51.00	\$ 33,813.00	
12.110.116	LF	FURNISH & INSTALL DIP WATER MAIN W/FITTINGS AND RESTRAINED JOINTS (36" DIAMETER)		\$ -		\$ -		\$ -	4,985	\$ 1,875,995	4,985	\$ 367.00	\$ 1,875,355.00	
12.120.110	LF	FURNISH & INSTALL DIP RECLAIMED WATER MAIN W/FITTINGS AND RESTRAINED JOINTS AND POLYETHYLENE ENCASUREMENT, 4" DIAMETER		\$ -		\$ -	20	\$ 2,840		\$ -	20	\$ 142.00	\$ 2,840.00	
12.120.111	LF	FURNISH & INSTALL DIP RECLAIMED WATER MAIN W/FITTINGS AND RESTRAINED JOINTS AND POLYETHYLENE ENCASUREMENT, 6" DIAMETER		\$ -		\$ -	41	\$ 4,223		\$ -	41	\$ 103.00	\$ 4,223.00	
12.120.112	LF	FURNISH & INSTALL DIP RECLAIMED WATER MAIN W/FITTINGS AND RESTRAINED JOINTS AND POLYETHYLENE ENCASUREMENT, 8" DIAMETER		\$ -		\$ -	39	\$ 3,849		\$ -	39	\$ 177.00	\$ 3,540.00	
12.120.113	LF	FURNISH & INSTALL DIP RECLAIMED WATER MAIN W/FITTINGS AND RESTRAINED JOINTS AND POLYETHYLENE ENCASUREMENT, 10" DIAMETER		\$ -		\$ -	158	\$ 47,838		\$ -	158	\$ 352.00	\$ 47,520.00	
12.120.114	LF	FURNISH & INSTALL DIP RECLAIMED WATER MAIN W/FITTINGS AND RESTRAINED JOINTS AND POLYETHYLENE ENCASUREMENT, 12" DIAMETER		\$ -		\$ -	112	\$ 37,820		\$ -	112	\$ 335.00	\$ 37,520.00	
12.120.115	LF	FURNISH & INSTALL DIP RECLAIMED WATER MAIN W/FITTINGS AND RESTRAINED JOINTS AND POLYETHYLENE ENCASUREMENT, 18" DIAMETER		\$ -		\$ -	357	\$ 113,282	33	\$ 11,088	370	\$ 338.00	\$ 124,320.00	
12.120.116	LF	FURNISH & INSTALL DIP RECLAIMED WATER MAIN W/FITTINGS AND RESTRAINED JOINTS AND POLYETHYLENE ENCASUREMENT, 24" DIAMETER		\$ -		\$ -	38	\$ 4,720	4,680	\$ 1,088,240	4,818	\$ 238.00	\$ 1,087,960.00	
12.120.117	LF	FURNISH & INSTALL DIP RECLAIMED WATER MAIN W/FITTINGS AND RESTRAINED JOINTS AND POLYETHYLENE ENCASUREMENT, 30" DIAMETER		\$ -		\$ -	14,144	\$ 3,848,410		\$ -	14,144	\$ 256.00	\$ 3,848,410.00	
12.130.114	LF	8" PVC FORCE MAIN	29	\$ 1,580		\$ -		\$ -		\$ -	29	\$ 78.00	\$ 1,560.00	
12.130.115	LF	10" PVC FORCE MAIN	1,890	\$ 89,825		\$ -		\$ -		\$ -	1,890	\$ 57.75	\$ 86,625.00	
12.210.111	EA	FURNISH & INSTALL GATE VALVE WITH BOX (6" DIAMETER)		\$ -		\$ -		\$ -	1	\$ 1,811	1	\$ 1,811.00	\$ 1,811.00	
12.210.115	EA	FURNISH & INSTALL GATE VALVE WITH BOX (10" DIAMETER)		\$ -		\$ -		\$ -	2	\$ 10,282	2	\$ 5,128.00	\$ 10,252.00	
12.210.117	EA	FURNISH & INSTALL GATE VALVE WITH BOX (24" DIAMETER)		\$ -		\$ -		\$ -	4	\$ 53,372	4	\$ 13,343.00	\$ 53,372.00	
12.210.119	EA	FURNISH & INSTALL GATE VALVE WITH BOX (30" DIAMETER)		\$ -		\$ -		\$ -	4	\$ 184,884	4	\$ 46,168.00	\$ 184,884.00	
12.220.110	EA	PLUG VALVE (100% PORT) WITH BOX (4" DIAMETER)		\$ -		\$ -	1	\$ 10,784		\$ -	1	\$ 10,784.00	\$ 10,784.00	
12.220.111	EA	PLUG VALVE (100% PORT) WITH BOX (6" DIAMETER)	1	\$ 11,891		\$ -	2	\$ 22,082		\$ -	3	\$ 11,001.00	\$ 33,003.00	
12.220.112	EA	PLUG VALVE (100% PORT) WITH BOX (8" DIAMETER)		\$ -		\$ -	3	\$ 34,140		\$ -	3	\$ 11,380.00	\$ 34,140.00	
12.220.113	EA	PLUG VALVE (100% PORT) WITH BOX (10" DIAMETER)	18	\$ 134,640		\$ -	3	\$ 87,462		\$ -	13	\$ 12,484.00	\$ 162,292.00	
12.220.114	EA	PLUG VALVE (100% PORT) WITH BOX (12" DIAMETER)		\$ -		\$ -	3	\$ 38,811		\$ -	3	\$ 12,937.00	\$ 38,811.00	
12.220.115	EA	PLUG VALVE (100% PORT) WITH BOX (16" DIAMETER)		\$ -		\$ -	4	\$ 85,804		\$ -	4	\$ 16,451.00	\$ 65,804.00	
12.220.116	EA	PLUG VALVE (100% PORT) WITH BOX (24" DIAMETER)		\$ -		\$ -	1	\$ 31,061		\$ -	1	\$ 31,061.00	\$ 31,061.00	
12.220.117	EA	PLUG VALVE (100% PORT) WITH BOX (30" DIAMETER)		\$ -		\$ -	39	\$ 847,539		\$ -	20	\$ 47,376.00	\$ 847,520.00	
12.310.118	EA	FURNISH AND INSTALL TAPPING SLEEVE AND VALVE ASSEMBLY (24" DIAMETER)		\$ -		\$ -	1	\$ 45,431		\$ -	1	\$ 45,431.00	\$ 45,431.00	
12.420.112	EA	CUT-IN CONNECTION TO EXISTING RWM (10" DIAMETER)		\$ -		\$ -	1	\$ -		\$ -		\$ -	\$ -	
12.420.113	EA	CUT-IN CONNECTION TO EXISTING RWM (12" DIAMETER)		\$ -		\$ -	1	\$ 7,822		\$ -	1	\$ 7,822.00	\$ 7,822.00	
12.420.114	EA	CUT-IN CONNECTION TO EXISTING RWM (18" DIAMETER)		\$ -		\$ -	1	\$ 4,449		\$ -	1	\$ 4,448.00	\$ 4,448.00	
12.420.116	EA	CUT-IN CONNECTION TO EXISTING RWM (30" DIAMETER)		\$ -		\$ -	1	\$ 44,254		\$ -	1	\$ 44,254.00	\$ 44,254.00	
12.530.110	EA	FURNISH & INSTALL OFF-BET AIR RELEASE VALVE ASSEMBLY (2" DIAMETER)		\$ -		\$ -	1	\$ 19,184		\$ -	1	\$ 44,254.00	\$ 44,254.00	
12.810.110	LF	JACK AND BORE 54" STEEL CASING DIP CARRIER PIPE - POTABLE WATER MAIN		\$ -		\$ -	7	\$ 84,948		\$ -	28,288	\$ 3	\$ 10,184.00	\$ 30,552.00
12.820.110	LF	JACK AND BORE 42" STEEL CASING DIP CARRIER PIPE - RECLAIMED WATER MAIN		\$ -		\$ -	1	\$ -		\$ -	14	\$ 12,907.00	\$ 188,088.00	
12.820.111	LF	JACK AND BORE 48" STEEL CASING DIP CARRIER PIPE - RECLAIMED WATER MAIN		\$ -		\$ -	1	\$ -		\$ -	84	\$ 87,748	\$ 97,740.00	
12.820.112	LF	OPEN CUT & INSTALL 48" STEEL CASING DIP CARRIER PIPE - RECLAIMED WATER MAIN		\$ -		\$ -	240	\$ 494,400		\$ -	54	\$ 1,878.00	\$ 80,612.00	
12.910.110	EA	RECONNECTION OF 4" RECLAIMED SERVICE		\$ -		\$ -	89	\$ 26,155		\$ -	240	\$ 2,080.00	\$ 494,400.00	
12.910.110	EA	RECONNECTION OF 6" RECLAIMED SERVICE		\$ -		\$ -	1	\$ 5,778	1	\$ 5,778	80	\$ 395.00	\$ 35,155.00	
12.910.110	EA	RECONNECTION OF 8" RECLAIMED SERVICE		\$ -		\$ -	2	\$ 4,484		\$ -	2	\$ 2,242.00	\$ 4,484.00	
12.910.110	EA	RECONNECTION OF 10" RECLAIMED SERVICE		\$ -		\$ -	2	\$ 5,988		\$ -	2	\$ 2,784.00	\$ 5,588.00	
12.910.110	EA	RECONNECTION OF 12" RECLAIMED SERVICE		\$ -		\$ -	2	\$ 8,918		\$ -	2	\$ 3,009.00	\$ 6,018.00	
12.910.110	EA	RECONNECTION OF 18" RECLAIMED SERVICE		\$ -		\$ -	1	\$ 5,280		\$ -	1	\$ 5,590.00	\$ 5,590.00	
12.920.110	EA	RELOCATION OF EXISTING RECLAIMED WATER MAINS (4" TO 12")		\$ -		\$ -	1	\$ 8,323		\$ -	2	\$ 9,323.00	\$ 18,646.00	
12.920.110	EA	CUT-IN CONNECTION TO EXISTING FORCE MAIN		\$ -		\$ -	1	\$ -		\$ -	1	\$ 7,834	\$ 7,834.00	
900-1	LS	AS-BUILT SURVEY	SHARED	\$ 38,899		\$ -		\$ -		\$ -	1	\$ 6,421.00	\$ 38,528.00	
900-3	LS	DECORATIVE COLUMN (MATCH EXISTING)		\$ 218,886		\$ -		\$ -		\$ -	1	\$ 355,812.00	\$ 555,612.00	
900-3	LS	EXISTING DRAINAGE AND UTILITY ADJUSTMENTS		\$ -		\$ -	1	\$ 11,003		\$ -	1	\$ 11,003.00	\$ 11,003.00	
900-25-0UC	AL	ALLOWANCE - OUC RAILROAD FLAGGER FOR RWM INSTALLATION - DO NOT BID		\$ -		\$ -	1	\$ 15,000		\$ -	1	\$ 15,000.00	\$ 15,000.00	
12.920.111	EA	FURNISH & INSTALL WASTEWATER AIR RELEASE VALVE ASSEMBLY		\$ 43,437		\$ -		\$ -		\$ -	3	\$ 14,479.00	\$ 43,437.00	

Exhibit C

Estimated Costs of Road Project and JPA Segment

ITEM NO.	UNIT	DESCRIPTION	ROADWAY QTY	ROADWAY EXTENDED COST	BIKE TRAIL QTY	BIKE TRAIL EXTENDED COST	CITY WATER RECLAMATION QTY	CITY WATER RECLAMATION EXTENDED COST	ORANGE COUNTY UTILITIES QTY	ORANGE COUNTY UTILITIES EXTENDED COST	TOTAL QUANTITY	UNIT PRICE	TOTAL
		CITY TRANSPORTATION W/O SHARED ITEMS: [REDACTED]											
		CITY TRANSPORTATION PERCENTAGE OF WORK: [REDACTED]											
		PERCENTAGE FOR 3-WAY SHARE: [REDACTED]											
				\$ 10,116,898.01		\$ 434,842.17		\$ 7,890,485.89		\$ 4,323,908.52			
		CITY TRANSPORTATION TOTAL COST: \$ [REDACTED]		\$ 10,116,898.01									
		CITY WATER RECLAMATION TOTAL COST: \$ [REDACTED]						\$ 7,890,485.89					
		ORANGE COUNTY UTILITIES TOTAL COST: \$ [REDACTED]								\$ 4,323,908.52			
													GRAND TOTAL COST: \$ 31,755,864.52
													TOTAL BASE BID: \$ 31,755,864