



Interoffice Memorandum

August 16, 2019

TO: Mayor Jerry L. Demings  
and Board of County Commissioners

FROM: Diana M. Almodovar, P.E., Interim Director, Public Works Department *DMA*

CONTACT PERSON: Christine N. Lofye, P.E., Manager *CNL*  
Traffic Engineering Division

PHONE NUMBER: (407) 836-7891

SUBJ: **Installation of "No Parking" signs on Wetherbee Road from 275 feet south to 900 feet north of OUC Railroad Crossing**

The Roads and Drainage Division has requested that "No Parking" signs be installed on the west side of Wetherbee Road from 275 feet south to 900 feet north of the OUC railroad crossing.

Traffic Engineering staff have determined that the parking of vehicles along the unpaved shoulder of Wetherbee Road is damaging the roadway. The increased number of trucks has caused pavement failure and shoulder erosion creating unstable drop-off conditions. Therefore, staff recommends the installation of "No Parking" signs.

Staff recommends that the Board approve the installation of "No Parking" signs on the west side of Wetherbee Road from 275 feet south to 900 feet north of the OUC railroad crossing.

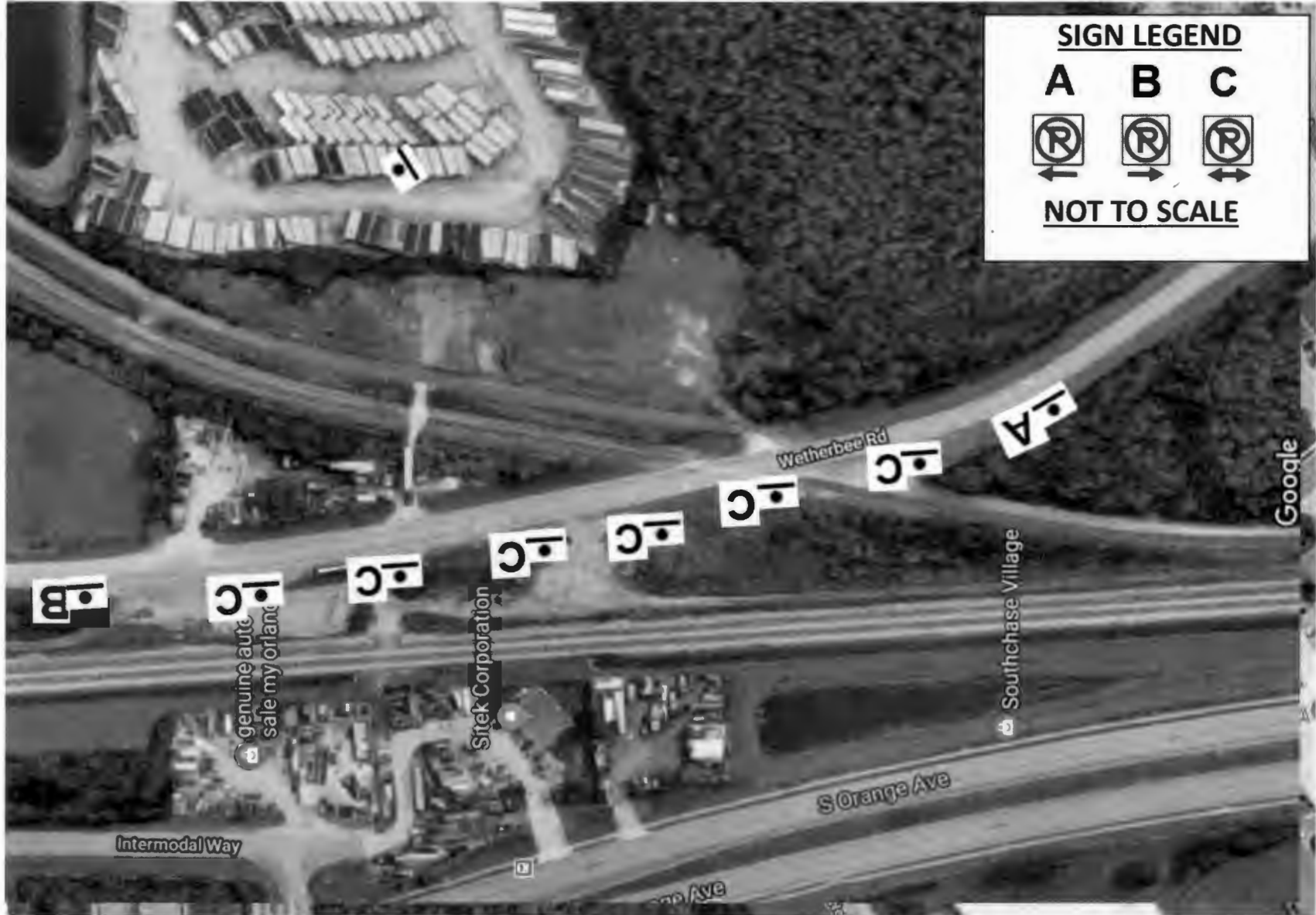
**Action Requested: Approval of "No Parking" signs installation on the west side of Wetherbee Road from 275 feet south to 900 feet north of the OUC Railroad Crossing. District 4.**

DMA/CNL/FY

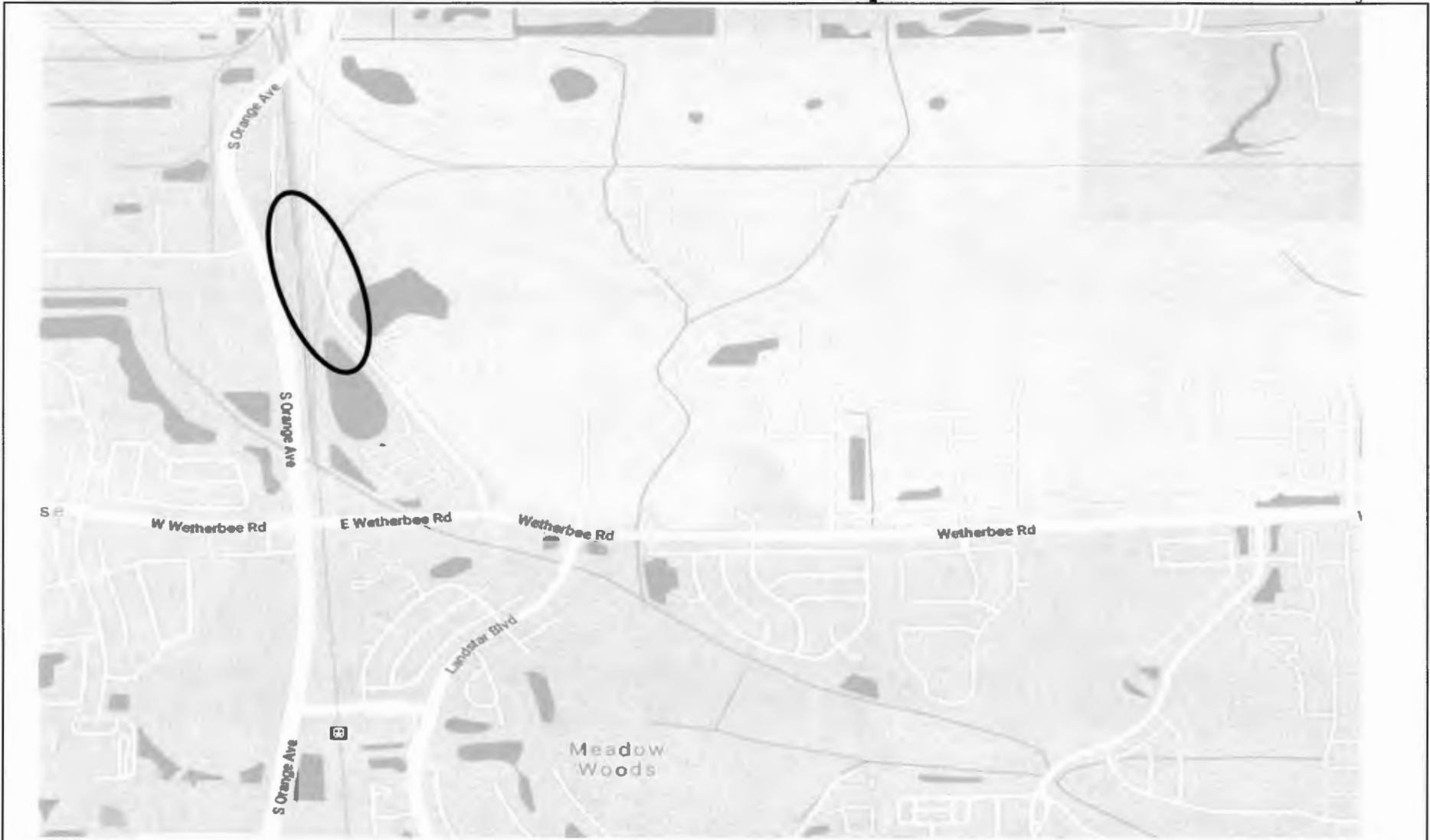
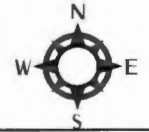
Attachments

# Wetherbee Rd. Location Map

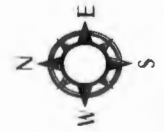
Page 2 of 2



# Wetherbee Rd. Consent Agenda District Map



**“No Parking” Signs**  
**District 4 : Commissioner Maribel Gomez Cordero**



# Wetherbee Rd. Consent Agenda Location Map

