

The background of the slide is a photograph of a sunset over a body of water. The sky is a mix of dark blue, purple, and orange. The water reflects the colors of the sky. On the right side, there is a wooden pier or dock structure extending into the water.

# ADAMANTLY OPPOSED

I am adamantly OPPOSED to any future residential or commercial developments within Shingle Creek.

Single Creek is the northernmost headwaters of the Everglades and, therefore, is of great ecological value.

In addition to its immense value to our environment, Shingle Creek is the watershed where flood waters from the surrounding districts flow.

This includes Big Sand Lake which is already being used to its limit in receiving water from its tributary lakes and its tributary areas from all over Dr. Phillips and the Sand Lake Basin.

Future developments in Shingle Creek would leave this basin in a perilous condition.

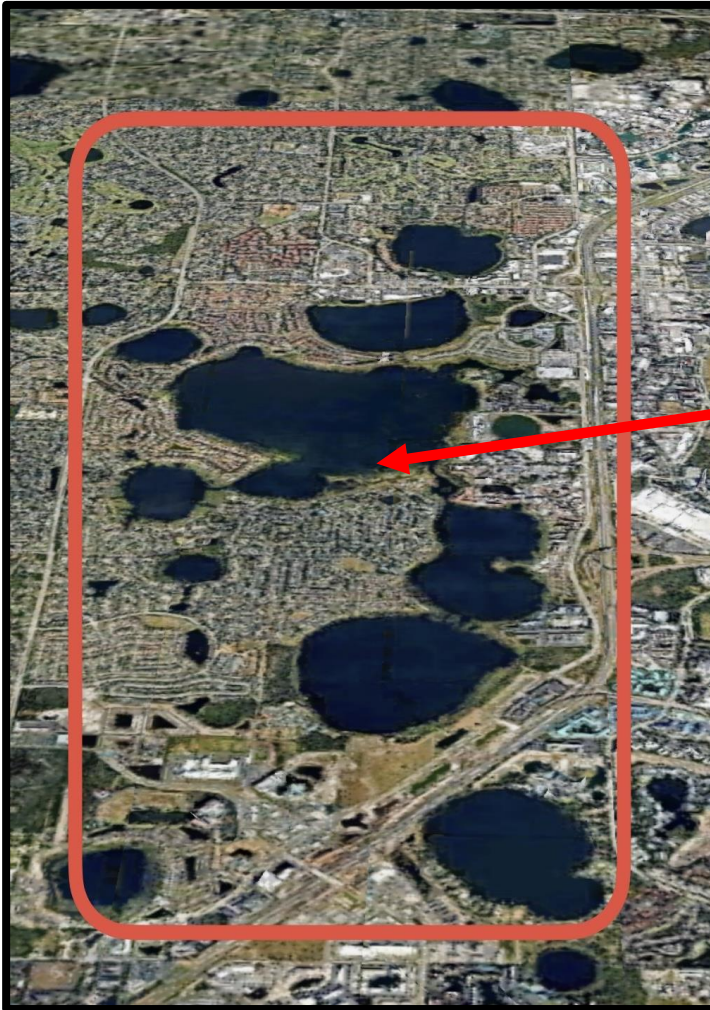
These photos show the view of Big Sand Lake from my home. They date back 30 years were taken about 15 years apart.

It's clear to see how the landscape of the lake has changed drastically now posing as an imminent threat for potentially catastrophic flooding.





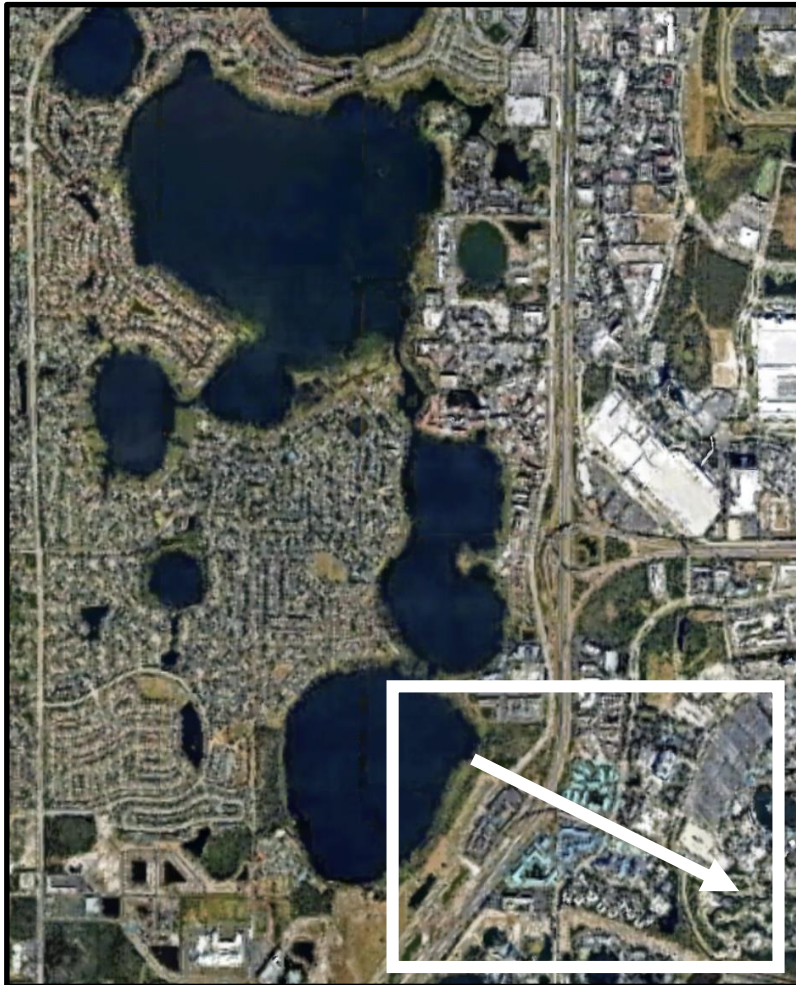
## Big Sand Lake is at the lowest elevation of the Sand Lake Basin



Like any other basin, such as a bathroom sink, water seeks the point of lowest elevation. This is Big Sand Lake. Just like the sink, there is an overflow drain. This water flows into Shingle Creek and naturally has from the beginning. This is needed to protect against catastrophic flooding.



Once in Shingle Creek, the water flows south into Lake Toho, through the Kissimmee chain of lakes, the Kissimmee River, then to Lake Okeechobee.





It's paramount to remain vigilant in preserving the natural splendor of Orange County waterways!

