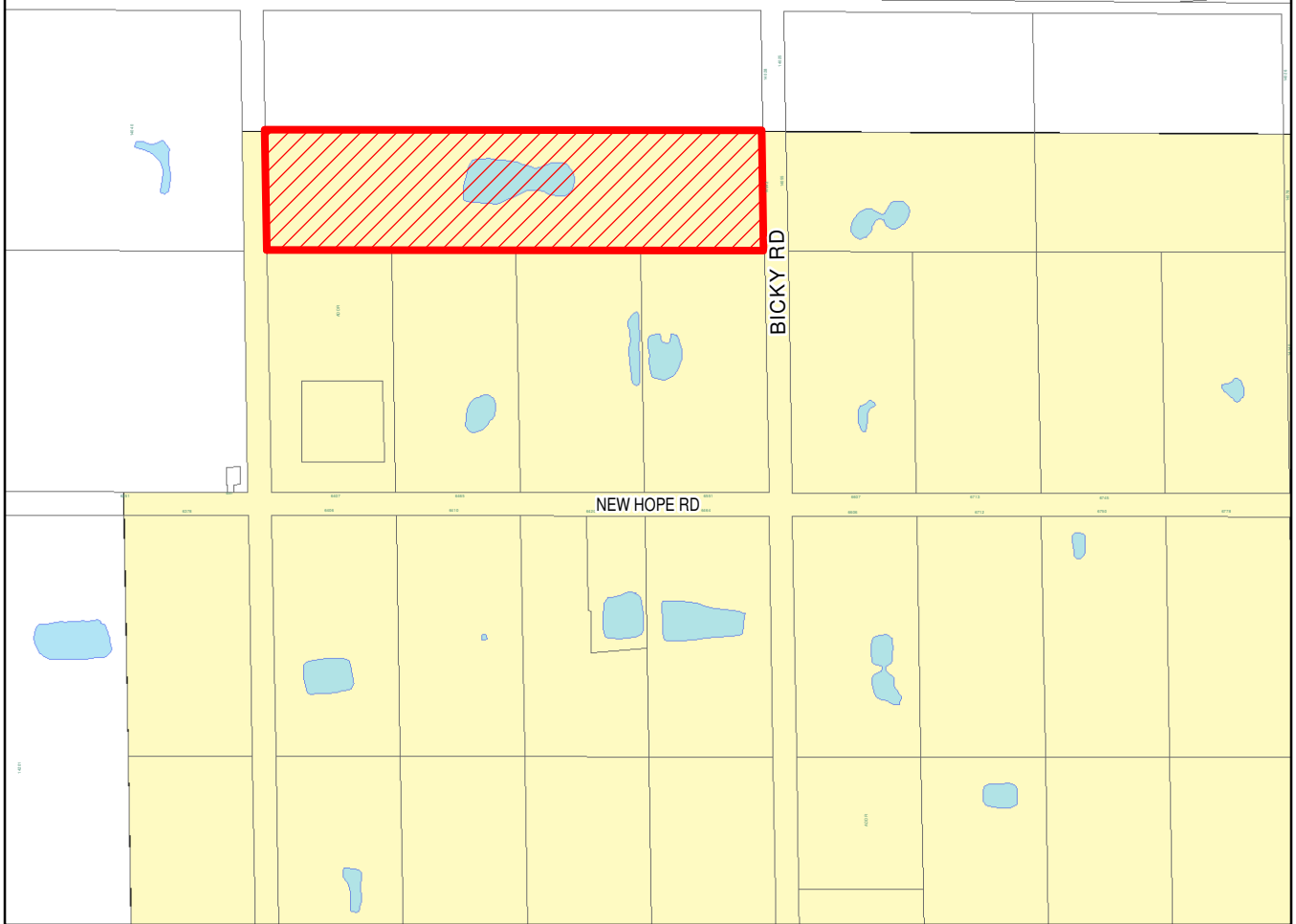


**Bicky Rd  
ANX2024-10005**



LAKE NONA BLVD



1st Reading 09-09-2024  
2nd Reading 10-07-2024

Effective Immediate  
Effective Date 10-07-24

**Annexation  
# TBD**

Address Range:  
Bicky Rd 14040 - 14098 (even)

Comm Dist: 1  
Neighborhood:  
Lake Nona South  
Legal: 9.1 +/- acres  
Pg 330 (new)  
Zip Code: 32824

Received by: Clerk of BCC 10/1/2024 NP  
c: County Commissioners County Mayor County Administrator  
Deputy County Administrator Director Jon Weiss  
Planning, Environmental, & Development Services Director Tanya Wilson  
Planning Division Manager Alberto Vargas  
Planning Administrator Nicolas Thalmueller