

*Board of County Commissioners*

# Public Hearings

**March 10, 2020**

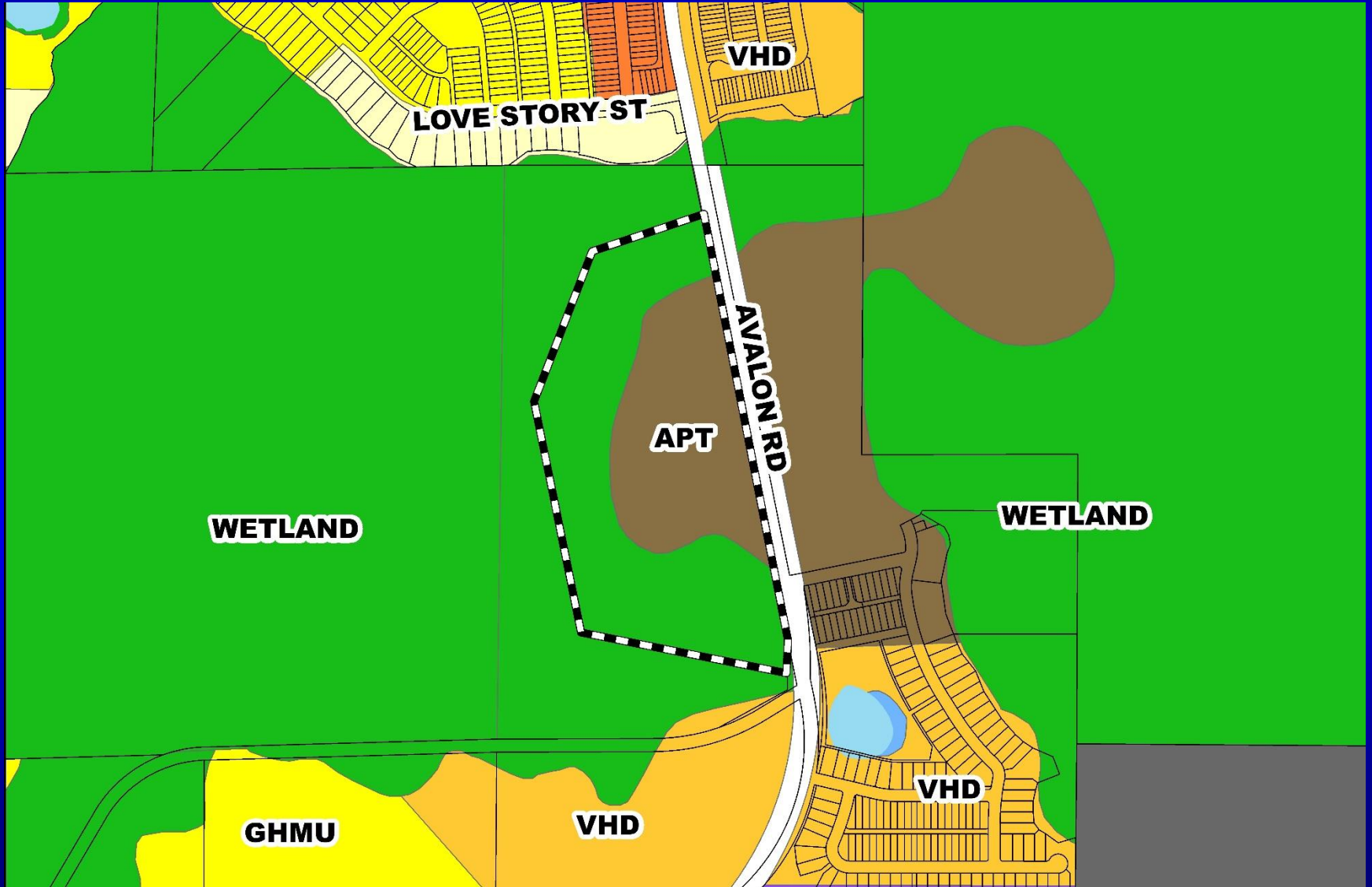


# Horizon West – Village I – Parcel 1 Planned Development / Land Use Plan

- Case:** LUP-19-02-052
- Project Name:** Horizon West – Village I – Parcel 1 Planned Development / Land Use Plan
- Applicant:** Kathy Hattaway, Poulos & Bennett, LLC
- District:** 1
- Acreage:** 37.04 gross acres (overall PD)  
18.41 net developable acres
- Location:** Generally located west of County Road 545, north of Flemings Road, and south of Water Spring Boulevard.
- Request:** To rezone 37.04 gross acres from A-1 (Citrus Rural District) to PD (Planned Development District) in order to construct 300 multi-family residential dwelling units.

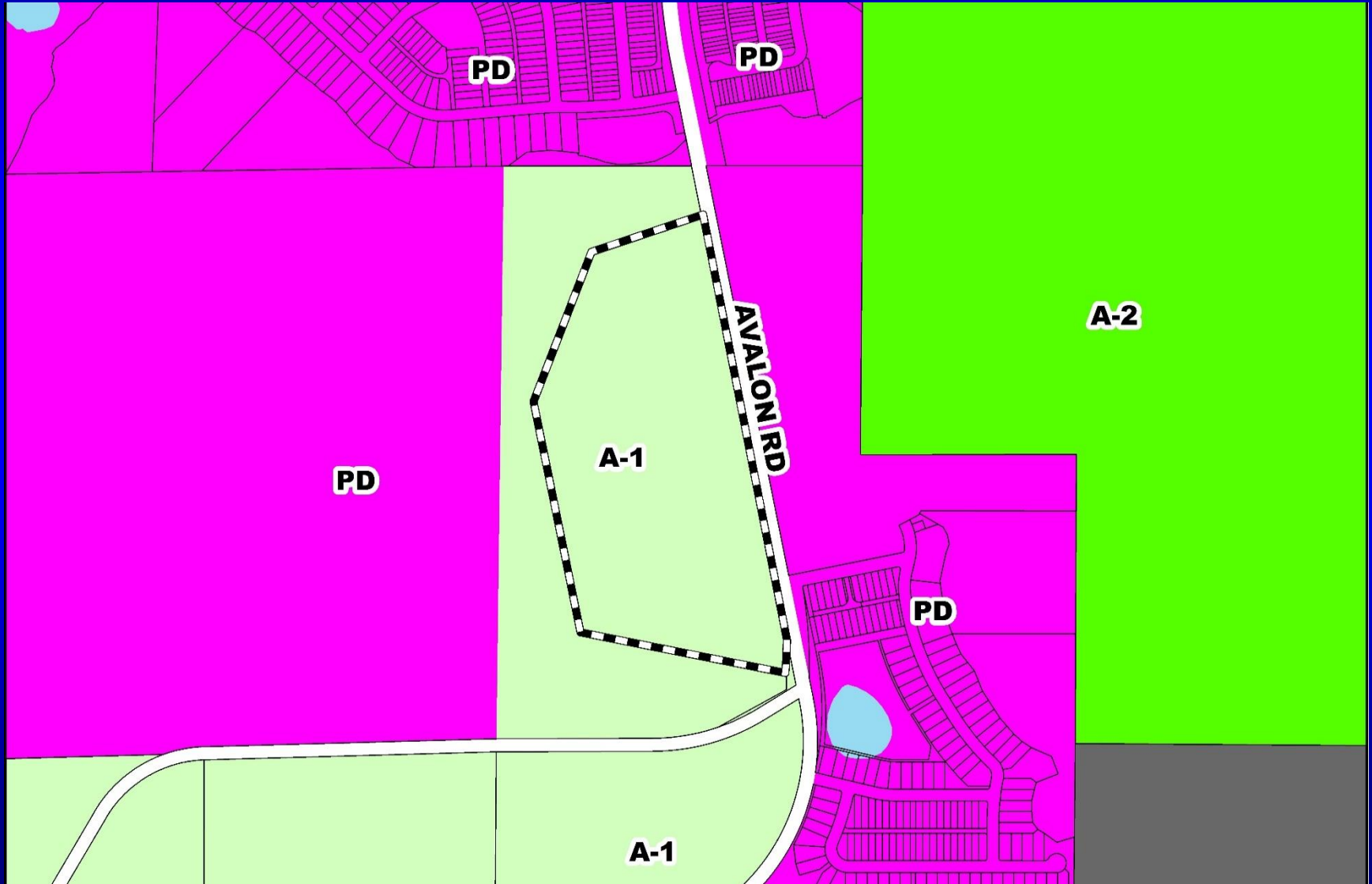


# Horizon West – Village I – Parcel 1 Planned Development / Land Use Plan Future Land Use Map



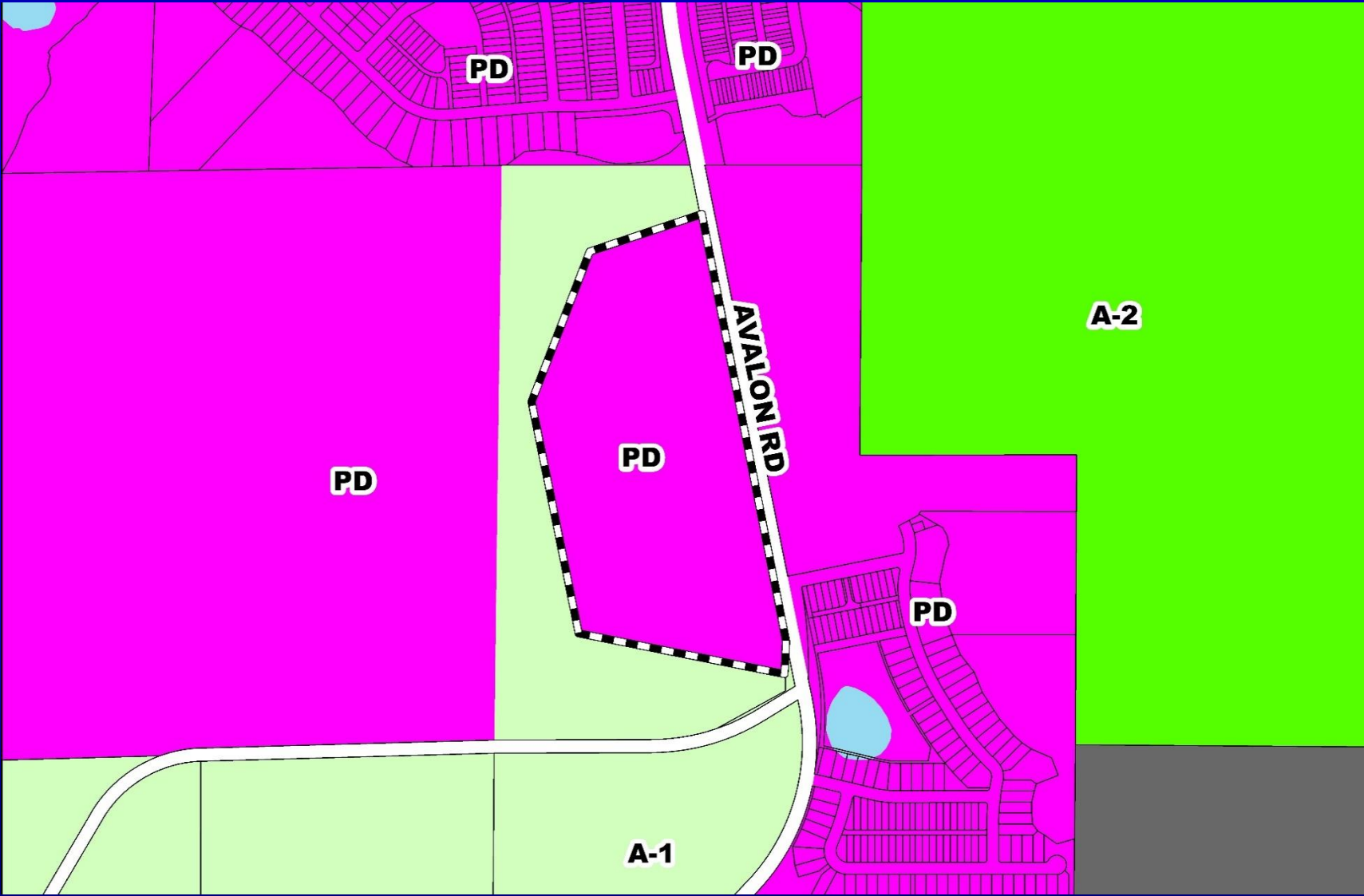


# Horizon West – Village I – Parcel 1 Planned Development / Land Use Plan Zoning Map



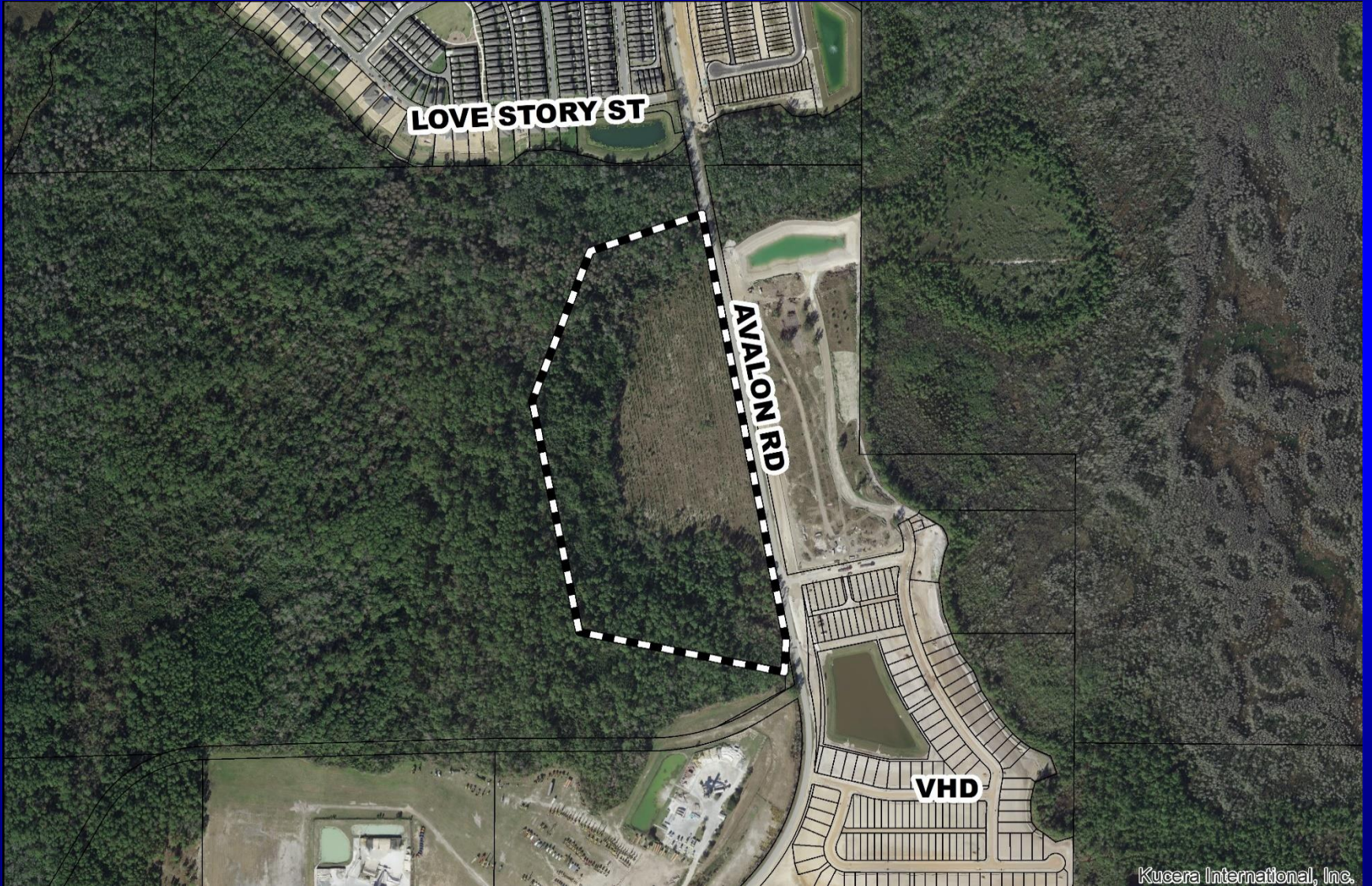


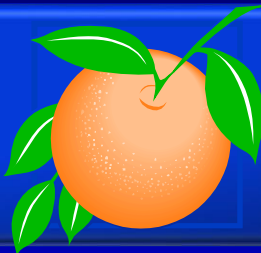
# Horizon West – Village I – Parcel 1 Planned Development / Land Use Plan Proposed Zoning Map



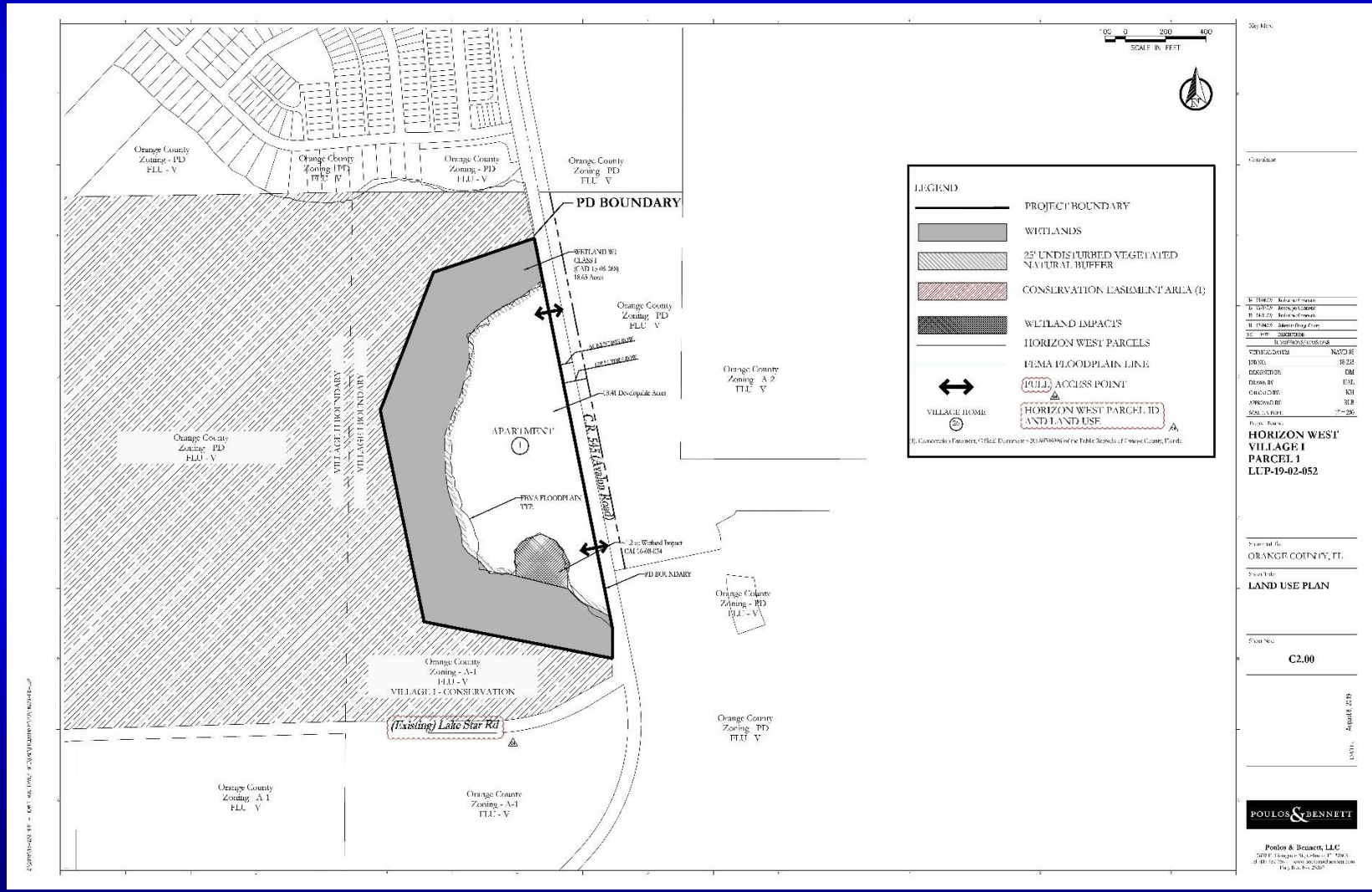


# Horizon West – Village I – Parcel 1 Planned Development / Land Use Plan Aerial Map





# Horizon West – Village I – Parcel 1 Planned Development / Land Use Plan Overall Land Use Plan



**LEGEND**

- PROJECT BOUNDARY
- WETLANDS
- 25' WETLAND BUFFERED VEGETATED NATURAL BUFFER
- CONSERVATION EASEMENT AREA (1)
- WETLAND IMPACTS
- HORIZON WEST PARCELS
- FEMA FLOODPLAIN LINE
- (PULL) ACCESS POINT
- HORIZON WEST PARCEL ID AND LAND USE
- VILLAGE HOME

© 2019 Poulos & Bennett, Official Document - 2019-09-06 of the Public Records of Orange County, Florida.

Scale:																																																																																																																																																							
0 200 400 SCALE IN FEET																																																																																																																																																							
Coordinate:																																																																																																																																																							
<table border="1"> <tr><td>1</td><td>W 194620</td><td>Latitude of Corner</td></tr> <tr><td>2</td><td>127 575'</td><td>Latitude of Corner</td></tr> <tr><td>3</td><td>143 275'</td><td>Latitude of Corner</td></tr> <tr><td>4</td><td>179 620'</td><td>Latitude of Corner</td></tr> <tr><td>5</td><td>186 620'</td><td>Latitude of Corner</td></tr> <tr><td>6</td><td>186 620'</td><td>Latitude of Corner</td></tr> <tr><td>7</td><td>186 620'</td><td>Latitude of Corner</td></tr> <tr><td>8</td><td>186 620'</td><td>Latitude of Corner</td></tr> <tr><td>9</td><td>186 620'</td><td>Latitude of Corner</td></tr> <tr><td>10</td><td>186 620'</td><td>Latitude of Corner</td></tr> <tr><td>11</td><td>186 620'</td><td>Latitude of Corner</td></tr> <tr><td>12</td><td>186 620'</td><td>Latitude of Corner</td></tr> <tr><td>13</td><td>186 620'</td><td>Latitude of Corner</td></tr> <tr><td>14</td><td>186 620'</td><td>Latitude of Corner</td></tr> <tr><td>15</td><td>186 620'</td><td>Latitude of Corner</td></tr> <tr><td>16</td><td>186 620'</td><td>Latitude of Corner</td></tr> <tr><td>17</td><td>186 620'</td><td>Latitude of Corner</td></tr> <tr><td>18</td><td>186 620'</td><td>Latitude of Corner</td></tr> <tr><td>19</td><td>186 620'</td><td>Latitude of Corner</td></tr> <tr><td>20</td><td>186 620'</td><td>Latitude of Corner</td></tr> <tr><td>21</td><td>186 620'</td><td>Latitude of Corner</td></tr> <tr><td>22</td><td>186 620'</td><td>Latitude of Corner</td></tr> <tr><td>23</td><td>186 620'</td><td>Latitude of Corner</td></tr> <tr><td>24</td><td>186 620'</td><td>Latitude of Corner</td></tr> <tr><td>25</td><td>186 620'</td><td>Latitude of Corner</td></tr> <tr><td>26</td><td>186 620'</td><td>Latitude of Corner</td></tr> <tr><td>27</td><td>186 620'</td><td>Latitude of Corner</td></tr> <tr><td>28</td><td>186 620'</td><td>Latitude of Corner</td></tr> <tr><td>29</td><td>186 620'</td><td>Latitude of Corner</td></tr> <tr><td>30</td><td>186 620'</td><td>Latitude of Corner</td></tr> <tr><td>31</td><td>186 620'</td><td>Latitude of Corner</td></tr> <tr><td>32</td><td>186 620'</td><td>Latitude of Corner</td></tr> <tr><td>33</td><td>186 620'</td><td>Latitude of Corner</td></tr> <tr><td>34</td><td>186 620'</td><td>Latitude of Corner</td></tr> <tr><td>35</td><td>186 620'</td><td>Latitude of Corner</td></tr> <tr><td>36</td><td>186 620'</td><td>Latitude of Corner</td></tr> <tr><td>37</td><td>186 620'</td><td>Latitude of Corner</td></tr> <tr><td>38</td><td>186 620'</td><td>Latitude of Corner</td></tr> <tr><td>39</td><td>186 620'</td><td>Latitude of Corner</td></tr> <tr><td>40</td><td>186 620'</td><td>Latitude of Corner</td></tr> <tr><td>41</td><td>186 620'</td><td>Latitude of Corner</td></tr> <tr><td>42</td><td>186 620'</td><td>Latitude of Corner</td></tr> <tr><td>43</td><td>186 620'</td><td>Latitude of Corner</td></tr> <tr><td>44</td><td>186 620'</td><td>Latitude of Corner</td></tr> <tr><td>45</td><td>186 620'</td><td>Latitude of Corner</td></tr> <tr><td>46</td><td>186 620'</td><td>Latitude of Corner</td></tr> <tr><td>47</td><td>186 620'</td><td>Latitude of Corner</td></tr> <tr><td>48</td><td>186 620'</td><td>Latitude of Corner</td></tr> <tr><td>49</td><td>186 620'</td><td>Latitude of Corner</td></tr> <tr><td>50</td><td>186 620'</td><td>Latitude of Corner</td></tr> </table>	1	W 194620	Latitude of Corner	2	127 575'	Latitude of Corner	3	143 275'	Latitude of Corner	4	179 620'	Latitude of Corner	5	186 620'	Latitude of Corner	6	186 620'	Latitude of Corner	7	186 620'	Latitude of Corner	8	186 620'	Latitude of Corner	9	186 620'	Latitude of Corner	10	186 620'	Latitude of Corner	11	186 620'	Latitude of Corner	12	186 620'	Latitude of Corner	13	186 620'	Latitude of Corner	14	186 620'	Latitude of Corner	15	186 620'	Latitude of Corner	16	186 620'	Latitude of Corner	17	186 620'	Latitude of Corner	18	186 620'	Latitude of Corner	19	186 620'	Latitude of Corner	20	186 620'	Latitude of Corner	21	186 620'	Latitude of Corner	22	186 620'	Latitude of Corner	23	186 620'	Latitude of Corner	24	186 620'	Latitude of Corner	25	186 620'	Latitude of Corner	26	186 620'	Latitude of Corner	27	186 620'	Latitude of Corner	28	186 620'	Latitude of Corner	29	186 620'	Latitude of Corner	30	186 620'	Latitude of Corner	31	186 620'	Latitude of Corner	32	186 620'	Latitude of Corner	33	186 620'	Latitude of Corner	34	186 620'	Latitude of Corner	35	186 620'	Latitude of Corner	36	186 620'	Latitude of Corner	37	186 620'	Latitude of Corner	38	186 620'	Latitude of Corner	39	186 620'	Latitude of Corner	40	186 620'	Latitude of Corner	41	186 620'	Latitude of Corner	42	186 620'	Latitude of Corner	43	186 620'	Latitude of Corner	44	186 620'	Latitude of Corner	45	186 620'	Latitude of Corner	46	186 620'	Latitude of Corner	47	186 620'	Latitude of Corner	48	186 620'	Latitude of Corner	49	186 620'	Latitude of Corner	50	186 620'	Latitude of Corner	
1	W 194620	Latitude of Corner																																																																																																																																																					
2	127 575'	Latitude of Corner																																																																																																																																																					
3	143 275'	Latitude of Corner																																																																																																																																																					
4	179 620'	Latitude of Corner																																																																																																																																																					
5	186 620'	Latitude of Corner																																																																																																																																																					
6	186 620'	Latitude of Corner																																																																																																																																																					
7	186 620'	Latitude of Corner																																																																																																																																																					
8	186 620'	Latitude of Corner																																																																																																																																																					
9	186 620'	Latitude of Corner																																																																																																																																																					
10	186 620'	Latitude of Corner																																																																																																																																																					
11	186 620'	Latitude of Corner																																																																																																																																																					
12	186 620'	Latitude of Corner																																																																																																																																																					
13	186 620'	Latitude of Corner																																																																																																																																																					
14	186 620'	Latitude of Corner																																																																																																																																																					
15	186 620'	Latitude of Corner																																																																																																																																																					
16	186 620'	Latitude of Corner																																																																																																																																																					
17	186 620'	Latitude of Corner																																																																																																																																																					
18	186 620'	Latitude of Corner																																																																																																																																																					
19	186 620'	Latitude of Corner																																																																																																																																																					
20	186 620'	Latitude of Corner																																																																																																																																																					
21	186 620'	Latitude of Corner																																																																																																																																																					
22	186 620'	Latitude of Corner																																																																																																																																																					
23	186 620'	Latitude of Corner																																																																																																																																																					
24	186 620'	Latitude of Corner																																																																																																																																																					
25	186 620'	Latitude of Corner																																																																																																																																																					
26	186 620'	Latitude of Corner																																																																																																																																																					
27	186 620'	Latitude of Corner																																																																																																																																																					
28	186 620'	Latitude of Corner																																																																																																																																																					
29	186 620'	Latitude of Corner																																																																																																																																																					
30	186 620'	Latitude of Corner																																																																																																																																																					
31	186 620'	Latitude of Corner																																																																																																																																																					
32	186 620'	Latitude of Corner																																																																																																																																																					
33	186 620'	Latitude of Corner																																																																																																																																																					
34	186 620'	Latitude of Corner																																																																																																																																																					
35	186 620'	Latitude of Corner																																																																																																																																																					
36	186 620'	Latitude of Corner																																																																																																																																																					
37	186 620'	Latitude of Corner																																																																																																																																																					
38	186 620'	Latitude of Corner																																																																																																																																																					
39	186 620'	Latitude of Corner																																																																																																																																																					
40	186 620'	Latitude of Corner																																																																																																																																																					
41	186 620'	Latitude of Corner																																																																																																																																																					
42	186 620'	Latitude of Corner																																																																																																																																																					
43	186 620'	Latitude of Corner																																																																																																																																																					
44	186 620'	Latitude of Corner																																																																																																																																																					
45	186 620'	Latitude of Corner																																																																																																																																																					
46	186 620'	Latitude of Corner																																																																																																																																																					
47	186 620'	Latitude of Corner																																																																																																																																																					
48	186 620'	Latitude of Corner																																																																																																																																																					
49	186 620'	Latitude of Corner																																																																																																																																																					
50	186 620'	Latitude of Corner																																																																																																																																																					
Project No.:	<b>HORIZON WEST VILLAGE I PARCEL 1 LUP-19-02-052</b>																																																																																																																																																						
Version No.:	ORANGE COUNTY, FL.																																																																																																																																																						
Version No.:	<b>LAND USE PLAN</b>																																																																																																																																																						
Plan No.:	<b>C2.00</b>																																																																																																																																																						
Date:	August 27, 2019																																																																																																																																																						
<p style="font-size: small;">Poulos &amp; Bennett, LLC 20771 Highway 90, Suite 117, Suite 1 Orlando, FL 32817 Tel: 407-512-7200 www.poulosandbennett.com Reg. No. PC 2207</p>																																																																																																																																																							



# Updated Condition #8

8. Pursuant to the BCC's acceptance of the Village I Term Sheet on November 13, 2018, this project shall comply with the terms and conditions of the Village I Road Network Agreement recorded at Doc# 20200109451, Public Records of Orange County, Florida, as may be amended from time to time.





## New Condition #20

20. Unless the property is otherwise vested or exempt, the applicant must apply for and obtain a capacity encumbrance letter in accordance with Section 12.1 of the Village I Road Network Agreement recorded at Doc# 20200109451, Public Records of Orange County, Florida, as may be amended from time to time, and must apply for and obtain a capacity reservation certificate prior to approval of the plat. Nothing in this condition, and nothing in the decision to approve this land use plan, shall be construed as a guarantee that the applicant will be able to satisfy the requirements for obtaining a capacity encumbrance letter or a capacity reservation certificate.



# Action Requested

**Make a finding of consistency with the Comprehensive Plan (CP) and approve the Horizon West – Village I - Parcel 1 Planned Development / Land Use Plan (PD/LUP) dated “Received August 14, 2019”, subject to the conditions listed under the PZC Recommendation in the Staff Report, as amended, and**

**Approve the Adequate Public Facilities Agreement for Horizon West – Village I – Parcel 1 PD by and between Spring Grove Properties, LLC and Orange County.**

**District 1**



## Combined Actions Requested

- **Acceptance of the findings and recommendation of the Environmental Protection Division staff to approve the request for Conservation Area Impact Permit No. CAI-16-08-034 for Spring Grove Properties, LLC.**
- **Make a finding of consistency with the Comprehensive Plan (CP) and approve the Horizon West – Village I - Parcel 1 Planned Development / Land Use Plan (PD/LUP) dated “Received August 14, 2019”, subject to the conditions listed under the PZC Recommendation in the Staff Report, as amended.**
- **Approve the Adequate Public Facilities Agreement for Horizon West – Village I – Parcel 1 PD by and between Spring Grove Properties, LLC and Orange County.**

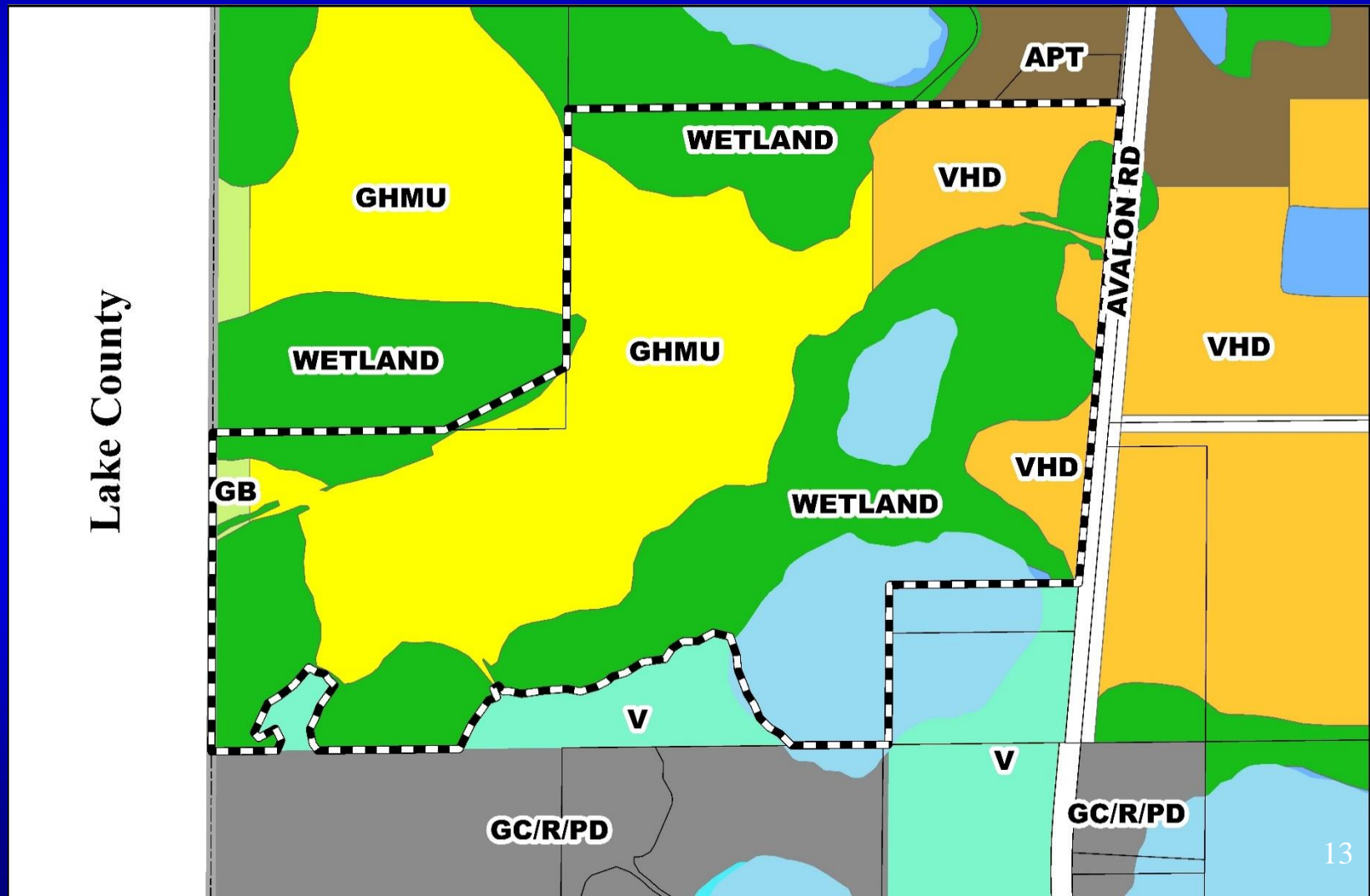


# Horizon West – Village I – Serenade at Ovation Planned Development / Land Use Plan

- Case:** LUP-18-10-354
- Project Name:** Horizon West – Village I – Serenade at Ovation Planned Development / Land Use Plan
- Applicant:** Kathy Hattaway, Poulos & Bennett, LLC
- District:** 1
- Acreage:** 156.84 gross acres (overall PD)  
54.20 net developable acres
- Location:** South of Flemings Road and west of Avalon Road
- Request:** To rezone 155.4 gross acres from A-1 (Citrus Rural District) and A-2 (Farmland Rural District) to PD (Planned Development District) and transfer 1.44 acres from the Spring Grove - Jaffers PD into this PD, for a total of 156.84 acres, in order to construct 291 attached and detached residential dwelling units. Six (6) waivers from Orange County Code are associated with this request.

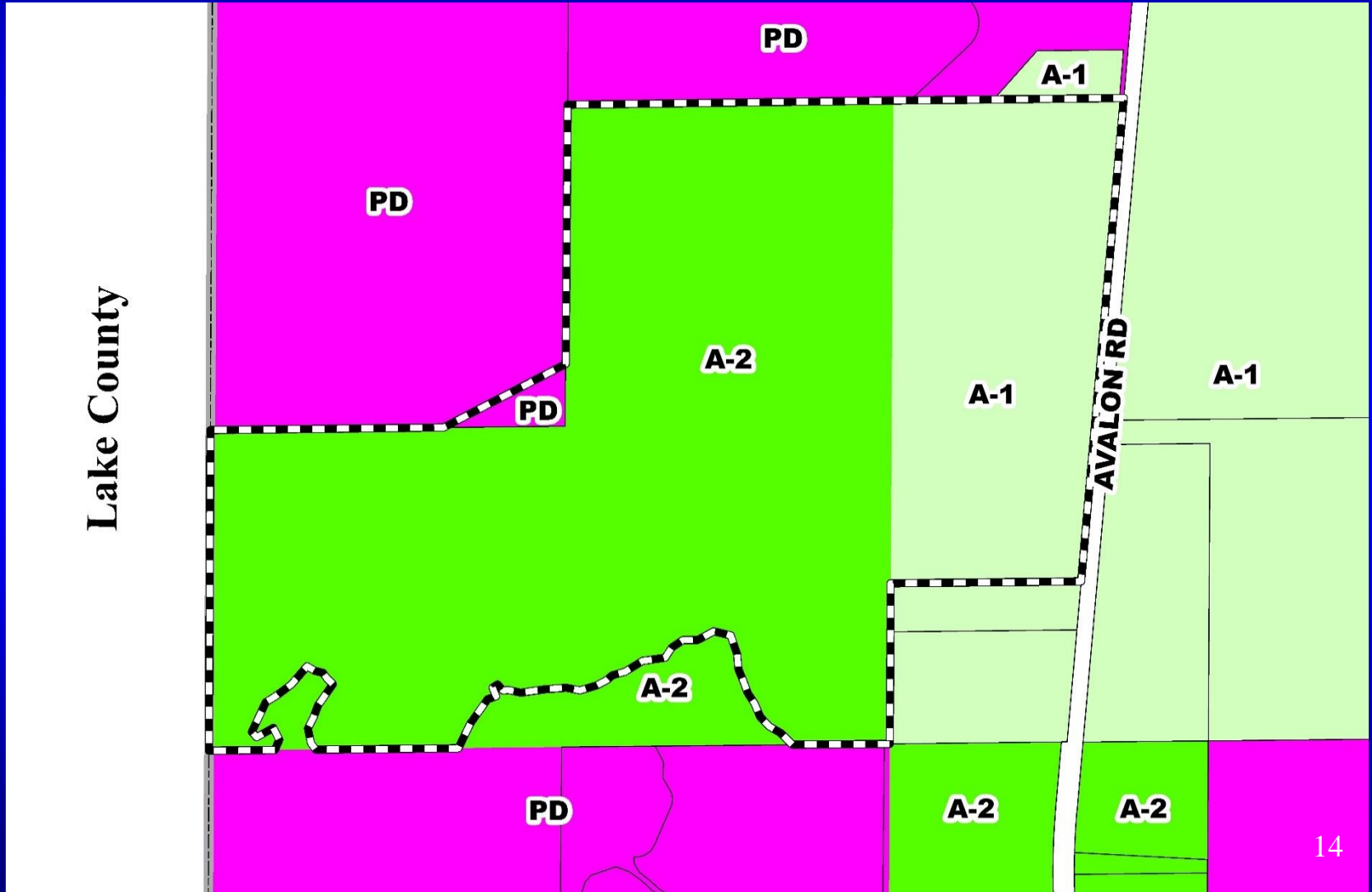


# Horizon West – Village I – Serenade at Ovation Planned Development / Land Use Plan Future Land Use Map



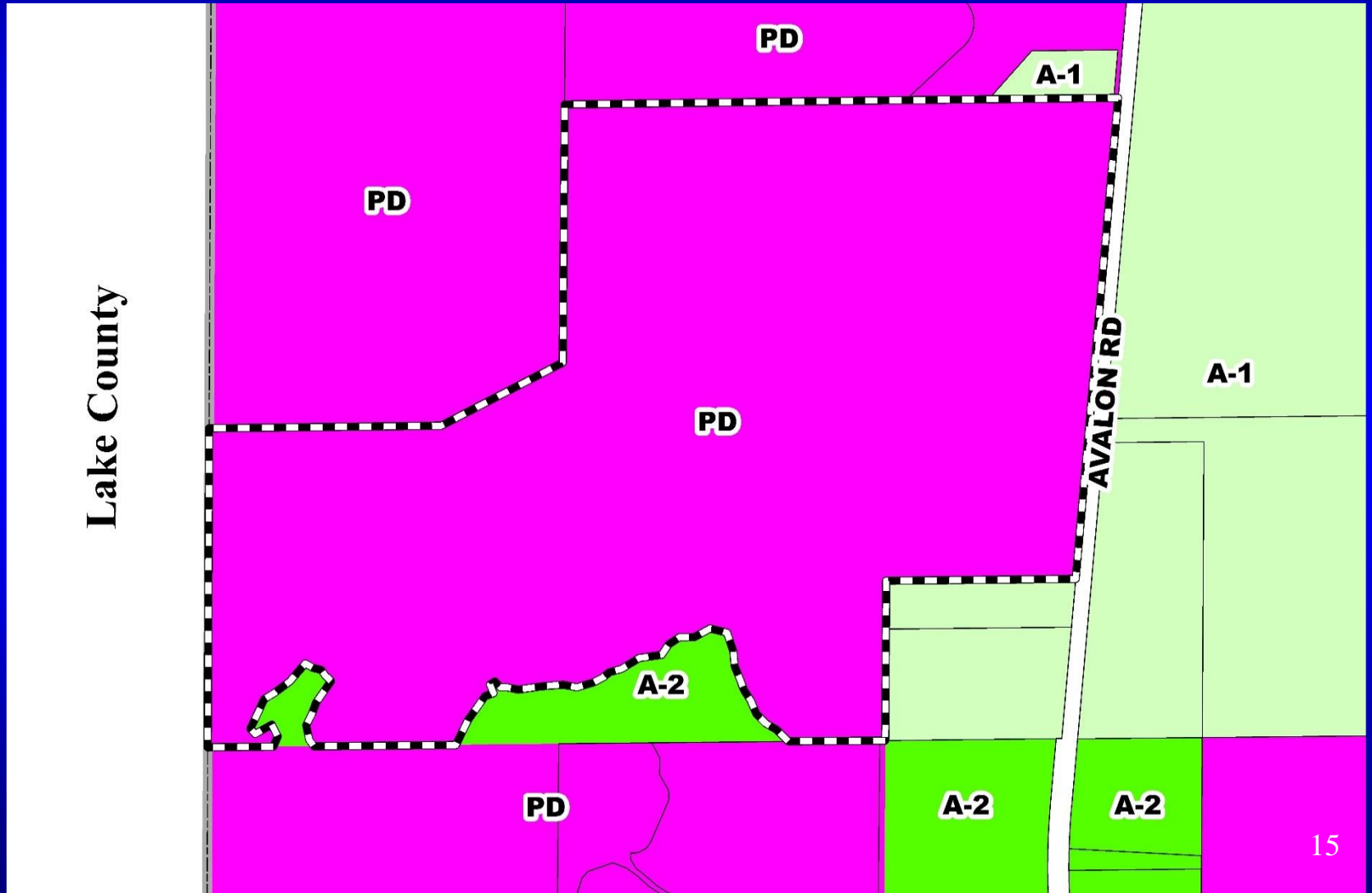


# Horizon West – Village I – Serenade at Ovation Planned Development / Land Use Plan Zoning Map





# Horizon West – Village I – Serenade at Ovation Planned Development / Land Use Plan Proposed Zoning Map





# Horizon West – Village I – Serenade at Ovation Planned Development / Land Use Plan Aerial Map









## Updated Condition #6

6. Unless the property is otherwise vested or exempt, the applicant must apply for and obtain a capacity encumbrance letter in accordance with Section 12.1 of the Village I Road Network Agreement recorded at Doc# 20200109451, Public Records of Orange County, Florida, as may be amended from time to time, and must apply for and obtain a capacity reservation certificate prior to approval of the plat. Nothing in this condition, and nothing in the decision to approve this land use plan, shall be construed as a guarantee that the applicant will be able to satisfy the requirements for obtaining a capacity encumbrance letter or a capacity reservation certificate.



# Updated Condition #7

7. Pursuant to the BCC's acceptance of the Village I Term Sheet on November 13, 2018, this project shall comply with the terms and conditions of the Village I Road Network Agreement recorded at Doc# 20200109451, Public Records of Orange County, Florida, as may be amended from time to time.



## Strike 21.f

~~21.f. A waiver from Orange County Code Section 30-551 to allow the project to obtain a CEL upon the project becoming subject to the Village I Road Network Agreement, provided that all other requirements for obtaining a CEL have been met by the applicant. The foregoing is in lieu of allowing the project to obtain a CEL prior to the issuance of trips for the project under the Village I Road Network Agreement.~~

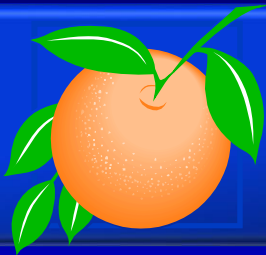


# Action Requested

**Make a finding of consistency with the Comprehensive Plan (CP) and approve the Horizon West – Village I - Serenade at Ovation Planned Development / Land Use Plan (PD/LUP) dated “Received November 25, 2019”, subject to the conditions listed under the PZC Recommendation in the Staff Report, as amended, and**

**Approve the Adequate Public Facilities Agreement for Horizon West Village I Serenade at Ovation PD by and between Spring Grove LLC, BB Groves LLC, and Orange County.**

**District 1**



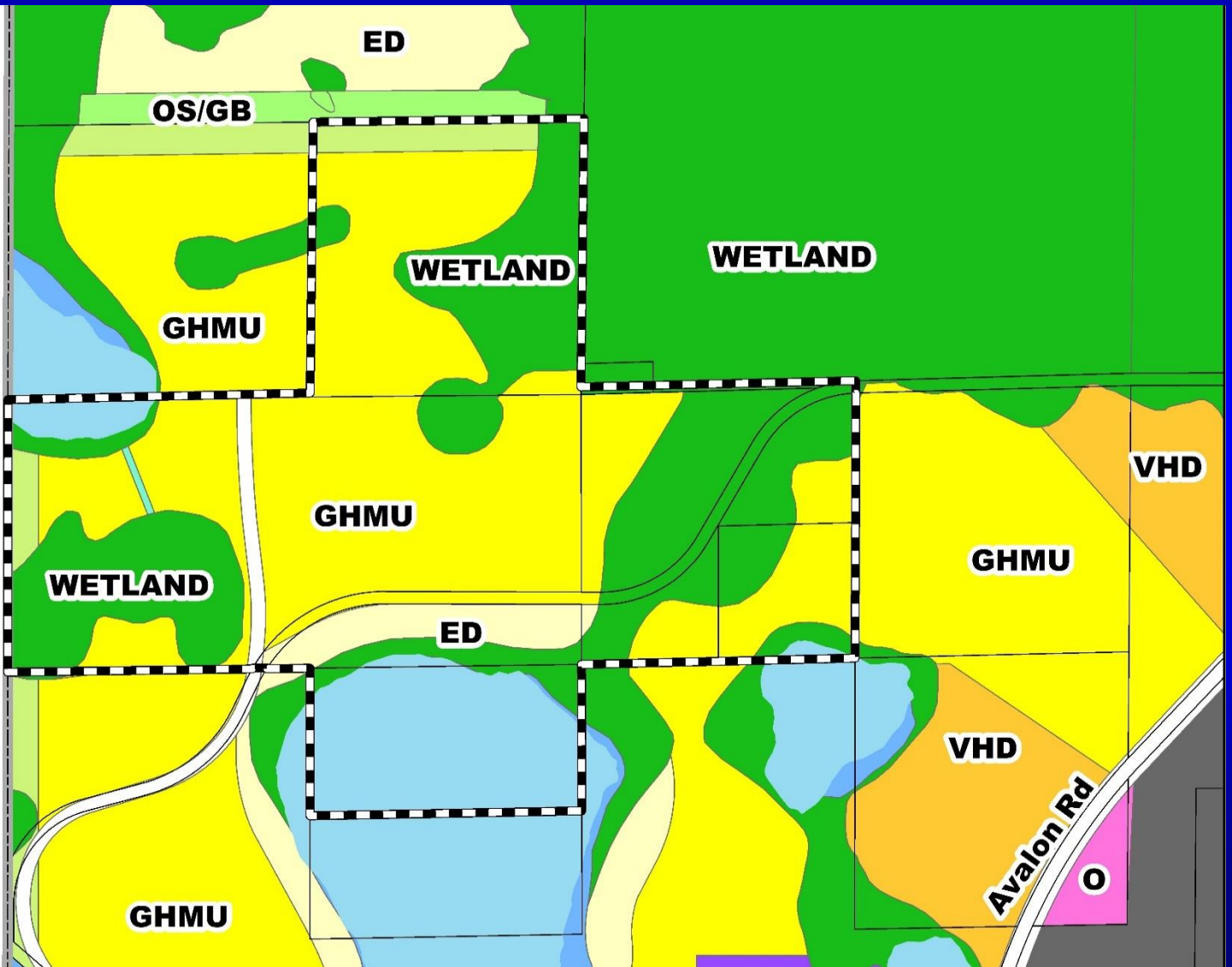
# Horizon West – Village I - Cross Planned Development / Land Use Plan

- Case:** LUP-18-12-410
- Project Name:** Horizon West – Village I – Cross Planned Development / Land Use Plan
- Applicant:** Kathy Hattaway, Poulos & Bennett, LLC
- District:** 1
- Acreage:** 186.9 gross acres (overall PD)  
66.9 net developable acres
- Location:** North of Flemings Road, south of Water Spring Boulevard, east of Lake County Line, and west of Avalon Road.
- Request:** To to rezone 186.90 gross acres from A-1 (Citrus Rural District) and A-2 (Farmland Rural District) to PD (Planned Development District) in order to construct 385 attached and detached single-family dwelling units. Seven (7) waivers from Orange County Code are associated with this request.



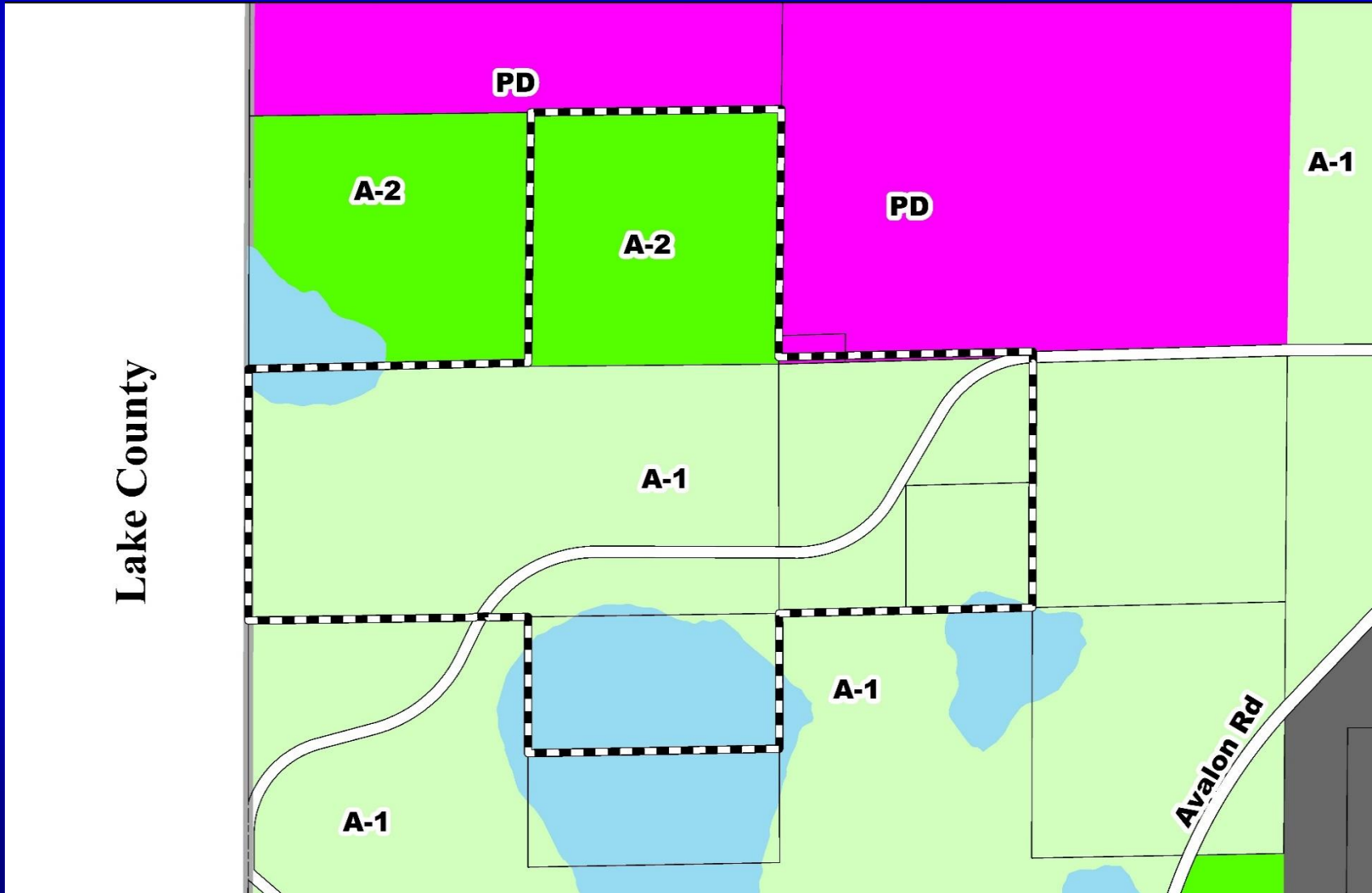
# Horizon West – Village I - Cross Planned Development / Land Use Plan Future Land Use Map

Lake County





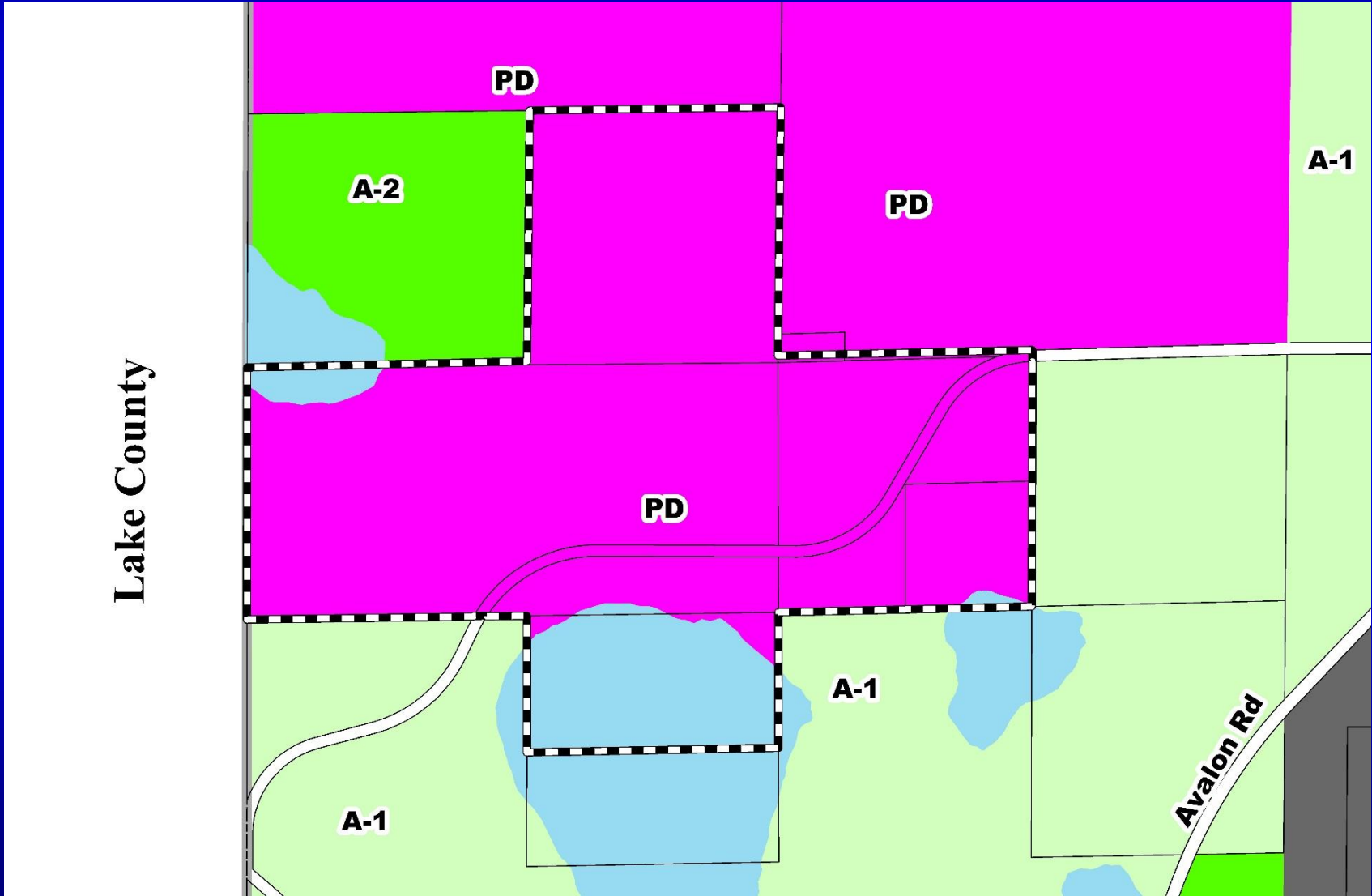
# Horizon West – Village I - Cross Planned Development / Land Use Plan Zoning Map







# Horizon West – Village I - Cross Planned Development / Land Use Plan Proposed Zoning Map





# Horizon West – Village I - Cross Planned Development / Land Use Plan Aerial Map







# Updated Condition #6

6. Pursuant to the BCC's acceptance of the Village I Term Sheet on November 13, 2018, this project shall comply with the terms and conditions of the Village I Road Network Agreement recorded at Doc# 20200109451, Public Records of Orange County, Florida, as may be amended from time to time.



# New Condition #21

21. Unless the property is otherwise vested or exempt, the applicant must apply for and obtain a capacity encumbrance letter in accordance with Section 12.1 of the Village I Road Network Agreement recorded at Doc# 20200109451, Public Records of Orange County, Florida, as may be amended from time to time, and must apply for and obtain a capacity reservation certificate prior to approval of the plat. Nothing in this condition, and nothing in the decision to approve this land use plan, shall be construed as a guarantee that the applicant will be able to satisfy the requirements for obtaining a capacity encumbrance letter or a capacity reservation certificate.



## Strike 21.f

~~21.f. A waiver from Orange County Code Section 30-551 to allow the project to obtain a CEL upon the project becoming subject to the Village I Road Network Agreement, provided that all other requirements for obtaining a CEL have been met by the applicant. The foregoing is in lieu of allowing the project to obtain a CEL prior to the issuance of trips for the project under the Village I Road Network Agreement.~~



# Action Requested

**Make a finding of consistency with the Comprehensive Plan (CP) and approve the Horizon West - Village I - Cross Planned Development / Land Use Plan (PD/LUP) dated “Received October 17, 2019”, subject to the conditions listed under the PZC Recommendation in the Staff Report, as amended, and**

**Approve the Adequate Public Facilities Agreement for Horizon West Village I – Cross PD by and between Spring Grove LLC and Orange County.**

**District 1**



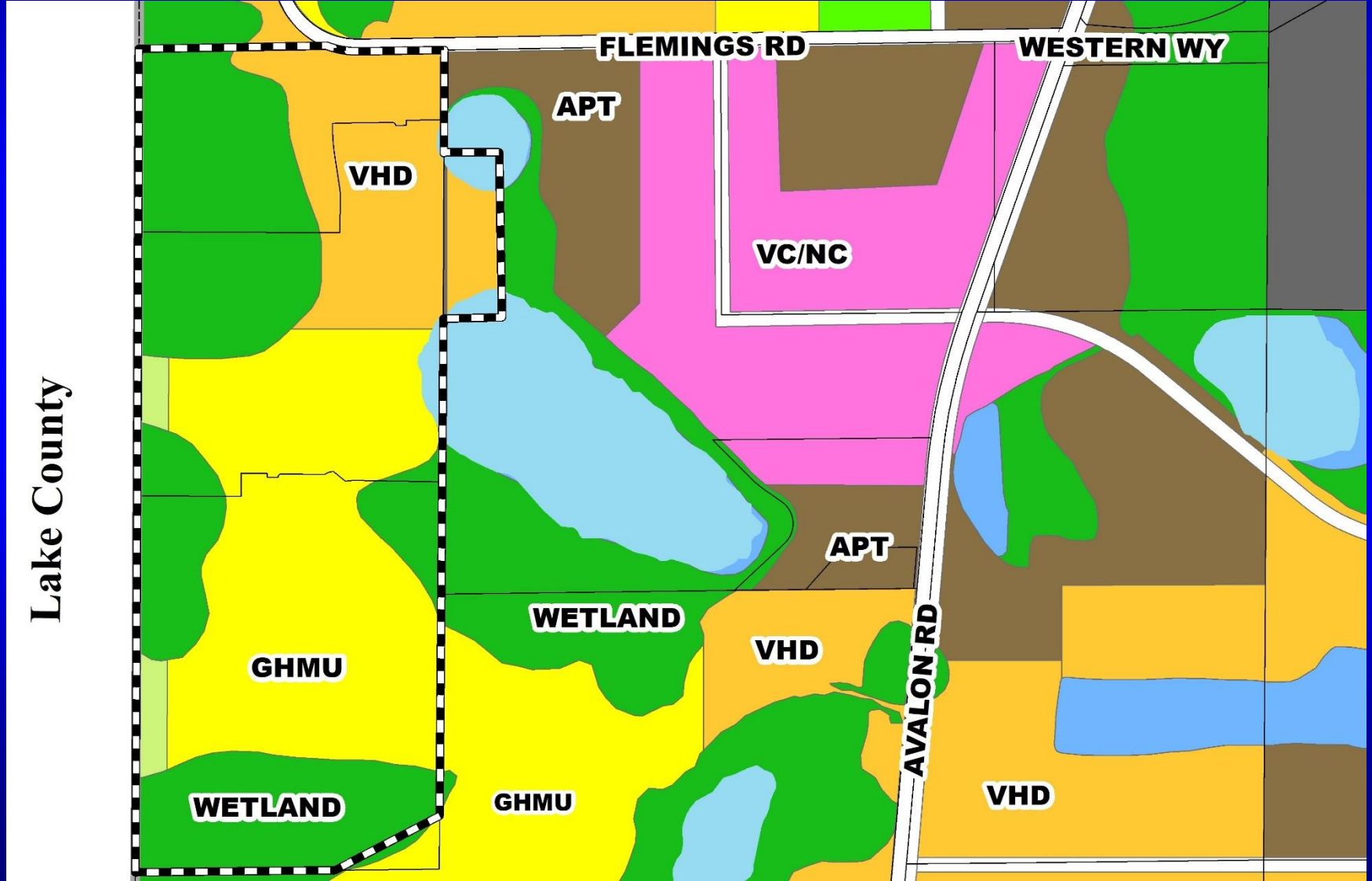
# Spring Grove - Jaffers Planned Development / Land Use Plan

- Case:** CDR-18-10-353
- Project Name:** Spring Grove - Jaffers Planned Development / Land Use Plan
- Applicant:** Kathy Hattaway, Poulos & Bennett, LLC
- District:** 1
- Acreage:** 136.94 gross acres
- Location:** Generally located south of Flemings Road, west of Avalon Road, and east of the Lake County Line.
- Request:** To transfer 1.44 gross acres to the Serenade at Ovation PD (LUP-18-10-354) and revise development tables based on removal of that property. No change in the development program is proposed.



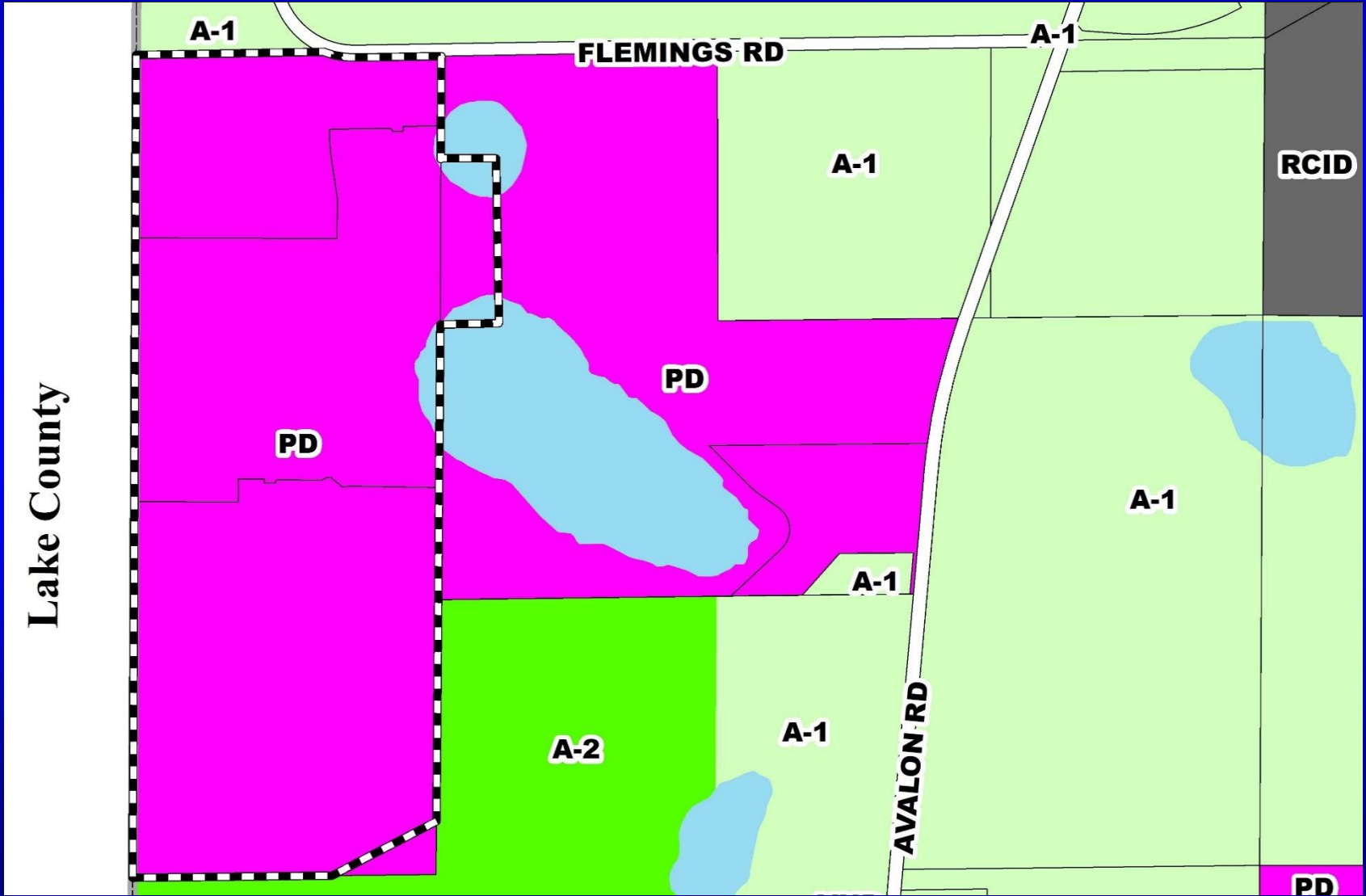


# Spring Grove - Jaffers Planned Development / Land Use Plan Future Land Use Map



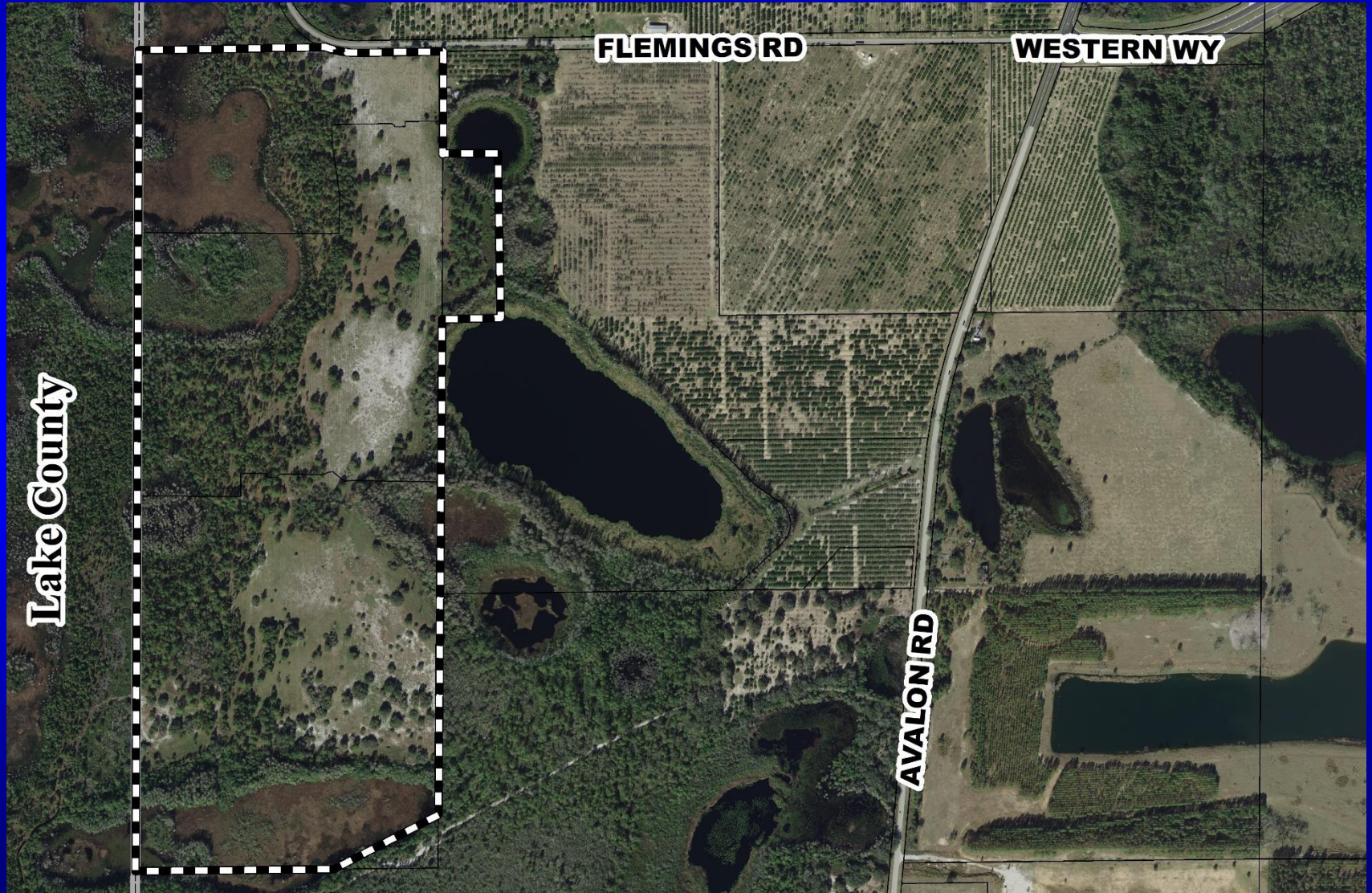


# Spring Grove - Jaffers Planned Development / Land Use Plan Zoning Map



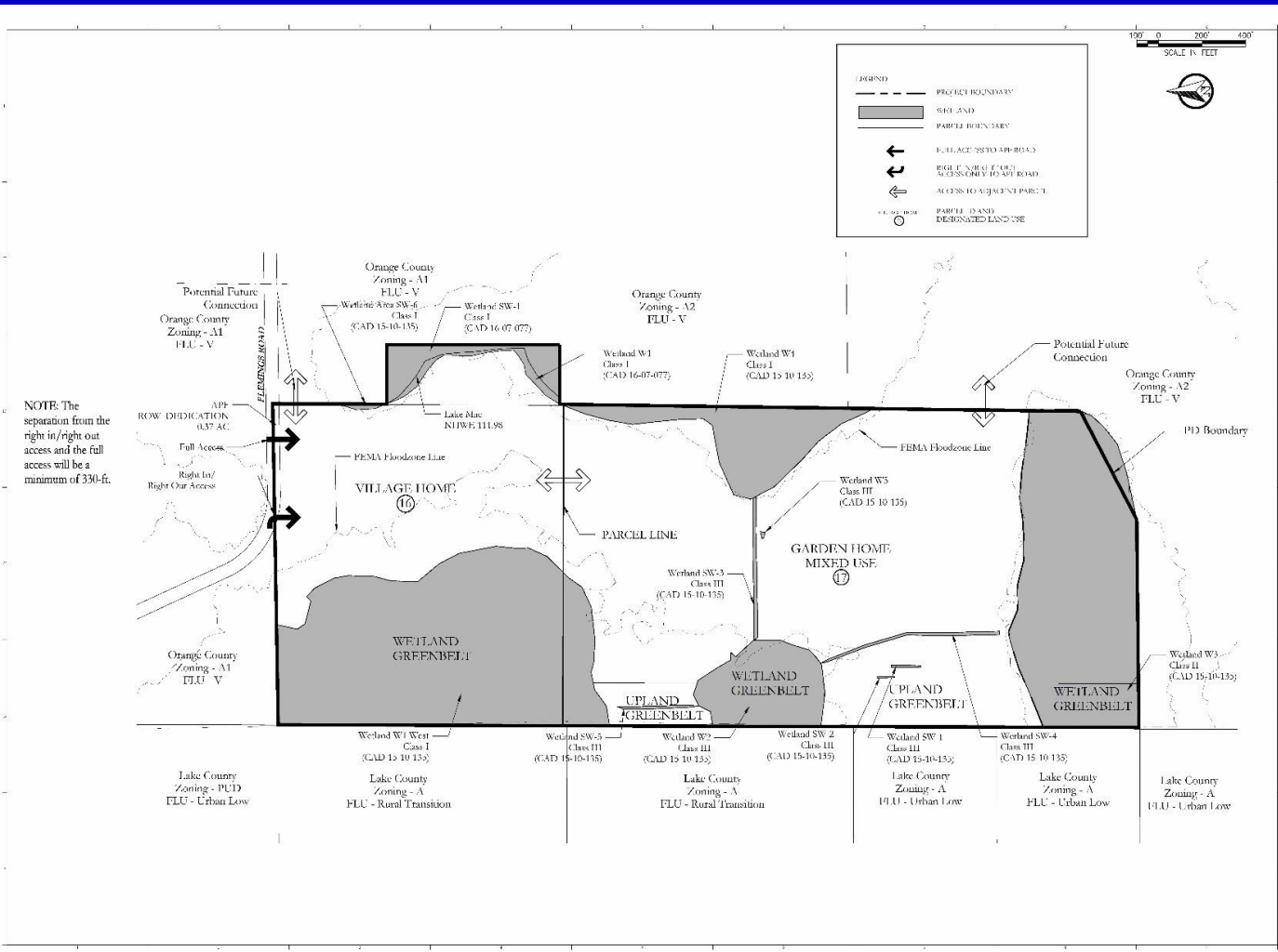


# Spring Grove - Jaffers Planned Development / Land Use Plan Aerial Map





# Spring Grove - Jaffers Planned Development / Land Use Plan Overall Land Use Plan



NOTE: The separation from the right in/right out access will be a minimum of 330-ft.

Key Map:

Scale: 1" = 400'

Legend:

- PROJECT BOUNDARY
- WETLAND
- PARCEL BOUNDARY
- FULL ACCESS TO ADJACENT PARCELS
- RIGHT IN/RIGHT OUT ACCESS TO ADJACENT PARCELS
- ACCESS TO ADJACENT PARCELS
- POTENTIAL FUTURE DESIGNATED LAND USE

4. BMP Mitigation	
5. SWP Mitigation	
6. EDCB Mitigation	
7. EDCB Mitigation	
8. BMP Mitigation	
9. SWP Mitigation	
10. EDCB Mitigation	
11. EDCB Mitigation	
12. EDCB Mitigation	
13. EDCB Mitigation	
14. EDCB Mitigation	
15. EDCB Mitigation	
16. EDCB Mitigation	
17. EDCB Mitigation	
18. EDCB Mitigation	
19. EDCB Mitigation	
20. EDCB Mitigation	
21. EDCB Mitigation	
22. EDCB Mitigation	
23. EDCB Mitigation	
24. EDCB Mitigation	
25. EDCB Mitigation	
26. EDCB Mitigation	
27. EDCB Mitigation	
28. EDCB Mitigation	
29. EDCB Mitigation	
30. EDCB Mitigation	
31. EDCB Mitigation	
32. EDCB Mitigation	
33. EDCB Mitigation	
34. EDCB Mitigation	
35. EDCB Mitigation	
36. EDCB Mitigation	
37. EDCB Mitigation	
38. EDCB Mitigation	
39. EDCB Mitigation	
40. EDCB Mitigation	
41. EDCB Mitigation	
42. EDCB Mitigation	
43. EDCB Mitigation	
44. EDCB Mitigation	
45. EDCB Mitigation	
46. EDCB Mitigation	
47. EDCB Mitigation	
48. EDCB Mitigation	
49. EDCB Mitigation	
50. EDCB Mitigation	
51. EDCB Mitigation	
52. EDCB Mitigation	
53. EDCB Mitigation	
54. EDCB Mitigation	
55. EDCB Mitigation	
56. EDCB Mitigation	
57. EDCB Mitigation	
58. EDCB Mitigation	
59. EDCB Mitigation	
60. EDCB Mitigation	
61. EDCB Mitigation	
62. EDCB Mitigation	
63. EDCB Mitigation	
64. EDCB Mitigation	
65. EDCB Mitigation	
66. EDCB Mitigation	
67. EDCB Mitigation	
68. EDCB Mitigation	
69. EDCB Mitigation	
70. EDCB Mitigation	
71. EDCB Mitigation	
72. EDCB Mitigation	
73. EDCB Mitigation	
74. EDCB Mitigation	
75. EDCB Mitigation	
76. EDCB Mitigation	
77. EDCB Mitigation	
78. EDCB Mitigation	
79. EDCB Mitigation	
80. EDCB Mitigation	
81. EDCB Mitigation	
82. EDCB Mitigation	
83. EDCB Mitigation	
84. EDCB Mitigation	
85. EDCB Mitigation	
86. EDCB Mitigation	
87. EDCB Mitigation	
88. EDCB Mitigation	
89. EDCB Mitigation	
90. EDCB Mitigation	
91. EDCB Mitigation	
92. EDCB Mitigation	
93. EDCB Mitigation	
94. EDCB Mitigation	
95. EDCB Mitigation	
96. EDCB Mitigation	
97. EDCB Mitigation	
98. EDCB Mitigation	
99. EDCB Mitigation	
100. EDCB Mitigation	

Horizontal West Village I West Neighborhood Spring Grove PD Jaffers PD CDR 18-10-353

Prepared for: ORANGE COUNTY, FL

Project Title: LAND USE PLAN

Sheet No.: C2.00

Date: April 2018

POULOS & BENNETT

Poulos & Bennett, LLC  
200 S. Orange Ave., Suite 1200  
Tampa, FL 33602  
Tel: 813.251.1200  
Fax: 813.251.1201



## Updated Condition #6

6. The project shall comply with the terms and conditions of that certain Adequate Public Facilities Right-of-Way Agreement for Village I, Spring Grove, recorded at Official Records Document #~~20190734332~~ #20160429794, Public Records of Orange County, Florida, as may be amended.



# Updated Condition #7

7. Pursuant to the BCC's acceptance of the Village I Term Sheet on November 13, 2018, this project shall comply with the terms and conditions of the Village I Road Network Agreement recorded at Doc# 20200109451, Public Records of Orange County, Florida, as may be amended from time to time.



# Updated Condition #10.I

10.I. Unless the property is otherwise vested or exempt, the applicant must apply for and obtain a capacity encumbrance letter in accordance with Section 12.1 of the Village I Road Network Agreement recorded at Doc# 20200109451, Public Records of Orange County, Florida, as may be amended from time to time, and must apply for and obtain a capacity reservation certificate prior to approval of the plat. Nothing in this condition, and nothing in the decision to approve this land use plan, shall be construed as a guarantee that the applicant will be able to satisfy the requirements for obtaining a capacity encumbrance letter or a capacity reservation certificate.



# Action Requested

**Make a finding of consistency with the Comprehensive Plan (CP) and approve the substantial change to the Spring Grove - Jaffers Planned Development / Land Use Plan (PD/LUP) dated “April 5, 2019”, subject to the conditions listed under the DRC Recommendation in the Staff Report, as amended, and**

**Approve the Second Amendment to Adequate Public Facilities Agreement for Horizon West – Village I – West Neighborhood Spring Grove – Jaffers by and between Spring Grove LLC, M/I Homes of Orlando LLC and Orange County.**

**District 1**



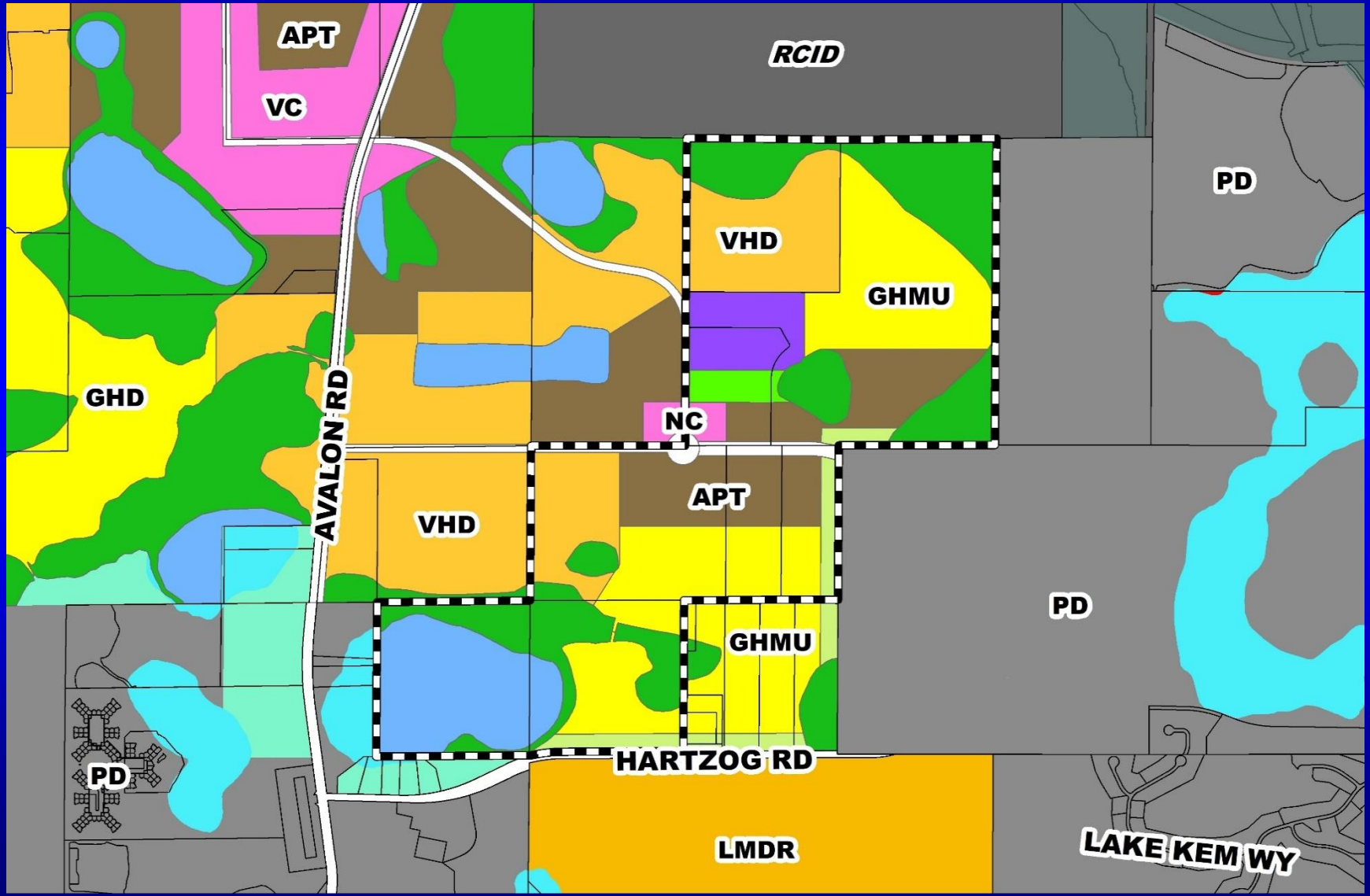


# Horizon West – Village I – Withers Planned Development / Land Use Plan

<b>Case:</b>	CDR-19-10-331
<b>Project Name:</b>	Horizon West – Village I – Withers Planned Development / Land Use Plan
<b>Applicant:</b>	Kathy Hattaway, Poulos and Bennett, LLC
<b>District:</b>	1
<b>Acreage:</b>	320.75 gross acres
<b>Location:</b>	Generally east of Avalon Road, north of Hartzog Road, and south of Western Way
<b>Request:</b>	To revise the unit count and density for PD Parcels 4, 5, and 6; to update the APF table to reflect transfers to the Parcel 1 PD (LUP-19-02-052), Serenade PD (LUP-18-10-354), and Cross PD (LUP-18-12-410); to update the Transfer of Development Rights table to reflect a transfer to the Parcel 1 PD; to update waivers 1-6 to reference PD Parcel 13; and to request a new waiver to allow shared access between single-family and multi-family residential; and a new waiver related to the CEL process.

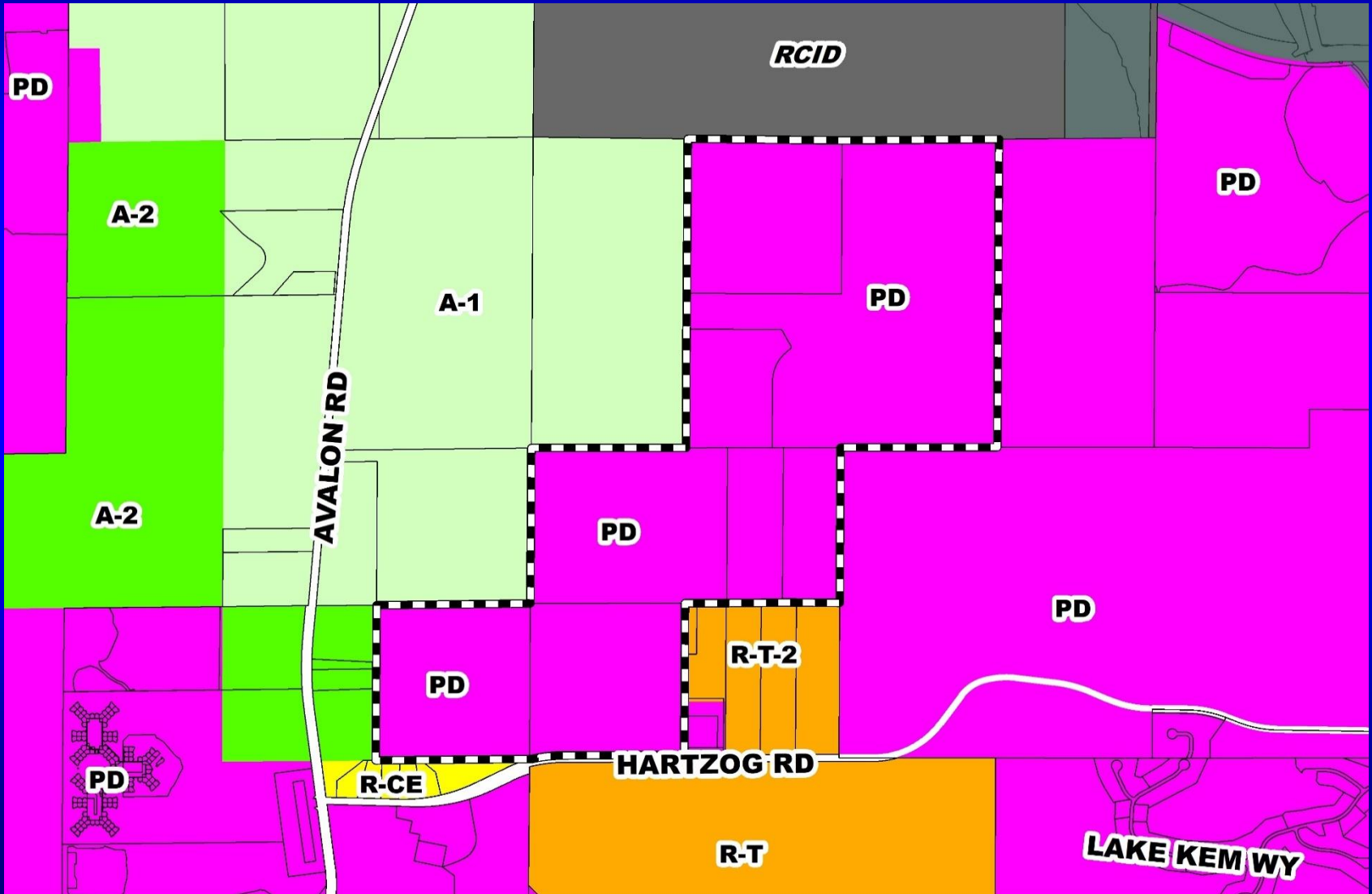


# Horizon West – Village I – Withers Planned Development / Land Use Plan Future Land Use Map





# Horizon West – Village I – Withers Planned Development / Land Use Plan Zoning Map



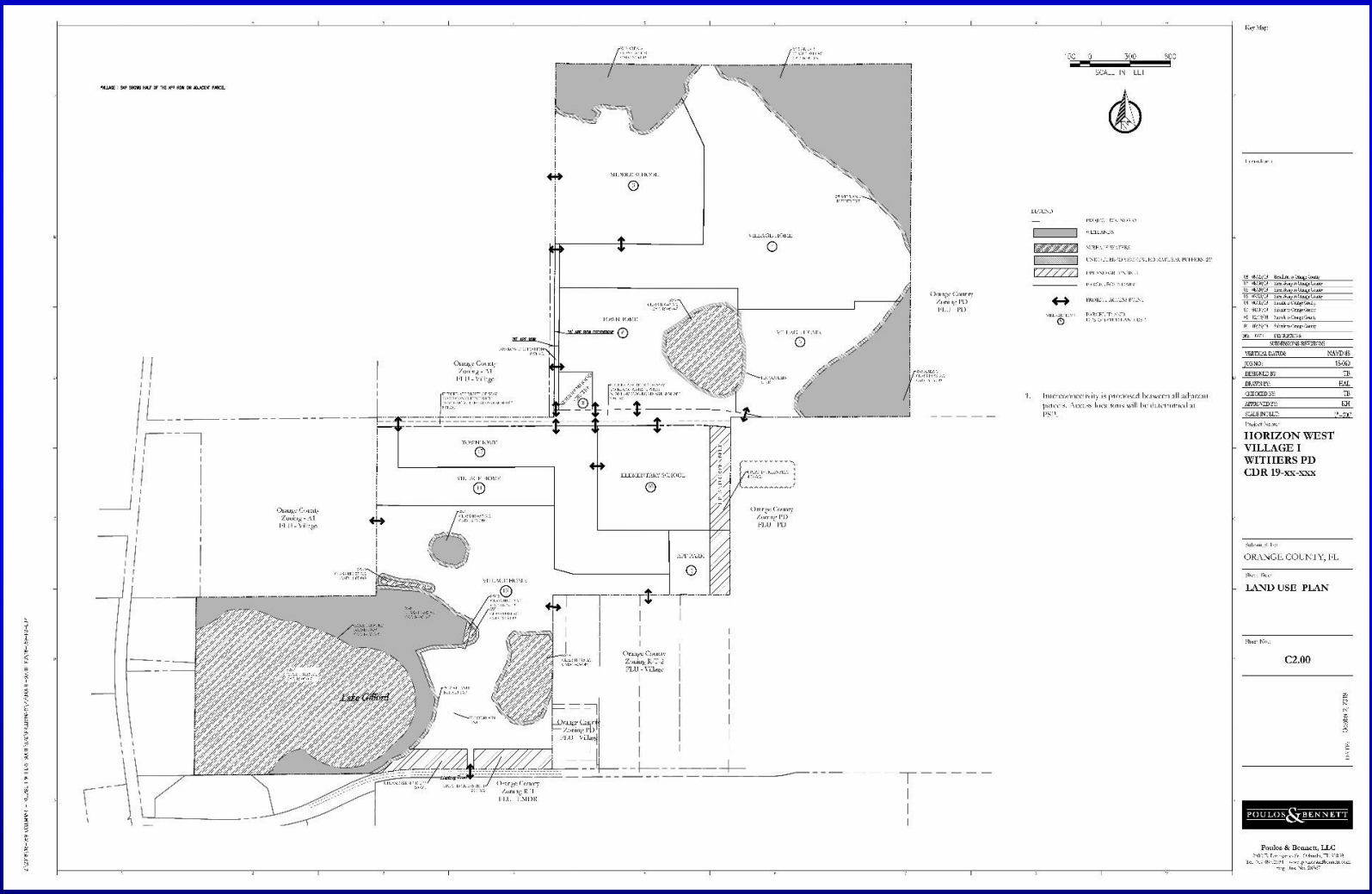


# Horizon West – Village I – Withers Planned Development / Land Use Plan Aerial Map





# Horizon West – Village I – Withers Planned Development / Land Use Plan Overall Land Use Plan





# Updated Condition #7

7. Pursuant to the BCC's acceptance of the Village I Term Sheet on November 13, 2018, this project shall comply with the terms and conditions of the Village I Road Network Agreement recorded at Doc# 20200109451, Public Records of Orange County, Florida, as may be amended from time to time.



## Updated Condition #9.c

9.c. Unless the property is otherwise vested or exempt, the applicant must apply for and obtain a capacity encumbrance letter in accordance with Section 12.1 of the Village I Road Network Agreement recorded at Doc# 20200109451, Public Records of Orange County, Florida, as may be amended from time to time, and must apply for and obtain a capacity reservation certificate prior to approval of the plat. Nothing in this condition, and nothing in the decision to approve this land use plan, shall be construed as a guarantee that the applicant will be able to satisfy the requirements for obtaining a capacity encumbrance letter or a capacity reservation certificate.



# Action Requested

**Make a finding of consistency with the Comprehensive Plan (CP) and approve the substantial change to the Horizon West – Village I - Withers Planned Development / Land Use Plan (PD/LUP) dated “Received November 25, 2019”, subject to the conditions listed under the DRC Recommendation in the Staff Report, as amended, and**

**Approval of First Amendment to Adequate Public Facilities Agreement for Horizon West Village I Withers PD by and between Withers LLC, Columnar Partnership Holding I LLC, and Orange County.**

**District 1**



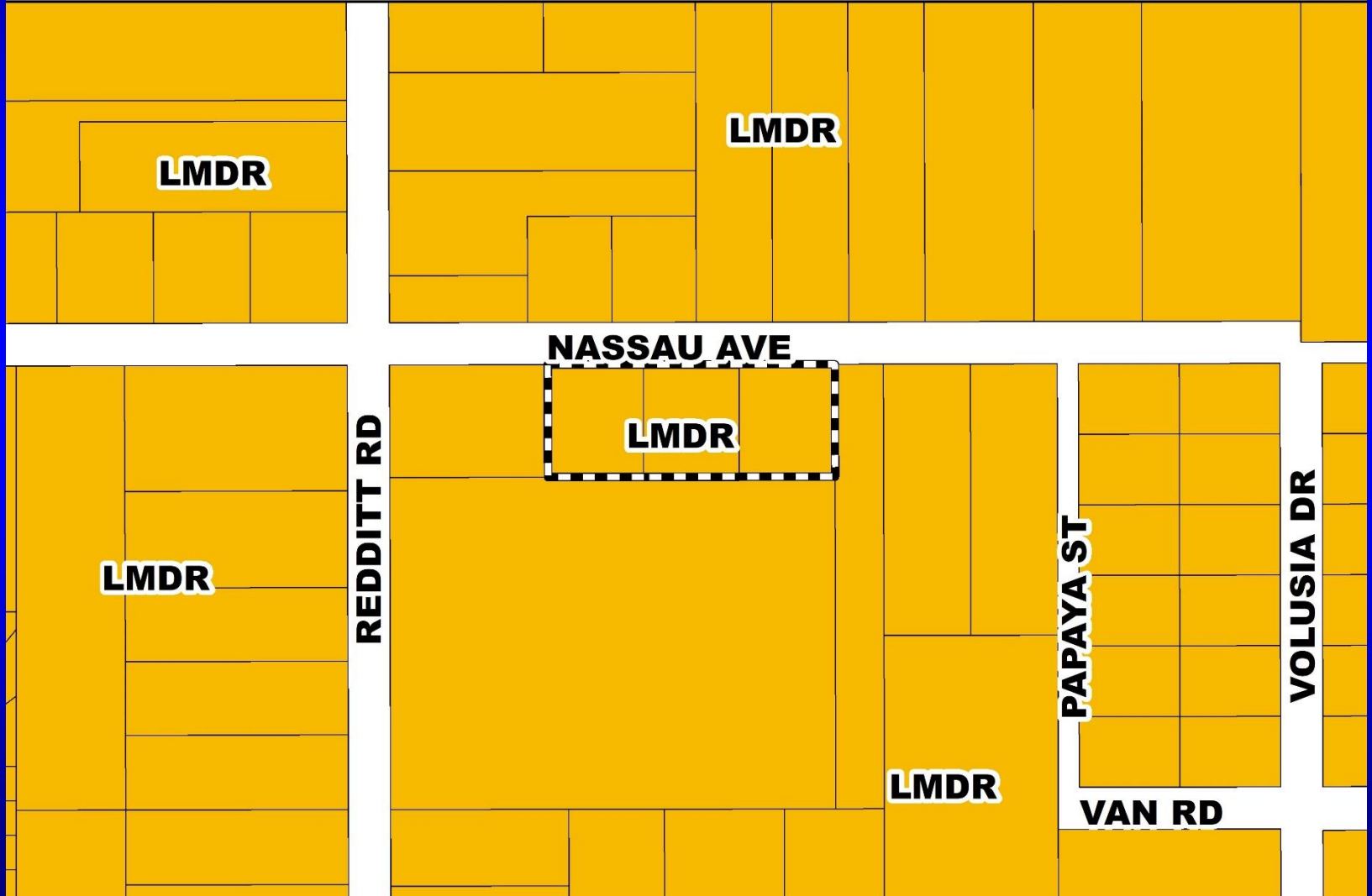


## **RZ-20-01-073 – Honorio Saucedo Planning and Zoning Commission (PZC) Appeal**

<b>Case:</b>	RZ-20-01-073
<b>Appellant:</b>	Alison M. Yurko, Esq.
<b>Applicant:</b>	Honorio Saucedo
<b>District:</b>	3
<b>Location:</b>	Generally located on the south side of Nassau Avenue, approximately 250 feet east of Redditt Road.
<b>Acreage:</b>	1.50 gross acres
<b>From:</b>	A-2 (Farmland Rural District)
<b>To:</b>	R-2 (Residential District)
<b>Proposed Use:</b>	Three (3) triplex structures (attached residential dwelling units)

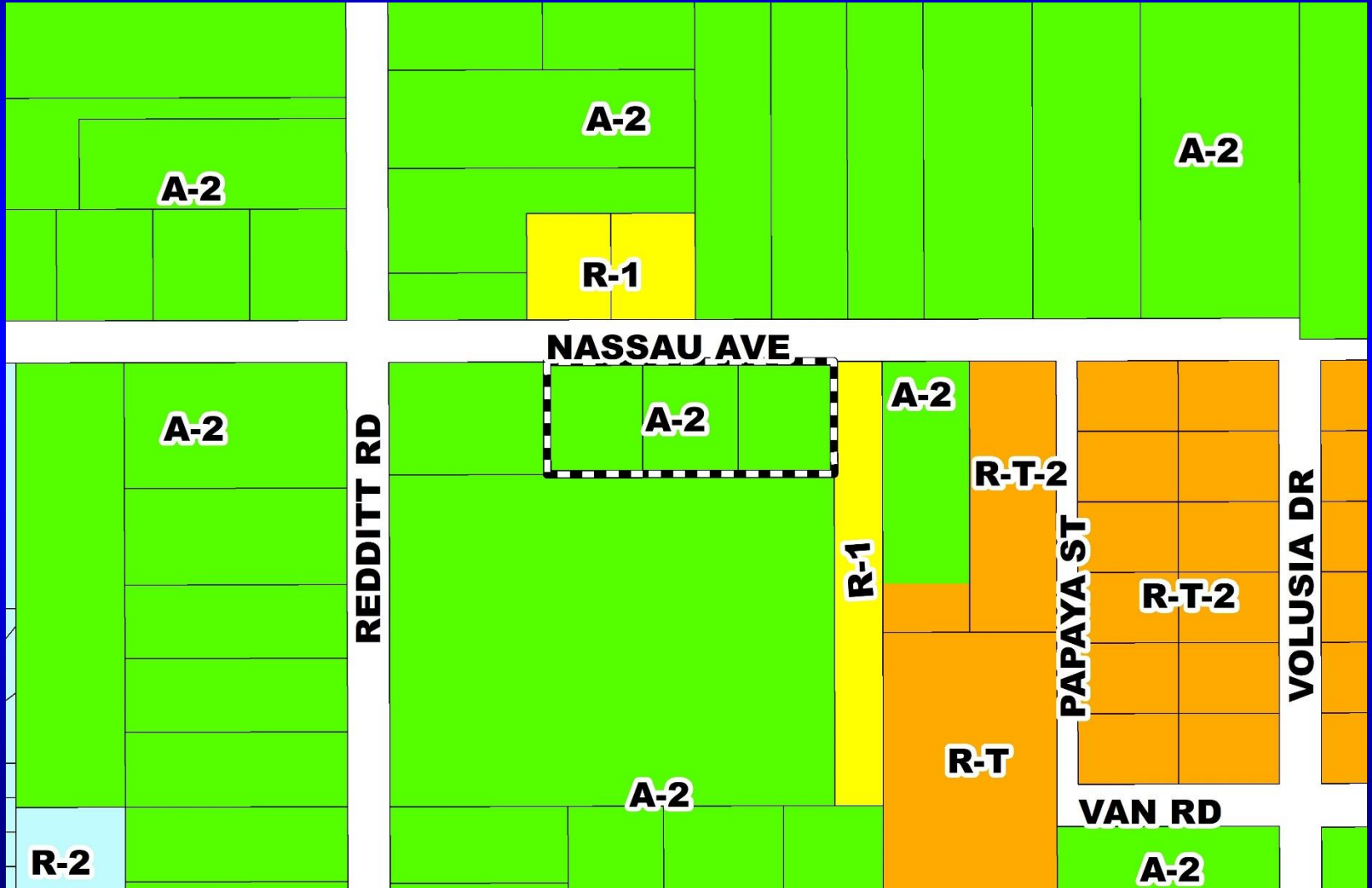


# RZ-20-01-073 – Honorio Saucedo Planning and Zoning Commission (PZC) Appeal Future Land Use Map





# RZ-20-01-073 – Honorio Saucedo Planning and Zoning Commission (PZC) Appeal Zoning Map

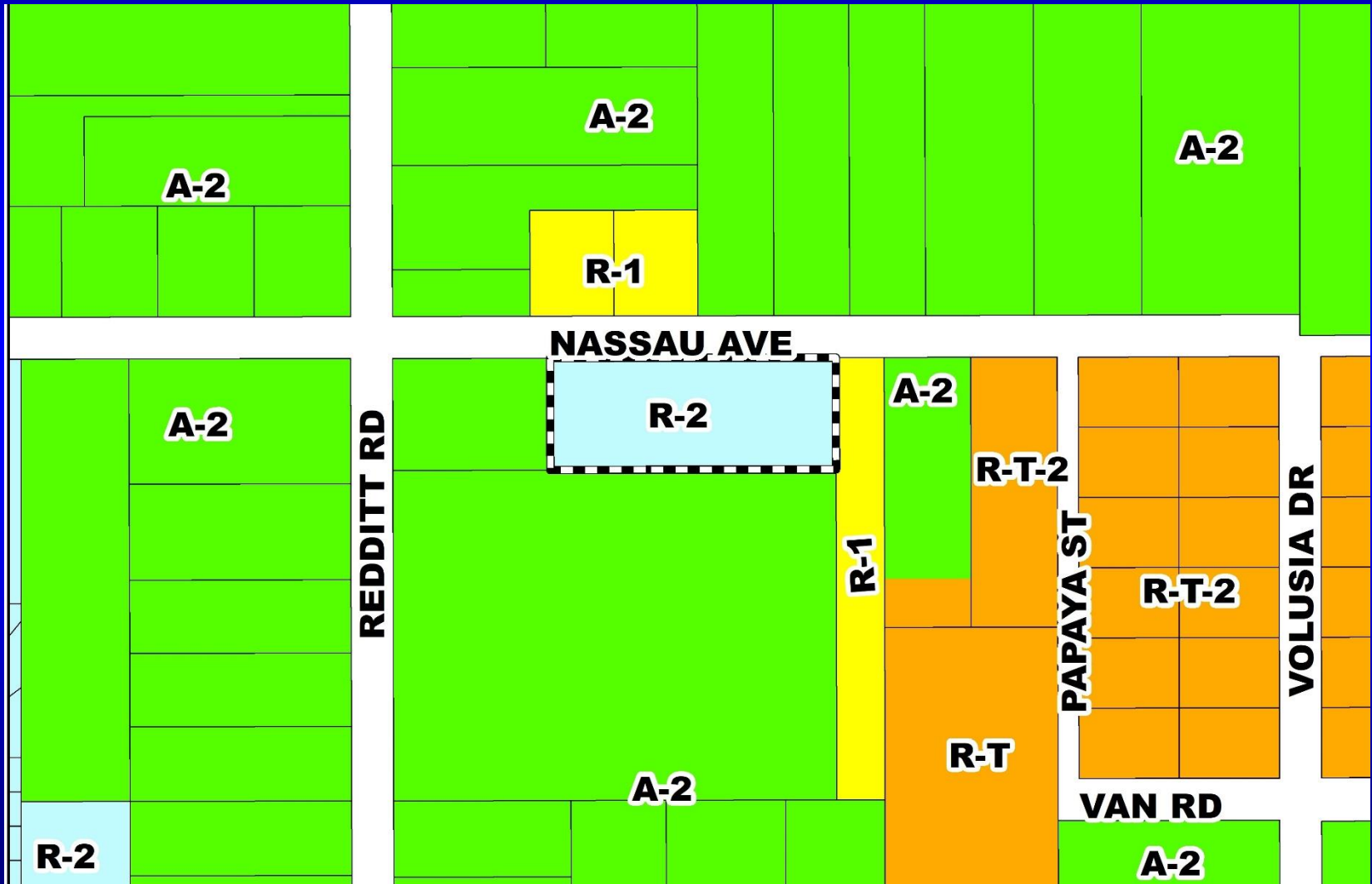




# RZ-20-01-073 – Honorio Saucedo

## Planning and Zoning Commission (PZC) Appeal

### Proposed Zoning Map





**RZ-20-01-073 – Honorio Saucedo  
Planning and Zoning Commission (PZC) Appeal  
Aerial Map**





# Action Requested

## PZC Recommendation

Make a finding of consistency with the Comprehensive Plan and recommend APPROVAL of the requested R-2 (Residential District) zoning, subject to the following restriction:

- 1) The subject property shall be limited to no more than 10 dwelling units.

**District 3**



# Action Requested

## Alternative Staff Recommendation

Make a finding of consistency with the Comprehensive Plan and recommend APPROVAL of R-1A (Single-Family Dwelling District) zoning, subject to the following restriction:

- 1) The subject property shall be limited to no more than three (3) detached single-family dwelling units.

**District 3**



**RZ-19-12-058 – Ismael Portalatin  
Planning and Zoning Commission (PZC) Board-Called Hearing**

**This case was withdrawn by the applicant on March 4, 2020. No action is required on this item.**





# **RZ-19-10-044 – Stephen Allen Planning and Zoning Commission (PZC) Board-Called Hearing**

- Case:** RZ-19-10-044
- Applicant:** Stephen Allen, Civil Corp Engineering, Inc.
- District:** 3
- Location:** 5177 Hoffner Ave; or generally located on the west side of Petroff Avenue, 230 feet north of Hoffner Avenue
- Acreage:** 3.90 gross acre
- From:** R-2 (Residential District) (Restricted)
- To:** R-2 (Residential District)
- Proposed Use:** Thirty-eight (38) single-family attached residential dwelling units



# Action Requested

**Continue case RZ-19-10-044 to the April 21, 2020 Board of County Commissioners' meeting at 2:00 p.m.**

**District 3**



*Board of County Commissioners*

# Public Hearings

**March 10, 2020**