



Interoffice Memorandum

July 14, 2020

TO: Mayor Jerry L. Demings
and Board of County Commissioners

FROM: Joseph C. Kunkel, P.E., Director, Public Works Department

CONTACT PERSON: Humberto L. Castellero, P.E., PTOE, Manager
Traffic Engineering Division

PHONE NUMBER: (407) 836-7891

SUBJ: **Installation of Raised Crosswalks for School Crossings at Bonnie Brook Boulevard and Harcourt Avenue at Calendula Drive**

Traffic Engineering staff recently conducted evaluations due to complaints of the speed of vehicles approaching the designated school crossings listed below. These locations already meet the County's criteria for a marked crossing with a crossing guard during school hours due to the high volumes of children crossing. The Orange County Sheriff's Office and School Crossing Guard Office have also expressed concern for the safety of pedestrians at these locations;

- Bonnie Brook Boulevard at Sadler Elementary School entrance
 - Average Annual Daily Traffic (AADT) 1,200
- Harcourt Avenue at Calendula Drive for Shingle Creek Elementary School
 - AADT 2,725

The evaluation concluded that the installation of raised crosswalks would provide a visual and physical cue to effectively reduce vehicle speeds and provide better pedestrian conspicuity. These roadways are in close proximity to Sadler Elementary School and Shingle Creek Elementary School and the raised crosswalks would make the pedestrian more prominent in the driver's field of vision. Under the current Traffic Calming policy raised pedestrian crosswalks are not included. They are a vertical deflection similar to that of a speed table. The speed table volume requirements currently adopted by Orange County allows for a minimum AADT volume of 800 vehicles per day (vpd) and a maximum of 3,000 (vpd). Additionally, the approach ramps would reduce vehicle speeds and improve motorist yielding to pedestrians within the elevated crosswalk. The project is being funded through the Traffic Calming Program.

Staff recommends that the Board approve the installation of a raised crosswalk for the school crossing listed above.

Action Requested: Approval to install raised crosswalks on Bonnie Brook Boulevard at Sadler Elementary School entrance and Harcourt Avenue at Calendula Drive for Shingle Creek Elementary School. District 6.

JCK/HLC/CPC/wm

Attachments



Bonnie Brook Blvd Consent Agenda District Map

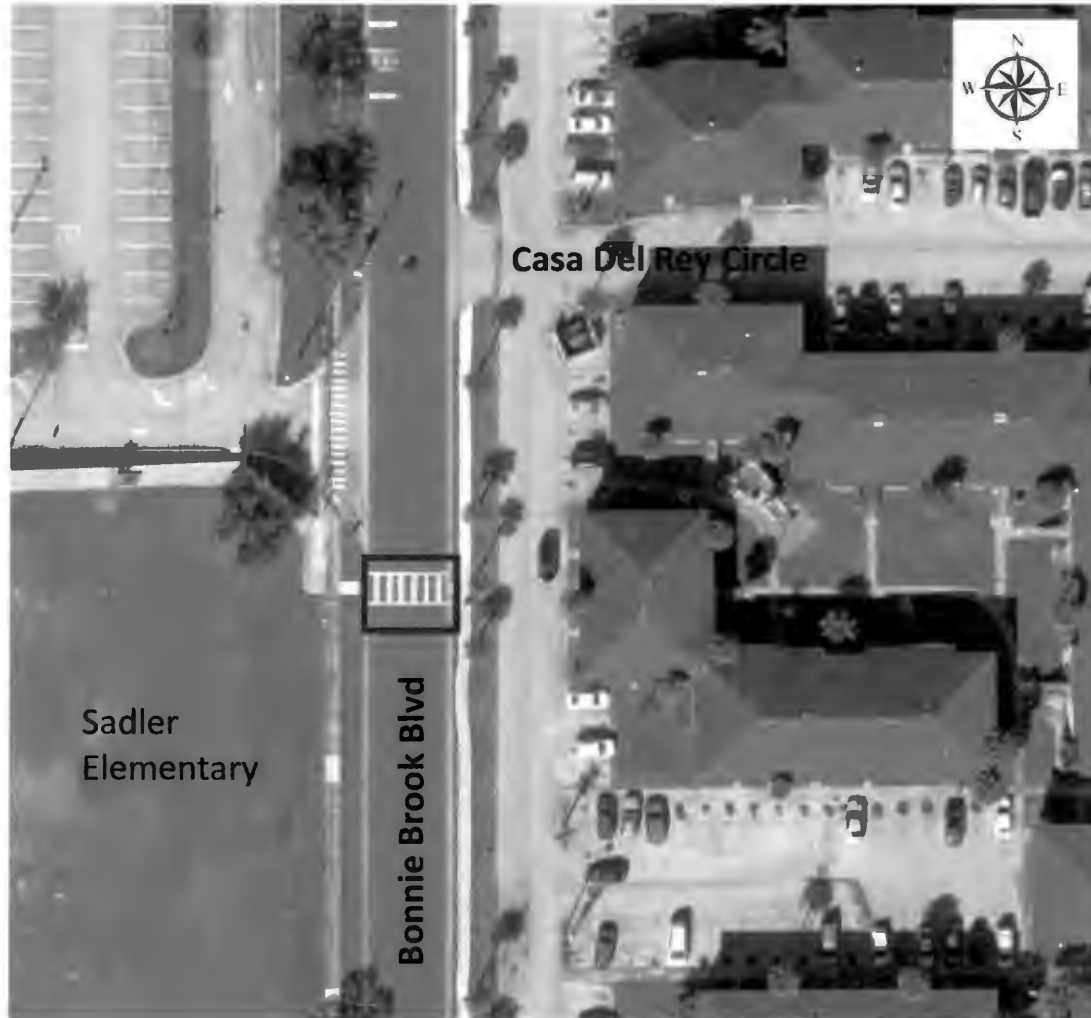


District 6: Commissioner Victoria P. Siplin

Bonnie Brook Blvd and Casa Del Rey Circle



Speed Table Typ. 22' Wide





Harcourt Ave Consent Agenda District Map



District 6: Commissioner Victoria P. Siplin

Shingle Creek elementary – Harcourt Ave @ Calendula Dr

 Speed Table Typ. 22' Wide

