

BISHOP & BUTTREY, INCORPORATED

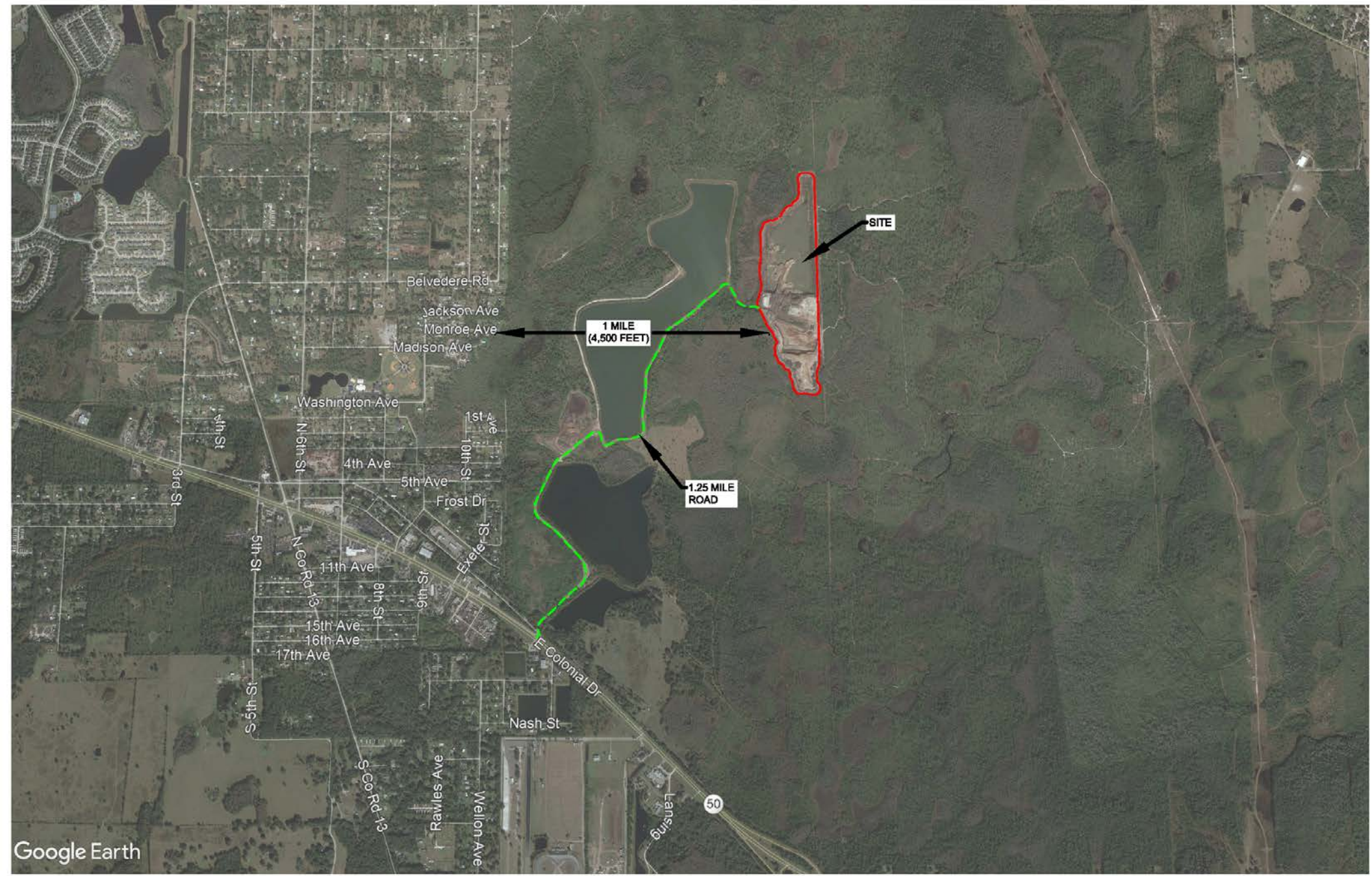
Special Exception (Case #SE-19-05-039)

Solid Waste Permit (SW-19-03-001 – Yard Trash Processing)

Excavation Permit (Modification to Existing Excavation Permit)
(Permit #07-E5-0717)

ORANGE COUNTY BCC

September 24, 2019



BISHOP & BUTTREY - PROJECT LOCATION



- Recommendations before the BCC –To Approve a Recycling Facility, not a “landfill,” not a “dump,” not a “trash” yard.
- “Yard trash” means green waste resulting from landscaping maintenance or land clearing operations and includes materials such as tree and shrub trimmings, grass clippings, palm fronds, trees and tree stumps, and associated rocks and soils.
- These recycling operations include: size reduction, mulching, and screening of the materials brought to the site in order to produce mulch and/or soil. No disposal is allowed.

Bishop & Buttrey Recycling Operations

Process Flow Chart

Customers



Landscaping Companies
Tree Trimming Companies
Developers & General Contractors

Facility



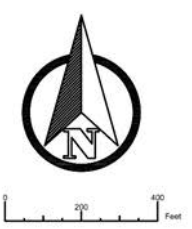
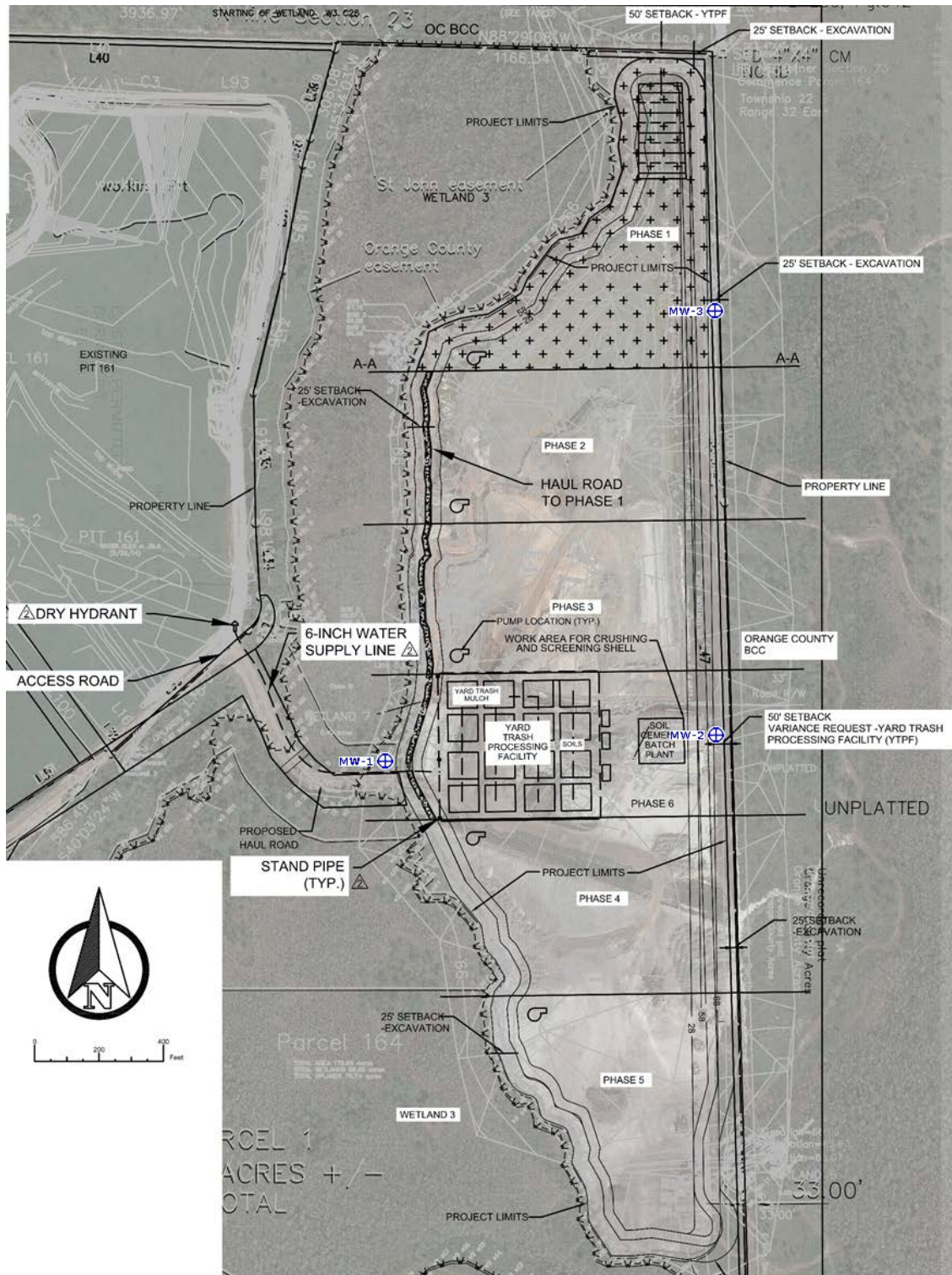
End Uses



General Contractors
(Top Soil)



Landscape Companies
(Mulch)



Site Plan

Bishop & Buttrey – Recycling Operations

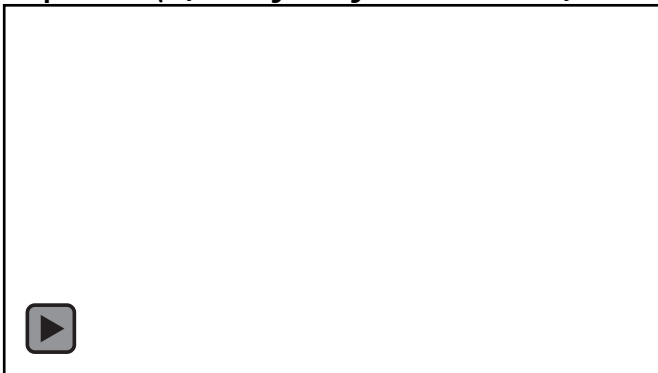
Bishop & Buttrey Recycling Operations

Environmental & Operational Controls

- Trained Operators / Spotters (*only clean wood and/or soils will be accepted*)
- Approved by Florida Department of Environmental Protection (FDEP)
- Traffic Study completed by Luke Transportation Engineers (*found no significant increase or other effects on local traffic flow*)
- Dust Control - Orange County Air Quality permit required for Grinder(*water truck*)

Visual Emissions Tests By County and Grove of the grinder confirm compliance with the requirements of applicable permit standards

- Ambient Air Testing Conducted With OC EPD
- Groundwater and Surface Water Quality – Baseline testing (borrow pit water sample) completed; Monitoring Wells to tested and reported annually -**exceeds regulatory requirements**
- No Odors (*No composting or putrescible / rotten wastes will be accepted*)
- Monthly Orange County Environmental Protection Division Inspections
- No Noise Impacts (*4,500 feet from homes, Noise Study shows no noise @ 1,600 ft west of the grinder location*)

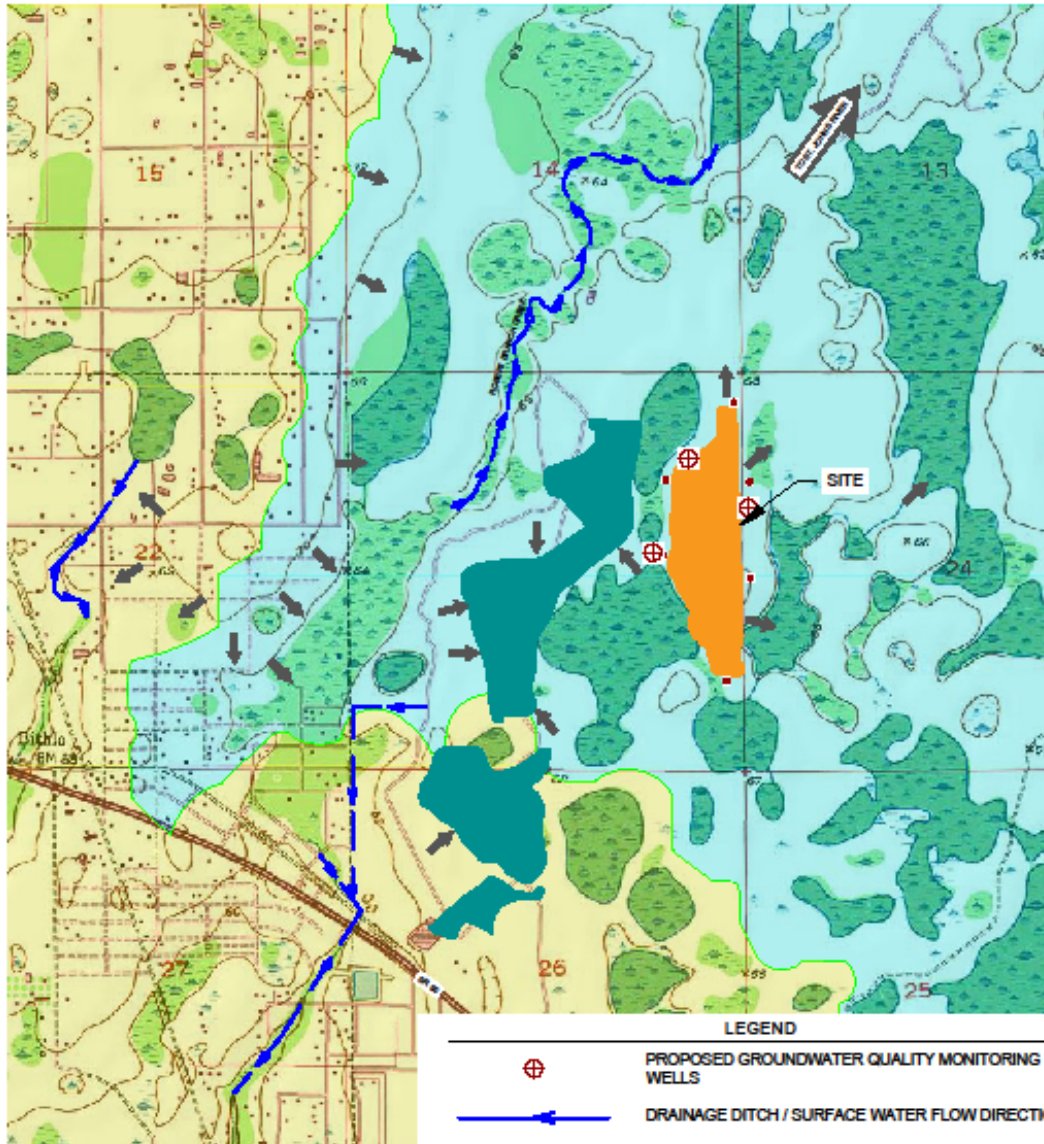


- Fire Prevention (*OCFR Conditions-Add Hydrants / waterline from lake*)

Community Benefits








1. Creation of Jobs
2. Current/proposed operations (i.e. the borrow pit/recycling operations) - preserves 6 acres of uplands and 69 acres of wetlands west of the site
3. Meets Comprehensive Plan Objectives – OBJ.SW1.2: “Reduce landfill disposal” and SW1.2.2: “Promote private sector resource recovery systems” (recycling)
4. Meets Sustainable Orange County Plan 2018-Goals: “promote commercial recycling, minimize waste, reduce Greenhouse gases.”
 1. Recycling operations reduces the amount of inert materials being landfilled, thereby extending the cell life of permitted landfills
 2. Recycling operations decreases open burring of inert materials, minimizing adverse air quality impacts and green house gases resulting from open burn activities.
5. The proposed site is remote, located, $\pm 4,500$ feet east of Bithlo
6. Bishop & Buttrey, Inc. looks forward to working with the Community to support local projects and events, including providing free Top Soil & Mulch for community projects / non-profits.





SOURCE: USGS TOPO QUAD

LEGEND

-  PROPOSED GROUNDWATER QUALITY MONITORING WELLS
-  DRAINAGE DITCH / SURFACE WATER FLOW DIRECTION
-  ESTIMATED GROUND WATER FLOW DIRECTION
-  ST. JOHNS RIVER BASIN
-  ECONLOCKHATCHEE RIVER BASIN
-  WATER LEVEL WELLS
-  LAKE

GROVE
 SCIENTIFIC & ENGINEERING
 GE, LICENSE # 7902
 8140 Edgewater Dr., Suite F
 ORLANDO, FL 32810
 P: 407 298-2282

ESTIMATED SURFACE AND GROUND WATER FLOWS
 RECYCLING OPERATION
 BISHOP AND BUTTREY, INC.
 18993 OLD CHENEY ROAD, BITHLO FLORIDA 32820

PROJECT #	291430
FIGURE	1

C:\Users\jgove\OneDrive\Documents\20190717\ESTIMATED SURFACE AND GROUND WATER FLOWS RECYCLING OPERATION\BISHOP AND BUTTREY, INC.\Map.dwg, SHEET 1 OF 1, DATE PLOTTED: 7/15/2019 10:58:10 AM, PLOTTER: HP DesignJet T1100PS, PLOT SCALE: 1"=2000', PLOT AREA: 11.0000 X 11.0000, PLOT ORIGIN: 0.0000, 0.0000, PLOT SIZE: 11.0000 X 11.0000, PLOT UNIT: INCHES, PLOT DEVICE: HP DesignJet T1100PS, PLOT METHOD: PLOT, PLOT STATUS: SUCCESS, PLOT TIME: 7/15/2019 10:58:10 AM, PLOT USER: jgove

