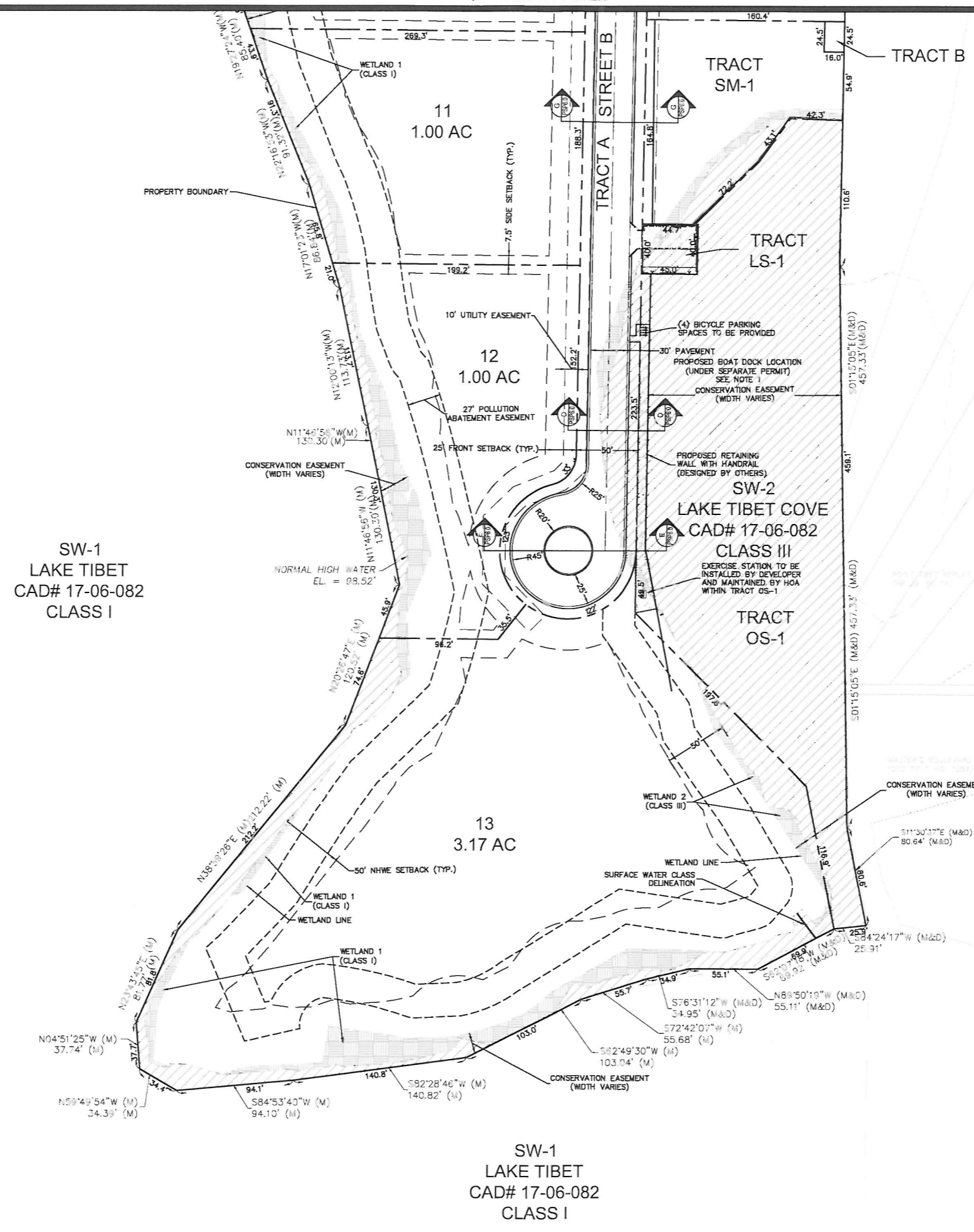


MATCHLINE, SEE SHEET PSP2.1



NOTES:
 1. A DOCK IS NOT PART OF THE INFRASTRUCTURE AND IS NOT APPROVED WITH THIS PLAN. A DOCK, AS DEFINED IN ORANGE COUNTY CODE CHAPTER 15-323 (INCLUDING OBSERVATION PIERS, BOARDWALKS, AND OTHER SIMILAR STRUCTURES) SHALL REQUIRE ADDITIONAL PERMITTING UNDER CHAPTER 15, ARTICLE IX, DOCK CONSTRUCTION ORDINANCE. FOLLOWING ISSUANCE OF THE ENVIRONMENTAL PROTECTION DIVISION CONSTRUCTION PERMIT, A BUILDING PERMIT FROM THE ORANGE COUNTY BUILDING SAFETY DIVISION MUST BE OBTAINED PRIOR TO COMMENCEMENT OF CONSTRUCTION.

LEGEND:

	EXISTING WETLAND
	WETLAND 1 (CLASS I)
	WETLAND 2 (CLASS III)
	SURFACE WATER SW-1 (CLASS I)
	SURFACE WATER SW-2 (CLASS III)

Plot: By Perico, Carlos Sheet: Est-Hubbard_PSP_Layout.2.2 November 13, 2018 02:13:35pm K:\GRI_Civil\495261612-Hubbard_Plan\CADD\PSPP\Plan\17-06-082-1-2-2-SITE.dwg
 This document, together with the concepts and designs presented herein, is intended only for the specific purpose and client for which it was prepared. Please do not rely on this document without written authorization and adaptation by Kimley-Horn and Associates, Inc. shall be without liability to Kimley-Horn and Associates, Inc.