

ORANGE



COUNTY
FLORIDA

Stormwater Utility Update

Public Works Department

May 5, 2026

Board of County Commissioners
Discussion Item

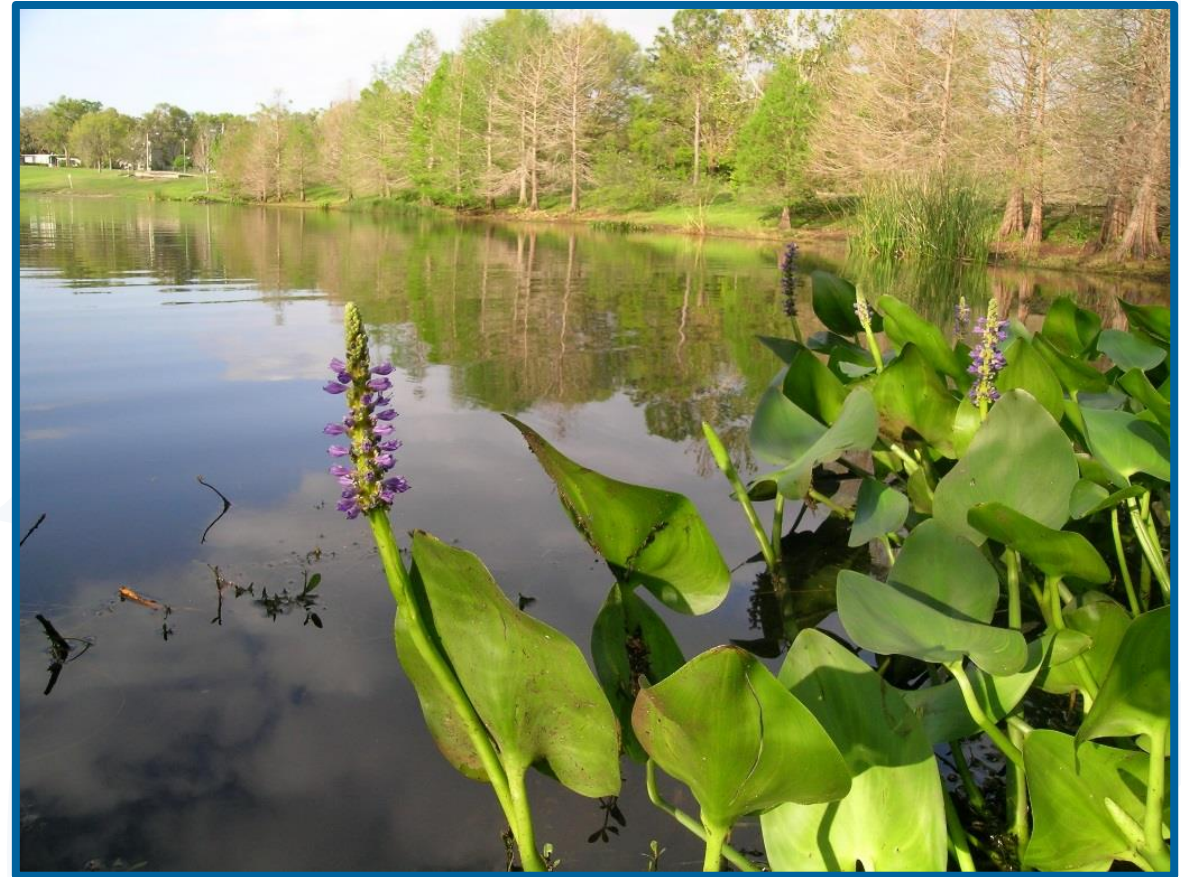
PRESENTATION OUTLINE

- **Purpose**
- Background
- Phase 2 Study Progress
- Project Timeline
- Summary
- Board Direction



PURPOSE

Provide an update on the progress of the Stormwater Utility Phase 2 and receive guidance on next steps, including community engagement.



PRESENTATION OUTLINE

- Purpose
- **Background**
- Phase 2 Study Progress
- Project Timeline
- Summary
- Board Direction



BACKGROUND

Mayor's Transition Team Report (2018)

- Long term action to evaluate the Stormwater Utility Fee

Multi-phase approach as presented to the Board of County Commissioners (BCC) in 2023 & 2024

- Phase 1 (completed)
 - Analyze current stormwater program and future Level of Service (LOS) needs, develop preliminary impervious/rate model, recommend rate structure and LOS goal
- Phase 2 (currently underway)
 - Finalize Impervious Surface, community outreach/public meetings, develop credit policy, residential tiers and hold work sessions to discuss with BCC
- Phase 3 – Implementation (2026)
 - Ordinance revisions, public hearings, finalize billing file, adopt rate structure, develop procedures

BACKGROUND

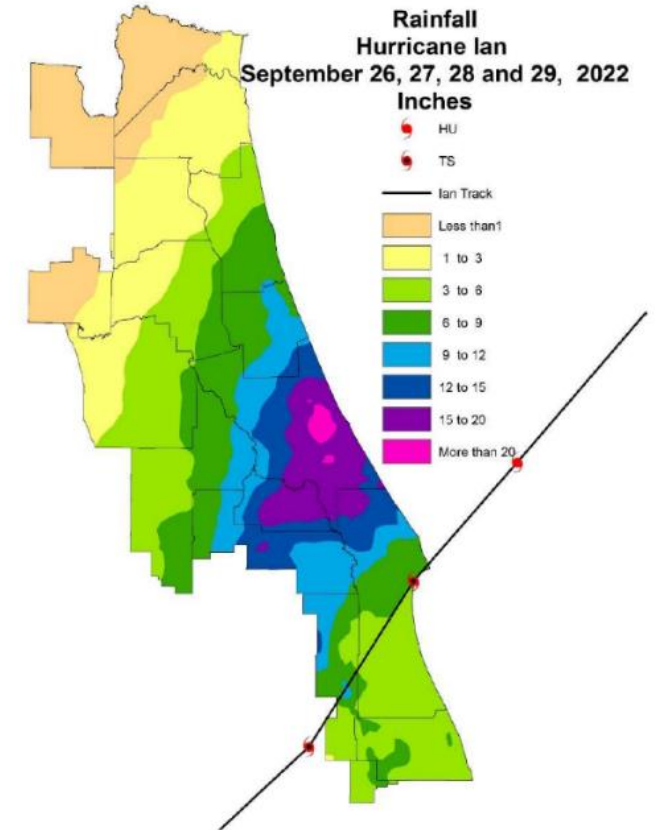
Orange County's Stormwater Program Overview

- Primarily operated by three main divisions (~\$50M)
 - Stormwater
 - Roads and Drainage
 - Environmental Protection (EPD)
- Operation & Maintenance (O&M) responsibilities
 - 95 miles of primary system canals, 90 miles of secondary system canals
 - 382 non-MSBU (Municipal Service Benefit Unit) ponds, 155 drain wells
 - Navigation maintenance
- Capital Projects (CIP)
 - Drainage infrastructure improvement and retrofits
 - Water quality improvement

BACKGROUND

Challenges

- Regulatory changes
 - National Pollutant Discharge Elimination system (NPDES) permit increased inspection/reporting
 - Increased Basin Management Action Plan (BMAP) requirements for impaired waters
- CIP needs increasing
 - Flood mitigation and water management needed in many areas of the county
 - Older neighborhoods without treatment and storage capacity
- Climate and rainfall
 - Changes in storm intensity



BACKGROUND

Stormwater Utility Ordinance 96-20

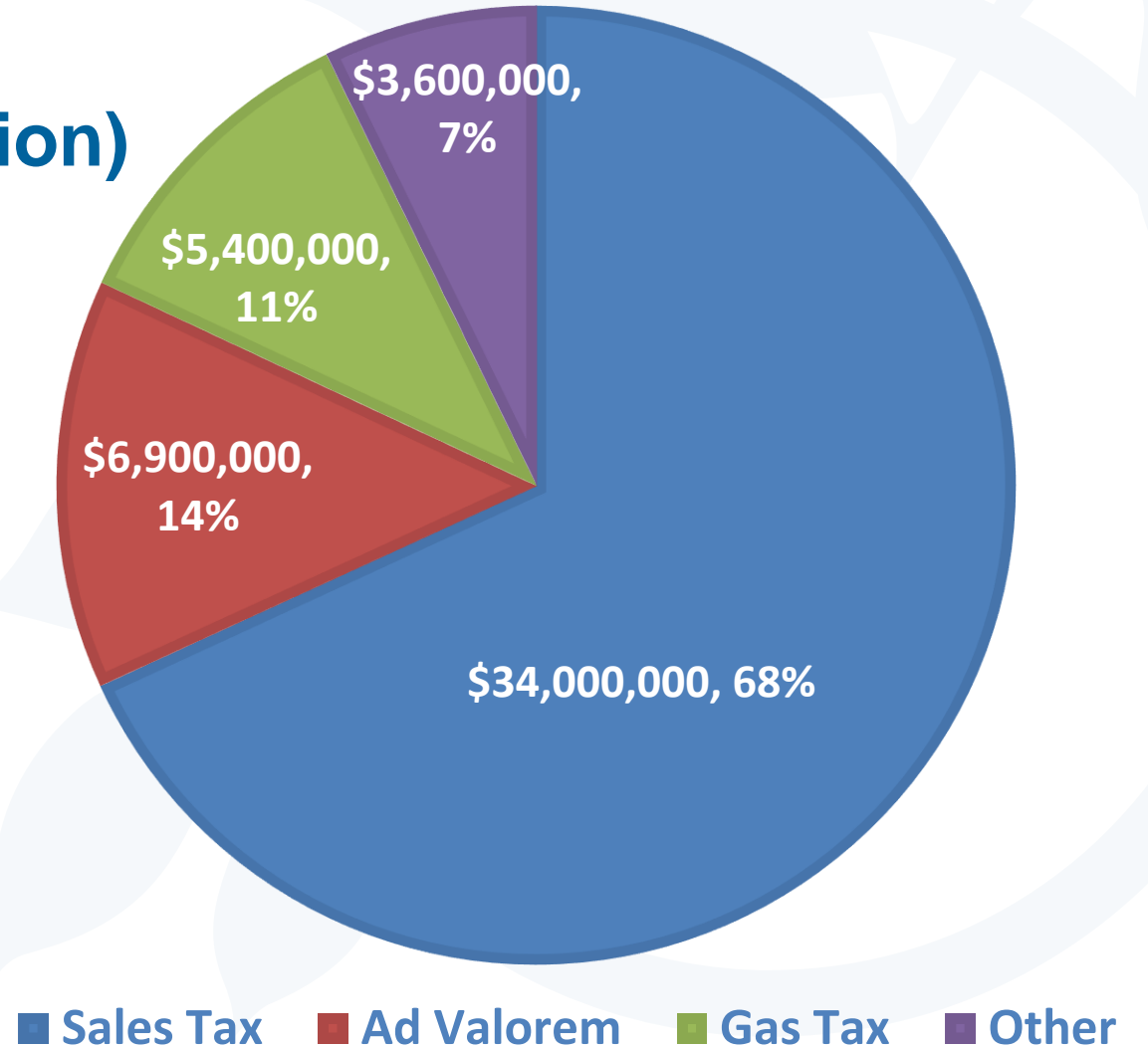
- Chapter 15, Article XII
- Adopted in 1996
- The rate was set at \$0.00 and has never been modified to date
- Intended to fund operation and maintenance of county stormwater system



BACKGROUND

Current funding sources (\$50 million)

- Sales Tax (\$34.0 million)
- Ad Valorem (\$6.9 million)
- Gas Tax (\$5.4 million)
- Other (\$3.6M million)
 - Federal Grants
 - State Grants



BACKGROUND

Comparison of selected local government Stormwater Utility Rates

2024 FSA Survey	Jurisdiction	Population Served	2024 Revenue	2024 Annual Rate	2024 Monthly Rate*
Florida Counties	Alachua County	100,000	\$2,900,000	\$50.04	\$4.17
	Brevard County	226,092	\$6,689,000	\$63.96	\$5.33
	Hillsborough County	905,007	\$35,600,000	\$86.52	\$7.21
	Miami-Dade County	1,102,955	\$31,000,000	\$60.00	\$5.00
	Pinellas County	275,535	\$20,603,000	\$121.32	\$10.11
	Volusia County	122,633	N/A	\$96.00	\$8.00
Municipalities within Orange County	City of Maitland	N/A	N/A	\$128.64	\$10.72
	City of Ocoee	47,295	\$3,918,740	\$99.00	\$8.25
	City of Orlando	280,832	\$24,829,798	\$161.88	\$13.49
	City of Winter Garden	47,245	\$1,589,244	\$99.00	\$8.25
	City of Winter Park	20,522	\$4,500,000	\$282.00	\$23.50
* Average statewide monthly rate for 2024 \$8.86					

BACKGROUND

May 6, 2025, BCC Work Session Phase 1 – BCC directed moving forward with Phase 2 including:

- Prioritized project list
- Credit policy
- Goal to meet LOS B (25-year implementation of projects)
- Tiered rate model (3 tiers based on impervious area)
- Community outreach

PRESENTATION OUTLINE

- Purpose
- Background
- **Phase 2 Study Progress**
- Project Timeline
- Summary
- Board Direction



PHASE 2 STUDY PROGRESS

Prioritized project list

~\$1B+ in project needs identified

- Project lists developed which includes CIP and O&M (expanded from the Infrastructure Surtax Project Lists):
 - Easement, right of way and property acquisition for capital projects
 - Infrastructure retrofits/pump station rehab
 - Flooded infrastructure CIP estimates (Basin Master Plans)
 - Sediment management (end of pipe)
 - Water quality CIP projects, monitoring and equipment
 - Regulatory compliance
- Funding level to determine number of projects prioritized per FY

PHASE 2 STUDY PROGRESS

Level of Service/Rate Methodology

- LOS B identified as goal for Capital
- Phased implementation

Level of Service	Estimated Capital Improvement Project Backlog	CIP Implementation Plan Term	Annual CIP Budget
A	Prioritized Implementation	10 Years	\$138.0 million
B	Phased Implementation	25 Years	\$55.2 million
C	Inspection-Based Implementation	50 Years	\$27.6 million
D	Critical Needs Only Implementation	100 Years	\$13.8 million
	Current Funding	>100 Years	\$10.8 million

PHASE 2 STUDY PROGRESS

Level of Service/Rate Methodology

- Tiering based on residential square footage
- Three tiers identified

Tier	Percentile	Imperviousness (square feet)	Tier Factor
Small	25%	2,647	0.77
Medium	50%	3,432	1.0
Large	75%	4,626	1.35

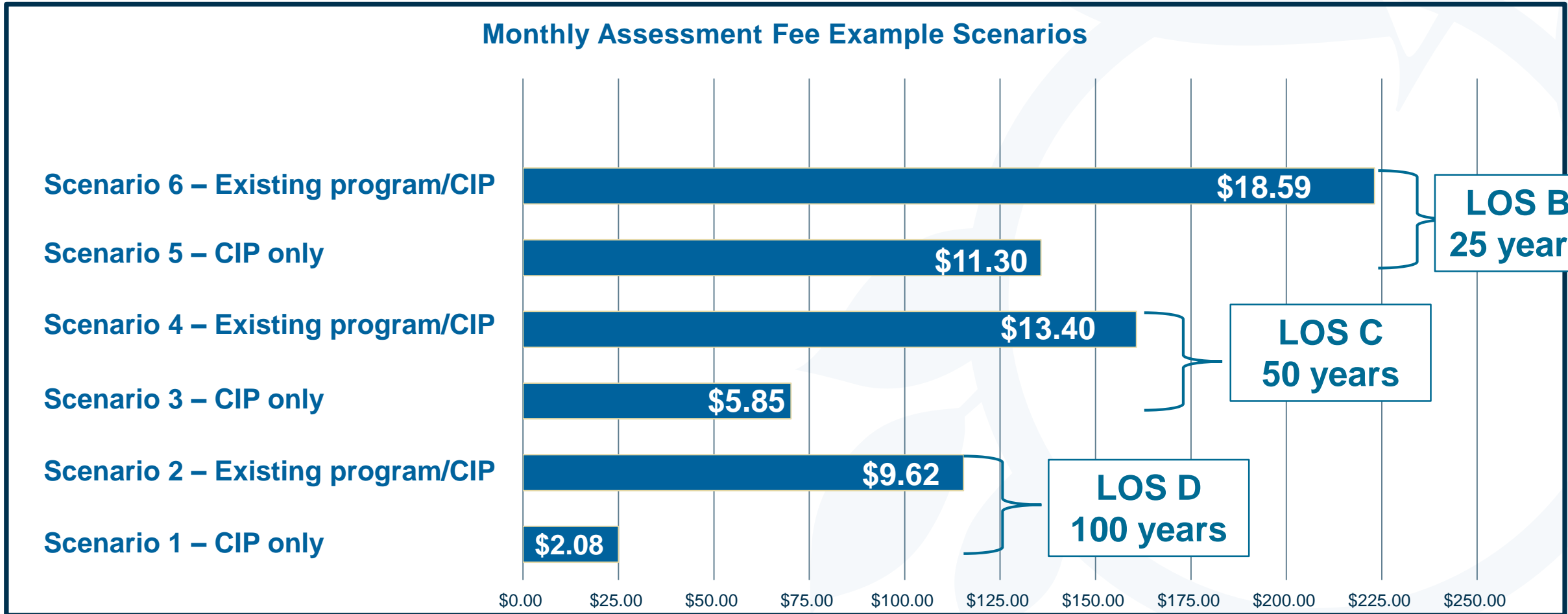
PHASE 2 STUDY PROGRESS

Level of Service/Rate Methodology

- Existing Program (\$50M)
 - Stormwater, Roads and Drainage, and EPD
 - Program Management (\$10M), Regulatory Compliance (\$1.8M), CIP (\$10.8) and O&M (\$27.3M)
- Increase LOS for CIP only
 - LOS D CIP – \$13.8M
 - LOS C CIP – \$27.6M
 - LOS B CIP – \$55.2M

PHASE 2 STUDY PROGRESS

Monthly Assessment Fee Example Scenarios



*Blue bars represent total annual fee with \$ at bottom of graph.

PHASE 2 STUDY PROGRESS

Community Outreach Plan

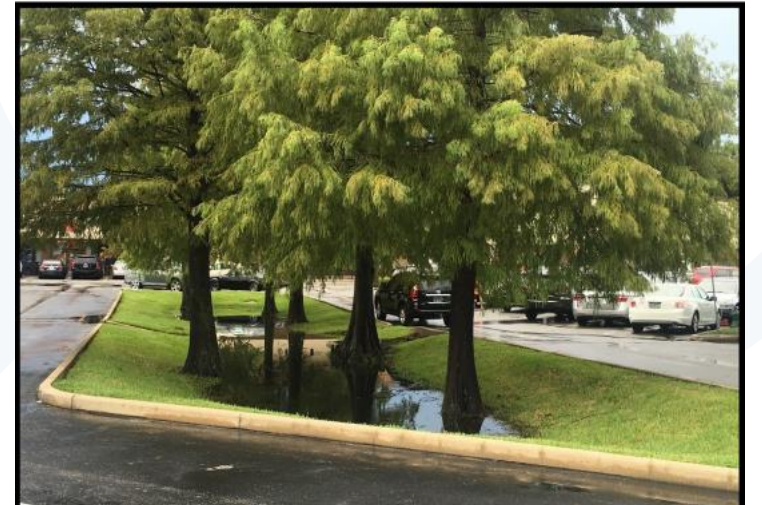
- On hold during Infrastructure Surtax effort
- One meeting in each District during May/June
- Newsletters, social media, survey
- Solicit input from community on:
 - Identify project needs in areas of the community
 - Tiering square footage and number of tiers
 - Credit for lowering impact to stormwater system
 - Level of funding support



PHASE 2 STUDY PROGRESS

Credit Policy

- MSBU/TU
 - Reduction on O&M for ponds/water quality
- Credit for infiltration or reduction of runoff to stormwater system
 - Low Impact practices/Green Stormwater Infrastructure
 - Increased onsite treatment
- Identify any other credit categories



PHASE 2 STUDY PROGRESS

Level of Service/Rate Methodology

- June 30 BCC meeting
- Tiering levels for impervious square footage and assign rate factors
 - Starting rate
 - Escalation factors
 - Services that will be included in fee
 - Capital only
 - Capital and O&M
 - All services – Program management, Regulatory, Capital and O&M

PRESENTATION OUTLINE

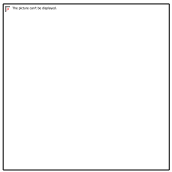
- Purpose
- Background
- Phase 2 Study Progress
- **Project Timeline**
- Summary
- Board Direction



PROJECT TIMELINE



May 5, 2026



BCC Discussion

Update on progress and guidance on moving forward and community outreach



May - June 2026

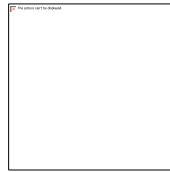


Community Outreach

Solicit feedback on rate, tiering, credit policy and funding



June - 2026



BCC Work Session

Report on Phase 2 and seek direction on rate, tiers, credits and implementation (Phase 3)



Sept. – Oct. 2026



Work Session and Public Hearing

Phase 3 - Adopt ordinance revisions and resolution directing rate collection. Decision on rate, tiers, credits



March 2027



BCC Update

Update on work for new Board members and TRIM notices for August

PRESENTATION OUTLINE

- Purpose
- Background
- Phase 2 Study Progress
- Project Timeline
- **Summary**
- Board Direction



SUMMARY

May 2025 - Board direction to move forward with Phase 2

- LOS B 25-year implementation for capital improvements
- Rate structure to be based on tiered levels of impervious area

Phase 2 nearing completion

- Community outreach pending for May/June 2026
- June 2026 BCC date for work session on Phase 2 final report
 - Direction on tiers, credits and starting rate/escalation

Work session/public hearing on ordinance in October 2026

PRESENTATION OUTLINE

- Purpose
- Background
- Phase 2 Study Progress
- Project Timeline
- Summary
- **Board Direction**



BOARD DIRECTION

Staff is requesting direction from the Board to move forward with completing Stormwater Utility Fee Study:

- **Community outreach in May/June 2026**
- **Complete Phase 2 report**
- **Return to Board on June 30, 2026, to seek direction on Phase 3 and future public hearings**