

SPECIAL HEARTS FARM



“Special Animals for Special Hearts”

WHO WE ARE

The Special Hearts Farm is a Non Profit 501(c) 3 organization and serves individuals with disabilities and unique abilities by providing:

- **ADULT DAY TRAINING**
- **Possible entrepreneur business opportunities related to farming and gardening experiences.**
- **Business opportunities by producing and selling products such as goat milk soap and rustic signs.**

WHAT WE DO

•Our Mission

To provide safe, meaningful, and beneficial farming and gardening experiences for individuals with disabilities and unique abilities who have been denied opportunities for college and supported employment.

•Our Vision

To create business opportunities for individuals with disabilities and unique abilities that provide positive integrative experiences within their community.



WOODWORKING



ANIMAL CARE



**MAKING GOAT
MILK SOAP**



GARDENING



OUR PROGRAMS

ADULT DAY TRAINING SUPPORTED EMPLOYMENT

- Participants are age 22 and above & have “aged out” of school.
- Train participants to perform farm and gardening jobs in a safe environment.
- Provide a meaningful day for those who are denied college & employment opportunities.
- Provide career opportunities for those who are seeking employment.
- Promote community awareness and inclusion opportunities.

ORANGE COUNTY PUBLIC SCHOOLS TRANSITION SITE

- Participants are age 18-22 and are still in Orange County Public School.
- Provide a Transition Site for students to learn farming and gardening skills.
- Train students to perform farm jobs such as animal care, woodworking, gardening, and making goat milk soap.
- Provide career experience opportunities for students to gain employment skills.
- Students have the opportunity to continue in the Adult Day Training Program when they “age out” of school.

WHERE WE ARE

- The Special Hearts Farm is currently located in Winter Garden, Florida, on the campus of the former Maxey Elementary School.
- A collaboration between Orange County Public Schools and the Special Hearts Farm 501(c)3 creates a “true transition opportunity” for students with disabilities to train and continue performing meaningful jobs once they age out of school.
- This transition opportunity is the first of its kind in the state of Florida!

WHY THE NEED TO EXPAND

FOR OUR PARTICIPANTS

- ✓ We are filled to capacity & have a waiting list.
- ✓ We are filling a crucial need for individuals with special needs.
- ✓ We want to build an event/work training barn and provide employment opportunities for our participants and those within the Special Needs Community.
- ✓ We want to eventually provide residential housing and cannot do that on school property.
- ✓ We have purchased our own property & have received State Appropriations funding to begin building.

FOR THEIR FAMILIES

- ✓ Provide their family member with a meaningful day in a safe environment.
- ✓ Provide them the opportunity to continue in the work force and not quit their job(s) to take care of their loved one.
- ✓ Provide their family member with training opportunities and job skills for potential employment.
- ✓ Promote life long learning and happiness for their loved one within the community setting
- ✓ Provide residential opportunities for their loved one when they can no longer care for them.

This is what makes Special Hearts Farm so special!

What an exciting day for Juan Pablo Rodriguez and The Special Hearts Farm! JP was honored for all of his volunteer work serving Meals on Wheels!

Thank you Governor DeSantis for supporting Individuals with Disabilities and The Agency for Persons with Disabilities (APD), it was great meeting you!





Aerial View

08.29.2022

C-2



FURR,
WEGMAN &
BANKS

For further information, please contact the architect at 800.368.3683 or visit our website at www.furrwegmanbanks.com. All rights reserved. © 2022 Furr, Wegman & Banks, Inc. All other rights reserved.

Special Hearts Farm purchased the land from Clem LaMarche in October 2021

***Mr. Lamarche purchased the land in 1999 and owned the land for 22 years.**

- Residents have lived on the property for 20 plus years
- No history of complaints regarding spraying from residents
- Herd of Cattle on property (still there today) with no history of health problems

***Prior to Mr. Lamarche owning the land, it was a chicken farm with 60,000 chickens**

- Residents lived on the property during that time.
- One of the largest chicken farms in the area during that time
- Crop-dusting done during this time



Phase 1 Soil, Water, & Geotechnical Engineering Results – Sept 2021

September 13, 2021
File No. 21-6650

- **Geotechnical Engineering Results** – The fine sand and fine sand with silt (Strata 1 and 2 without roots and on Figure 3) **should be suitable to serve as fill soils in structure and pavement areas** and, with proper moisture control, should density using conventional compaction equipment.
- **Phase I Environmental Site Assessment** - This assessment has revealed **no evidence of recognized environmental conditions** in connection with the subject property. No further assessment appears warranted at this time.
- **Water Sampling Results** - **No** metals, volatile organic aromatics, nitrates, nitrites, herbicides or pesticides analyzed for were detected above standards or target levels.

Special Hearts Farm Property (circled in red)
*Currently surrounded by dirt, sod, and low lying crops.... H&A blueberry fields are located further down Jones Ave (circled in blue)



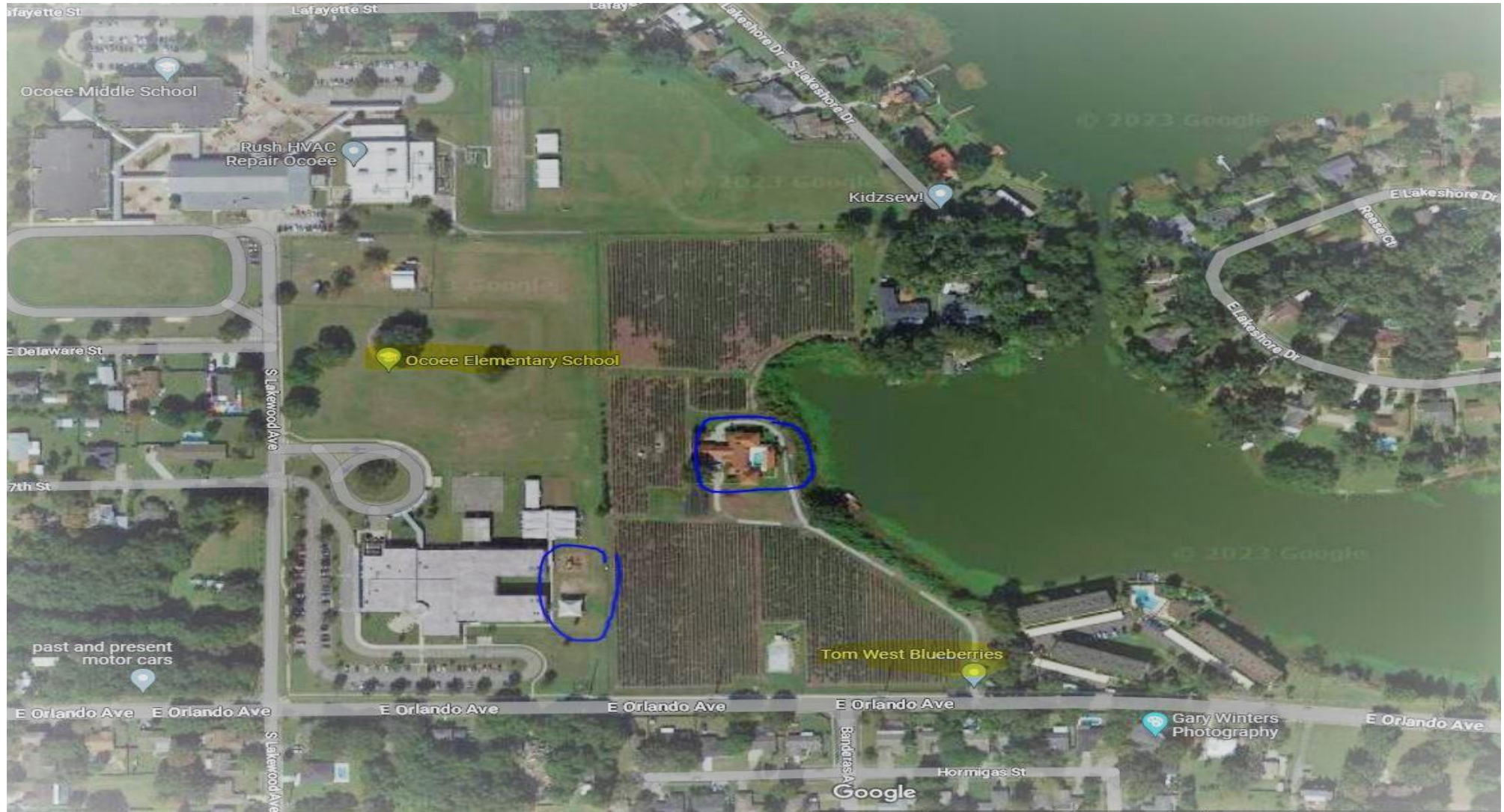
Special Hearts Farm (property today) looking North, South, East and West



West Blueberry Farm, Ocoee

- **Located right next to Ocoee Elementary school**
- **Schools playground and soccer field next to Blueberry field**
- **Right next to Starke Lake**
- **Neighborhood homes located around the Blueberry field**

West Blueberry Farm, Ocoee (red/playground&soccer field)...(blue/blueberry fields)

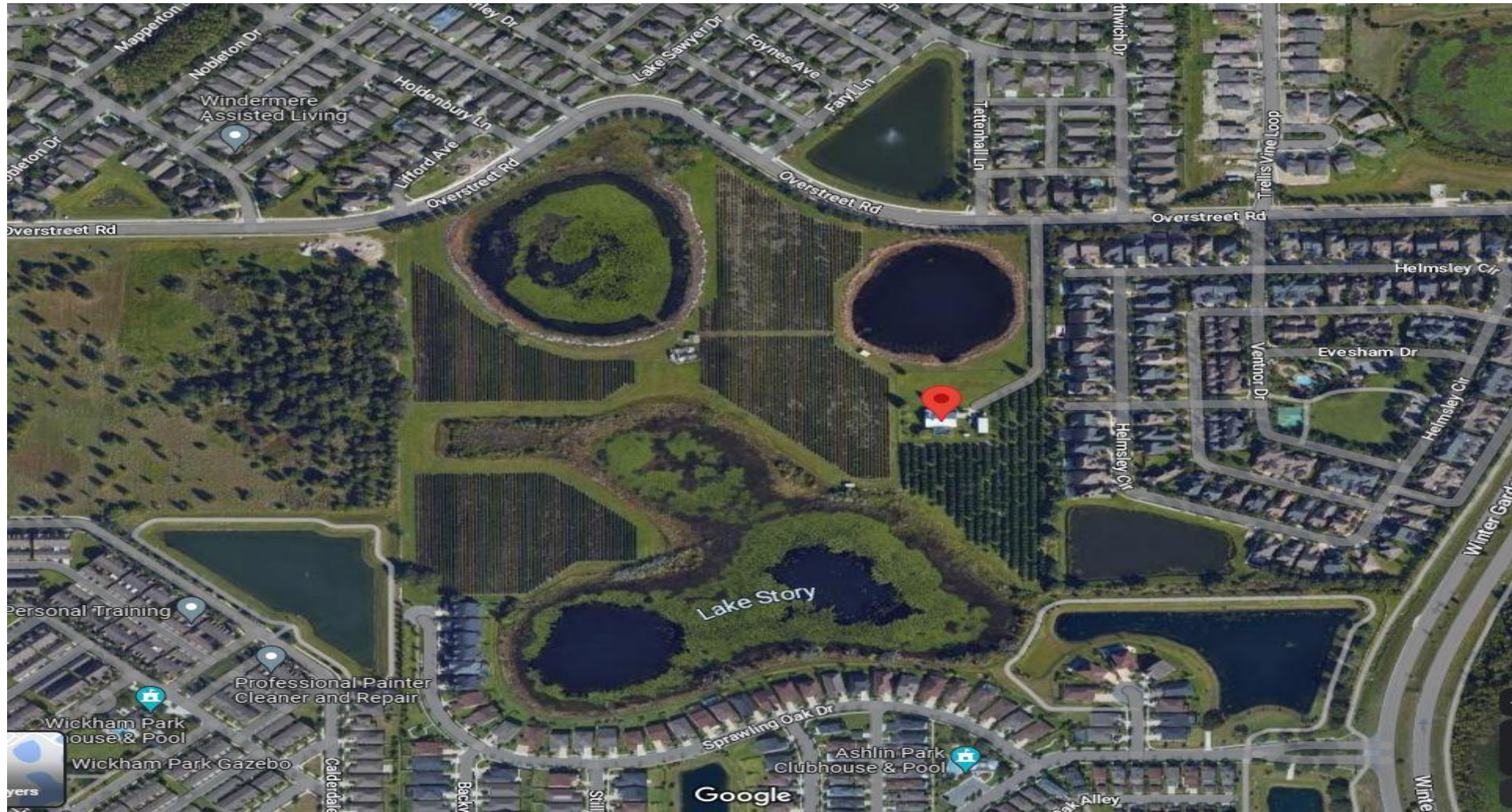


West Blueberry Farm, Ocoee located next to Ocoee Elementary School



BECK BROTHERS FARM, WINDERMERE

Located in Windermere and surrounded by homes and subdivisions

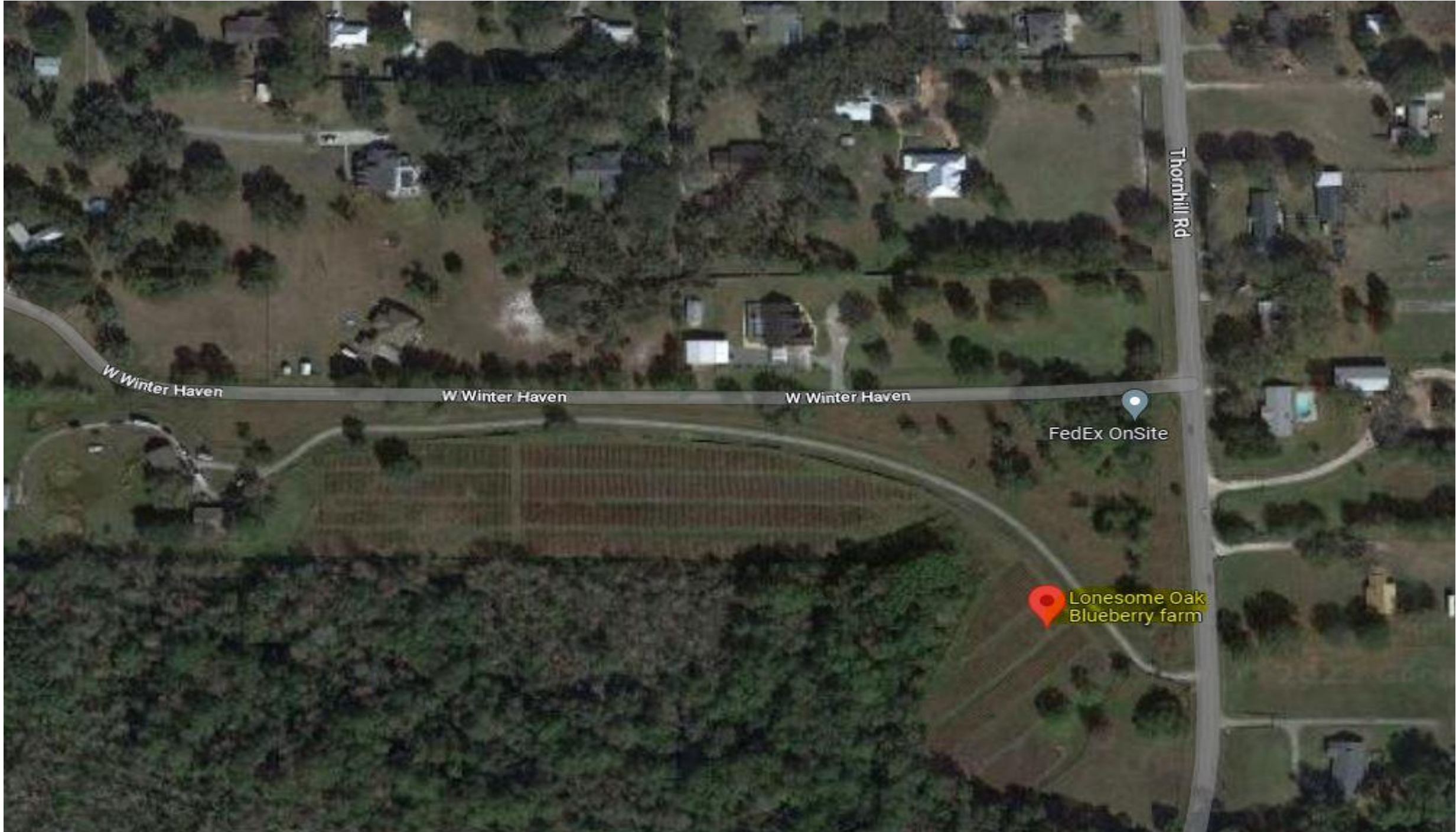


BECK BROTHERS FARM, WINDERMERE



Additional Blueberry Farms with surrounding neighborhoods and residents.....







Jack St

Jack St

561

Pat St

Pat St

Pam St

Division St

Division St

561

561

S Dora Blvd

S Dora Blvd

561

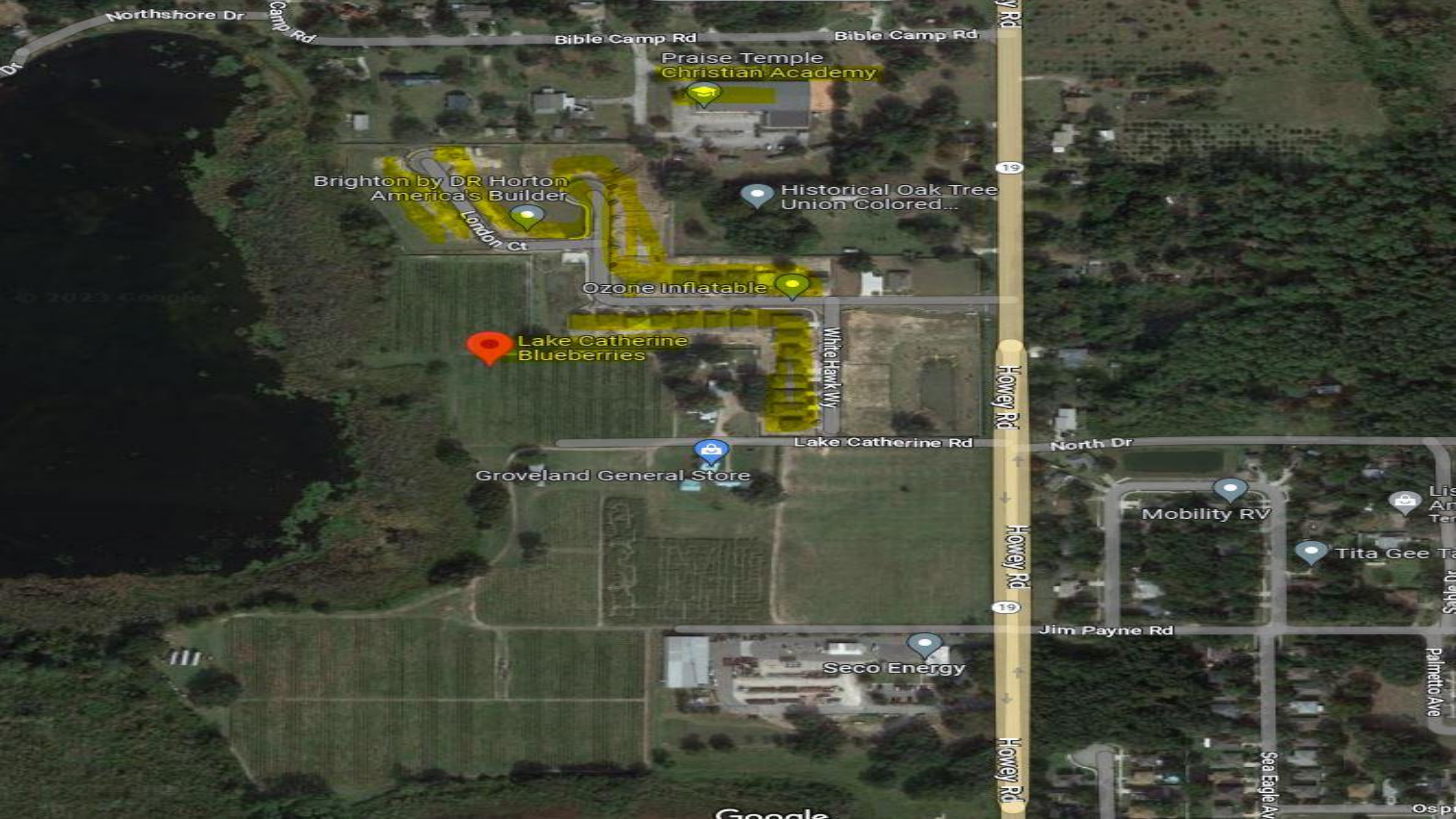
561

561

Fabrications

Far Reach Ranch
UPICK Farm

Stony Brook
Structures of Florida



Northshore Dr

Camp Rd

Bible Camp Rd

Bible Camp Rd

Praise Temple
Christian Academy

Brighton by DR Horton
America's Builder

London Ct

Historical Oak Tree
Union Colored...

Ozone Inflatable

Lake Catherine
Blueberries

White Hawk Wy

Lake Catherine Rd

Groveland General Store

North Dr

Mobility RV

Tita Gee Ta

Jim Payne Rd

Seco Energy

Howey Rd

Howey Rd

Howey Rd

Sea Eagle Ave

Palmetto Ave

Google