

APPROVED
BY ORANGE COUNTY BOARD
OF COUNTY COMMISSIONERS
JAN 13 2026

RESOLUTION
of the
ORANGE COUNTY BOARD OF COUNTY COMMISSIONERS
regarding
**THE ACCEPTANCE OF THE EAST ORLANDO GATEWAY
ANNEX SUBDIVISION PLAT INCLUDING RIGHTS-OF-WAY
AND DRAINAGE EASEMENTS**

Resolution No. 2026- M-02

WHEREAS, Orange County has obtained and accepted the East Orlando Gateway Annex Subdivision Plat, including the rights-of-way and drainage easements, as more particularly described in “*Exhibit A*” to this Resolution, by virtue of that certain sales map of the East Orlando Gateway Annex Subdivision, an unrecorded miscellaneous plat on file with the Orange County Property Appraiser’s Office; and

WHEREAS, since the dedication of the East Orlando Gateway Annex Subdivision Plat in 1962, Orange County has continually maintained the rights-of-way and drainage easements within the subdivision; and

WHEREAS, by this Resolution, Orange County formally and for the record confirms that it has accepted for dedication and declares said lands to be a part of Orange County’s road systems.

NOW, THEREFORE, BE IT RESOLVED BY THE ORANGE COUNTY BOARD OF COUNTY COMMISSIONERS:

Section 1. Acceptance of Plat. Pursuant to Section 177.071, Florida Statutes, the Orange County Board of County Commissioners hereby accepts the dedication of the East Orlando

particularly described in “*Exhibit A*” to this Resolution. Upon acceptance, Orange County shall be responsible for the continued maintenance of the rights-of-way and drainage easements within the East Orlando Gateway Annex Subdivision.

Section 2. Effective Date. This Resolution shall take effect immediately upon execution.

ADOPTED THIS ____ DAY OF JAN 13 2026, 2026.

ORANGE COUNTY, FLORIDA
By: Board of County Commissioners

By: 
for Jerry L. Demings,
Orange County Mayor

ATTEST: Phil Diamond, CPA, County Comptroller
As Clerk of the Board of County Commissioners

By: 
Deputy Clerk



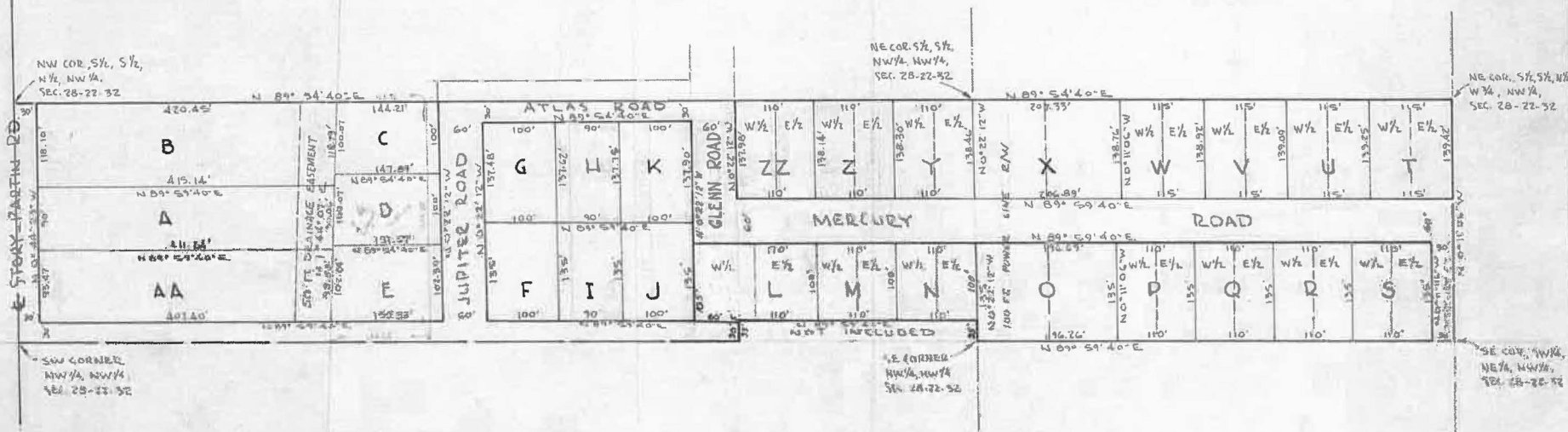
EXHIBIT A

EAST ORLANDO GATEWAY ANNEX

BITHLO, ORANGE COUNTY, FLORIDA

THE SOUTH 1/4 OF THE N 1/2 OF THE WEST 3/4 OF THE NW 1/4 OF
SEC. 28, TWP. 22 SOUTH, RANGE 32 EAST.

SCALE 1" = 100'
DATE JUNE 5, 1962
JOB NO. 62-682



W. C. HART
COUNTY SURVEYOR
ORANGE COUNTY, FLORIDA
627 N. HIGHLAND AVE. SUITE 203
ORLANDO, FLORIDA