



OFFICE OF COMPTROLLER


INTEROFFICE MEMO

ORANGE
COUNTY
FLORIDA

Phil Diamond, CPA
County Comptroller
Finance and Accounting Department
Special Assessments
P O Box 38
Orlando, FL 32802
Telephone: 407-836-5770
Fax: 407-836-5753

Date: March 23, 2022

To: Mayor Jerry L. Demings
and
County Commissioners

From: Eric Gassman, Chief Deputy Comptroller 

Contact: Ann Dawkins, 407-836-5770

Subject: Public Hearings to Amend the Existing Municipal Service Benefit Unit (MSBU) for
Maintenance of Retention Ponds and for Streetlighting

MSBU District: **Woodland Park Area**

Applicant: Frederick Miller and Richard Rosello
Taylor Morrison of Florida, Inc.
Developers

District: Commissioner Gomez Cordero, District 4

Report: The attached resolution will amend the existing MSBU's for maintenance
of retention ponds and streetlighting. The amendment will add Woodland
Park Phase 7 Replat and Woodland Park Phase 8 to the Woodland Park
Area for streetlighting and for maintenance of retention ponds.

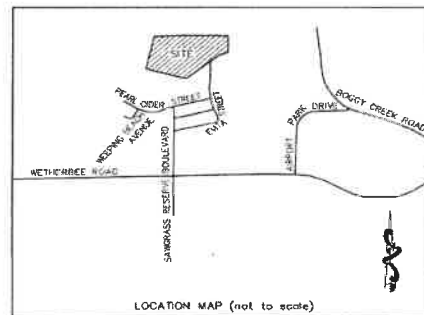
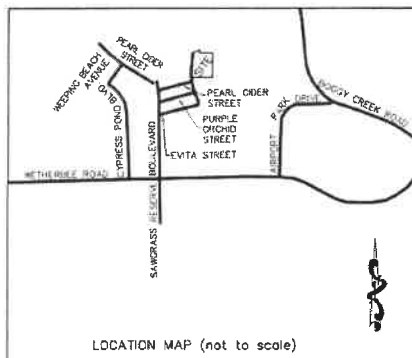
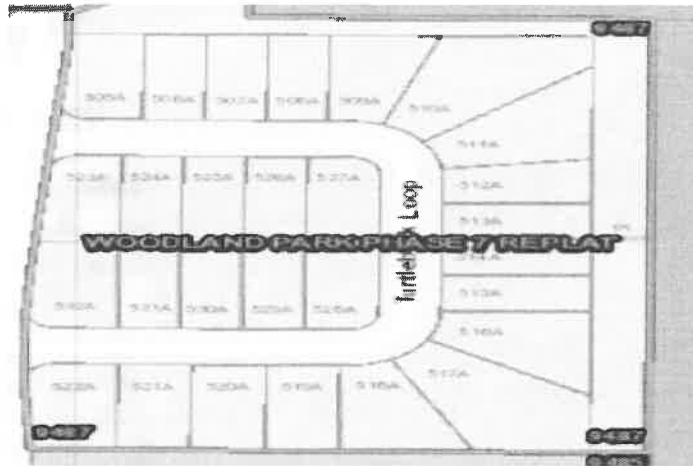
Retention Pond: The estimated assessment for the amending MSBU for maintenance of
retention ponds is \$78.00 per lot, per year.

Streetlighting: The streetlighting inventory will consist of 343 - 100 watt HPS decorative
town and country (post top) fixtures with 343 - 14 foot composite poles.
The estimated assessment for the amending MSBU for streetlighting is
\$101.00 per lot, per year. Last year's assessment was \$127.00 per lot.

Effective Date: The amending MSBU's would be effective November 1, 2022.

Action Requested: Approval of attached resolution for maintenance of retention ponds and
streetlighting.

Woodland Park Area



**RESOLUTION
OF THE
BOARD OF COUNTY COMMISSIONERS
AMENDING AND RESTATING A
MUNICIPAL SERVICE BENEFIT UNIT
FOR STREETLIGHTING
FOR**

**Woodland Park Area
11/2022**

WHEREAS, Section 125.01 (1) (q), Florida Statutes, grants Orange County ("County") the power to establish Municipal Service Benefit Units ("MSBU") for any part of the unincorporated area of the County, and

WHEREAS, Section 197.3632, Florida Statutes, authorizes the levy, collection, and enforcement of non-ad valorem assessments in the same manner as ad valorem taxes; and

WHEREAS, the Board of County Commissioners of Orange County ("Board") is the governing board of the County; and

WHEREAS, by the Resolution dated **April 27, 2021**, the Board established the **Woodland Park Area 11/2021** MSBU for streetlighting ("Resolution"), said Resolution being recorded in Official Records as Document Instrument Number **20210266697**, Pages **1 through 5**, Public Records of Orange County, Florida; and

WHEREAS, the County has now received a request, in writing, from Frederick Miller and Rueben P ("Developers") of Taylor Morrison of Florida, Inc. for the amendment of such Resolution to combine and include the subdivisions which are more fully described below in that portion of the unincorporated area of Orange County and to increase the existing streetlighting inventory from 308 - 100 watt high pressure sodium decorative town and country (post top) fixtures with 308 - 14 foot composite poles to 343 - 100 watt high pressure sodium decorative town and country (post top) with 343 - 14 foot composite poles; and

WHEREAS, this Board has determined that the amendment and restatement of the existing MSBU, the purpose of which is to combine and include the subdivisions which are more fully described below and to increase the existing streetlighting inventory as requested by the Developer, together with the other information pertaining to the operation of the proposed MSBU submitted therewith, to be feasible, necessary to facilitate the services desired and in the public interest, and that the properties will be benefited, now and in the future, and that the existing MSBU should be amended and restated to combine said subdivisions and to increase the existing streetlighting inventory; and

THEREFORE, BE IT RESOLVED BY THE BOARD OF COUNTY COMMISSIONERS OF ORANGE COUNTY, FLORIDA:

1. The foregoing "WHEREAS" clauses are presumed to be true and correct and are hereby incorporated into the text of the resolution.

RECORDING DEPARTMENT: RETURN TO FINANCE & ACCOUNTING SPECIAL ASSESSMENTS

2. The **Woodland Park Area 11/2021** Resolution for streetlighting which is recorded in Official Records as Document Instrument Number **20210266697**, Pages **1 through 5**, Public Records of Orange County, Florida, is hereby amended as the **Woodland Park Area 11/2022** MSBU, subject to final adjustment and approval as provided for in Section 197.3632, Florida Statutes. This MSBU is to combine and include said subdivisions, the boundaries of which appear on the recorded plats of **Woodland Park Phase 1A, Woodland Park Phase 2, Woodland Park Phase 3, Woodland Park Phase 4, Woodland Park 5, Woodland Park Phase 6, Woodland Park Phase 7, Woodland Park Phase 10, Woodland Park Phase 7 Replat and Woodland Park Phase 8** subdivisions, Plat Books, Pages, Sections, Townships, Ranges, and Lots, as shown in **Exhibit "A" of this resolution**, Public Records of Orange County, Florida and to increase the streetlighting inventory which is more fully described below. The purpose of such MSBU is to provide for collection and disbursement by the County of such funds as may be necessary to pay the annual expense of standard operation and maintenance of streetlighting equipment within the MSBU, including energy charges, streetlighting fixtures, poles, wires, conduits, and all appurtenances necessary for such streetlighting, electrical services and current used in their operation, and for payment of administrative costs and appropriate reserves for cash balance. It is the understanding of the County that the **Orlando Utilities Commission** is to construct, or has constructed in accordance with standards approved by the Orange County Public Works Department, all necessary streetlighting equipment at no expense to the County, prior to or during construction of those portions of Woodland Park Area subdivision and that the Orlando Utilities Commission will assume standard maintenance and operation of such equipment, subsequent to such construction, including computation of the annual and monthly charges for such standard maintenance and operation. Such equipment is to include **343 - 100 watt high pressure sodium decorative town and country (post top)** fixtures with **343 – 14 foot composite** poles at **\$13.09** per fixture and pole, per month for a yearly rate of **\$55,240.04**, which includes energy costs and excludes the cost of administering the district as set out below, or at a rate or rates as may be set by the properly constituted legal authorities who control, govern and set the rates for the Orlando Utilities Commission for the services described herein. It is further understood by the County that the Orlando Utilities Commission may construct such streetlighting equipment only in those portions of the MSBU as may be necessary concurrent with the development of Woodland Park Area subdivision and that the streetlighting district created herein will be operated only in such portions of the MSBU until such construction is completed in other portions of the MSBU; provided that if such construction is only to be in portions of such MSBU, a complete legal description of the portion or portions developed be filed with the Clerk of the Board. After presentation and approval by the Board, it is understood and agreed between the County and the Developer that (if applicable) as Woodland Park Area subdivision expands the additional Additions, Phases, Sections, Units and/or etc., as the case may be, may be permitted to join into this Resolution under the same terms and conditions as represented herein, by presenting an appropriate amendatory resolution to the Board for consideration. **It is further understood that the revised contract between the County and the Orlando Utilities Commission for Woodland Park Area subdivision will not be effective until November 1, 2022.** Streetlights installed prior to this date are the responsibility of the developer and not the County. It is further understood that only 343 - 100 watt high pressure sodium decorative town and country (post top) fixtures with 343 - 14 foot composite poles at \$13.09 per fixture and pole, per month are approved for this MSBU. Any additional streetlighting will be the responsibility of the developer.

3. Upon completion of construction of such streetlighting equipment and the placement of such equipment into operation, the Board shall determine the estimated non-ad valorem assessment amount required to pay the standard expense of maintaining and operating the streetlighting equipment in the MSBU. This non-ad valorem assessment is levied for the first time as of **November 1, 2022** and will be levied each and every year thereafter until discontinued by the Board. The Board may increase or decrease the amount of the assessment by twenty percent (20%) each and every

year thereafter to any affected property based on the benefit, which the Board will provide or has provided to the property with the revenue generated by the assessment. The property owners within Woodland Park Area subdivision shall pay any cost exceeding standard operating and maintenance expense as determined by the Board. It is the intent of the County that the Uniform Method for the levy, collection, and enforcement of non-ad valorem assessments, as Section 197.3632, Florida Statutes, grants, shall be used for collecting the non-ad valorem assessments. One and one half dollars (\$1.50) for each lot or parcel of land shall be added by the Board to cover the costs of administering the MSBU and the total amount so determined shall be specially assessed against the real property of the freeholders in the MSBU as provided hereafter. Additional amounts will be added to provide for reimbursement of necessary administrative costs incurred by the Property Appraiser and Tax Collector for the collection of non-ad valorem assessments subject to the provision of Section 197.3632, Florida Statutes, and for the establishment and maintenance of a reserve for cash balance for the purpose of paying expenses from October 1 of the ensuing fiscal year until the time when the revenue for that year are expected to be available. Administrative costs shall include, but not be limited to, those costs associated with personnel, forms, supplies, data processing, computer equipment, postage, and programming. The County may spend from its general fund, such sums as may be necessary to operate, maintain, and administer the MSBU hereby created and the County will be reimbursed to such extent at such time as such assessments have been collected. The estimated annual cost of operating, maintaining, and administering such streetlighting equipment, including the establishment and maintenance of an appropriate reserve for cash balance, is **\$75,245.00** and the estimated annual charge to each individual freeholder is **\$101.00**. Proceeds of collection of such assessments as provided hereinafter are to be put into a special revenue fund of the County to the credit of the MSBU, and are to be used only by the district as provided herein.

4. Upon completion of construction of such streetlighting equipment and the placement of such equipment into operation, and for each and every year thereafter, a non-ad valorem special assessment roll setting forth a description of each lot or parcel of land subject to the non-ad valorem special assessments in the MSBU as provided herein, including homesteads, shall be prepared by the Property Appraiser and delivered to the Board, which shall levy a non-ad valorem special assessment upon such lots or parcels as may be owned by individual freeholders, according to the recorded plats of Woodland Park Area subdivision, as shown in Exhibit "A" of this resolution, such sums as shall be necessary to pay the estimated expense of the annual operation and maintenance of such streetlighting equipment and administration of the district and appropriate reserves for cash balance for paying expenses, provided that such sums shall be assessed against the real property of each individual freeholder on a pro rata basis, and not on an ad valorem basis, so that each freeholder shall, at all times, pay an equal amount towards such cost. After the adoption of the non-ad valorem special assessment by the Board, the Property Appraiser shall extend the assessment upon the non-ad valorem assessment roll, which roll shall be fully completed prior to the time said Board sits as the Board of Tax Adjustment, during which time such assessments may be protested, reviewed, equalized, and adjusted to conform to the provisions of Sections 197.3632 and 197.3635, Florida Statutes. After adjournment as the Board of Tax Adjustment, said Board shall certify the non-ad valorem special assessment roll in the same manner and at the same time as the County Tax Roll is certified and delivered to the Tax Collector, and the said non-ad valorem special assessments shall be collected in the same manner and shall have the same priority rights, discounts for early payment, prepayment by installment method, deferred payment, penalty for delinquent payment, and issuance and sale of tax certificates and tax deeds for non-payment, and be subject to the same delinquent interest and penalties, and be treated in all respects the same as County ad valorem taxes. Said non-ad valorem special assessments, when collected by the Tax Collector shall be remitted to the Board, who shall deposit the same in such depository as shall be designated by the Board who shall apply the same to monthly bills rendered by the Orlando Utilities Commission, related administrative costs, and to the establishment and maintenance of an appropriate reserve for cash balance. From the

proceeds of said non-ad valorem special assessments, the Board shall pay the costs for having a non-ad valorem special assessment roll made and extended. The Tax Collector's office shall receive all fees and costs of sale as provided by law for the collection of ad valorem taxes, advertising, sale of lands, and issuance and sale of certificates. The Uniform Method for the levy, collection, and enforcement of non-ad valorem assessments, Section 197.3632, Florida Statutes, will be used.

5. The Board intends that non-ad valorem special assessments authorized by this resolution be collected pursuant to the Uniform Assessment Collection Act, Sections 197.3632 and 197.3635, Florida Statutes. The Board authorizes utilization of this Uniform Method of collection for all affected parcels. The non-ad valorem special assessment will be listed on the assessment roll for all affected parcels and will be included in the notice of proposed property taxes and the tax notice for each affected parcel. These non-ad valorem special assessments will be subject to all collection provisions applicable to ad valorem taxes, including discount for early payment, prepayment by installment method, deferred payment, penalty for delinquent payment, issuance of and sale of tax certificates and tax deeds for non-payment, and commissions of the Property Appraiser and the Tax Collector as provided by Florida Law.

6. In the event of division or splitting of any of the tax parcels or lots assessed herein, any such newly subdivided or split parcels shall be included in the MSBU assessments.

7. Each property owner affected by this resolution has been provided first class mail notice of the potential for loss of his or her title when the Uniform Method of collection is used and that all affected property owners have a right to appear at the hearing and to file written objections with the Board. Each property owner affected by this resolution has been provided first class mail notice of the time and place of the public hearing at which this resolution was adopted. However, under Section 119.07, Florida Statutes, certain records may be noted as exempt and confidential. This public record exemption may cause certain property owners not to receive the above first class mail notice, however, a public hearing notice conforming to the provisions of Section 197.3632, Florida Statutes, has been published in a newspaper of general circulation within Orange County.

8. The Board of County Commissioners shall be the governing board of said Municipal Service Benefit Unit.

9. This resolution which amends and restates the resolution recorded in Official Records as Document Instrument Number 20210266697, is controlling and supersedes the resolution recorded in Official Records as Document Instrument Number 20210266697, Public Records of Orange County, Florida.

ADOPTED THIS _____ DAY OF _____, 2022

ORANGE COUNTY, FLORIDA

BY: _____
ORANGE COUNTY MAYOR

DATE: _____

ATTEST: Phil Diamond, County Comptroller
as Clerk of the Board of County Commissioners

BY: _____
DEPUTY CLERK

**Woodland Park Area
Exhibit "A"**

Subdivisions	Plat Book / Pages	Section Township Range	Lots / Blocks / Buildings / Tracts / Units	Lot Count
Woodland Park Phase 1A	82/34-37	18-24-30	Lots 1 through 72	72
Woodland Park Phase 2	84/113-117	18-24-30	Lots 73 through 185	113
Woodland Park Phase 3	92/67-76	18-24-30	Lots 186 through 266	81
Woodland Park Phase 4	94/127-130	18-24-30	Lots 267 through 334	68
Woodland Park Phase 5	98/106-111	18-24-30	Lots 335 through 402	68
Woodland Park Phase 10	101/58-62	17-24-30	Lots 1 through 122	122
Woodland Park Phase 6 and 7	103/5-11	17-24-30	Lots 403 through 504	102
Woodland Park Phase 7 Replat	105/120-121	17-24-30	Lots 505A through 532A	28
Woodland Park Phase 8	104/107-113	18-24-30	Lots 533 through 623	91
			Total Lots 2022	745

RESOLUTION
OF THE
BOARD OF COUNTY COMMISSIONERS
AMENDING AND RESTATING A
MUNICIPAL SERVICE BENEFIT UNIT
FOR MAINTENANCE OF
RETENTION PONDS
IN

**Woodland Park Area
11/2022**

WHEREAS, Section 125.01 (01) (q), Florida Statutes, grants Orange County, Florida ("County") the power to establish Municipal Service Benefit Units ("MSBU") for any part of the unincorporated area of the County; and

WHEREAS, Section 197.3632, Florida Statutes, authorizes the levy, collection, and enforcement of non-ad valorem special assessments in the same manner as ad valorem taxes; and

WHEREAS, the Board of County Commissioners of Orange County ("Board") is the governing board of the County pursuant to its charter; and

WHEREAS, by the Resolution **April 27, 2021**, the Board established the **Woodland Park Area 11/2021** MSBU for maintenance of retention ponds ("Resolution)", said Resolution being recorded in Official Records as Document Instrument Number **20210266816**, Pages **1 through 5**, Public Records of Orange County, Florida; and

WHEREAS, the County has received a request, in writing, from Frederick Miller and Richard Rosello ("Developers") of Taylor Morrison of Florida, Inc. for the amendment of such Resolution to combine and include the subdivisions which are more fully described as shown in **Exhibit "B"** of this resolution and in that portion of the unincorporated area of Orange County; and

WHEREAS, the Board has determined that the amendment of the MSBU, the purpose of which is to combine and include the subdivisions which are more fully described in **Exhibit "B"** below to provide for maintenance of the county-dedicated retention ponds as requested by the Developer, together with the other information pertaining to the operation of the proposed MSBU submitted therewith, to be feasible, necessary to facilitate the services desired, and in the public interest, and that the properties will be benefited, now and in the future, and that the MSBU should be amended,

THEREFORE, BE IT RESOLVED BY THE BOARD OF COUNTY COMMISSIONERS OF ORANGE COUNTY, FLORIDA:

1. The foregoing "WHEREAS" clauses are presumed to be true and correct and are hereby incorporated into the text of the resolution.

2. The **Woodland Park Area 11/2021** Resolution for maintenance of retention ponds, which are recorded in Official Records as Document Instrument Number **20210266816**; Public Records of Orange County, Florida, is hereby amended as the **Woodland Park Area 11/2022** MSBU, subject to final adjustment and approval as provided in Section 197.3632, Florida Statutes. This MSBU is to

RECORDING DEPARTMENT: RETURN TO FINANCE & ACCOUNTING SPECIAL ASSESSMENTS

combine and include said subdivisions, the boundaries of which appear on the recorded plats of **Woodland Park Area** subdivisions, Plat Book, Pages, Section, Township, Range, and lots as shown in **Exhibit "A"** of this resolution, Public Records of Orange County, Florida. The purpose of such MSBU is to provide for collection and disbursal by the County of such funds as may be necessary for the payment of administrative costs and appropriate reserves for cash balance and the minimum maintenance services to be performed on the retention ponds located on Tracts as shown in **Exhibit "B"** of this resolution, which ponds have been dedicated to Orange County on the plats thereof and constructed in accordance with standards approved by the Orange County Public Works Division. The Developers understand that this MSBU is created solely for the purpose of maintaining the retention ponds as shown on Exhibit " B" of this resolution, and that no other ponds or infrastructure improvements located within the **Woodland Park Phase 1A, Woodland Park Phase 2, Woodland Park Phase 3, Woodland Park Phase 4, Woodland Park Phase 6, Woodland Park Phase 7, Sawgrass Landings, Woodland Park Phase 5, Woodland Park Phase 10, Woodland Park Phase 7 Replat and Woodland Park Phase 8** subdivisions may be maintained, constructed, reconstructed, improved, or repaired with the non-ad valorem special assessments collected from this MSBU.

3. The County shall perform or cause to be performed minimum maintenance services in the retention pond areas, which maintenance shall be limited to mowing, weed control, mosquito control, maintenance and repair of the structural integrity of control devices, and periodic major repairs and improvements to the retention ponds. Such maintenance shall not include curb and paved roadway maintenance and repair, signage maintenance and repair, or maintenance of or replacement of landscaping improvements. The County may subcontract with any party for the performance of the maintenance services described herein.

4. Upon completion of construction of the retention ponds and the placement of those ponds into operation, the Board shall determine the estimated non-ad valorem special assessment amount required to pay the expense of maintaining and operating the retention ponds in the MSBU. This non-ad valorem special assessment is levied for the first time as of **November 1, 2022**, and will be levied each and every year thereafter until discontinued by the Board. The Board may increase or decrease the amount of the non-ad valorem special assessment by twenty percent (20%) each and every year thereafter to any affected property based on the benefit, which the Board will provide or has provided to the property with the revenues generated by the non-ad valorem special assessments. It is the intent of the County that the Uniform Method for the levy, collection, and enforcement of non-ad valorem special assessments, as Section 197.3632, Florida Statutes, grants, shall be used for collecting the non-ad valorem special assessments. One and one half dollars (\$1.50) for each lot or parcel of land shall be added by the Board to cover the costs of administering the MSBU and the total amount so determined shall be specially assessed against the real property of the freeholders in the MSBU as provided hereafter. Additional amounts will be added to provide for reimbursement of necessary administrative costs incurred by the Property Appraiser and Tax Collector for the collection of non-ad valorem special assessments subject to the provision of Section 197.3632, Florida Statutes, and for the establishment and maintenance of a reserve for cash balance for the purpose of paying expenses from October 1 of the ensuing fiscal year until the time when the revenue for that year are expected to be available and a cash reserve for periodic major repairs and improvements to the retention ponds. Administrative costs shall include, but not be limited to, those costs associated with personnel, forms, supplies, data processing, computer equipment, postage, and programming. The County may spend from its general fund, such sums as may be necessary to operate, maintain, and administer the MSBU hereby amended and the County will be reimbursed to such extent at such time as such non-ad valorem special assessments have been collected. The estimated annual cost of operating, maintaining, and administering the MSBU, including the establishment and maintenance of an appropriate reserve for cash balance, is **\$67,626.00**, and the estimated annual non-ad valorem special assessment to each freeholder is **\$78.00**. Proceeds of collection of such non-ad valorem

special assessments as provided hereinafter are to be put into a special fund of the County to the credit of the MSBU, and are to be used only by the district as provided herein.

5. Upon completion of construction of the retention ponds and the placement of those ponds into operation, and for each and every year thereafter, a non-ad valorem special assessment roll setting forth a description of each lot or parcel of land subject to the non-ad valorem special assessments in the MSBU as provided herein, including homesteads, shall be prepared by the Property Appraiser and delivered to the Board, which shall levy a non-ad valorem special assessment upon such lots or parcels as may be necessary to pay the estimated expense of the maintenance of the retention ponds and the administration of the MSBU. Such sums shall be assessed against the real property of each individual freeholder on a pro rata basis, and not on an ad valorem basis, so that each freeholder shall, at all times, pay an equal amount toward such maintenance. After the adoption of the non-ad valorem special assessment roll by the Board, the Property Appraiser shall extend the non-ad valorem special assessment upon the non-ad valorem special assessment roll, which roll shall be fully completed prior to the time said Board sits as the Board of Tax Adjustment, during which time such non-ad valorem special assessment may be protested, reviewed, equalized, and adjusted to conform to the provisions of Sections 197.3632 and 197.3635, Florida Statutes. After adjournment as the Board of Tax Adjustment, the Board shall certify said non-ad valorem special assessment roll in the same manner and at the same time as the County Tax Roll is certified and delivered to the Tax Collector, and the non-ad valorem special assessments shall be collected in the same manner and shall have the same priority rights, discounts for early payment, prepayment by installment method, deferred payment, penalty for delinquent payment, and issuance and sale of tax certificates and tax deeds for non-payment, and be subject to the same delinquent interest and penalties, and be treated in all respects the same as County ad valorem taxes. From the proceeds of said non-ad valorem special assessments, the Board shall pay the costs of having a non-ad valorem special assessment roll made and extended. The Tax Collector's office shall receive all fees and costs of sale as provided by law for the collection of ad valorem taxes, advertising, sale of lands, and issuance and sale of certificates. The Uniform Method for the levy, collection, and enforcement of non-ad valorem special assessments, Section 197.3632, Florida Statutes, shall be used.

6. The Board intends that non-ad valorem special assessments authorized by this resolution be collected pursuant to the Uniform Assessment Collection Act, Sections 197.3632 and 197.3635, Florida Statutes. The Board authorizes utilization of this Uniform Method of collection for all affected parcels. The non-ad valorem special assessment will be listed on the non-ad valorem special assessment roll for all affected parcels and will be included in the notice of proposed property taxes and the tax notice for each affected parcel. These non-ad valorem special assessments will be subject to all collection provisions applicable to ad valorem taxes, including discount for early payment, prepayment by installment method, deferred payment, penalty for delinquent payment, issuance of and sale of tax certificates and tax deeds for non-payment, and commissions of the Property Appraiser and the Tax Collector, as provided by Florida Law. If a contract is signed between a subcontractor for maintenance service and Orange County, the effective date of enactment of the contract will coincide with the receipt of the collection of the MSBU non-ad valorem special assessments.

7. In the event of division or splitting of any of the tax parcels or lots assessed herein, any such newly subdivided or split parcels shall be included in the MSBU non-ad valorem special assessments.

8. Each property owner affected by this resolution has been provided first class mail notice of the potential for loss of his or her title when the Uniform Method of collection is used and that all affected property owners have a right to appear at the hearing and to file written objections with the Board. Each property owner affected by this resolution has been provided first class mail notice of the time

and place of the public hearing at which this resolution was adopted. However, under Section 119.07, Florida Statutes, certain records may be noted as exempt and confidential. This public record exemption may cause certain property owners not to receive the above first class mail notice, however, a public hearing notice conforming to the provisions of Section 197.3632, Florida Statutes, has been published in a newspaper of general circulation within Orange County.

9. It is understood and agreed between the County and the Developers that (if applicable) as the Sawgrass Landing and Woodland Park Areas subdivisions expand, the additional Additions, Phases, Sections, Units, and/or etc., as the case may be, may be permitted to join into this Resolution under the same terms and conditions as represented herein, by presenting an appropriate amendatory resolution to the Board for consideration.

10. The Board of County Commissioners shall be the governing board of this Municipal Service Benefit Unit.

11. This resolution which amends and restates the resolution recorded in Official Records as Document Instrument Number 20210266816, is controlling and supersedes the resolution recorded in Official Records as Document Instrument Number 20210266816, Public Records of Orange County, Florida.

ADOPTED THIS _____ DAY OF _____, 2022

ORANGE COUNTY, FLORIDA

BY: _____
ORANGE COUNTY MAYOR

DATE: _____

ATTEST: Phil Diamond, CPA, County Comptroller
as Clerk of the Board of County Commissioners

BY: _____
DEPUTY CLERK

**Woodland Park Area
Exhibit "A"**

Subdivisions	Plat Book / Page	Section Township Range	Lots / Blocks / Buildings / Tracts / Units	Lot Count
Woodland Park Phase 1A	82/34-37	18-24-30	Lots 1 through 72	72
Woodland Park Phase 2	84/113-117	18-24-30	Lots 73 through 185	113
Woodland Park Phase 3	92/67- 76	18-24-30	Lots 186 through 266	81
Woodland Park Phase 4	94/127- 130	18-24-30	Lots 267 through 334	68
Sawgrass Landings	95/62-64	18-24-30	Lots 1 through 122	122
Woodland Park Phase 5	98/106-111	18-24-30	Lots 335 through 402	68
Woodland Park Phase 10	101/58-62	17-24-30	Lots 1 through 122	122
Woodland Park Phase 6 and 7	103/5-11	17-24-30	Lots 403 through 504	102
Woodland Park Phase 7 Replat	105/120-121	17-24-30	Lots 505A through 532A	28
Woodland Park Phase 8	104/107-113	18-24-30	Lots 533 through 623	91
			Total Lots 2022	867

**Woodland Park Area
Exhibit "B"
Retention Ponds**

Subdivisions	Plat Book / Pages	Section Township Range	Tracts	Tract Count
Woodland Park Phase 1A	82/34-37	18-24-30	Tract "E" Tract "F" Tract "I"	1 1 1
Woodland Park Phase 2	84/113-117	18-24-30	Tract "K" Tract "HH"	1 1
Woodland Park Phase 3	92/67- 76	18-24-30	Tract "O" Tract "S" Tract "U"	1 1 1
Woodland Park Phase 4 Drains into	94/127- 130	18-24-30	Tract "K"	0
Sawgrass Landings Drains into	95/62-64	18-24-30	Tract "I" Tract "HH"	0
Woodland Park Phase 5	98/106-111	18-24-30	Tract "SP-1"	1
Woodland Park Phase 10	101/58-62	17-24-30	Tract "RR" Tract "SS"	1 1
Woodland Park Phase 6 and 7	103/5-11	17-24-30	Tract "SP-2" Tract "SP-3"	1 1
Woodland Park Phase 7 Replat	105/120-121	17-24-30	Tract "SP-3"	0
Woodland Park Phase 8	104/107-113	18-24-30	Tract "SP-4"	1
			Total Tracts 2022	14

