



Interoffice Memorandum

June 3, 2019

TO: Mayor Jerry L. Demings
and Board of County Commissioners

FROM: Diana M. Almodovar, P. E., Interim Director, Public Works Department

CONTACT PERSON: Christine N. Lofye, P. E., Manager *CZ*
Traffic Engineering Division

PHONE NUMBER: (407) 836-7891

SUBJ: **Installation of Traffic Control Devices and "No Parking" signs in Winding Bay Preserve**

Our staff recommends that the following traffic control devices be installed in Winding Bay Preserve:

Install "STOP" signs on:
Spring Arbor Lane at Avalon Road

The Fire Marshal recommends that the following "No Parking" signs be installed in Winding Bay Preserve:

Install "NO PARKING" signs on:
Spring Arbor Lane

Action Requested: Approval of Traffic Control Devices and "No Parking" signs installation in Winding Bay Preserve. District 1.

DMA/CNL/AHW/wjn

Attachments

WINDING BAY PRESERVE
LOCATED IN SECTION 17, TOWNSHIP 24 SOUTH, RANGE 27 EAST
ORANGE COUNTY, FLORIDA
DISTRICT # 1

STOP/STREET

(1)	(Ft E)	on Spring Arbor Lane (9 INCH) at Avalon Road (9 INCH)	10200 11200
------------	---------------	--	------------------------

STOP/ALLEY

(2a)	(Ft N)	on Hanlon Terrace Alley (SB) at Spring Arbor Lane
-------------	---------------	--

(3a)	(Ft S)	on Hanlon Terrace Alley (NB) (STOP ONLY) at Spring Arbor Lane
-------------	---------------	--

(4a)	(Ft N)	on Hanlon Terrace Alley at Spring Arbor Lane (south leg)
-------------	---------------	---

SPEED LIMIT 25 MPH

(5)	(Ft E)	on Spring Arbor Lane at Avalon Road
------------	---------------	--

KEEP RIGHT

(6)	(Ft E)	on Spring Arbor Lane at Avalon Road
------------	---------------	--

(7)	(Ft W)	on Spring Arbor Lane at Hanlon Terrace Alley
------------	---------------	---

END OF ROAD

(8)	(Ft W)	on Spring Arbor Lane at Hanlon Terrace Alley
------------	---------------	---

NO PARKING with arrows

on Spring Arbor Lane from Avalon Road extending east, south and west into the cul-de-sac on the north, south, east, and west, sides as shown on the attached parking plan map see items A, B, and C for sign designations and locations

**ahw/
06/03/2019**

WINDING BAY PRESERVE
LOCATED IN SECTION 17, TOWNSHIP 24 SOUTH, RANGE 27 EAST
ORANGE COUNTY, FLORIDA
DISTRICT # 1

STOP/STREET

(1)	(Ft E)	on Spring Arbor Lane (9 INCH) at Avalon Road (9 INCH)	10200 11200
------------	---------------	--	------------------------

STOP/ALLEY

(2a)	(Ft N)	on Hanlon Terrace Alley (SB) at Spring Arbor Lane	
(3a)	(Ft S)	on Hanlon Terrace Alley (NB) (STOP ONLY) at Spring Arbor Lane	
(4a)	(Ft N)	on Hanlon Terrace Alley at Spring Arbor Lane (south leg)	

SPEED LIMIT 25 MPH

(5)	(Ft E)	on Spring Arbor Lane at Avalon Road	
------------	---------------	--	--

KEEP RIGHT

(6)	(Ft E)	on Spring Arbor Lane at Avalon Road	
(7)	(Ft W)	on Spring Arbor Lane at Hanlon Terrace Alley	

END OF ROAD

(8)	(Ft W)	on Spring Arbor Lane at Hanlon Terrace Alley	
------------	---------------	---	--

NO PARKING with arrows

on Spring Arbor Lane from Avalon Road extending east, south and west into the cul-de-sac on the north, south, east, and west, sides as shown on the attached parking plan map see items A, B, and C for sign designations and locations

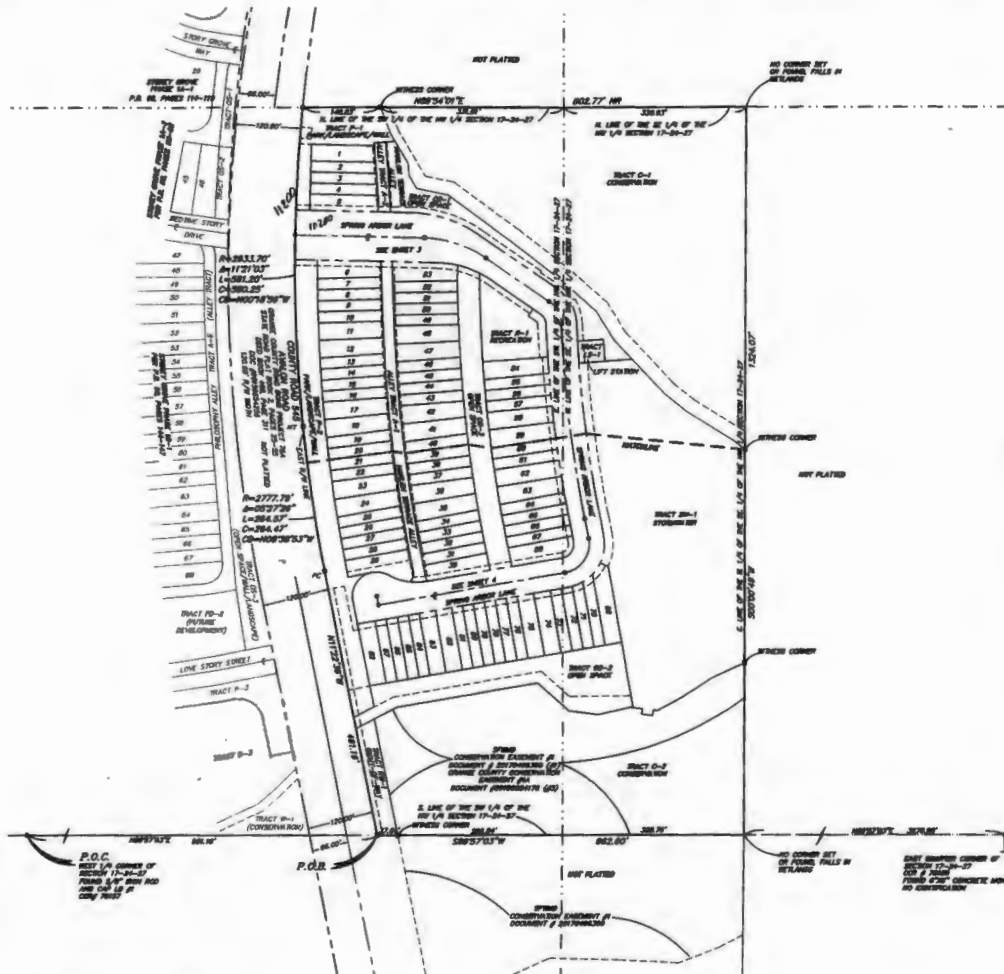
**ahw/
06/03/2019**

WINDING BAY PRESERVE

**LOCATED IN SECTION 17, TOWNSHIP 24 SOUTH, RANGE 27 EAST
ORANGE COUNTY, FLORIDA**

PLAT BOOK _____ PAGE _____

SHEET 2 OF 4



- LEGEND:**
- P.A.C. ADJACENT POINT OF CONVEYANCE
 - P.A.S. ADJACENT POINT OF SURVEY
 - P.A. ADJACENT SPECIAL ADJACENT ROAD
 - P.A. ADJACENT PLAT ROAD
 - P.A.S. ADJACENT PLAT ROAD
 - P.O. ADJACENT POINT OF CONVEYANCE
 - P.P. ADJACENT POINT OF SURVEY
 - P.R. ADJACENT POINT OF REVERSE CURVATURE
 - P.V. ADJACENT POINT OF VERTICAL CURVATURE
 - P.W. ADJACENT POINT OF WINDING
 - P.Y. ADJACENT POINT OF YIELDING
 - P.Z. ADJACENT POINT OF ZONING
 - P.A. ADJACENT POINT OF ADJACENT
 - P.B. ADJACENT POINT OF BOUNDARY
 - P.C. ADJACENT POINT OF CURVATURE
 - P.D. ADJACENT POINT OF DRAINAGE
 - P.E. ADJACENT POINT OF ELEVATION
 - P.F. ADJACENT POINT OF FLOODING
 - P.G. ADJACENT POINT OF GROUNDWATER
 - P.H. ADJACENT POINT OF HEIGHT
 - P.I. ADJACENT POINT OF INTERSECTION
 - P.J. ADJACENT POINT OF JUNCTION
 - P.K. ADJACENT POINT OF KINK
 - P.L. ADJACENT POINT OF LIFT
 - P.M. ADJACENT POINT OF MOUNTAIN
 - P.N. ADJACENT POINT OF NADIR
 - P.O. ADJACENT POINT OF ORIGIN
 - P.P. ADJACENT POINT OF PITCH
 - P.Q. ADJACENT POINT OF QUANTITY
 - P.R. ADJACENT POINT OF RADIUS
 - P.S. ADJACENT POINT OF SLOPE
 - P.T. ADJACENT POINT OF TANGENT
 - P.U. ADJACENT POINT OF UPLIFT
 - P.V. ADJACENT POINT OF VERTICAL CURVATURE
 - P.W. ADJACENT POINT OF WINDING
 - P.X. ADJACENT POINT OF X-SECTION
 - P.Y. ADJACENT POINT OF YIELDING
 - P.Z. ADJACENT POINT OF ZONING



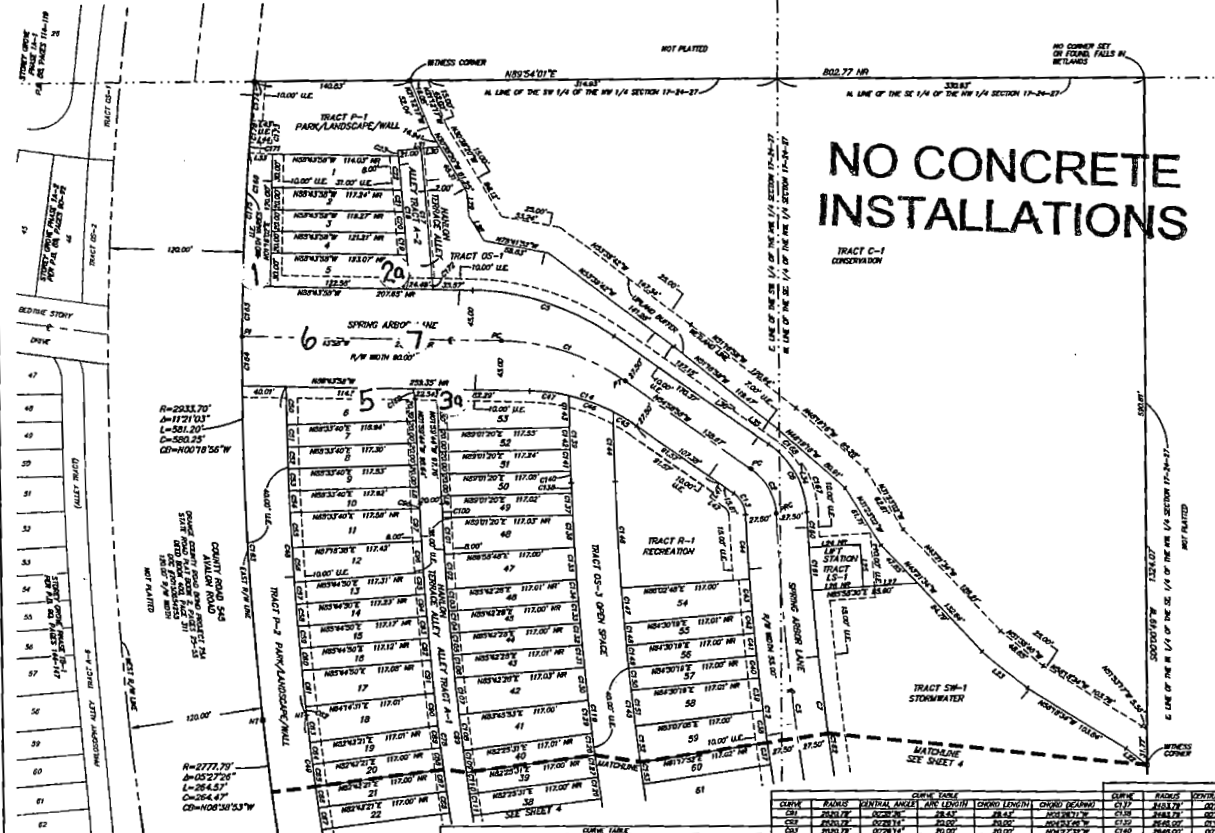
16 EAST PLANT STREET
ORANGE COUNTY, FLORIDA 32067
(407) 884-0308
L3 #9733

SHEET INDEX:
 SHEET 1 of 4 - legal description, dedication
 SHEET 2 of 4 - boundary information, legend
 SHEET 3 of 4 - plat

WINDING BAY PRESERVE

**LOCATED IN SECTION 17, TOWNSHIP 24 SOUTH, RANGE 27 EAST
ORANGE COUNTY, FLORIDA**

NO CONCRETE INSTALLATIONS



CHUNK	BEARING	DISTANCE	CHUNK	BEARING	DISTANCE
01	N87.50°W	125.87	05	N87.50°W	125.87
02	N87.50°W	125.87	06	N87.50°W	125.87
03	N87.50°W	125.87	07	N87.50°W	125.87
04	N87.50°W	125.87	08	N87.50°W	125.87
05	N87.50°W	125.87	09	N87.50°W	125.87
06	N87.50°W	125.87	10	N87.50°W	125.87
07	N87.50°W	125.87	11	N87.50°W	125.87
08	N87.50°W	125.87	12	N87.50°W	125.87
09	N87.50°W	125.87	13	N87.50°W	125.87
10	N87.50°W	125.87	14	N87.50°W	125.87
11	N87.50°W	125.87	15	N87.50°W	125.87
12	N87.50°W	125.87	16	N87.50°W	125.87
13	N87.50°W	125.87	17	N87.50°W	125.87
14	N87.50°W	125.87	18	N87.50°W	125.87
15	N87.50°W	125.87	19	N87.50°W	125.87
16	N87.50°W	125.87	20	N87.50°W	125.87
17	N87.50°W	125.87	21	N87.50°W	125.87
18	N87.50°W	125.87	22	N87.50°W	125.87
19	N87.50°W	125.87	23	N87.50°W	125.87
20	N87.50°W	125.87	24	N87.50°W	125.87

CHUNK	BEARING	DISTANCE	CHUNK	BEARING	DISTANCE
25	N87.50°W	125.87	39	N87.50°W	125.87
26	N87.50°W	125.87	40	N87.50°W	125.87
27	N87.50°W	125.87	41	N87.50°W	125.87
28	N87.50°W	125.87	42	N87.50°W	125.87
29	N87.50°W	125.87	43	N87.50°W	125.87
30	N87.50°W	125.87	44	N87.50°W	125.87
31	N87.50°W	125.87	45	N87.50°W	125.87
32	N87.50°W	125.87	46	N87.50°W	125.87
33	N87.50°W	125.87	47	N87.50°W	125.87
34	N87.50°W	125.87	48	N87.50°W	125.87
35	N87.50°W	125.87	49	N87.50°W	125.87
36	N87.50°W	125.87	50	N87.50°W	125.87
37	N87.50°W	125.87	51	N87.50°W	125.87
38	N87.50°W	125.87	52	N87.50°W	125.87

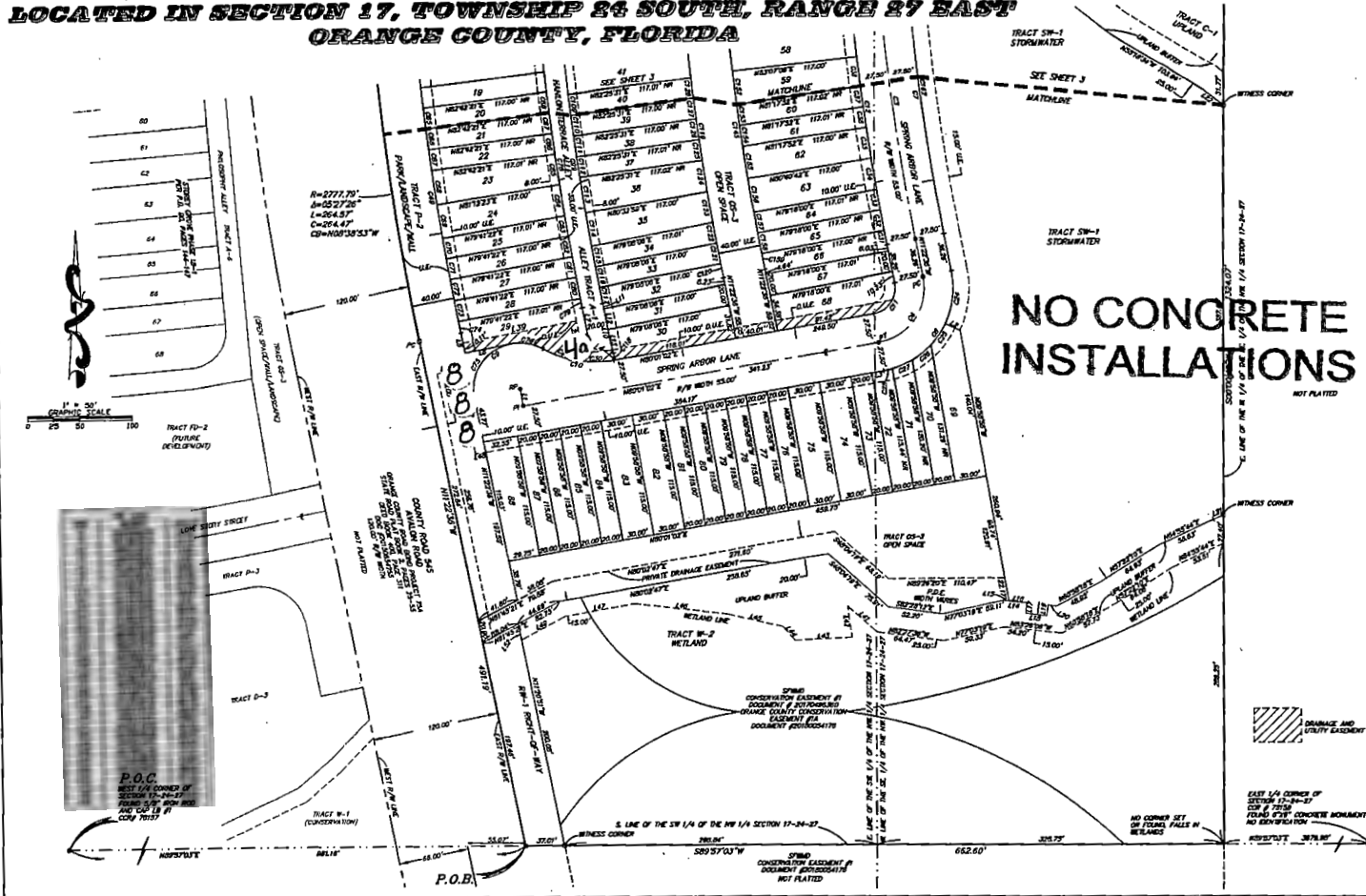
CHUNK	BEARING	DISTANCE	CHUNK	BEARING	DISTANCE
53	N87.50°W	125.87	67	N87.50°W	125.87
54	N87.50°W	125.87	68	N87.50°W	125.87
55	N87.50°W	125.87	69	N87.50°W	125.87
56	N87.50°W	125.87	70	N87.50°W	125.87
57	N87.50°W	125.87	71	N87.50°W	125.87
58	N87.50°W	125.87	72	N87.50°W	125.87
59	N87.50°W	125.87	73	N87.50°W	125.87
60	N87.50°W	125.87	74	N87.50°W	125.87
61	N87.50°W	125.87	75	N87.50°W	125.87
62	N87.50°W	125.87	76	N87.50°W	125.87
63	N87.50°W	125.87	77	N87.50°W	125.87
64	N87.50°W	125.87	78	N87.50°W	125.87
65	N87.50°W	125.87	79	N87.50°W	125.87
66	N87.50°W	125.87	80	N87.50°W	125.87

SHEET INDEX
SHEET 1 of 4 - legal description, dedication.
SHEET 2 of 4 - boundary information, legend.
SHEET 3 & 4 of 4 - plat map.



WINDING BAY PRESERVE

LOCATED IN SECTION 17, TOWNSHIP 26 SOUTH, RANGE 27 EAST
ORANGE COUNTY, FLORIDA



CHAIN	BEARING	DISTANCE	CHORD BEARING	CHORD DISTANCE	CHAIN	BEARING	DISTANCE	CHORD BEARING	CHORD DISTANCE	CHAIN	BEARING	DISTANCE	CHORD BEARING	CHORD DISTANCE	CHAIN	BEARING	DISTANCE	CHORD BEARING	CHORD DISTANCE
C01	S89°27'	102.24'	S89°27'	102.24'	C17	N89°27'	102.24'	N89°27'	102.24'	C33	S89°27'	102.24'	S89°27'	102.24'	C49	N89°27'	102.24'	N89°27'	102.24'
C02	S89°27'	102.24'	S89°27'	102.24'	C18	N89°27'	102.24'	N89°27'	102.24'	C34	S89°27'	102.24'	S89°27'	102.24'	C50	N89°27'	102.24'	N89°27'	102.24'
C03	S89°27'	102.24'	S89°27'	102.24'	C19	N89°27'	102.24'	N89°27'	102.24'	C35	S89°27'	102.24'	S89°27'	102.24'	C51	N89°27'	102.24'	N89°27'	102.24'
C04	S89°27'	102.24'	S89°27'	102.24'	C20	N89°27'	102.24'	N89°27'	102.24'	C36	S89°27'	102.24'	S89°27'	102.24'	C52	N89°27'	102.24'	N89°27'	102.24'
C05	S89°27'	102.24'	S89°27'	102.24'	C21	N89°27'	102.24'	N89°27'	102.24'	C37	S89°27'	102.24'	S89°27'	102.24'	C53	N89°27'	102.24'	N89°27'	102.24'
C06	S89°27'	102.24'	S89°27'	102.24'	C22	N89°27'	102.24'	N89°27'	102.24'	C38	S89°27'	102.24'	S89°27'	102.24'	C54	N89°27'	102.24'	N89°27'	102.24'
C07	S89°27'	102.24'	S89°27'	102.24'	C23	N89°27'	102.24'	N89°27'	102.24'	C39	S89°27'	102.24'	S89°27'	102.24'	C55	N89°27'	102.24'	N89°27'	102.24'
C08	S89°27'	102.24'	S89°27'	102.24'	C24	N89°27'	102.24'	N89°27'	102.24'	C40	S89°27'	102.24'	S89°27'	102.24'	C56	N89°27'	102.24'	N89°27'	102.24'
C09	S89°27'	102.24'	S89°27'	102.24'	C25	N89°27'	102.24'	N89°27'	102.24'	C41	S89°27'	102.24'	S89°27'	102.24'	C57	N89°27'	102.24'	N89°27'	102.24'
C10	S89°27'	102.24'	S89°27'	102.24'	C26	N89°27'	102.24'	N89°27'	102.24'	C42	S89°27'	102.24'	S89°27'	102.24'	C58	N89°27'	102.24'	N89°27'	102.24'
C11	S89°27'	102.24'	S89°27'	102.24'	C27	N89°27'	102.24'	N89°27'	102.24'	C43	S89°27'	102.24'	S89°27'	102.24'	C59	N89°27'	102.24'	N89°27'	102.24'
C12	S89°27'	102.24'	S89°27'	102.24'	C28	N89°27'	102.24'	N89°27'	102.24'	C44	S89°27'	102.24'	S89°27'	102.24'	C60	N89°27'	102.24'	N89°27'	102.24'
C13	S89°27'	102.24'	S89°27'	102.24'	C29	N89°27'	102.24'	N89°27'	102.24'	C45	S89°27'	102.24'	S89°27'	102.24'	C61	N89°27'	102.24'	N89°27'	102.24'
C14	S89°27'	102.24'	S89°27'	102.24'	C30	N89°27'	102.24'	N89°27'	102.24'	C46	S89°27'	102.24'	S89°27'	102.24'	C62	N89°27'	102.24'	N89°27'	102.24'
C15	S89°27'	102.24'	S89°27'	102.24'	C31	N89°27'	102.24'	N89°27'	102.24'	C47	S89°27'	102.24'	S89°27'	102.24'	C63	N89°27'	102.24'	N89°27'	102.24'
C16	S89°27'	102.24'	S89°27'	102.24'	C32	N89°27'	102.24'	N89°27'	102.24'	C48	S89°27'	102.24'	S89°27'	102.24'	C64	N89°27'	102.24'	N89°27'	102.24'

ALLEN COMPANY
16 EAST PLANT STREET
WEBER, FLORIDA 32095
(407) 604-8388
LD #073

SHEET INDEX
SHEET 1 of 4 - legal description, dedication.
SHEET 2 of 4 - boundary information, legend
SHEET 3 of 4 - geometry

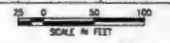
NO PARKING

NO CONCRETE INSTALLATIONS

SIGN LEDGEND



TRAFFIC SIGNS SHOWN ARE NOT INCLUDED IN THIS PLAN TO BE PERMITTED AND IMPLEMENTED BY OTHERS

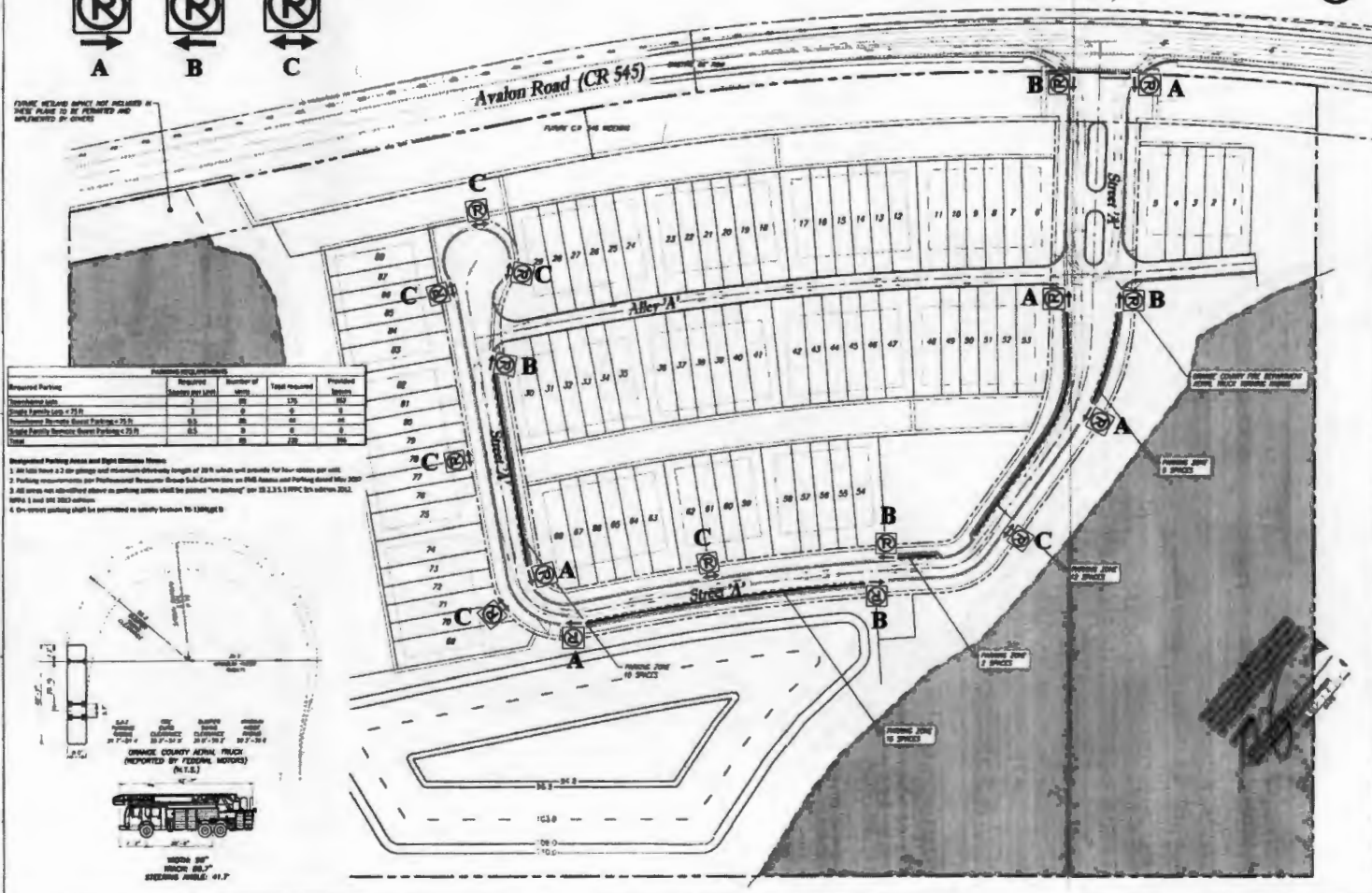
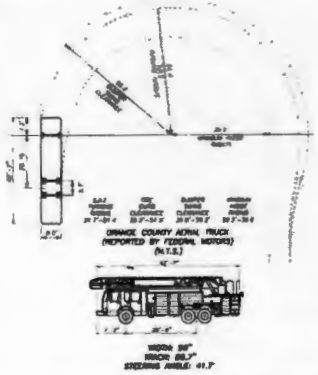


NO PARKING

NO PARKING

Required Parking	Require (Spaces per Unit)	Number of Units	Total Required	Provided (Spaces)
Commercial Units	2	20	40	40
Single Family Units < 25 ft	1	100	100	100
Two-Story Single Family Units < 25 ft	0.5	200	100	100
Single Family Detached Units < 25 ft	0.5	200	100	100
Total			240	240

- Designated Parking Areas and Sight Triangles**
- All lots have a 2' air gap and minimum driveway length of 20' which will provide for four cars per unit.
 - Parking requirements per Professional Resource Group Sub-Committee on OMB Access and Parking Board May 2009.
 - All signs are identified above on parking areas which are posted "no parking" per SB 2.3.5.1 RPPC 5th edition 2002.
 - ADA 1 and 202 2002 edition.
 - On-street parking shall be permitted in safety Section 10 1300(d) b.



Project Name: **SPRING HILL PD / HORIZON WEST VILLAGE H PARCEL 44**

APPROVED: [Signature] DATE: 11.14.2017

Submitted To: **ORANGE COUNTY, FL**

Plan Title: **PARKING DESIGNATION & TURNING ANALYSIS**

Map No: **C3.10**

Seal: **PLANNING & ENGINEERING** [Signature] [Date]

Professional Engineer: **Paula B. Stewart, LLC**

NO PARKING