

Board of County Commissioners

Public Hearings

December 1, 2020



Waterford Lakes Multi-Family Planned Development / Land Use Plan

- Case:** CDR-20-07-202
- Project Name:** Waterford Lakes Multi-Family PD
- Applicant:** Brooks Stickler, Kimley-Horn & Associates, Inc.
- District:** 4
- Acreage:** 10.08 gross acres
- Location:** 12400 and 12464 E. Colonial Drive, or generally located south of E. Colonial Drive and east of Woodbury Road
- Request:** To adjust the location of the southern access and request five (5) waivers from Orange County Code related to setbacks, parking space size, landscaping, and recreation requirements.



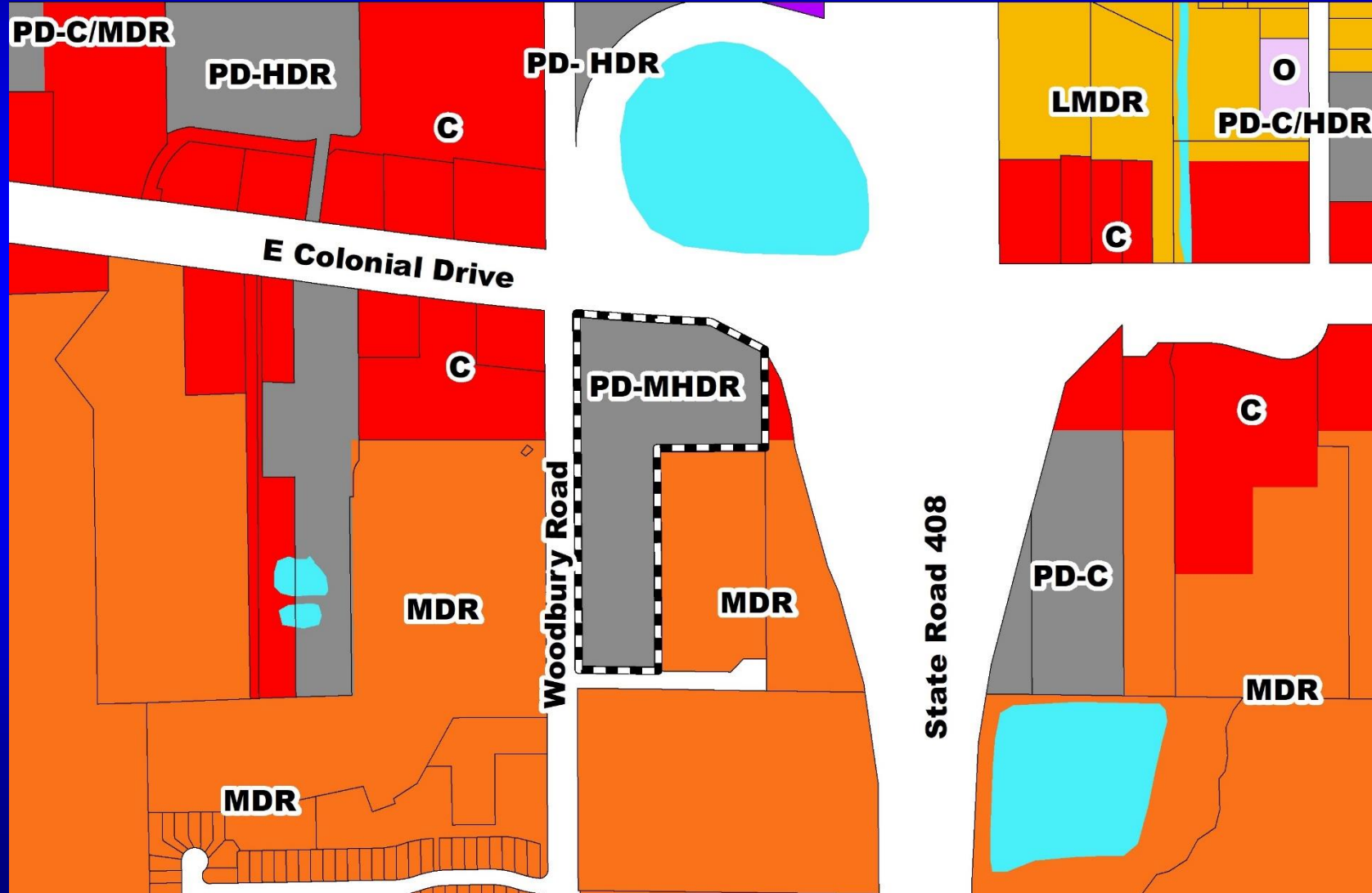
Waterford Lakes Multi-Family PD / Waterford Lakes Multi-Family Development Plan

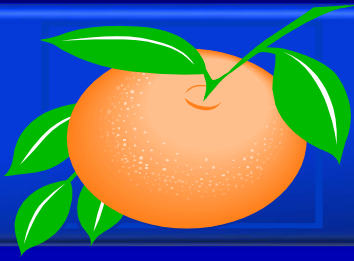
- Case:** DP-19-12-419
- Project Name:** Waterford Lakes Multi-Family PD / Waterford Lakes Multi-Family DP
- Applicant:** Brooks Stickler, Kimley-Horn & Associates, Inc.
- District:** 4
- Acreage:** 10.08 gross acres
- Location:** 12400 and 12464 E. Colonial Drive, or generally located south of E. Colonial Drive and east of Woodbury Road
- Request:** To construct 255 multi-family residential dwelling units on a total of 10.08 acres.



Waterford Lakes Multi-Family PD / Waterford Lakes Multi-Family Development Plan

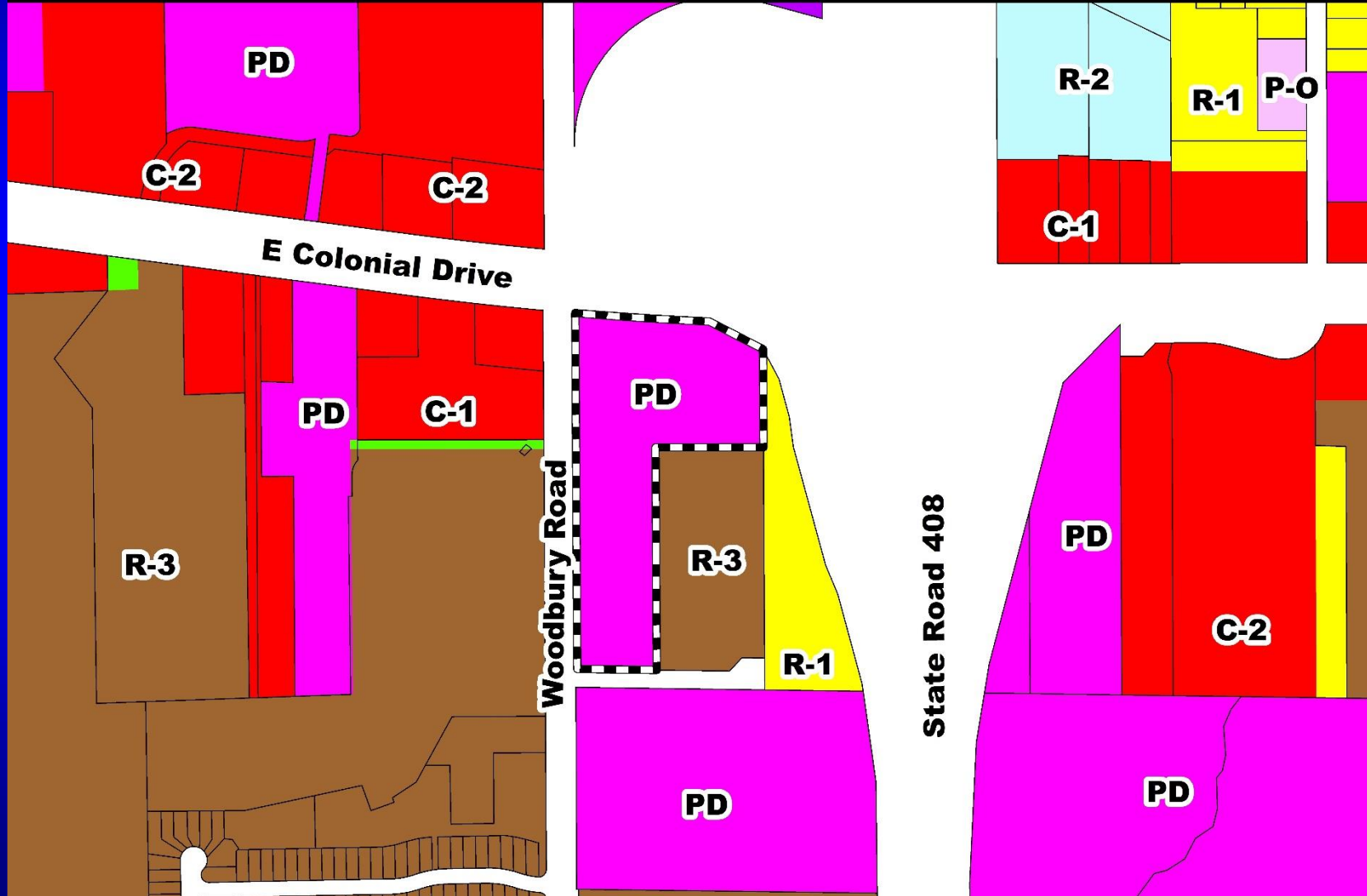
Future Land Use Map





Waterford Lakes Multi-Family PD / Waterford Lakes Multi-Family Development Plan

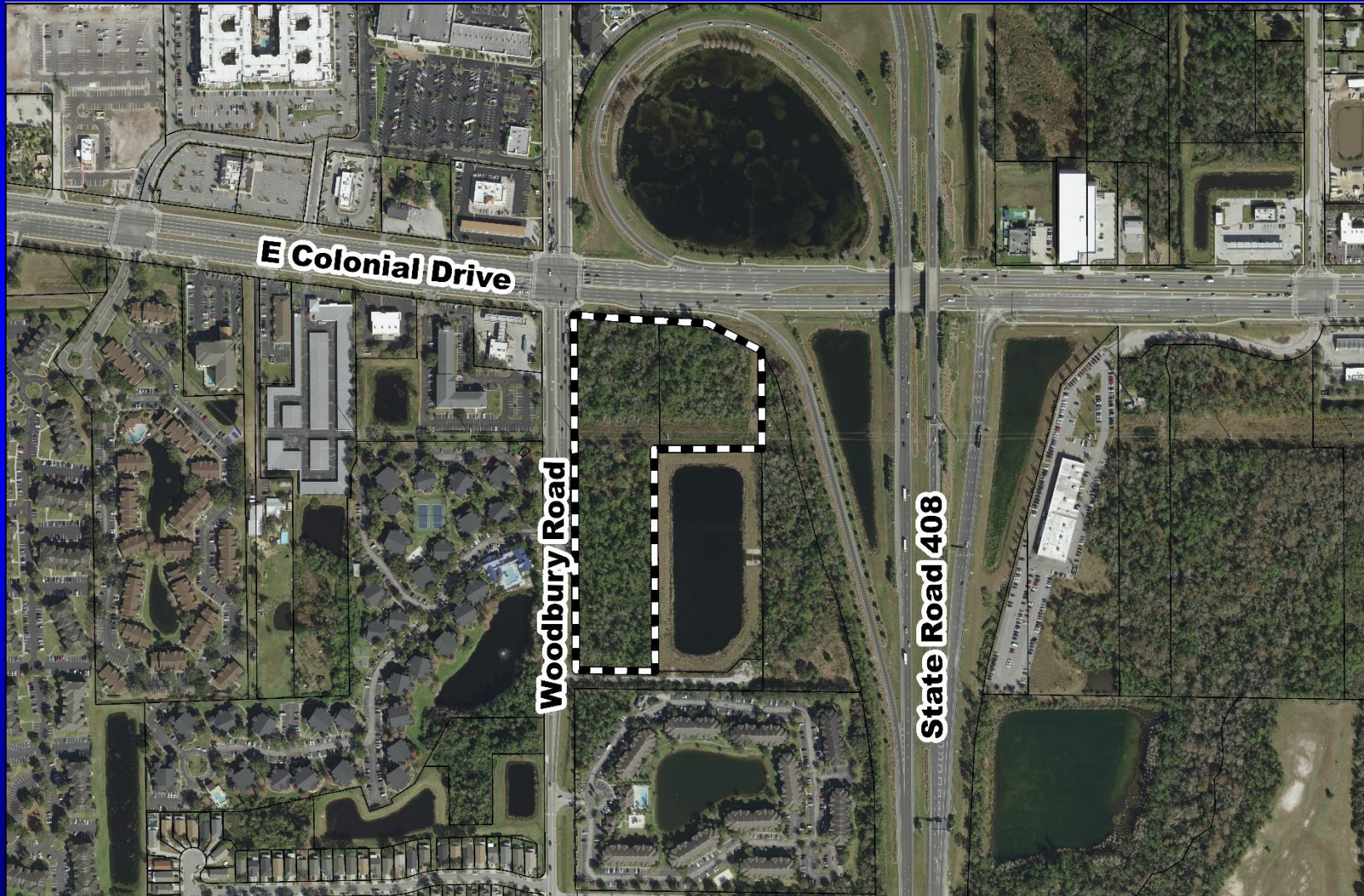
Zoning Map

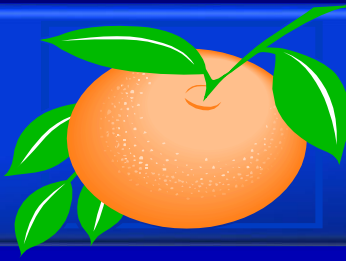




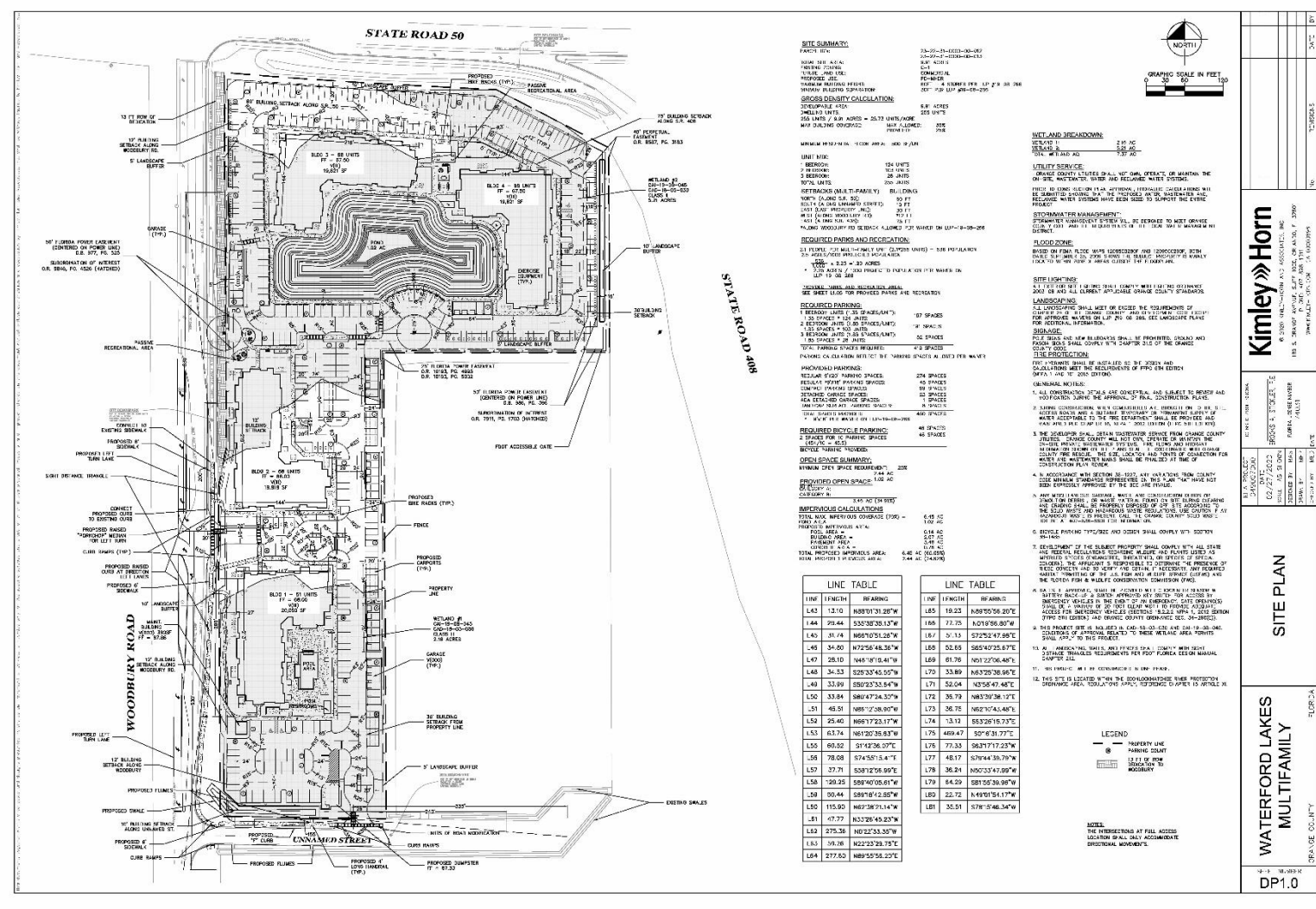
Waterford Lakes Multi-Family PD / Waterford Lakes Multi-Family Development Plan

Aerial Map





Waterford Lakes Multi-Family PD / Waterford Lakes Multi-Family Development Plan Overall Development Plan



SITE SUMMARY

TRACT NO. 24-05-11-000-00-00
 PARCEL NO. 24-05-11-000-00-00
 AREA 310.42 AC
 ZONING R-1
 USES AND USES: MULTIFAMILY RESIDENTIAL
 DEVELOPER: J.C. HORN
 PROJECT NO. 17-01-00-000
 DATE: 08-28-2018

GROSS DENSITY CALCULATION

DESIGNABLE AREA: 6.81 ACRES
 UNITS/ACRE: 25.73 UNITS/ACRE
 TOTAL UNITS: 174 UNITS

WETLAND BREAKDOWN

WETLAND: 2.16 AC
 WETLAND: 2.16 AC
 TOTAL: 2.16 AC

UTILITIES

WATER: 120 UNITS
 SEWER: 120 UNITS
 GAS: 120 UNITS
 TOTAL UNITS: 360 UNITS

REQUIRED PAPER AND REGULATION

1. TITLE PLAN (2) 1/4" = 1" SCALE
 2. DEVELOPMENT PLAN (2) 1/4" = 1" SCALE
 3. SITE PLAN (2) 1/4" = 1" SCALE
 4. CONSTRUCTION PLAN (2) 1/4" = 1" SCALE
 5. FINISH FLOOR PLAN (2) 1/4" = 1" SCALE
 6. FINISH ELEVATION (2) 1/4" = 1" SCALE
 7. FINISH SECTION (2) 1/4" = 1" SCALE
 8. FINISH DETAIL (2) 1/4" = 1" SCALE
 9. FINISH SCHEDULE (2) 1/4" = 1" SCALE
 10. FINISH SPECIFICATIONS (2) 1/4" = 1" SCALE
 11. FINISH CONTRACT (2) 1/4" = 1" SCALE
 12. FINISH AGREEMENT (2) 1/4" = 1" SCALE
 13. FINISH STATEMENT OF WORK (2) 1/4" = 1" SCALE
 14. FINISH BIDDING DOCUMENTS (2) 1/4" = 1" SCALE
 15. FINISH CONSTRUCTION DOCUMENTS (2) 1/4" = 1" SCALE
 16. FINISH AS-BUILT DOCUMENTS (2) 1/4" = 1" SCALE
 17. FINISH RECORD DRAWINGS (2) 1/4" = 1" SCALE
 18. FINISH FINAL REPORT (2) 1/4" = 1" SCALE
 19. FINISH FINAL INSPECTION REPORT (2) 1/4" = 1" SCALE
 20. FINISH FINAL CERTIFICATE OF OCCUPANCY (2) 1/4" = 1" SCALE

REQUIRED PARKING

1. 1.5 SPACES PER UNIT
 2. 1.5 SPACES PER UNIT
 3. 1.5 SPACES PER UNIT
 4. 1.5 SPACES PER UNIT
 5. 1.5 SPACES PER UNIT
 6. 1.5 SPACES PER UNIT
 7. 1.5 SPACES PER UNIT
 8. 1.5 SPACES PER UNIT
 9. 1.5 SPACES PER UNIT
 10. 1.5 SPACES PER UNIT
 11. 1.5 SPACES PER UNIT
 12. 1.5 SPACES PER UNIT
 13. 1.5 SPACES PER UNIT
 14. 1.5 SPACES PER UNIT
 15. 1.5 SPACES PER UNIT
 16. 1.5 SPACES PER UNIT
 17. 1.5 SPACES PER UNIT
 18. 1.5 SPACES PER UNIT
 19. 1.5 SPACES PER UNIT
 20. 1.5 SPACES PER UNIT

REQUIRED BIKE PARKING

1. 1.5 SPACES PER UNIT
 2. 1.5 SPACES PER UNIT
 3. 1.5 SPACES PER UNIT
 4. 1.5 SPACES PER UNIT
 5. 1.5 SPACES PER UNIT
 6. 1.5 SPACES PER UNIT
 7. 1.5 SPACES PER UNIT
 8. 1.5 SPACES PER UNIT
 9. 1.5 SPACES PER UNIT
 10. 1.5 SPACES PER UNIT
 11. 1.5 SPACES PER UNIT
 12. 1.5 SPACES PER UNIT
 13. 1.5 SPACES PER UNIT
 14. 1.5 SPACES PER UNIT
 15. 1.5 SPACES PER UNIT
 16. 1.5 SPACES PER UNIT
 17. 1.5 SPACES PER UNIT
 18. 1.5 SPACES PER UNIT
 19. 1.5 SPACES PER UNIT
 20. 1.5 SPACES PER UNIT

PERVIOUS OPEN SPACES

1. 1.5 SPACES PER UNIT
 2. 1.5 SPACES PER UNIT
 3. 1.5 SPACES PER UNIT
 4. 1.5 SPACES PER UNIT
 5. 1.5 SPACES PER UNIT
 6. 1.5 SPACES PER UNIT
 7. 1.5 SPACES PER UNIT
 8. 1.5 SPACES PER UNIT
 9. 1.5 SPACES PER UNIT
 10. 1.5 SPACES PER UNIT
 11. 1.5 SPACES PER UNIT
 12. 1.5 SPACES PER UNIT
 13. 1.5 SPACES PER UNIT
 14. 1.5 SPACES PER UNIT
 15. 1.5 SPACES PER UNIT
 16. 1.5 SPACES PER UNIT
 17. 1.5 SPACES PER UNIT
 18. 1.5 SPACES PER UNIT
 19. 1.5 SPACES PER UNIT
 20. 1.5 SPACES PER UNIT

LINE	LENGTH	BEARING
L42	13.10	N88°01'31.28"W
L44	29.44	S32°30'38.13"W
L43	31.41	N88°01'31.28"W
L45	35.50	N72°56'48.32"E
L47	28.10	N48°18'18.41"W
L48	34.33	S29°33'45.50"W
L49	33.89	S50°23'33.84"W
L50	33.84	S84°47'34.32"W
L51	48.51	N88°17'38.90"W
L52	25.40	N69°17'23.17"W
L53	33.74	N61°20'35.83"W
L53	66.52	S14°03'36.07"E
L54	78.08	S74°57'54.47"E
L57	37.71	S31°12'06.90"E
L58	129.25	S89°40'05.61"W
L59	20.44	S81°0'42.85"W
L60	115.60	N63°38'14.14"E
L61	47.77	N33°26'45.23"W
L62	275.36	N02°33'33.30"W
L63	36.38	N22°23'29.75"E
L64	277.63	N69°35'58.22"E

LINE	LENGTH	BEARING
L65	19.23	N60°50'08.20"E
L66	77.75	N01°56'00.00"W
L67	37.15	S22°25'49.88"E
L68	23.85	S65°42'33.87"E
L69	61.76	N21°22'06.40"E
L70	33.89	N63°29'36.96"E
L71	52.04	N25°47'48.71"E
L72	38.79	N63°30'38.12"E
L73	36.75	N62°10'43.60"E
L74	13.12	S53°29'16.72"E
L75	469.47	S0°0'0.00"W
L76	77.33	S0°17'12.25"W
L77	48.17	S76°44'36.78"W
L78	36.21	N02°33'42.89"W
L79	84.29	S81°00'36.98"W
L80	22.72	N49°10'51.17"W
L81	35.51	S78°15'48.34"W

LEGEND

PROPERTY LINE
 PARKING SPOT
 DRIVEWAY TO PROPERTY

NOTE:
 THE INTERSECTIONS AT FULL ACCESS
 LOCATIONS SHALL HAVE ACCOMMODATE
 DIAGONAL MOVEMENT.

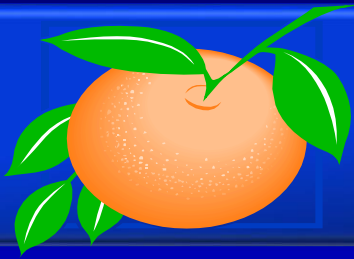
Kimley»Horn

115 S. WINDY AVENUE, SUITE 200, ORLANDO, FL 32801
 WWW.KIMLEYHORN.COM

SITE PLAN

DATE: 08-28-2018
 SCALE: 1/4" = 1'

WATERFORD LAKES MULTIFAMILY DP1.0



Action Requested

Make a finding of consistency with the Comprehensive Plan (CP) and approve the substantial change to the Waterford Lakes Multi-Family Planned Development / Land Use Plan (PD/LUP) dated “Received September 15, 2020”, subject to the conditions listed under the DRC Recommendation in the Staff Report; and

Make a finding of consistency with the Comprehensive Plan and approve the Waterford Lakes Multi-Family PD / Waterford Lakes Multi-Family DP dated “Received August 17, 2020”, subject to the conditions listed under the DRC Recommendation in the Staff Report; and

Approve Right-of-Way and Proportionate Share Agreement for Waterford Lakes Apartments (Consent Agenda item G.4)

District 4



New DP COA #22

22. Prior to site construction plan approval, the Developer shall conduct a MUTCD Traffic Signal Warrant Study for the intersection of Woodbury Rd. with the southernmost access Unnamed Road. The study shall be based on Opening Date traffic data and on Design Year Traffic Projections. If warranted, Developer shall design and construct the temporary traffic signal in conjunction with all other off-site Woodbury Rd. proposed improvements.

Board of County Commissioners

Public Hearings

December 1, 2020