



Interoffice Memorandum

August 16, 2019

TO: Mayor Jerry L. Demings
and Board of County Commissioners

FROM: Diana M. Almodovar, P.E., Interim Director, Public Works Department *DMA*

CONTACT PERSON: Christine N. Lofye, P.E., Manager
Traffic Engineering Division */s/ CL*

PHONE NUMBER: (407) 836-7891

SUBJ: **Installation of "No Parking" signs on Summerlake Groves Street in undesignated parking areas**

Citizens within the Highlands at Summerlake Groves and Watermark communities have expressed concerns relating to the ability of emergency vehicles to access their homes when vehicles are parked in undesignated parking areas along Summerlake Groves Street. Currently, Summerlake Groves Street has designated on-street parking bays in certain sections of the roadway.

Traffic Engineering has found sight restrictions at several intersections due to on-street parking in undesignated parking areas. In addition, the Fire Rescue Department has confirmed that allowing on-street parking in undesignated parking areas impedes emergency apparatus from accessing certain portions of the community, thereby creating a public safety hazard.

Florida Fire Prevention Code, Section 18.2.3.4.1.1, requires that fire department access roads shall have an unobstructed width of no less than twenty (20) feet. In addition, the Florida Fire Prevention Code, Section 18.2.4.1.1, states that the required width of a fire department access road shall not be obstructed in any manner, including the parking of vehicles.

The Fire Marshal recommends the Board approve the installation of "No Parking" signs in all areas not currently designated for on-street parking on Summerlake Groves Street to ensure safe access of emergency vehicles within the Highlands at Summerlake Groves and Watermark communities.

Action Requested: Approval of "No Parking" signs installation on Summerlake Groves Street in undesignated parking areas. District 1.

DMA/CNL/AHW

Attachments



Summerlake Groves Street District Location Map



District 1: Commissioner Betsy VanderLey

**NO CONCRETE
INSTALLATIONS**



SHEET 1 OF 4

SIGN LEGEND

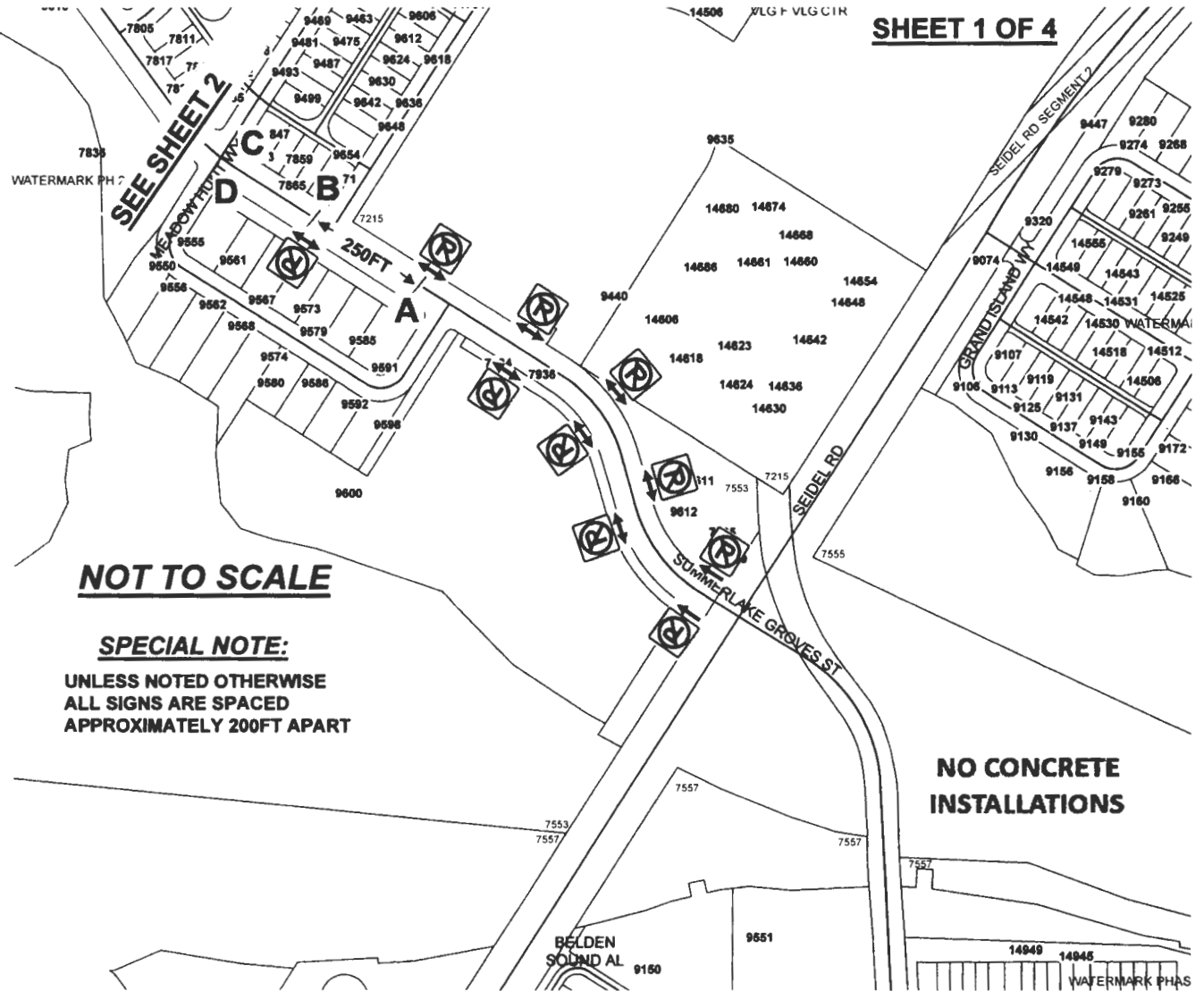
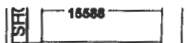
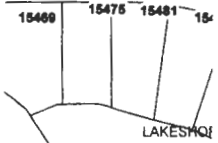
- R8-3
- R8-3
- R8-3

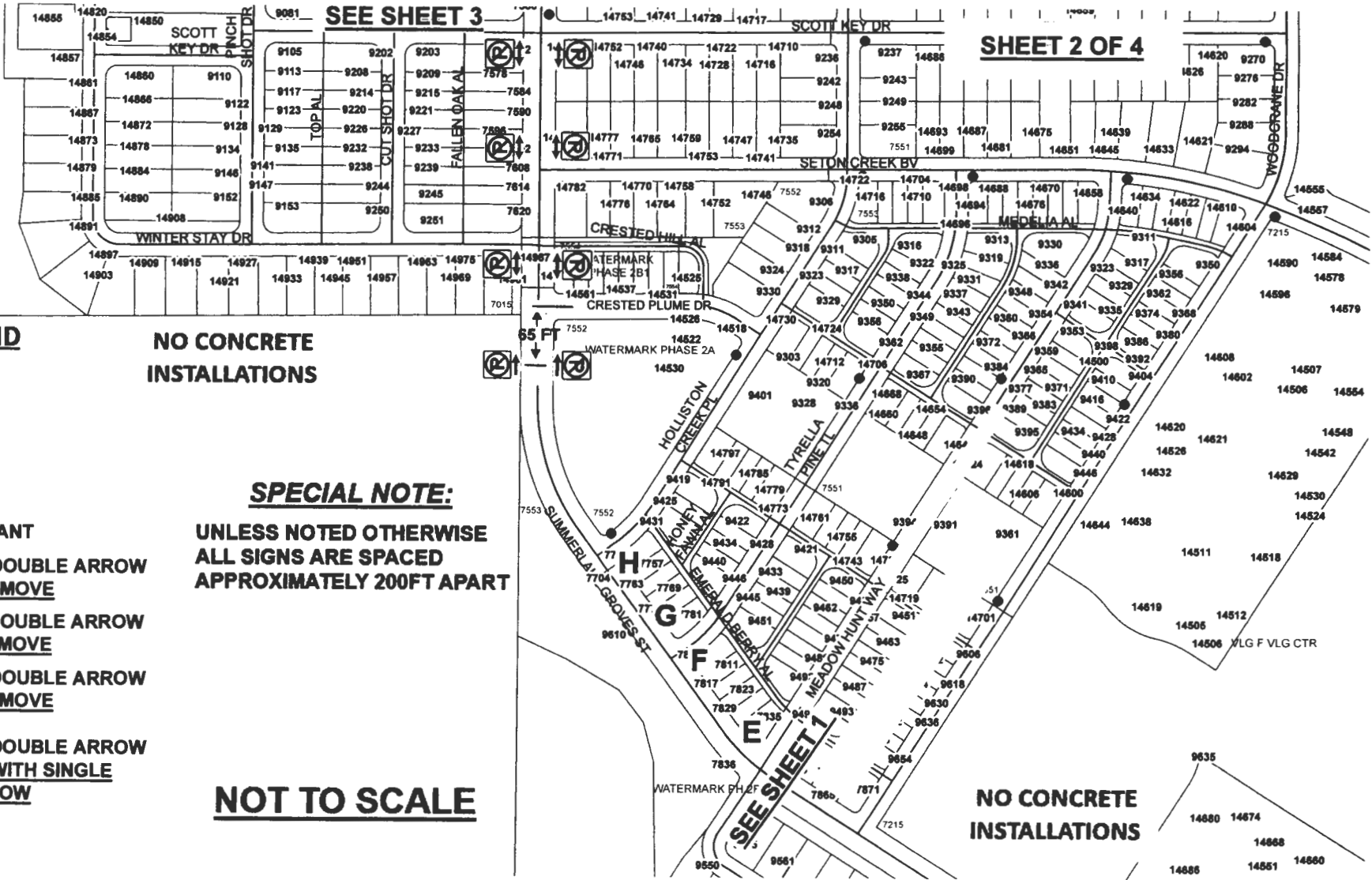
- A** - EXISTING RIGHT SINGLE ARROW REPLACE WITH DOUBLE ARROW
- B** - EXISTING DOUBLE ARROW DO NOT REMOVE
- C** - EXISTING DOUBLE ARROW DO NOT REMOVE
- D** - EXISTING DOUBLE ARROW REPLACE WITH SINGLE LEFT ARROW

NOT TO SCALE

SPECIAL NOTE:
UNLESS NOTED OTHERWISE
ALL SIGNS ARE SPACED
APPROXIMATELY 200FT APART

**NO CONCRETE
INSTALLATIONS**





SIGN LEGEND

- R8-3
- R8-3
- R8-3

- -FIRE HYDRANT
- E** -EXISTING DOUBLE ARROW
DO NOT REMOVE
- F** -EXISTING DOUBLE ARROW
DO NOT REMOVE
- G** -EXISTING DOUBLE ARROW
DO NOT REMOVE
- H** -EXISTING DOUBLE ARROW
REPLACE WITH SINGLE
RIGHT ARROW

**NO CONCRETE
INSTALLATIONS**

SPECIAL NOTE:
UNLESS NOTED OTHERWISE
ALL SIGNS ARE SPACED
APPROXIMATELY 200FT APART

NOT TO SCALE





**NO CONCRETE
INSTALLATIONS**

SHEET 2 OF 4



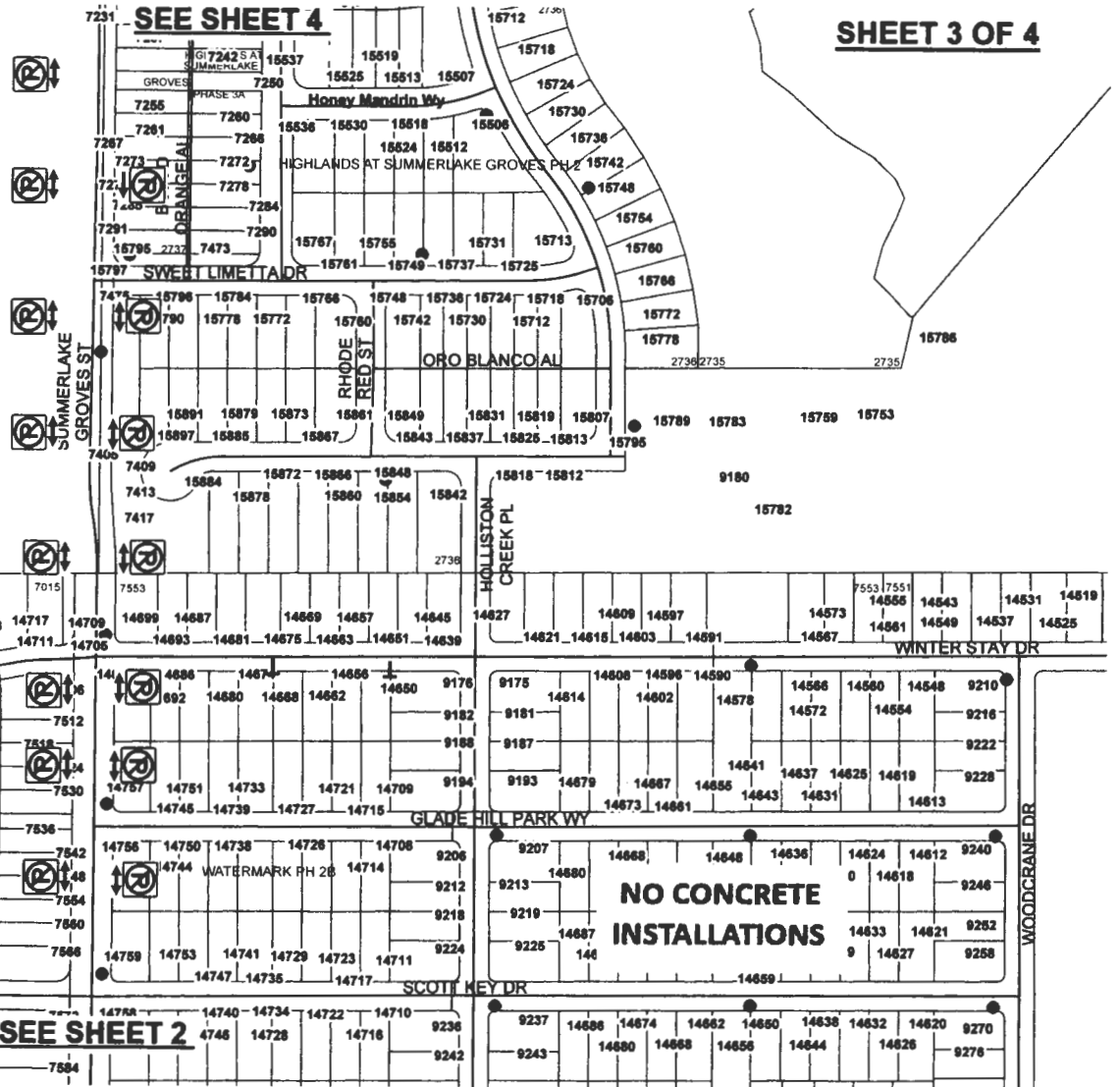
**NO CONCRETE
INSTALLATIONS**

SIGN LEGEND

-  R8-3
-  R8-3
-  R8-3
-  FIRE HYDRANT

SPECIAL NOTE:
UNLESS NOTED OTHERWISE
ALL SIGNS ARE SPACED
APPROXIMATELY 200FT APART

NOT TO SCALE





PHIL RITSON WY

1610

**NO CONCRETE
INSTALLATIONS**

SIGN LEGEND

- R8-3
- R8-3
- R8-3

●-FIRE HYDRANT

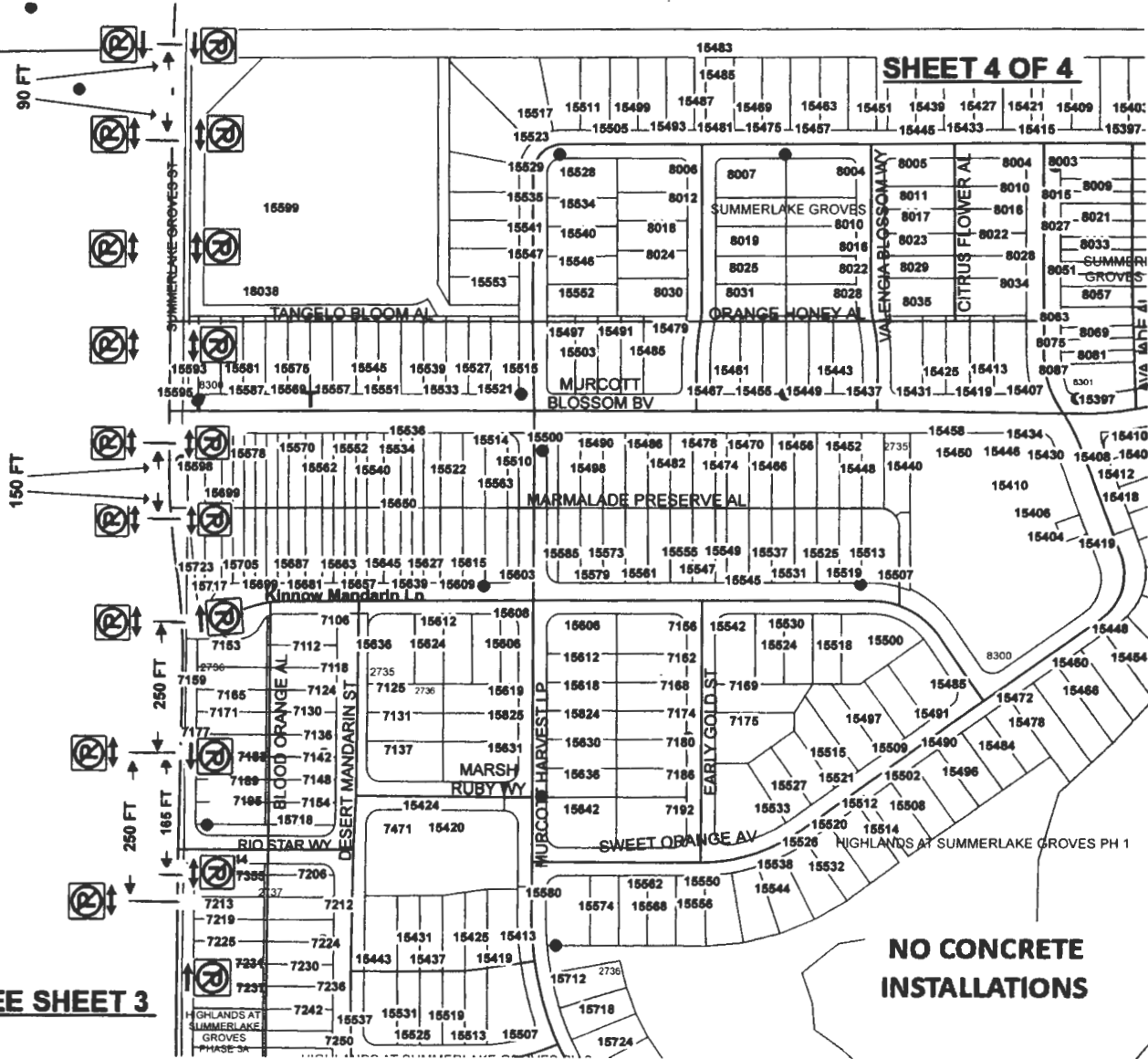
SPECIAL NOTE:

**UNLESS NOTED OTHERWISE
ALL SIGNS ARE SPACED
APPROXIMATELY 200FT APART**

NOT TO SCALE

SEE SHEET 3

SHEET 4 OF 4



**NO CONCRETE
INSTALLATIONS**