

Utilities Department

**Mandatory Refuse & Recycling
Collection Services
Tentative 2024 MSBU Rate**

June 20, 2023



Presentation Overview

- **Collection Program**
- **MSBU Background**
- **Proposed 2024 MSBU Rate**
- **Comparison of MSBU Rates**
- **Requested Action**



Presentation Overview

- **Collection Program**
- MSBU Background
- Proposed 2024 MSBU Rate
- Comparison of MSBU Rates
- Requested Action

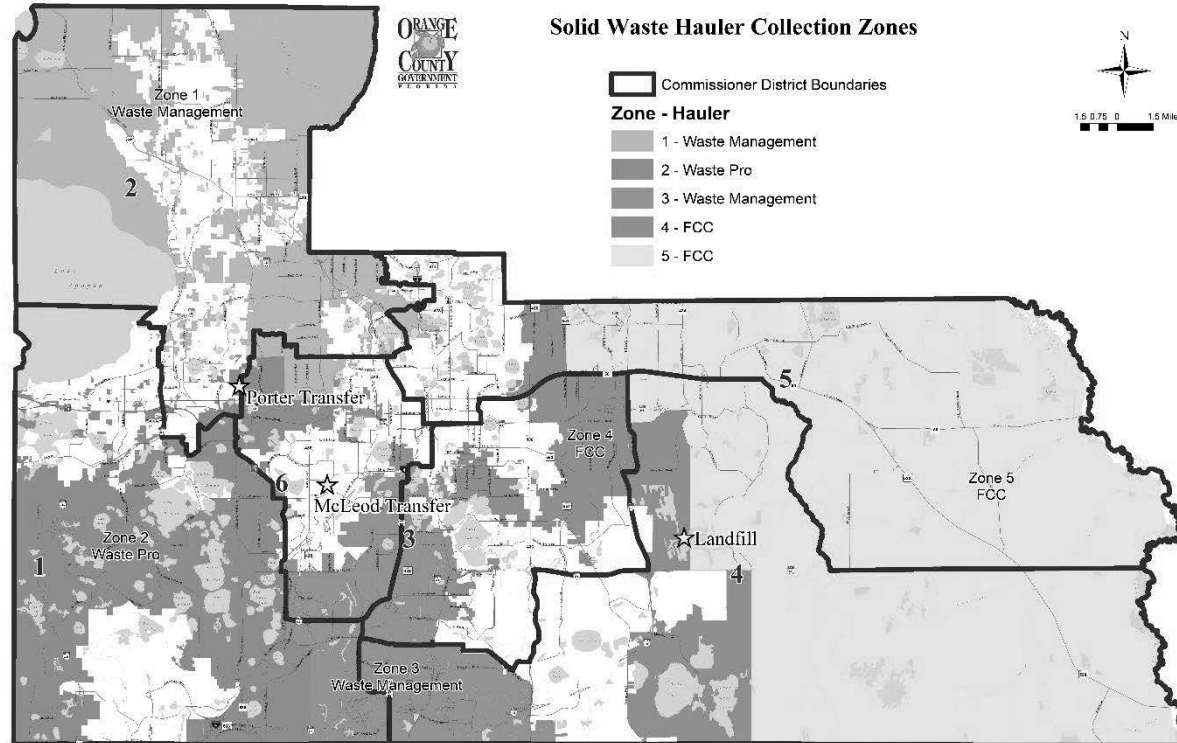


Collection Program

- **Approximately 230,000 residential households in the Solid Waste Municipal Services Benefit Unit (MSBU)**
- **Unincorporated area divided into five collection zones**
- **One exclusive collection provider per zone**
- **Weekly garbage, recycling, yard waste, and large item collections**



Collection Program

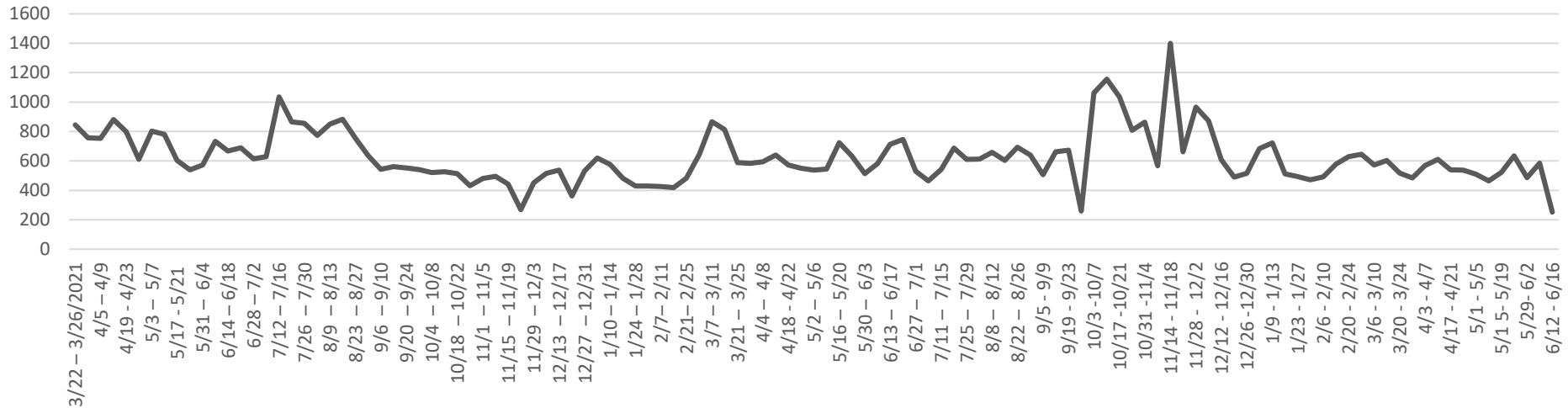




Collection Program

- Continuing to track hauler performance
- Seeing improvement since last year

Weekly Complaints March 2021 to Present





Presentation Overview

- Collection Program
- **MSBU Background**
- Proposed 2024 MSBU Rate
- Comparison of MSBU Rates
- Requested Action



MSBU Background

- **Hauler compensation initially set by bid and adjusted annually**
- **BCC approves hauler compensation by July 15**
- **BCC tentatively approves MSBU rate included in proposed property tax notice sent in August**
- **Final BCC adoption of MSBU rate at first Budget Public Hearing in September**



Presentation Overview

- Collection Program
- MSBU Background
- **Proposed 2024 MSBU Rate**
- Comparison of MSBU Rates
- Requested Action



Proposed 2024 MSBU Rate

MSBU Rate Components





Proposed 2024 MSBU Rate

■ MSBU Rate Components

—Collection

- Annual adjustment based on contract

—Disposal

- Annual adjustment based on waste generation by customers and tip fee

—Administration

- Budget reflects overhead and personnel costs





Proposed 2024 MSBU Rate

▪ MSBU Rate Components

– Recycling

- Recycling Processing Agreement
- Recycling Quality Improvement Program (RQIP)

– Carts

- Purchase for new residential units and replacement carts
- Prepare for end-of-life cart replacement

– Reserves/Rate Stabilization

- Build up reserves and smooth future rate increases



Proposed 2024 MSBU Rate

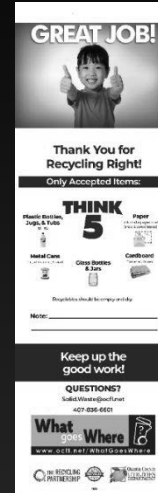
■ Recycling Highlights

—RQIP

- More than 200,000 households
- SWANA Award for Outstanding Awareness Campaign

—CentralFloridaRecycles.org

—RFP for new Materials Recovery Facility released





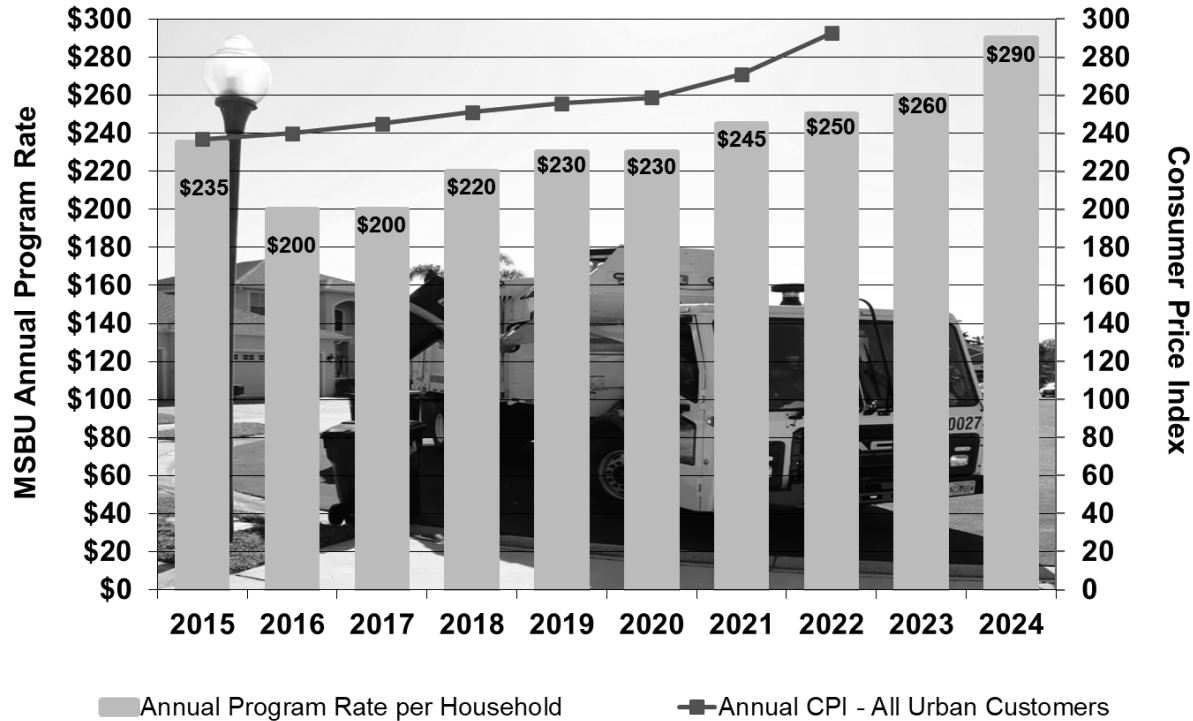
Proposed 2024 MSBU Rate

Component	CY 2023	Proposed CY 2024	Change
Collection	\$151.40	\$161.94	\$10.54
Disposal	\$56.39	\$62.19	\$5.80
Administration	\$11.81	\$13.02	\$1.21
Recycling	\$21.76	\$36.15	\$14.39
Carts	\$12.84	\$14.15	\$1.31
Reserves/Rate Stabilization	\$5.80	\$2.55	(\$3.25)
MSBU Rate per Household	\$260.00	\$290.00	\$30.00



Proposed 2024 MSBU Rate

Mandatory Refuse Program Annual Rate





Presentation Overview

- Collection Program
- MSBU Background
- Proposed 2024 MSBU Rate
- **Comparison of MSBU Rates**
- Requested Action



Comparison of MSBU Rates

- Miami-Dade County	\$484.00
- Palm Beach County*	\$462.67
- Hillsborough County	\$352.79
- Broward County	\$330.00
- Osceola County	\$329.76
- Seminole County	\$300.00
- Lee County *	\$296.33
- Orange County	\$290.00

*Average of different rates charged



Comparison of MSBU Rates

- Orange County	\$290.00
- Ocoee	\$275.28
- Winter Garden	\$264.00
- Orlando	\$250.20
- Winter Park	\$232.32
- Apopka	\$229.44



Presentation Overview

- Collection Program
- MSBU Background
- Proposed 2024 MSBU Rate
- Comparison of MSBU Rates
- **Requested Action**



Requested Action

- **Tentative approval of MSBU rate at \$290 per household for CY 2024**

AND

- **Set hauler compensation rates for CY 2024**
 - **Zone 1** **\$158.06 per household**
 - **Zone 2** **\$195.52 per household**
 - **Zone 3** **\$170.24 per household**
 - **Zone 4** **\$138.07 per household**
 - **Zone 5** **\$140.51 per household**