



Interoffice Memorandum

August 16, 2019

TO: Mayor Jerry L. Demings
and Board of County Commissioners

FROM: Diana M. Almodovar, P.E., Interim Director, Public Works Department

CONTACT PERSON: Christine N. Lofye, P.E., Manager
Traffic Engineering Division

PHONE NUMBER: (407) 836-7891

DMA
[Handwritten signature]

SUBJ: **Installation of "No Parking" signs on both sides of Marsfield Avenue from John Young Elementary School entrance to Deerfield Boulevard**

A concerned citizen has requested the Traffic Engineering Division install "No Parking" signs on both sides of Marsfield Avenue from the John Young Elementary School entrance to Deerfield Boulevard. John Young Elementary School is located north of Marsfield Avenue and parents are parking on the roadway to let students out of their cars and avoid the parent drop-off/pick-up loop.

Traffic Engineering staff have determined that parking on the roadway to drop-off/pick-up students creates a traffic hazard for both pedestrians and drivers on Marsfield Avenue.

Staff recommends the Board approve installation of "No Parking" signs on both sides of Marsfield Avenue from the John Young Elementary School entrance to Deerfield Boulevard.

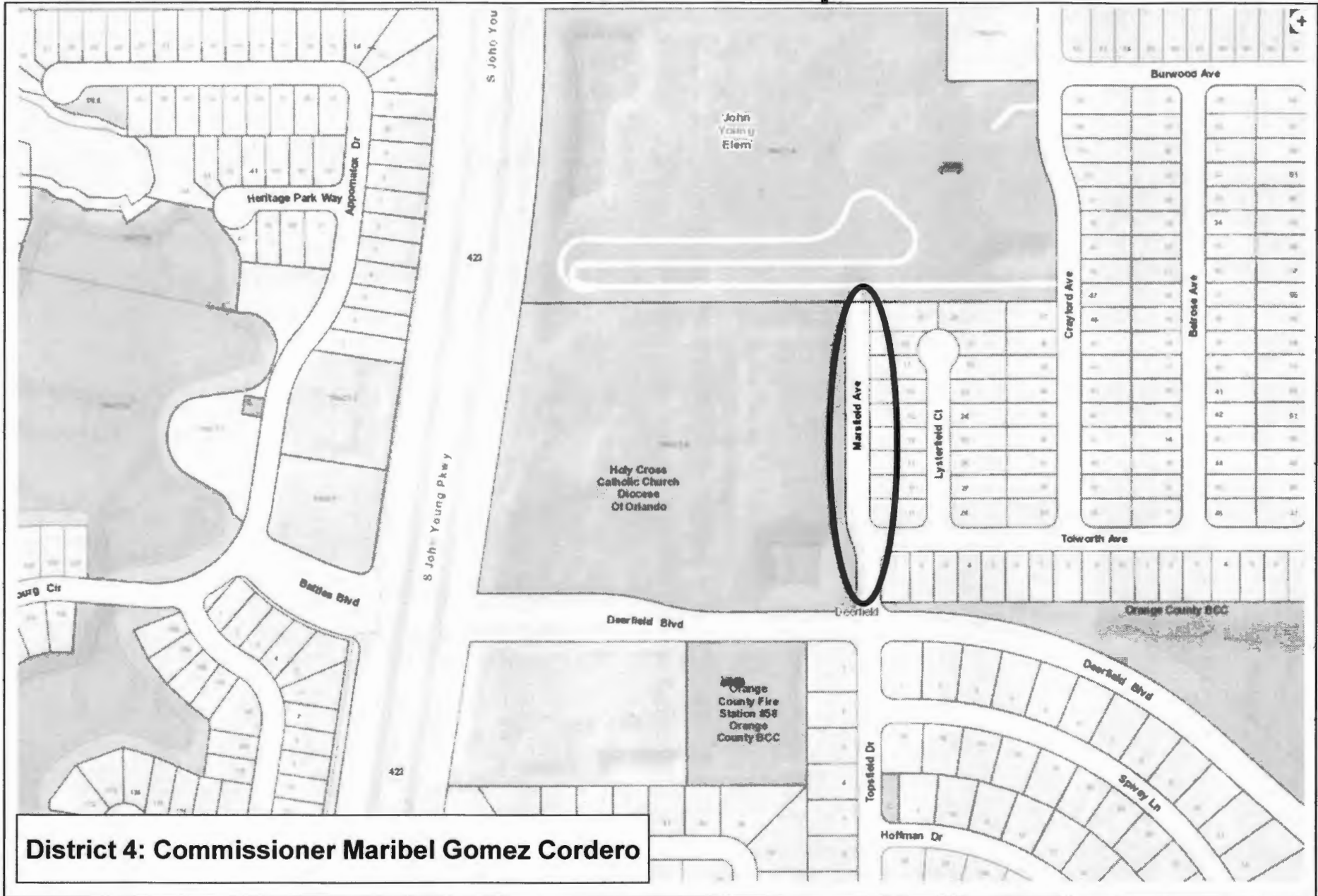
Action Requested: Approval of "No Parking" signs installation on both sides of Marsfield Avenue from John Young Elementary School entrance to Deerfield Boulevard. District 4.

DMA/CNL/CPC

Attachments



Marsfield Ave Consent Agenda District Map



District 4: Commissioner Maribel Gomez Cordero

Marsfield Ave Sign Location Map

