



Interoffice Memorandum

September 13, 2019

TO: Mayor Jerry L. Demings  
and Board of County Commissioners

FROM: Diana M. Almodovar, P.E., Interim Director, Public Works Department

CONTACT PERSON: Christine N. Lofye, P.E., Manager *CN*  
Traffic Engineering Division

PHONE NUMBER: (407) 836-7891

SUBJ: **Installation of Raised Crosswalks on North Shore Golf Club Boulevard**

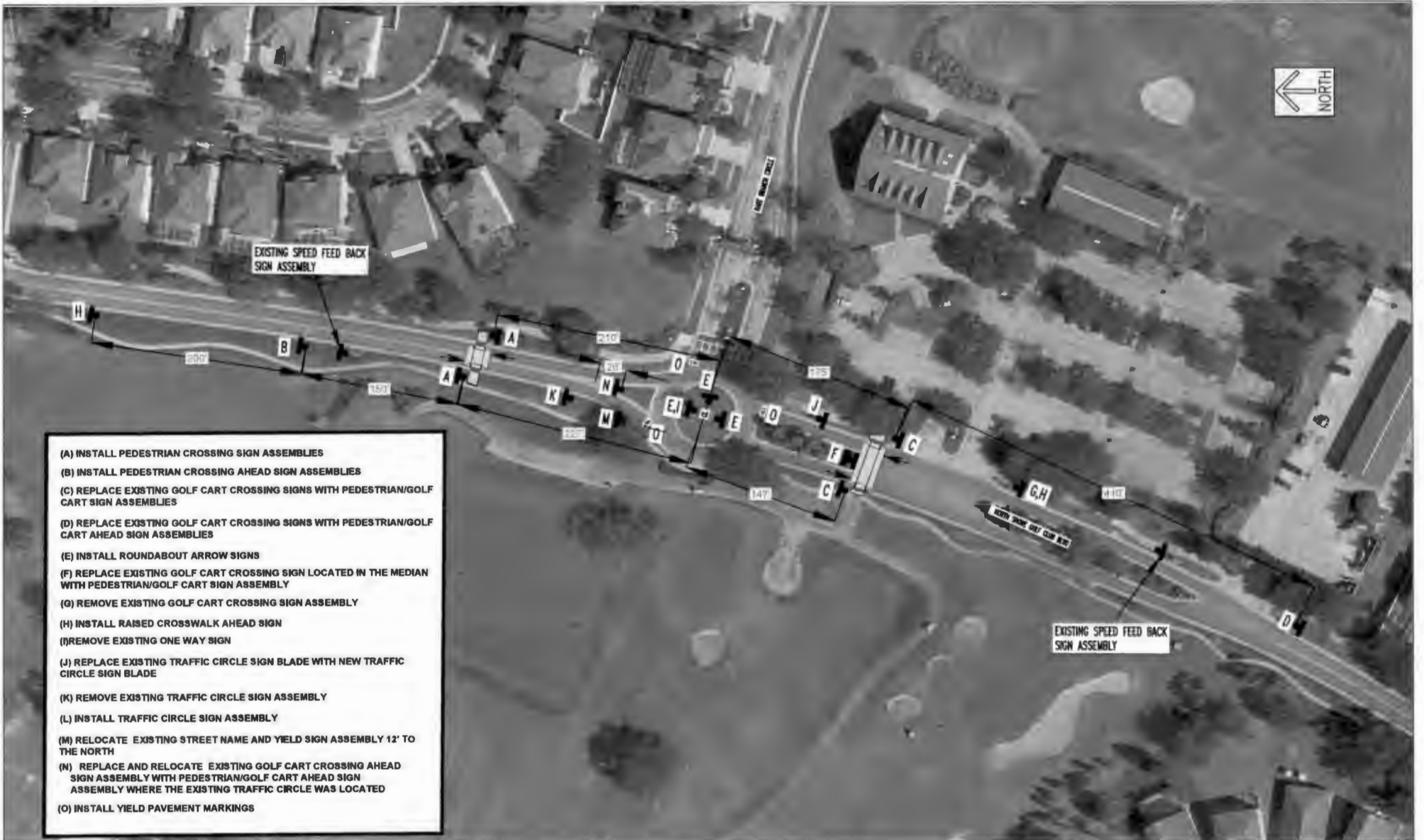
The North Shore at Lake Hart Homeowner's Association requested that the Traffic Engineering Division conduct a study to reduce the speed of vehicles approaching the roundabout at the intersection of North Shore Golf Club Boulevard and Hart Branch Circle. The residents are concerned for pedestrians crossing the street to access the North Shore Golf Course and Moss Park Elementary School, as well as for school children at the bus stop adjacent to the roundabout. The study concluded that the installation of raised crosswalks at both approaches along North Shore Golf Club Boulevard would provide a visual and physical cue to effectively reduce vehicle speeds and provide better pedestrian conspicuity.

North Shore Golf Club Boulevard is functionally classified as an urban minor collector with traffic volumes exceeding the County's traffic volume threshold normally recommended for speed humps and other vertical traffic calming devices. However, since vehicles will need to slow to enter the roundabout safely, staff has determined that the installation of raised crosswalks is justified. Staff recommends approval of the installation of the two raised crosswalks to reduce vehicle speeds and improve safety for pedestrians. The project is being funded through the Traffic Calming Program CIP.

**Action Requested: Approval to install two raised crosswalks on North Shore Golf Club Boulevard. District 4.**

DMA/CNL/HLC

Attachments



- (A) INSTALL PEDESTRIAN CROSSING SIGN ASSEMBLIES
- (B) INSTALL PEDESTRIAN CROSSING AHEAD SIGN ASSEMBLIES
- (C) REPLACE EXISTING GOLF CART CROSSING SIGNS WITH PEDESTRIAN/GOLF CART SIGN ASSEMBLIES
- (D) REPLACE EXISTING GOLF CART CROSSING SIGNS WITH PEDESTRIAN/GOLF CART AHEAD SIGN ASSEMBLIES
- (E) INSTALL ROUNDABOUT ARROW SIGNS
- (F) REPLACE EXISTING GOLF CART CROSSING SIGN LOCATED IN THE MEDIAN WITH PEDESTRIAN/GOLF CART SIGN ASSEMBLY
- (G) REMOVE EXISTING GOLF CART CROSSING SIGN ASSEMBLY
- (H) INSTALL RAISED CROSSWALK AHEAD SIGN
- (I) REMOVE EXISTING ONE WAY SIGN
- (J) REPLACE EXISTING TRAFFIC CIRCLE SIGN BLADE WITH NEW TRAFFIC CIRCLE SIGN BLADE
- (K) REMOVE EXISTING TRAFFIC CIRCLE SIGN ASSEMBLY
- (L) INSTALL TRAFFIC CIRCLE SIGN ASSEMBLY
- (M) RELOCATE EXISTING STREET NAME AND YIELD SIGN ASSEMBLY 12' TO THE NORTH
- (N) REPLACE AND RELOCATE EXISTING GOLF CART CROSSING AHEAD SIGN ASSEMBLY WITH PEDESTRIAN/GOLF CART AHEAD SIGN ASSEMBLY WHERE THE EXISTING TRAFFIC CIRCLE WAS LOCATED
- (O) INSTALL YIELD PAVEMENT MARKINGS

REVISIONS		
DATE	BY	DESCRIPTION

ORANGE COUNTY PUBLIC WORKS  
 TRAFFIC ENGINEERING DIVISION  
 4200 SOUTH JOHN YOUNG PARKWAY  
 ORLANDO, FLORIDA 32839-9200  
 (407) 836-7900

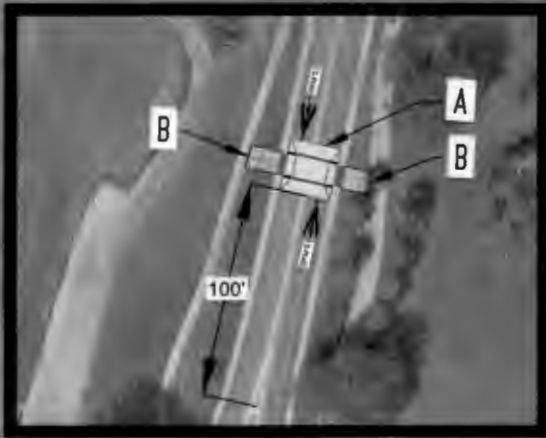


DRAWN BY: Scott Chelton	DATE: 9/5/19
REVISED BY: Lauren Torres	DATE: 9/9/19
APPROVED BY: Humberto Coefflers	DATE: 9/9/19

NORTH SHORE GOLF CLUB BLVD TRAFFIC  
 CIRCLE AT HART BRANCH CIRCLE

DRAWING SCALE: N=25
SHEET 4 OF 4

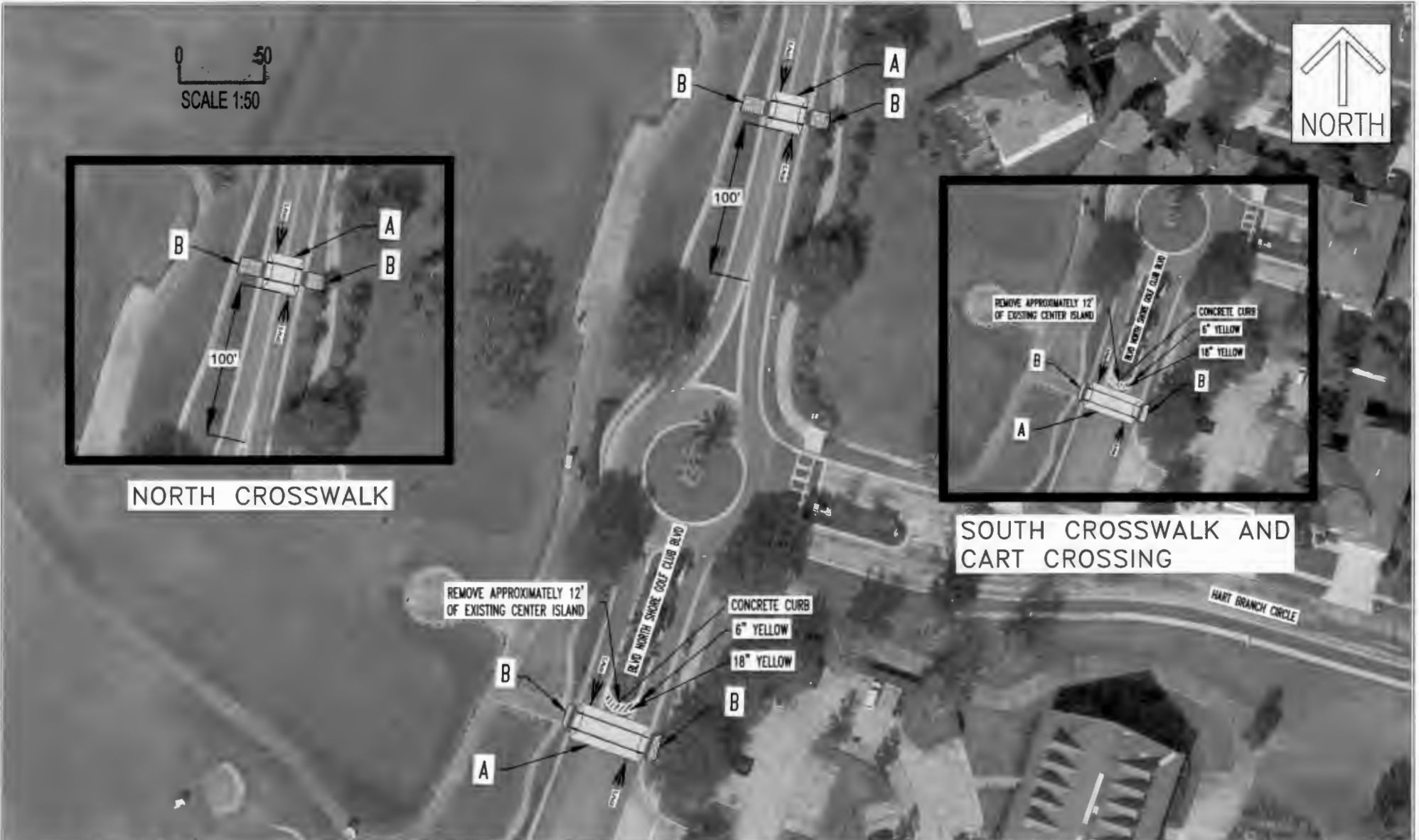
0 50  
SCALE 1:50



NORTH CROSSWALK



SOUTH CROSSWALK AND  
CART CROSSING



REVISIONS		
DATE	BY	DESCRIPTION

ORANGE COUNTY PUBLIC WORKS  
TRAFFIC ENGINEERING DIVISION  
4200 SOUTH JOHN YEMASSEE PARKWAY  
ORLANDO, FLORIDA 32839-6228  
(407) 836-7000



DRAWN BY: Sarah Christian DATE: 9/5/19  
REVIEWED BY: Lauren Torres DATE: 9/5/19  
APPROVED BY: Humberto Cuatrecasas DATE: 9/5/19

NORTH SHORE GOLF CLUB BLVD TRAFFIC  
CIRCLE AT HART BRANCH CIRCLE

DRAWING SCALE:  
1:50  
SHEET 2 OF 3