



***Board of County Commissioners***

**SS-21-03-008**

**Privately-Initiated Map Amendment**

***Adoption Public Hearing***

**Agenda VI.D.8**

**April 27, 2021**



## **SS-21-03-008 – Steven Thorp, OCPS Privately-Initiated Map Amendment**

**Applicant:** Steven Thorp, Orange County Public Schools

**Future Land Use Map (FLUM) Request:**

**From:** LDR (Low-Medium Density Residential)

**To:** MDR (Medium Density Residential)

**Location:** 1408 S. Central Avenue; Generally located on the west side of S. Central Avenue, north of W. 18th Street, south of W. 17th Street

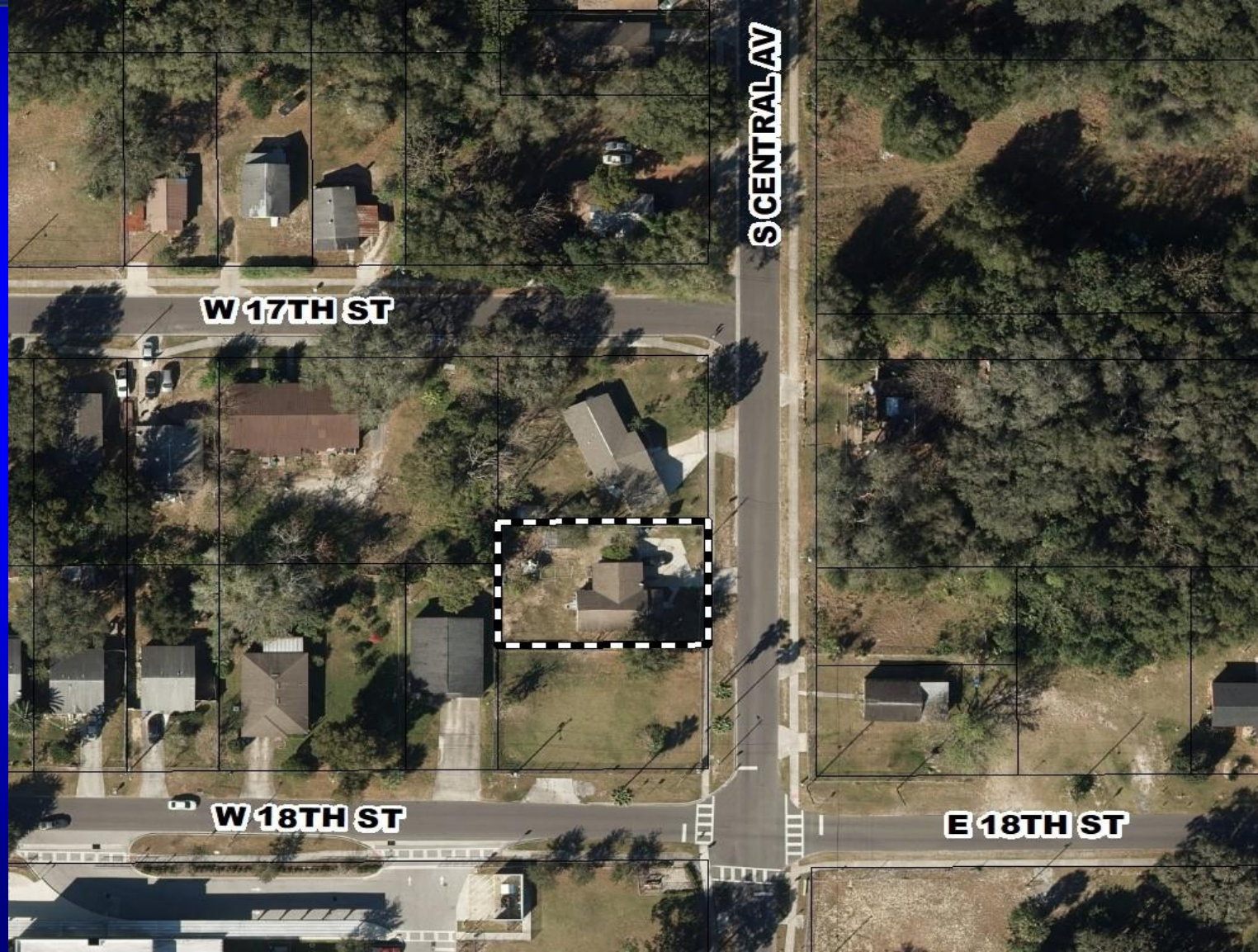
**Acreage:** 0.218 gross acres

**District:** 2

**Proposed Use:** Wheatley Adult Education Center Expansion (subject to Special Exception approval)



**SS-21-03-008 – Steven Thorp, OCPS**  
**Privately-Initiated Map Amendment**  
**Aerial Map**

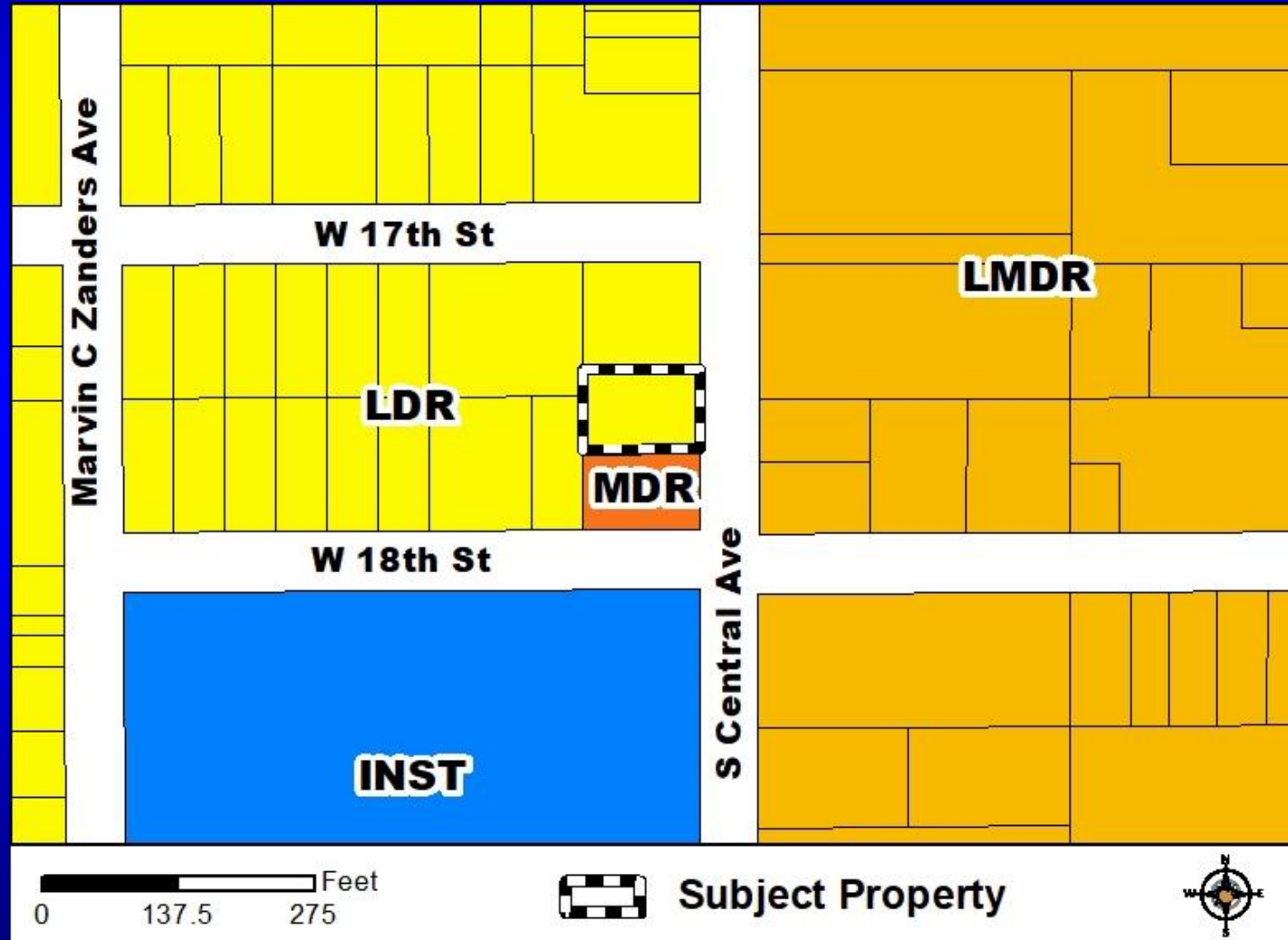




# SS-21-03-008 – Steven Thorp, OCPS

## Privately-Initiated Map Amendment

### Future Land Use Map

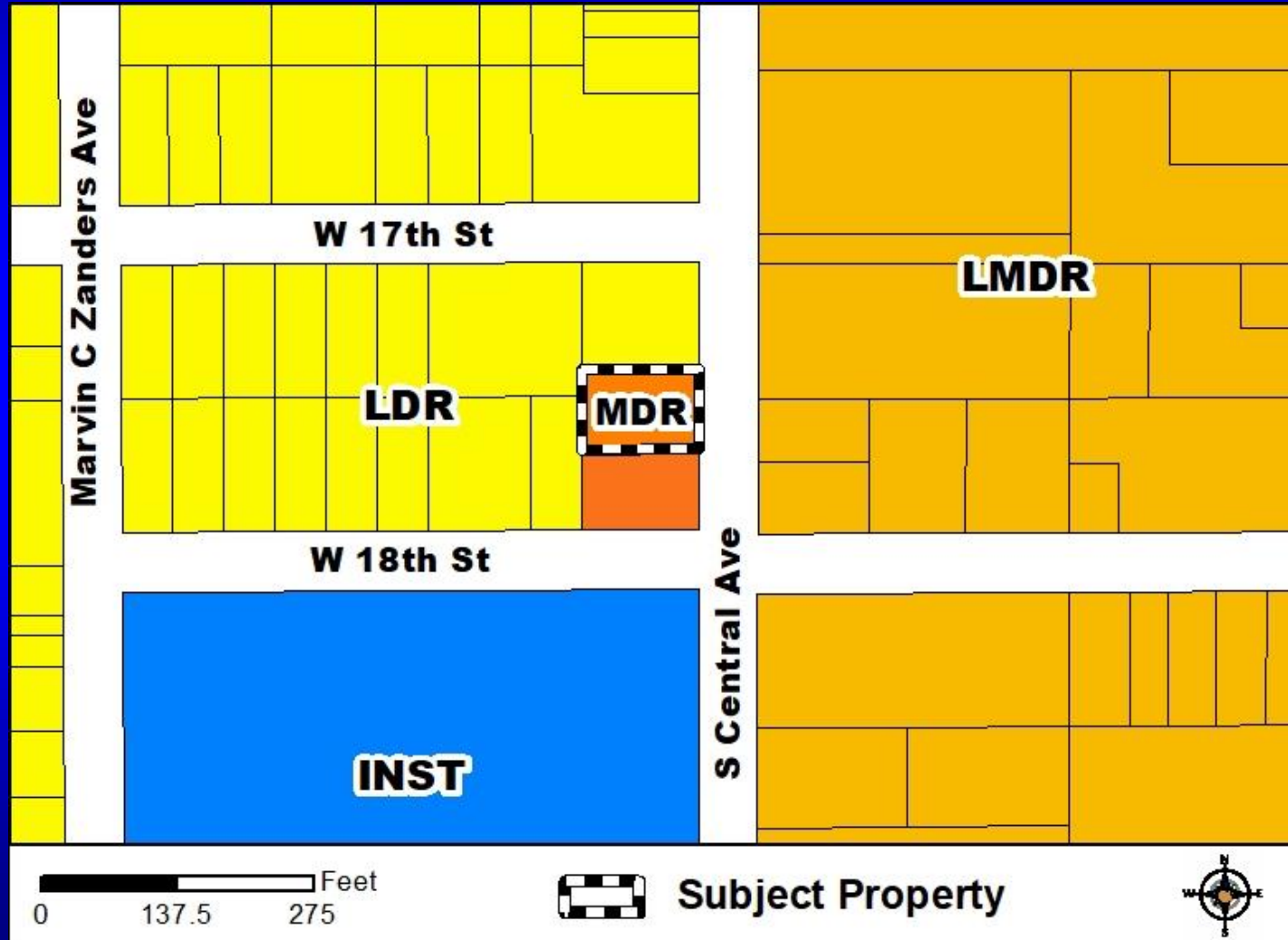




# SS-21-03-008 – Steven Thorp, OCPS

## Privately-Initiated Map Amendment

### Proposed Future Land Use Map

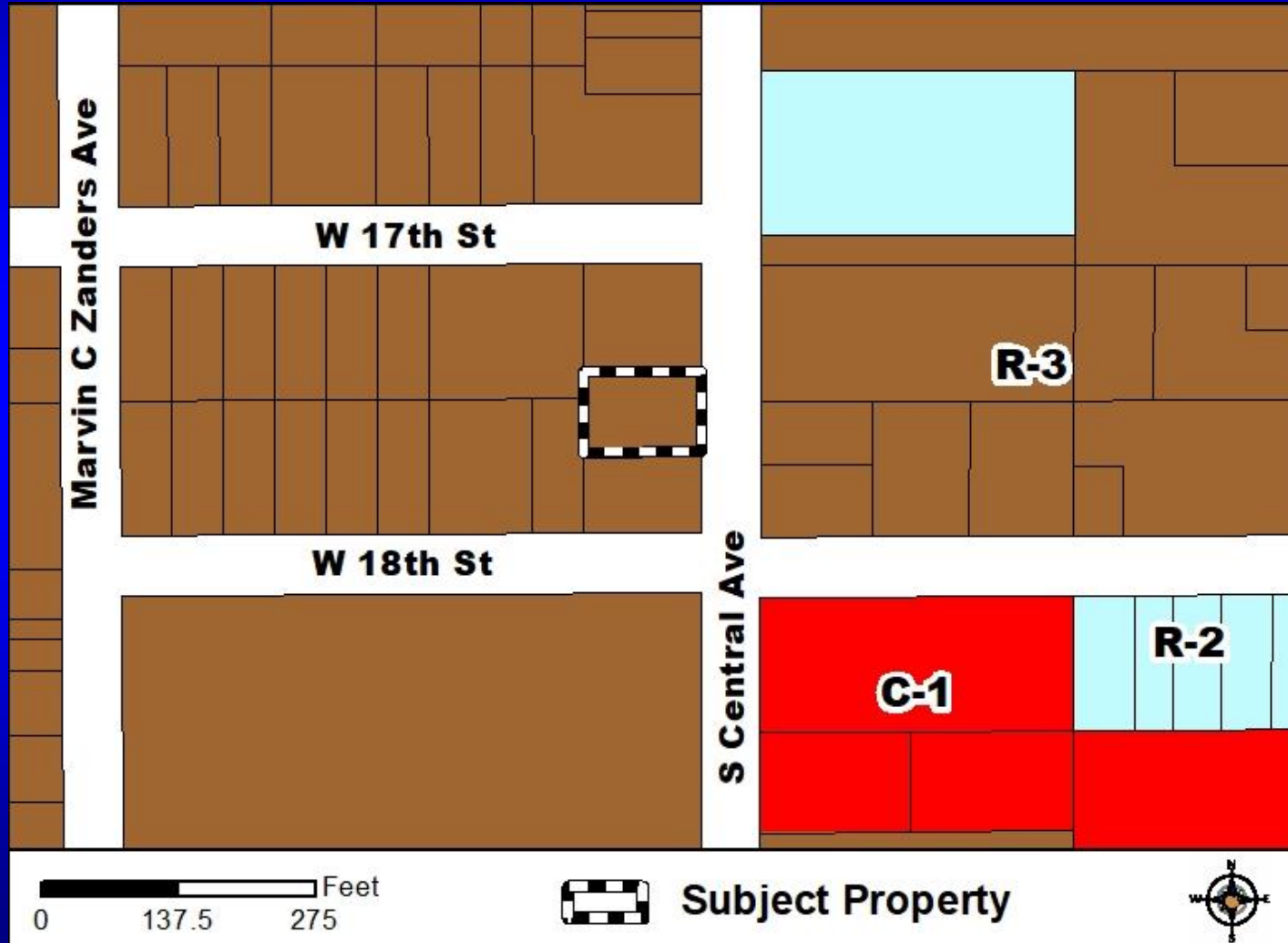




# SS-21-03-008 – Steven Thorp, OCPS

## Privately-Initiated Map Amendment

### Zoning Map





# Action Requested

**SS-21-03-008:**

**Ordinance:**

**ADOPTION**

**APPROVAL**

## **Recommended Action:**

- **Make a finding of consistency with the Comprehensive Plan and recommend ADOPTION of the Medium Density Residential (MDR) Future Land Use; and**
- **Recommend APPROVAL of the associated Small-Scale Ordinance**