



# High Point PD

## Change Determination Request

### CDR-24-08-201

BoCC Presentation

January 7<sup>th</sup>, 2025



# INTRODUCTIONS

## ▶ **OWNER/APPLICANT**

- ▶ **AEA Waterford Lakes, LLC (Contact: Marcello Spinelli)**

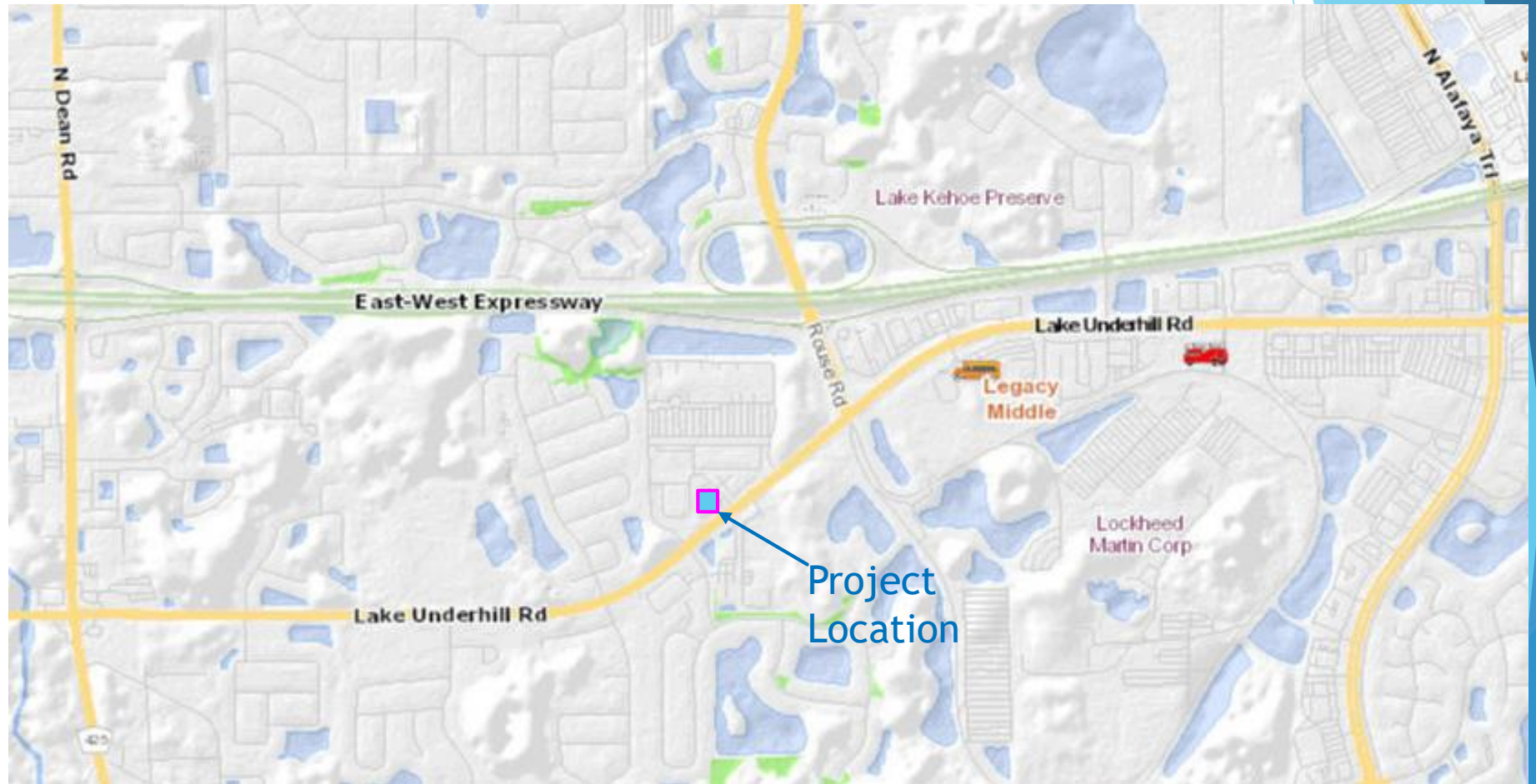
## ▶ **Civil Engineer**

- ▶ **R-Squared Engineering, LLC (Contact: Ryan A. Renardo, P.E.)**

## ▶ **Traffic Engineer**

- ▶ **Raysor Transportation Consulting, LLC (Contact: Michael D. Raysor, P.E.)**

# PROJECT LOCATION



# EXISTING SITE CONDITIONS

## ► Existing Parking

- 41 Spaces Front (South)
- 19 Spaces Rear (North)



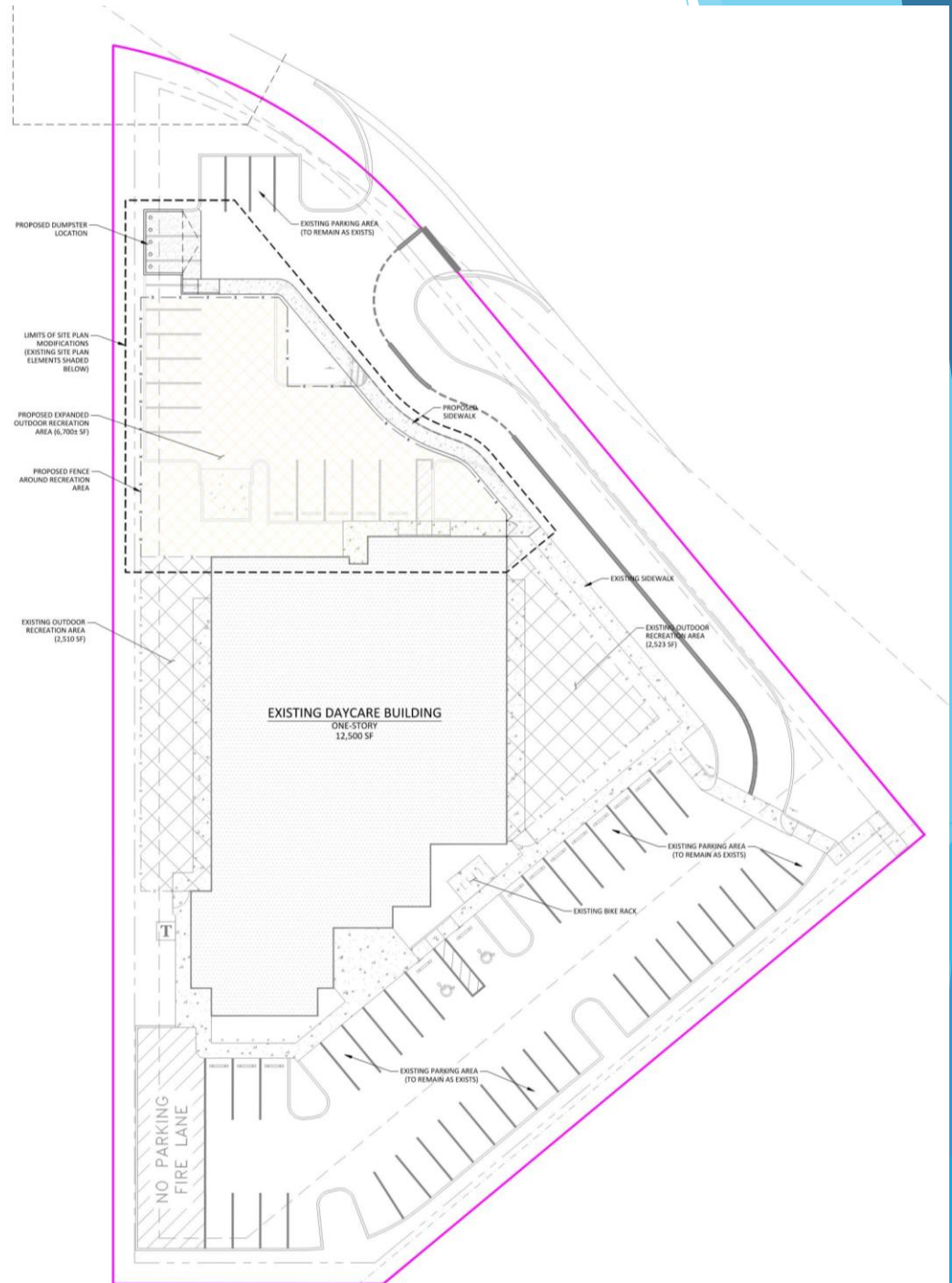
# CDR SCOPE

- ▶ Reduce the minimum parking requirement to allow expansion of the outdoor recreation area.
- ▶ Current Minimum Parking Requirement:
  - ▶ 1 space for each 10 children, plus with a pickup and drop-off area
  - ▶ one space for each 10 children or without a pick-up or drop-off area
  - ▶ one space for each 5 children
- ▶ Proposed Minimum Parking Requirement:
  - ▶ 1 space for each 5 children
  - ▶ Specific to Outparcel 2C Only

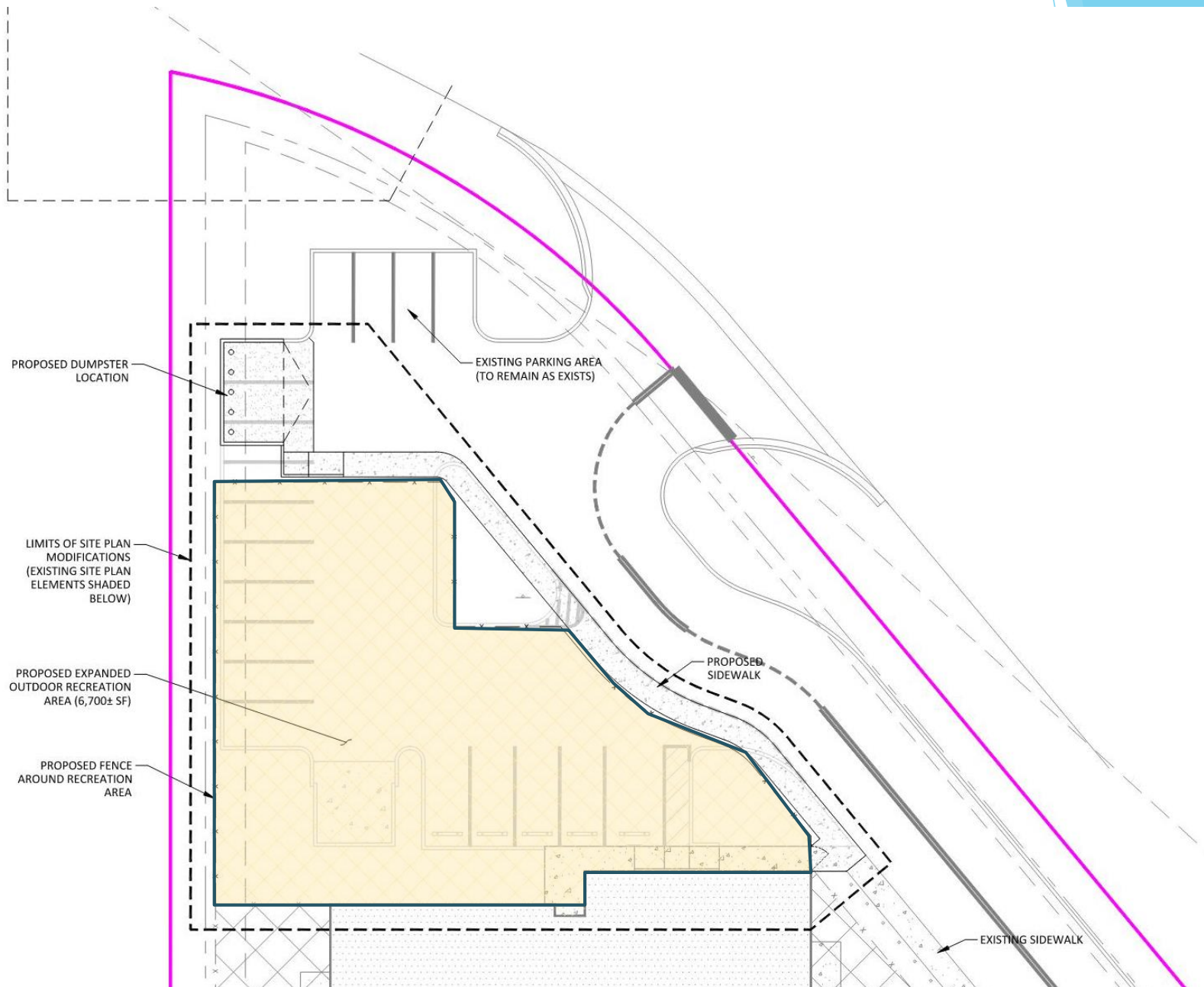


# PROPOSED SITE CONDITIONS

- ▶ **Proposed Parking**
  - ▶ **41 Spaces Front (South)**
  - ▶ **4 Spaces Rear (North)**



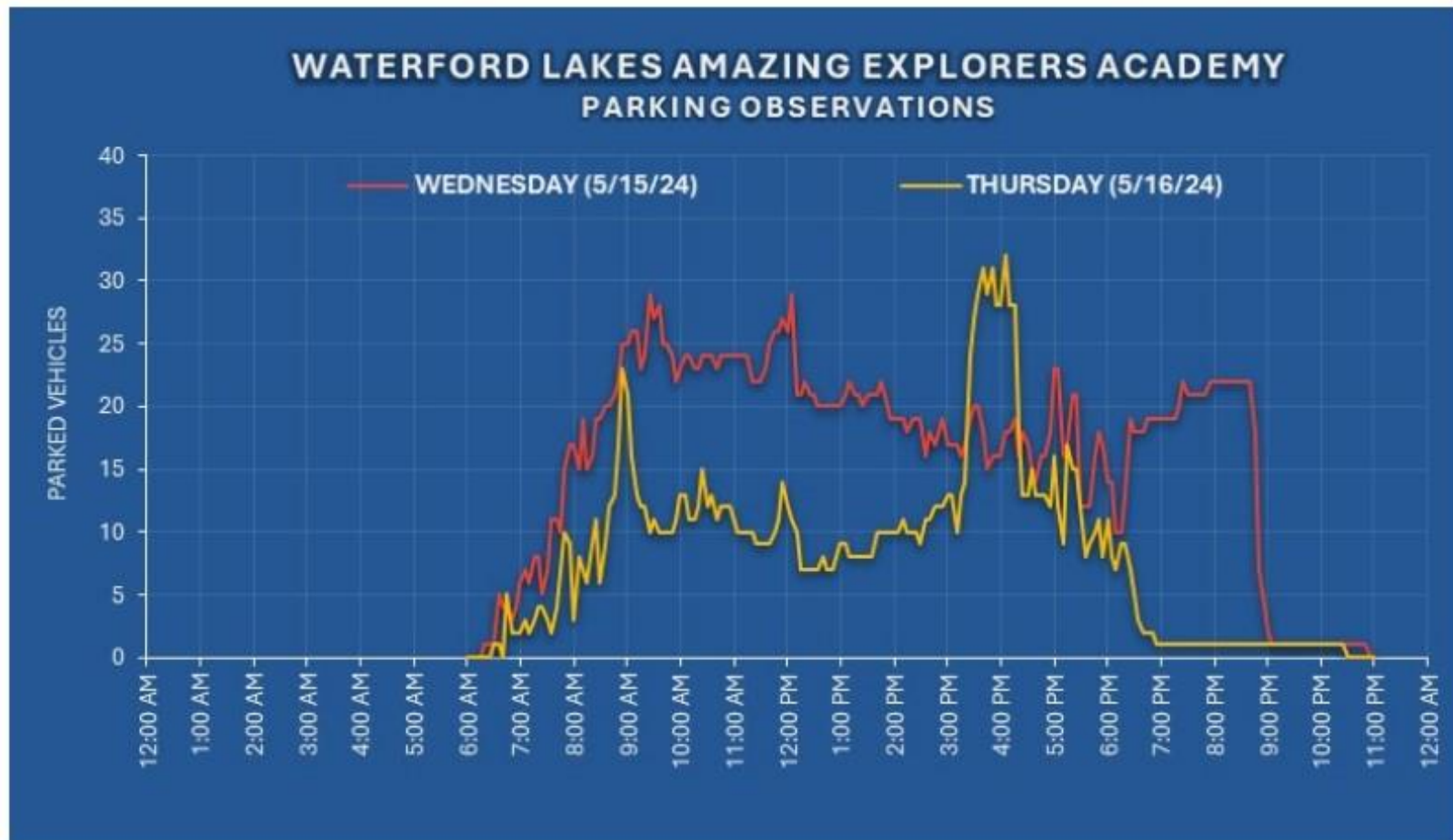
# PROPOSED SITE CONDITIONS



# PARKING STUDY

- ▶ **Parking Observations for 2 Full Days**
  - ▶ Peak Parking Demand: 32 spaces
- ▶ **Parking Study Supports the CDR Request.**

**FIGURE 3.0 | PARKING DEMAND BY TIME OF DAY**





THANK YOU

The background of the slide is a light gray. On the right side, there is a large, abstract graphic composed of several overlapping, semi-transparent blue triangles and polygons. These shapes are in various shades of blue, ranging from a very light, almost white blue to a deep, dark navy blue. The overall effect is a modern, geometric design that frames the right side of the text.