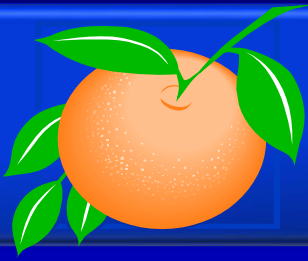


Board of County Commissioners

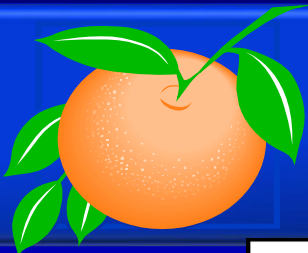
Public Hearings

July 1, 2025



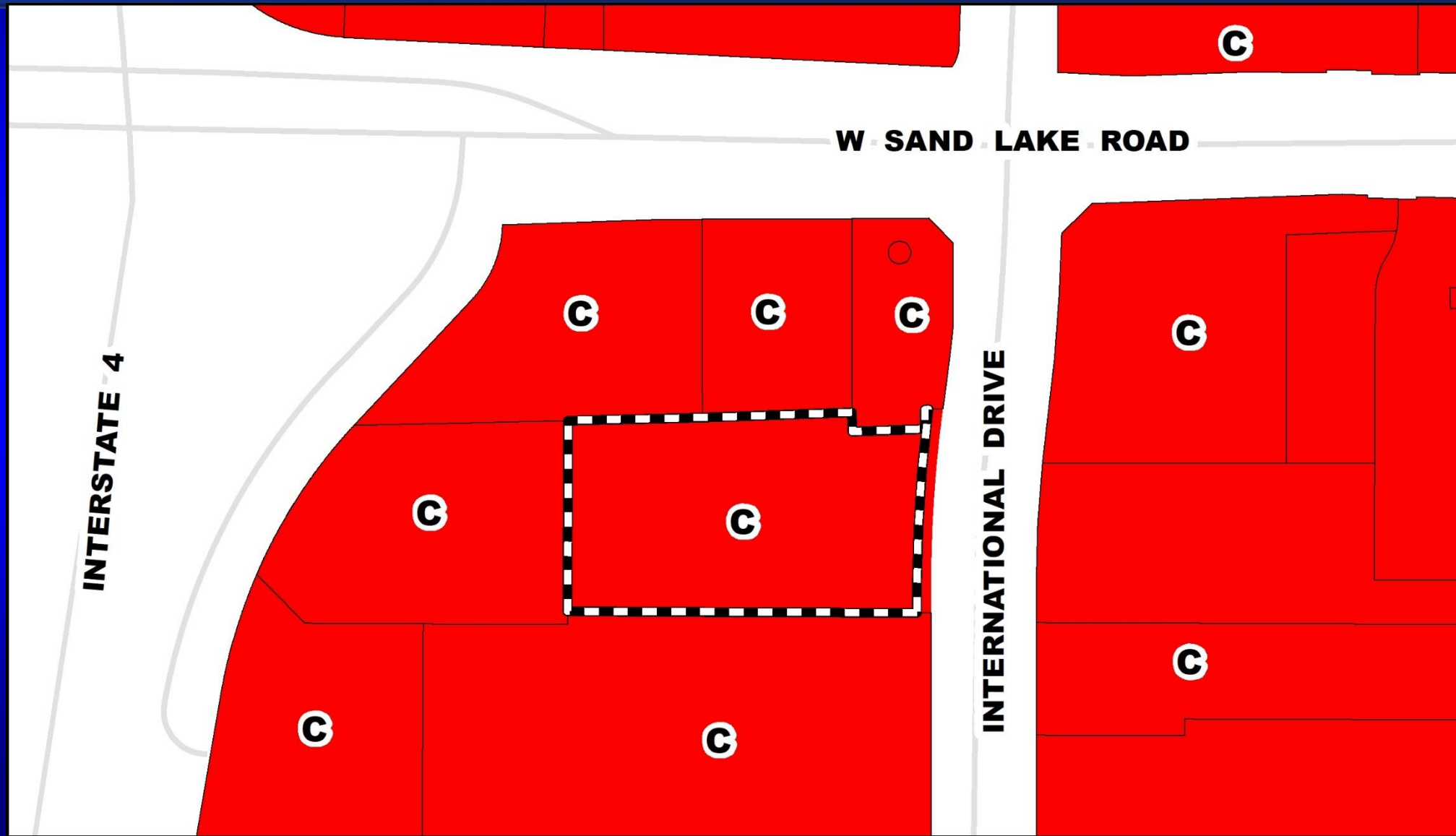
Hollywood Plaza Parking Garage Planned Development (PD)

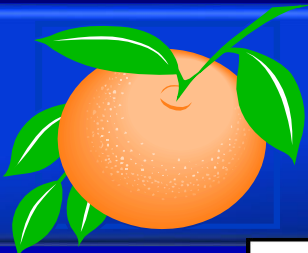
Case:	CDR-24-03-064
Applicant:	James Cheek, III, Winderweedle Haines Ward & Woodman, P.A.
District:	6
Acreage:	1.56 acres (overall PD)
Location:	8050 International Drive; West of International Drive / South of Sand Lake Road
Request:	To request new entitlements for 16,280 square feet of event space in conjunction with a restaurant.



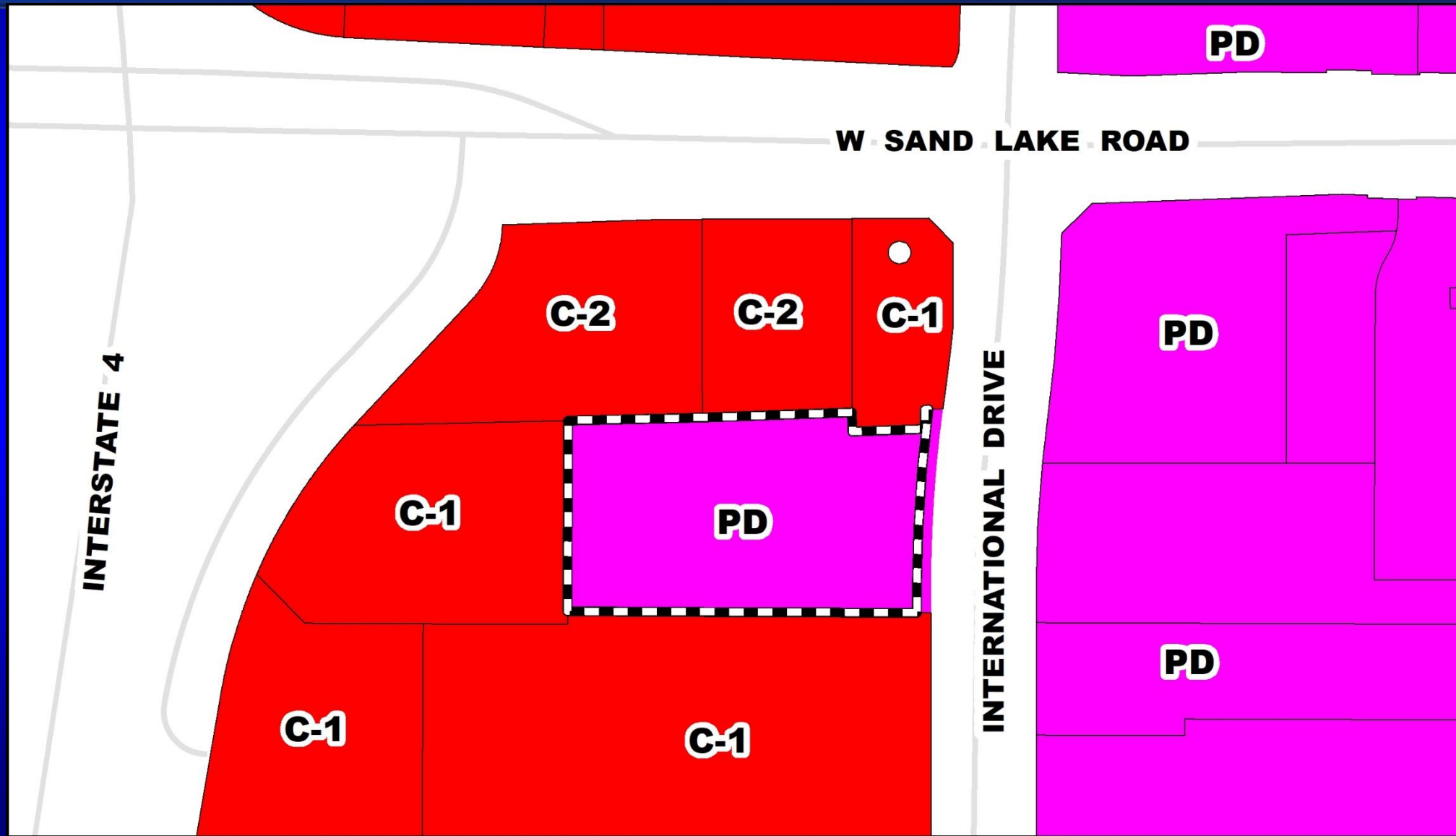
Hollywood Plaza Parking Garage Planned Development (PD)

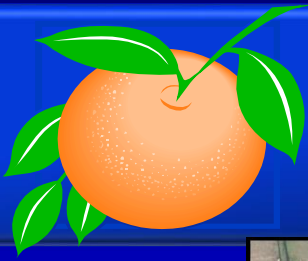
Future Land Use Map





Hollywood Plaza Parking Garage Planned Development (PD) Zoning Map

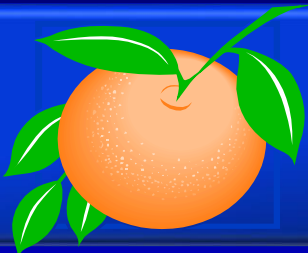




Hollywood Plaza Parking Garage Planned Development (PD)

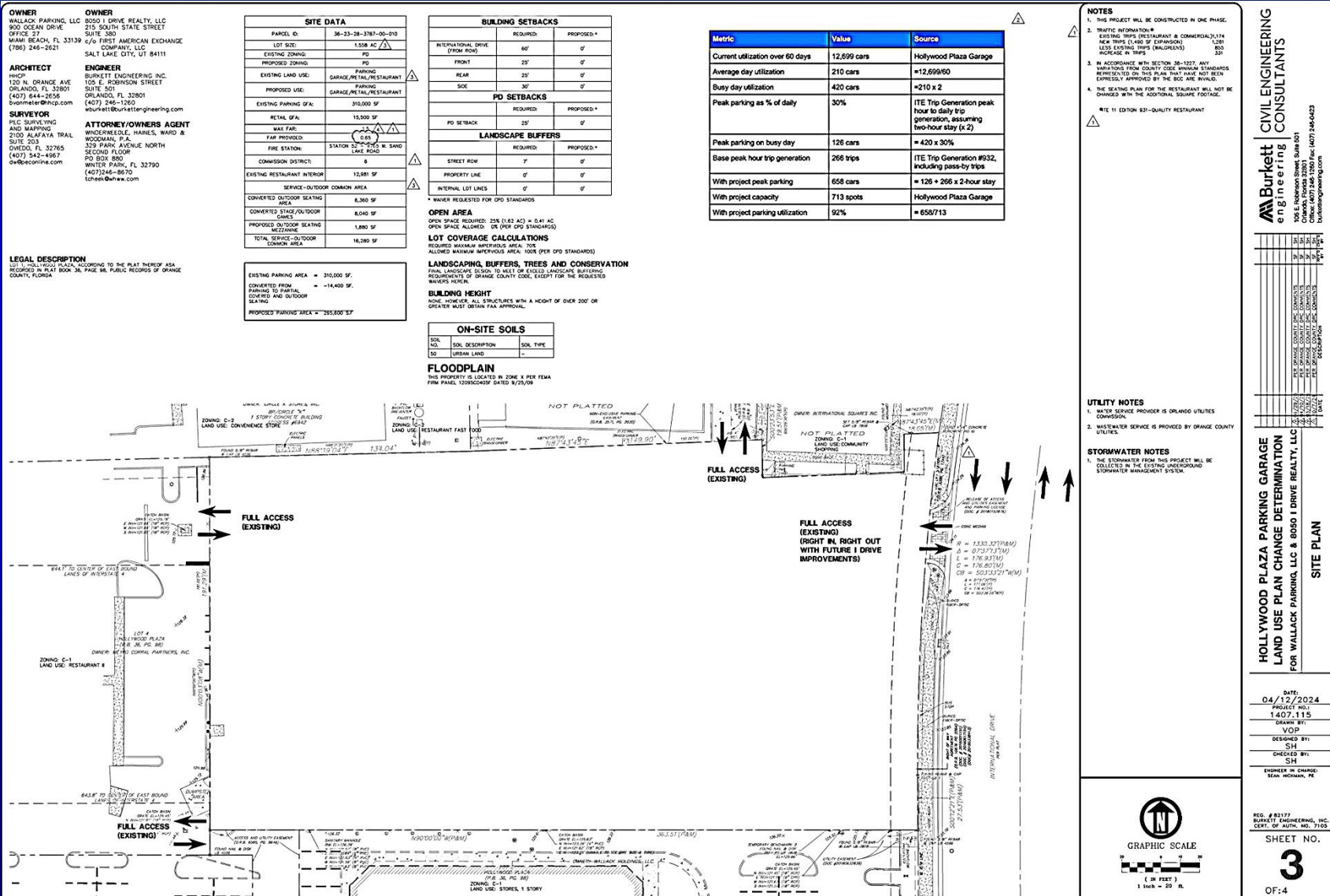
Aerial Map





Hollywood Plaza Parking Garage Planned Development (PD)

Overall Land Use Plan



BURKETT ENGINEERING
CONSULTANTS
10000 Lake Nona Blvd, Suite 101
Orlando, Florida 32817
Phone: (407) 246-1260 Fax: (407) 246-6423
info@burkettengineering.com

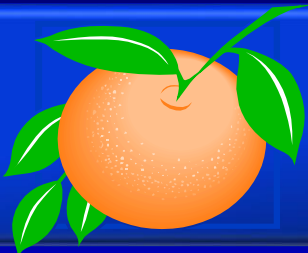
**HOLLYWOOD PLAZA PARKING GARAGE
LAND USE PLAN CHANGE DETERMINATION
FOR WALLACK PARKING, LLC & 8050 I DRIVE REALTY, LLC**

SITE PLAN

DATE: 04/12/2024
PROJECT NO.: 1407.115
DRAWN BY: VOP
DESIGNED BY: SH
CHECKED BY: SH
ENGINEER IN CHARGE: SEAN MICHAEL, PE

REG. # 82177
COMMUNITY ENGINEERING, INC.
CERT. OF AUTH. NO. 7103

SHEET NO.
3
OF 4



Action Requested

Make a finding of consistency with the Comprehensive Plan and APPROVE an amendment to the Planned Development (CDR-24-03-064) “Received May 1, 2025”, subject to the conditions listed under the Development Review Committee (DRC) Recommendation in the Staff Report. District 6..

District 6

Board of County Commissioners

Public Hearings

July 1, 2025