




Interoffice Memorandum

November 8, 2019

TO: Mayor Jerry L. Demings
and Board of County Commissioners

FROM: Diana M. Almodovar, P.E., Interim, Director, Public Works Department 

CONTACT PERSON: **Christine N. Lofye, P. E., Manager** 
Traffic Engineering Division

PHONE NUMBER: (407) 836-7891

SUBJ: **Installation of Traffic Control Devices in Waterleigh Phases 3B, 3C,
3D**

Our staff recommends that the following traffic control devices be installed in Waterleigh Phases 3B, 3C, 3D:

Install "STOP" signs on:

- Admirals Cove Lane at Bolero Road
- Sea Glass Street at Wading Walk Lane
- Wading Walk Lane at Admirals Cove Lane
- Sonoma Coast Drive at Mangrove Road
- Bolero Road at Mangrove Road
- Sea Glass Street at Bolero Road
- Fountain Springs Road at Sonoma Coast Drive
- Moonlight Bay Street at Sonoma Coast Drive
- Pelican Cay Drive at Sonoma Coast Drive
- Compass Rose Street at Sonoma Coast Drive
- Lost Creek Drive at Sonoma Coast Drive
- Mango Isle Street at Sonoma Coast Drive
- Mango Isle Street at Lost Creek Drive
- Compass Rose Street at Lost Creek Drive
- Shore Walk Drive at Sonoma Coast Drive
- Shore Walk Drive at Lost Creek Drive
- Pelican Cay Drive at Lost Creek Drive
- Fountain Springs Road at Lost Creek Drive
- Moonlight Bay Street at Lost Creek Drive
- Wading Walk Lane at Mangrove Road
- Mellow Coral Street at Mangrove Road
- Angel Fish Road at Mellow Coral Street
- Mellow Coral Street at Admirals Cove Lane
- Angel Fish Road at Jaywood Road
- Admirals Cove Lane (EB) at Jaywood Road
- Jaywood Road at Mangrove Road
- Mangrove Road at Lost Creek Drive

November 8, 2019

SUBJ: **Installation of Traffic Control Devices in Waterleigh Phases 3B, 3C,
3D**

Page 2

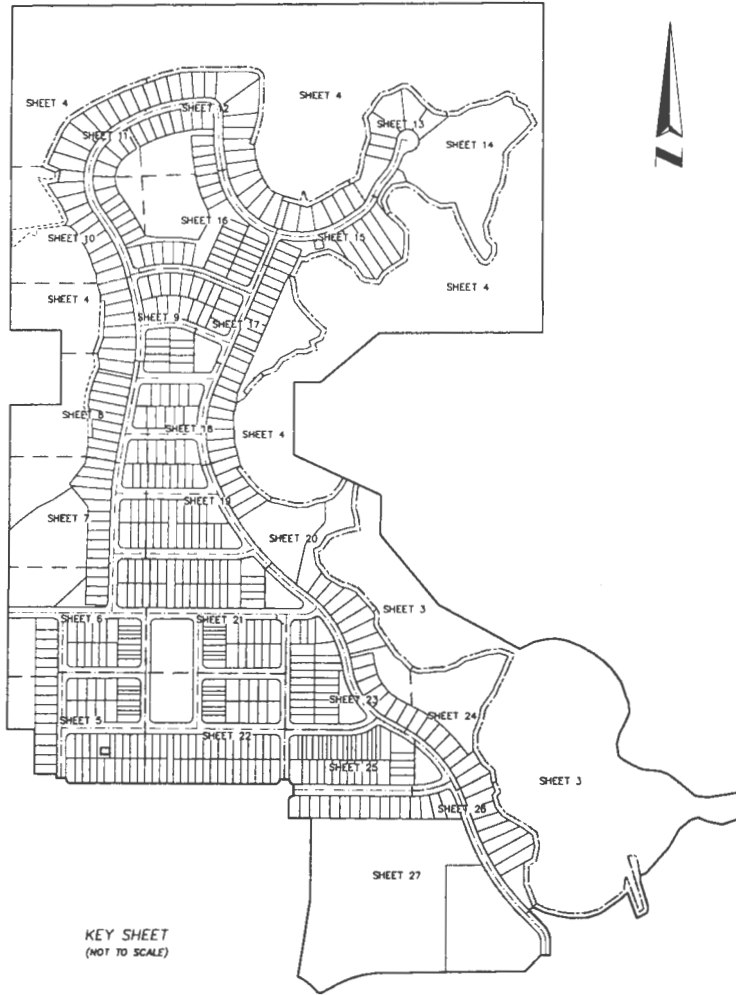
Admirals Cove Lane (WB) at Jaywood Road
Admirals Cove Lane at Lost Creek Drive
Jaywood Road (NB) at Oakboro Street
Oakboro Street at Lost Creek Drive
Lost Creek Drive at Atwater Bay Drive

**Action Requested: Approval of Traffic Control Devices in Waterleigh Phases 3B, 3C,
3D. District 1.**

DMA/CNL/AHW

Attachments

WATERLEIGH PHASES 3B, 3C, AND 3D
 A PORTION OF SECTIONS 6 AND 7, TOWNSHIP 24 SOUTH, RANGE 27 EAST,
 ORANGE COUNTY, FLORIDA



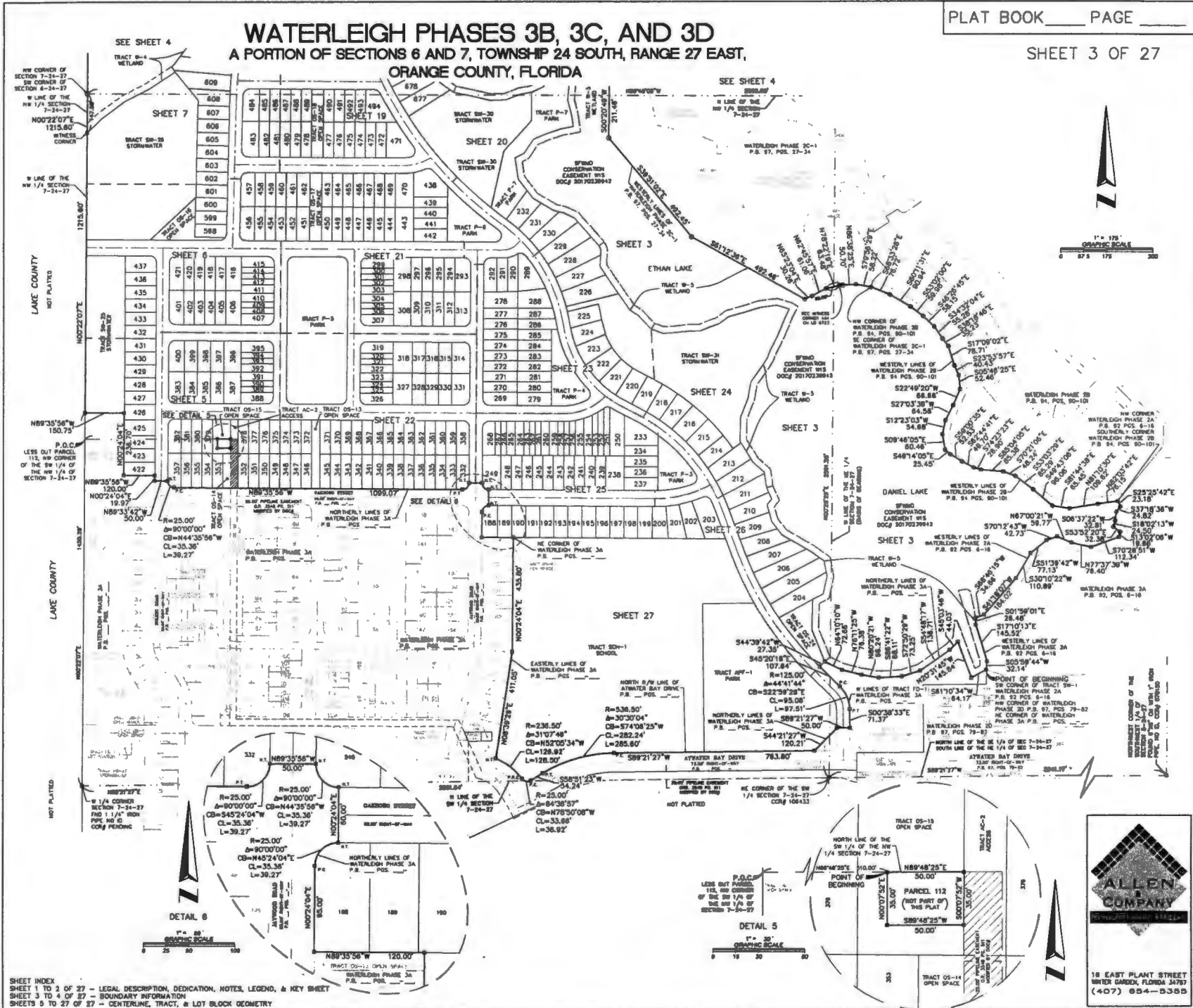
SURVEYOR'S NOTES:

1. BEARINGS SHOWN HEREON ARE ASSUMED AND BASED ON THE BEST LINE OF THE NORTHEAST 1/4 OF SECTION 7-24-27 AS BEING AN ASSUMED BEARING OF NORTH 00°28'29" EAST FOR ANGULAR DESIGNATION ONLY.
2. ALL LOT LINES INTERSECTING CURVES ARE RADIAL, UNLESS OTHERWISE NOTED NON-RADIAL (N.R.).
3. ALL PLATTED UTILITY EASEMENTS SHALL ALSO BE EASEMENTS FOR THE CONSTRUCTION, INSTALLATION, MAINTENANCE, AND OPERATION OF CABLE TELEVISION AND DATA SERVICES; PROVIDED, HOWEVER, NO SUCH CONSTRUCTION, INSTALLATION, MAINTENANCE, AND OPERATION OF CABLE TELEVISION SERVICES SHALL INTERFERE WITH THE FACILITIES AND SERVICES OF AN ELECTRIC, TELEPHONE, GAS, OR OTHER PUBLIC UTILITY. IN THE EVENT A CABLE TELEVISION COMPANY DAMAGES THE FACILITIES OF A PUBLIC UTILITY, IT SHALL BE SOLELY RESPONSIBLE FOR THE DAMAGES. THIS SECTION SHALL NOT APPLY TO THOSE PRIVATE EASEMENTS GRANTED TO OR OBTAINED BY A PARTICULAR ELECTRIC, TELEPHONE, GAS, OR OTHER PUBLIC UTILITY. SUCH CONSTRUCTION, INSTALLATION, MAINTENANCE, AND OPERATION SHALL COMPLY WITH THE NATIONAL ELECTRICAL SAFETY CODE AS ADOPTED BY THE FLORIDA PUBLIC SERVICE COMMISSION.
4. THE LANDS SHOWN HEREON ARE SUBJECT TO THAT CERTAIN DECLARATION OF COVENANTS, EASEMENTS AND RESTRICTIONS FOR THE WATERLEIGH MASTER COMMUNITY ASSOCIATION, INC. (THE MASTER ASSOCIATION) FORMED PURSUANT TO THAT CERTAIN MASTER DECLARATION OF COVENANTS, CONDITIONS, EASEMENTS AND RESTRICTIONS FOR WATERLEIGH DEVELOPMENT RECORDED IN OFFICIAL RECORDS BOOK 10831, PAGE 4228 OF THE PUBLIC RECORDS OF ORANGE COUNTY, FLORIDA, AND ANY SUPPLEMENT AND/OR AMENDMENTS THERETO.
5. THE PRIVATE ACCESS AND DRAINAGE EASEMENTS (P.A.D.E.) AS DEPICTED ARE RESERVED FOR THE EXCLUSIVE USE AND BENEFIT OF THE FOLLOWING ENTITIES AND FOR THE FOLLOWING PURPOSES: (I) THE WATERLEIGH PHASE 3 SINGLE FAMILY RESIDENT COMMUNITY ASSOCIATION, INC. A FLORIDA NOT FOR PROFIT CORPORATION (THE "SFR ASSOCIATION") AND THE WATERLEIGH PHASE 3 TOWN HOME COMMUNITY ASSOCIATION, INC. (THE "TH ASSOCIATION"), FOR THE PURPOSE OF EXERCISING ALL POWERS AND RESPONSIBILITIES DELEGATED TO SUCH ASSOCIATION PURSUANT TO THE MASTER ASSOCIATION; (II) THE OWNERS OF THE LOTS WITHIN THE PROPERTY FOR PURPOSES OF ACCESS TO AND FROM PUBLIC STREETS AND LOTS LYING ADJACENT TO SUCH PRIVATE ACCESS AND DRAINAGE EASEMENTS; AND (III) ORANGE COUNTY AND ITS EMPLOYEES AND AGENTS SOLELY FOR THE PURPOSE OF PERFORMING MUNICIPAL AND GOVERNMENT FUNCTIONS REASONABLY NECESSARY TO PROVIDE FOR AND PROTECT THE HEALTH, SAFETY AND WELFARE OF THE PROPERTY AND OWNERS THEREOF OR RESIDENTS THEREON, AS WELL AS SUCH OWNER'S GUESTS AND INVITEES, INCLUDING BUT NOT LIMITED TO, POLICE, FIRE AND EMERGENCY MEDICAL SERVICES. ALL PRIVATE ACCESS AND DRAINAGE EASEMENTS AND ACCESS IMPROVEMENTS AND APPURTENANCES AND RELATED FACILITIES CONSTRUCTED THEREIN ARE DEDICATED TO AND MAINTAINED BY THE SFR ASSOCIATION AND TH ASSOCIATION AS LIMITED COMMON AREA.
6. TRACTS OS-13, OS-14, OS-15, OS-16, OS-17, OS-18, OS-19, OS-20, OS-21, OS-22, OS-23, OS-24, OS-25, AND OS-26 ARE OPEN SPACE TRACTS. SAID TRACTS SHALL BE OWNED AND MAINTAINED BY THE WATERLEIGH PHASE 3 SFR COMMUNITY ASSOCIATION, INC. (THE SFR ASSOCIATION).
7. TRACTS P-1, P-4, P-5, P-6, P-7, AND P-8 ARE PARK TRACTS. SAID TRACTS SHALL BE OWNED AND MAINTAINED BY THE SFR ASSOCIATION.
8. TRACTS W-4, W-5, AND UPLAND BUFFERS THEREIN, ARE A WETLAND TRACT AND SHALL BE OWNED BY THE MASTER ASSOCIATION. DEVELOPMENT RIGHTS TO TRACTS W-4, W-5, AND UPLAND BUFFERS ARE HEREBY DEDICATED TO ORANGE COUNTY, FLORIDA. NO CONSTRUCTION, CLEARING, GRADING OR ALTERATION TO TRACT W-4, W-5, AND UPLAND BUFFERS IS PERMITTED WITHOUT PRIOR APPROVAL OF ORANGE COUNTY, FLORIDA AND/OR ALL OTHER APPLICABLE JURISDICTIONAL AGENCIES. THE CONSERVATION SHOWN HEREON IS ACCORDING TO THE CONSERVATION AREA DETERMINATION (CAD) (08-041), AS APPROVED BY THE ORANGE COUNTY ENVIRONMENTAL PROTECTION DEPARTMENT ON FEBRUARY 7, 2017. DEVELOPMENT RIGHTS TO THE CONSERVATION AREAS ARE HEREBY DEDICATED TO ORANGE COUNTY, FLORIDA. NO CONSTRUCTION, CLEARING, GRADING OR ALTERATION TO THE CONSERVATION AREAS IS PERMITTED WITHOUT PRIOR APPROVAL OF ORANGE COUNTY, FLORIDA AND/OR ALL OTHER APPLICABLE JURISDICTIONAL AGENCIES.
9. RECORDING OF THIS PLAT DOES NOT CONSTITUTE APPROVAL OF A PERMIT FOR THE CONSTRUCTION OF A BOAT DOCK, BOARDWALK, OBSERVATION PIER, FISHING PIER, COMMUNITY PIER, OR OTHER SIMILAR PERMANENTLY FIXED OR FLOATING STRUCTURES. ANY PERSON DESIRING TO CONSTRUCT ANY OF THESE STRUCTURES SHALL APPLY FOR AN ORANGE COUNTY DOCK CONSTRUCTION PERMIT. APPLICATION SHALL BE MADE TO THE ORANGE COUNTY ENVIRONMENTAL PROTECTION DIVISION AS SPECIFIED IN ORANGE COUNTY CODE CHAPTER 15 ENVIRONMENTAL CONTROL, ARTICLE IX DOCK CONSTRUCTION PRIOR TO INSTALLATION.
10. A UTILITY EASEMENT IS HEREBY DEDICATED OVER THE ENTIRETY OF TRACTS OS-13 AND OS-14 FOR THE PERPETUAL USE OF THE PUBLIC.
11. THE PRIVATE DRAINAGE EASEMENTS (P.D.E.) AND WALL EASEMENTS (W.E.) SHOWN HEREON SHALL BE DEDICATED AND MAINTAINED AS DEFINED BY THE DECLARATION.
12. THE ENVIRONMENTAL SWALE EASEMENT (E.S.E.) SHOWN HEREON IS HEREBY DEDICATED TO THE SFR ASSOCIATION. NO CONSTRUCTION, CLEARING, GRADING, OR ALTERATION BY THE HOMEOWNERS IS PERMITTED WITHOUT PRIOR APPROVAL OF ORANGE COUNTY, FLORIDA AND/OR ALL OTHER APPLICABLE JURISDICTIONAL AGENCIES. MAINTENANCE RESPONSIBILITIES ARE HEREBY ASSIGNED TO THE PROPERTY OWNER.
13. MOTORIZED BOATS, JET SKIS, OR OTHER MOTORIZED WATERCRAFT (OF ANY KIND) ARE PROHIBITED WITHIN THE WETLAND/SURFACE WATERS OF WATERLEIGH PHASE 3.
14. THERE IS AN EASEMENT RESERVED FOR THE BENEFIT OF THE FOLLOWING LOTS OVER THE FOLLOWING TRACTS FOR MAINTENANCE OF THE INDIVIDUAL WATER SERVICES: LOTS 559 THROUGH 565, INCLUSIVE, OVER TRACT OS-20 (OPEN SPACE); LOTS 524 THROUGH 527, INCLUSIVE, OVER TRACT P-8 (PARK); LOTS 438 THROUGH 441, INCLUSIVE, OVER TRACT P-6 (PARK); LOTS 278 THROUGH 285, INCLUSIVE, OVER TRACT P-4 (PARK); LOTS 234 THROUGH 237, INCLUSIVE, OVER TRACT P-3 (PARK).
15. AN ACCESS EASEMENT IS HEREBY DEDICATED OVER THE ENTIRETY OF TRACT OS-25 FOR THE PERPETUAL USE OF THE PUBLIC.
16. TRACT SDH-1 IS A SCHOOL TRACT AND SHALL BE OWNED AND MAINTAINED BY OR HORTON, INC., THEIR SUCCESSORS, AND ASSIGNS.
17. TRACT APF-1 IS AN APF PARK TRACT AND SHALL BE OWNED AND MAINTAINED BY OR HORTON, INC., THEIR SUCCESSORS, AND ASSIGNS.
18. THE NORMAL HIGH WATER ELEVATION FOR HICKORY NUT LAKE IS ELEVATION 100.57 FEET (NAVD 88) BASED ON ORANGE COUNTY STORMWATER MANAGEMENT LAKE FACT SHEET FOR HICKORY NUT LAKE. NEITHER THE NORMAL HIGH WATER ELEVATION, NOR THE ORDINARY HIGH WATER ELEVATION HAS BEEN DETERMINED BY ORANGE COUNTY AT THIS TIME FOR LAKES DANIEL, ETHAN, OR SCOTT.



WATERLEIGH PHASES 3B, 3C, AND 3D

A PORTION OF SECTIONS 6 AND 7, TOWNSHIP 24 SOUTH, RANGE 27 EAST,
ORANGE COUNTY, FLORIDA



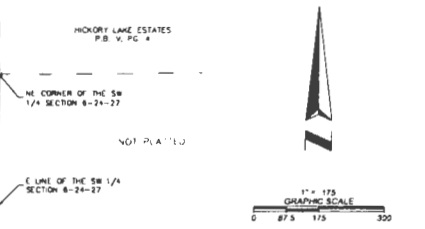
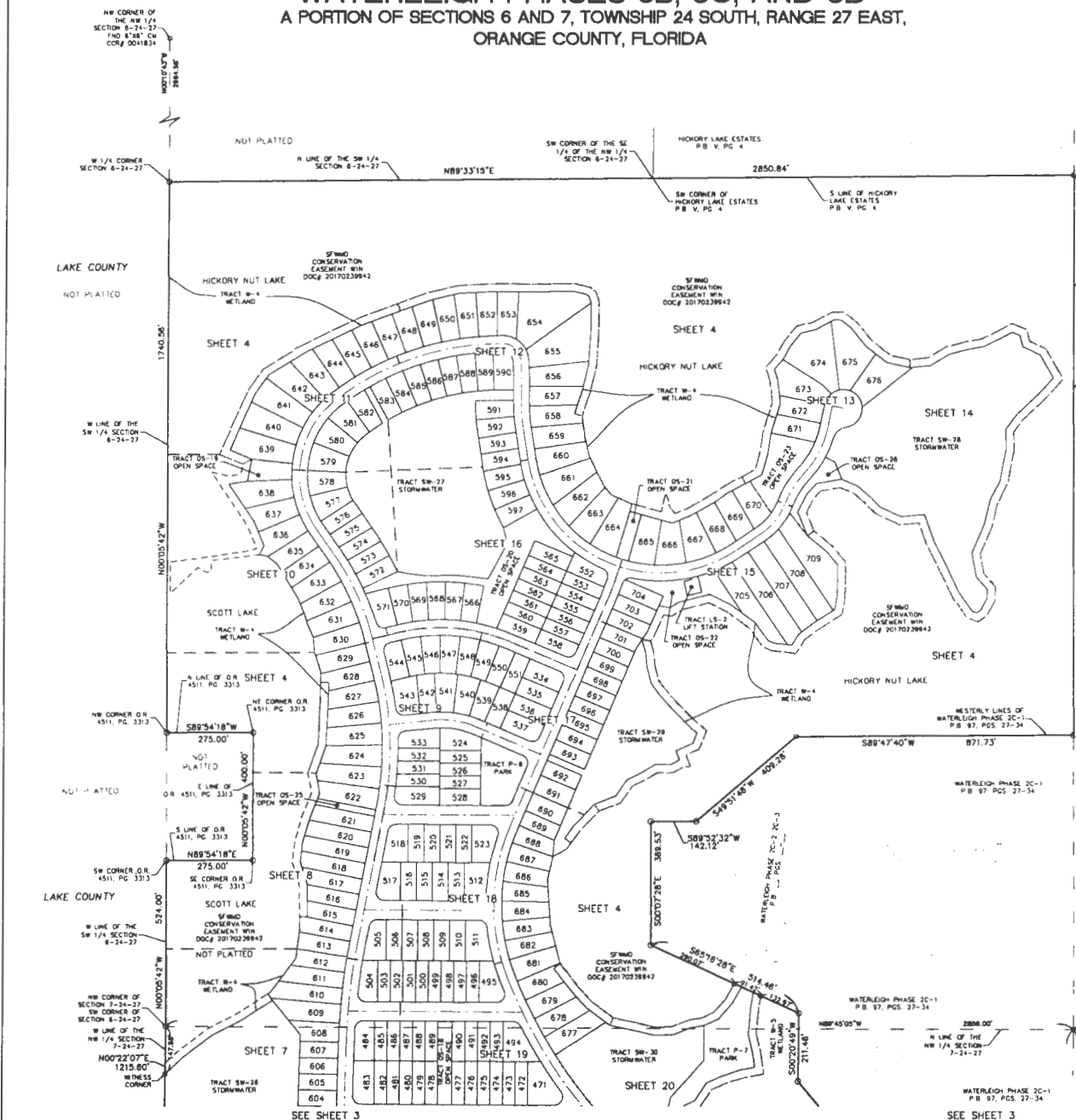
SHEET INDEX
SHEET 1 TO 2 OF 27 - LEGAL DESCRIPTION, DEDICATION, NOTES, LEGEND, & KEY SHEET
SHEET 3 TO 4 OF 27 - BOUNDARY INFORMATION
SHEETS 5 TO 27 OF 27 - CENTERLINE, TRACT, & LOT BLOCK GEOMETRY



18 EAST PLANT STREET
WINTER GARDEN, FLORIDA 34787
(407) 854-5355

WATERLEIGH PHASES 3B, 3C, AND 3D

A PORTION OF SECTIONS 6 AND 7, TOWNSHIP 24 SOUTH, RANGE 27 EAST, ORANGE COUNTY, FLORIDA



SIGN LEGEND

- (A) STOP R1-1
- (B) Street Name Dr 00 D3-1
- (C) Alley Name D3-1
- (D) SPEED LIMIT 25 R2-1
- (E) OM4-1

SHEET INDEX
 SHEET 1 TO 2 OF 27 - LEGAL DESCRIPTION, DEDICATION, NOTES, LEGEND, & KEY SHEET
 SHEET 3 TO 4 OF 27 - BOUNDARY INFORMATION
 SHEETS 5 TO 27 OF 27 - CENTERLINE, TRACT, & LOT BLOCK GEOMETRY



18 EAST PLANT STREET
 WINTER GARDEN, FLORIDA 34787
 (407) 854-5355

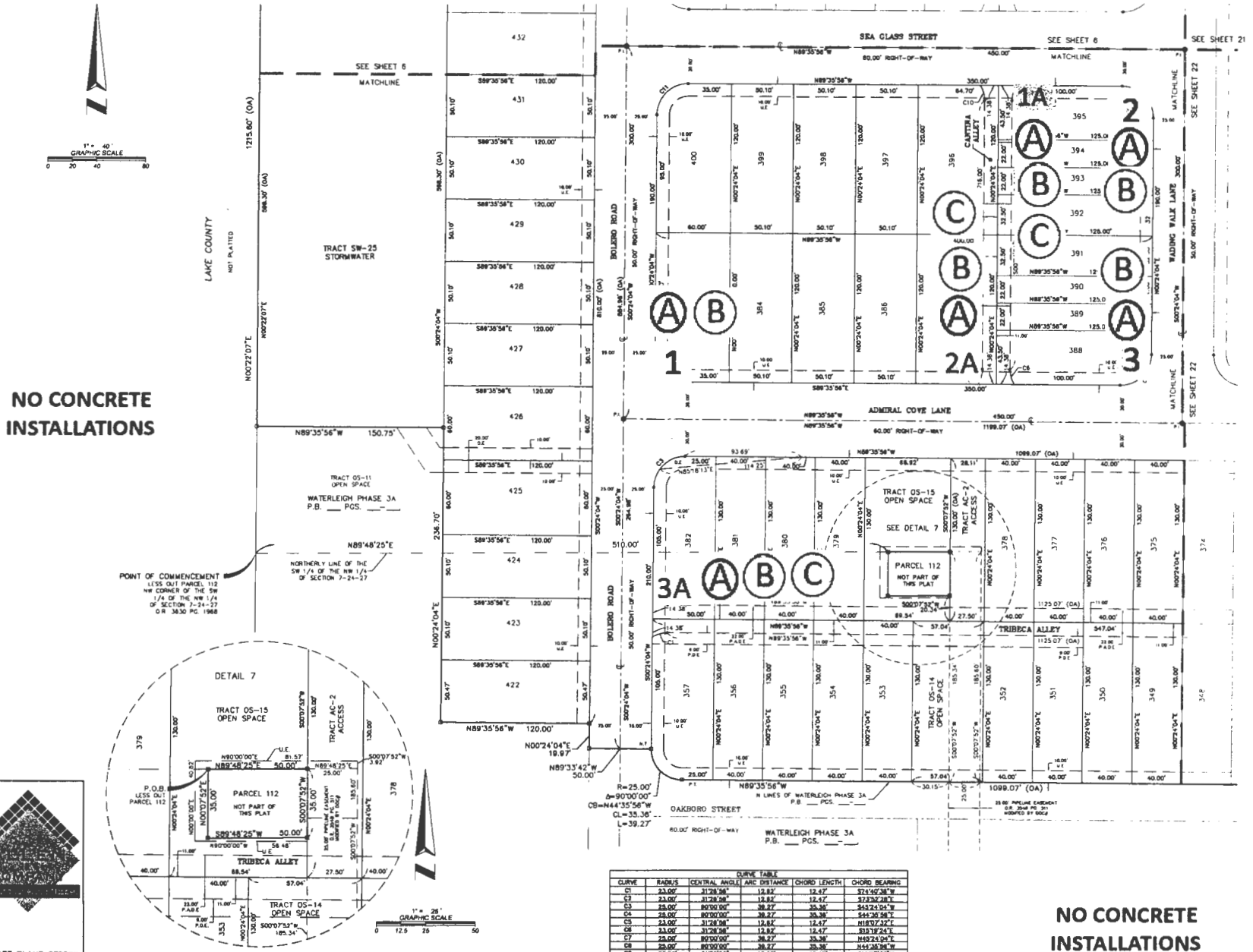
WATERLEIGH PHASES 3B, 3C, AND 3D

A PORTION OF SECTIONS 6 AND 7, TOWNSHIP 24 SOUTH, RANGE 27 EAST,
ORANGE COUNTY, FLORIDA

**NO CONCRETE
INSTALLATIONS**

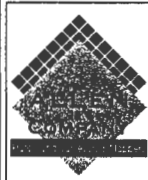
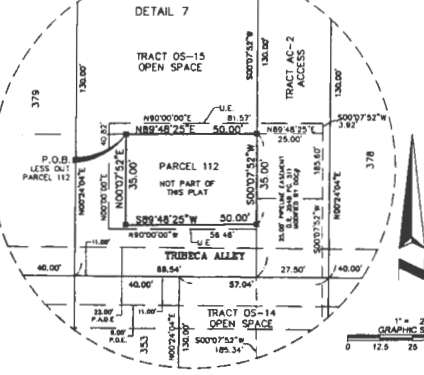
PLAT BOOK _____ PAGE _____

SHEET 5 OF 27



**NO CONCRETE
INSTALLATIONS**

POINT OF COMMENCEMENT
LESS OUT PARCEL 112
NW CORNER OF THE SW
1/4 OF THE NW 1/4
OF SECTION 7-24-27
OR 3430 PG. 1988



18 EAST PLANT STREET
WINTER GARDEN, FLORIDA 34787
(407) 834-8333

SHEET INDEX
SHEET 1 TO 2 OF 27 - LEGAL DESCRIPTION, DEDICATION, NOTES, LEGEND, & KEY SHEET
SHEETS 3 TO 4 OF 27 - BOUNDARY INFORMATION
SHEETS 5 TO 27 OF 27 - CENTERLINE, TRACT, & LOT BLOCK GEOMETRY

CURVE	RADIUS	CENTRAL ANGLE	ARC DISTANCE	CHORD LENGTH	CHORD BEARING
C1	33.00'	31.2856°	12.82'	12.47'	S73°42'38"W
C2	33.00'	31.2856°	12.82'	12.47'	S73°26'28"W
C3	28.00'	80.0000°	38.27'	35.36'	S45°24'04"W
C4	28.00'	80.0000°	38.27'	35.36'	S44°20'58"W
C5	33.00'	31.2856°	12.82'	12.47'	N18°27'27"E
C6	33.00'	31.2856°	12.82'	12.47'	S18°18'24"E
C7	28.00'	80.0000°	38.27'	35.36'	N89°24'04"E
C8	28.00'	80.0000°	38.27'	35.36'	N44°38'36"W
C9	33.00'	31.2856°	12.82'	12.47'	S18°07'32"W
C10	28.00'	31.2856°	12.82'	12.47'	N18°07'32"W
C11	33.00'	80.0000°	38.27'	35.36'	S45°24'04"W

**NO CONCRETE
INSTALLATIONS**

WATERLEIGH PHASES 3B, 3C, AND 3D
 A PORTION OF SECTIONS 6 AND 7, TOWNSHIP 24 SOUTH, RANGE 27 EAST,
 ORANGE COUNTY, FLORIDA

**NO CONCRETE
 INSTALLATIONS**

**NO CONCRETE
 INSTALLATIONS**

**NO CONCRETE
 INSTALLATIONS**



W LINE OF THE
 NW 1/4 SECTION
 7-21-27

34
 34
 34

LAKE COUNTY
 NOT PLATED

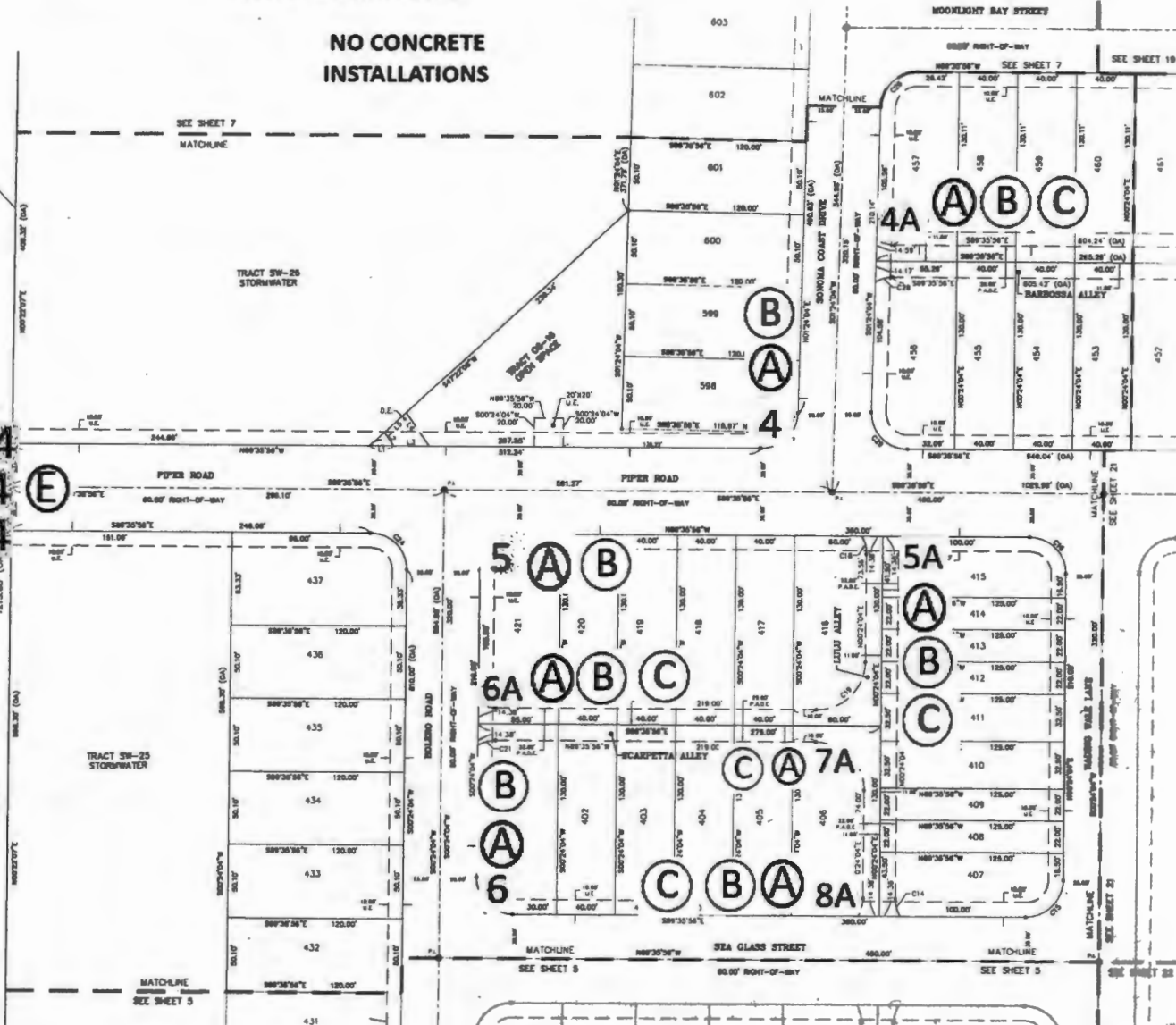


16 EAST PLANT STREET
 WINTER GARDEN, FLORIDA 34787
 (407) 854-5355

SHEET INDEX
 SHEET 1 TO 2 OF 27 - LEGAL DESCRIPTION, DEDICATION, NOTES, LEGEND, & KEY SHEET
 SHEETS 3 TO 4 OF 27 - BOUNDARY INFORMATION
 SHEETS 5 TO 27 OF 27 - CENTERLINE, TRACT, & LOT BLOCK GEOMETRY

LINE	BEARING	LENGTH
L1	S89°20'36\"E	18.37
L2	S84°28'00\"E	11.80
L3	S89°20'36\"E	24.98
L4	S24°23'00\"E	22.85
L5	N47°22'00\"E	20.82

CURVE	RADIUS	CENTRAL ANGLE	ARC DISTANCE	CHORD LENGTH	CHORD BEARING
C1	28.00'	80°00'00\"	28.27'	38.36'	S41°18'36\"E
C2	23.00'	31°28'36\"	12.87'	12.47'	N18°07'33\"E
C3	23.00'	31°28'36\"	12.87'	12.47'	S18°07'33\"E
C4	23.00'	31°28'36\"	12.87'	12.47'	N18°07'33\"E
C5	28.00'	80°00'00\"	28.27'	38.36'	N44°28'36\"E
C6	28.00'	31°28'36\"	12.87'	12.47'	S18°07'33\"E
C7	23.00'	31°28'36\"	12.87'	12.47'	N18°07'33\"E
C8	23.00'	80°00'00\"	28.27'	38.36'	N44°28'36\"E
C9	23.00'	31°28'36\"	12.87'	12.47'	S18°07'33\"E

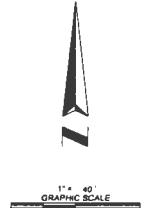


WATERLEIGH PHASES 3B, 3C, AND 3D
 A PORTION OF SECTIONS 6 AND 7, TOWNSHIP 24 SOUTH, RANGE 27 EAST,
 ORANGE COUNTY, FLORIDA

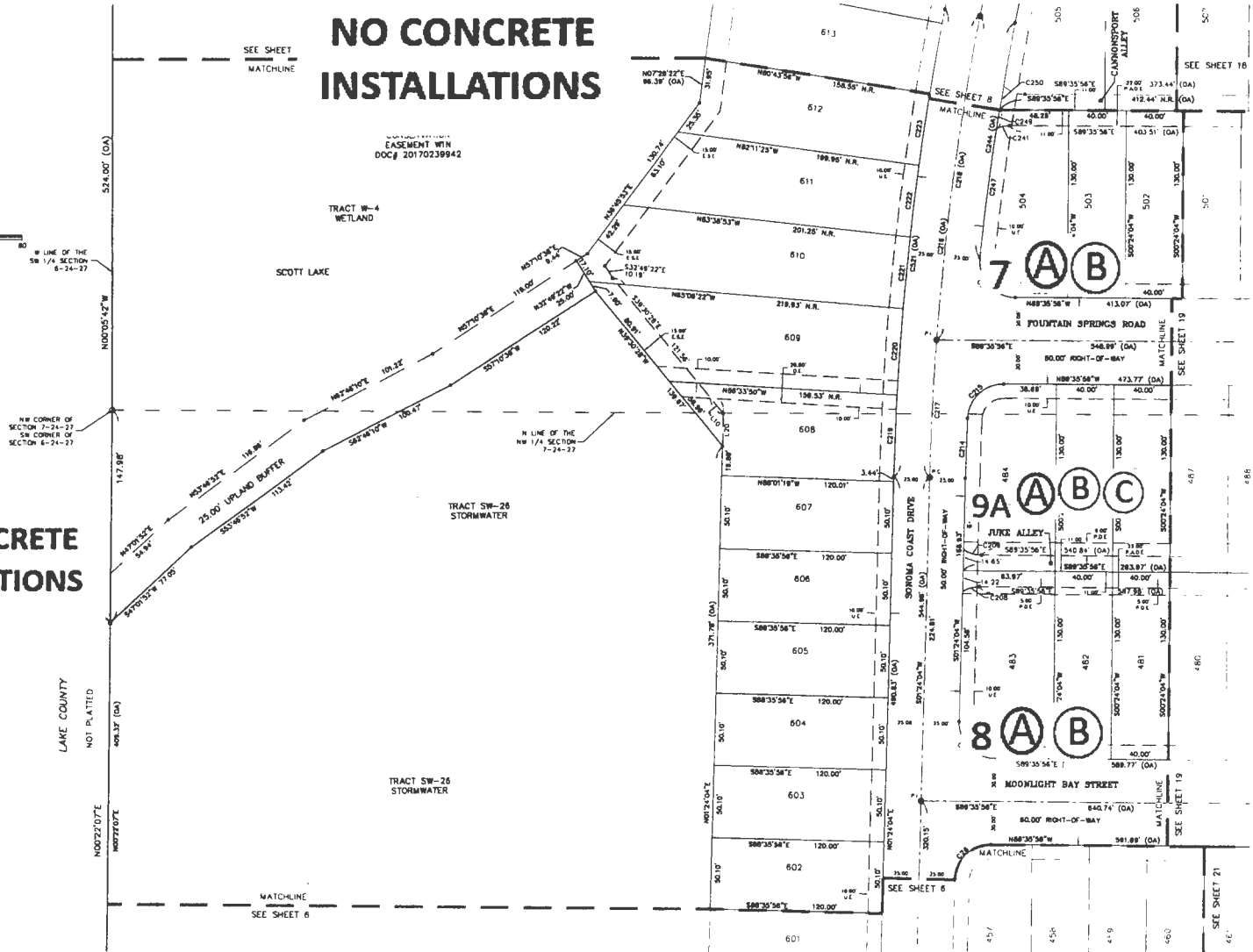
**NO CONCRETE
 INSTALLATIONS**

**NO CONCRETE
 INSTALLATIONS**

**NO CONCRETE
 INSTALLATIONS**



18 EAST PLANT STREET
 WHITE GARDEN, FLORIDA 34787
 (407) 854-5355



LINE TABLE

LINE	BEARING	LENGTH
L10	N20°00'28"W	13.81'
L20	N01°32'05"E	23.00'
L21	S24°31'28"W	13.70'

CURVE TABLE

CURVE	RADIUS	CENTRAL ANGLE	ARC DISTANCE	CHORD LENGTH	CHORD BEARING
C29	25.00'	88°00'00"	36.83'	36.00'	124°35'56"W
C200	23.00'	30°41'54"	12.32'	12.18'	273°32'07"W
C209	23.00'	30°42'08"	13.12'	12.85'	273°14'52"E
C213	25.00'	83°00'00"	38.72'	38.88'	564°00'36"E
C214	1905.00'	01°15'23"	41.88'	41.88'	302°31'40"W
C215	25.00'	87°54'37"	36.28'	35.85'	248°31'45"W
C216	1925.00'	01°26'24"	372.88'	372.88'	303°22'27"W
C217	1925.00'	02°30'14"	65.32'	65.31'	302°48'11"W
C218	1925.00'	08°48'21"	227.54'	227.51'	302°27'28"W
C219	1925.00'	01°26'43"	36.82'	36.88'	303°17'56"W
C220	1925.00'	01°26'47"	60.00'	60.00'	303°38'51"W
C221	1925.00'	01°26'20"	66.10'	66.10'	303°35'45"W
C222	1925.00'	01°26'20"	66.10'	66.10'	303°35'45"W
C223	1925.00'	01°26'20"	66.10'	66.10'	304°30'22"W

SHEET INDEX
 SHEET 1 TO 2 OF 27 - LEGAL DESCRIPTION, DEDICATION, NOTES, LEGEND, & KEY SHEET
 SHEETS 3 TO 4 OF 27 - BOUNDARY INFORMATION
 SHEETS 5 TO 27 OF 27 - CENTERLINE, TRACT, & LOT BLOCK GEOMETRY

WATERLEIGH PHASES 3B, 3C, AND 3D
 A PORTION OF SECTIONS 6 AND 7, TOWNSHIP 24 SOUTH, RANGE 27 EAST,
 ORANGE COUNTY, FLORIDA

**NO CONCRETE
 INSTALLATIONS**

**NO CONCRETE
 INSTALLATIONS**

**NO CONCRETE
 INSTALLATIONS**



W LINE OF THE
 SW 1/4 SECTION
 6-7A-27

LAKE COUNTY
 NOT PLATTED

NOT PLATTED

S LINE OF
 D.A. 1097, P.C. 2333
 N89°54'18"E 275.00'

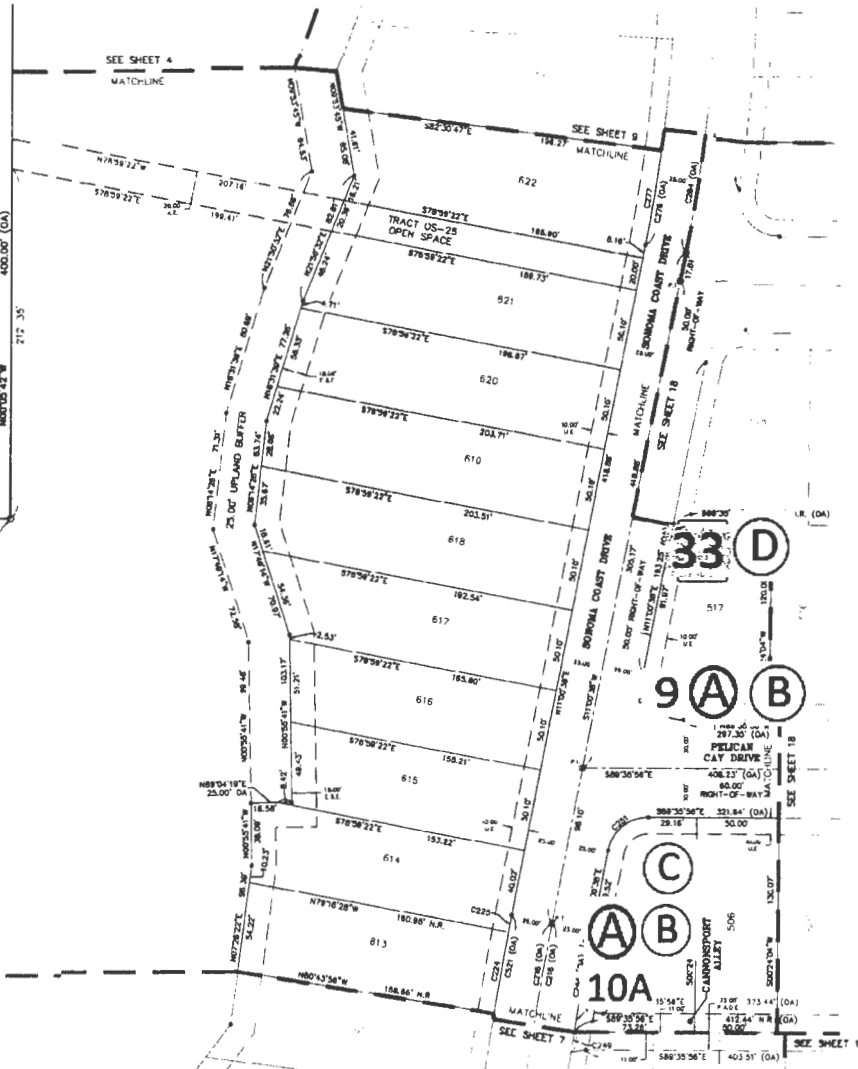
SE CORNER D.A.
 1097, P.C. 2333

SF WMO
 CONSERVATION
 EASEMENT W/O
 DOC# 20170239942

TRACT W-4
 WETLAND
 SCOTT LAKE

534.00' (O.A.)
 M007D542°W

MATCHLINE
 SEE SHEET 7



CURVE	RADIUS	INTERNAL ANGLE	ARC DISTANCE	CHORD LENGTH	CHORD BEARING
C216	1825.00'	08°34'34"	322.88'	322.44'	S08°12'21"W
C218	1825.00'	08°34'34"	322.88'	322.44'	S08°12'21"W
C221	1850.00'	01°28'30"	50.10'	50.10'	S08°34'43"W
C223	1850.00'	00°27'46"	10.08'	10.08'	S10°21'45"W
C233	33.00'	60°28'48"	18.46'	18.11'	S83°05'07"W
C234	1800.00'	04°34'00"	183.20'	183.20'	S06°13'08"W
C248	1800.00'	01°31'34"	81.86'	81.86'	S10°34'38"W
C258	1800.00'	00°23'28"	13.04'	13.04'	S06°34'57"W
C260	1800.00'	00°30'28"	18.88'	18.88'	S06°23'58"W
C261	38.00'	78°24'28"	34.84'	34.84'	S06°46'21"W
C268	25.00'	100°28'24"	43.80'	38.47'	S01°17'36"W
C276	885.00'	2°57'36"	618.01'	618.73'	N01°28'08"W
C277	886.00'	02°31'28"	26.72'	26.72'	N01°15'35"W
C284	886.00'	2°32'30"	548.86'	548.94'	N01°14'05"W
C285	886.00'	18°28'07"	283.01'	283.21'	N03°17'33"W
C291	1826.00'	02°38'34"	347.09'	348.87'	N03°12'21"W



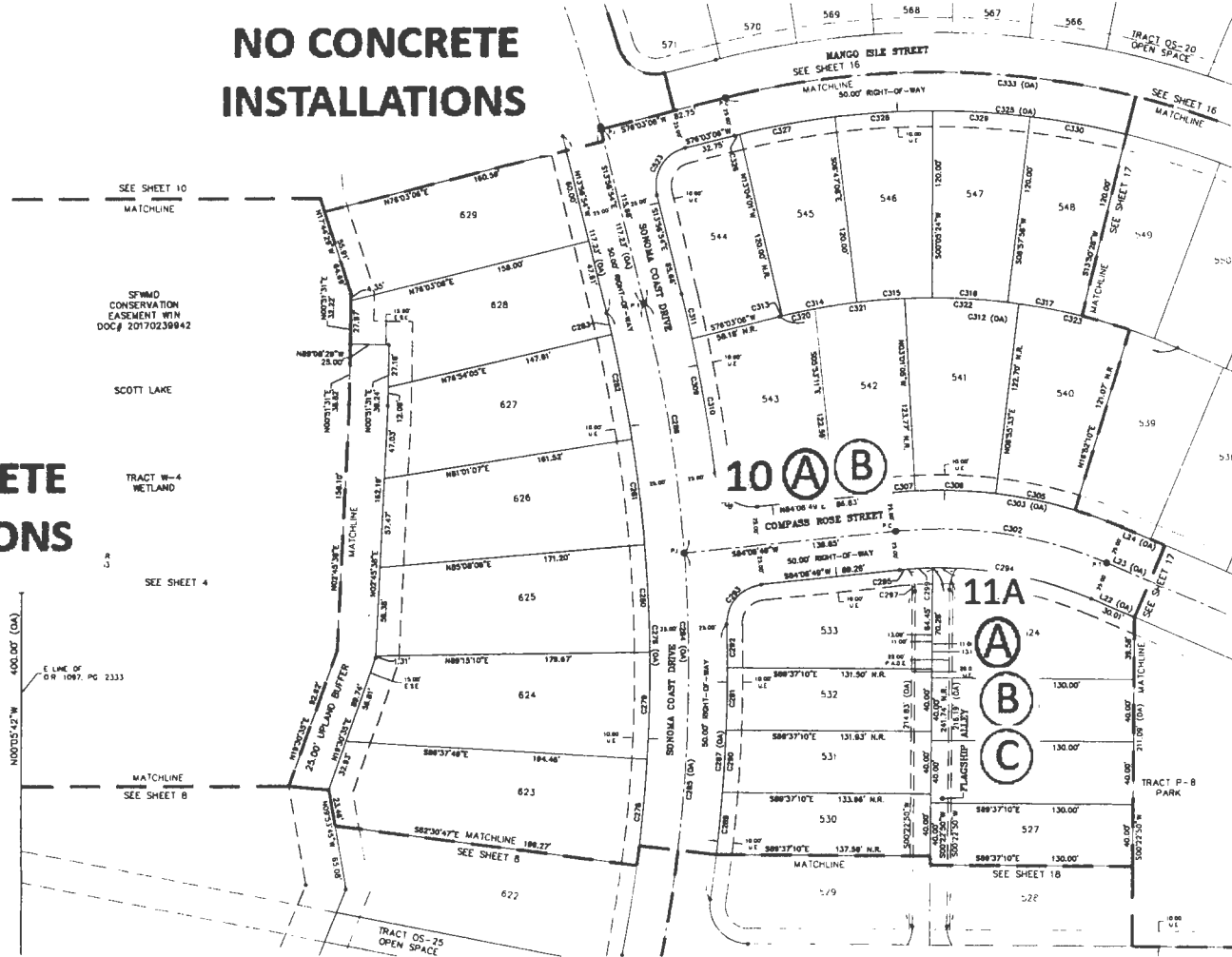
16 EAST PLANT STREET
 WINTER GARDEN, FLORIDA 34787
 (407) 854-5355

SHEET INDEX
 SHEET 1 TO 2 OF 27 - LEGAL DESCRIPTION, DEDICATION, NOTES, LEGEND, & KEY SHEET
 SHEETS 3 TO 4 OF 27 - BOUNDARY INFORMATION
 SHEETS 5 TO 27 OF 27 - CENTERLINE, TRACT, & LOT BLOCK GEOMETRY

WATERLEIGH PHASES 3B, 3C, AND 3D
 A PORTION OF SECTIONS 6 AND 7, TOWNSHIP 24 SOUTH, RANGE 27 EAST,
 ORANGE COUNTY, FLORIDA

**NO CONCRETE
 INSTALLATIONS**

**NO CONCRETE
 INSTALLATIONS**



LINE TABLE

LINE	BEARING	LENGTH
C27	N87°30'00"W	172.84
L33	N87°30'00"W	222.84
L24	S87°30'00"E	172.84

CURVE TABLE

CURVE	RADIUS	CENTRAL ANGLE	ARC DISTANCE	CHORD LENGTH	CHORD BEARING
C276	850.00'	243°23'21"	418.01'	412.23'	N01°28'08"W
C278	850.00'	043°37'01"	88.82'	88.81'	N08°28'42"E
C279	850.00'	043°37'01"	88.82'	88.81'	N08°28'42"E
C280	850.00'	043°37'01"	88.82'	88.81'	N08°28'42"E
C281	850.00'	043°37'01"	88.82'	88.81'	N08°28'42"E
C282	850.00'	043°37'01"	88.82'	88.81'	N08°28'42"E
C283	850.00'	003°20'28"	16.18'	16.18'	N13°12'24"W
C284	880.00'	232°23'22"	528.80'	423.84'	N03°18'42"E
C285	880.00'	132°02'21"	281.00'	283.21'	N03°12'42"E
C286	880.00'	08°21'28"	182.88'	182.21'	N02°11'11"W
C287	1000.00'	18°24'28"	178.78'	178.54'	N03°18'42"E
C288	1000.00'	02°17'24"	69.12'	69.18'	N05°34'00"E
C289	1000.00'	02°17'01"	69.00'	69.02'	N03°18'42"E
C290	1000.00'	02°18'11"	69.00'	69.00'	N02°28'42"E
C291	1000.00'	01°34'10"	27.52'	27.52'	N02°58'54"W
C292	26.00'	88°48'27"	37.45'	34.04'	S41°12'00"W
C294	250.00'	02°22'11"	128.00'	124.71'	N03°12'42"E
C295	250.00'	04°31'31"	21.20'	21.18'	S88°32'24"W
C296	250.00'	24°31'40"	104.84'	104.07'	N78°00'00"W
C297	23.00'	37°24'43"	15.07'	15.80'	N03°32'24"W
C298	23.00'	30°30'13"	14.28'	14.10'	N11°17'58"W
C299	250.00'	03°37'08"	15.22'	15.20'	S87°08'42"W
C300	250.00'	02°17'01"	15.38'	15.34'	N03°18'42"W
C302	275.00'	28°33'11"	138.83'	137.18'	N01°28'42"W
C303	300.00'	28°34'11"	151.22'	149.82'	N01°28'42"W

CURVE TABLE

CURVE	RADIUS	CENTRAL ANGLE	ARC DISTANCE	CHORD LENGTH	CHORD BEARING
C305	300.00'	09°28'37"	52.07'	52.07'	N18°08'08"W
C306	300.00'	08°28'37"	52.07'	52.07'	N08°02'48"W
C307	300.00'	02°23'07"	13.00'	13.00'	S89°32'24"W
C308	23.00'	88°28'23"	38.84'	35.87'	S81°24'50"E
C309	1000.00'	28°50'12"	112.01'	118.80'	N10°28'42"W
C310	1000.00'	04°28'34"	81.87'	81.84'	N02°58'54"W
C311	1000.00'	01°50'23"	28.35'	28.30'	N03°28'52"W
C312	850.00'	38°26'24"	281.17'	228.87'	N03°28'52"W
C313	400.00'	07°12'28"	71.87'	82'	S76°12'24"W

**NO CONCRETE
 INSTALLATIONS**

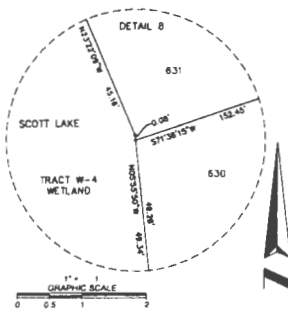


18 EAST PLANT STREET
 WINTER GARDEN, FLORIDA 34787
 (407) 854-3355

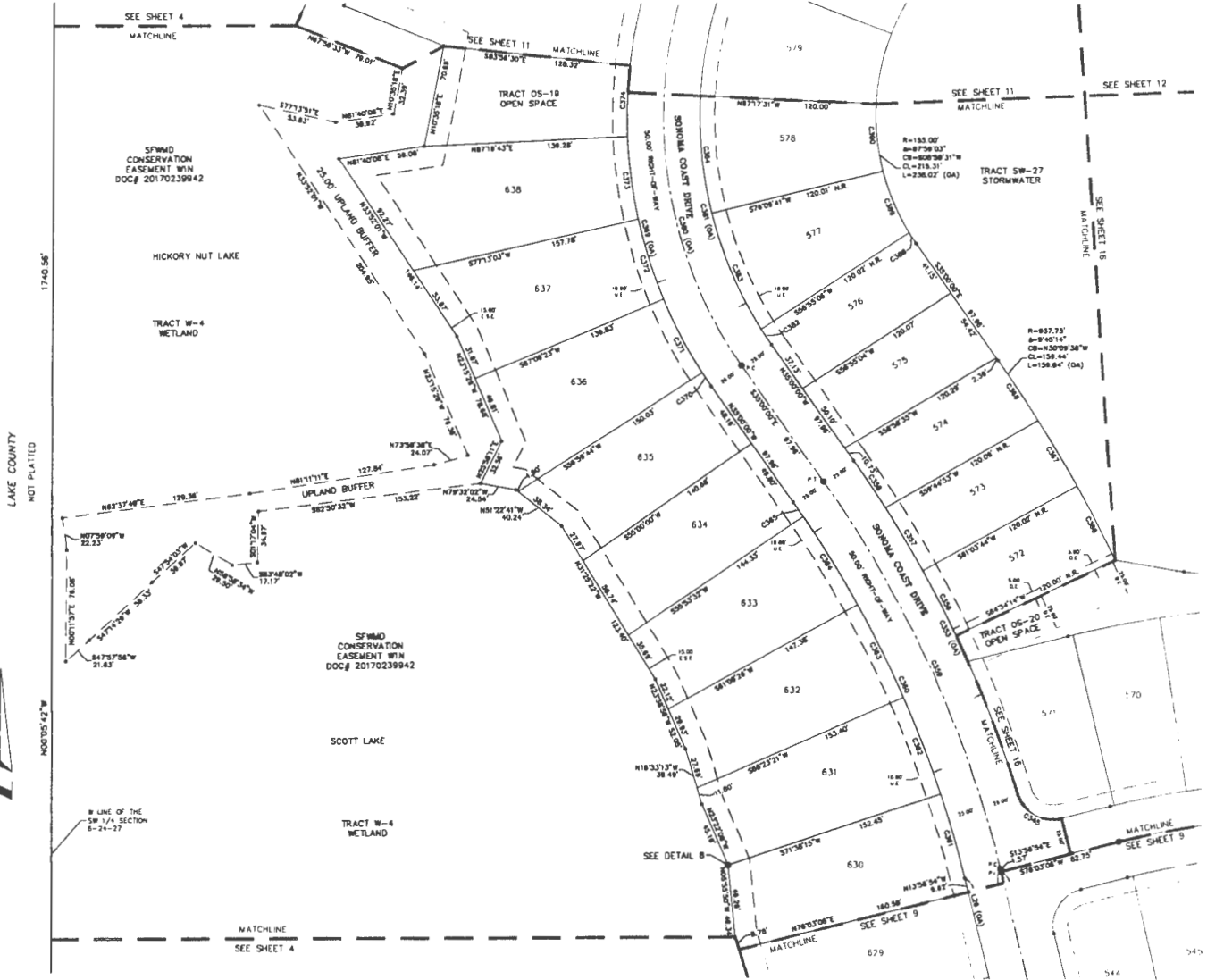
SHEET INDEX
 SHEET 1 TO 2 OF 27 - LEGAL DESCRIPTION, DEDICATION, NOTES, LEGEND, & KEY SHEET
 SHEETS 3 TO 4 OF 27 - BOUNDARY INFORMATION
 SHEETS 5 TO 27 OF 27 - CENTERLINE, TRACT, & LOT BLOCK GEOMETRY

WATERLEIGH PHASES 3B, 3C, AND 3D

A PORTION OF SECTIONS 6 AND 7, TOWNSHIP 24 SOUTH, RANGE 27 EAST,
ORANGE COUNTY, FLORIDA



18 EAST PLANT STREET
WINTER GARDEN, FLORIDA 34787
(407) 854-0350



LINE TABLE		
LINE	BEARING	LENGTH
L28	N30°50'58"W	28.09'

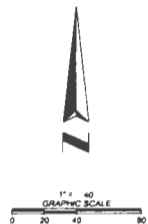
CURVE TABLE					
CURVE	RADIUS	CENTRAL ANGLE	ARC DISTANCE	CHORD LENGTH	CHORD BEARING
C345	25.00'	88°44'00"	37.84'	34.42'	S80°24'53"E
C353	825.00'	17°12'00"	258.10'	228.07'	S28°38'28"W
C358	825.00'	03°28'48"	50.11'	50.10'	N27°02'44"W
C357	825.00'	03°28'48"	50.11'	50.10'	N20°31'32"W
C356	825.00'	02°44'00"	39.37'	38.37'	S23°17'48"W
C359	800.00'	21°33'08"	283.84'	282.22'	S24°28'27"E
C360	725.00'	21°33'08"	284.12'	283.12'	S24°28'27"E
C361	725.00'	04°25'31"	58.71'	58.86'	N35°00'18"W
C362	725.00'	08°14'24"	70.89'	70.87'	N30°28'14"W
C363	725.00'	06°14'24"	70.88'	70.87'	N28°14'07"W
C364	725.00'	06°14'24"	70.89'	70.87'	N25°18'01"W
C365	725.00'	09°33'33"	12.07'	12.07'	N48°33'14"W
C366	832.72'	02°30'28"	37.98'	37.26'	S27°32'02"W
C367	832.72'	02°30'28"	37.97'	36.88'	S26°24'21"W

CURVE TABLE					
CURVE	RADIUS	CENTRAL ANGLE	ARC DISTANCE	CHORD LENGTH	CHORD BEARING
C368	822.72'	02°30'28"	38.31'	38.30'	N22°31'32"W
C369	822.00'	87°28'04"	159.07'	152.45'	S08°28'31"W
C370	825.00'	01°28'54"	11.82'	11.82'	S34°30'08"E
C371	825.00'	10°08'40"	37.30'	37.28'	S27°28'58"E
C372	825.00'	10°08'40"	37.30'	37.28'	S17°28'17"E
C373	825.00'	10°08'40"	37.30'	37.28'	S07°53'47"E
C374	825.00'	08°14'24"	48.62'	48.47'	S01°51'30"W
C380	300.00'	87°28'04"	140.88'	138.74'	S08°28'31"W
C381	275.00'	87°28'04"	122.28'	120.01'	S08°28'31"W
C382	275.00'	02°30'28"	12.86'	12.87'	S23°28'24"E
C383	275.00'	18°00'14"	46.44'	46.00'	S22°17'40"E
C384	275.00'	17°00'01"	41.80'	41.80'	S09°47'31"E
C385	150.00'	02°18'31"	5.86'	5.86'	S33°20'42"E
C386	150.00'	17°00'44"	46.11'	46.84'	S22°08'27"E
C390	150.00'	17°01'08"	46.84'	46.78'	S02°38'03"E

SHEET INDEX
SHEET 1 TO 2 OF 27 - LEGAL DESCRIPTION, DEDICATION, NOTES, LEGEND, & KEY SHEET
SHEETS 3 TO 4 OF 27 - BOUNDARY INFORMATION
SHEETS 5 TO 27 OF 27 - CENTERLINE, TRACT, & LOT BLOCK GEOMETRY

WATERLEIGH PHASES 3B, 3C, AND 3D

A PORTION OF SECTIONS 6 AND 7, TOWNSHIP 24 SOUTH, RANGE 27 EAST,
ORANGE COUNTY, FLORIDA



LAKE COUNTY
NOT PLATTED

1740.56' (0A)

1000.00' (7'W)

W LINE OF THE
SW 1/4 SECTION
6-24-27

MATCHLINE
SEE SHEET 10

MATCHLINE
SEE SHEET 10

MATCHLINE
SEE SHEET 10

MATCHLINE
SEE SHEET 10

MATCHLINE
SEE SHEET 10

MATCHLINE
SEE SHEET 10

MATCHLINE
SEE SHEET 10

SFMMO
CONSERVATION
EASEMENT WIN
DOC# 20170239942

HICKORY NUT LAKE

TRACT W-4
WETLAND

TRACT OS-19
OPEN SPACE

SEE SHEET 4

SEE SHEET 4

SEE SHEET 4

SEE SHEET 4

SEE SHEET 4

SEE SHEET 4

SEE SHEET 4

SEE SHEET 4

SEE SHEET 4

SEE SHEET 4

SEE SHEET 4

SEE SHEET 4

SEE SHEET 4

SEE SHEET 4

SEE SHEET 4

SEE SHEET 4

SEE SHEET 4

SEE SHEET 4

SEE SHEET 4

SEE SHEET 4

SEE SHEET 4

SEE SHEET 4

SEE SHEET 4

SEE SHEET 4

SEE SHEET 4

SEE SHEET 4

SEE SHEET 4

SEE SHEET 4

SEE SHEET 4

SEE SHEET 4

SEE SHEET 4

SEE SHEET 4

SEE SHEET 4

SEE SHEET 4

SEE SHEET 4

SEE SHEET 4

SEE SHEET 4

SEE SHEET 4

SEE SHEET 4

SEE SHEET 4

SEE SHEET 4

CURVE	RADIUS	CENTRAL ANGLE	ARC DISTANCE	CHORD LENGTH	CHORD BEARING
C349	323.00'	87.28°	498.02'	450.48'	S88°24'21"W
C379	323.00'	102.13°	58.77'	58.88'	S114°18'17"W
C378	323.00'	102°08'40"	57.34'	57.28'	S121°28'28"W
C377	323.00'	102°08'40"	57.34'	57.28'	S121°28'28"W
C378	323.00'	102°08'40"	57.34'	57.28'	S121°28'28"W
C379	323.00'	081°27'37"	35.33'	35.34'	S48°34'34"W
C380	300.00'	87.28°	492.86'	438.74'	S90°28'31"W
C381	275.00'	87.28°	422.28'	382.01'	S98°28'31"W
C382	275.00'	182°28'37"	88.71'	88.33'	S113°08'38"W
C388	275.00'	172°08'37"	86.71'	86.33'	S102°08'38"W
C387	275.00'	131°08'38"	83.88'	83.74'	S48°18'53"W
C381	158.00'	182°28'37"	30.00'	48.78'	S113°08'38"W
C382	158.00'	182°28'37"	30.00'	48.78'	S113°08'38"W
C383	158.00'	171°08'38"	38.01'	38.87'	S48°18'53"W

CURVE	RADIUS	CENTRAL ANGLE	ARC DISTANCE	CHORD LENGTH	CHORD BEARING
C384	204.81'	01°38'14"	13.89'	13.89'	S83°31'08"W
C385	204.81'	04°03'51"	50.00'	49.88'	S98°38'11"W
C386	825.00'	27°22'14"	360.50'	350.88'	S71°18'10"W
C387	825.00'	01°38'14"	18.17'	18.17'	S83°31'08"W
C388	825.00'	04°21'32"	83.17'	83.13'	S98°23'02"W
C389	825.00'	01°24'24"	78.01'	78.01'	S88°20'31"W
C408	850.00'	27°22'14"	558.88'	548.17'	S71°18'10"W
C409	875.00'	37°32'14"	573.23'	563.08'	S71°18'10"W
C410	875.00'	01°28'24"	218.83'	218.83'	S85°15'36"W
C411	875.00'	03°51'58"	58.88'	58.88'	S98°15'36"W
C412	875.00'	03°51'40"	58.88'	58.88'	S97°18'38"W
C413	875.00'	03°51'58"	58.88'	58.88'	S85°15'36"W
C414	875.00'	03°51'40"	58.88'	58.88'	S97°18'38"W

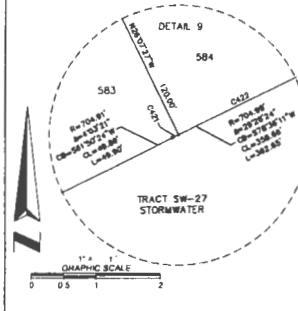
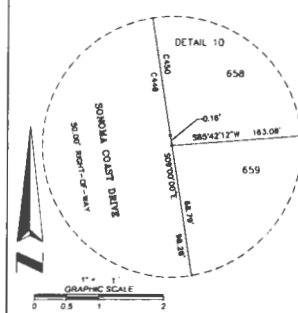
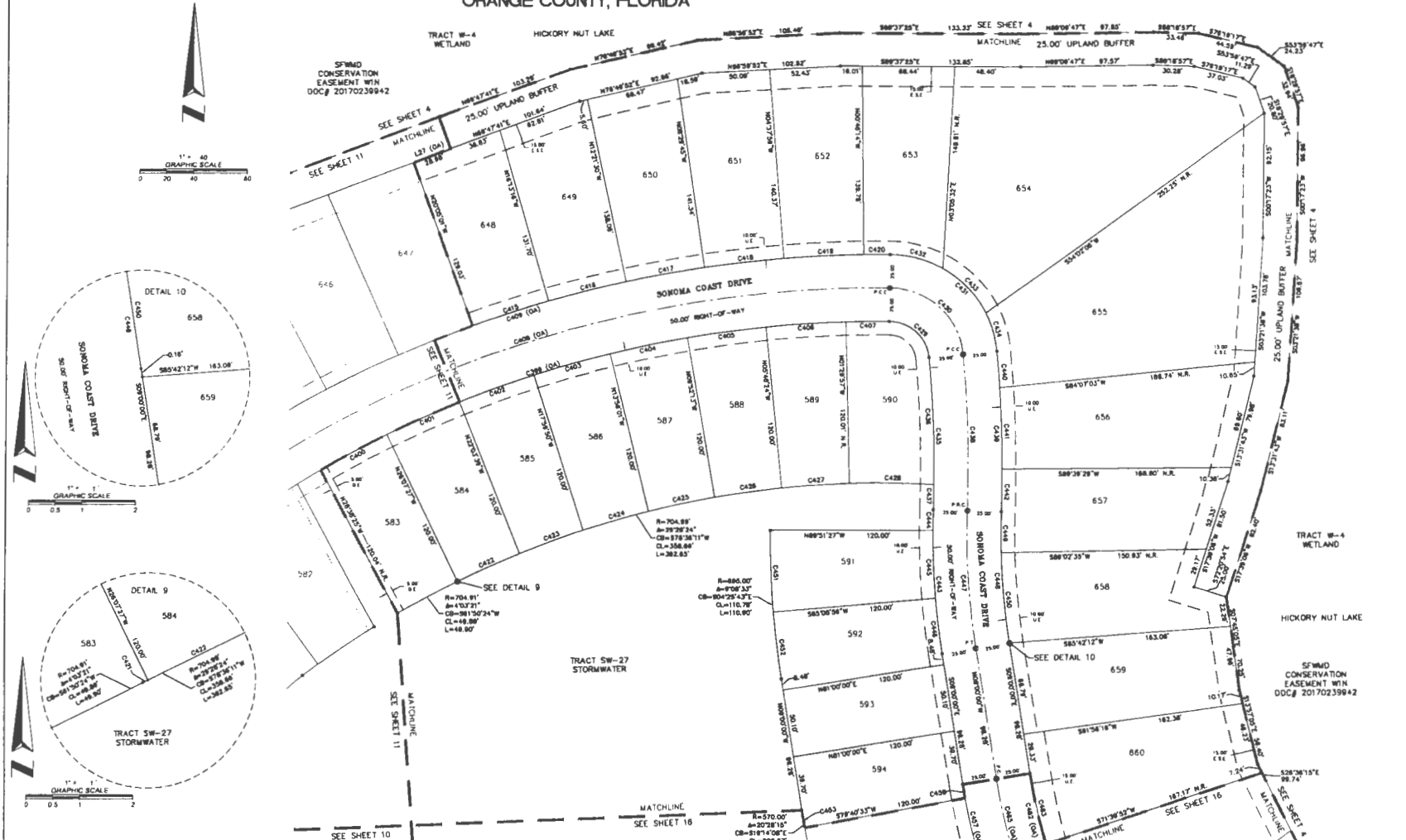


18 EAST PLANT STREET
WINTER GARDEN, FLORIDA 34787
(407) 654-3355

SHEET INDEX
SHEET 1 TO 2 OF 27 - LEGAL DESCRIPTION, DEDICATION, NOTES, LEGEND, & KEY SHEET
SHEETS 3 TO 4 OF 27 - BOUNDARY INFORMATION
SHEETS 5 TO 27 OF 27 - CENTERLINE, TRACT, & LOT BLOCK GEOMETRY

WATERLEIGH PHASES 3B, 3C, AND 3D

A PORTION OF SECTIONS 6 AND 7, TOWNSHIP 24 SOUTH, RANGE 27 EAST,
ORANGE COUNTY, FLORIDA



CURVE	RADIUS	CENTRAL ANGLE	ARC DISTANCE	CHORD LENGTH	CHORD BEARING
C389	824.00	173°14'	843.82	530.88	S71°56'10"W
C400	824.00	03°20'20"	55.82	55.27	S81°37'23"W
C401	824.00	05°30'49"	58.31	58.50	S82°32'37"W
C402	824.00	09°51'48"	58.31	58.50	S82°38'18"W
C403	824.00	04°31'48"	58.31	58.50	S74°52'04"W
C404	824.00	04°31'48"	58.31	58.50	S72°05'54"W
C405	824.00	04°31'48"	58.31	58.50	S82°09'51"W
C406	824.00	04°30'38"	58.07	58.01	S88°14'34"W
C407	824.00	03°20'20"	55.82	55.27	S82°32'37"W
C408	850.00	37°32'14"	558.88	548.87	S71°40'10"W
C409	878.00	37°32'14"	674.22	663.09	S71°40'10"W
C410	824.00	03°20'20"	55.82	55.27	S81°37'23"W
C411	824.00	04°31'48"	58.31	58.50	S82°32'37"W
C412	824.00	04°31'48"	58.31	58.50	S82°38'18"W
C413	824.00	04°31'48"	58.31	58.50	S74°52'04"W
C414	824.00	04°31'48"	58.31	58.50	S72°05'54"W
C415	824.00	04°31'48"	58.31	58.50	S82°09'51"W
C416	824.00	04°30'38"	58.07	58.01	S88°14'34"W
C417	824.00	03°20'20"	55.82	55.27	S82°32'37"W
C418	824.00	05°30'49"	58.31	58.50	S82°38'18"W
C419	824.00	09°51'48"	58.31	58.50	S82°38'18"W
C420	824.00	04°31'48"	58.31	58.50	S74°52'04"W
C421	704.89	20°28'24"	111.77	111.77	S88°24'28"W
C422	704.89	04°30'38"	58.07	58.01	S88°14'34"W
C423	704.89	04°30'38"	58.07	58.01	S88°14'34"W
C424	704.89	04°30'38"	58.07	58.01	S88°14'34"W
C425	704.89	04°30'38"	58.07	58.01	S88°14'34"W
C426	704.89	04°30'38"	58.07	58.01	S88°14'34"W
C427	704.89	04°30'38"	58.07	58.01	S88°14'34"W
C428	704.89	04°30'38"	58.07	58.01	S88°14'34"W
C429	704.89	04°30'38"	58.07	58.01	S88°14'34"W
C430	704.89	04°30'38"	58.07	58.01	S88°14'34"W
C431	80.00	83°30'34"	117.50	107.42	N47°24'15"W
C432	80.00	29°02'20"	40.55	40.12	N74°27'24"W
C433	80.00	83°30'34"	117.50	107.42	N47°24'15"W
C434	80.00	29°02'20"	40.55	40.12	N74°27'24"W
C435	824.00	04°30'38"	58.07	58.01	S88°14'34"W
C436	824.00	04°30'38"	58.07	58.01	S88°14'34"W

CURVE	RADIUS	CENTRAL ANGLE	ARC DISTANCE	CHORD LENGTH	CHORD BEARING
C437	824.00	03°20'20"	55.82	55.27	S81°37'23"W
C438	824.00	05°30'49"	58.31	58.50	S82°32'37"W
C439	824.00	09°51'48"	58.31	58.50	S82°38'18"W
C440	824.00	04°31'48"	58.31	58.50	S74°52'04"W
C441	824.00	04°31'48"	58.31	58.50	S72°05'54"W
C442	824.00	04°31'48"	58.31	58.50	S82°09'51"W
C443	824.00	04°30'38"	58.07	58.01	S88°14'34"W
C444	824.00	03°20'20"	55.82	55.27	S81°37'23"W
C445	824.00	05°30'49"	58.31	58.50	S82°32'37"W
C446	824.00	09°51'48"	58.31	58.50	S82°38'18"W
C447	824.00	04°31'48"	58.31	58.50	S74°52'04"W
C448	824.00	04°31'48"	58.31	58.50	S72°05'54"W
C449	824.00	04°31'48"	58.31	58.50	S82°09'51"W
C450	824.00	04°30'38"	58.07	58.01	S88°14'34"W
C451	824.00	03°20'20"	55.82	55.27	S81°37'23"W
C452	824.00	05°30'49"	58.31	58.50	S82°32'37"W
C453	824.00	09°51'48"	58.31	58.50	S82°38'18"W
C454	824.00	04°31'48"	58.31	58.50	S74°52'04"W
C455	824.00	04°31'48"	58.31	58.50	S72°05'54"W
C456	824.00	04°31'48"	58.31	58.50	S82°09'51"W
C457	824.00	04°30'38"	58.07	58.01	S88°14'34"W
C458	824.00	03°20'20"	55.82	55.27	S81°37'23"W
C459	824.00	05°30'49"	58.31	58.50	S82°32'37"W
C460	824.00	09°51'48"	58.31	58.50	S82°38'18"W

CURVE	RADIUS	CENTRAL ANGLE	ARC DISTANCE	CHORD LENGTH	CHORD BEARING
C461	824.00	03°20'20"	55.82	55.27	S81°37'23"W
C462	824.00	05°30'49"	58.31	58.50	S82°32'37"W
C463	824.00	09°51'48"	58.31	58.50	S82°38'18"W
C464	824.00	04°31'48"	58.31	58.50	S74°52'04"W
C465	824.00	04°31'48"	58.31	58.50	S72°05'54"W
C466	824.00	04°31'48"	58.31	58.50	S82°09'51"W
C467	824.00	04°30'38"	58.07	58.01	S88°14'34"W
C468	824.00	03°20'20"	55.82	55.27	S81°37'23"W
C469	824.00	05°30'49"	58.31	58.50	S82°32'37"W
C470	824.00	09°51'48"	58.31	58.50	S82°38'18"W
C471	824.00	04°31'48"	58.31	58.50	S74°52'04"W
C472	824.00	04°31'48"	58.31	58.50	S72°05'54"W
C473	824.00	04°31'48"	58.31	58.50	S82°09'51"W
C474	824.00	04°30'38"	58.07	58.01	S88°14'34"W
C475	824.00	03°20'20"	55.82	55.27	S81°37'23"W
C476	824.00	05°30'49"	58.31	58.50	S82°32'37"W
C477	824.00	09°51'48"	58.31	58.50	S82°38'18"W
C478	824.00	04°31'48"	58.31	58.50	S74°52'04"W
C479	824.00	04°31'48"	58.31	58.50	S72°05'54"W
C480	824.00	04°31'48"	58.31	58.50	S82°09'51"W



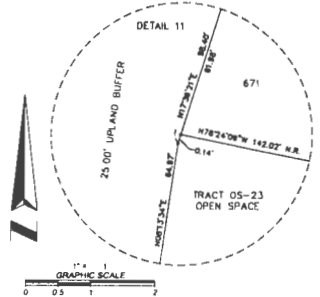
LINE	BEARING	LENGTH
L27	S88°13'12"	129.34'

SHEET INDEX
 SHEET 1 TO 2 OF 27 - LEGAL DESCRIPTION, DEDICATION, NOTES, LEGEND, & KEY SHEET
 SHEETS 3 TO 4 OF 27 - BOUNDARY INFORMATION
 SHEETS 5 TO 27 OF 27 - CENTERLINE, TRACT, & LOT BLOCK GEOMETRY

WATERLEIGH PHASES 3B, 3C, AND 3D

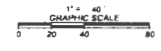
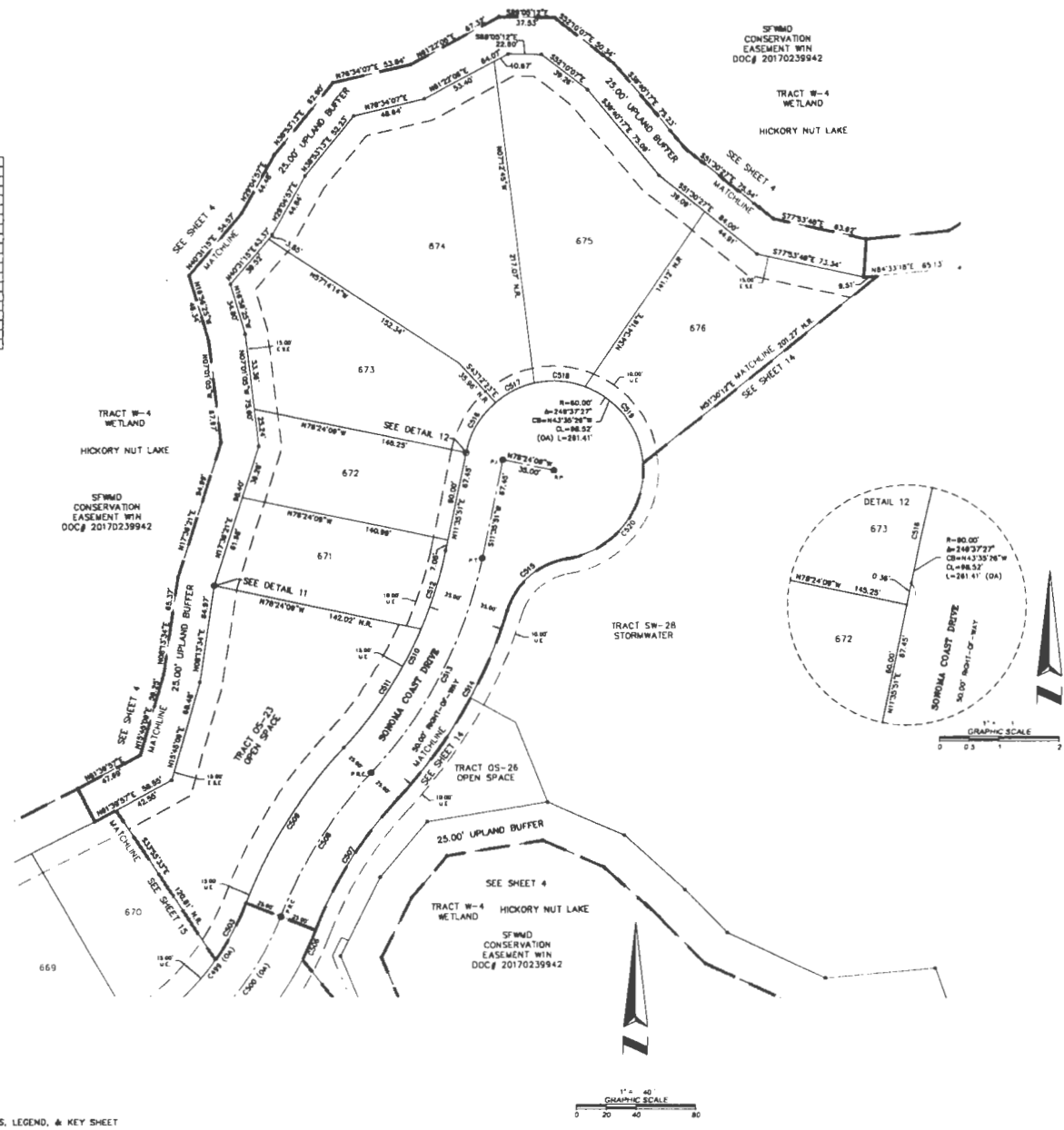
A PORTION OF SECTIONS 6 AND 7, TOWNSHIP 24 SOUTH, RANGE 27 EAST,
ORANGE COUNTY, FLORIDA

CURVE TABLE					
CURVE	RADIUS	CENTRAL ANGLE	ARC DISTANCE	CHORD LENGTH	CHORD BEARING
C489	173.00'	33.04° 37"	107.14'	105.47'	N38°32'08"E
C500	300.00'	33.04° 37"	192.44'	190.94'	N38°32'08"E
C501	173.00'	141°05'59"	53.32'	63.21'	N78°00'18"W
C506	243.00'	09°27'30"	21.48'	21.48'	N92°53'43"E
C507	275.00'	21°30'18"	104.87'	104.34'	S23°30'37"W
C508	300.00'	21°30'18"	115.93'	113.82'	S31°50'37"W
C509	323.00'	21°30'18"	124.08'	123.31'	S31°50'37"W
C510	275.00'	31°18'15"	100.00'	108.27'	N27°23'08"E
C511	275.00'	18°48'43"	88.17'	84.70'	N34°37'14"E
C512	275.00'	11°28'32"	54.87'	54.87'	N77°19'07"E
C513	300.00'	31°18'15"	100.00'	108.27'	N27°23'08"E
C514	323.00'	23°48'44"	148.62'	145.18'	N28°27'43"E
C515	50.00'	84°08'58"	58.00'	53.11'	S48°08'18"W
C516	60.00'	37°19'43"	38.81'	34.80'	S30°20'37"W
C517	60.00'	27°30'10"	28.15'	26.88'	S20°20'28"W
C518	60.00'	33°09'57"	34.72'	34.30'	N68°09'28"W
C519	60.00'	65°03'50"	68.15'	64.52'	N37°02'20"W
C520	60.00'	82°43'37"	89.28'	81.83'	N38°21'18"E



16 EAST PLANT STREET
WINTER GARDEN, FLORIDA 34787
(407) 634-3355

SHEET INDEX
SHEET 1 TO 2 OF 27 - LEGAL DESCRIPTION, DEDICATION, NOTES, LEGEND, & KEY SHEET
SHEETS 3 TO 4 OF 27 - BOUNDARY INFORMATION
SHEETS 5 TO 27 OF 27 - CENTERLINE, TRACT, & LOT BLOCK GEOMETRY



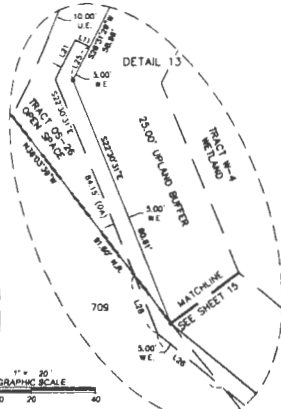
WATERLEIGH PHASES 3B, 3C, AND 3D

A PORTION OF SECTIONS 6 AND 7, TOWNSHIP 24 SOUTH, RANGE 27 EAST,
ORANGE COUNTY, FLORIDA



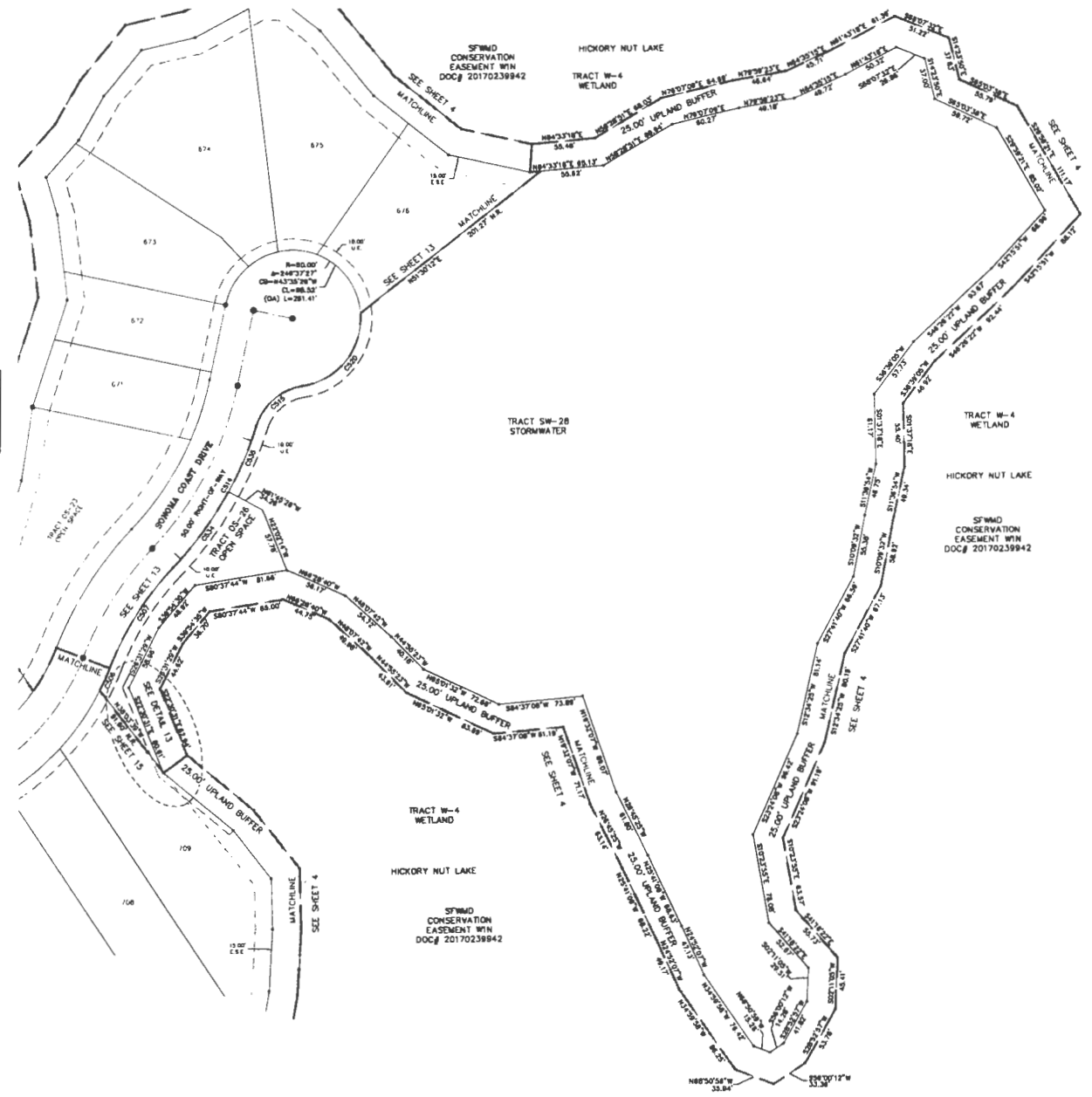
LINE TABLE		
LINE	BEARING	LENGTH
L11	N83°26'31"W	3.00'
L12	S28°21'29"W	1A.70'
L23	N82°21'28"E	11.88'
L30	N50°50'58"W	28.08'
L28	N22°26'31"W	18.22'

CURVE TABLE					
CURVE	RADIUS	CENTRAL ANGLE	ARC DISTANCE	CHORD LENGTH	CHORD BEARING
C508	223.00'	09°27'50"	21.98'	21.98'	N22°57'45"E
C507	223.00'	21°32'18"	104.87'	104.34'	S31°38'37"W
C514	223.00'	29°58'41"	118.42'	120.18'	N83°57'45"E
C515	30.00'	81°08'36"	26.00'	33.11'	S48°08'18"W
C520	30.00'	86°53'37"	26.78'	31.84'	N36°21'18"E
C534	223.00'	14°28'54"	83.11'	83.88'	N50°24'06"E
C535	223.00'	11°08'20"	63.23'	63.17'	N22°37'48"E



18 EAST PLANT STREET
WINTER GARDEN, FLORIDA 34787
(407) 654-5355

SHEET INDEX
SHEET 1 TO 2 OF 27 - LEGAL DESCRIPTION, DEDICATION, NOTES, LEGEND, & KEY SHEET
SHEETS 3 TO 4 OF 27 - BOUNDARY INFORMATION
SHEETS 5 TO 27 OF 27 - CENTERLINE, TRACT, & LOT BLOCK GEOMETRY



SFWMD
CONSERVATION
EASEMENT WITH
DOC# 20170238942

HICKORY NUT LAKE

TRACT W-4
WETLAND

TRACT SW-28
STORMWATER

TRACT W-4
WETLAND

HICKORY NUT LAKE

SFWMD
CONSERVATION
EASEMENT WITH
DOC# 20170238942

TRACT W-4
WETLAND

HICKORY NUT LAKE

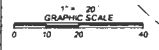
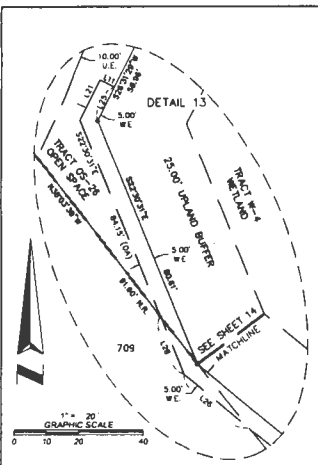
SFWMD
CONSERVATION
EASEMENT WITH
DOC# 20170238942

WATERLEIGH PHASES 3B, 3C, AND 3D
 A PORTION OF SECTIONS 6 AND 7, TOWNSHIP 24 SOUTH, RANGE 27 EAST,
 ORANGE COUNTY, FLORIDA

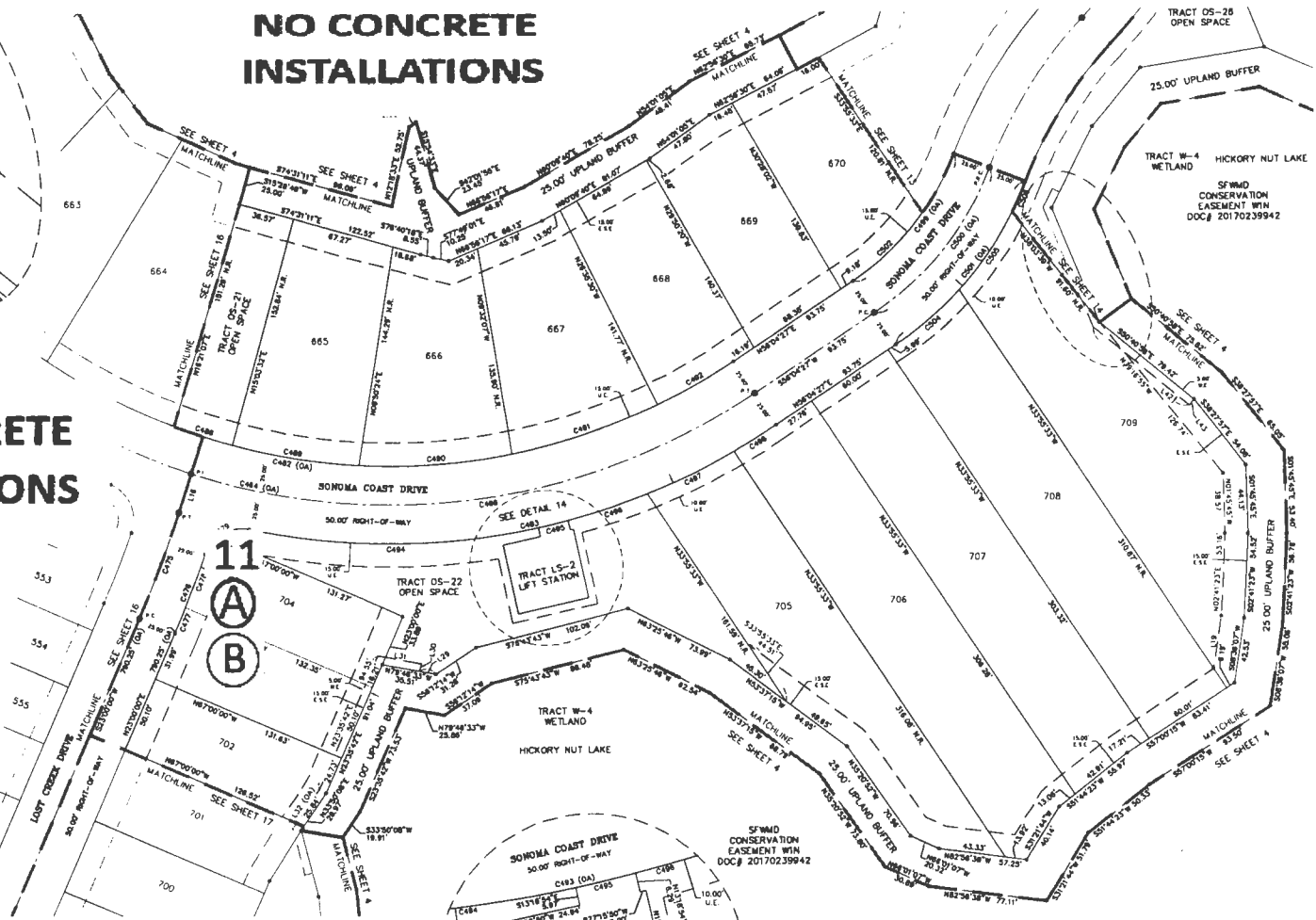
**NO CONCRETE
 INSTALLATIONS**

**NO CONCRETE
 INSTALLATIONS**

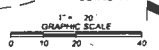
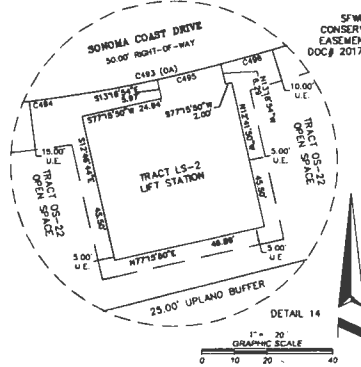
**NO CONCRETE
 INSTALLATIONS**



18 EAST PLANT STREET
 WINTER GARDEN, FLORIDA 34787
 (407) 854-5355



CURVE	RADIUS	CENTRAL ANGLE	ARC DISTANCE	CHORD LENGTH	CHORD BEARING
C485	425.00'	114°30'33"	862.48'	718.98'	S84°27'47"E
C486	425.00'	81°01'00"	363.47'	373.60'	S83°25'21"E
C476	800.00'	08°13'54"	73.01'	72.86'	N02°23'08"E
C478	828.00'	02°58'33"	25.85'	25.84'	N01°30'54"E
C477	828.00'	01°13'27"	18.11'	18.11'	N02°22'08"E
C478	828.00'	02°35'08"	38.74'	38.74'	N02°28'00"E
C478	25.00'	82°25'11"	38.02'	38.98'	S80°28'53"W
C480	25.00'	21°08'59"	13.86'	13.70'	S38°30'37"W
C481	25.00'	80°48'12"	22.18'	21.62'	S78°23'02"W
C482	400.00'	114°30'33"	802.82'	674.44'	S84°27'47"E



SHEET INDEX
 SHEET 1 TO 2 OF 27 - LEGAL DESCRIPTION, DEDICATION, NOTES, LEGEND, & KEY SHEET
 SHEETS 3 TO 4 OF 27 - BOUNDARY INFORMATION
 SHEETS 5 TO 27 OF 27 - CENTERLINE, TRACT, & LOT BLOCK GEOMETRY

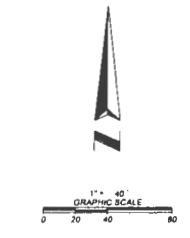
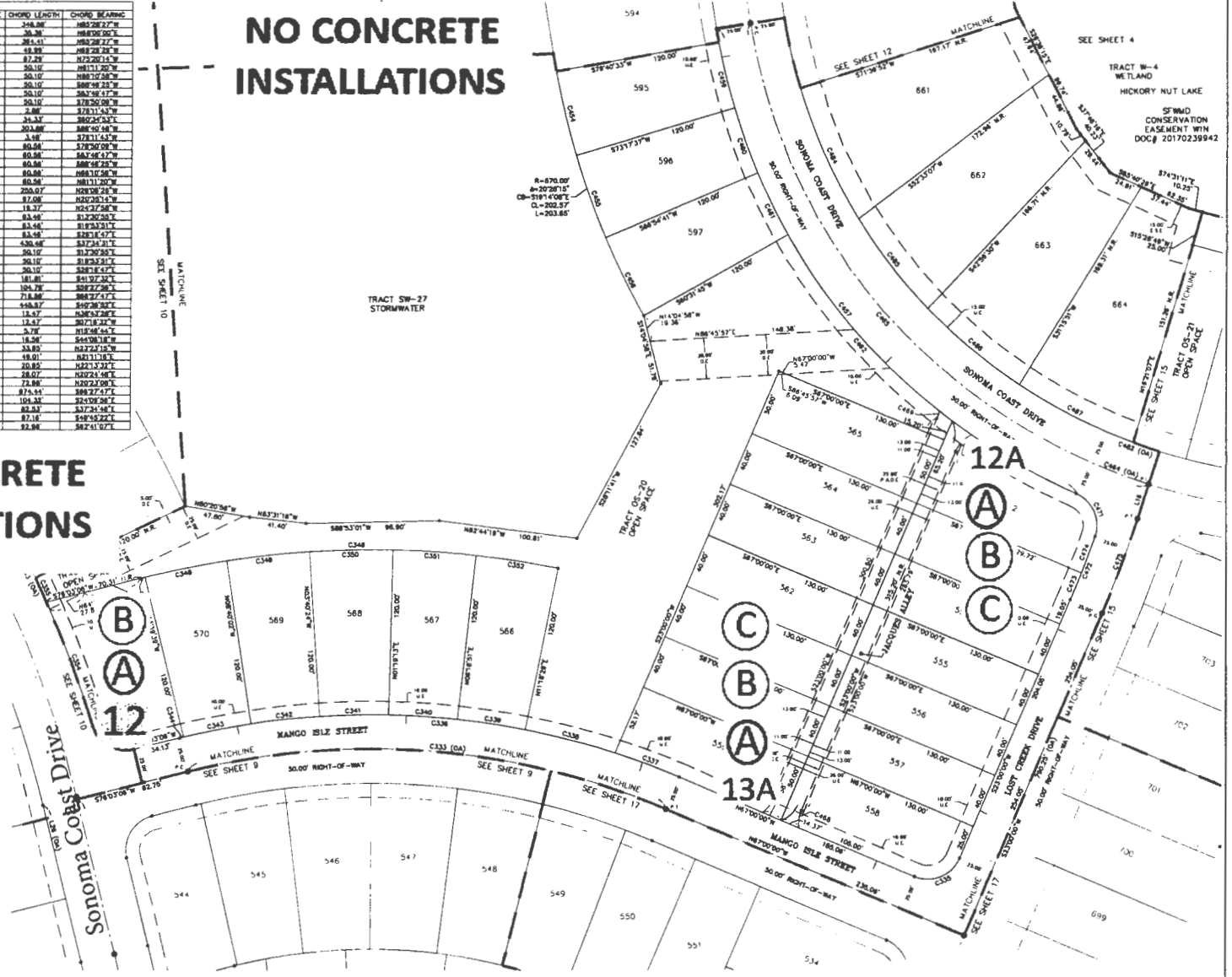
WATERLEIGH PHASES 3B, 3C, AND 3D
 A PORTION OF SECTIONS 6 AND 7, TOWNSHIP 24 SOUTH, RANGE 27 EAST,
 ORANGE COUNTY, FLORIDA

CURVE	RADIUS	CENTRAL ANGLE	ARC DISTANCE	CHORD LENGTH	CHORD BEARING
C333	500.00	26.3824°	324.88	348.88	N85.2827°W
C335	33.00	80.0000°	38.27	38.26	N88.0000°E
C338	375.00	26.3824°	378.86	391.51	N85.2827°W
C337	375.00	04.5828°	50.00	48.89	N88.2828°W
C338	375.00	08.1656°	87.33	87.29	N75.2814°W
C339	375.00	04.5828°	50.11	50.10	N81.1120°W
C340	375.00	04.5828°	50.11	50.10	N88.1058°W
C341	375.00	04.5828°	50.11	50.10	N86.2828°W
C342	375.00	04.5828°	50.11	50.10	N83.5811°W
C343	375.00	04.5828°	50.11	50.10	N78.5009°W
C344	375.00	00.7144°	3.86	3.86	N78.1143°W
C345	25.00	86.4100°	37.84	35.33	S80.2453°E
C346	885.00	28.1322°	308.26	303.89	N88.5058°W
C347	885.00	00.7144°	3.87	3.87	N78.1143°W
C348	885.00	04.5828°	80.87	80.68	S78.5009°W
C349	885.00	04.5828°	80.87	80.68	N87.4817°W
C350	885.00	04.5828°	80.87	80.68	N86.4725°W
C351	885.00	04.5828°	80.87	80.68	N85.1058°W
C352	885.00	04.5828°	80.87	80.68	N81.1120°W
C353	885.00	04.5828°	80.87	80.68	N78.5009°W
C354	885.00	08.1656°	87.12	87.08	N50.2814°W
C355	885.00	01.7024°	18.37	18.37	N24.2758°E
C434	375.00	07.1508°	238.10	238.07	N13.2840°E
C435	375.00	08.1656°	83.49	83.46	N13.2840°E
C436	375.00	08.1656°	83.49	83.46	N13.2840°E
C437	375.00	08.1656°	83.49	83.46	N13.2840°E
C438	375.00	08.1656°	83.49	83.46	N13.2840°E
C439	375.00	08.1656°	83.49	83.46	N13.2840°E
C440	375.00	08.1656°	83.49	83.46	N13.2840°E
C441	375.00	08.1656°	83.49	83.46	N13.2840°E
C442	375.00	08.1656°	83.49	83.46	N13.2840°E
C443	375.00	08.1656°	83.49	83.46	N13.2840°E
C444	375.00	08.1656°	83.49	83.46	N13.2840°E
C445	375.00	08.1656°	83.49	83.46	N13.2840°E
C446	375.00	08.1656°	83.49	83.46	N13.2840°E
C447	375.00	08.1656°	83.49	83.46	N13.2840°E
C448	375.00	08.1656°	83.49	83.46	N13.2840°E
C449	375.00	08.1656°	83.49	83.46	N13.2840°E
C450	375.00	08.1656°	83.49	83.46	N13.2840°E
C451	375.00	08.1656°	83.49	83.46	N13.2840°E
C452	375.00	08.1656°	83.49	83.46	N13.2840°E
C453	375.00	08.1656°	83.49	83.46	N13.2840°E
C454	375.00	08.1656°	83.49	83.46	N13.2840°E
C455	375.00	08.1656°	83.49	83.46	N13.2840°E
C456	375.00	08.1656°	83.49	83.46	N13.2840°E
C457	375.00	08.1656°	83.49	83.46	N13.2840°E
C458	375.00	08.1656°	83.49	83.46	N13.2840°E
C459	375.00	08.1656°	83.49	83.46	N13.2840°E
C460	375.00	08.1656°	83.49	83.46	N13.2840°E
C461	375.00	08.1656°	83.49	83.46	N13.2840°E
C462	375.00	08.1656°	83.49	83.46	N13.2840°E
C463	375.00	08.1656°	83.49	83.46	N13.2840°E
C464	375.00	08.1656°	83.49	83.46	N13.2840°E
C465	375.00	08.1656°	83.49	83.46	N13.2840°E
C466	375.00	08.1656°	83.49	83.46	N13.2840°E
C467	375.00	08.1656°	83.49	83.46	N13.2840°E
C468	375.00	08.1656°	83.49	83.46	N13.2840°E
C469	375.00	08.1656°	83.49	83.46	N13.2840°E
C470	375.00	08.1656°	83.49	83.46	N13.2840°E
C471	375.00	08.1656°	83.49	83.46	N13.2840°E
C472	375.00	08.1656°	83.49	83.46	N13.2840°E
C473	375.00	08.1656°	83.49	83.46	N13.2840°E
C474	375.00	08.1656°	83.49	83.46	N13.2840°E
C475	375.00	08.1656°	83.49	83.46	N13.2840°E
C483	600.00	11.2638°	84.86	83.83	S87.2548°E
C489	600.00	12.2637°	87.81	87.16	S87.2548°E
C487	600.00	12.2637°	83.18	82.88	S87.2548°E

NO CONCRETE INSTALLATIONS

NO CONCRETE INSTALLATIONS

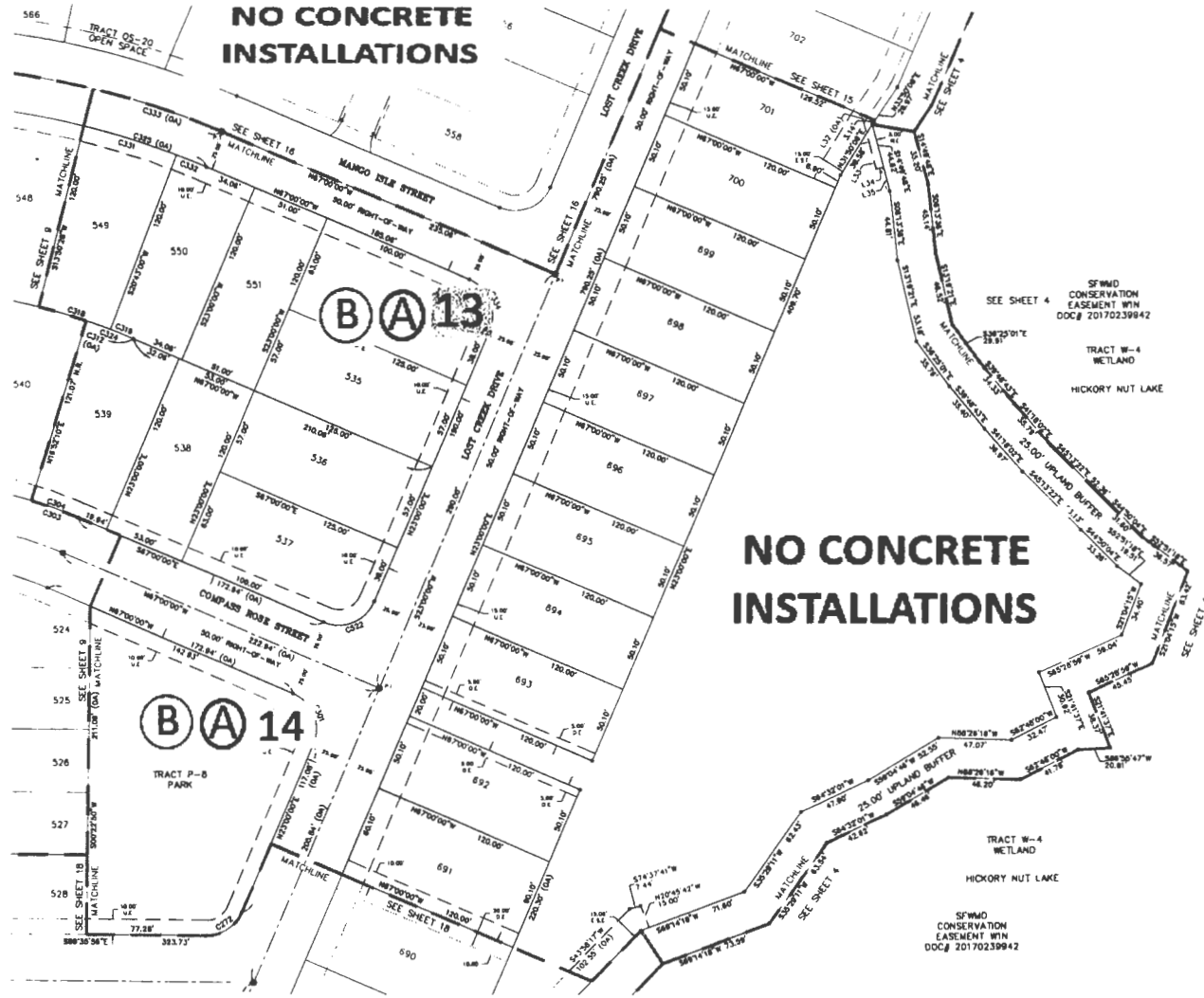
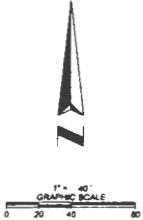
NO CONCRETE INSTALLATIONS



16 EAST PLANT STREET
 WINTER GARDEN, FLORIDA 34787
 (407) 854-5555

SHEET INDEX
 SHEETS 1 TO 2 OF 27 - LEGAL DESCRIPTION, DEDICATION, NOTES, LEGEND, & KEY SHEET
 SHEETS 3 TO 4 OF 27 - BOUNDARY INFORMATION
 SHEETS 5 TO 27 OF 27 - CENTERLINE, TRACT, & LOT BLOCK GEOMETRY

WATERLEIGH PHASES 3B, 3C, AND 3D
 A PORTION OF SECTIONS 6 AND 7, TOWNSHIP 24 SOUTH, RANGE 27 EAST,
 ORANGE COUNTY, FLORIDA



NO CONCRETE INSTALLATIONS

NO CONCRETE INSTALLATIONS

NO CONCRETE INSTALLATIONS

SF/MD CONSERVATION EASEMENT WIN DOC# 20170239842
 TRACT W-4 WETLAND
 HICKORY NUT LAKE

TRACT W-4 WETLAND
 HICKORY NUT LAKE
 SF/MD CONSERVATION EASEMENT WIN DOC# 20170239842

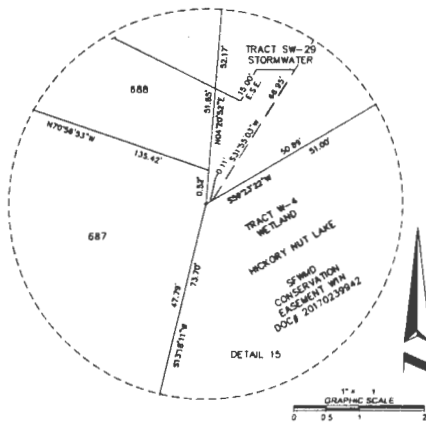
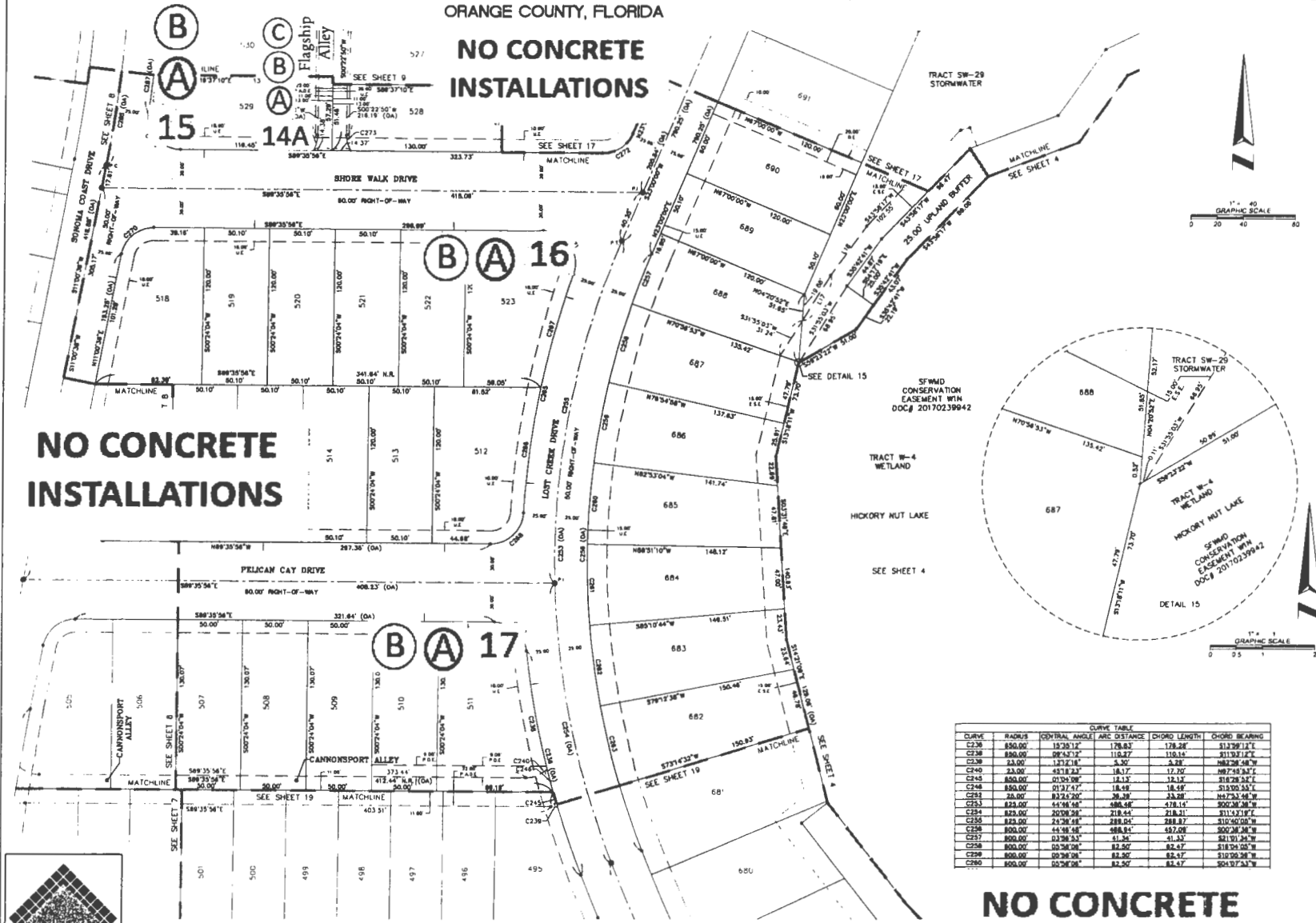
CURVE	RADIUS	CENTRAL ANGLE	ARC DISTANCE	CHORD LENGTH	CHORD BEARING
C272	25.00'	87°21'54"	28.41'	27.74'	S58°52'00"E
C301	25.00'	90°00'00"	39.27'	35.36'	N52°00'00"E
C303	308.00'	88°33'11"	153.88'	148.85'	N61°28'28"W
C312	400.00'	38°28'31"	261.17'	238.87'	N88°28'27"W
C318	400.00'	08°33'32"	148.86'	148.37'	N77°53'18"W
C319	400.00'	02°17'00"	18.14'	18.14'	N88°08'30"W
C324	400.00'	04°28'08"	33.88'	33.87'	N88°18'23"W
C325	400.00'	38°28'31"	261.17'	238.87'	N88°28'27"W
C331	325.00'	08°36'32"	118.00'	117.72' E	N77°52'18"W
C332	350.00'	02°17'00"	20.87'	20.87'	N88°08'30"W
C333	500.00'	38°28'31"	304.88'	288.06'	N88°28'27"W
C334	25.00'	90°00'00"	39.27'	35.36'	N52°00'00"E
C352	25.00'	90°00'00"	39.27'	35.36'	N52°00'00"E



16 EAST PLANT STREET
 WINTER GARDEN, FLORIDA 34787
 (407) 854-5355

SHEET INDEX
 SHEET 1 TO 2 OF 27 - LEGAL DESCRIPTION, DEDICATION, NOTES, LEGEND, & KEY SHEET
 SHEETS 3 TO 4 OF 27 - BOUNDARY INFORMATION
 SHEETS 5 TO 27 OF 27 - CENTERLINE, TRACT, & LOT BLOCK GEOMETRY

WATERLEIGH PHASES 3B, 3C, AND 3D
 A PORTION OF SECTIONS 6 AND 7, TOWNSHIP 24 SOUTH, RANGE 27 EAST,
 ORANGE COUNTY, FLORIDA



CURVE TABLE					
CURVE	RADIUS	CENTRAL ANGLE	ARC DISTANCE	CHORD LENGTH	CHORD BEARING
C230	850.00'	12.3512°	178.82'	178.28'	S13.92°12"E
C238	850.00'	49.5212°	118.87'	110.65'	S13.92°12"E
C239	23.00'	123.18°	5.90'	5.88'	N83.28°48"W
C240	23.00'	43.1823°	18.17'	17.20'	N83.28°48"W
C245	850.00'	02.0538°	12.12'	12.12'	S13.92°12"E
C248	850.00'	01.9747°	18.49'	18.49'	S15.00°53"E
C251	28.00'	82.2420°	38.39'	33.28'	N47.24°48"W
C253	825.00'	44.9848°	498.48'	428.14'	S00.28°38"W
C254	825.00'	20.0828°	218.44'	218.31'	S11.51°17"E
C255	825.00'	24.2818°	288.84'	288.87'	S10.40°00"W
C256	800.00'	44.9848°	498.81'	452.08'	S00.28°38"W
C257	800.00'	03.3853°	61.34'	61.33'	S21.91°34"W
C258	800.00'	05.2808°	82.50'	82.47'	S18.04°00"W
C259	800.00'	09.2808°	82.50'	82.47'	S19.08°36"W
C260	800.00'	09.2808°	82.50'	82.47'	S01.97°33"W

LINE TABLE		
LINE	BEARING	LENGTH
L17	S31.38°03"W	40.82'
L18	S35.52°41"W	48.48'

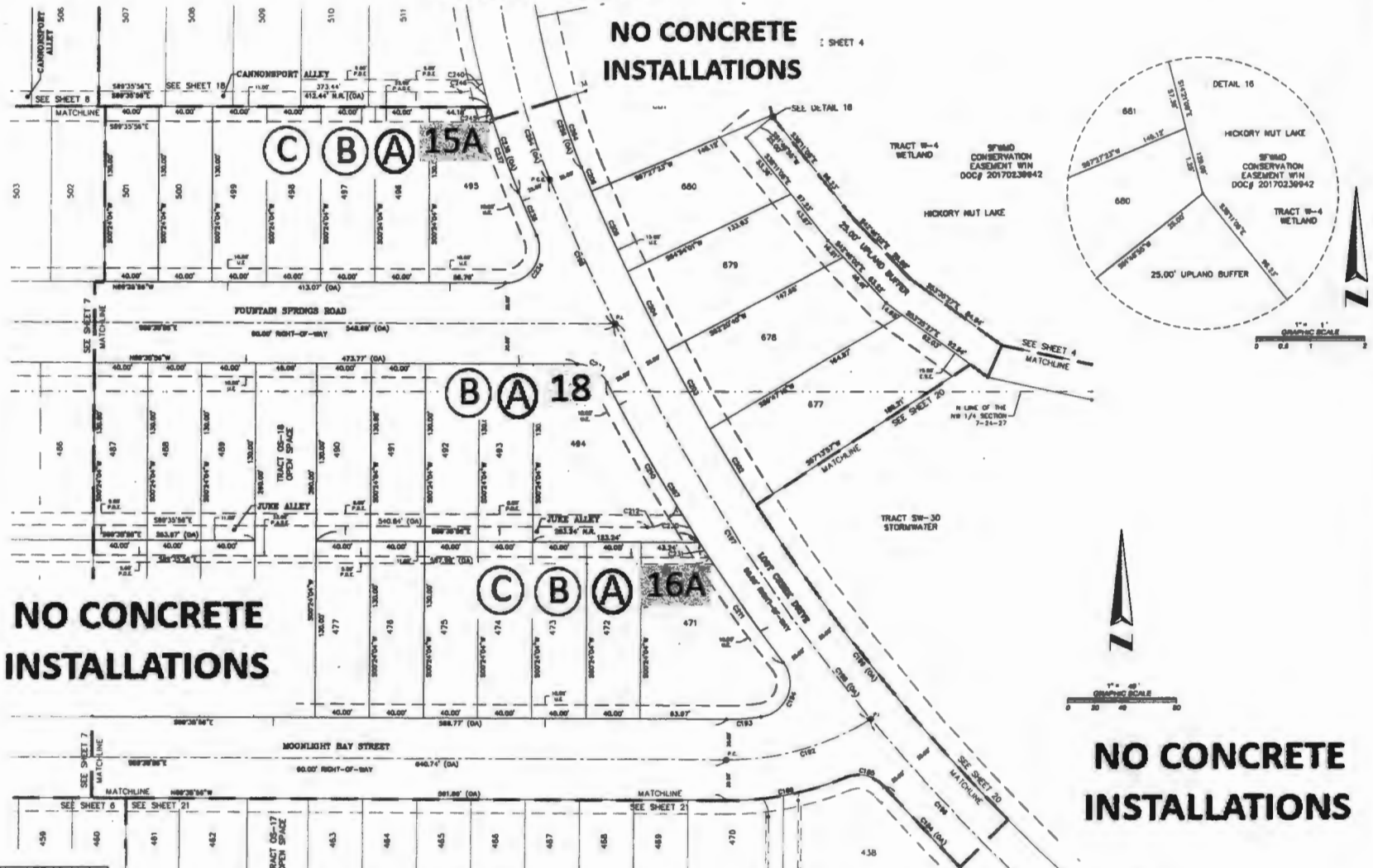
**NO CONCRETE
 INSTALLATIONS**



18 EAST PLANT STREET
 WINTER GARDEN, FLORIDA 34787
 (407) 854-5355

SHEET INDEX
 SHEET 1 TO 2 OF 27 - LEGAL DESCRIPTION, DEDICATION, NOTES, LEGEND, & KEY SHEET
 SHEETS 3 TO 4 OF 27 - BOUNDARY INFORMATION
 SHEETS 5 TO 27 OF 27 - CENTERLINE, TRACT, & LOT BLOCK GEOMETRY

WATERLEIGH PHASES 3B, 3C, AND 3D
 A PORTION OF SECTIONS 6 AND 7, TOWNSHIP 24 SOUTH, RANGE 27 EAST,
 ORANGE COUNTY, FLORIDA



**NO CONCRETE
INSTALLATIONS**

**NO CONCRETE
INSTALLATIONS**

**NO CONCRETE
INSTALLATIONS**



18 EAST PLANT STREET
 WINTER GARDEN, FLORIDA 34787
 (407) 894-5355

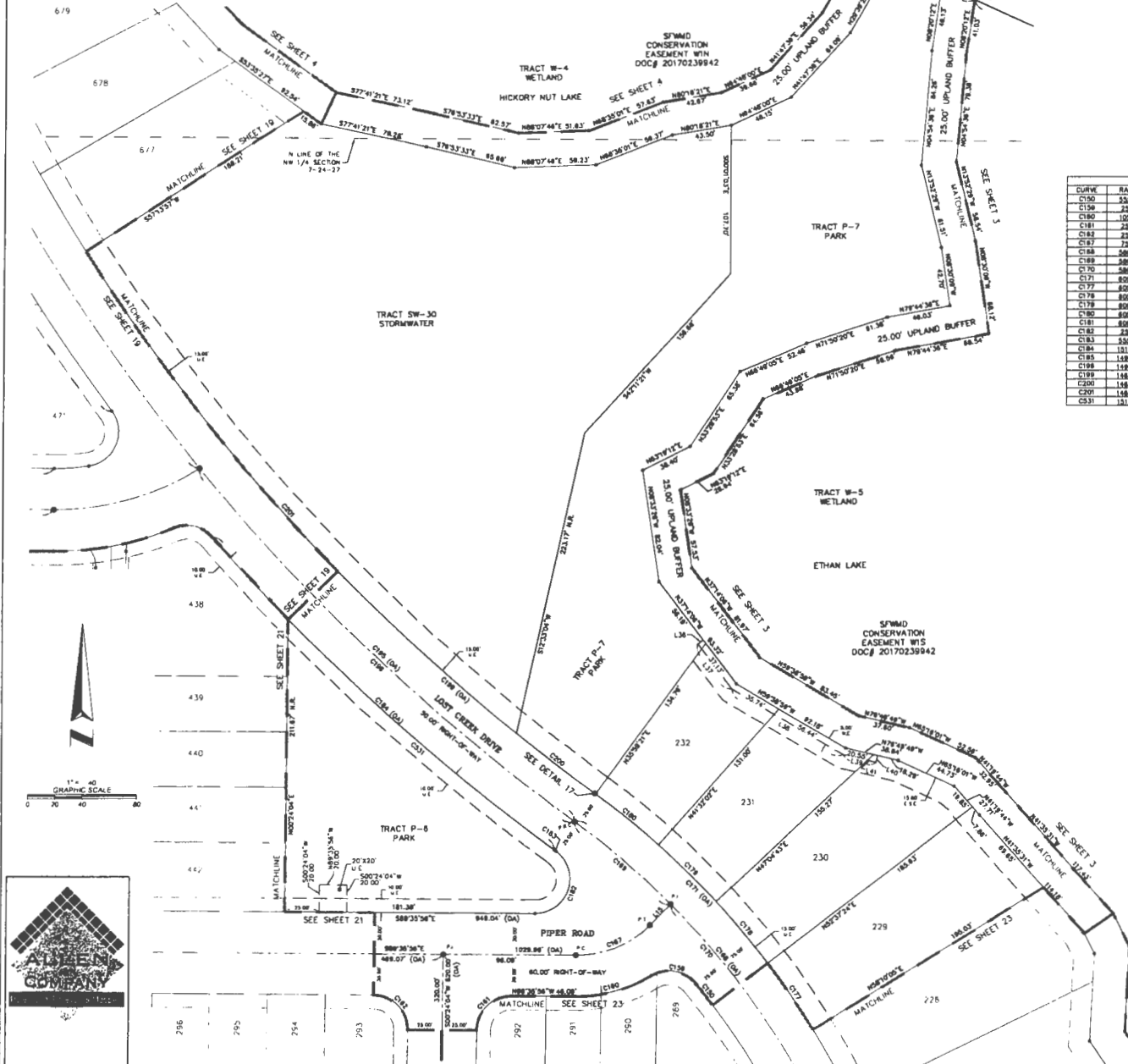
SHEET INDEX
 SHEET 1 TO 2 OF 27 - LEGAL DESCRIPTION, DEDICATION, NOTES, LEGEND, & KEY SHEET
 SHEETS 3 TO 4 OF 27 - BOUNDARY INFORMATION
 SHEETS 5 TO 27 OF 27 - CENTERLINE, TRACT, & LOT BLOCK GEOMETRY

CURVE	RADIUS	CENTRAL ANGLE	ARC LENGTH	CHORD LENGTH	CHORD BEARING
C184	1915.00'	1245.00'	337.46'	338.27'	S47°31'17"E
C185	84.00'	70°46.00'	30.88'	28.88'	N78°52'47"W
C186	2365.00'	22°30.84'	85.56'	86.88'	S79°36'37"E
C187	3004.00'	24°29.14'	115.24'	110.77'	N21°18'28"E
C188	1734.00'	88°38.47'	28.81'	28.48'	S88°38'12"E
C189	28.00'	118°05.84'	51.28'	45.00'	N22°28'00"E
C190	1480.00'	3817.41'	838.84'	808.78'	S37°36'38"E
C191	1480.00'	1428.21'	375.00'	375.00'	S48°31'18"E
C192	1480.00'	1322.93'	241.88'	248.01'	S28°17'27"E
C193	1480.00'	84°50'33"	117.83'	117.83'	S44°50'08"E
C194	1480.00'	3817.41'	826.72'	815.88'	S37°36'38"E
C195	1480.00'	823°22'11"	85.30'	85.30'	S10°29'22"E
C196	1480.00'	80°33'21"	85.30'	85.30'	S28°26'20"E
C197	1480.00'	80°33'21"	85.30'	85.30'	S28°26'20"E
C198	1480.00'	80°33'21"	85.30'	85.30'	S28°26'20"E
C199	1480.00'	80°33'21"	85.30'	85.30'	S28°26'20"E
C200	1480.00'	80°33'21"	85.30'	85.30'	S28°26'20"E
C201	1480.00'	80°33'21"	85.30'	85.30'	S28°26'20"E
C202	1480.00'	80°33'21"	85.30'	85.30'	S28°26'20"E
C203	1480.00'	80°33'21"	85.30'	85.30'	S28°26'20"E
C204	1480.00'	80°33'21"	85.30'	85.30'	S28°26'20"E
C205	1480.00'	80°33'21"	85.30'	85.30'	S28°26'20"E
C206	1480.00'	80°33'21"	85.30'	85.30'	S28°26'20"E
C207	1815.00'	88°12.00'	243.75'	243.48'	S33°15'27"E

CURVE	RADIUS	CENTRAL ANGLE	ARC LENGTH	CHORD LENGTH	CHORD BEARING
C210	1815.00'	88°07.50'	240.71'	240.71'	S30°12'53"E
C211	1815.00'	84°00.00'	198.83'	198.83'	S34°48'28"E
C212	23.00'	70°36.88'	38.89'	28.71'	N67°24'20"E
C213	1815.00'	87°11.31'	21.48'	31.48'	S43°11'07"E
C214	1815.00'	80°28.58'	13.18'	13.18'	S43°30'49"E
C215	25.00'	81°27.00'	22.00'	25.27'	N58°27'20"E
C216	25.00'	113°30'13"	58.53'	41.88'	S43°28'28"E
C217	1815.00'	87°18.50'	25.88'	34.88'	S22°28'28"E
C218	880.00'	15°23.14'	178.83'	178.83'	N12°28'12"E
C219	880.00'	88°32.00'	88.88'	88.88'	S18°30'48"E
C220	23.00'	120°12.18"	3.30'	3.30'	S68°36'48"E
C221	23.00'	45°29.52"	18.17'	17.00'	N67°48'33"E
C222	880.00'	88°32.00'	12.13'	12.13'	S18°28'24"E
C223	880.00'	81°27.00'	18.98'	18.98'	S18°30'48"E
C224	880.00'	30°09.00'	218.84'	218.84'	S11°43'12"E
C225	880.00'	44°48.00'	188.84'	187.00'	S07°28'38"E
C226	880.00'	88°01.00'	58.88'	58.88'	S18°30'48"E

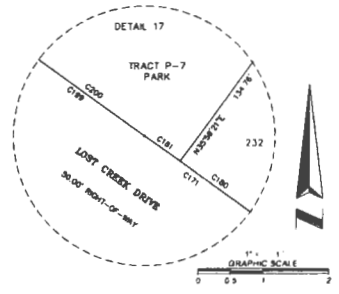
WATERLEIGH PHASES 3B, 3C, AND 3D

A PORTION OF SECTIONS 6 AND 7, TOWNSHIP 24 SOUTH, RANGE 27 EAST,
ORANGE COUNTY, FLORIDA



LINE	BEARING	LENGTH
L15	S45°21'30"E	21.12
L38	N56°51'24"E	4.72
L37	S38°52'07"W	43.21
L36	N58°28'26"W	83.84
L39	S72°48'48"W	24.31
L40	S13°01'11"W	5.00
L41	N78°48'48"W	8.38

CURVE TABLE					
CURVE	RADIUS	CENTRAL ANGLE	ARC DISTANCE	CHORD LENGTH	CHORD BEARING
C150	558.00	127°25'1"	112.06	148.83	S11°36'40"E
C159	25.00	81°25'18"	33.80	32.87	N80°12'48"W
C180	100.00	21°25'29"	37.36	36.87	N74°41'11"E
C181	25.00	80°00'00"	28.27	28.27	S48°52'00"W
C182	25.00	80°00'00"	28.27	28.27	N14°30'24"W
C187	75.00	29°22'24"	28.50	27.86	N87°52'47"E
C188	580.00	87°14'48"	436.83	446.87	S11°27'00"W
C189	580.00	08°38'00"	82.17	82.02	N48°21'30"W
C170	580.00	88°56'54"	383.81	389.47	N83°25'00"W
C171	800.00	85°14'48"	472.77	486.82	S11°27'00"W
C177	800.00	08°24'41"	58.85	58.53	N48°28'18"W
C178	800.00	08°24'41"	58.85	58.53	N80°58'47"W
C179	800.00	08°24'41"	58.85	58.53	N45°01'31"W
C180	800.00	08°24'41"	58.85	58.53	N61°14'18"W
C181	800.00	08°24'41"	58.85	58.53	N81°58'24"W
C182	800.00	08°24'41"	58.85	58.53	N11°51'20"W
C183	558.00	200°20'4"	1.87	1.87	N63°28'27"W
C184	1118.00	32°45'54"	337.08	338.77	N42°41'37"E
C185	1480.00	32°17'41"	839.84	828.78	S17°54'56"E
C188	1480.00	147°8'21"	375.92	375.92	S48°21'18"E
C189	1480.00	32°17'41"	839.84	818.88	S17°20'21"E
C200	1480.00	02°48'48"	71.82	71.81	S82°40'00"E
C201	1480.00	187°2'50"	472.88	470.84	S42°50'52"E
C231	1315.00	08°40'20"	254.72	254.44	S48°14'12"E



18 EAST PLANT STREET
WINTER GARDEN, FLORIDA 34787
(407) 854-5355

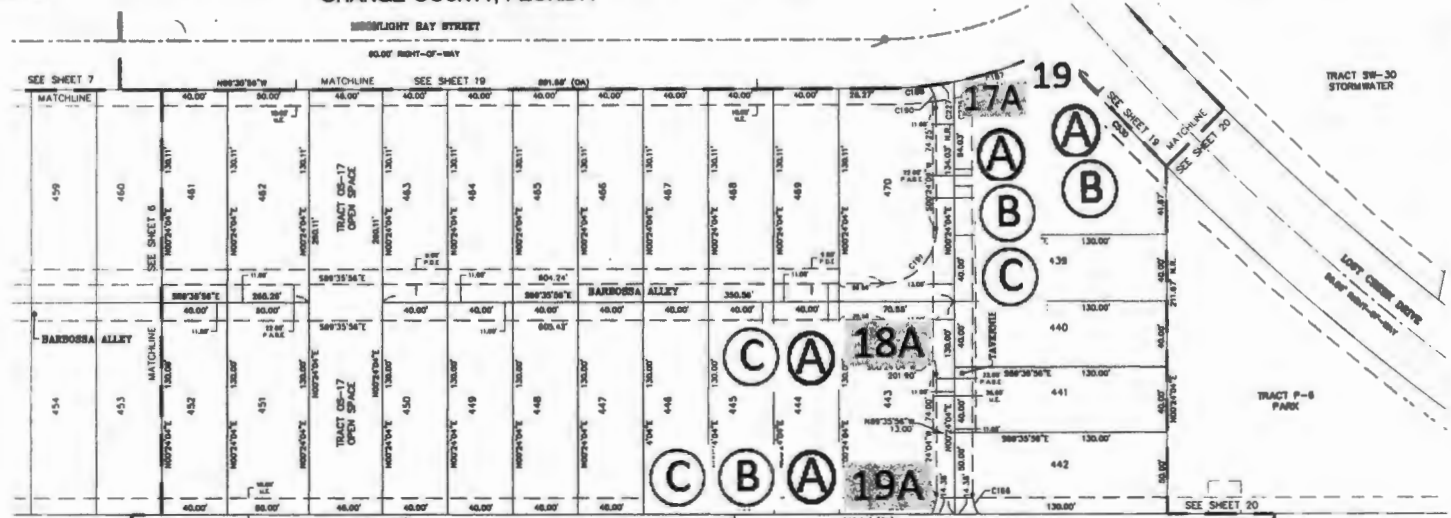
SHEET INDEX
SHEETS 1 TO 3 OF 27 - LEGAL DESCRIPTION, DEDICATION, NOTES, LEGEND, & KEY SHEET
SHEETS 3 TO 4 OF 27 - BOUNDARY INFORMATION
SHEETS 5 TO 27 OF 27 - CENTERLINE, TRACT, & LOT BLOCK GEOMETRY

**NO CONCRETE
INSTALLATIONS**

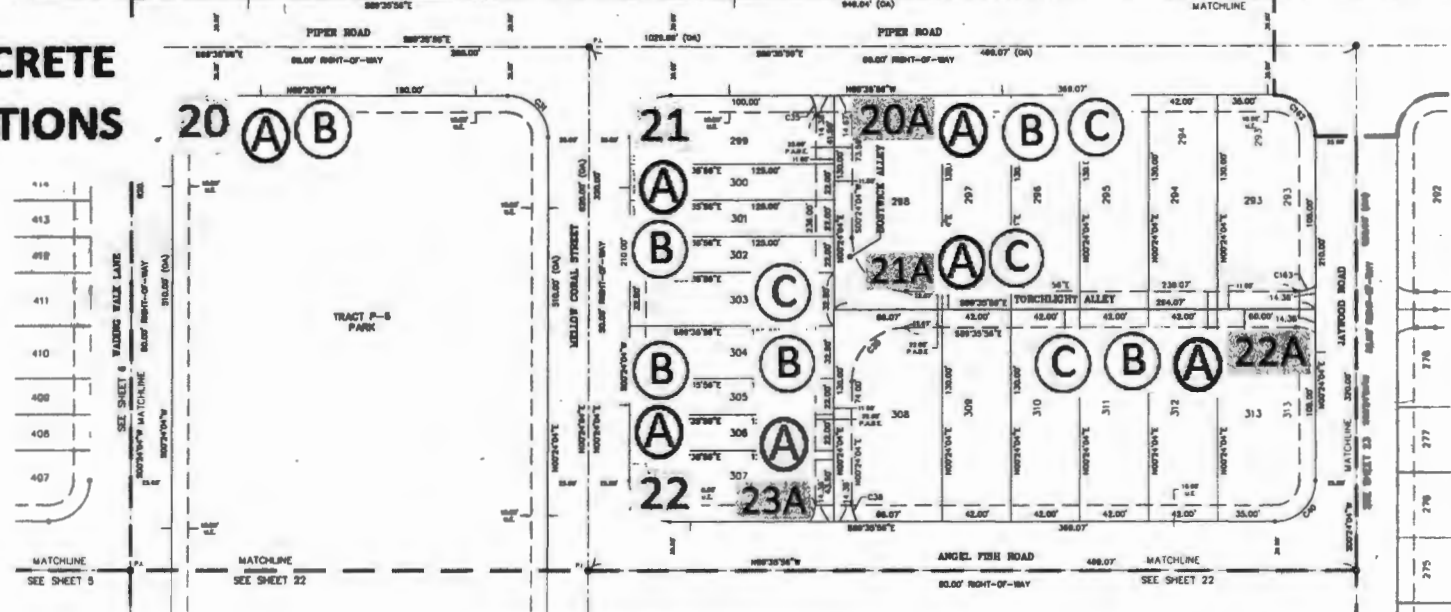
WATERLEIGH PHASES 3B, 3C, AND 3D
A PORTION OF SECTIONS 6 AND 7, TOWNSHIP 24 SOUTH, RANGE 27 EAST,
ORANGE COUNTY, FLORIDA

PLAT BOOK _____ PAGE _____

SHEET 21 OF 27



**NO CONCRETE
INSTALLATIONS**



16 EAST PLANT STREET
WINTER GARDEN, FLORIDA 34787
(407) 834-5355

SHEET INDEX
SHEET 1 TO 2 OF 27 - LEGAL DESCRIPTION, DEDICATION, NOTES, LEGEND, & KEY SHEET
SHEETS 3 TO 4 OF 27 - BOUNDARY INFORMATION
SHEETS 5 TO 27 OF 27 - CENTERLINE, TRACT, & LOT BLOCK GEOMETRY

CURVE	RADIUS	CENTRAL ANGLE	ARC DISTANCE	CHORD LENGTH	CHORD BEARING
C10	28.00'	80°00'00"	38.27'	38.38'	S45°24'00"W
C11	28.00'	80°00'00"	38.27'	38.38'	S45°24'00"W
C12	28.00'	80°00'00"	38.27'	38.38'	S45°24'00"W
C13	33.00'	80°00'00"	44.84'	44.87'	S44°30'30"W
C14	33.00'	31°28'24"	12.62'	12.47'	S15°07'24"E
C15	33.00'	31°28'24"	12.62'	12.47'	N15°12'24"W
C16	28.00'	80°00'00"	38.27'	38.38'	S45°24'00"W
C17	28.00'	31°28'24"	12.62'	12.47'	N15°07'24"E
C18	33.00'	31°28'24"	12.62'	12.47'	S15°12'24"W
C19	33.00'	80°00'00"	44.84'	44.87'	S44°30'30"W
C20	28.00'	80°00'00"	38.27'	38.38'	S45°24'00"W
C21	33.00'	31°28'24"	12.62'	12.47'	N15°07'24"E
C22	28.00'	80°00'00"	38.27'	38.38'	S45°24'00"W

**NO CONCRETE
INSTALLATIONS**

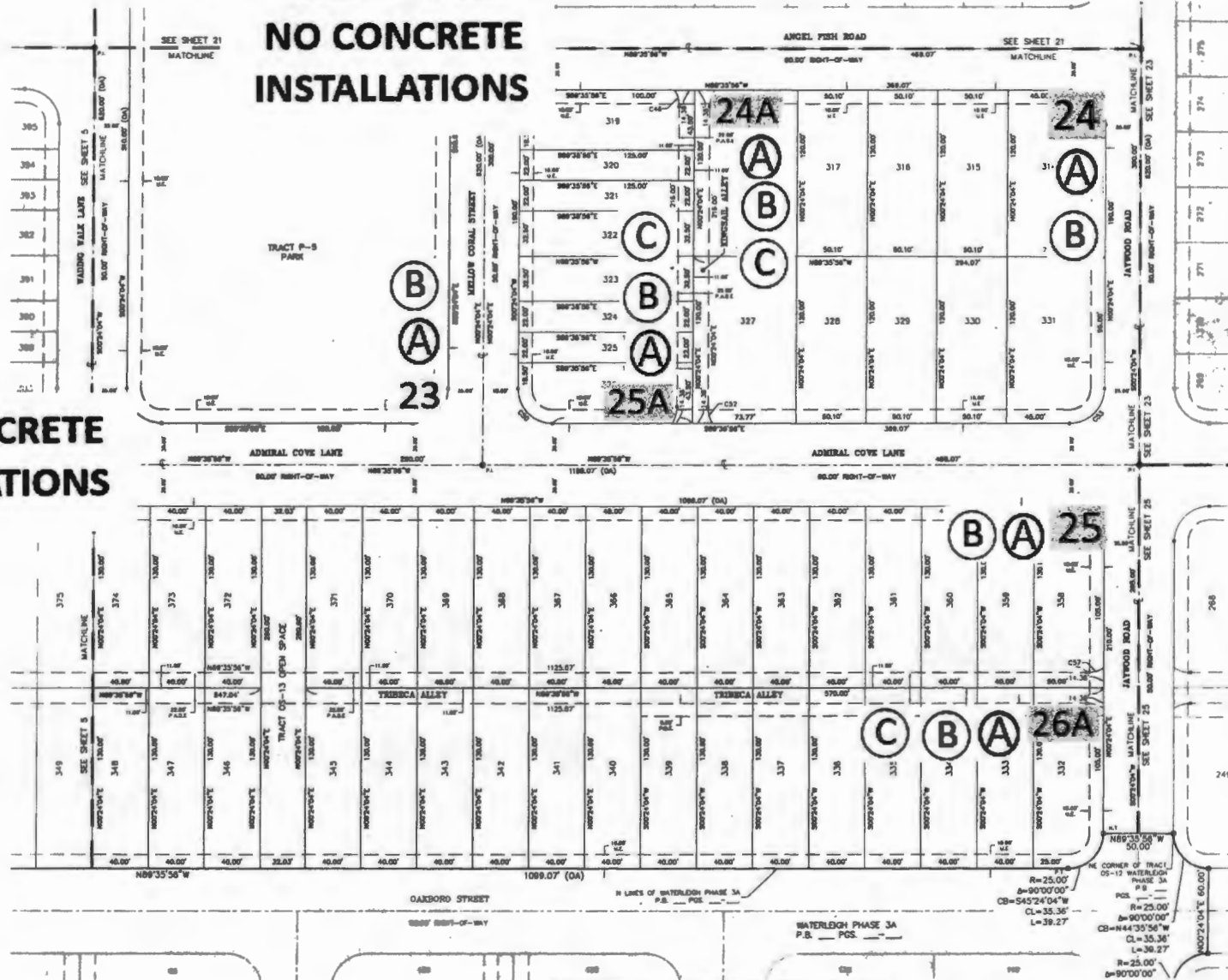
WATERLEIGH PHASES 3B, 3C, AND 3D
 A PORTION OF SECTIONS 6 AND 7, TOWNSHIP 24 SOUTH, RANGE 27 EAST,
 ORANGE COUNTY, FLORIDA



**NO CONCRETE
 INSTALLATIONS**

**NO CONCRETE
 INSTALLATIONS**

**NO CONCRETE
 INSTALLATIONS**



18 EAST PLANT STREET
 WINTER GARDEN, FLORIDA 34787
 (407) 894-5355

SHEET INDEX
 SHEET 1 TO 2 OF 27 - LEGAL DESCRIPTION, DEDICATION, NOTES, LEGEND, & KEY SHEET
 SHEETS 3 TO 4 OF 27 - BOUNDARY INFORMATION
 SHEETS 5 TO 27 OF 27 - CENTERLINE, TRACT, & LOT BLOCK GEOMETRY

CURVE	RADIUS	CENTRAL ANGLE	ARC DISTANCE	CHORD LENGTH	CHORD BEARING
C44	25.00'	80°00'00"	39.27'	35.38'	S45°38'26"W
C45	23.00'	31°28'36"	12.82'	12.47'	S18°07'37"W
C46	23.00'	31°28'36"	12.82'	12.47'	S15°12'33"W
C47	23.00'	80°00'00"	39.27'	35.38'	S45°24'04"W
C48	23.00'	80°00'00"	39.27'	35.38'	S44°38'58"W
C49	23.00'	80°00'00"	39.27'	35.38'	S45°24'04"W
C50	23.00'	80°00'00"	39.27'	35.38'	S45°26'26"W
C51	23.00'	31°28'36"	12.82'	12.47'	S18°07'37"W
C52	23.00'	31°28'36"	12.82'	12.47'	S15°12'33"W
C53	23.00'	80°00'00"	39.27'	35.38'	S45°24'04"W
C54	23.00'	80°00'00"	39.27'	35.38'	S45°26'26"W
C55	23.00'	31°28'36"	12.82'	12.47'	S18°07'37"W
C56	23.00'	31°28'36"	12.82'	12.47'	S15°12'33"W

WATERLEIGH PHASES 3B, 3C, AND 3D
 A PORTION OF SECTIONS 6 AND 7, TOWNSHIP 24 SOUTH, RANGE 27 EAST,
 ORANGE COUNTY, FLORIDA

**NO CONCRETE
 INSTALLATIONS**

CURVE	RADIUS	CENTRAL ANGLE	ARC DISTANCE	CHORD LENGTH	CHORD BEARING
C42	23.00'	3128.66°	12.62'	12.57'	S74°50'36"W
C43	23.00'	8227.67°	53.27'	47.67'	N45°26'50"W
C44	23.00'	8000.00°	38.27'	33.86'	S44°36'50"W
C45	23.00'	3128.66°	12.62'	12.57'	N18°57'34"E
C46	200.00'	6827.24°	29.30'	29.30'	N81°21'00"W
C47	200.00'	4327.24°	68.81'	68.81'	N41°51'30"W
C48	500.00'	4427.24°	500.00'	488.84'	N41°51'30"W
C103	828.50'	6227.30°	35.89'	35.89'	N81°21'00"W
C104	273.50'	6143.44°	22.39'	22.39'	S88°24'34"E
C105	273.50'	1131.18°	58.98'	58.98'	S81°38'17"E
C106	273.50'	1131.18°	58.98'	58.98'	N81°21'00"W
C107	273.50'	1131.18°	58.97'	58.97'	S77°19'00"E
C108	383.00'	6330.24°	371.81'	368.23'	S38°57'38"E
C109	483.00'	5336.34°	385.34'	388.81'	S38°57'38"E
C110	483.00'	3027.34°	273.50'	271.62'	S88°24'34"E
C111	383.00'	6227.34°	383.00'	383.00'	S88°24'34"E
C112	383.00'	6227.34°	383.00'	383.00'	S88°24'34"E
C113	383.00'	1131.18°	81.72'	81.58'	S31°18'10"E
C114	383.00'	1131.18°	81.72'	81.58'	S31°18'10"E
C115	383.00'	1131.18°	81.72'	81.58'	S27°24'54"E
C116	383.00'	627.24°	71.00'	70.80'	S81°10'00"E
C117	383.00'	627.24°	18.14'	18.14'	S88°54'00"E
C118	430.00'	4407.47°	353.48'	318.58'	S38°24'30"E
C119	430.00'	4407.47°	353.48'	318.58'	S38°24'30"E
C120	24.00'	3128.66°	12.62'	12.57'	S18°24'30"E
C121	24.00'	3128.66°	12.62'	12.57'	S18°24'30"E
C122	24.00'	3128.66°	12.62'	12.57'	S18°24'30"E
C123	24.00'	3128.66°	12.62'	12.57'	S18°24'30"E
C124	24.00'	3128.66°	12.62'	12.57'	S18°24'30"E
C125	24.00'	3128.66°	12.62'	12.57'	S18°24'30"E
C126	24.00'	3128.66°	12.62'	12.57'	S18°24'30"E
C127	24.00'	3128.66°	12.62'	12.57'	S18°24'30"E
C128	24.00'	3128.66°	12.62'	12.57'	S18°24'30"E
C129	24.00'	3128.66°	12.62'	12.57'	S18°24'30"E
C130	24.00'	3128.66°	12.62'	12.57'	S18°24'30"E
C131	24.00'	3128.66°	12.62'	12.57'	S18°24'30"E
C132	24.00'	3128.66°	12.62'	12.57'	S18°24'30"E
C133	24.00'	3128.66°	12.62'	12.57'	S18°24'30"E
C134	24.00'	3128.66°	12.62'	12.57'	S18°24'30"E
C135	24.00'	3128.66°	12.62'	12.57'	S18°24'30"E
C136	24.00'	3128.66°	12.62'	12.57'	S18°24'30"E
C137	24.00'	3128.66°	12.62'	12.57'	S18°24'30"E
C138	24.00'	3128.66°	12.62'	12.57'	S18°24'30"E
C139	24.00'	3128.66°	12.62'	12.57'	S18°24'30"E
C140	24.00'	3128.66°	12.62'	12.57'	S18°24'30"E
C141	24.00'	3128.66°	12.62'	12.57'	S18°24'30"E
C142	24.00'	3128.66°	12.62'	12.57'	S18°24'30"E
C143	24.00'	3128.66°	12.62'	12.57'	S18°24'30"E
C144	24.00'	3128.66°	12.62'	12.57'	S18°24'30"E
C145	24.00'	3128.66°	12.62'	12.57'	S18°24'30"E
C146	24.00'	3128.66°	12.62'	12.57'	S18°24'30"E
C147	24.00'	3128.66°	12.62'	12.57'	S18°24'30"E
C148	24.00'	3128.66°	12.62'	12.57'	S18°24'30"E
C149	24.00'	3128.66°	12.62'	12.57'	S18°24'30"E
C150	24.00'	3128.66°	12.62'	12.57'	S18°24'30"E
C151	24.00'	3128.66°	12.62'	12.57'	S18°24'30"E
C152	24.00'	3128.66°	12.62'	12.57'	S18°24'30"E
C153	24.00'	3128.66°	12.62'	12.57'	S18°24'30"E
C154	24.00'	3128.66°	12.62'	12.57'	S18°24'30"E
C155	24.00'	3128.66°	12.62'	12.57'	S18°24'30"E

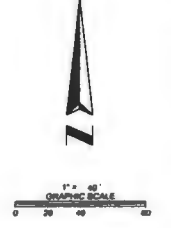
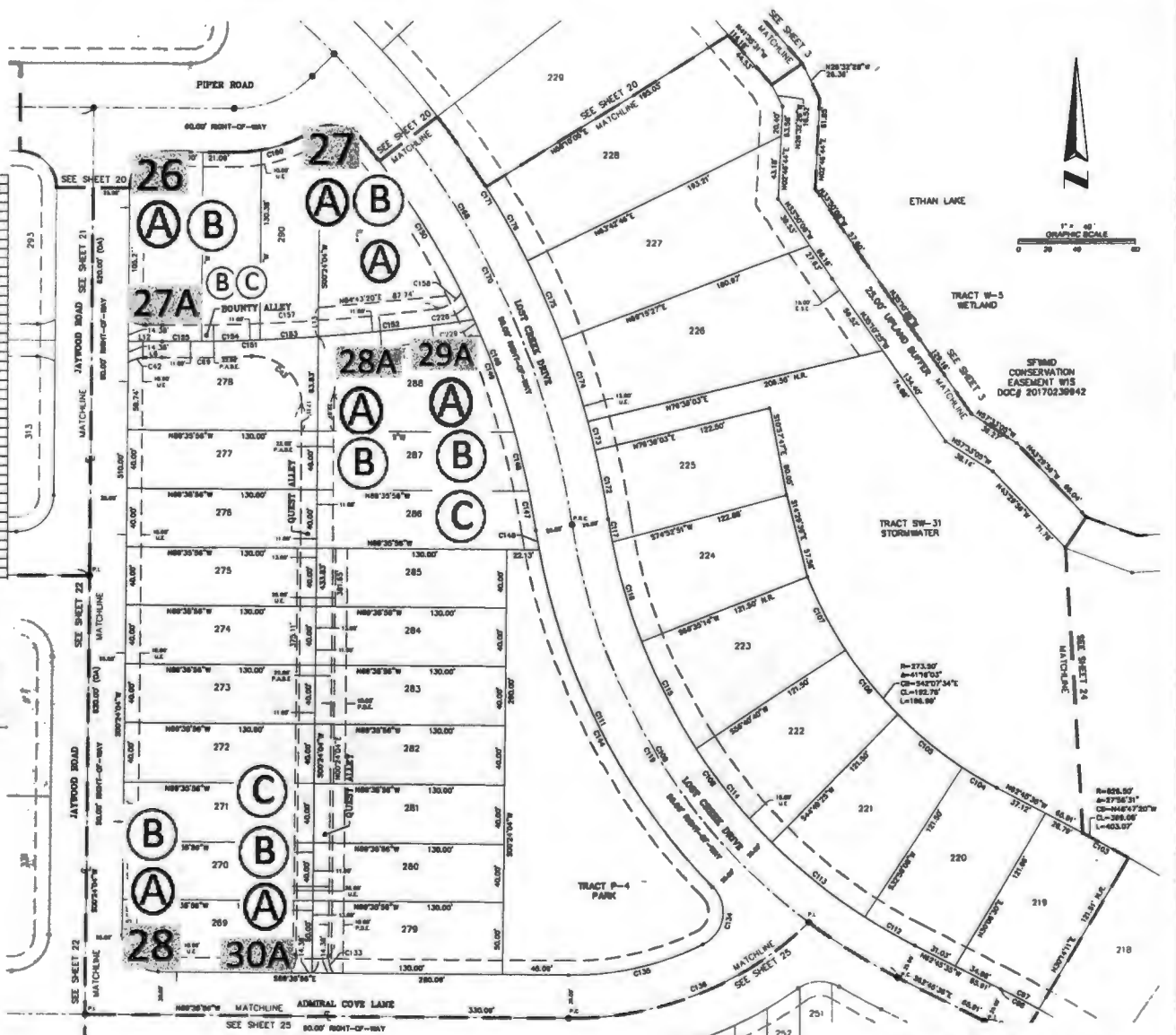
**NO CONCRETE
 INSTALLATIONS**

LINE	BEARING	LENGTH
L32	N88°24'34"E	23.80'
L33	S88°24'34"E	19.80'
L34	S88°24'34"E	11.00'



18 EAST PLANT STREET
 WINTER GARDEN, FLORIDA 34787
 (407) 854-8358

SHEET INDEX
 SHEET 1 TO 2 OF 27 - LEGAL DESCRIPTION, DEDICATION, NOTES, LEGEND, & KEY SHEET
 SHEETS 3 TO 4 OF 27 - BOUNDARY INFORMATION
 SHEETS 5 TO 27 OF 27 - CENTERLINE, TRACT, & LOT BLOCK GEOMETRY



**NO CONCRETE
 INSTALLATIONS**

WATERLEIGH PHASES 3B, 3C, AND 3D

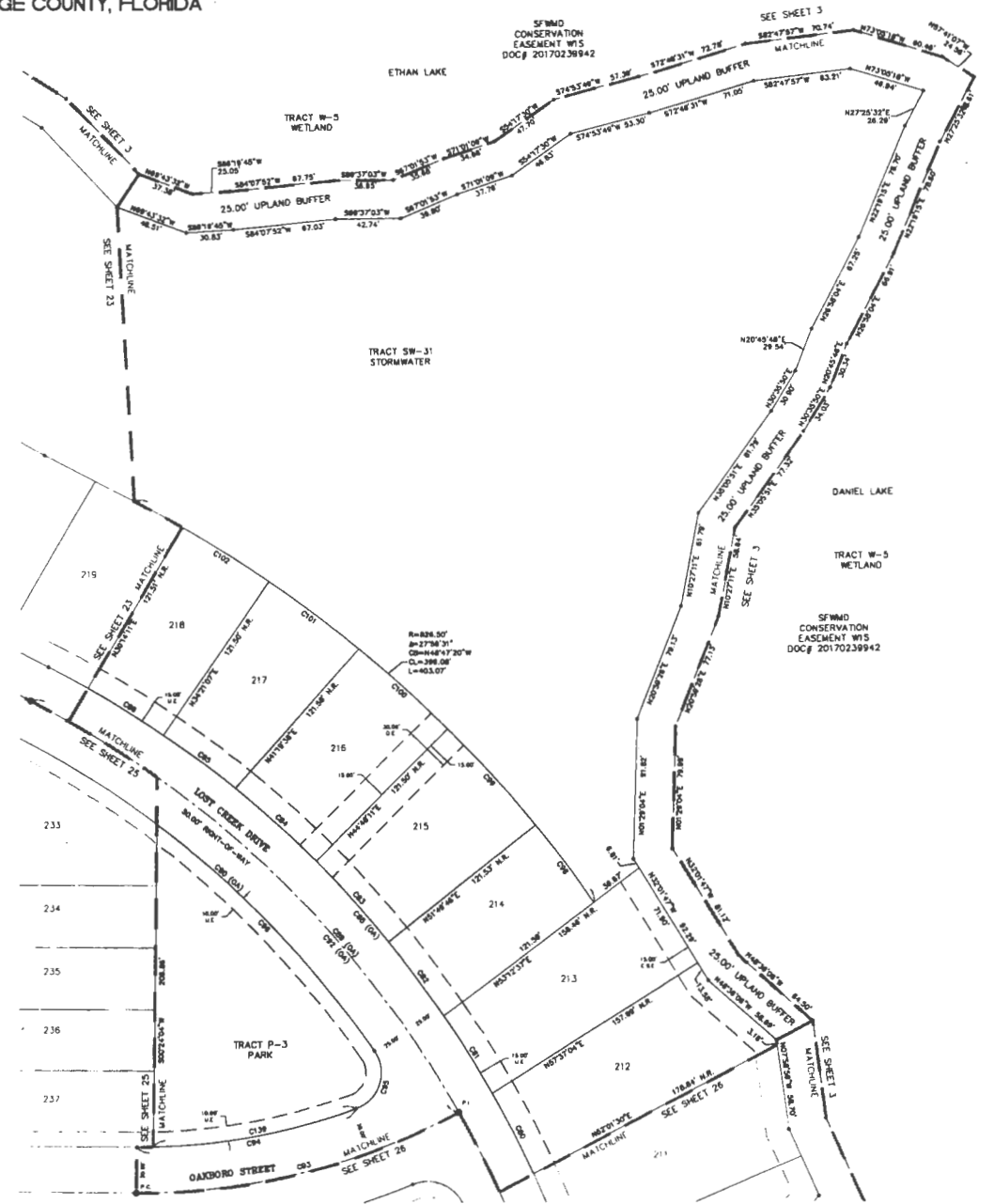
A PORTION OF SECTIONS 6 AND 7, TOWNSHIP 24 SOUTH, RANGE 27 EAST,
ORANGE COUNTY, FLORIDA

PLAT BOOK _____ PAGE _____

SHEET 24 OF 27



CURVE TABLE					
CURVE	RADIUS	CENTRAL ANGLE	ARC DISTANCE	CHORD LENGTH	CHORD BEARING
C00	708.00'	04°36'20"	56.84'	58.82'	N52°23'28"W
C01	708.00'	04°31'38"	56.25'	58.77'	N52°02'17"W
C02	708.00'	04°34'34"	56.00'	58.88'	N50°58'13"W
C03	708.00'	08°52'31"	70.30'	78.66'	N45°12'42"W
C04	708.00'	09°46'38"	71.08'	71.00'	N43°26'40"W
C05	708.00'	04°48'21"	58.72'	58.71'	N53°15'09"W
C06	708.00'	04°44'22"	58.30'	58.20'	N55°05'30"W
C07	708.00'	42°02'54"	518.41'	508.81'	N41°51'38"W
C08	880.00'	42°02'54"	500.00'	498.84'	N41°51'38"W
C09	855.00'	27°49'48"	318.84'	213.37'	N44°20'11"W
C10	880.00'	33°08'43"	383.38'	382.91'	N46°11'13"W
C11	430.00'	28°49'24"	218.71'	218.41'	N72°28'20"E
C12	400.00'	20°27'08"	159.72'	154.88'	N80°05'30"E
C13	23.00'	104°31'42"	48.23'	38.83'	N172°10'47"
C14	850.00'	17°38'28"	200.88'	204.82'	N44°36'28"W
C15	828.00'	04°21'37"	88.88'	82.88'	N53°00'03"W
C16	828.00'	02°52'17"	85.42'	85.36'	N53°06'40"W
C17	808.00'	02°28'18"	78.40'	78.42'	N52°58'38"W
C18	808.00'	08°00'57"	73.82'	73.68'	N53°08'31"W
C19	828.00'	04°28'34"	87.04'	87.02'	N53°37'30"W
C20	505.00'	18°38'28"	135.97'	134.94'	N72°28'10"E



18 EAST PLANT STREET
WINTER GARDEN, FLORIDA 34787
(407) 854-5355

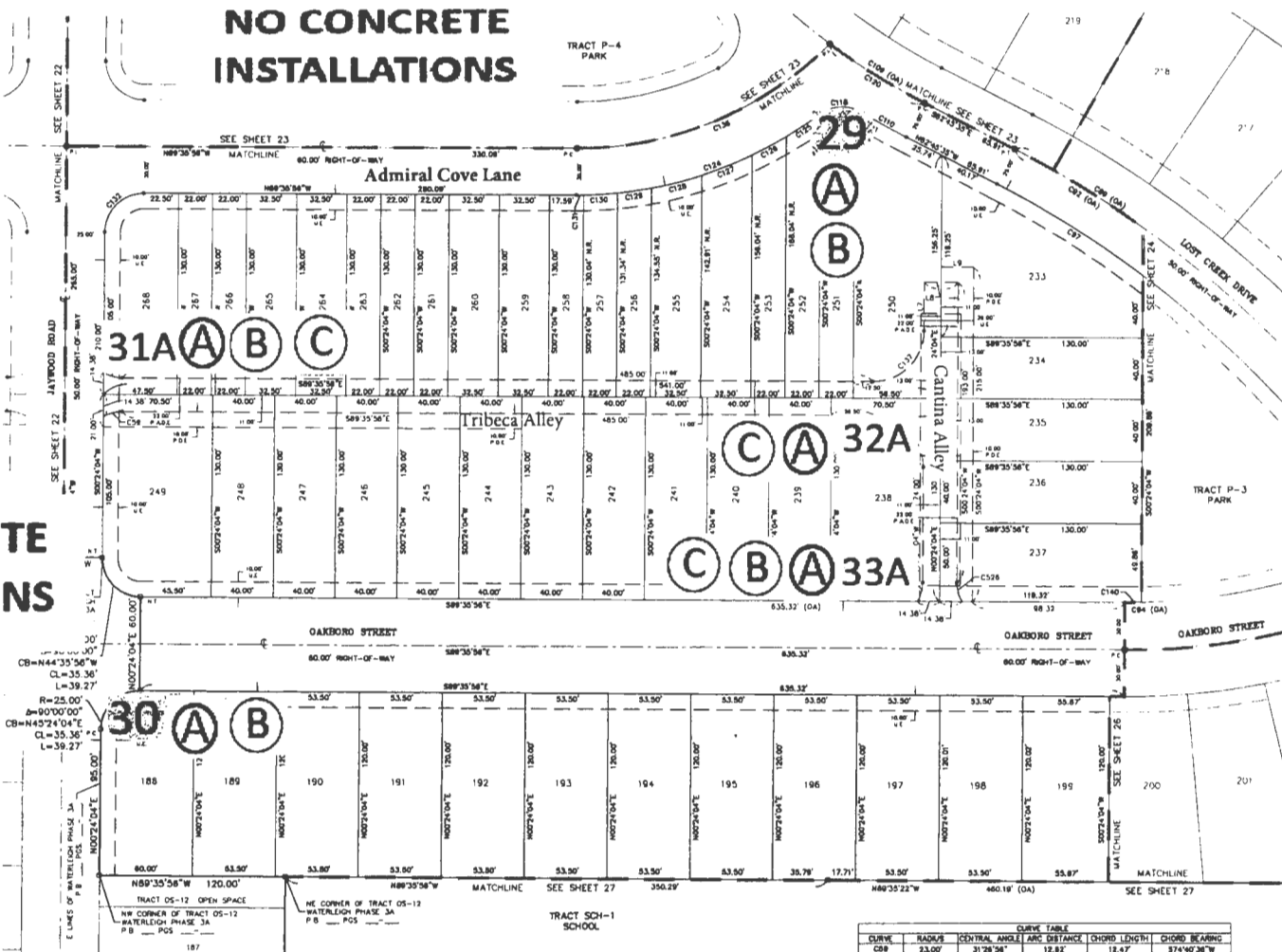
SHEET INDEX
SHEET 1 TO 2 OF 27 - LEGAL DESCRIPTION, DEDICATION, NOTES, LEGEND, & KEY SHEET
SHEETS 3 TO 4 OF 27 - BOUNDARY INFORMATION
SHEETS 5 TO 27 OF 27 - CENTERLINE, TRACT, & LOT BLOCK GEOMETRY

WATERLEIGH PHASES 3B, 3C, AND 3D
 A PORTION OF SECTIONS 6 AND 7, TOWNSHIP 24 SOUTH, RANGE 27 EAST,
 ORANGE COUNTY, FLORIDA

**NO CONCRETE
 INSTALLATIONS**

**NO CONCRETE
 INSTALLATIONS**

**NO CONCRETE
 INSTALLATIONS**



LINE TABLE

LINE	BEARING	LENGTH
L7	S00°24'04"W	31.00'
L8	S89°35'56"E	23.00'
L9	S89°35'56"E	21.00'

CURVE TABLE

CURVE	RADIUS	CENTRAL ANGLE	ARC DISTANCE	CHORD LENGTH	CHORD BEARING
CB#	33.00'	21.28.26"	12.82'	12.47'	S74°40'36"W
CB0	33.00'	80°00'00"	31.85'	36.87'	S44°28'36"W
CB1	24.00'	31°28'26"	12.82'	12.47'	N18°07'32"E
CB#	880.00'	42°07'54"	569.04'	488.84'	N11°41'36"W
CB2	880.00'	33°06'43"	383.88'	387.81'	S68°11'12"W
CB4	408.00'	20°27'09"	154.75'	154.88'	N80°04'30"E
CB7	854.00'	09°51'24"	119.78'	119.84'	N87°34'54"E
CB8	428.00'	53°30'24"	353.24'	360.81'	S35°17'36"E
CB10	448.00'	04°12'58"	33.74'	33.74'	S80°28'08"E
CB18	23.00'	88°10'33"	23.88'	27.87'	S87°28'36"W
CB19	128.00'	08°48'03"	71.88'	71.78'	S82°31'12"E
CB21	25.00'	123°24'21"	5.40'	5.40'	N84°14'58"E

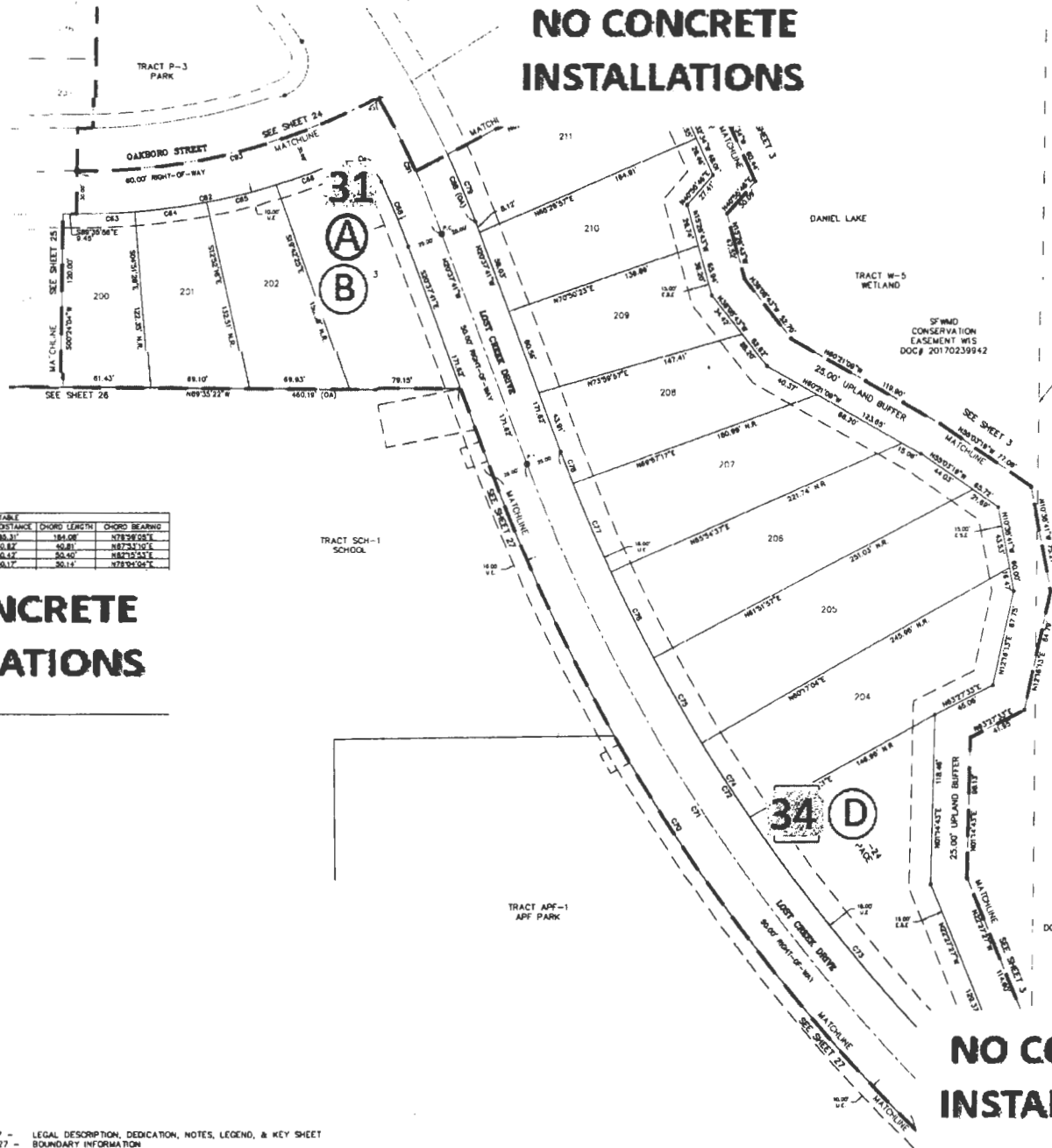


18 EAST PLANT STREET
 WINTER GARDEN, FLORIDA 34787
 (407) 654-5355

SHEET INDEX
 SHEET 1 TO 2 OF 27 - LEGAL DESCRIPTION, DEDICATION, NOTES, LEGEND, & KEY SHEET
 SHEETS 3 TO 4 OF 27 - BOUNDARY INFORMATION
 SHEETS 5 TO 27 OF 27 - CENTERLINE, TRACT, & LOT BLOCK GEOMETRY

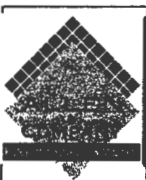
WATERLEIGH PHASES 3B, 3C, AND 3D
 A PORTION OF SECTIONS 6 AND 7, TOWNSHIP 24 SOUTH, RANGE 27 EAST,
 ORANGE COUNTY, FLORIDA

**NO CONCRETE
 INSTALLATIONS**



CURVE TABLE				
CURV	RADIUS	CENTRAL ANGLE	ARC DISTANCE	CHORD BEARING
CS1	448.00'	22.9124°	184.31'	184.08'
CS2	428.00'	20.3154°	161.82'	161.23°
CS3	448.00'	20.1244°	161.12'	160.40°
CS4	448.00'	20.1024°	161.17'	160.00°

**NO CONCRETE
 INSTALLATIONS**

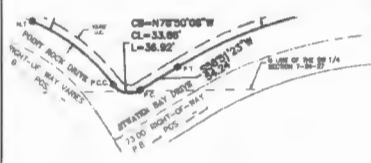
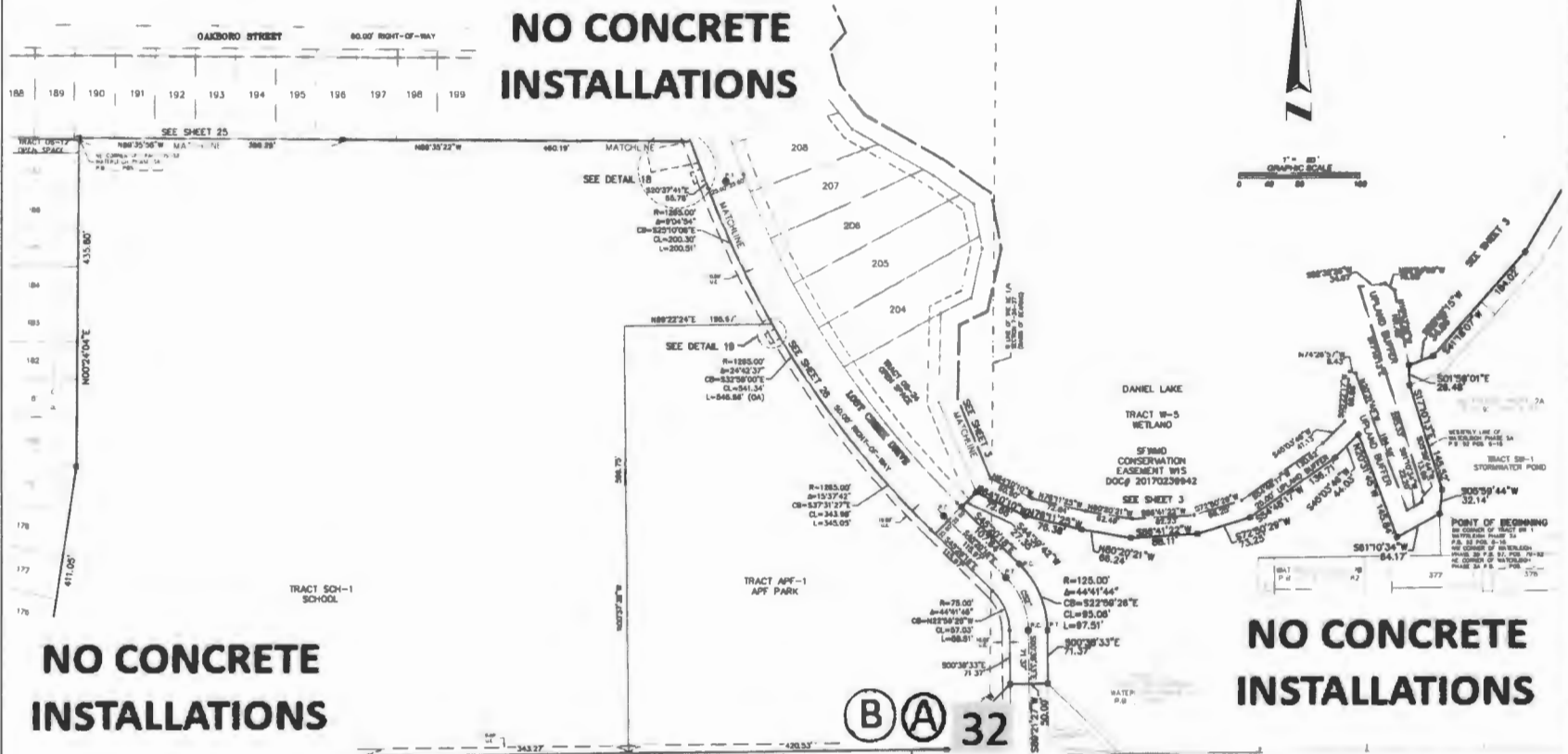


16 EAST PLANT STREET
 WINTER GARDEN, FLORIDA 34787
 (407) 834-3355

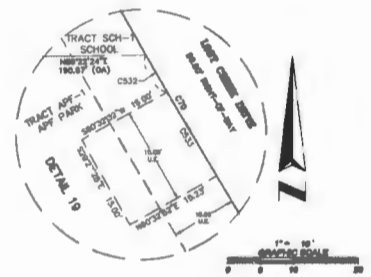
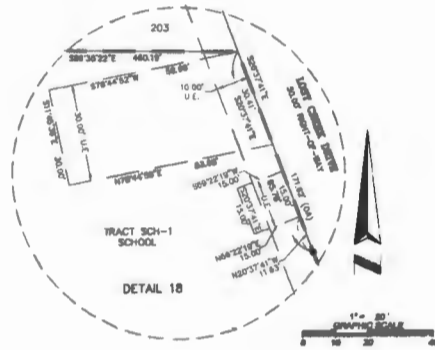
SHEET INDEX
 SHEET 1 TO 2 OF 27 - LEGAL DESCRIPTION, DEDICATION, NOTES, LEGEND, & KEY SHEET
 SHEETS 3 TO 4 OF 27 - BOUNDARY INFORMATION
 SHEETS 5 TO 27 OF 27 - CENTERLINE, TRACT, & LOT BLOCK GEOMETRY

**NO CONCRETE
 INSTALLATIONS**

WATERLEIGH PHASES 3B, 3C, AND 3D
 A PORTION OF SECTIONS 6 AND 7, TOWNSHIP 24 SOUTH, RANGE 27 EAST,
 ORANGE COUNTY, FLORIDA



CURVE TABLE					
CURVE	RADIUS	CENTRAL ANGLE	ARC DISTANCE	CHORD LENGTH	CHORD BEARING
CS19	1285.00'	28°52'37"	548.67'	561.34'	S28°52'37"W
CS22	1885.00'	44°51'44"	78.60'	78.60'	S44°51'44"W
CS32	1285.00'	07°37'42"	8.50'	8.50'	S07°37'42"W
CS33	1285.00'	07°37'42"	18.00'	18.00'	S07°37'42"W



16 EAST PLANT STREET
 WINTER GARDEN, FLORIDA 34787
 (407) 854-5355

SHEET INDEX
 SHEET 1 TO 2 OF 27 - LEGAL DESCRIPTION, DEDICATION, NOTES, LEGEND, & KEY SHEET
 SHEETS 3 TO 4 OF 27 - BOUNDARY INFORMATION
 SHEETS 5 TO 27 OF 27 - CENTERLINE, TRACT, & LOT BLOCK GEOMETRY