



**Interoffice Memorandum**

November 2, 2020

**TO:** Mayor Jerry L. Demings  
and Board of County Commissioners

**FROM:** Joseph C. Kunkel, P.E., Director, Public Works Department

**CONTACT PERSON:** Humberto L. Castillero, P.E., PTOE, Manager  
Traffic Engineering Division

**PHONE NUMBER:** (407) 836-7891

**SUBJ:** Installation of Traffic Control Devices and "No Parking" signs in  
Hawksmoor Phase 4

Our staff recommends installing the following traffic control devices in Hawksmoor:

Install "STOP" signs on:  
Taliesin Street (WB) at Wingspread Loop  
Wingspread Loop (NB) at Taliesin Street

The Fire Marshal recommends installing the following "No Parking" signs in Hawksmoor:

Install "NO PARKING" signs on:  
Wingspread Loop  
Taliesin Street

**Action Requested:** Approval of Traffic Control Devices and "No Parking" signs  
installation in Hawksmoor Phase 4. District 1.

JCK/HLC/FCY/dar

Attachments

# HAWKSMOOR

A REPLAT TRACT FD-3 HAWKSMOOR-PHASE 1, AS RECORDED IN PLAT BOOK 102, PAGES 67 THROUGH 74 OF THE PUBLIC RECORDS OF ORANGE COUNTY, FLORIDA AND LYING IN SECTION 31, TOWNSHIP 23 SOUTH, RANGE 27 EAST, ORANGE COUNTY, FLORIDA  
DISTRICT # 1

STOP/STREET			INITIALS
<u>(1)</u>	(Ft _____ E)	on Taliesin Street	16400 _____
		at Wingspread Loop	16800 _____
<u>(2)</u>	(Ft _____ S)	on Wingspread Loop	17100 _____
		at Taliesin Street	16300 _____

## NO PARKING with arrows

On Taliesin Street from Wingspread Loop on the west to Wingspread Loop on the east, on both sides of the roadway as indicated on the attached parking plan.

On Wingspread Loop from approximately 1300 feet south of Taliesin Street to approximately 100 feet west of Olive Hill Drive, on both sides of the roadway as indicated on the attached parking plan.

11/2/2020

ahw/

# HAWKSMOOR PHASE 4

SHEET 1 OF 8

PLAT BOOK 102 PAGE 67

A REPLAT OF TRACT FD-3 HAWKSMOOR - PHASE 1 AS RECORDED IN PLAT BOOK 93, PAGES 108 THROUGH 121 OF THE PUBLIC RECORDS OF ORANGE COUNTY, FLORIDA, LYING IN SECTION 31, TOWNSHIP 23 SOUTH, RANGE 27 EAST, ORANGE COUNTY, FLORIDA

### LEGAL DESCRIPTION:

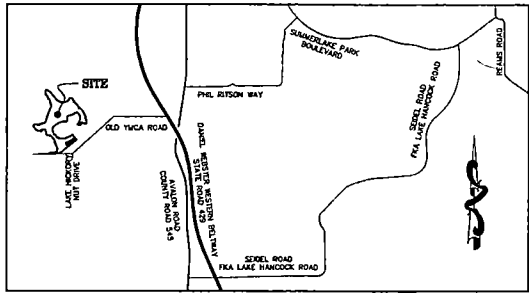
TRACT FD-3, HAWKSMOOR - PHASE 1, AS RECORDED IN PLAT BOOK 93, PAGES 108 THROUGH 121 OF THE PUBLIC RECORDS OF ORANGE COUNTY FLORIDA, LYING IN SECTION 31, TOWNSHIP 23 SOUTH, RANGE 27 EAST, ORANGE COUNTY, FLORIDA.

BEING MORE PARTICULARLY DESCRIBED AS FOLLOWS: (PHASE 4)

COMMENCING AT THE SOUTHWEST CORNER OF SAID SECTION 31; THENCE RUN NORTH 89°22'12" EAST ALONG THE SOUTH LINE OF THE SOUTHWEST 1/4 OF SAID SECTION 31 FOR A DISTANCE OF 1691.60 FEET; THENCE DEPARTING SAID SOUTH LINE RUN NORTH 00°37'48" WEST FOR A DISTANCE OF 30.00 FEET TO THE SOUTHWEST CORNER OF TRACT FD-3 OF SAID HAWKSMOOR - PHASE 1 AND THE POINT OF BEGINNING; THENCE RUN ALONG THE WESTERLY LINE OF SAID TRACT FD-3 THE FOLLOWING COURSES: NORTH 51°24'48" EAST FOR A DISTANCE OF 12.16 FEET; THENCE RUN NORTH 72°30'25" EAST FOR A DISTANCE OF 41.92 FEET; THENCE RUN NORTH 89°50'16" EAST FOR A DISTANCE OF 65.23 FEET; THENCE RUN NORTH 81°09'59" EAST FOR A DISTANCE OF 89.46 FEET; THENCE RUN NORTH 54°21'58" EAST FOR A DISTANCE OF 86.46 FEET; THENCE RUN NORTH 10°47'45" EAST FOR A DISTANCE OF 98.09 FEET; THENCE RUN NORTH 21°15'31" WEST FOR A DISTANCE OF 72.93 FEET; THENCE RUN NORTH 24°27'32" WEST FOR A DISTANCE OF 140.34 FEET; THENCE RUN NORTH 13°24'31" WEST FOR A DISTANCE OF 112.62 FEET; THENCE RUN NORTH 24°24'35" WEST FOR A DISTANCE OF 78.99 FEET; THENCE RUN SOUTH 43°19'50" EAST FOR A DISTANCE OF 27.01 FEET; THENCE RUN NORTH 24°24'35" WEST FOR A DISTANCE OF 15.24 FEET; THENCE RUN NORTH 50°41'26" WEST FOR A DISTANCE OF 5.91 FEET; THENCE RUN NORTH 43°19'50" EAST FOR A DISTANCE OF 25.05 FEET; THENCE RUN NORTH 50°41'26" WEST FOR A DISTANCE OF 109.17 FEET; THENCE RUN NORTH 78°37'50" WEST FOR A DISTANCE OF 140.39 FEET; THENCE RUN NORTH 46°33'52" WEST FOR A DISTANCE OF 31.01 FEET; THENCE RUN NORTH 21°57'35" WEST FOR A DISTANCE OF 39.99 FEET; THENCE RUN NORTH 01°49'29" WEST FOR A DISTANCE OF 82.66 FEET; THENCE RUN NORTH 20°06'09" WEST FOR A DISTANCE OF 57.14 FEET; THENCE RUN NORTH 87°47'15" WEST FOR A DISTANCE OF 110.23 FEET; THENCE RUN SOUTH 49°24'59" WEST FOR A DISTANCE OF 43.14 FEET; THENCE RUN SOUTH 41°35'01" EAST FOR A DISTANCE OF 25.00 FEET; THENCE RUN SOUTH 49°24'59" WEST FOR A DISTANCE OF 20.00 FEET; THENCE RUN NORTH 41°35'01" WEST FOR A DISTANCE OF 25.00 FEET; THENCE RUN SOUTH 49°24'59" WEST FOR A DISTANCE OF 12.89 FEET; THENCE RUN NORTH 84°11'48" WEST FOR A DISTANCE OF 114.85 FEET; THENCE RUN NORTH 52°02'21" WEST FOR A DISTANCE OF 60.80 FEET; THENCE RUN NORTH 41°34'40" WEST FOR A DISTANCE OF 115.40 FEET; THENCE RUN NORTH 32°08'02" WEST FOR A DISTANCE OF 55.80 FEET; THENCE RUN NORTH 15°26'09" EAST FOR A DISTANCE OF 31.00 FEET; THENCE RUN NORTH 72°50'28" EAST FOR A DISTANCE OF 68.46 FEET; THENCE RUN SOUTH 86°50'15" EAST FOR A DISTANCE OF 132.52 FEET; THENCE RUN NORTH 87°47'45" EAST FOR A DISTANCE OF 89.23 FEET; THENCE RUN NORTH 72°34'22" EAST FOR A DISTANCE OF 148.54 FEET; THENCE RUN NORTH 22°08'57" EAST FOR A DISTANCE OF 148.90 FEET; THENCE RUN NORTH 09°25'05" EAST FOR A DISTANCE OF 115.22 FEET; THENCE RUN NORTH 26°47'25" EAST FOR A DISTANCE OF 107.60 FEET; THENCE RUN NORTH 20°30'56" EAST FOR A DISTANCE OF 149.12 FEET; THENCE RUN NORTH 25°03'20" EAST FOR A DISTANCE OF 130.98 FEET; THENCE RUN NORTH 17°28'50" WEST FOR A DISTANCE OF 119.99 FEET; THENCE RUN NORTH 17°06'57" WEST FOR A DISTANCE OF 124.76 FEET; THENCE RUN NORTH 35°20'51" WEST FOR A DISTANCE OF 58.12 FEET; THENCE RUN SOUTH 54°39'09" WEST FOR A DISTANCE OF 25.00 FEET; THENCE RUN NORTH 35°20'51" WEST FOR A DISTANCE OF 20.00 FEET; THENCE RUN SOUTH 54°39'09" WEST FOR A DISTANCE OF 25.00 FEET; THENCE RUN NORTH 35°20'51" WEST FOR A DISTANCE OF 70.20 FEET; THENCE RUN NORTH 34°50'08" WEST FOR A DISTANCE OF 115.80 FEET; THENCE RUN NORTH 00°18'28" EAST FOR A DISTANCE OF 74.05 FEET; THENCE RUN NORTH 14°34'47" EAST FOR A DISTANCE OF 77.42 FEET TO THE NORTHERLY LINE OF SAID TRACT FD-3; THENCE RUN ALONG SAID EASTERLY LINE THE FOLLOWING COURSES: SOUTH 39°33'18" EAST FOR A DISTANCE OF 146.65 FEET; THENCE RUN NORTH 87°51'11" EAST FOR A DISTANCE OF 118.35 FEET; THENCE RUN NORTH 33°16'02" EAST FOR A DISTANCE OF 126.13 FEET; THENCE RUN NORTH 04°23'47" WEST FOR A DISTANCE OF 10.07 FEET; THENCE RUN SOUTH 87°20'57" EAST FOR A DISTANCE OF 73.00 FEET TO THE EASTERLY LINE OF SAID TRACT FD-3; THENCE RUN ALONG SAID EASTERLY LINE THE FOLLOWING COURSES: SOUTH 39°33'18" EAST FOR A DISTANCE OF 136.25 FEET; THENCE RUN SOUTH 51°26'42" WEST FOR A DISTANCE OF 32.76 FEET; THENCE RUN NORTH 38°33'18" EAST FOR A DISTANCE OF 50.00 FEET; THENCE RUN NORTH 51°26'42" EAST FOR A DISTANCE OF 23.00 FEET; THENCE RUN SOUTH 38°33'18" EAST FOR A DISTANCE OF 241.66 FEET TO A NON-TANGENT POINT OF A CURVE CONCAVE NORTHWESTERLY WITH A RADIUS OF 1825.00 FEET, A CENTRAL ANGLE OF 0°05'47", THE CHORD OF WHICH BEARS SOUTH 39°39'30" WEST FOR A DISTANCE OF 24.01 FEET; THENCE SOUTHWESTERLY ALONG THE ARC OF SAID CURVE FOR A DISTANCE OF 24.01 FEET TO A NON-TANGENT POINT; THENCE RUN SOUTH 34°02'08" EAST FOR A DISTANCE OF 50.00 FEET TO A NON-TANGENT POINT OF A CURVE CONCAVE NORTHWESTERLY WITH A RADIUS OF 1675.00 FEET, A CENTRAL ANGLE OF 01°41'23", THE CHORD OF WHICH BEARS NORTH 55°07'12" EAST FOR A DISTANCE OF 49.40 FEET; THENCE NORTHEASTERLY ALONG THE ARC OF SAID CURVE FOR A DISTANCE OF 49.40 FEET TO A NON-TANGENT POINT; THENCE RUN SOUTH 40°38'47" EAST FOR A DISTANCE OF 87.99 FEET TO A NON-TANGENT POINT OF A CURVE CONCAVE SOUTHWESTERLY HAVING A RADIUS OF 619.74 FEET, A CENTRAL ANGLE OF 01°15'50", THE CHORD OF WHICH BEARS SOUTH 25°21'44" EAST FOR A DISTANCE OF 333.30 FEET; THENCE SOUTHEASTERLY ALONG THE ARC OF SAID CURVE FOR A DISTANCE OF 337.45 FEET TO A POINT OF TANGENCY; THENCE RUN SOUTH 09°41'19" EAST FOR A DISTANCE OF 181.93 FEET TO A NON-TANGENT POINT OF A CURVE CONCAVE NORTHERLY WITH A RADIUS OF 400.00 FEET, A CENTRAL ANGLE OF 17°45'55", THE CHORD OF WHICH BEARS SOUTH 82°49'23" WEST FOR A DISTANCE OF 122.26 FEET; THENCE SOUTHWESTERLY ALONG THE ARC OF SAID CURVE FOR A DISTANCE OF 122.74 FEET TO A POINT OF COMPOUND CURVATURE OF A CURVE CONCAVE NORTHEASTERLY WITH A RADIUS OF 25.00 FEET, A CENTRAL ANGLE OF 89°31'58", THE CHORD OF WHICH BEARS NORTH 40°37'11" WEST FOR A DISTANCE OF 37.02 FEET; THENCE NORTHEASTERLY ALONG THE ARC OF SAID CURVE FOR A DISTANCE OF 41.68 FEET TO A NON-TANGENT POINT; THENCE RUN NORTH 82°51'10" WEST FOR A DISTANCE OF 50.00 FEET TO A NON-TANGENT POINT OF A CURVE CONCAVE NORTHWESTERLY WITH A RADIUS OF 450.00 FEET, A CENTRAL ANGLE OF 11°42'42", THE CHORD OF WHICH BEARS SOUTH 13°00'10" WEST FOR A DISTANCE OF 91.82 FEET; THENCE SOUTHWESTERLY ALONG THE ARC OF SAID CURVE FOR A DISTANCE OF 91.98 FEET TO A POINT OF TANGENCY; THENCE RUN SOUTH 18°51'31" WEST FOR A DISTANCE OF 6.17 FEET; THENCE RUN NORTH 71°08'29" WEST FOR A DISTANCE OF 119.01 FEET; THENCE RUN NORTH 39°18'56" EAST FOR A DISTANCE OF 62.17 FEET; THENCE RUN NORTH 30°05'43" EAST FOR A DISTANCE OF 102.51 FEET; THENCE RUN NORTH 09°52'37" WEST FOR A DISTANCE OF 170.81 FEET; THENCE RUN NORTH 35°27'51" WEST FOR A DISTANCE OF 142.40 FEET; THENCE RUN NORTH 69°09'48" WEST FOR A DISTANCE OF 34.82 FEET TO A NON-TANGENT POINT OF A CURVE CONCAVE NORTHWESTERLY WITH A RADIUS OF 1333.15 FEET, A CENTRAL ANGLE OF 15°48'14", THE CHORD OF WHICH BEARS SOUTH 65°04'18" WEST FOR A DISTANCE OF 366.36 FEET; THENCE SOUTHWESTERLY ALONG THE ARC OF SAID CURVE FOR A DISTANCE OF 367.72 FEET TO A NON-TANGENT POINT; THENCE RUN SOUTH 08°44'21" WEST FOR A DISTANCE OF 77.87 FEET; THENCE RUN SOUTH 06°28'26" EAST FOR A DISTANCE OF 97.85 FEET; THENCE RUN SOUTH 89°40'46" WEST FOR A DISTANCE OF 27.29 FEET; THENCE RUN NORTH 88°59'56" WEST FOR A DISTANCE OF 130.71 FEET; THENCE RUN SOUTH 88°44'27" WEST FOR A DISTANCE OF 185.32 FEET; THENCE RUN SOUTH

60°22'00" WEST FOR A DISTANCE OF 130.50 FEET; THENCE RUN SOUTH 41°07'08" WEST FOR A DISTANCE OF 115.82 FEET; THENCE RUN SOUTH 11°28'31" WEST FOR A DISTANCE OF 96.52 FEET; THENCE RUN SOUTH 17°14'34" EAST FOR A DISTANCE OF 136.13 FEET; THENCE RUN SOUTH 43°37'36" EAST FOR A DISTANCE OF 82.50 FEET; THENCE RUN NORTH 43°19'50" EAST FOR A DISTANCE OF 19.90 FEET; THENCE RUN SOUTH 47°01'59" EAST FOR A DISTANCE OF 20.00 FEET; THENCE RUN SOUTH 43°19'50" WEST FOR A DISTANCE OF 21.09 FEET; THENCE RUN SOUTH 43°37'36" EAST FOR A DISTANCE OF 65.77 FEET; THENCE RUN SOUTH 58°42'53" EAST FOR A DISTANCE OF 94.00 FEET; THENCE RUN SOUTH 87°04'28" EAST FOR A DISTANCE OF 200.02 FEET; THENCE RUN NORTH 67°22'21" EAST FOR A DISTANCE OF 71.34 FEET; THENCE RUN NORTH 65°11'02" EAST FOR A DISTANCE OF 130.92 FEET; THENCE RUN NORTH 55°48'28" EAST FOR A DISTANCE OF 112.62 FEET; THENCE RUN SOUTH 40°44'25" EAST FOR A DISTANCE OF 145.75 FEET TO A NON-TANGENT POINT OF A CURVE CONCAVE NORTHWESTERLY WITH A RADIUS OF 350.00 FEET, A CENTRAL ANGLE OF 02°12'39", THE CHORD OF WHICH BEARS SOUTH 50°21'54" WEST FOR A DISTANCE OF 13.50 FEET; THENCE SOUTHWESTERLY ALONG THE ARC OF SAID CURVE FOR A DISTANCE OF 13.50 FEET TO A POINT OF TANGENCY; THENCE RUN SOUTH 51°28'13" WEST FOR A DISTANCE OF 141.22 FEET TO THE POINT OF CURVATURE OF A CURVE CONCAVE NORTHWESTERLY WITH A RADIUS OF 365.00 FEET, A CENTRAL ANGLE OF 33°04'18", THE CHORD OF WHICH BEARS SOUTH 68°02'22" WEST FOR A DISTANCE OF 207.20 FEET; THENCE SOUTHWESTERLY ALONG THE ARC OF SAID CURVE FOR A DISTANCE OF 210.68 FEET TO A NON-TANGENT POINT; THENCE RUN SOUTH 05°27'20" EAST FOR A DISTANCE OF 50.00 FEET TO A NON-TANGENT POINT OF A CURVE CONCAVE NORTHERLY WITH A RADIUS OF 415.00 FEET, A CENTRAL ANGLE OF 00°58'03", THE CHORD OF WHICH BEARS NORTH 84°03'20" EAST FOR A DISTANCE OF 7.01 FEET; THENCE NORTHEASTERLY ALONG THE ARC OF SAID CURVE FOR A DISTANCE OF 7.01 FEET TO A NON-TANGENT POINT; THENCE RUN SOUTH 08°38'29" EAST FOR A DISTANCE OF 9.09 FEET; THENCE RUN SOUTH 81°21'30" WEST FOR A DISTANCE OF 2.00 FEET; THENCE RUN SOUTH 08°38'29" EAST FOR A DISTANCE OF 45.00 FEET; THENCE RUN NORTH 81°21'30" EAST FOR A DISTANCE OF 47.00 FEET; THENCE RUN NORTH 08°38'29" WEST FOR A DISTANCE OF 45.00 FEET; THENCE RUN SOUTH 81°21'30" WEST FOR A DISTANCE OF 25.00 FEET; THENCE RUN NORTH 08°38'29" WEST FOR A DISTANCE OF 8.80 FEET TO A NON-TANGENT POINT OF A CURVE CONCAVE NORTHWESTERLY WITH A RADIUS OF 415.00 FEET, A CENTRAL ANGLE OF 0°20'33", THE CHORD OF WHICH BEARS NORTH 66°08'20" EAST FOR A DISTANCE OF 210.21 FEET; THENCE NORTHEASTERLY ALONG THE ARC OF SAID CURVE FOR A DISTANCE OF 212.33 FEET TO A POINT OF TANGENCY; THENCE RUN SOUTH 51°28'13" EAST FOR A DISTANCE OF 141.22 FEET TO A POINT OF CURVATURE OF A CURVE CONCAVE NORTHWESTERLY WITH A RADIUS OF 400.00 FEET, A CENTRAL ANGLE OF 02°12'39", THE CHORD OF WHICH BEARS NORTH 66°08'20" EAST FOR A DISTANCE OF 15.43 FEET; THENCE NORTHEASTERLY ALONG THE ARC OF SAID CURVE FOR A DISTANCE OF 15.43 FEET TO A NON-TANGENT POINT; THENCE RUN SOUTH 38°31'47" EAST FOR A DISTANCE OF 50.00 FEET TO THE SOUTHERLY LINE OF SAID TRACT FD-3; THENCE RUN ALONG SAID SOUTHERLY LINE THE FOLLOWING COURSES: SOUTH 51°28'13" WEST FOR A DISTANCE OF 788.34 FEET; THENCE RUN SOUTH 89°22'12" WEST FOR A DISTANCE OF 374.84 FEET TO THE POINT OF BEGINNING.

CONTAINING: 1,423,065 SQUARE FEET OR 32.67 ACRES OF LAND, MORE OR LESS.



**Sign Legend**

Symbol	MUTCD Designation/Size	Quantity
	Street Name Sign	2 AS
	R1-1 (30" X 30")	2 AS

**MAP SCALE:**

**NOTICE:**

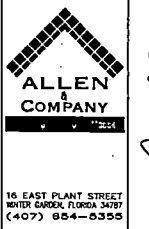
THIS PLAT, AS RECORDED IN ITS GRAPHIC FORM, IS THE OFFICIAL EXPRESSION OF THE SUBDIVIDED LANDS DESCRIBED HEREIN AND WILL IN NO CIRCUMSTANCES BE SUPPLANTED IN AUTHORITY BY ANY OTHER GRAPHIC OR DIGITAL FORM OF THE PLAT. THERE MAY BE ADDITIONAL RESTRICTIONS THAT ARE NOT RECORDED ON THIS PLAT THAT MAY BE FOUND IN THE PUBLIC RECORDS OF THIS COUNTY.

**QUALIFICATION STATEMENT OF SURVEYOR AND MAPPER**

KNOW ALL MEN BY THESE PRESENTS, that I the undersigned, being a licensed surveyor and mapper, do hereby certify that on this day of 1/31/20, I completed the survey of the lands as shown in the foregoing plat or plan: that said plat is a true and correct representation of the lands surveyed and plotted; that I performed the survey in my own direction and supervision; that permanent reference monuments have been placed as shown thereon; and this plat complies with all the survey requirements of Chapter 177, Florida Statutes; and that said land is located in Orange County, Florida.

By: [Signature] Date: 1/31/20

James E. Prichard, P.S.M. 6833  
 15-07-2003 as approved by the Orange County Board of County Commissioners on July 9, 2015, and the substantial change (Case #DR-17-01-010) as approved by the Orange County Board of County Commissioners on September 11, 2016.



**KEY MAP (NOT TO SCALE)**

**SHEET INDEX**

SHEET 1 OF 8 - LEGAL DESCRIPTION AND DEDICATION  
 SHEET 2 OF 8 - SURVEYOR'S NOTES AND LEGEND  
 SHEET 3 OF 8 - BOUNDARY INFORMATION,  
 SHEETS 4 THROUGH 8 OF 8 - LOTS AND TRACTS GEOMETRY

The property shown hereon represents portion of the lands included in the Zonabur Planned Development-Phase 1 Horizon West Village H, Preliminary Subdivision Plan (Case #SP 15-07-2003) approved by the Orange County Board of County Commissioners on July 9, 2015, and the substantial change (Case #DR-17-01-010) as approved by the Orange County Board of County Commissioners on September 11, 2016.

### HAWKSMOOR PHASE 4 DEDICATION

KNOW ALL MEN BY THESE PRESENTS, That the undersigned, Mattomy Orlando LLC, a Delaware limited liability company, being the owner in fee simple of the lands described in the foregoing caption to this plat, hereby dedicates said lands and plot for the uses and purposes therein expressed and dedicates the streets, drainage easements (unless noted otherwise herein), utility easements, and Tracts SW-8 and SW-10 (Stormwater) shown hereon, to the perpetual use of the public, and dedicates the O.C.A.E. to Orange County, Florida.

IN WITNESS WHEREOF, Mattomy Orlando LLC, a Delaware limited liability company, has caused these presents to be executed and acknowledged to by David Hulme, Vice President of Mattomy Orlando LLC, a Delaware limited liability company on 07th day of FEBRUARY, 2020.

Mattomy Orlando LLC, a Delaware limited liability company  
 By: [Signature]  
 Printed Name: David Hulme, Vice President

Witnessed and Signed in the presence of:  
[Signature] [Signature]  
 Signature Printed Name  
[Signature] [Signature]  
 Signature Printed Name

STATE OF FLORIDA  
COUNTY OF ORANGE

I HEREBY CERTIFY, that on this day, before me by means of 00 physical presence or ( ) online notarization appeared David Hulme, the Vice President of Mattomy Orlando LLC, a Delaware limited liability company, who is (X) personally known to me or ( ) described in the foregoing caption to this plat, identification and did/did not take an oath, the individual and officer described in and who executed the foregoing conveyance and acknowledged the execution thereof to be his free act and deed as such officer lawfully authorized, and the said conveyance is the act and deed of said company.

WITNESS my hand and official seal this 5th day of FEBRUARY, 2020.

[Signature]  
 Signature of Notary Public  
Dana Rolon  
 Printed Name of Notary Public

My Commission Expires Dec 18, 2021  
 Commission Number 6681164959

**CERTIFICATE OF APPROVAL BY ZONING DIRECTOR**

Examined and Approved [Signature] 2-20-20  
 Zoning Director Date

**CERTIFICATE OF REVIEW BY COUNTY SURVEYOR**

This plat has been reviewed for conformity with Chapter 177, Florida Statutes.

[Signature] 2-19-20  
 County Surveyor Date

**CERTIFICATE OF APPROVAL BY COUNTY ENGINEER**

Examined and Approved [Signature] 2-19-20  
 County Engineer Date

**CERTIFICATE OF APPROVAL BY BOARD OF COUNTY COMMISSIONERS**

THIS IS TO CERTIFY, that on 2-24-20 the foregoing plat was approved by the Board of County Commissioners of Orange County, Florida.

[Signature]  
 Attest: Phil Diamond  
 Clerk of the Board.

**CERTIFICATE OF COUNTY COMPTROLLER**

I HEREBY CERTIFY, that the foregoing plat was recorded in the Orange County Official Records on 02/24/2020 as Document No. 20200174810.

County Comptroller in and for Orange County, Florida  
 By: [Signature]

# HAWKSMOOR PHASE 4

A REPLAT OF TRACT FD-3 HAWKSMOOR - PHASE 1 AS RECORDED IN  
 PLAT BOOK 93, PAGES 108 THROUGH 121 OF THE PUBLIC RECORDS OF ORANGE COUNTY, FLORIDA,  
 LYING IN SECTION 31, TOWNSHIP 23 SOUTH, RANGE 27 EAST, ORANGE COUNTY, FLORIDA

LEGEND:

D.B.	DEED BOOK	□	RECOVERED 4" x 4" CONCRETE MONUMENT LB 6723 PERMANENT REFERENCE MONUMENT, UNLESS OTHERWISE NOTED
P.C.	POINT OF CURVATURE		
P.C.C.	POINT OF COMPOUND CURVATURE	■	SET 4" x 4" CONCRETE MONUMENT STAMPED PRM LB 6723, UNLESS OTHERWISE NOTED
P.T.	POINT OF TANGENCY		
P.I.	POINT OF INTERSECTION	⊙	SET NAIL AND DISK, STAMPED LB 6723 PERMANENT CONTROL POINT (PCP)
N.T.	NON-TANGENT	R	RADIUS
CCR#	CERTIFIED CORNER RECORD	CB	CHORD BEARING
P.S.M.	PROFESSIONAL SURVEYOR AND MAPPER	CH	CHORD
R/W	RIGHT-OF-WAY	Δ	DELTA ANGLE
NR	NON-RADIAL	L	ARC LENGTH
LB	LICENSED BUSINESS	⊕	CENTERLINE
PRM	PERMANENT REFERENCE MONUMENT	O.A.	OVERALL
P.W.E.S.E.	PRIVATE WALL & ENVIRONMENTAL SWALE EASEMENT	DOC #	OFFICIAL RECORD DOCUMENT NUMBER OF THE PUBLIC RECORDS OF ORANGE COUNTY, FLORIDA
D.E.	DRAINAGE EASEMENT	E.S.E.	ENVIRONMENTAL SWALE EASEMENT
U.E.	UTILITY EASEMENT	O.C.A.E.	ORANGE COUNTY ACCESS EASEMENT
OS/L/W	OPEN SPACE/LANDSCAPE/WALL		
F.K.A.	FORMERLY KNOWN AS		

SURVEYOR'S NOTES:

1. BEARINGS SHOWN HEREON ARE BASED ON THE SOUTH LINE OF THE SOUTHEAST 1/4 OF SECTION 31, TOWNSHIP 23 SOUTH, RANGE 27 EAST AS BEING SOUTH 89°46'19" EAST.
2. ALL LOT LINES ARE RADIAL, UNLESS OTHERWISE NOTED NON-RADIAL ( NR ).
3. ALL PLATTED UTILITY EASEMENTS SHALL ALSO BE EASEMENTS FOR THE CONSTRUCTION, INSTALLATION, MAINTENANCE AND OPERATION OF CABLE TELEVISION SERVICES. PROVIDED, HOWEVER, NO SUCH CONSTRUCTION, INSTALLATION, MAINTENANCE, AND OPERATION OF CABLE TELEVISION SERVICES SHALL INTERFERE WITH THE FACILITIES AND SERVICES OF AN ELECTRIC, TELEPHONE, GAS, OR OTHER PUBLIC UTILITY. IN THE EVENT A CABLE TELEVISION COMPANY DAMAGES THE FACILITIES OF A PUBLIC UTILITY, IT SHALL BE SOLELY RESPONSIBLE FOR THE DAMAGES. THIS SECTION SHALL NOT APPLY TO THOSE PRIVATE EASEMENTS GRANTED TO OR OBTAINED BY A PARTICULAR ELECTRIC, TELEPHONE, GAS, OR OTHER PUBLIC UTILITY. SUCH CONSTRUCTION, INSTALLATION, MAINTENANCE, AND OPERATION SHALL COMPLY WITH THE NATIONAL ELECTRICAL SAFETY CODE AS ADOPTED BY THE FLORIDA PUBLIC SERVICE COMMISSION.
4. THE LANDS SHOWN HEREON ARE SUBJECT TO THAT CERTAIN COMMUNITY DECLARATION FOR HAWKSMOOR RECORDED IN DOC# 20170516513 OF THE PUBLIC RECORDS OF ORANGE COUNTY, FLORIDA, AND ANY SUPPLEMENTS AND/OR AMENDMENTS THERETO (THE DECLARATION).
5. TRACTS OS-17, OS-18, OS-19, OS-20, OS-21, OS-22, OS-24, AND OS-25 (OPEN SPACE) AND TRACT OS-23 (OPEN SPACE/LANDSCAPE/WALL) ARE COMMON AREAS AS DEFINED IN THE DECLARATION AND SHALL BE OWNED AND MAINTAINED BY THE HAWKSMOOR COMMUNITY OWNERS ASSOCIATION, INC. (THE ASSOCIATION).
6. THE PRIVATE WALL & ENVIRONMENTAL SWALE EASEMENTS (P.W.E.S.E.) SHOWN HEREON ARE HEREBY DEDICATED TO AND SHALL BE MAINTAINED BY THE ASSOCIATION. NO CONSTRUCTION, CLEARING, GRADING OR ALTERATION IS PERMITTED WITHOUT PRIOR APPROVAL OF ORANGE COUNTY, FLORIDA AND/OR ALL OTHER APPLICABLE JURISDICTIONAL AGENCIES.
7. TRACT SW-9 (COMPENSATING STORAGE AREA) SHALL BE DEDICATED TO AND MAINTAINED BY THE ASSOCIATION.
8. THE ENVIRONMENTAL SWALE EASEMENT (E.S.E.) SHOWN HEREON IS HEREBY DEDICATED TO AND MAINTAINED BY THE ASSOCIATION. NO CONSTRUCTION, CLEARING, GRADING OR ALTERATION IS PERMITTED WITHOUT PRIOR APPROVAL OF ORANGE COUNTY, FLORIDA AND/OR ALL OTHER APPLICABLE JURISDICTIONAL AGENCIES.
9. A UTILITY EASEMENT IS HEREBY DEDICATED TO THE PERPETUAL USE OF THE PUBLIC OVER THE ENTIRETY OF TRACT OS-23 (OPEN SPACE/LANDSCAPE/WALL).
10. AN ACCESS EASEMENT (O.C.A.E.) IS HEREBY DEDICATED TO ORANGE COUNTY, FLORIDA OVER THE ENTIRETY OF TRACT SW-9 AS SPECIFIC ACCESS FOR THE CONSERVATION EASEMENT RECORDED IN DOC# 20170473433 OF THE PUBLIC RECORDS OF ORANGE COUNTY, FLORIDA.

KEY MAP  
(NOT TO SCALE)



16 EAST PLANT STREET  
 WINTER GARDEN, FLORIDA 34787  
 (407) 854-5355

SHEET INDEX  
 SHEET 1 OF 8 - LEGAL DESCRIPTION AND DEDICATION  
 SHEET 2 OF 8 - SURVEYOR'S NOTES, LOCATION MAP AND LEGEND  
 SHEET 3 OF 8 - BOUNDARY INFORMATION  
 SHEETS 4 THROUGH 8 OF 8 - LOTS AND TRACTS GEOMETRY

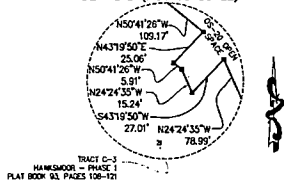
# HAWKSMOOR PHASE 4

A REPLAT OF TRACT FD-3 HAWKSMOOR - PHASE 1 AS RECORDED IN PLAT BOOK 93, PAGES 108 THROUGH 121 OF THE PUBLIC RECORDS OF ORANGE COUNTY, FLORIDA, LYING IN SECTION 31, TOWNSHIP 23 SOUTH, RANGE 27 EAST, ORANGE COUNTY, FLORIDA

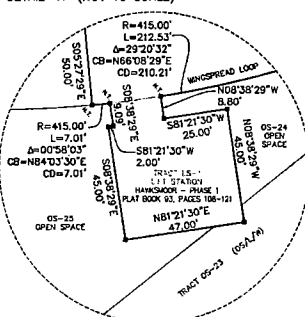
KEY MAP (NOT TO SCALE)



DETAIL B (NOT TO SCALE)

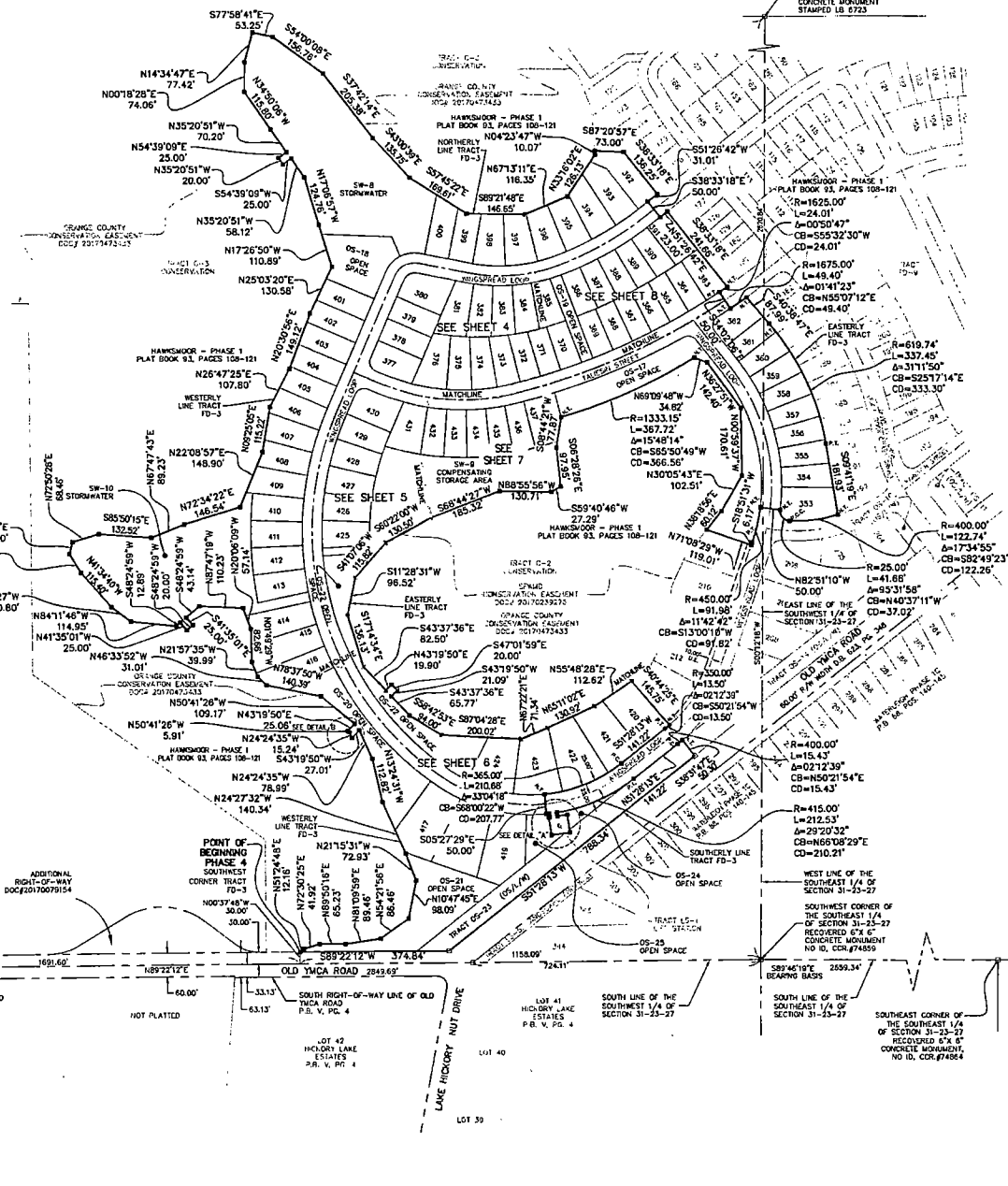


DETAIL "A" (NOT TO SCALE) NOT PLATTED



16 EAST PLANT STREET  
WINTER GARDEN, FLORIDA 34787  
(407) 654-5355

**SHEET INDEX**  
SHEET 1 OF 8 - LEGAL DESCRIPTION AND DEDICATION  
SHEET 2 OF 8 - SURVEYOR'S NOTES, LOCATION MAP AND LEGEND  
SHEET 3 OF 8 - BOUNDARY INFORMATION,  
SHEETS 4 THROUGH 8 OF 8 - LOTS AND TRACTS GEOMETRY



NORTHEAST CORNER OF THE SOUTHWEST 1/4 OF SECTION 31-23-27 RECOVERED 8" x 8" CONCRETE MONUMENT STAMPED 18.5723

HAWKSMOOR - PHASE 1 PLAT BOOK 93, PAGES 108-121  
R=1625.00'  
L=24.01'  
Δ=00°50'47"  
CB=S55°32'30"W  
CD=24.01'

R=1675.00'  
L=49.40'  
Δ=01°41'23"  
CB=N55°07'12"E  
CD=48.40'

R=619.74'  
L=337.45'  
Δ=31°15'50"  
CB=S25°17'14"E  
CD=333.30'

R=400.00'  
L=122.74'  
Δ=17°34'55"  
CB=S82°49'23"W  
CD=122.26'

R=400.00'  
L=15.43'  
Δ=02°12'39"  
CB=N50°21'54"E  
CD=15.43'

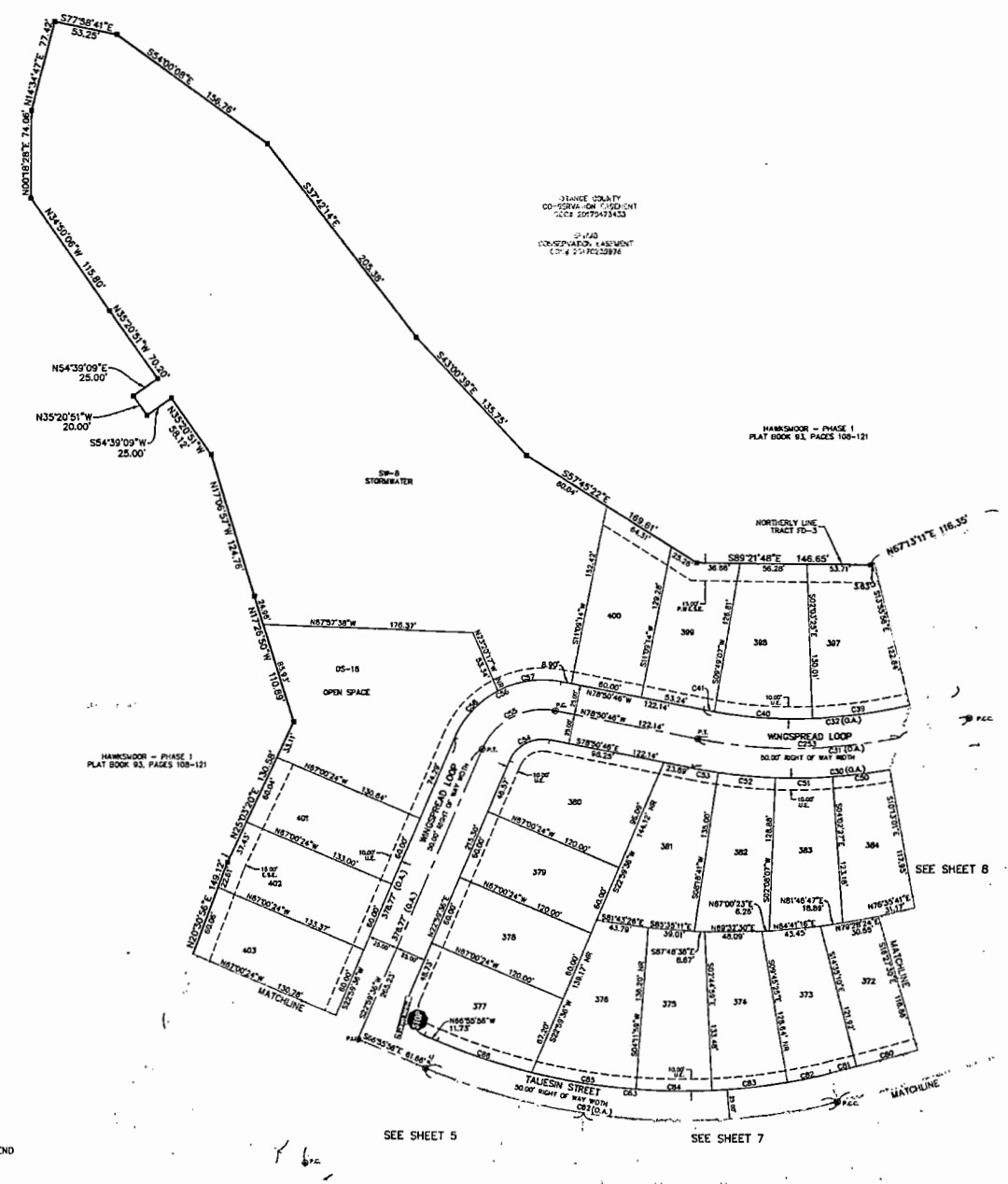
R=415.00'  
L=212.53'  
Δ=29°20'53"  
CB=N68°08'29"E  
CD=210.21'

SOUTHWEST CORNER OF THE SOUTHWEST 1/4 OF SECTION 31-23-27 RECOVERED 8" x 8" CONCRETE MONUMENT NO. ID. CCR #74864

# HAWKSMOOR PHASE 4

A REPLAT OF TRACT FD-3 HAWKSMOOR - PHASE 1 AS RECORDED IN  
 PLAT BOOK 93, PAGES 108 THROUGH 121 OF THE PUBLIC RECORDS OF ORANGE COUNTY, FLORIDA,  
 LYING IN SECTION 31, TOWNSHIP 23 SOUTH, RANGE 27 EAST, ORANGE COUNTY, FLORIDA

CURVE	RADIUS	LENGTH	CHORD BEARING	CHORD DISTANCE	CENTRAL ANGLE
C30	450.00'	245.41'	N85°31'27"E	242.48'	313°53'3"
C31	425.00'	231.87'	S85°31'27"W	228.00'	313°53'3"
C32	400.00'	218.33'	N85°31'27"E	213.52'	313°53'3"
C38	400.00'	43.10'	S72°58'52"W	43.07'	06°10'21"
C39	400.00'	82.81'	S84°30'19"W	82.78'	115°22'2"
C40	400.00'	82.81'	N85°30'09"W	82.78'	115°22'2"
C41	400.00'	9.32'	N73°30'49"W	9.32'	01°20'06"
C46	450.00'	23.83'	N71°46'31"E	23.62'	03°46'21"
C48	450.00'	48.63'	N61°51'30"E	48.61'	06°03'07"
C50	450.00'	48.41'	N82°52'16"E	48.40'	06°10'34"
C51	450.00'	48.41'	N89°02'56"E	48.40'	06°10'34"
C52	450.00'	48.41'	S84°16'36"E	48.40'	06°10'34"
C53	450.00'	22.32'	S40°16'04"E	22.32'	02°56'31"
C54	450.00'	48.32'	N82°26'24"E	48.32'	78°59'28"
C55	450.00'	28.03'	S82°26'24"W	28.04'	78°59'28"
C56	400.00'	109.13'	S84°24'23"W	109.87'	78°59'28"
C57	400.00'	54.57'	S81°38'49"W	53.91'	39°04'49"
C58	400.00'	54.57'	S42°32'00"W	53.91'	39°04'49"
C59	25.00'	39.74'	N71°38'10"W	38.94'	89°50'32"
C62	450.00'	353.78'	S85°21'37"E	347.12'	388°12'3"
C63	450.00'	337.71'	N85°21'37"W	331.07'	388°12'3"
C68	425.00'	8.41'	N62°34'50"E	8.41'	00°10'52"
C78	425.00'	56.51'	S70°46'40"W	56.41'	01°06'46"
C79	425.00'	53.10'	S72°38'17"W	53.10'	01°52'27"
C80	425.00'	53.10'	S74°28'40"W	53.10'	01°52'27"
C81	425.00'	22.82'	S74°48'48"W	22.82'	00°47'51"
C82	425.00'	37.25'	S78°14'38"W	37.24'	04°12'44"
C83	425.00'	33.90'	S82°55'18"W	33.89'	06°56'51"
C84	425.00'	53.08'	N89°13'31"W	53.08'	06°58'26"
C85	425.00'	88.84'	N89°24'21"W	88.84'	09°42'23"
C86	425.00'	83.65'	N81°29'18"W	83.65'	09°07'44"
C83	425.00'	173.37'	N89°28'09"E	170.21'	23°08'10"
C84	425.00'	83.50'	N74°56'22"E	80.42'	09°12'22"



**ALLEN & COMPANY**  
 Surveyors, Engineers, and Planners

16 EAST PLANT STREET  
 WINTER GARDEN, FLORIDA 34787  
 (407) 654-5355

SHEET INDEX  
 SHEET 1 OF 8 - LEGAL DESCRIPTION AND DEDICATION  
 SHEET 2 OF 8 - SURVEYOR'S NOTES, LOCATION MAP AND LEGEND  
 SHEET 3 OF 8 - BOUNDARY INFORMATION  
 SHEETS 4 THROUGH 8 OF 8 - LOTS AND TRACTS GEOMETRY

ORANGE COUNTY  
 COUNTY CLERK  
 202009493423

STATE  
 COMPTROLLER CLERK  
 202009493423

HAWKSMOOR - PHASE 1  
 PLAT BOOK 93, PAGES 108-121

HAWKSMOOR - PHASE 1  
 PLAT BOOK 93, PAGES 108-121

SEE SHEET 5

SEE SHEET 7

SEE SHEET 8

# HAWKSMOOR PHASE 4

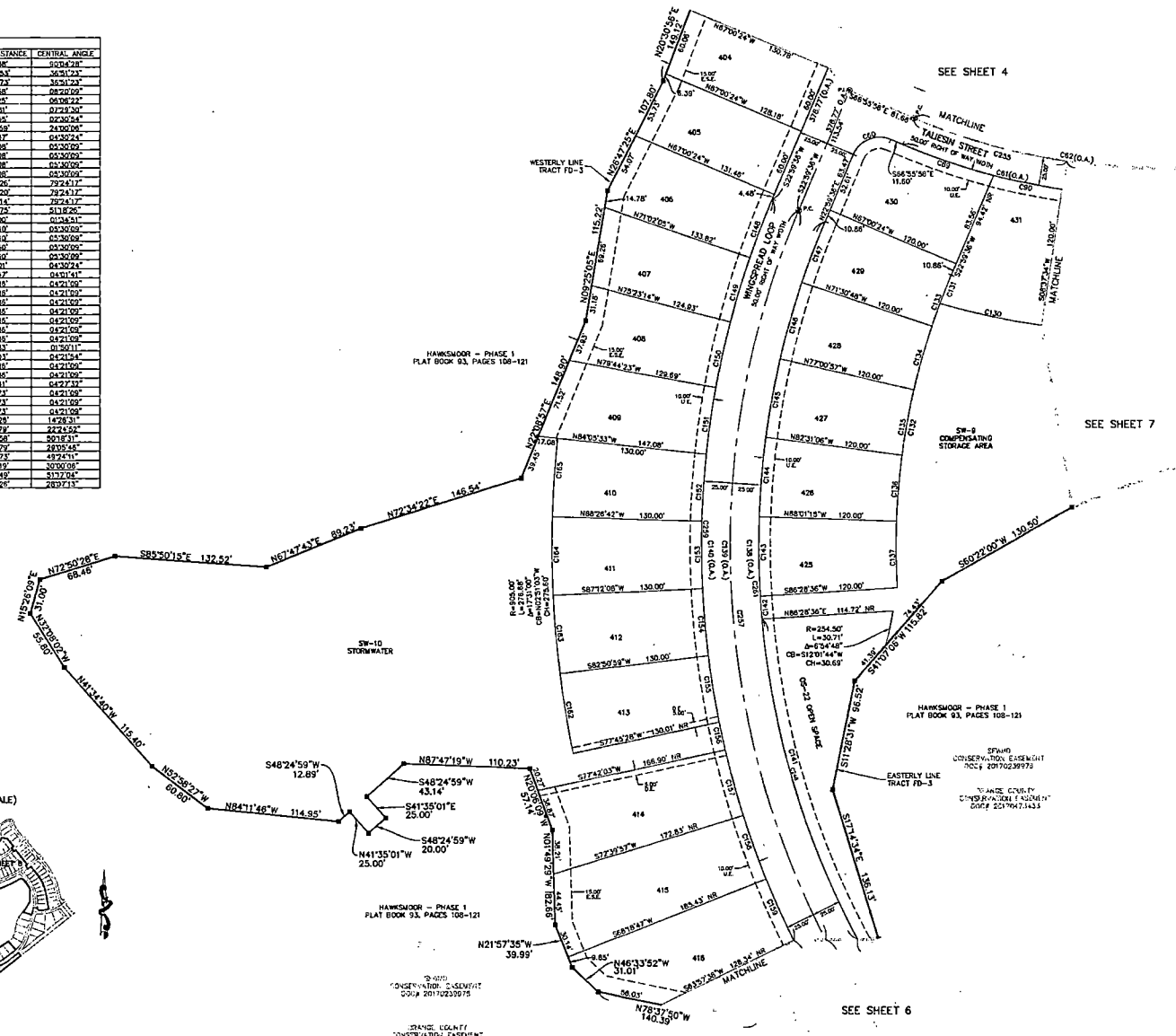
A REPLAT OF TRACT FD-3 HAWKSMOOR - PHASE 1 AS RECORDED IN  
 PLAT BOOK 93, PAGES 108 THROUGH 121 OF THE PUBLIC RECORDS OF ORANGE COUNTY, FLORIDA,  
 LYING IN SECTION 31, TOWNSHIP 23 SOUTH, RANGE 27 EAST, ORANGE COUNTY, FLORIDA

CURVE	RADIUS	LENGTH	CURVE BEARING	CHORD DISTANCE	CENTRAL ANGLE
C00	23.00'	33.30'	N81°01'00"W	33.30'	50°04'21"
C01	375.00'	359.88'	S85°21'17"E	363.53'	35°51'23"
C02	250.00'	353.73'	S85°21'17"E	333.73'	36°50'27"
C03	215.00'	213.65'	S11°09'00"W	213.56'	08°00'00"
C04	275.00'	261.28'	S78°31'16"E	261.25'	08°08'22"
C100	605.00'	292.87'	N72°34'22"W	300.81'	07°28'30"
C101	605.00'	28.56'	S21°44'09"W	28.55'	02°00'54"
C102	605.00'	233.44'	S08°28'33"W	231.49'	24°00'08"
C103	605.00'	472.62'	S08°46'24"W	472.67'	04°00'14"
C104	605.00'	28.10'	S18°44'07"W	28.08'	05°00'02"
C105	605.00'	28.10'	S10°33'56"W	28.08'	05°00'02"
C106	605.00'	58.10'	S08°43'19"W	58.08'	05°00'02"
C107	605.00'	58.10'	S00°48'20"E	58.08'	05°00'02"
C108	725.00'	1004.76'	N16°23'33"W	976.26'	79°24'17"
C109	725.00'	1039.01'	S16°42'33"E	996.00'	79°24'17"
C140	725.00'	1024.00'	S16°42'33"E	990.14'	79°24'17"
C141	725.00'	619.42'	S32°42'27"E	592.75'	51°08'26"
C142	725.00'	20.00'	N00°00'00"W	20.00'	01°00'01"
C143	725.00'	63.83'	N00°46'20"W	63.80'	03°00'02"
C144	725.00'	63.83'	N00°46'20"W	63.80'	03°00'02"
C145	725.00'	63.83'	N10°23'58"E	63.80'	03°00'02"
C146	725.00'	63.83'	N15°44'07"E	63.80'	03°00'02"
C147	725.00'	37.01'	N10°44'24"E	37.01'	04°00'14"
C148	725.00'	54.47'	S20°38'46"W	54.47'	04°01'31"
C149	725.00'	58.87'	S18°42'21"W	58.85'	04°21'08"
C150	725.00'	58.87'	S12°28'11"W	58.85'	04°21'08"
C151	725.00'	58.87'	S08°05'02"W	58.85'	04°21'08"
C152	725.00'	58.87'	S03°13'52"W	58.85'	04°21'08"
C153	725.00'	58.87'	S00°01'17"E	58.85'	04°21'08"
C154	725.00'	58.87'	S04°38'27"E	58.85'	04°21'08"
C155	725.00'	58.87'	S08°13'36"E	58.85'	04°21'08"
C156	725.00'	24.84'	S12°25'16"E	24.83'	01°50'11"
C157	725.00'	59.02'	S13°31'17"E	59.01'	04°21'08"
C158	725.00'	58.87'	S18°32'49"E	58.85'	04°21'08"
C159	725.00'	58.87'	S24°13'56"E	58.85'	04°21'08"
C160	605.00'	70.43'	N00°22'47"W	70.41'	04°27'32"
C161	605.00'	63.73'	N00°36'27"W	63.73'	04°21'08"
C162	605.00'	63.73'	N00°33'17"W	63.73'	04°21'08"
C163	605.00'	63.73'	N00°33'17"W	63.73'	04°21'08"
C164	605.00'	63.73'	N00°33'17"W	63.73'	04°21'08"
C165	605.00'	136.63'	S14°19'11"E	136.63'	14°19'11"
C200	350.00'	213.18'	N87°42'03"W	213.73'	22°24'52"
C201	350.00'	638.64'	S00°00'00"W	637.56'	30°01'14"
C202	350.00'	300.87'	S41°31'48"E	376.79'	28°35'46"
C203	725.00'	688.24'	S01°42'30"E	687.73'	49°24'11"
C204	725.00'	659.81'	S01°24'58"E	659.19'	30°00'00"
C205	725.00'	648.83'	S01°38'36"E	647.49'	31°37'04"
C206	725.00'	355.82'	S47°21'05"E	352.28'	28°27'13"



18 EAST PLANT STREET  
 WINTER GARDEN, FLORIDA 34787  
 (407) 654-5355

**SHEET INDEX**  
 SHEET 1 OF 8 - LEGAL DESCRIPTION AND DEDICATION  
 SHEET 2 OF 8 - SURVEYOR'S NOTES, LOCATION MAP AND LEGEND  
 SHEET 3 OF 8 - BOUNDARY INFORMATION  
 SHEETS 4 THROUGH 8 OF 8 - LOTS AND TRACTS GEOMETRY



SEE SHEET 4

SEE SHEET 7

SEE SHEET 6

HAWKSMOOR - PHASE 1  
 PLAT BOOK 93, PAGES 108-121

HAWKSMOOR - PHASE 1  
 PLAT BOOK 93, PAGES 108-121

HAWKSMOOR - PHASE 1  
 PLAT BOOK 93, PAGES 108-121

HAWKSMOOR - PHASE 1  
 PLAT BOOK 93, PAGES 108-121

HAWKSMOOR - PHASE 1  
 PLAT BOOK 93, PAGES 108-121

SPANO  
 CONSERVATION EASEMENT  
 DEC 2 2010 2010039778

SPANO  
 CONSERVATION EASEMENT  
 DEC 2 2010 2010039778

SPANO  
 CONSERVATION EASEMENT  
 DEC 2 2010 2010039778

SPANO  
 CONSERVATION EASEMENT  
 DEC 2 2010 2010039778

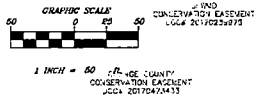
# HAWKSMOOR PHASE 4

A REPLAT OF TRACT FD-3 HAWKSMOOR - PHASE 1 AS RECORDED IN PLAT BOOK 93, PAGES 108 THROUGH 121 OF THE PUBLIC RECORDS OF ORANGE COUNTY, FLORIDA, LYING IN SECTION 31, TOWNSHIP 23 SOUTH, RANGE 27 EAST, ORANGE COUNTY, FLORIDA

KEY MAP  
(NOT TO SCALE)



CURVE	RADIUS	LENGTH	CHORD BEARING	CHORD DISTANCE	CENTRAL ANGLE
C02	330.00'	13.50'	S49°21'34"W	13.50'	0°12'38"
C03	415.00'	210.84'	S80°02'22"W	220.77'	3°03'18"
C04	415.00'	7.01'	N84°03'30"E	7.01'	0°03'50.3"
C05	415.00'	212.53'	N63°08'29"E	210.91'	2°20'50"
C06	400.00'	15.43'	N02°12'54"E	15.43'	0°02'42.9"
C10	725.00'	1004.76'	N18°52'33"W	628.28'	73°24'17"
C13	750.00'	1074.81'	S18°43'33"E	658.20'	75°24'17"
C14	775.00'	1074.09'	N84°14'33"E	900.14'	73°24'17"
C16	725.00'	149.22'	S50°45'29"E	677.73'	51°18'20"
C18	775.00'	378.79'	S60°14'57"E	378.00'	0°00'00.0"
C18	775.00'	27.00'	S55°44'43"E	27.04'	01°58'37"
C18	305.00'	248.74'	N12°56'05"W	243.94'	33°02'48"
C19	300.00'	205.70'	S12°56'05"E	200.00'	33°02'48"
C18	415.00'	282.87'	S12°56'05"E	277.35'	33°02'48"
C19	385.00'	40.21'	S64°37'34"W	40.19'	0°01'38.2"
C19	385.00'	124.97'	S91°13'52"W	123.90'	1°01'38.2"
C17	385.00'	124.97'	S81°00'45"W	123.98'	1°01'38.2"
C17	385.00'	122.60'	N12°26'17"E	122.60'	1°01'38.2"
C17	385.00'	47.43'	N50°09'18"W	47.43'	0°22'10.6"
C17	415.00'	60.73'	S62°28'20"E	60.70'	0°22'11.7"
C15	415.00'	88.00'	S10°43'18"E	85.85'	11°36'32.2"
C15	415.00'	88.00'	S83°52'47"E	85.80'	11°36'32.2"
C17	415.00'	50.00'	S87°02'44"E	50.00'	0°00'00.0"
C17	775.00'	89.80'	S10°43'18"E	88.07'	0°00'04.6"
C20	725.00'	29.80'	N55°30'22"W	29.80'	0°22'20.5"
C25	775.00'	116.97'	S30°43'59"E	116.88'	0°02'38.1"
C26	775.00'	235.97'	S47°10'21"E	230.68'	1°02'33.0"
C27	775.00'	183.13'	S47°18'28"E	182.87'	1°16'38.0"
C28	775.00'	386.50'	S07°22'48"E	382.02'	3°03'18.5"
C29	415.00'	87.04'	N07°50'51"E	86.87'	0°22'50.0"
C30	385.00'	78.88'	S09°17'03"E	78.81'	1°20'20.1"
C31	385.00'	83.91'	N02°06'20"E	83.88'	0°22'23.2"
C32	720.00'	300.87'	S41°31'48"E	376.77'	2°05'54.6"
C33	775.00'	888.24'	S01°42'30"E	647.73'	49°24'11"
C36	775.00'	400.81'	N01°14'36"E	401.19'	3°00'00.0"
C38	725.00'	448.83'	S02°38'56"E	627.49'	51°17'04"
C39	725.00'	355.87'	S47°21'02"E	352.76'	2°07'11.2"



POINT OF COMMENCEMENT PHASE 4  
SOUTHWEST CORNER OF SECTION 31-23-27 RECORDED 6"x6" CONCRETE MONUMENT, NO ID, CCR#2967

POINT OF BEGINNING PHASE 4  
SOUTHWEST CORNER TRACT FD-3

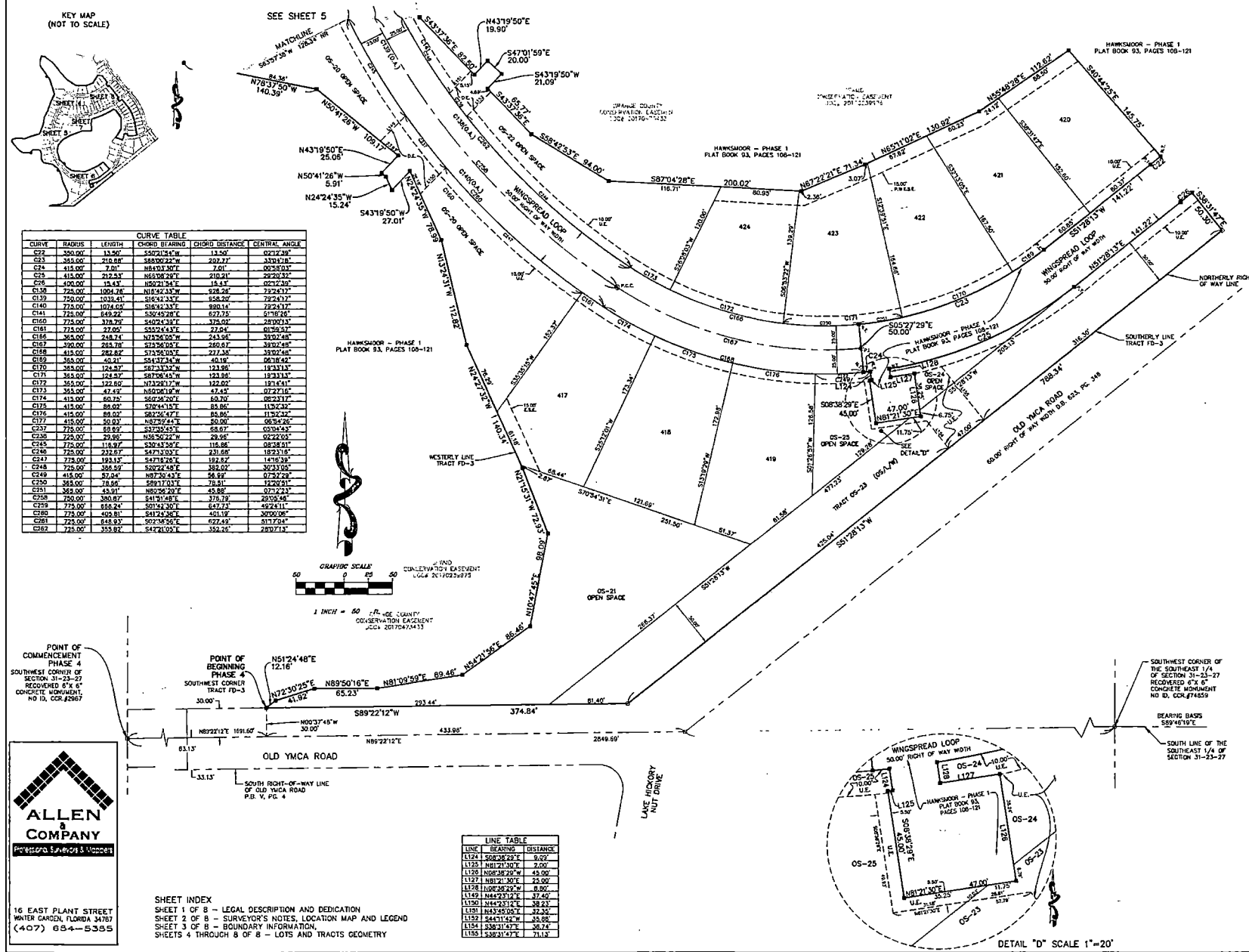
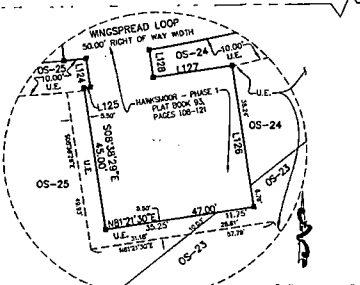
SOUTHWEST CORNER OF THE SOUTHWEST 1/4 OF SECTION 31-23-27 RECORDED 6"x6" CONCRETE MONUMENT NO ID, CCR#4659



16 EAST PLANT STREET  
WATER GARDEN, FLORIDA 34767  
(407) 654-5355

SHEET INDEX  
SHEET 1 OF 8 - LEGAL DESCRIPTION AND DEDICATION  
SHEET 2 OF 8 - SURVEYOR'S NOTES, LOCATION MAP AND LEGEND  
SHEET 3 OF 8 - BOUNDARY INFORMATION  
SHEETS 4 THROUGH 8 OF 8 - LOTS AND TRACTS GEOMETRY

LINE	BEARING	DISTANCE
L124	S08°28'27"E	9.00'
L125	N81°21'30"E	2.00'
L126	N08°38'29"W	49.00'
L127	N81°21'30"E	23.00'
L128	N08°38'29"W	8.00'
L129	N44°53'12"E	37.40'
L130	N44°53'12"E	38.23'
L131	N08°38'29"W	32.26'
L132	S44°11'42"W	33.88'
L133	S38°11'42"E	38.74'
L134	S38°11'42"E	71.13'



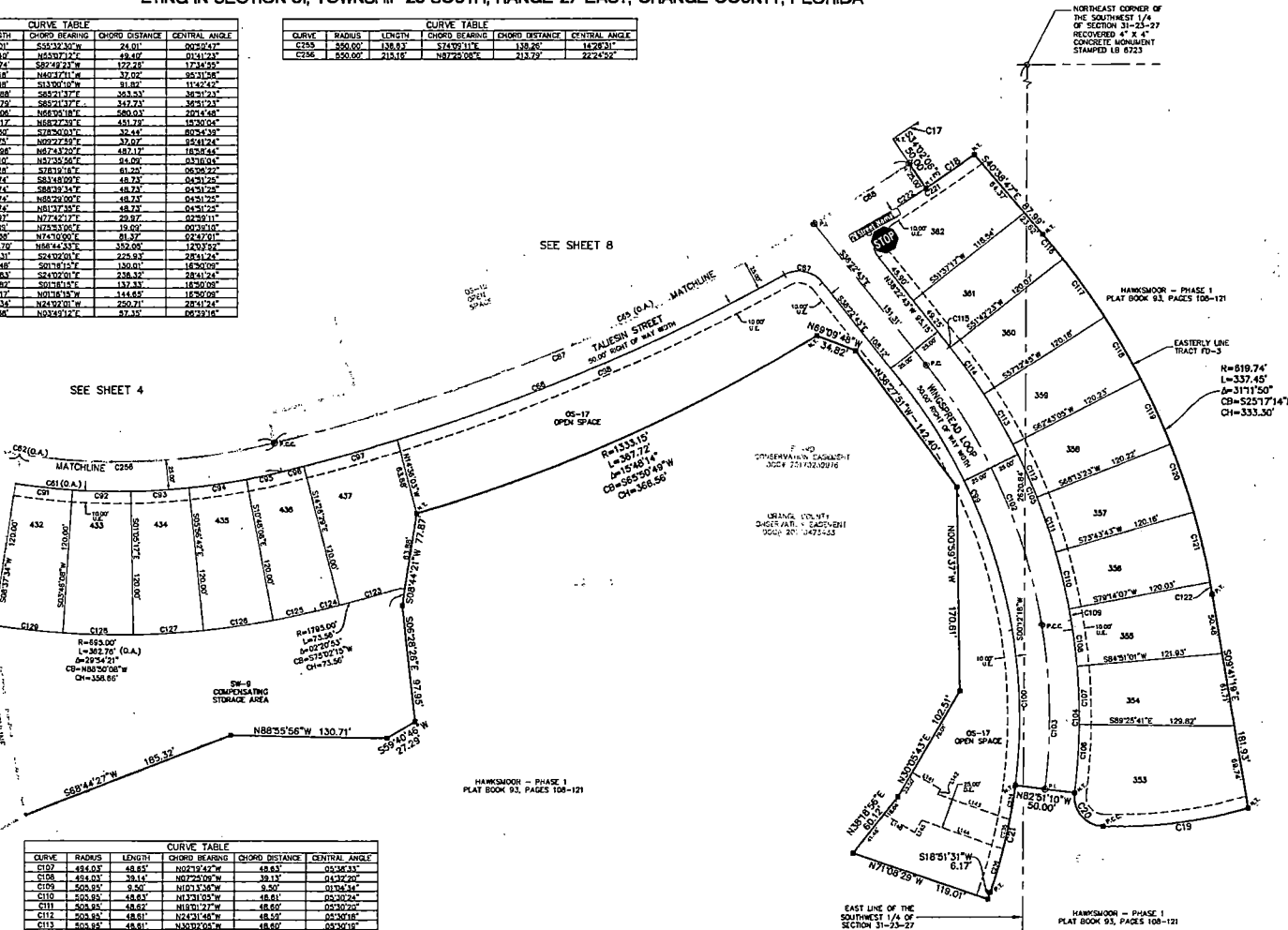


# HAWKSMOOR PHASE 4

A REPLAT OF TRACT FD-3 HAWKSMOOR - PHASE 1 AS RECORDED IN  
 PLAT BOOK 93, PAGES 108 THROUGH 121 OF THE PUBLIC RECORDS OF ORANGE COUNTY, FLORIDA,  
 LYING IN SECTION 31, TOWNSHIP 23 SOUTH, RANGE 27 EAST, ORANGE COUNTY, FLORIDA

CURVE	RADIUS	LENGTH	CHORD BEARING	CHORD DISTANCE	CENTRAL ANGLE
C17	1874.00	24.01	S51°32'37"W	24.01	00°29'47"
C18	1874.00	49.02	S65°07'37"W	49.02	01°24'23"
C19	450.00	124.74	S82°42'23"W	122.25	17°14'55"
C20	24.00	41.88	S89°47'11"W	37.02	50°31'28"
C21	450.00	91.89	S33°00'00"W	91.89	11°52'47"
C22	575.00	359.88	S85°21'37"E	363.53	38°31'23"
C23	1550.00	353.29	S85°21'37"E	352.73	38°31'23"
C24	1550.00	583.06	N05°00'00"E	580.03	20°14'48"
C25	1874.00	453.12	N58°27'30"E	451.28	10°30'04"
C26	24.00	35.52	N26°50'00"E	36.45	80°24'39"
C27	24.00	41.25	N02°27'57"E	37.02	85°41'24"
C28	1850.00	488.98	N87°43'22"E	487.17	18°38'44"
C29	1850.00	81.00	N87°43'22"E	81.00	01°24'23"
C30	575.00	81.28	S76°19'18"E	81.28	06°38'22"
C31	575.00	48.74	S83°48'00"E	48.74	04°31'25"
C32	575.00	48.74	S88°32'37"E	48.74	04°31'25"
C33	575.00	48.74	N85°28'00"E	48.74	04°31'25"
C34	575.00	48.74	N81°47'38"E	48.74	04°31'25"
C35	575.00	28.01	N77°52'17"E	28.01	02°29'11"
C36	1874.00	19.05	N73°33'00"E	19.05	00°33'10"
C37	1874.00	81.38	N71°00'00"E	81.38	02°42'21"
C38	1874.00	359.78	N68°44'53"E	359.00	10°12'23"
C39	454.85	224.31	S24°30'00"E	225.82	28°41'24"
C40	454.85	138.48	S01°18'17"E	138.01	18°30'00"
C41	454.85	240.83	S24°30'00"E	236.32	28°41'24"
C42	489.83	137.87	S01°18'17"E	137.33	18°30'00"
C43	489.83	149.12	N01°18'17"E	144.62	18°30'00"
C44	503.85	253.34	N24°32'01"W	250.71	28°41'24"
C45	489.83	57.38	N04°24'12"E	57.38	06°29'18"

CURVE	RADIUS	LENGTH	CHORD BEARING	CHORD DISTANCE	CENTRAL ANGLE
C25	1550.00	138.83	S74°02'11"E	138.86	14°28'31"
C26	1550.00	218.18	N87°28'00"E	213.29	22°45'52"

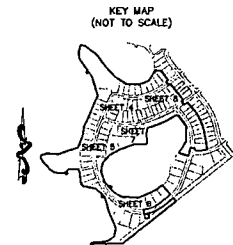


CURVE	RADIUS	LENGTH	CHORD BEARING	CHORD DISTANCE	CENTRAL ANGLE
C107	484.03	48.85	N02°19'42"W	48.83	04°36'33"
C108	484.03	39.18	N02°29'00"W	39.13	04°36'33"
C109	508.84	8.86	N02°13'26"W	8.90	01°58'54"
C110	508.84	48.83	N13°21'03"W	48.81	03°30'24"
C111	508.84	48.83	N18°01'17"W	48.80	05°02'22"
C112	508.84	48.81	N24°31'48"W	48.58	05°30'18"
C113	508.84	48.81	N30°02'03"W	48.60	03°30'18"
C114	508.84	48.82	N36°32'45"W	48.69	05°02'22"
C115	508.84	0.75	N58°20'10"W	0.76	00°05'06"
C116	819.74	28.59	S72°39'23"E	28.88	02°27'29"
C117	819.74	60.12	S35°35'48"E	60.14	05°13'45"
C118	819.74	60.12	S30°03'03"E	60.14	05°23'44"
C119	819.74	60.18	S24°31'18"E	60.14	05°23'44"
C120	819.74	60.12	S18°59'15"E	60.14	05°13'45"
C121	819.74	60.17	S13°22'30"E	60.14	03°13'45"
C122	819.74	60.07	S10°00'00"E	60.08	00°00'00"
C123	1785.00	51.11	S74°42'40"W	51.11	01°41'43"
C124	1785.00	20.45	S72°53'00"W	20.45	00°42'10"
C125	694.00	38.22	S77°42'17"W	38.22	02°36'11"
C126	694.00	58.82	S81°37'45"W	58.80	04°31'25"
C127	694.00	58.82	S86°28'00"W	58.80	04°31'25"
C128	694.00	29.82	S88°28'47"W	29.80	02°36'11"
C129	694.00	58.82	N83°48'00"E	58.80	04°31'25"
C301	1074.00	84.76	N53°47'48"E	84.76	03°02'00"
C302	1074.00	29.38	N58°35'17"E	29.38	01°04'41"
C303	450.00	28.81	N02°30'23"E	28.81	04°43'11"
C304	450.00	28.19	N12°28'12"E	28.18	02°12'28"
C305	450.00	37.68	N18°27'58"E	37.67	04°47'06"



16 EAST PLANT STREET  
 WINTER GARDEN, FLORIDA 34787  
 (407) 854-5355

**SHEET INDEX**  
 SHEET 1 OF 8 - LEGAL DESCRIPTION AND DEDICATION  
 SHEET 2 OF 8 - SURVEYOR'S NOTES, LOCATION MAP AND LEGEND  
 SHEET 3 OF 8 - BOUNDARY INFORMATION  
 SHEETS 4 THROUGH 8 OF 8 - LOTS AND TRACTS GEOMETRY



LINE	BEARING	DISTANCE
L141	S89°02'01"W	27.82
L142	S83°02'00"W	4.75
L143	N72°51'00"W	55.88
L144	N70°25'10"W	12.00
L145	N20°35'08"E	11.75
L146	N59°29'21"W	29.28

NORTHEAST CORNER OF THE SOUTHWEST 1/4 OF SECTION 31-23-27 RECOVERED 4" X 4" CONCRETE MONUMENT STAMPED LB 6723

H=619.74'  
 L=337.45'  
 Z=311°1'50"  
 CB=525°17'14"E  
 CI=333.30'



SOUTHWEST CORNER OF THE SOUTHWEST 1/4 OF SECTION 31-23-27 RECOVERED 6" X 6" CONCRETE MONUMENT NO. ID, COOK#74859

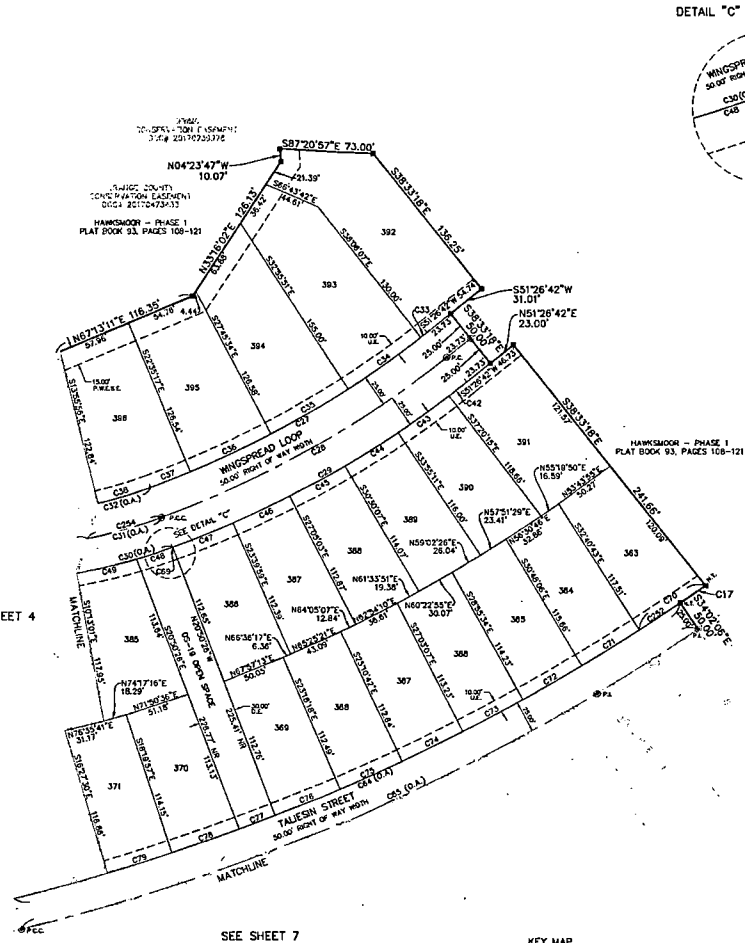
SOUTH LINE OF THE SOUTHWEST 1/4 OF SECTION 31-23-27

# HAWKSMOOR PHASE 4

A REPLAT OF TRACT FD-3 HAWKSMOOR - PHASE 1 AS RECORDED IN  
 PLAT BOOK 93, PAGES 108 THROUGH 121 OF THE PUBLIC RECORDS OF ORANGE COUNTY, FLORIDA,  
 LYING IN SECTION 31, TOWNSHIP 23 SOUTH, RANGE 27 EAST, ORANGE COUNTY, FLORIDA

CURVE TABLE					
CURVE	RADIUS	LENGTH	CHORD BEARING	CHORD DISTANCE	CENTRAL ANGLE
C17	1625.00'	24.01'	S53°32'30"W	24.01'	002°04'21"
C27	775.00'	249.50'	S50°40'11"W	248.48'	182°28'52"
C28	800.00'	232.61'	S50°00'17"W	236.45'	182°28'52"
C29	825.00'	265.69'	N50°40'11"E	264.51'	182°28'52"
C30	450.00'	245.51'	N50°41'27"E	242.48'	115°33'31"
C31	425.00'	231.87'	S50°31'27"E	229.00'	115°33'31"
C32	400.00'	218.23'	N50°31'27"E	215.53'	115°33'31"
C33	775.00'	8.13'	S51°40'17"W	8.13'	007°21'11"
C34	775.00'	69.89'	S50°20'19"W	69.92'	001°01'27"
C35	775.00'	69.85'	S50°39'18"W	69.92'	001°01'27"
C36	775.00'	69.95'	S54°58'45"W	69.92'	001°01'27"
C37	775.00'	81.56'	S50°32'29"W	81.56'	022°28'56"
C38	400.00'	43.10'	S72°38'32"W	43.07'	084°02'31"
C39	400.00'	67.83'	S62°00'17"W	67.78'	115°33'32"
C40	400.00'	67.91'	N58°47'07"W	67.78'	115°33'32"
C42	825.00'	17.53'	N52°03'18"E	17.53'	014°10'08"
C43	825.00'	49.21'	N54°22'17"E	49.21'	032°24'04"
C44	825.00'	49.21'	N57°47'21"E	49.21'	032°24'04"
C45	825.00'	49.21'	N61°32'24"E	49.21'	032°24'04"
C46	825.00'	49.23'	N54°37'25"E	49.21'	032°24'04"
C47	825.00'	50.87'	N58°08'00"E	50.85'	033°11'58"
C48	450.00'	28.83'	N71°25'11"E	28.82'	038°38'23"
C49	450.00'	48.03'	N76°43'32"E	48.01'	060°26'23"
C50	450.00'	48.51'	N82°32'18"E	48.48'	082°02'44"
C51	450.00'	48.51'	N89°02'30"E	48.48'	082°02'44"
C52	450.00'	48.51'	S84°48'38"E	48.48'	082°02'44"
C53	450.00'	22.37'	S90°18'03"E	22.37'	023°26'23"
C54	1650.00'	574.23'	S80°00'18"W	573.24'	201°14'48"
C55	1650.00'	563.08'	N58°35'18"E	560.03'	201°14'48"
C56	825.00'	8.41'	N69°32'50"E	8.41'	001°14'42"
C57	1625.00'	82.46'	S56°13'27"W	82.48'	023°21'11"
C58	1625.00'	53.23'	S58°13'36"W	53.23'	013°21'32"
C59	1625.00'	53.15'	S50°08'18"W	53.15'	013°21'31"
C60	1625.00'	53.16'	S50°00'38"W	53.16'	013°21'31"
C61	1625.00'	53.14'	S53°25'08"W	53.14'	013°21'28"
C62	1625.00'	53.15'	S58°35'36"W	53.15'	013°21'28"
C63	1625.00'	54.89'	S62°35'46"W	54.89'	013°21'00"
C64	1625.00'	30.00'	S83°09'34"W	30.00'	010°32'28"
C65	1625.00'	66.14'	S70°49'00"W	66.14'	015°44'46"
C66	1625.00'	53.15'	S72°28'40"W	53.15'	013°22'27"
C67	1625.00'	22.62'	S78°48'45"W	22.62'	004°21'51"
C68	1650.00'	498.96'	N67°43'20"E	497.17'	182°44'44"
C69	1650.00'	53.10'	N57°35'56"E	53.09'	013°21'04"
C70	1650.00'	55.47'	N50°19'36"E	55.47'	013°21'24"
C71	1650.00'	171.37'	N52°35'08"E	170.21'	233°08'10"
C72	425.00'	68.50'	N73°28'22"E	68.45'	080°22'25"

SEE SHEET 4

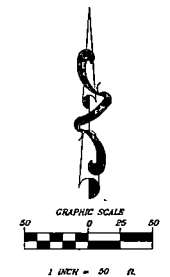


SEE SHEET 7

**ALLEN & COMPANY**  
 PROFESSIONAL SURVEYORS & MAPPERS

16 EAST PLANT STREET  
 WINTER GARDEN, FLORIDA 34787  
 (407) 854-5355

SHEET INDEX  
 SHEET 1 OF 8 - LEGAL DESCRIPTION AND DEDICATION  
 SHEET 2 OF 8 - SURVEYOR'S NOTES, LOCATION MAP AND LEGEND  
 SHEET 3 OF 8 - BOUNDARY INFORMATION  
 SHEETS 4 THROUGH 8 OF 8 - LOTS AND TRACTS GEOMETRY





# HAWKSMOOR PHASE 4

A REPLAT OF TRACT FD-3 HAWKSMOOR - PHASE 1 AS RECORDED IN  
 PLAT BOOK 93, PAGES 108 THROUGH 121 OF THE PUBLIC RECORDS OF ORANGE COUNTY, FLORIDA,  
 LYING IN SECTION 31, TOWNSHIP 23 SOUTH, RANGE 27 EAST, ORANGE COUNTY, FLORIDA

SHEET 2 OF 8

LEGEND:

D.B.	DEED BOOK	□	RECOVERED 4" X 4" CONCRETE MONUMENT LB 6723 PERMANENT REFERENCE MONUMENT, UNLESS OTHERWISE NOTED
P.C.	POINT OF CURVATURE		
P.C.C.	POINT OF COMPOUND CURVATURE	■	SET 4" X 4" CONCRETE MONUMENT STAMPED PRM LB 6723, UNLESS OTHERWISE NOTED
P.T.	POINT OF TANGENCY	⊙	SET NAIL AND DISK, STAMPED LB 6723 PERMANENT CONTROL POINT (PCP)
P.I.	POINT OF INTERSECTION		
N.T.	NON-TANGENT	R	RADIUS
CCR#	CERTIFIED CORNER RECORD	CB	CHORD BEARING
P.S.M.	PROFESSIONAL SURVEYOR AND MAPPER	CH	CHORD
R/W	RIGHT-OF-WAY	Δ	DELTA ANGLE
NR	NON-RADIAL	L	ARC LENGTH
LB	LICENSED BUSINESS	⊕	CENTERLINE
PRM	PERMANENT REFERENCE MONUMENT	O.A.	OVERALL
P.W.E.S.E.	PRIVATE WALL & ENVIRONMENTAL SWALE EASEMENT	DOC #	OFFICIAL RECORD DOCUMENT NUMBER OF THE PUBLIC RECORDS OF ORANGE COUNTY, FLORIDA
D.E.	DRAINAGE EASEMENT	E.S.E.	ENVIRONMENTAL SWALE EASEMENT
U.E.	UTILITY EASEMENT	O.C.A.E.	ORANGE COUNTY ACCESS EASEMENT
OS/L/W	OPEN SPACE/LANDSCAPE/WALL		
F.K.A.	FORMERLY KNOWN AS		

SURVEYOR'S NOTES:

- BEARINGS SHOWN HEREON ARE BASED ON THE SOUTH LINE OF THE SOUTHEAST 1/4 OF SECTION 31, TOWNSHIP 23 SOUTH, RANGE 27 EAST AS BEING SOUTH 89°46'19" EAST.
- ALL LOT LINES ARE RADIAL, UNLESS OTHERWISE NOTED NON-RADIAL ( NR ).
- ALL PLATTED UTILITY EASEMENTS SHALL ALSO BE EASEMENTS FOR THE CONSTRUCTION, INSTALLATION, MAINTENANCE, AND OPERATION OF CABLE TELEVISION SERVICES; PROVIDED, HOWEVER, NO SUCH CONSTRUCTION, INSTALLATION, MAINTENANCE, AND OPERATION OF CABLE TELEVISION SERVICES SHALL INTERFERE WITH THE FACILITIES AND SERVICES OF AN ELECTRIC, TELEPHONE, GAS, OR OTHER PUBLIC UTILITY. IN THE EVENT A CABLE TELEVISION COMPANY DAMAGES THE FACILITIES OF A PUBLIC UTILITY, IT SHALL BE SOLELY RESPONSIBLE FOR THE DAMAGES. THIS SECTION SHALL NOT APPLY TO THOSE PRIVATE EASEMENTS GRANTED TO OR OBTAINED BY A PARTICULAR ELECTRIC, TELEPHONE, GAS, OR OTHER PUBLIC UTILITY. SUCH CONSTRUCTION, INSTALLATION, MAINTENANCE, AND OPERATION SHALL COMPLY WITH THE NATIONAL ELECTRICAL SAFETY CODE AS ADOPTED BY THE FLORIDA PUBLIC SERVICE COMMISSION.
- THE LANDS SHOWN HEREON ARE SUBJECT TO THAT CERTAIN COMMUNITY DECLARATION FOR HAWKSMOOR RECORDED IN DOC# 20170516513 OF THE PUBLIC RECORDS OF ORANGE COUNTY, FLORIDA, AND ANY SUPPLEMENTS AND/OR AMENDMENTS THERETO (THE DECLARATION).
- TRACTS OS-17, OS-18, OS-19, OS-20, OS-21, OS-22, OS-24, AND OS-25 (OPEN SPACE) AND TRACT OS-23 (OPEN SPACE/LANDSCAPE/WALL) ARE COMMON AREAS AS DEFINED IN THE DECLARATION AND SHALL BE OWNED AND MAINTAINED BY THE HAWKSMOOR COMMUNITY OWNERS ASSOCIATION, INC. (THE ASSOCIATION).
- THE PRIVATE WALL & ENVIRONMENTAL SWALE EASEMENTS (P.W.E.S.E.) SHOWN HEREON ARE HEREBY DEDICATED TO AND SHALL BE MAINTAINED BY THE ASSOCIATION. NO CONSTRUCTION, CLEARING, GRADING OR ALTERATION IS PERMITTED WITHOUT PRIOR APPROVAL OF ORANGE COUNTY, FLORIDA AND/OR ALL OTHER APPLICABLE JURISDICTIONAL AGENCIES.
- TRACT SW-9 (COMPENSATING STORAGE AREA) SHALL BE DEDICATED TO AND MAINTAINED BY THE ASSOCIATION.
- THE ENVIRONMENTAL SWALE EASEMENT (E.S.E.) SHOWN HEREON IS HEREBY DEDICATED TO AND MAINTAINED BY THE ASSOCIATION. NO CONSTRUCTION, CLEARING, GRADING OR ALTERATION IS PERMITTED WITHOUT PRIOR APPROVAL OF ORANGE COUNTY, FLORIDA AND/OR ALL OTHER APPLICABLE JURISDICTIONAL AGENCIES.
- A UTILITY EASEMENT IS HEREBY DEDICATED TO THE PERPETUAL USE OF THE PUBLIC OVER THE ENTIRETY OF TRACT OS-23 (OPEN SPACE/LANDSCAPE/WALL).
- AN ACCESS EASEMENT (O.C.A.E.) IS HEREBY DEDICATED TO ORANGE COUNTY, FLORIDA OVER THE ENTIRETY OF TRACT SW-9 AS SPECIFIC ACCESS FOR THE CONSERVATION EASEMENT RECORDED IN DOC# 20170473433 OF THE PUBLIC RECORDS OF ORANGE COUNTY, FLORIDA.

KEY MAP  
(NOT TO SCALE)



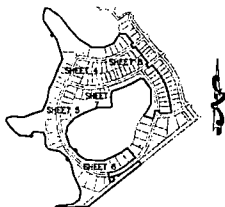
16 EAST PLANT STREET  
 WINTER GARDEN, FLORIDA 34787  
 (407) 694-5355

SHEET INDEX  
 SHEET 1 OF 8 - LEGAL DESCRIPTION AND DEDICATION  
 SHEET 2 OF 8 - SURVEYOR'S NOTES, LOCATION MAP AND LEGEND  
 SHEET 3 OF 8 - BOUNDARY INFORMATION,  
 SHEETS 4 THROUGH 8 OF 8 - LOTS AND TRACTS GEOMETRY

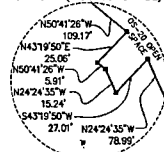
# HAWKSMOOR PHASE 4

A REPLAT OF TRACT FD-3 HAWKSMOOR - PHASE 1 AS RECORDED IN PLAT BOOK 93, PAGES 108 THROUGH 121 OF THE PUBLIC RECORDS OF ORANGE COUNTY, FLORIDA, LYING IN SECTION 31, TOWNSHIP 23 SOUTH, RANGE 27 EAST, ORANGE COUNTY, FLORIDA

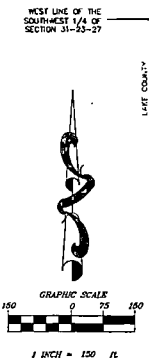
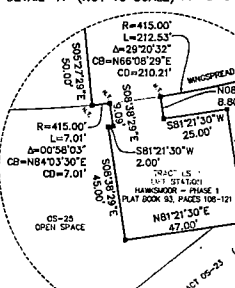
KEY MAP (NOT TO SCALE)



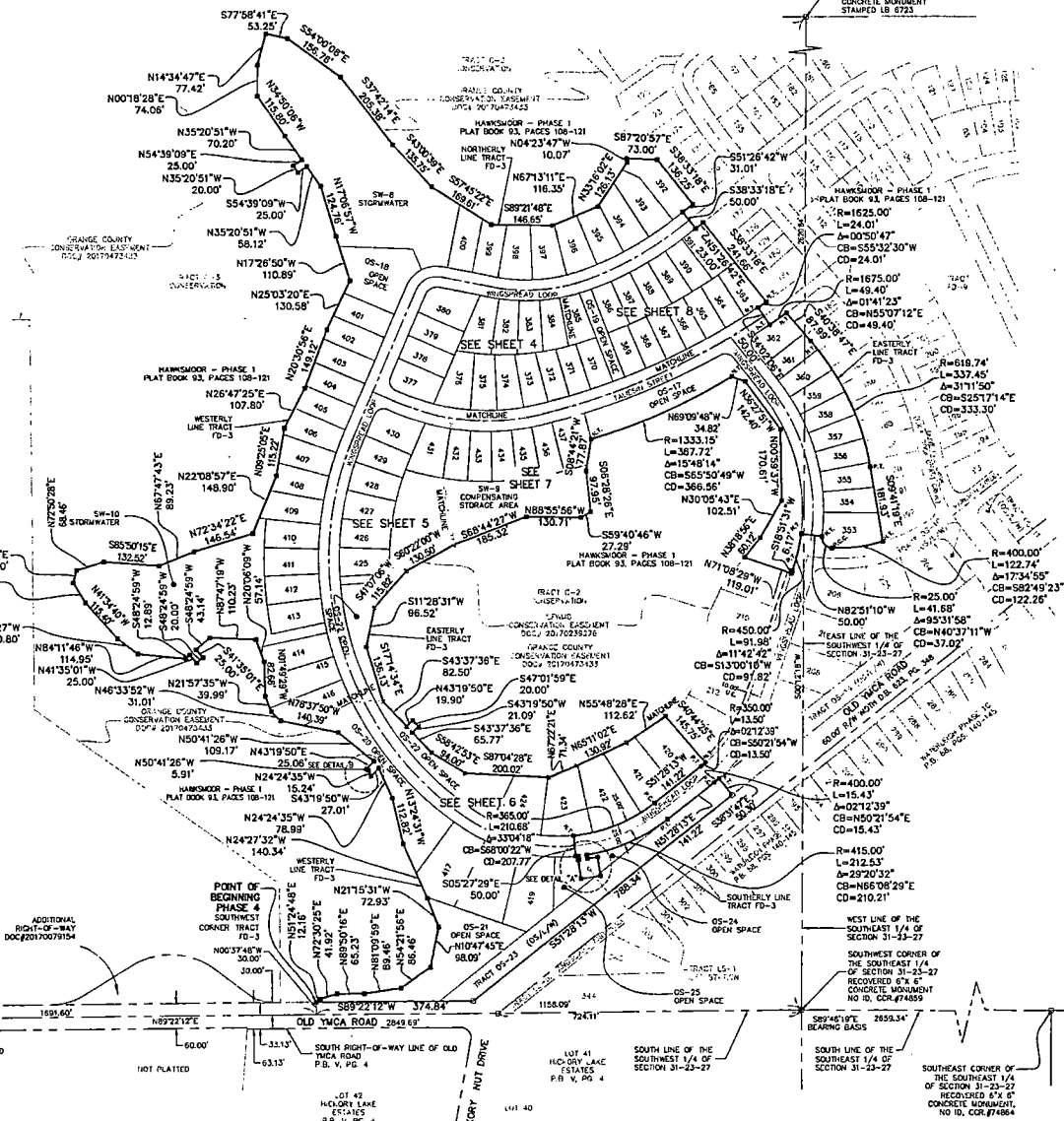
DETAIL B (NOT TO SCALE)



DETAIL "A" (NOT TO SCALE) NOT PLATTED



SHEET INDEX  
SHEET 1 OF 8 - LEGAL DESCRIPTION AND DEDICATION  
SHEET 2 OF 8 - SURVEYOR'S NOTES, LOCATION MAP AND LEGEND  
SHEET 3 OF 8 - BOUNDARY INFORMATION,  
SHEETS 4 THROUGH 8 OF 8 - LOTS AND TRACTS GEOMETRY



NORTHEAST CORNER OF THE SOUTHWEST 1/4 OF SECTION 31-23-27 RECOVERED 4" x 4" CONCRETE MONUMENT STAMPED LB 8763.

HAWKSMOOR - PHASE 1 PLAT BOOK 93, PAGES 108-121  
R=1625.00  
L=24.01  
Δ=00S047"  
CB=S5323030"W  
CD=24.01'

R=1675.00  
L=49.40  
Δ=014123"  
CB=N550712"E  
CD=49.40'

R=819.74  
L=337.45  
Δ=311500"  
CB=S251714"E  
CD=333.30'

R=400.00  
L=122.74  
Δ=173455"  
CB=S824923"W  
CD=122.26'

R=400.00  
L=15.43  
Δ=021239"  
CB=N502154"E  
CD=15.43'

R=415.00  
L=212.53  
Δ=292733"  
CB=N660829"E  
CD=210.21'

R=400.00  
L=15.43  
Δ=021239"  
CB=N502154"E  
CD=15.43'

R=415.00  
L=212.53  
Δ=292733"  
CB=N660829"E  
CD=210.21'

R=400.00  
L=15.43  
Δ=021239"  
CB=N502154"E  
CD=15.43'

R=415.00  
L=212.53  
Δ=292733"  
CB=N660829"E  
CD=210.21'

R=400.00  
L=15.43  
Δ=021239"  
CB=N502154"E  
CD=15.43'

R=415.00  
L=212.53  
Δ=292733"  
CB=N660829"E  
CD=210.21'

# HAWKSMOOR PHASE 4

A REPLAT OF TRACT FD-3 HAWKSMOOR - PHASE 1 AS RECORDED IN  
 PLAT BOOK 93, PAGES 108 THROUGH 121 OF THE PUBLIC RECORDS OF ORANGE COUNTY, FLORIDA,  
 LYING IN SECTION 31, TOWNSHIP 23 SOUTH, RANGE 27 EAST, ORANGE COUNTY, FLORIDA

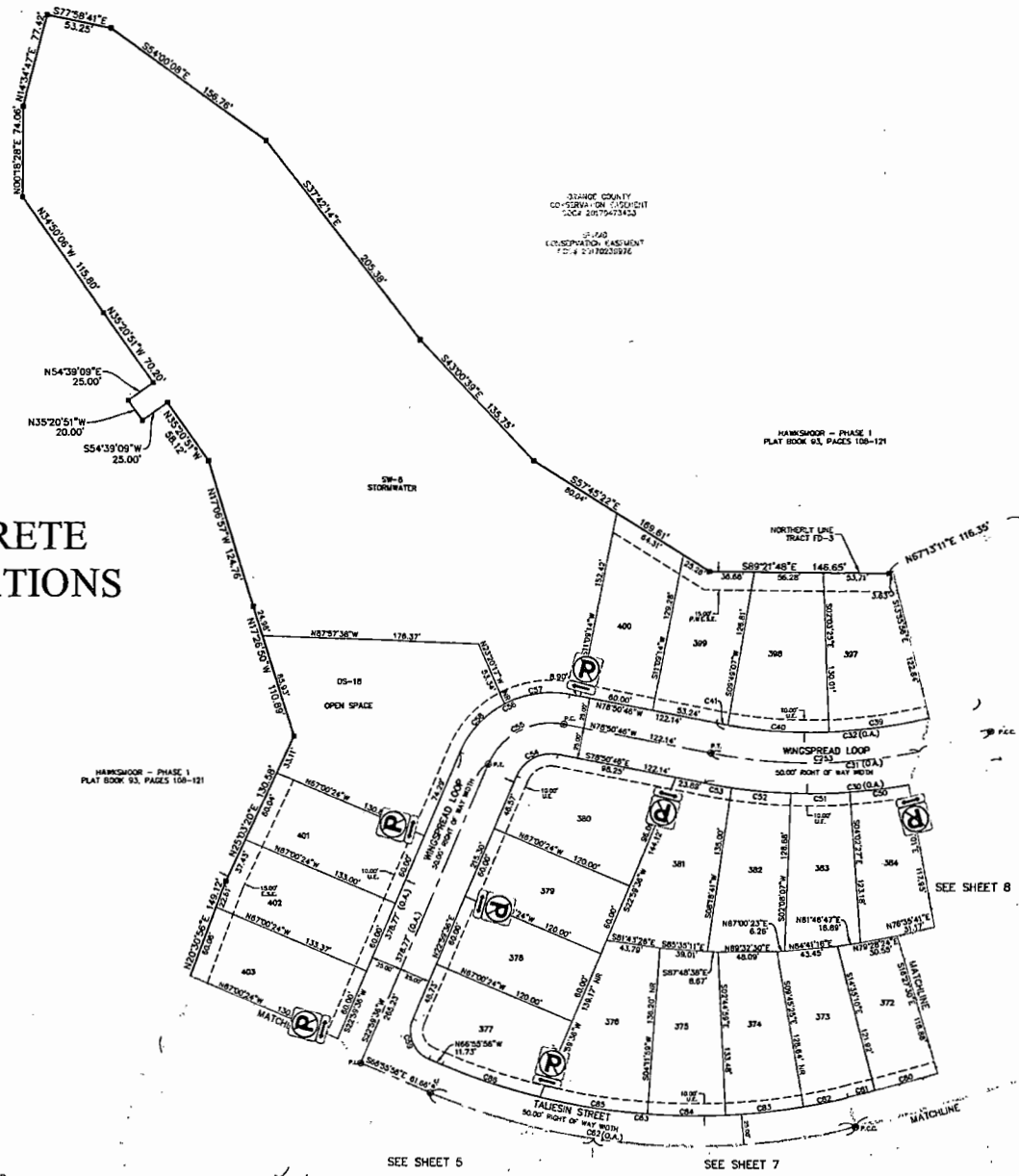
CURVE	RADIUS	LENGTH	CHORD BEARING	CHORD DISTANCE	CENTRAL ANGLE
C30	450.00'	245.51'	N65°31'27"E	242.48'	111°23'1"
C31	425.00'	231.87'	S85°31'27"W	229.00'	110°53'3"
C32	400.00'	218.22'	N65°31'27"E	215.53'	110°23'1"
C33	400.00'	43.10'	S72°28'52"W	43.07'	06°10'2"3"
C39	400.00'	82.91'	S62°30'11"W	82.76'	11°52'3"
C40	400.00'	92.81'	N69°30'00"W	92.76'	11°52'3"
C41	400.00'	8.37'	N79°30'49"W	8.37'	01°22'06"
C48	450.00'	23.63'	N10°48'31"E	23.62'	03°48'7"
C49	450.00'	48.03'	N10°48'31"E	48.01'	06°00'3"
C50	450.00'	48.51'	S82°27'16"E	48.48'	06°17'34"
C51	450.00'	48.51'	N82°27'16"E	48.48'	06°17'34"
C52	450.00'	48.51'	S81°58'30"E	48.48'	06°17'34"
C53	450.00'	22.32'	S80°40'00"E	22.32'	02°28'43"
C54	450.00'	49.90'	N82°28'35"E	49.87'	7°28'38"
C55	450.00'	28.03'	S82°28'35"W	28.03'	7°28'38"
C56	80.00'	109.13'	S82°28'35"W	100.87'	7°28'38"
C57	80.00'	54.57'	S1°30'48"W	54.51'	32°54'59"
C58	80.00'	54.57'	S47°32'00"W	53.51'	32°54'59"
C59	25.00'	33.24'	N11°38'10"E	33.33'	83°38'35"
C62	450.00'	353.79'	S89°21'48"E	347.12'	36°11'2"
C63	425.00'	337.71'	N85°21'47"W	331.92'	36°11'2"
C69	825.00'	9.41'	N83°25'46"E	9.41'	00°31'49"
C78	1825.00'	56.14'	S70°40'40"W	56.14'	01°58'46"
C79	1825.00'	53.12'	S72°36'17"W	53.12'	01°52'27"
C80	1825.00'	53.10'	S74°28'40"W	53.10'	01°52'27"
C81	1825.00'	22.82'	S73°48'48"W	22.82'	00°47'51"
C82	425.00'	37.43'	S73°34'36"W	37.44'	04°03'54"
C83	425.00'	43.90'	S63°45'18"W	43.90'	06°28'35"
C84	425.00'	43.98'	N89°33'31"W	43.88'	06°28'50"
C85	425.00'	88.84'	N85°34'51"W	88.82'	09°57'53"
C86	425.00'	83.45'	N85°34'48"W	83.46'	09°57'44"
C93	425.00'	171.47'	N89°38'09"E	170.81'	23°28'10"
C94	425.00'	80.50'	N73°38'22"E	80.49'	09°52'23"

**NO CONCRETE  
 INSTALLATIONS**



16 EAST PLANT STREET  
 WINTER GARDEN, FLORIDA 34787  
 (407) 654-5355

**SHEET INDEX**  
 SHEET 1 OF 8 - LEGAL DESCRIPTION AND DEDICATION  
 SHEET 2 OF 8 - SURVEYOR'S NOTES, LOCATION MAP AND LEGEND  
 SHEET 3 OF 8 - BOUNDARY INFORMATION  
 SHEETS 4 THROUGH 8 OF 8 - LOTS AND TRACTS GEOMETRY



SEE SHEET 5

SEE SHEET 7

SEE SHEET 8

ORANGE COUNTY  
 CO-ORDINATION DOCUMENT  
 CASE 2017-073433

FILED  
 LIC. SEPARATION CASE NUMBER  
 17-04-2-1700220996

HAWKSMOOR - PHASE 1  
 PLAT BOOK 93, PAGES 108-121

# HAWKSMOOR PHASE 4

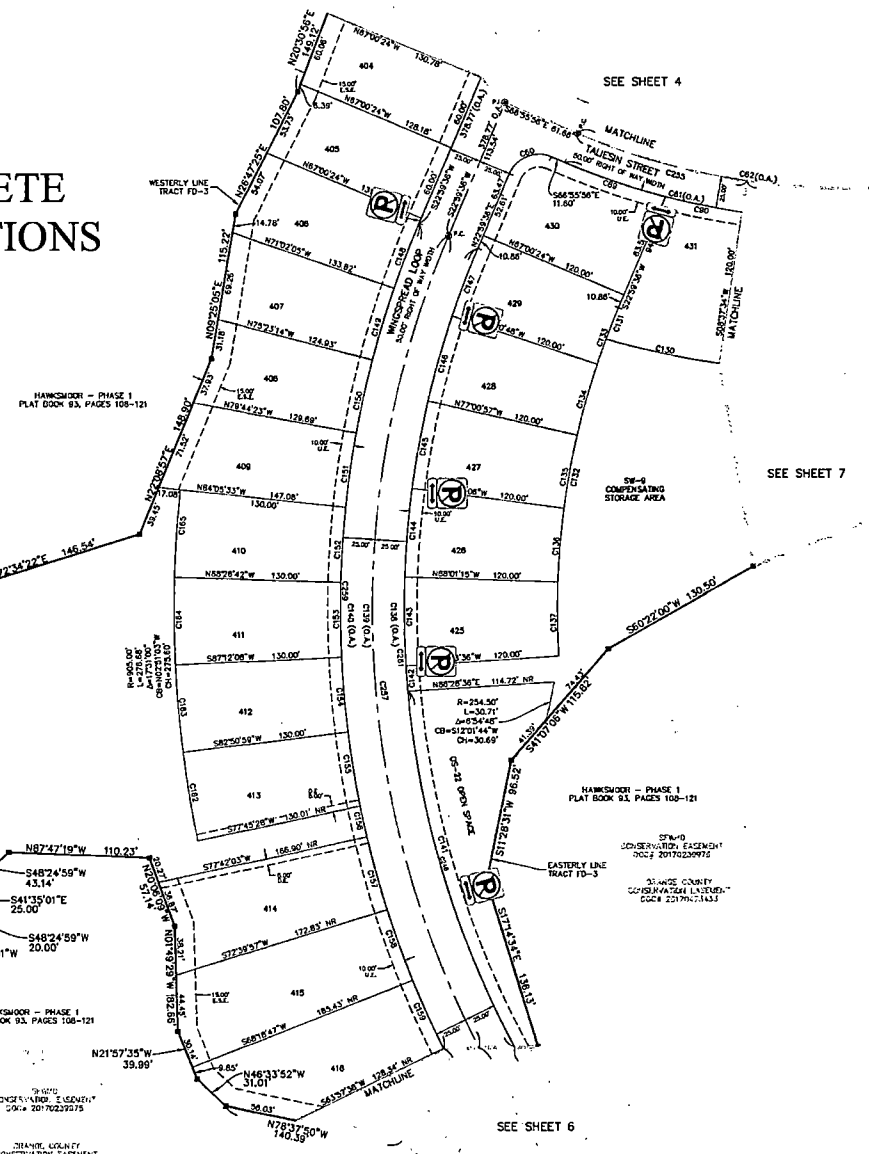
A REPLAT OF TRACT FD-3 HAWKSMOOR - PHASE 1 AS RECORDED IN  
 PLAT BOOK 93, PAGES 108 THROUGH 121 OF THE PUBLIC RECORDS OF ORANGE COUNTY, FLORIDA,  
 LYING IN SECTION 31, TOWNSHIP 23 SOUTH, RANGE 27 EAST, ORANGE COUNTY, FLORIDA

NO CONCRETE  
 INSTALLATIONS

CURVE TABLE					
CURVE	RADIUS	LENGTH	CHORD BEARING	CHORD DISTANCE	CENTRAL ANGLE
C60	228.00'	39.30'	N88°15'00"E	39.30'	89°24'00"
C61	574.00'	359.88'	S85°21'17"E	361.53'	36°30'23"
C62	550.00'	353.73'	S83°21'37"E	347.73'	36°30'23"
C63	574.00'	83.66'	S11°00'00"E	83.66'	08°20'00"
C64	574.00'	81.78'	S78°19'18"E	81.32'	08°36'22"
C130	603.00'	30.87'	N77°27'37"W	30.87'	07°29'50"
C131	603.00'	29.56'	S01°54'00"W	29.56'	02°30'54"
C132	603.00'	233.44'	S82°24'32"W	231.52'	24°30'06"
C133	603.00'	47.40'	S04°24'24"W	47.47'	04°30'06"
C134	603.00'	56.10'	S14°24'07"W	56.08'	05°30'09"
C135	603.00'	56.10'	S10°14'58"W	56.08'	05°30'09"
C136	603.00'	56.10'	S04°24'24"W	56.08'	05°30'09"
C137	603.00'	56.10'	S00°48'22"E	56.08'	05°30'09"
C138	725.00'	1004.70'	N16°42'31"W	926.26'	73°24'17"
C139	725.00'	1038.45'	S16°42'31"E	958.20'	73°24'17"
C140	725.00'	1074.00'	S16°42'31"E	990.14'	73°24'17"
C141	725.00'	849.22'	S30°45'28"E	827.73'	51°18'26"
C142	725.00'	70.00'	N04°18'30"W	70.00'	01°44'51"
C143	725.00'	89.63'	N00°46'20"W	89.60'	01°40'09"
C144	725.00'	89.63'	N04°43'48"E	89.60'	01°40'09"
C145	725.00'	89.63'	N10°13'58"E	89.60'	01°40'09"
C146	725.00'	89.63'	N16°44'07"E	89.60'	01°40'09"
C147	725.00'	87.00'	N04°42'47"E	87.00'	04°30'24"
C148	725.00'	54.49'	S30°24'48"W	54.47'	04°30'14"
C149	725.00'	56.87'	S18°47'21"W	56.85'	04°21'09"
C150	725.00'	56.87'	S12°22'15"W	56.85'	04°21'09"
C151	725.00'	56.87'	S08°02'02"W	56.85'	04°21'09"
C152	725.00'	56.87'	S03°43'37"W	56.85'	04°21'09"
C153	725.00'	56.87'	S00°27'17"E	56.85'	04°21'09"
C154	725.00'	56.87'	S04°26'27"E	56.85'	04°21'09"
C155	725.00'	56.87'	S09°11'36"E	56.85'	04°21'09"
C156	725.00'	24.84'	S78°19'18"E	24.83'	01°30'11"
C157	725.00'	56.03'	S15°31'17"E	56.03'	04°21'09"
C158	725.00'	56.87'	S18°24'47"E	56.85'	04°21'09"
C159	725.00'	56.87'	S24°15'48"E	56.85'	04°21'09"
C162	805.00'	70.43'	N09°22'42"W	70.41'	04°22'33"
C163	805.00'	68.72'	N04°26'22"W	68.73'	04°21'09"
C164	805.00'	68.72'	N00°37'17"W	68.73'	04°21'09"
C165	805.00'	68.72'	N04°15'27"E	68.73'	04°21'09"
C236	350.00'	130.65'	S74°09'11"E	130.68'	14°24'31"
C238	350.00'	215.16'	N87°25'08"E	213.78'	22°24'52"
C239	350.00'	208.55'	S10°29'40"E	207.95'	20°16'31"
C240	350.00'	200.87'	S11°14'58"E	200.78'	20°02'46"
C259	725.00'	858.24'	S01°42'30"E	847.73'	49°24'11"
C260	725.00'	808.81'	S14°14'38"E	801.19'	36°06'08"
C261	725.00'	848.93'	S02°38'56"E	827.49'	31°57'04"
C262	725.00'	355.87'	S42°21'02"E	352.28'	28°07'13"



SHEET INDEX  
 SHEET 1 OF 8 - LEGAL DESCRIPTION AND DEDICATION  
 SHEET 2 OF 8 - SURVEYOR'S NOTES, LOCATION MAP AND LEGEND  
 SHEET 3 OF 8 - BOUNDARY INFORMATION  
 SHEETS 4 THROUGH 8 OF 8 - LOTS AND TRACTS GEOMETRY



HAWKSMOOR - PHASE 1  
 PLAT BOOK 93, PAGES 108-121

HAWKSMOOR - PHASE 1  
 PLAT BOOK 93, PAGES 108-121

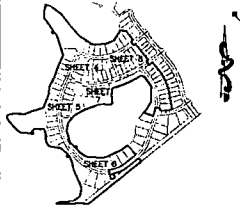
ORANGE COUNTY  
 CONSERVATION EASEMENT  
 OCCA 20170472433

ORANGE COUNTY  
 CONSERVATION EASEMENT  
 OCCA 20170472433

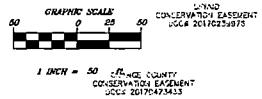
# HAWKSMOOR PHASE 4

A REPLAT OF TRACT FD-3 HAWKSMOOR - PHASE 1 AS RECORDED IN PLAT BOOK 93, PAGES 108 THROUGH 121 OF THE PUBLIC RECORDS OF ORANGE COUNTY, FLORIDA, LYING IN SECTION 31, TOWNSHIP 23 SOUTH, RANGE 27 EAST, ORANGE COUNTY, FLORIDA

KEY MAP  
(NOT TO SCALE)



CURVE	RADIUS	LENGTH	CHORD BEARING	CHORD DISTANCE	CENTRAL ANGLE
C27	350.00'	13.50'	S80°21'34"W	13.50'	02°12'28"
C28	363.00'	20.00'	S81°00'27"W	20.00'	03°04'01"
C29	415.00'	7.01'	N84°01'30"E	7.01'	00°08'03"
C30	415.00'	212.84'	N85°08'29"E	210.21'	28°20'32"
C31	400.00'	15.43'	N50°21'54"E	15.43'	02°12'28"
C32	725.00'	1004.74'	N18°42'33"W	928.29'	79°24'17"
C33	750.00'	1039.41'	S18°42'33"E	958.20'	79°24'17"
C34	724.00'	1024.00'	S19°52'13"E	950.14'	79°24'17"
C35	724.00'	149.22'	S30°43'28"E	622.73'	51°18'26"
C36	724.00'	218.78'	S42°23'33"E	378.00'	28°01'14"
C37	724.00'	27.00'	S52°43'57"E	27.00'	01°30'57"
C38	363.00'	249.74'	N73°36'00"W	243.94'	33°02'48"
C39	300.00'	308.78'	S73°36'00"E	268.87'	33°02'48"
C40	415.00'	282.62'	S75°56'05"E	277.38'	32°02'48"
C41	363.00'	49.21'	S54°17'34"W	49.19'	06°18'42"
C42	363.00'	124.37'	S57°33'37"E	123.95'	19°33'11"
C43	363.00'	124.37'	S87°06'44"W	123.85'	19°33'11"
C44	363.00'	122.69'	N73°28'17"E	122.00'	19°14'41"
C45	363.00'	47.48'	N50°00'30"W	47.45'	02°27'04"
C46	415.00'	60.72'	S63°38'20"E	60.70'	08°23'17"
C47	415.00'	60.02'	S72°44'35"E	60.86'	11°24'34"
C48	415.00'	60.02'	S82°28'47"E	60.86'	11°24'34"
C49	415.00'	60.02'	N87°39'44"E	60.00'	05°54'28"
C50	725.00'	68.69'	S77°25'45"E	68.67'	03°04'42"
C51	725.00'	29.58'	N38°30'22"W	29.58'	02°22'25"
C52	725.00'	115.87'	S38°43'58"E	118.88'	08°38'51"
C53	725.00'	232.07'	S47°19'37"E	231.69'	19°21'04"
C54	725.00'	183.13'	S47°18'20"E	182.82'	16°16'38"
C55	725.00'	389.62'	S22°24'48"E	383.02'	20°31'02"
C56	415.00'	37.04'	N57°20'53"E	38.99'	07°22'02"
C57	363.00'	78.66'	S81°17'03"E	78.51'	14°20'21"
C58	363.00'	35.81'	N50°30'20"E	35.83'	07°12'23"
C59	725.00'	300.87'	S41°10'48"E	318.29'	28°55'45"
C60	725.00'	638.24'	S01°42'30"E	637.73'	48°24'11"
C61	725.00'	608.81'	S41°28'48"E	451.19'	30°08'08"
C62	725.00'	648.93'	S02°38'56"E	627.45'	21°17'24"
C63	725.00'	355.92'	S42°21'09"E	352.28'	28°17'18"



POINT OF COMMENCEMENT PHASE 4  
SOUTHWEST CORNER OF SECTION 31-23-27  
RECOVERED 6"x6" CONCRETE MONUMENT  
NO. 10, COR.#2887

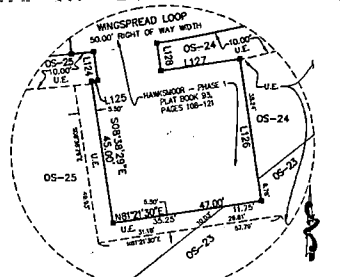
POINT OF BEGINNING PHASE 4  
SOUTHWEST CORNER TRACT FD-3



16 EAST PLANT STREET  
WINTER GARDEN, FLORIDA 34787  
(407) 854-5355

SHEET INDEX  
SHEET 1 OF 8 - LEGAL DESCRIPTION AND DEDICATION  
SHEET 2 OF 8 - SURVEYOR'S NOTES, LOCATION MAP AND LEGEND  
SHEET 3 OF 8 - BOUNDARY INFORMATION  
SHEETS 4 THROUGH 8 OF 8 - LOTS AND TRACTS GEOMETRY

LINE	BEARING	DISTANCE
L124	S06°38'24"E	9.02'
L125	N81°21'30"E	7.00'
L126	N08°48'29"W	45.00'
L127	N81°21'30"E	23.00'
L128	N08°38'20"W	0.80'
L129	N84°23'12"E	37.40'
L130	N44°23'12"E	38.23'
L131	N84°38'00"E	32.35'
L132	S41°11'42"W	35.88'
L133	S89°14'47"E	36.74'
L134	S38°11'47"E	71.12'



**NO CONCRETE INSTALLATIONS**

SOUTHWEST CORNER OF THE SOUTHWEST 1/4 OF SECTION 31-23-27 RECOVERED 6"x6" CONCRETE MONUMENT NO. 10, COR.#2887

BEARING BASIS S89°46'19"E

SOUTH LINE OF THE SOUTHWEST 1/4 OF SECTION 31-23-27

DETAIL "D" SCALE 1"=20'



# HAWKSMOOR PHASE 4

A REPLAT OF TRACT FD-3 HAWKSMOOR - PHASE 1 AS RECORDED IN  
 PLAT BOOK 93, PAGES 108 THROUGH 121 OF THE PUBLIC RECORDS OF ORANGE COUNTY, FLORIDA,  
 LYING IN SECTION 31, TOWNSHIP 23 SOUTH, RANGE 27 EAST, ORANGE COUNTY, FLORIDA

CURVE	RADIUS	LENGTH	CHORD BEARING	CHORD DISTANCE	CENTRAL ANGLE
C17	1824.00'	24.01'	S53°32'30"W	24.01'	002°24'27"
C18	1878.00'	43.80'	S53°32'30"W	43.80'	01°14'23"
C19	400.00'	127.74'	S82°49'23"W	122.26'	173°54'54"
C20	24.00'	41.88'	N49°24'11"W	37.02'	83°11'58"
C21	450.00'	51.98'	S13°00'00"W	51.98'	115°44'42"
C22	578.00'	349.84'	S85°21'37"E	363.53'	302°12'21"
C23	550.00'	343.79'	S85°21'37"E	342.73'	303°11'23"
C24	1850.00'	543.00'	N85°03'18"E	560.03'	201°14'58"
C25	1878.00'	453.17'	N82°22'49"E	451.78'	153°20'04"
C26	24.00'	35.30'	S78°30'03"E	35.44'	80°24'38"
C27	24.00'	41.78'	N07°22'39"E	33.02'	85°14'24"
C28	1850.00'	488.98'	N82°43'20"E	497.13'	182°24'44"
C29	1850.00'	84.30'	S82°43'20"E	84.00'	031°08'04"
C30	578.00'	61.28'	S78°18'16"E	61.25'	08°06'24"
C31	578.00'	48.74'	S83°48'09"E	48.73'	04°51'22"
C32	578.00'	48.74'	S82°28'45"E	48.73'	04°51'22"
C33	578.00'	48.74'	N86°28'06"E	48.73'	04°51'22"
C34	578.00'	48.74'	N81°32'45"E	48.73'	04°51'22"
C35	578.00'	29.87'	N77°24'7"E	29.87'	02°03'11"
C36	1878.00'	19.02'	N73°35'06"E	19.00'	00°22'10"
C37	1878.00'	31.38'	S74°10'00"E	31.37'	02°47'01"
C38	1878.00'	302.00'	N68°44'37"E	333.09'	120°32'00"
C39	453.93'	228.31'	S74°02'01"E	225.93'	28°41'24"
C40	444.04'	130.88'	S01°36'15"E	130.01'	18°20'02"
C41	490.83'	240.84'	S24°02'01"E	238.23'	08°14'24"
C42	489.03'	137.87'	S01°41'15"E	137.33'	18°20'02"
C43	484.03'	143.77'	N01°04'28"E	144.82'	02°03'11"
C44	503.84'	253.54'	N42°02'01"W	250.71'	28°41'24"
C45	424.03'	57.38'	N02°42'22"E	57.35'	08°23'14"

CURVE	RADIUS	LENGTH	CHORD BEARING	CHORD DISTANCE	CENTRAL ANGLE
C255	350.00'	138.63'	S74°W 11"E	138.26'	142°8'31"
C256	350.00'	218.18'	N87°23'00"E	213.79'	272°45'27"

SEE SHEET 4

SEE SHEET 6

SEE SHEET 5

**NO CONCRETE INSTALLATIONS**

CURVE	RADIUS	LENGTH	CHORD BEARING	CHORD DISTANCE	CENTRAL ANGLE
C107	484.03'	48.83'	N02°13'42"W	48.83'	05°36'23"
C108	484.03'	97.67'	N02°13'42"W	97.67'	04°13'20"
C109	503.84'	8.90'	N01°13'08"W	8.90'	03°04'24"
C110	503.84'	48.63'	N13°11'05"W	48.61'	05°30'24"
C111	503.84'	48.63'	N18°01'27"E	48.60'	03°36'20"
C112	503.84'	48.61'	N24°31'48"W	48.58'	05°30'18"
C113	503.84'	48.61'	N30°22'09"W	48.60'	05°30'18"
C114	503.84'	48.62'	N35°12'28"W	48.60'	05°30'18"
C115	503.84'	8.78'	N38°22'10"W	8.78'	00°05'08"
C116	619.74'	28.29'	S18°38'24"E	28.29'	02°27'29"
C117	619.74'	60.17'	S18°38'45"E	60.14'	02°33'52"
C118	619.74'	60.17'	S30°02'03"E	60.14'	05°33'44"
C119	619.74'	60.16'	S44°31'19"E	60.14'	05°33'44"
C120	619.74'	60.17'	S18°37'25"E	60.14'	05°33'52"
C121	619.74'	60.17'	S13°23'50"E	60.14'	05°33'42"
C122	619.74'	10.88'	S10°02'06"E	10.88'	00°53'38"
C123	1785.00'	43.11'	S74°45'40"W	43.11'	01°41'43"
C124	1785.00'	20.44'	S78°53'08"W	20.45'	00°39'10"
C125	683.00'	38.22'	S72°42'17"W	38.22'	02°36'11"
C126	683.00'	58.82'	S81°32'35"W	58.90'	04°31'25"
C127	683.00'	58.82'	S88°28'00"W	58.90'	04°31'25"
C128	683.00'	58.82'	N88°28'34"W	58.90'	04°31'25"
C129	683.00'	58.82'	N83°48'08"W	58.90'	04°31'25"
C221	1878.00'	88.78'	N53°42'30"E	88.78'	03°02'10"
C222	1878.00'	32.80'	N30°38'17"E	32.80'	01°04'47"
C223	450.00'	28.21'	N59°30'42"E	28.21'	03°43'11"
C224	450.00'	28.17'	N42°23'33"E	28.17'	03°42'27"
C225	450.00'	37.58'	N42°23'33"E	37.57'	04°17'06"

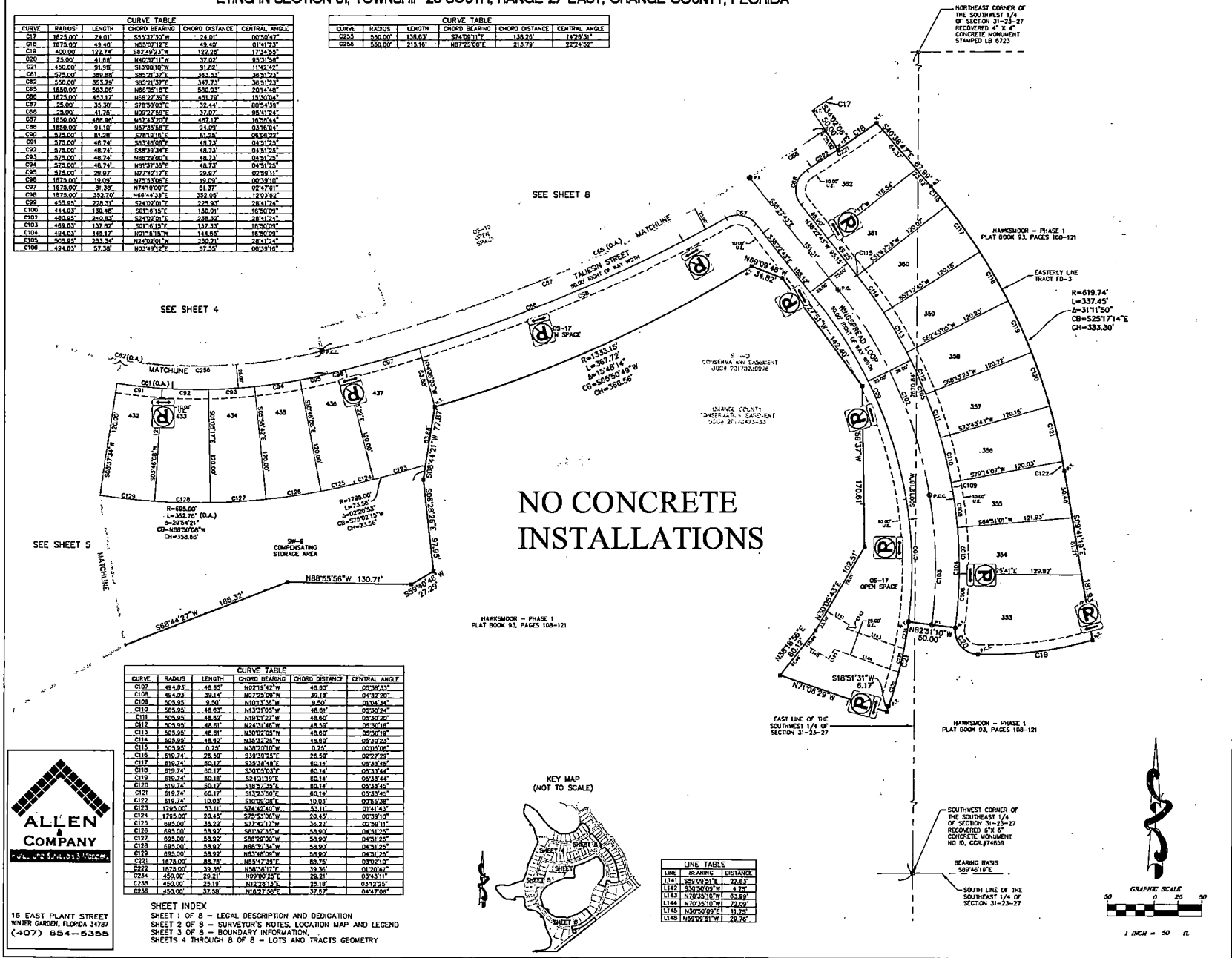
**SHEET INDEX**  
 SHEET 1 OF 8 - LEGAL DESCRIPTION AND CALCULATION  
 SHEET 2 OF 8 - SURVEYOR'S NOTES, LOCATION MAP AND LEGEND  
 SHEET 3 OF 8 - BOUNDARY INFORMATION  
 SHEETS 4 THROUGH 8 OF 8 - LOTS AND TRACTS GEOMETRY



16 EAST PLANT STREET  
 WINTER GARDEN, FLORIDA 34787  
 (407) 654-5355



LINE	BEARING	DISTANCE
L141	S29°29'51"E	27.63'
L142	S30°02'07"W	4.72'
L143	N22°55'10"W	63.89'
L144	N22°55'10"W	22.09'
L145	N30°36'09"E	11.72'
L146	N60°02'01"W	29.78'



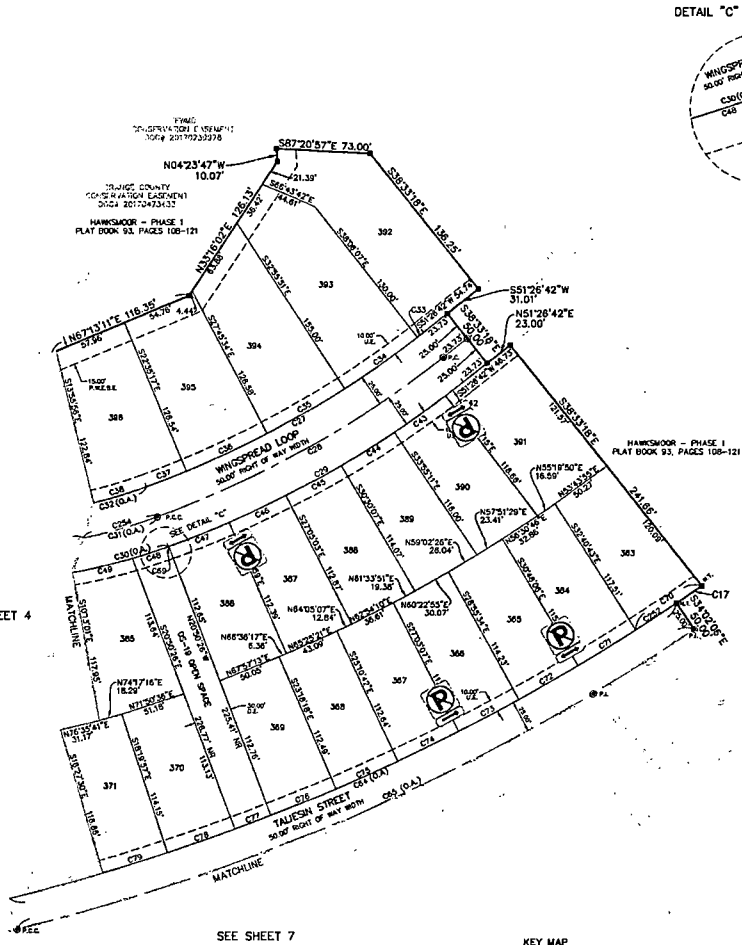
# HAWKSMOOR PHASE 4

A REPLAT OF TRACT FD-3 HAWKSMOOR - PHASE 1 AS RECORDED IN  
 PLAT BOOK 93, PAGES 108 THROUGH 121 OF THE PUBLIC RECORDS OF ORANGE COUNTY, FLORIDA,  
 LYING IN SECTION 31, TOWNSHIP 23 SOUTH, RANGE 27 EAST, ORANGE COUNTY, FLORIDA

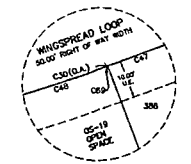
CURVE	RADIUS	LENGTH	CHORD BEARING	CHORD DISTANCE	CENTRAL ANGLE
C27	1828.00'	24.00'	S84°32'30"W	24.00'	00°00'41"
C27	778.00'	249.56'	S50°40'11"W	248.48'	18°28'52"
C28	800.00'	292.71'	S50°40'11"W	288.48'	18°28'52"
C29	828.00'	288.90'	N50°40'11"E	284.50'	18°28'52"
C30	450.00'	243.51'	N82°31'27"E	242.48'	11°18'33"
C31	828.00'	288.87'	S82°31'27"W	288.00'	11°18'33"
C32	400.00'	218.57'	N82°31'27"E	218.53'	00°21'07"
C33	778.00'	8.13'	S11°48'17"W	8.13'	00°27'31"
C34	778.00'	68.89'	S84°29'07"W	68.92'	00°10'17"
C35	778.00'	68.89'	S84°29'16"W	68.92'	00°10'17"
C36	778.00'	68.89'	S84°49'34"W	68.92'	00°10'17"
C37	778.00'	33.50'	S68°39'37"W	33.58'	02°28'50"
C38	400.00'	43.10'	S72°30'32"W	43.07'	08°10'23"
C39	400.00'	82.21'	S82°30'32"W	82.22'	11°47'32"
C40	400.00'	82.21'	N88°07'07"E	82.22'	11°47'32"
C42	828.00'	17.53'	N52°03'14"E	17.53'	01°13'03"
C43	828.00'	48.21'	N51°22'17"E	48.21'	03°24'04"
C44	828.00'	48.21'	N51°37'01"E	48.21'	03°28'04"
C45	828.00'	48.21'	N81°12'24"E	48.21'	03°28'04"
C46	828.00'	48.21'	N84°37'29"E	48.21'	03°28'04"
C47	828.00'	50.87'	N53°06'50"E	50.86'	03°31'56"
C48	450.00'	22.83'	N71°48'31"E	22.82'	03°46'21"
C49	450.00'	48.51'	N76°45'00"E	48.51'	04°09'21"
C50	450.00'	48.51'	N82°32'18"E	48.48'	08°10'34"
C51	450.00'	48.51'	N89°32'50"E	48.48'	08°10'34"
C52	450.00'	48.51'	S84°46'30"E	48.48'	08°10'34"
C53	450.00'	22.37'	S80°14'53"E	22.32'	02°30'33"
C54	1828.00'	578.28'	S80°10'16"W	571.24'	20°14'56"
C55	1828.00'	363.00'	N88°01'18"E	360.03'	20°14'56"
C49	828.00'	0.41'	N82°32'50"E	0.41'	00°01'42"
C70	1828.00'	69.48'	S58°11'29"W	68.48'	02°21'11"
C71	1828.00'	63.23'	S58°19'36"W	63.23'	01°37'37"
C72	1828.00'	63.19'	S80°08'10"W	63.19'	01°27'21"
C73	1828.00'	63.18'	S82°00'36"W	63.18'	01°25'22"
C74	1828.00'	63.14'	S83°13'04"W	63.14'	01°22'22"
C75	1828.00'	63.13'	S85°43'40"W	63.13'	01°22'24"
C76	1828.00'	63.89'	S87°07'48"W	63.89'	01°20'08"
C77	1828.00'	30.00'	S83°02'15"W	30.00'	01°13'22"
C78	1828.00'	58.14'	S70°40'40"W	58.14'	01°28'56"
C79	1828.00'	63.19'	S72°36'17"W	63.19'	01°27'20"
C80	1828.00'	63.10'	S74°28'10"W	63.10'	01°27'20"
C81	1828.00'	22.67'	S75°58'48"W	22.62'	00°54'21"
C82	1828.00'	488.85'	N87°43'27"E	487.77'	18°58'44"
C86	1828.00'	64.10'	N72°35'58"E	64.02'	03°18'04"
C232	1828.00'	38.47'	N88°38'30"E	38.47'	02°21'24"
C233	428.00'	171.37'	N82°36'09"E	170.21'	23°08'10"
C194	428.00'	60.50'	N74°50'22"E	60.42'	08°02'22"

SEE SHEET 4

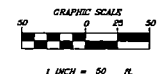
**NO CONCRETE  
 INSTALLATIONS**



DETAIL "C" (NOT TO SCALE)



KEY MAP (NOT TO SCALE)



**ALLEN & COMPANY**  
 Surveyors, Engineers, Planners & Architects

16 EAST PLANT STREET  
 WINTER GARDEN, FLORIDA 34787  
 (407) 654-5355

**SHEET INDEX**  
 SHEET 1 OF 8 - LEGAL DESCRIPTION AND DEDICATION  
 SHEET 2 OF 8 - SURVEYOR'S NOTES, LOCATION MAP AND LEGEND  
 SHEET 3 OF 8 - BOUNDARY INFORMATION  
 SHEETS 4 THROUGH 8 OF 8 - LOTS AND TRACTS GEOMETRY