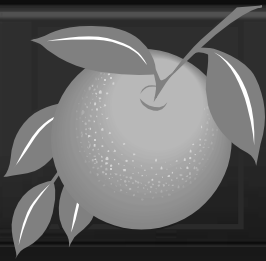


Board of County Commissioners

Public Hearings

March 15, 2016



Boggy Creek Crossings PD / Boggy Creek Crossings Preliminary Subdivision Plan (PSP)

Case: PSP-15-01-031

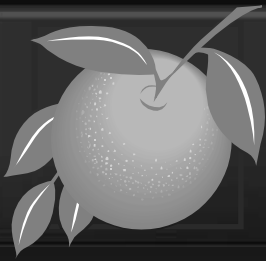
Project: Boggy Creek Crossings PD / Boggy Creek Crossings PSP

Applicant: Rick Merkel, Highland Engineering, Inc.

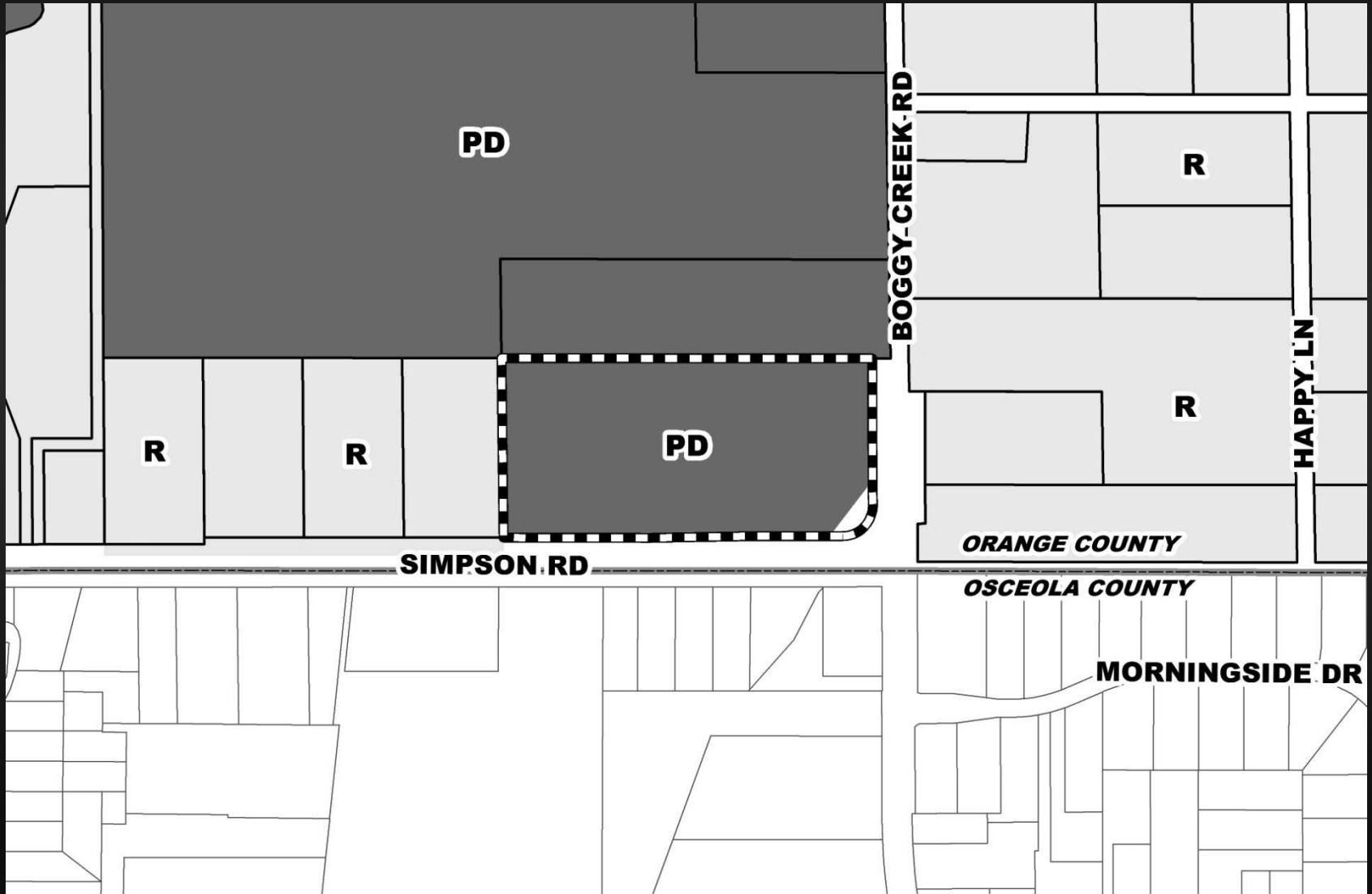
District: 4

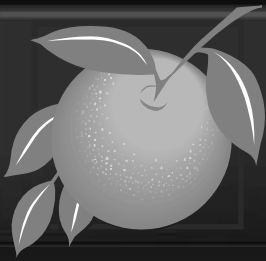
Acreage: 16.78 gross acres

Request: To subdivide 16.78 acres into four (4) lots for a maximum of 170,000 square feet of C-1 (Retail Commercial District) uses.

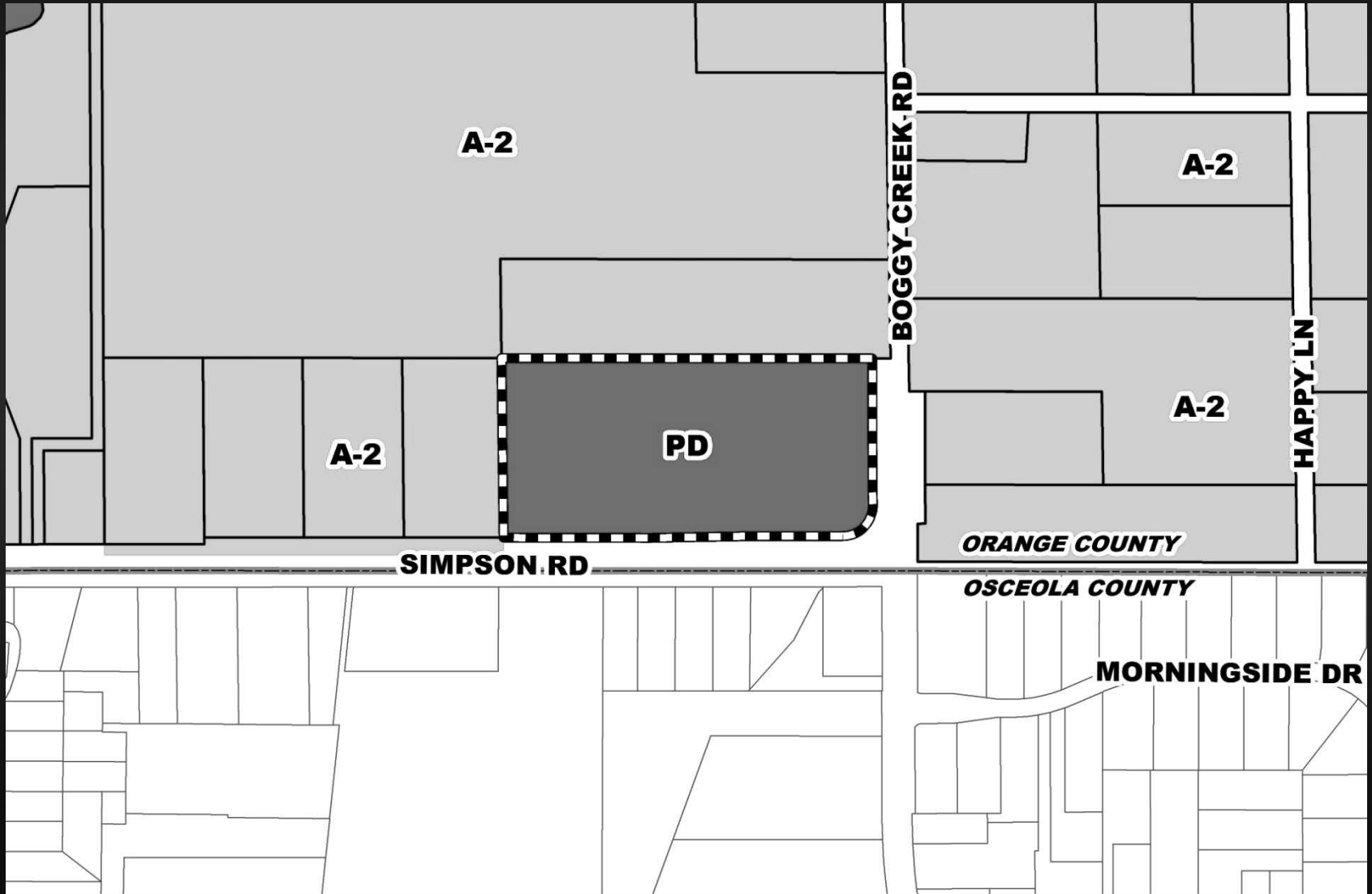


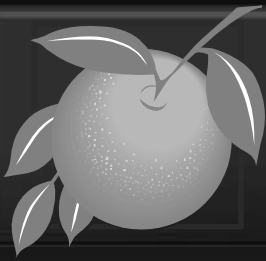
Boggy Creek Crossings PD / Boggy Creek Crossings Preliminary Subdivision Plan (PSP) Future Land Use Map





Boggy Creek Crossings PD / Boggy Creek Crossings Preliminary Subdivision Plan (PSP) Zoning Map





Boggy Creek Crossings PD / Boggy Creek Crossings Preliminary Subdivision Plan (PSP) Aerial Map



SIMPSON RD

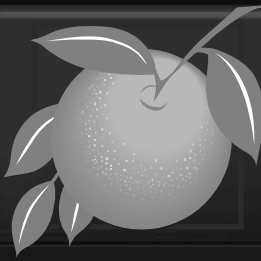
BOGGY CREEK RD

HAPPY LN

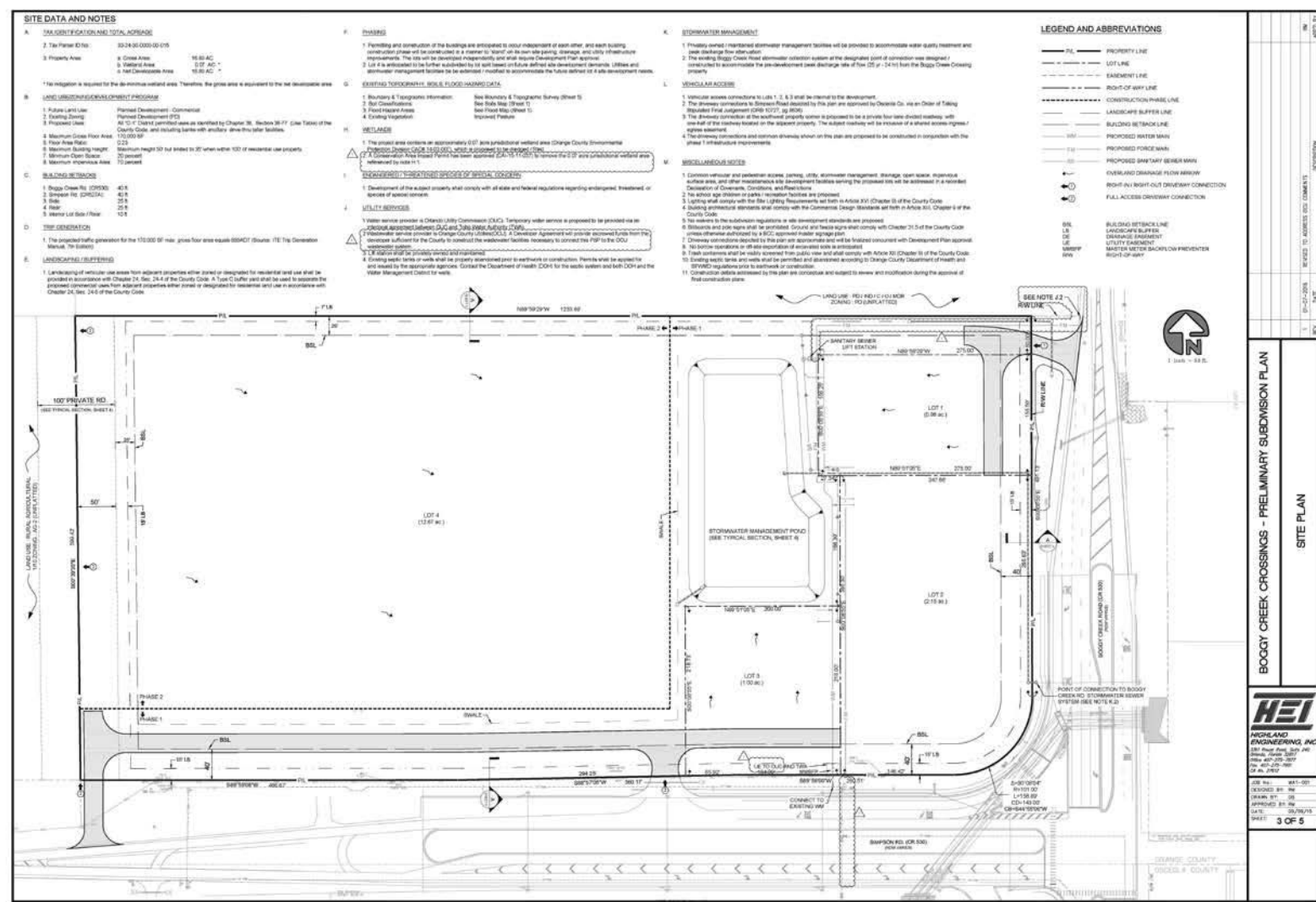
ORANGE COUNTY

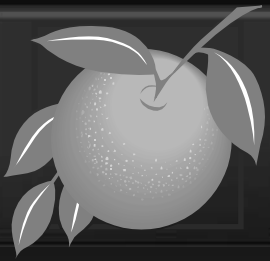
OSCEOLA COUNTY

MORNINGSIDE DR



Boggy Creek Crossings PD / Boggy Creek Crossings Preliminary Subdivision Plan (PSP)





Action Requested

Make a finding of consistency with the Comprehensive Plan (CP) and approve the Boggy Creek Crossings PD / Boggy Creek Crossings Preliminary Subdivision Plan (PSP) dated “Received January 11, 2016”, subject to the conditions listed under the DRC Recommendation in the Staff Report.

District 4