



***Board of County Commissioners***

# **Public Hearing**

October 16, 2012



# **Frye Center PD/Lakeside Village Townhomes PSP**

**Case: PSP-12-05-097**

**Project: Frye Center PD/Lakeside Village  
Townhomes Preliminary Subdivision  
Plan**

**District: 1**

**Proposed 32 Townhome units:**

**Use:**

- Min. Living area: 500 sq. ft.
- Max. building height: 40' (3-stories)



# Frye Center PD/Lakeside Village Townhomes PSP

## Location



SCALE: N.T.S.

CIVIL/SITE  
ENGINEERING, INC.  
375 GALEYS AVE. SUITE 100  
ALBUQUERQUE, NM 87101  
TEL: 407.844.8942  
FAX: 407.844.8942  
WWW.CSEI-FL.COM



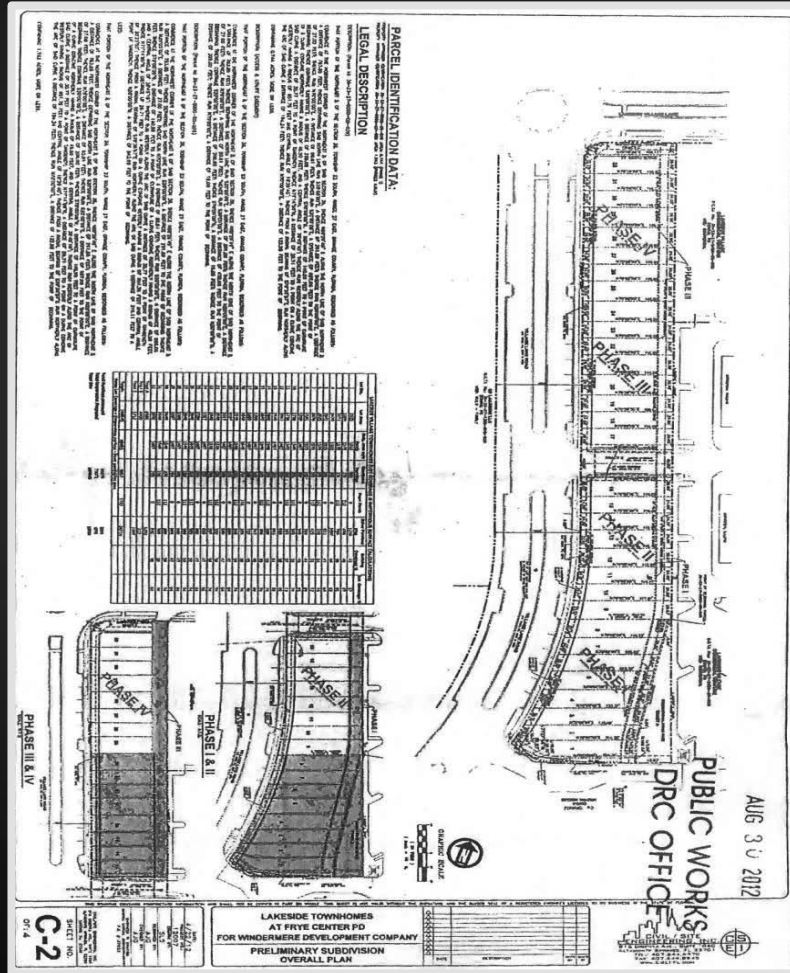
**LAKESIDE VILLAGE  
TOWNHOMES  
LOCATION MAP**

**EXHIBIT A**

PROJ. NO. 12007  
09/10/12



# Preliminary Subdivision Plan





# **Frye Center PD/Lakeside Village Townhomes PSP**

## **Action Requested**

- **Approve the Frye Center Planned Development - Lakeside Village Townhomes Preliminary Subdivision Plan dated “Received August 30, 2012,” subject to eleven (11) conditions in the staff report.**