



***Board of County Commissioners***

# **Public Hearing**

October 30, 2012



# **Northeast Resort Parcel (aka NERP PD) PD/Phase 2 PSP**

**Case: PSP-12-06-117**

**Project: Northeast Resort Parcel (aka NERP PD)  
Planned Development/Phase 2  
Preliminary Subdivision Plan**

**District: 1**

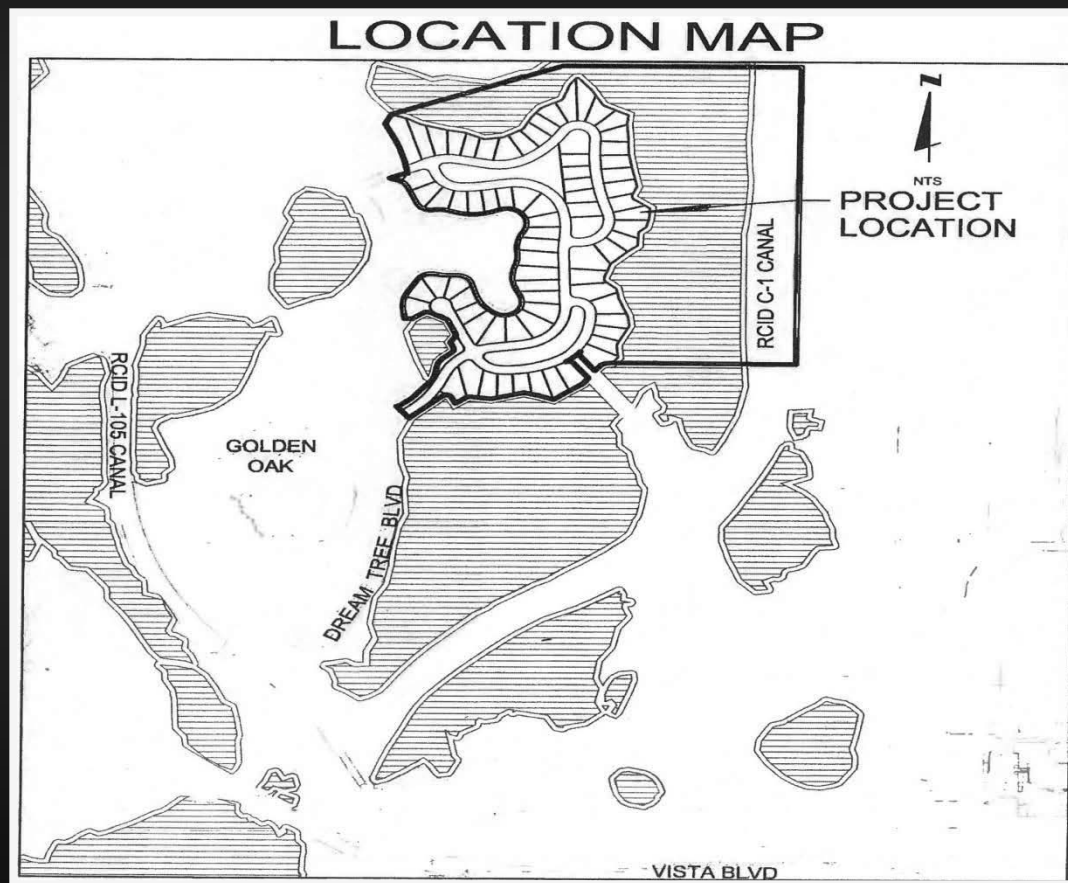
**Proposed 75 Single-family dwelling units:**

- Use:**
- Min. living area: 1,200 sq. ft.
  - Min. lot width: 40'
  - Max. building height: 50' (3-stories)



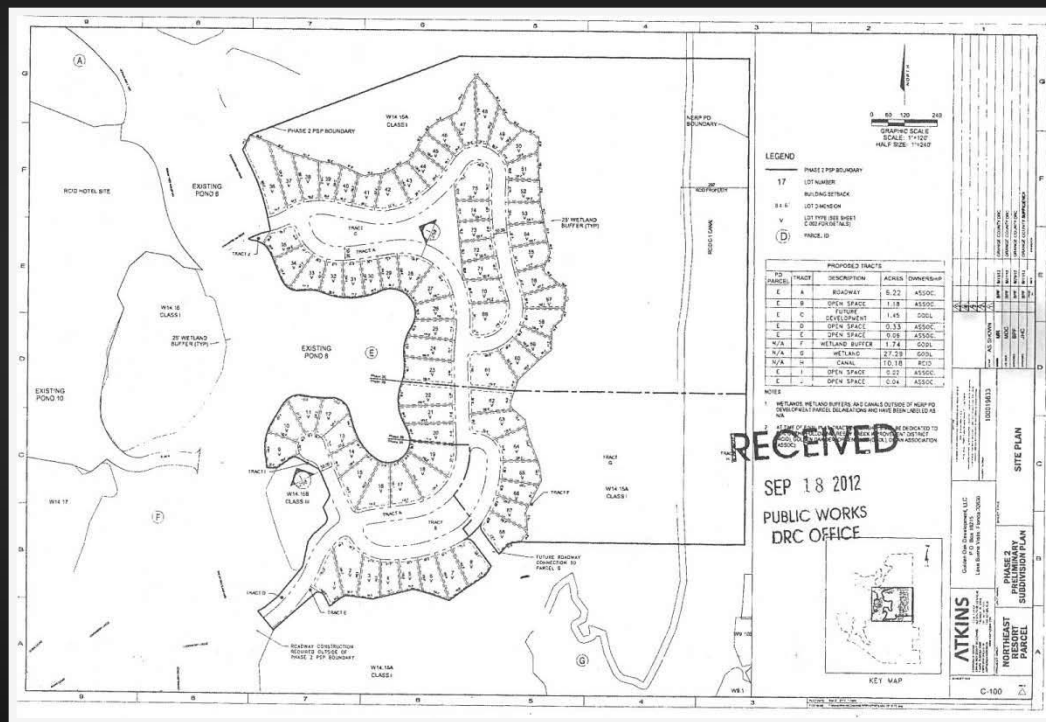
# Northeast Resort Parcel (aka NERP PD) PD/Phase 2 PSP

## Location





# Preliminary Subdivision Plan





## **Northeast Resort Parcel (aka NERP PD) PD/Phase 2 PSP**

# **Action Requested**

- **Approve the Northeast Resort Parcel (aka NERP PD) Planned Development/Phase 2 Preliminary Subdivision Plan dated “Received September 18, 2012,” subject to nine (9) conditions in the staff report.**