

# **Tree Replacement Trust Fund**

**Cooperative Extension Service Division**

**Board of County Commissioners**

**November 27, 2012**



# Tree Replacement Trust Fund

## Presentation Outline

- Background
- Proposed Allocation
- Proposed Restoration Projects
- Proposed Grant Programs
- Requested Action





# Tree Replacement Trust Fund

## Presentation Outline

- **Background**
- **Proposed Allocation**
- **Proposed Restoration Projects**
- **Proposed Grant Programs**
- **Requested Action**





# Tree Replacement Trust Fund

## Background

- **Agricultural Advisory Board recommendation for tree planting on public property**
- **BCC directed staff to identify potential projects**







# Tree Replacement Trust Fund

## Background

- Fund authorized in Section 15.283 (e)-(g) County Code
- Fund disbursement must be approved by BCC
- Fund used to
  - Replace tree canopy on public property
  - Community enhancement
  - Landscape materials and equipment
  - Educational programs





# Tree Replacement Trust Fund

## Presentation Outline

- Background
- **Proposed Allocation**
- Proposed Restoration Projects
- Proposed Grant Programs
- Requested Action





# Tree Replacement Trust Fund

## Proposed Allocation

- **\$1.4 M current total budget**
  - **\$500K for Adopt-a-Tree Program**
  - **\$200K for 17 restoration projects**
  - **\$700K for grants programs and marketing**





# Tree Replacement Trust Fund

## Presentation Outline

- Background
- Proposed Allocation
- **Proposed Restoration Projects**
- Proposed Grant Programs
- Requested Action





# Tree Replacement Trust Fund

## Proposed Restoration Projects

- **Selection Criteria**
  - Plant trees in groupings on large areas of county property
  - Enhancement of wildlife habitat
  - Increase scenic value of properties





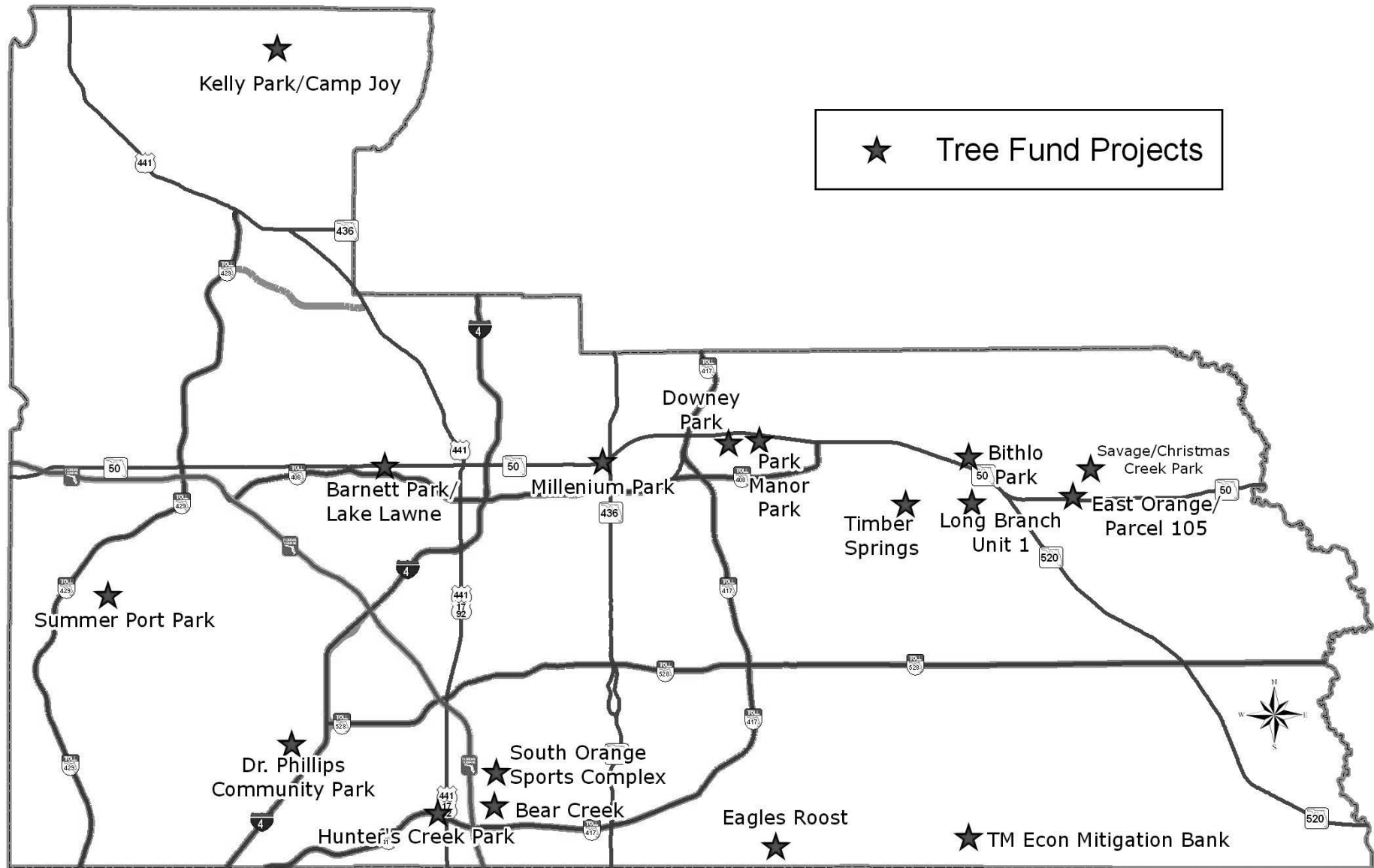
# Tree Replacement Trust Fund

## Proposed Restoration Projects

- 17 projects for \$200K
  - Includes site prep, tree purchase, installation and up to 3 years maintenance
  - 13 Park sites
  - 4 GreenPLACE properties

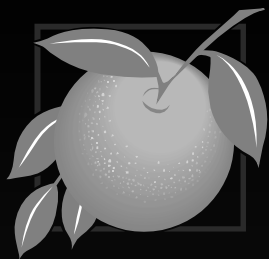


# Proposed Tree Fund Projects



Project Name	Tree Quantities	Total Cost ( Estimate)
Hunter's Creek Park	90	\$18,000.00
Dr. Phillips Park	280	\$4,990.00
Summerport Park	30	\$6,000.00
Kelly Park /Camp Joy Addition	32	\$2,300.00
Park Manor Park	25	\$5,000.00
Downey Park	100	\$3,000.00
Millennium Park /Enterprise Addition	113	\$7,600.00
Eagles Roost Preserve / Back to Nature	34,400	\$37,880.00
TM/ Econ Mitigation Site (Ph. 1 & 2)	23,400	\$44,565.00
Bear Creek Park	200	\$6,000.00
South Orange Sports Complex	175	\$5,250.00
Timber Springs Park	75	\$15,000.00
Long Branch Preserve	860	\$2,550.00
Bithlo Park	160	\$4,800.00
Savage/Christmas Creek Preserve	2,280	\$8,265.00
East Orange Park ( aka Parcel 105 )	200	\$6,000.00
Barnett Park/Lk Lawne	220	\$22,800.00
<b>Total</b>	<b>62,640</b>	<b>\$200,000.00</b>





# Tree Replacement Trust Fund

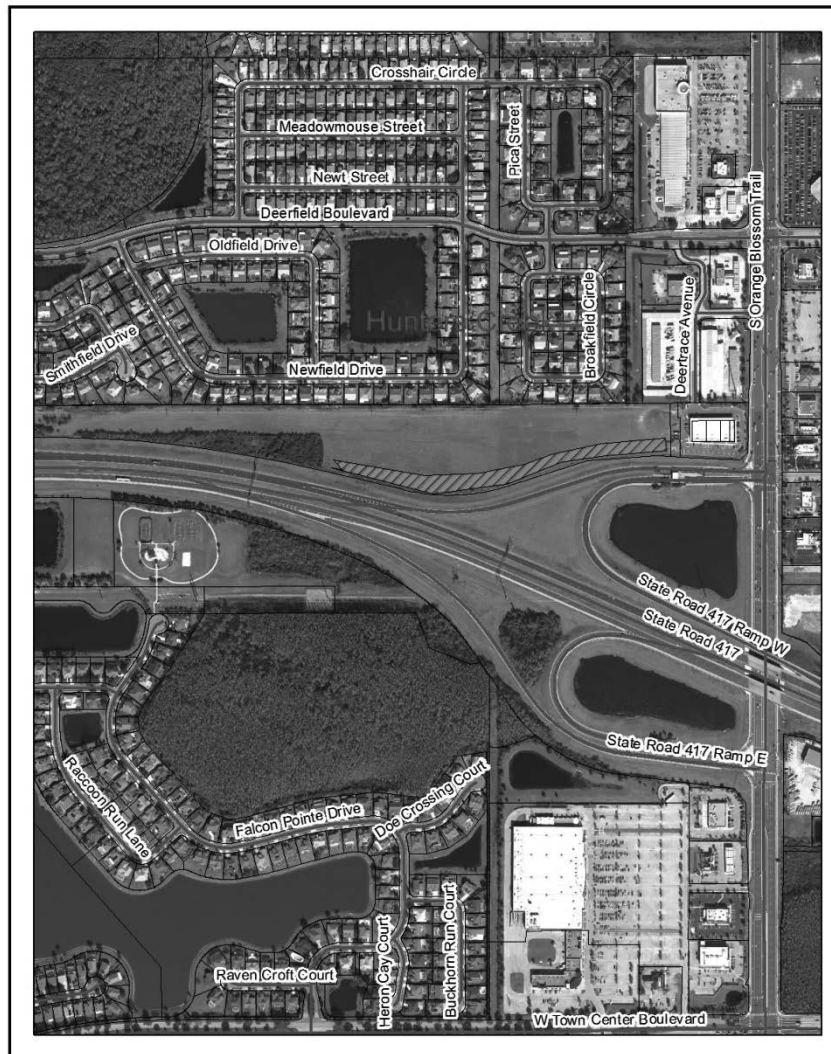
## Proposed Restoration Projects

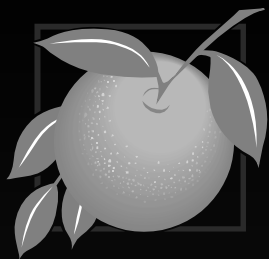
### Hunters Creek

Planting 90 Live Oak and Bald Cypress as a screen and buffer from the SR417

Managed by Parks and Recreation

Hunters Creek Park





# Tree Replacement Trust Fund

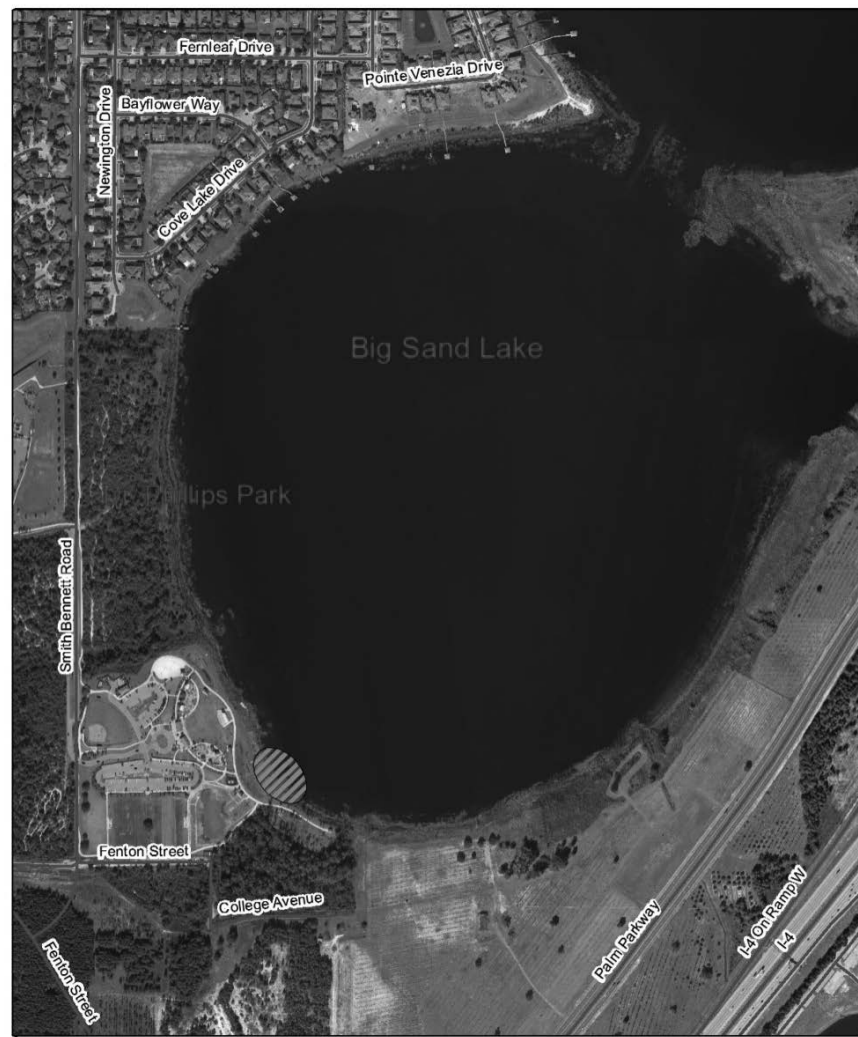
## Proposed Restoration Projects

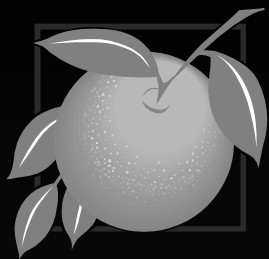
### Dr. Phillips Park

Remove invasive  
species and replant  
with 280 Bald  
Cypress

Managed by EPD

Dr. Phillips Park





# Tree Replacement Trust Fund

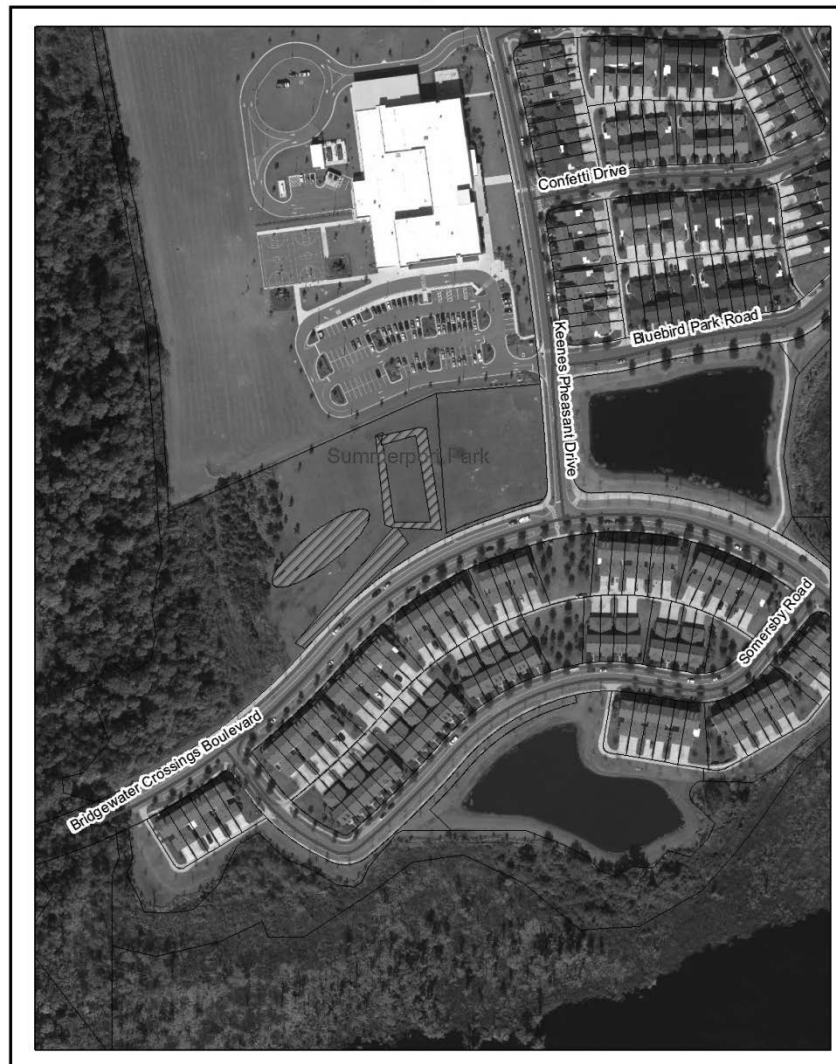
## Proposed Restoration Projects

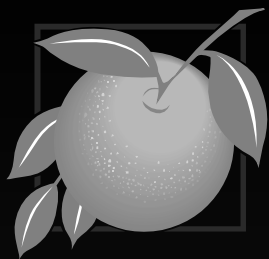
### Summerport Park

Planting 30 Live Oaks to provide shade for the park

Managed by Parks and Recreation

Summerport Park





# Tree Replacement Trust Fund

## Proposed Restoration Projects

### Camp Joy

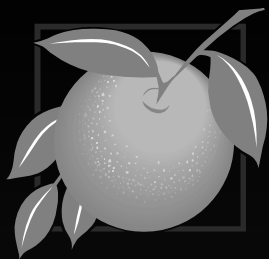
Restoration and replanting of  
32 Live Oaks and Bald Cypress

Meet FCT grant requirements

Managed by Parks and  
Recreation

Kelly Park/ Camp Joy Addition





# Tree Replacement Trust Fund

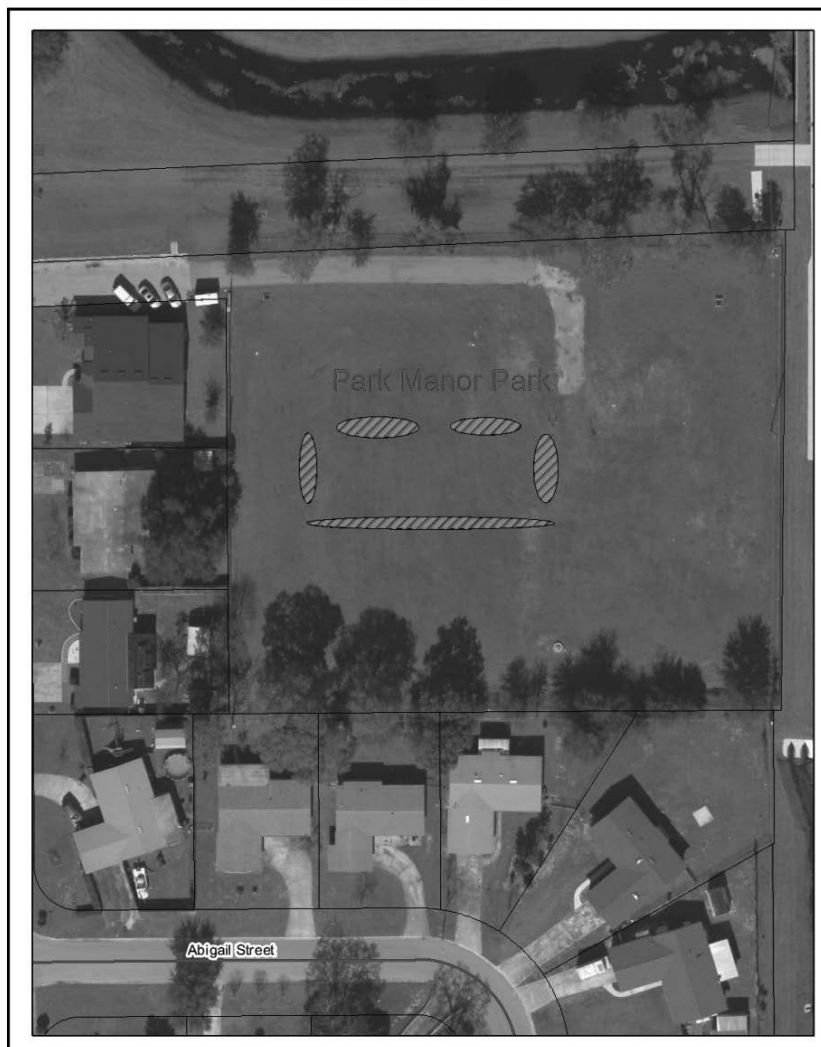
## Proposed Restoration Projects

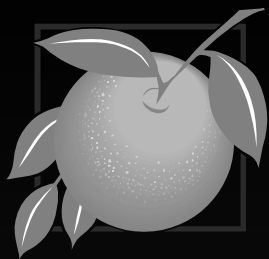
### Park Manor Park

Planting 25 Live Oaks to provide shade for the park

Managed by Parks and Recreation

Park Manor Park





# Tree Replacement Trust Fund

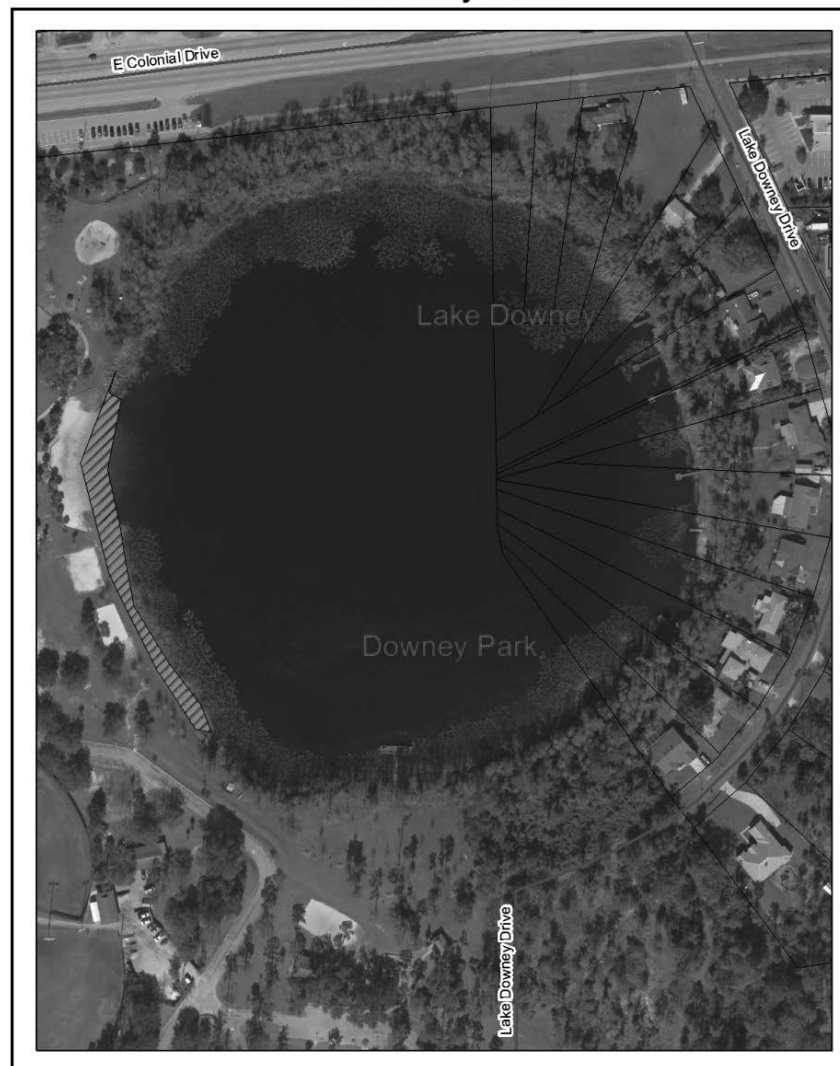
## Proposed Restoration Projects

### Downey Park

Planting 100 Bald Cypress for shade and shoreline protection

Managed by Parks and Recreation

Downey Park





# Tree Replacement Trust Fund

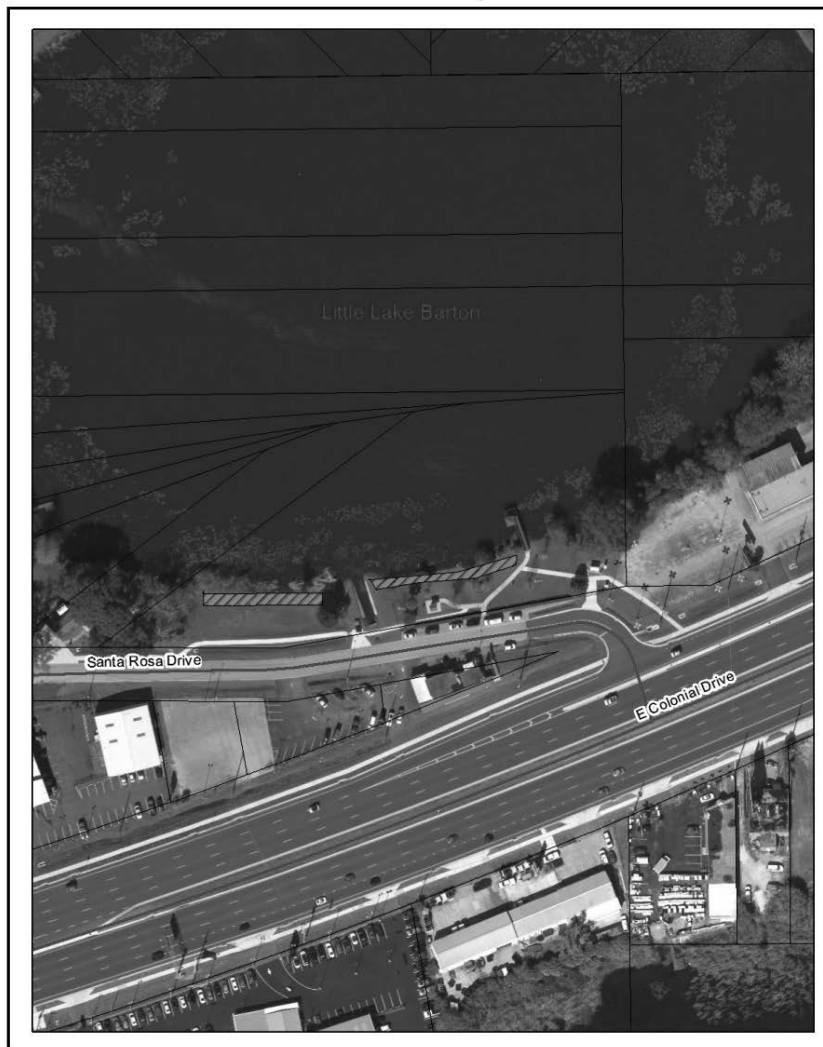
## Proposed Restoration Projects

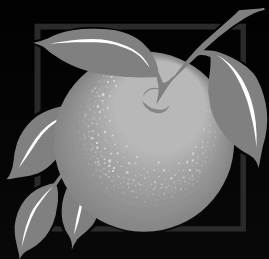
### Millennium Park

Planting 13 Live Oaks and 100 Bald Cypress for shade and shoreline protection

Managed by Parks and Recreation

Millennium Park/ Enterprise Addition





# Tree Replacement Trust Fund

## Proposed Restoration Projects

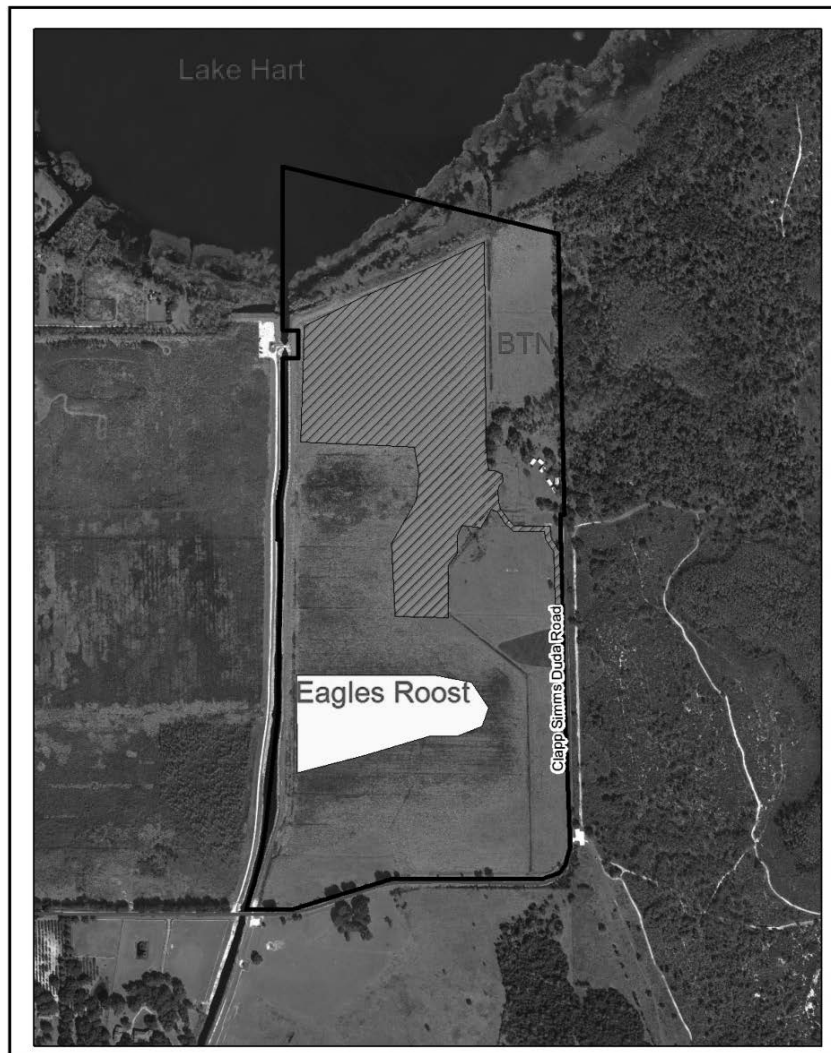
### Eagles Roost/ Back to Nature

Plant buffer in order to meet permit requirements

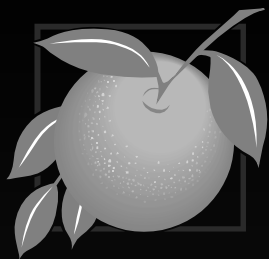
34,400 Magnolia, Live Oak, Longleaf and Slash Pine seedlings

Managed by EPD

Eagles Roost Preserve/ Back to Nature







# Tree Replacement Trust Fund

## Proposed Restoration Projects

### TM/Econ Mitigation

Phase I : 85 acres with 8500 Longleaf Pine seedlings

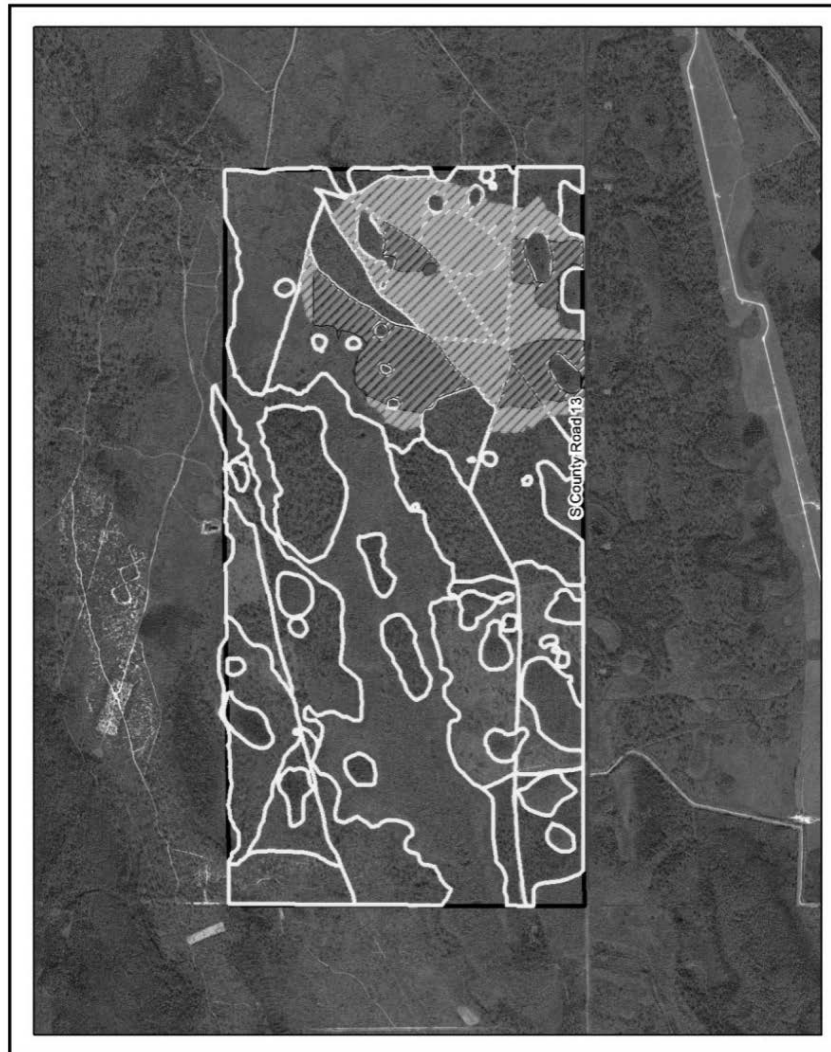
Phase II: 149 acres with 14,900 Longleaf Pine seedlings

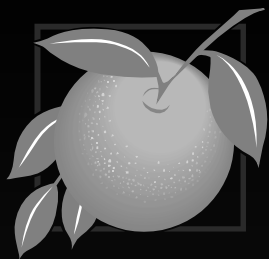
Restore phases impacted by 2010 wildfires

Habitat enhancement for Red Cockaded Woodpecker

Managed by EPD

Tm/Econ Mitigation Site ( Phases 1 & 2 )





# Tree Replacement Trust Fund

## Proposed Restoration Projects

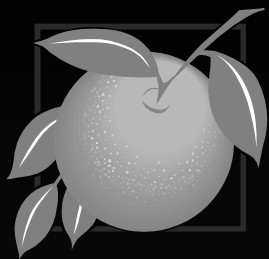
### Bear Creek Park

Plant 200 Slash Pine, Live Oak and Bald Cypress on shoreline and around multipurpose fields

Managed by Parks and Recreation

Bear Creek Park





# Tree Replacement Trust Fund

## Proposed Restoration Projects

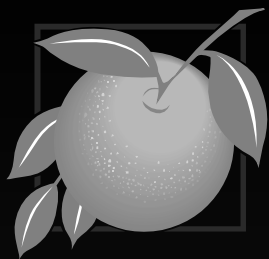
### South Orange Sports Complex

Replant 175 Slash Pine in open areas to enhance the park

Managed by Parks and Recreation

South Orange Sports Complex





# Tree Replacement Trust Fund

## Proposed Restoration Projects

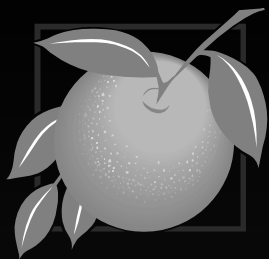
### Timber Springs Park

Planting 75 Slash Pine and Live Oak for shade and buffering

Managed by Parks and Recreation

Timber Springs Park





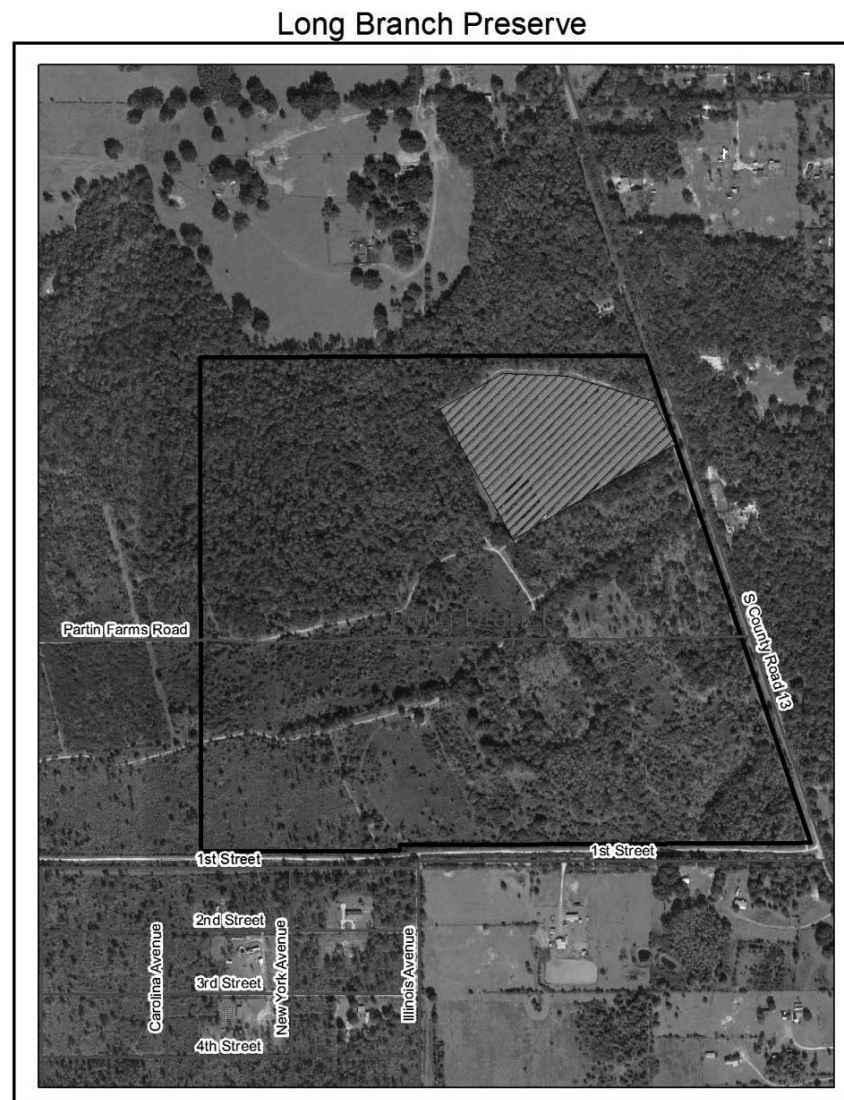
# Tree Replacement Trust Fund

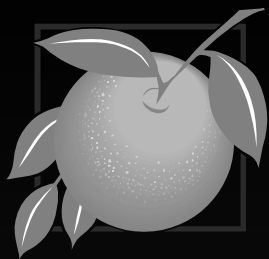
## Proposed Restoration Projects

### Long Branch Preserve

Restore 17.2 acres with 860  
Longleaf Pine seedlings

Managed by EPD





# Tree Replacement Trust Fund

## Proposed Restoration Projects

### Bithlo Park

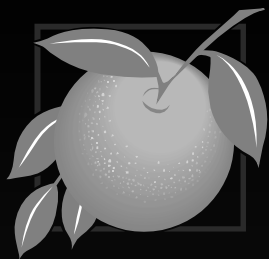
Planting 160 Slash Pine, Live Oak and Bald Cypress for shoreline restoration and reforestation

Managed by Parks and Recreation

Bithlo Park







# Tree Replacement Trust Fund

## Proposed Restoration Projects

### Savage/Christmas Creek Preserve

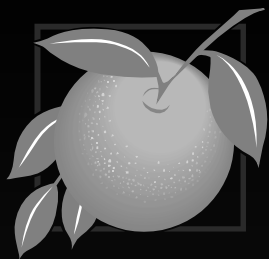
Phase 2 of a 57 acre habitat enhancement

Planting 2,280 Longleaf Pine seedlings

Managed by EPD

Savage/Christmas Creek Preserve





# Tree Replacement Trust Fund

## Proposed Restoration Projects

### East Orange Park (aka Parcel 105)

Planting 200 Slash Pine, Live Oak and Bald Cypress

Meet FCT Grant requirement

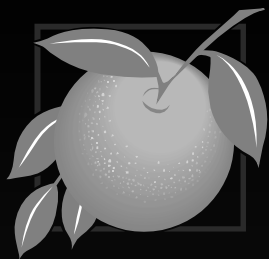
Reforestation of old pasture, lake shoreline and sport field perimeter

Managed by Parks and Recreation

East Orange Park ( aka Parcel 105)







# Tree Replacement Trust Fund

## Proposed Restoration Projects

### Barnett Park / Lk. Lawne

Replant 220 Live Oak, Slash Pine and Bald Cypress around stormwater pond and in various other areas in park

Managed by EPD

Barnett Park/ Lk. Lawne Stormwater Solar Reuse Pond





# Tree Replacement Trust Fund

## Presentation Outline

- Background
- Proposed Allocation
- Proposed Restoration Projects
- **Proposed Grant Programs**
  - Residential Tree Program
  - Roadway Median Tree Program
- Requested Action





# Tree Replacement Trust Fund

## Proposed Grant Program

## Residential Tree Program





# Tree Replacement Trust Fund

## Residential Tree Program

- Available to neighborhood organizations
- Planting in common areas or front yards (not in ROW)
- Requires petition of 51% of owners
- Max award \$5K
- Grant pays 75%
- Neighborhood cash match 25%
- Volunteer labor required





# Tree Replacement Trust Fund

## Residential Tree Program

- Must have a project team
- Selection of trees must be pre-approved
- Identify water source
- Must request locates for each planting
- Must sign a maintenance agreement
- Submit routine reports





# Tree Replacement Trust Fund

## Proposed Grant Program

## Roadway Median Tree Program





# Tree Replacement Trust Fund

## Roadway Median Tree Program

- Available to businesses, civic groups and HOAs
- County roads only, not on 10 year CIP
- Must be ½ mile or less
- Max grant award \$15K
- Grant pays 50% of total cost
- Max total project cost \$30K





# Tree Replacement Trust Fund

## Roadway Median Tree Program

- Must have a project team
- Must secure quotes, manage contractor, and management plan
- Must use an approved design plan
- Must sign maintenance agreement
- Requires ROW Utilization Permit, ROW Use Agreement and MOT
- Must submit routine reports







# Tree Replacement Trust Fund

## Roadway Median Tree Program

- Each contract must have a minimum 3year management plan:
  - water, mulching, fertilizer, trimming, protection, replacement or removal
- If entity defaults on management:
  - Will not be eligible to apply again
  - County may elect to remove the trees
- County will maintain current mowing schedule





# Tree Replacement Trust Fund

## Staff Recommendations

- **\$1.4 M current total budget**
  - **\$500K for Adopt-a-Tree Program**
  - **\$200K for restoration projects**
    - **17 identified projects**
    - **Others that meet criteria to be determined based on funding availability**
    - **Costs to include site prep, labor and maintenance**
  - **\$700K for grants programs and marketing**



# Tree Replacement Trust Fund

## Presentation Outline

- Background
- Proposed Allocation
- Proposed Restoration Projects
- Proposed Grant Programs
  - Residential Tree Program
  - Roadway Median Tree Program
- Requested Action



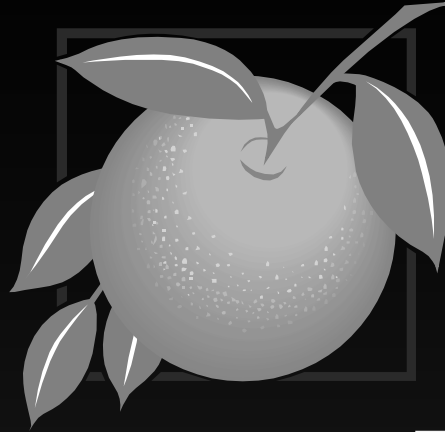


# Tree Replacement Trust Fund

## Requested Action

**Board direction on staff's recommendations on the use of revenue from the County's Tree Replacement Trust Fund to enhance tree plantings in the County.**





# **Tree Replacement Trust Fund**

**Cooperative Extension Service Division**

**Board of County Commissioners**

**November 27, 2012**