

International Drive Proposed Pedestrian Bridges



**Board of County Commissioners
December 11, 2012**



PRESENTATION OUTLINE

- **Background**
- **Current Projects**
- **Transit Lanes**
- **Rosen Plaza Bridge**
- **Next Steps**



PRESENTATION OUTLINE

- **Background**
- Current Projects
- Transit Lanes
- Rosen Plaza Bridge
- Next Steps



BACKGROUND

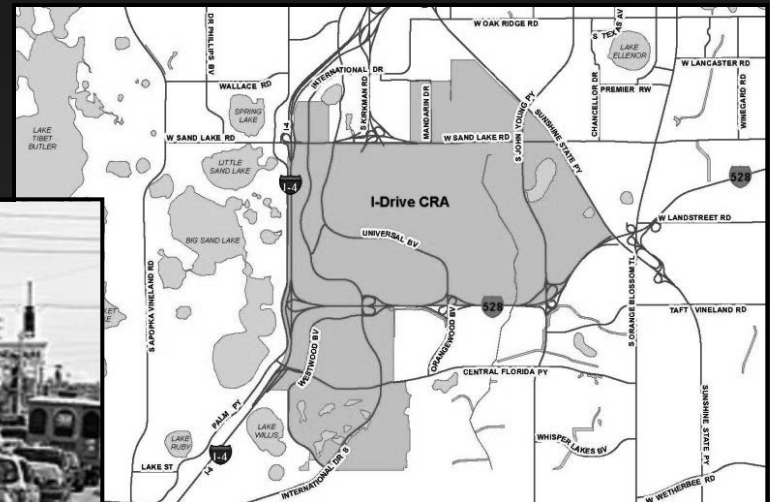
I-Drive Area

- 2nd largest Convention Center
- 1 million Convention Attendees
- 6 Major Theme Parks
- 30,000 Hotel Rooms
- Other development





- Created in 1998
- Transportation Focus





BACKGROUND

- **Convention Center Investment**
- **Infrastructure Improvements**
- **Economic Development**





BACKGROUND

Stakeholders

- **I-Drive CRA Advisory Committee**
- **ETC of Central Florida, Inc**
- **I-Drive Chamber of Commerce**
- **I-Drive Master Transit and Improvement District**
- **Plaza International**
- **OCCC Client Advisory Board**
- **Property Owners**





BACKGROUND

Transportation Themes

- Roadway Capacity
- Intelligent Transportation Systems
- Transit
- Pedestrian Mobility





PRESENTATION OUTLINE

- Background
- **Current Projects**
- Transit Lanes
- Rosen Plaza Bridge
- Next Steps



The map illustrates the I-Drive CRA area, showing the intersection of I-4 and I-28. Key roads include International Dr, Westwood Blvd, Universal Blvd, W Sand Lake Rd, and Wetherbee Rd. Several lakes are labeled, including Lake Tiber Butler, Lake Sheen, Lake Nelly, and Lake Ruby. An inset map in the bottom right corner shows a cross-section of a road with a 112' width, including lanes for driving, turning, and parking, and a central median.





The map displays the I-Drive CRA area in Orlando, Florida, highlighted in gray. Major roads include I-4, I-275, SR 528, and SR 535. Key streets shown are W Sand Lake Rd, Universal Blvd, Westwood Blvd, Orange Wood Blvd, Central Florida Pkwy, and W Landstreet Rd. Several lakes are labeled, including Lake Tippet Outlet, Lake Sheen, Pocket Lake, Lake Ruby, Lake Willis, Lake Ellenor, and Lake Ruidy. An inset photograph in the bottom right corner shows a modern building with a glass facade at night.





The map displays the I-Drive CRA (Central Business District) area in Orlando, Florida. Key features include:

- Roads:** Major thoroughfares shown are International Drive (US Highway 17), Sand Lake Road, Westwood Boulevard, Universal Boulevard, Orange Wood Boulevard, Central Florida Parkway, and Palm Parkway. Other streets include Wallace Road, W Oak Ridge Road, S Kirkman Road, Mandarin Drive, S John Young Avenue, Sunshine State Parkway, Chancellor Drive, Premier Road, W Lancaster Road, Winegar Road, W Lang Street Road, Taft Vineland Road, Whisper Lakes Boulevard, W Wetmore Road, Dr. Phillips Boulevard, S Apopka Vineland Road, and Lake Street.
- Lakes:** Several water bodies are depicted, including Lake Elenor, Spring Lake, Little Sand Lake, Big Sand Lake, Lake Sheen, Pocket Lake, Lake Ruby, Lake Wells, and Lake Tibet Butler.
- Highways:** Interstates 4 (I-4) and 528 are clearly marked.
- I-Drive CRA:** A large, centrally located area is shaded gray and labeled "I-Drive CRA".
- Inset Photo:** In the bottom right corner, there is a small photograph showing a close-up of a black metal pole supporting a white rectangular street sign with the word "INTERNATIONAL" visible.

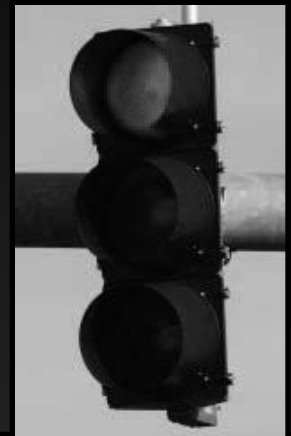




CURRENT PROJECTS

SCOOT Traffic Signal System

- Additional Locations
- New Infrastructure
- System Upgrades
- Design/Installation





CURRENT PROJECTS

I-Drive Transit Lanes

- Mobility Options
- Improved Traffic Flow
- Preliminary Engineering

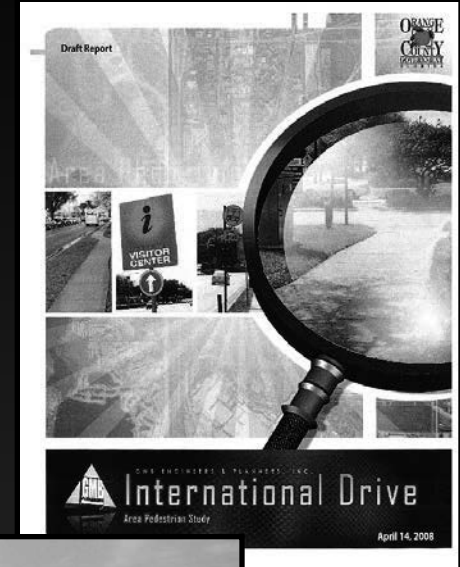




CURRENT PROJECTS

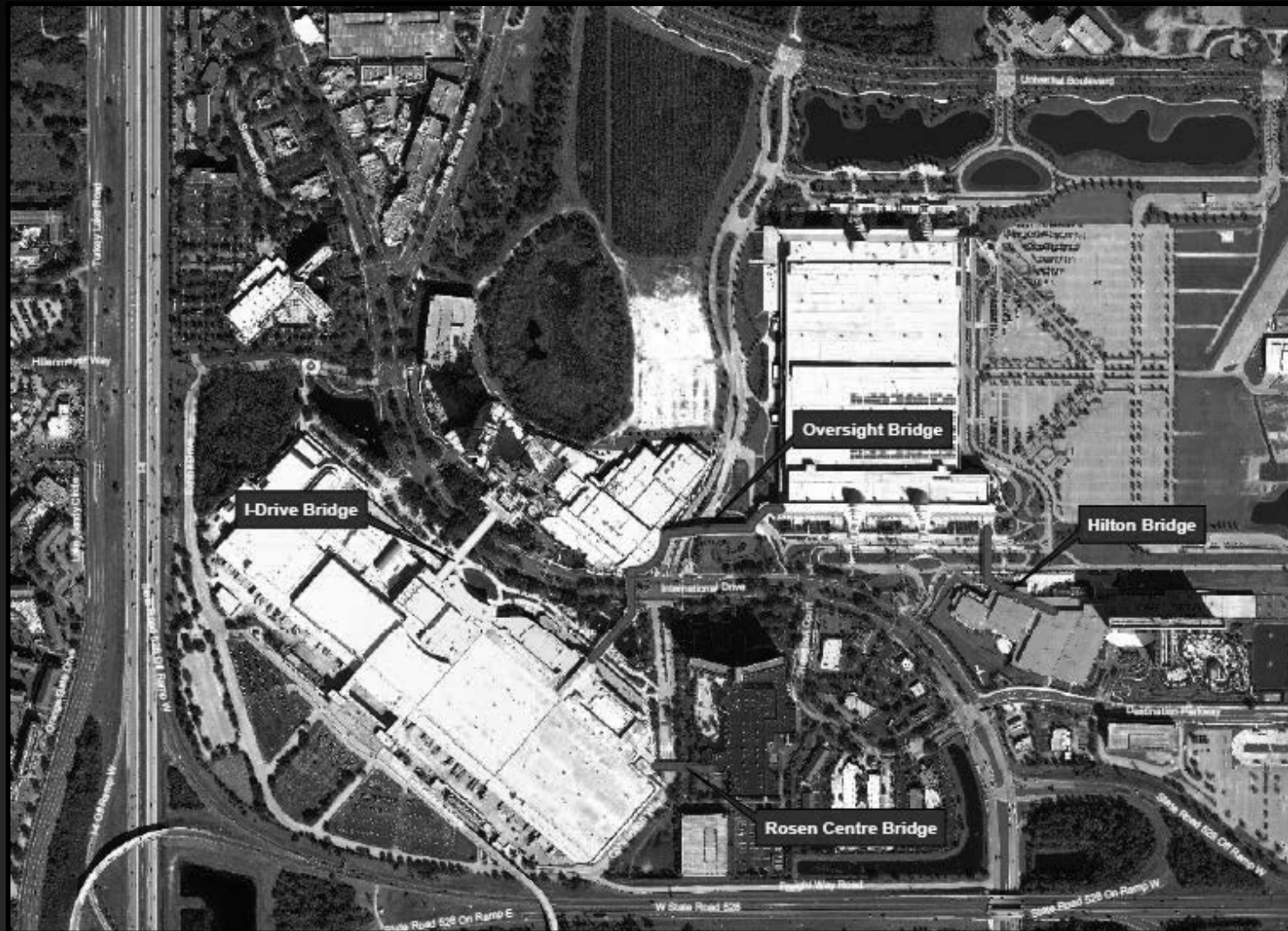
Pedestrian Enhancements

- Pedestrian Assessment
- Sidewalks
- Safety Improvements
- Pedestrian Bridges





CURRENT PROJECTS





CURRENT PROJECTS

I-Drive Pedestrian Bridge

- Elevated Pedestrian Crossing at OCCC West Building
- High Pedestrian Activity
- Final Design





PRESENTATION OUTLINE

- Background
- Current Projects
- **Transit Lanes**
- Rosen Plaza Bridge
- Next Steps

International Drive Transit Lanes

Destination Parkway to Sand Lake Road





Presentation Outline

- **Project Limits**
- **Project Need**
- **Preferred Alternative**
- **Schedule & Cost**



Presentation Outline

- **Project Limits**
- Project Need
- Preferred Alternative
- Schedule & Cost



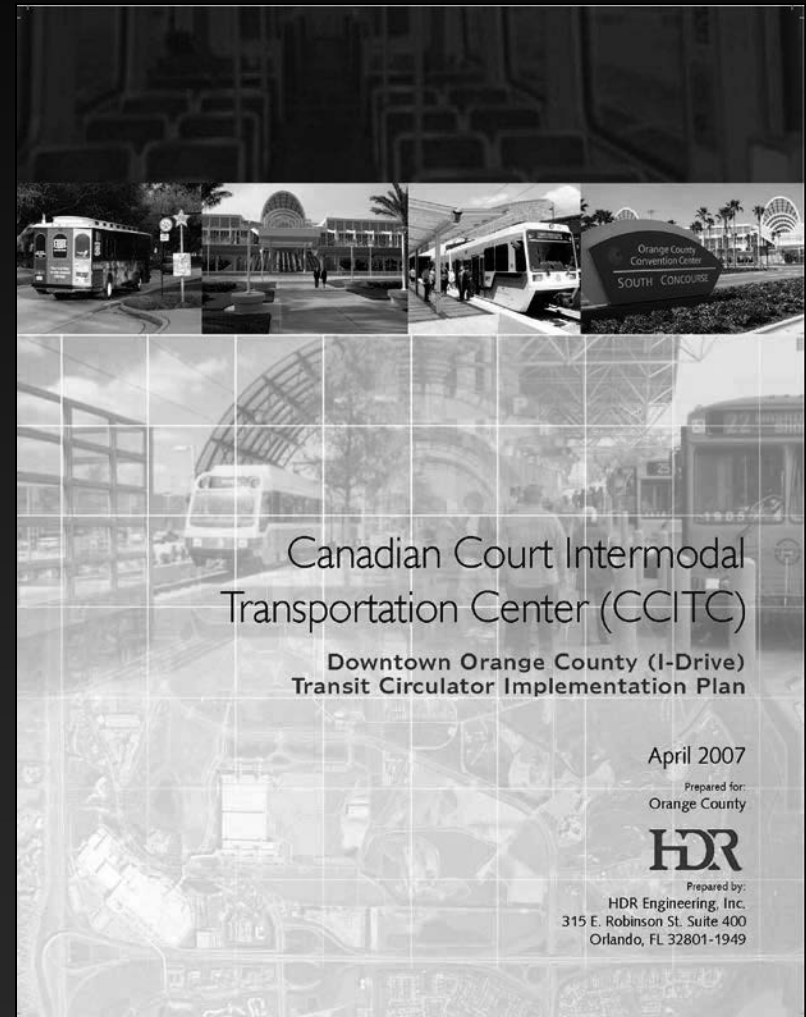
Project Limits





Project Limits

- **Convention Center Study 2007**
- **Alignment Concept**
- **Use Existing Right Turn Lanes**





Project Limits





Presentation Outline

- Project Limits
- **Project Need**
- Preferred Alternative
- Schedule & Cost



Project Need

Small Group Meetings

- ETC of Central Florida, Inc.
- I-Drive Chamber of Commerce
- I-Drive District
- Plaza International
- New Developments
- On-Site Meetings





Project Need

- I-Ride Trolley
- Lynx
- Private Charters
- Improved Bus Pull-outs





Presentation Outline

- Project Limits
- Project Need
- **Preferred Alternative**
- Schedule & Cost



Preferred Alternative

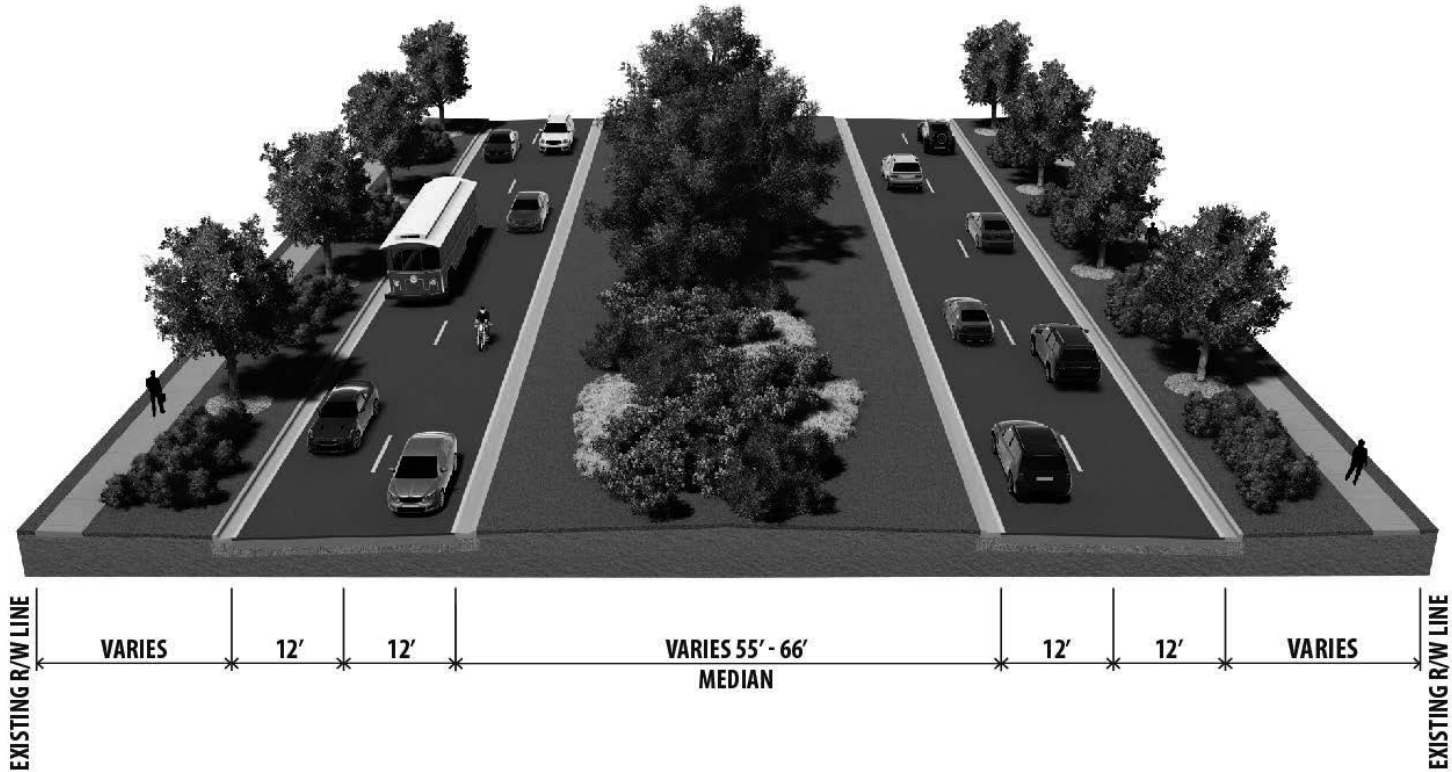
Project Objectives

- Right of Way Donations
- Maximize Use of Existing Drainage & Pavement
- Minimize Utility Impacts
- Minimize Landscaping Impacts
- Pedestrian Bridge Coordination





Preferred Alternative

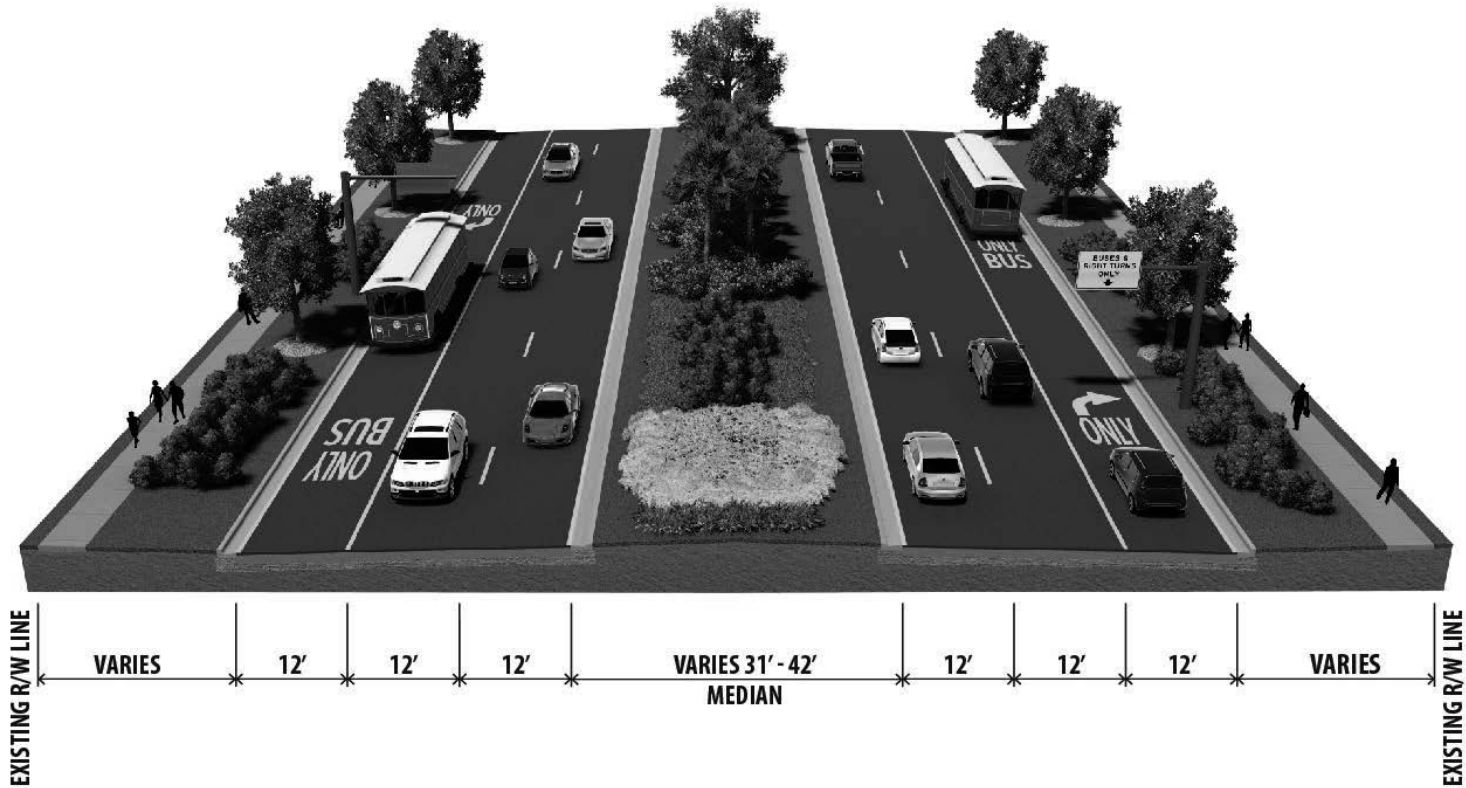


International Drive Transit Lanes

EXISTING TYPICAL SECTION



Preferred Alternative

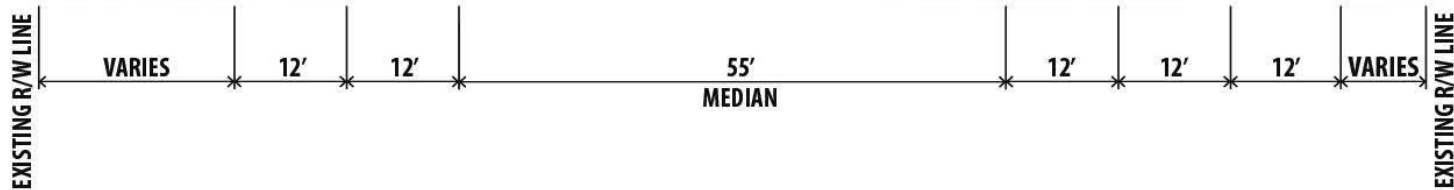


International Drive Transit Lanes

PROPOSED TYPICAL SECTION



Preferred Alternative

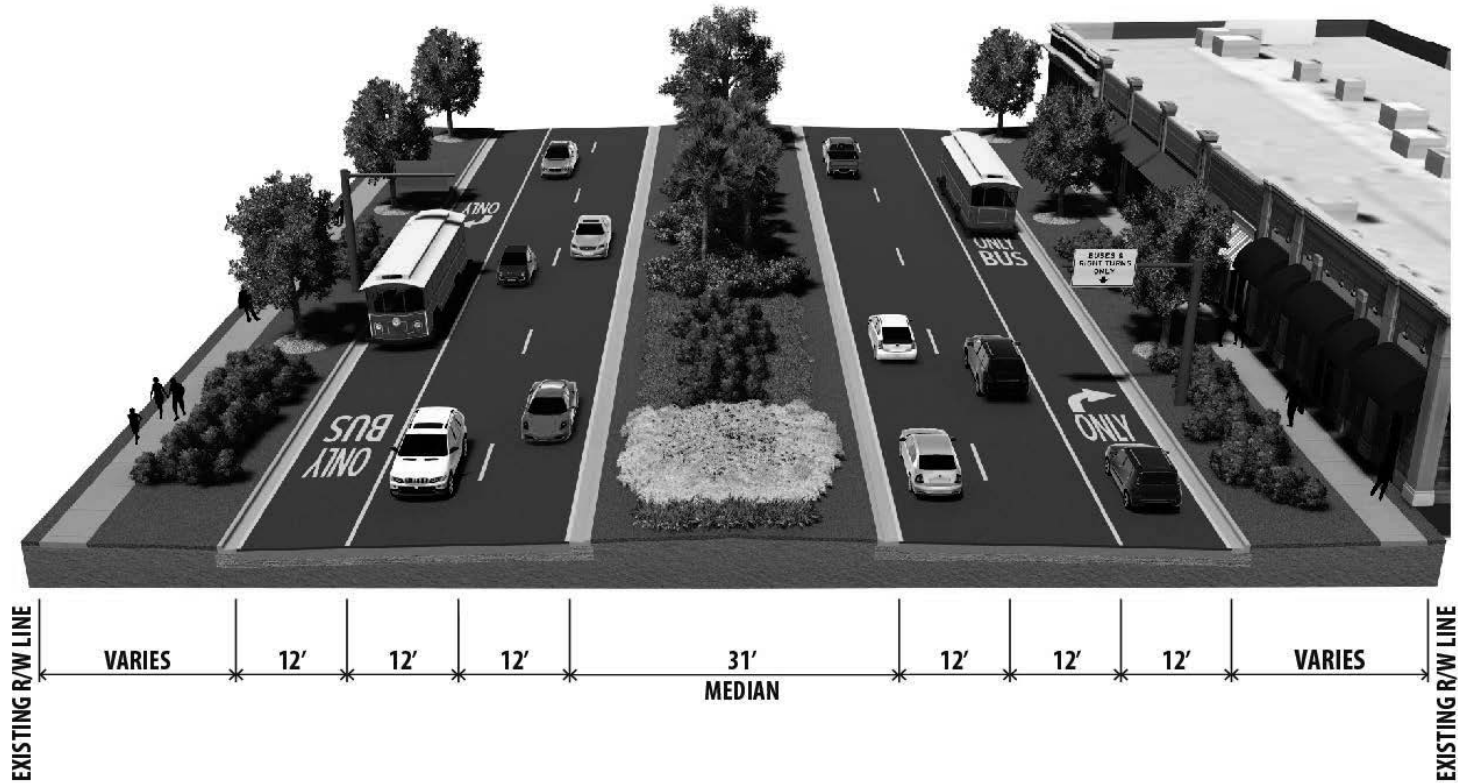


International Drive Transit Lanes

EXISTING TYPICAL SECTION
POINTE ORLANDO TO BAHAMA BREEZE



Preferred Alternative

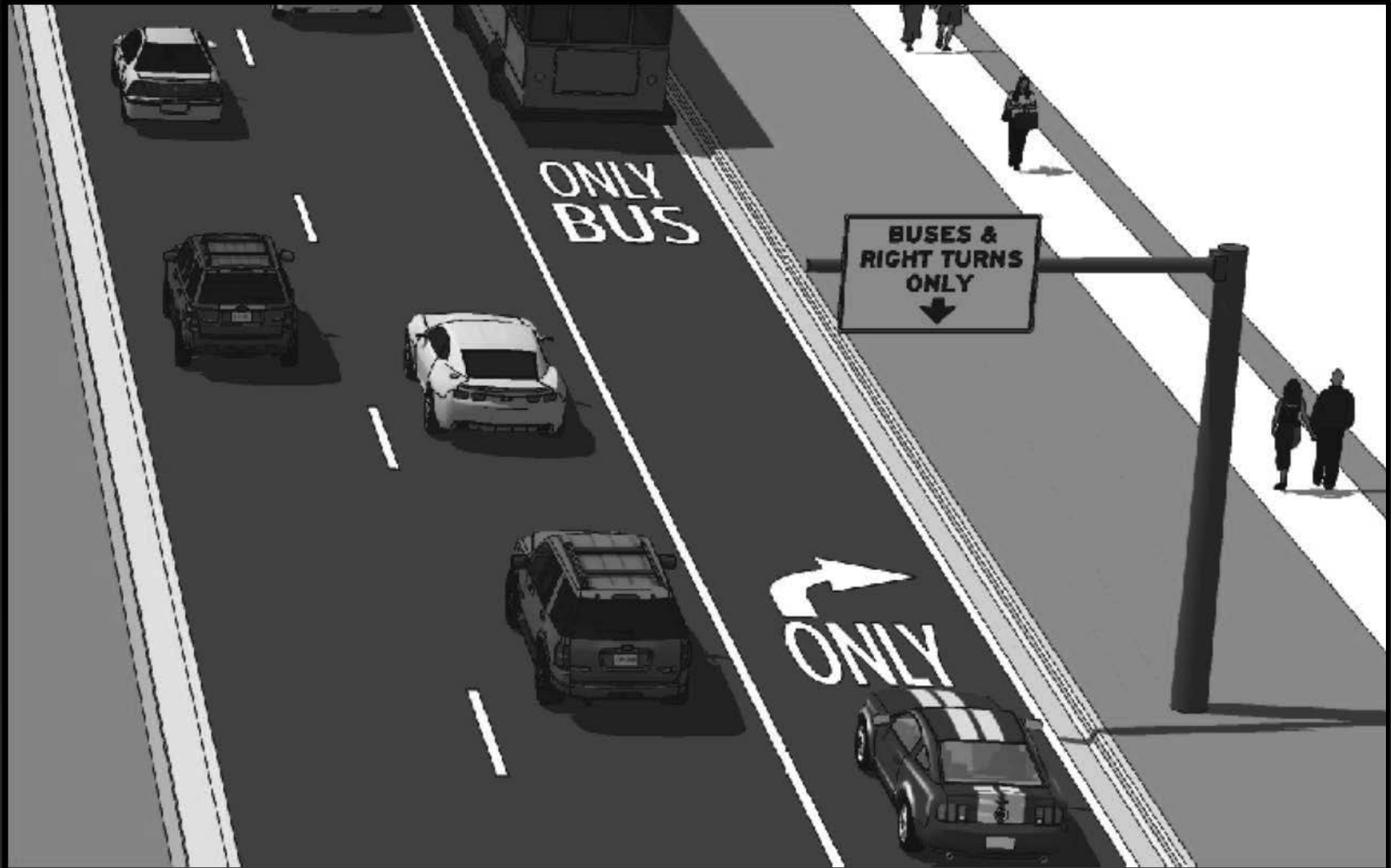


International Drive Transit Lanes

PROPOSED TYPICAL SECTION
POINTE ORLANDO TO BAHAMA BREEZE



Preferred Alternative

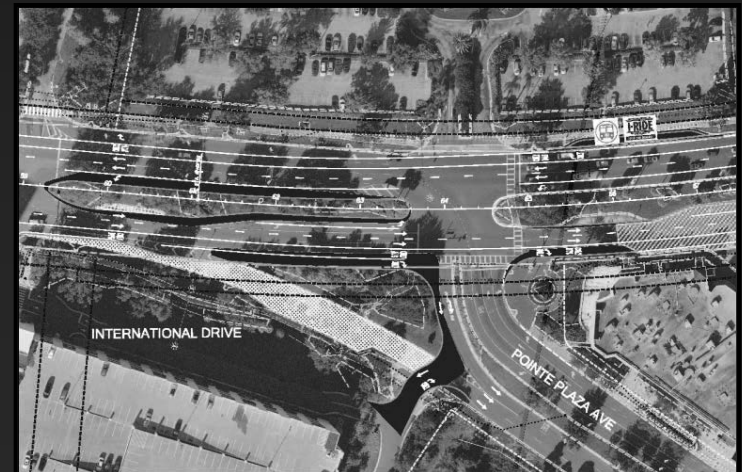




Preferred Alternative

Improved Safety

- Pedestrian Crosswalks
- U-Turn Revisions
- Intersection Improvements





Preferred Alternative

Impacts

- Landscaping
- Drainage
- Utilities
- Signs and Signals





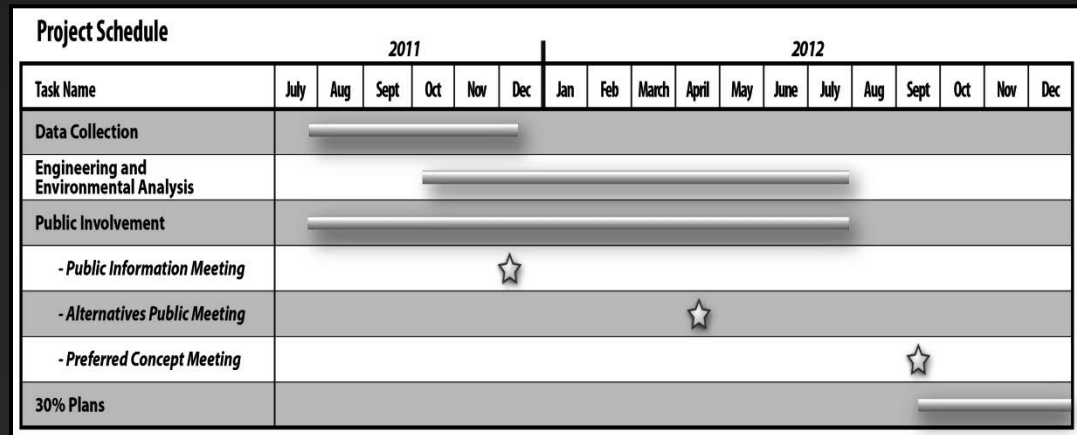
Presentation Outline

- Project Limits
- Project Need
- Preferred Alternative
- **Schedule & Cost**



Schedule and Cost

- Preliminary Engineering – Jan 2013
- Right-of-Way Coordination – 6 mos.
- Final Design and Permitting – 12 mos.
- Construction – 18 mos.
- Preliminary Estimate - \$9.9M





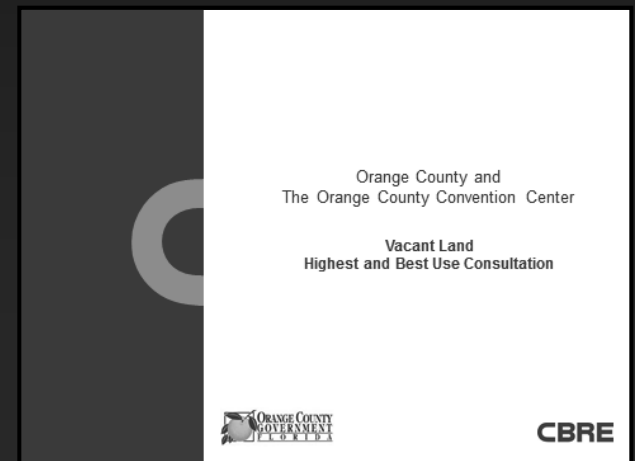
PRESENTATION OUTLINE

- Background
- Current Projects
- Transit Lanes
- **Rosen Plaza Bridge**
- Next Steps



Rosen Plaza Bridge

- **Rosen Proposal for Pedestrian Bridge**
 - OCCC West Concourse
 - Rosen Plaza Hotel
- **CBRE Highest and Best Use Land Study**





Original Proposal





Rosen Plaza Bridge

CBRE Study Findings

- Bridges add value to OCCC and client experience
- Pedestrian Bridge Master Plan is necessary
- Rosen Plaza proposed bridge would impact value of OCCC site
- Based on survey of OCCC clients, a different bridge location would better serve their needs

CBRE



Rosen Plaza Bridge

October 30, 2012 BCC Direction

- **Meet with Rosen Hotels**
- **Plan pedestrian bridge that would eventually connect to Pointe Orlando**
 - **CBRE guidelines**
 - **Develop Deal Points and MOU**





Rosen Plaza Bridge

Meetings Held

- Rosen Hotels (4 meetings)
- Other Stakeholders
 - The Peabody Orlando
 - Pointe Orlando
 - I-Drive District
 - Plaza International
 - Universal Blvd POA





Agreement on Alignment





Agreement on Alignment

December 5th Meeting

- **Rosen designs, funds, and builds**
 - County approvals required
 - County only pays for upgrades
- **Maintenance – each party maintains bridge sections on its property**
- **Advertising – each party is limited to advertising on its property**



Additional Proposals

- **Phone Call received Dec. 6th @ 12pm**
 - **New connection point at front of Rosen Plaza**
- **Meeting held Dec. 7th @ 9am**
 - **3 more alignments**
- **E-mail received Dec. 7th @ 4pm**
 - **2 Proposals**
 - **Option 1 – Original Proposal**
 - **Option 2 – New Proposal**





Option 1 - Proposed Terms

- **Maximum Cost - \$3.5 million**
- **Funding - 100% Rosen**
- **Rosen to remove bridge upon County's request at any time in the future at no cost to County when:**
 - **OCCC property is developed, and**
 - **County bridge to Peabody Garage and Pointe Orlando is completed**





Option 2





Option 2 - Proposed Terms

- **Rosen/County determine alignment**
- **Budget to be determined in 3-4 weeks**
- **Funding:**
 - **Rosen funds bridge on his property**
 - **County funds bridge on OCCC**
- **Rosen designs and builds entire bridge**





Issues

- **County approval of design**
- **Bridge Alignment/Cross Section**
- **Amenities**
- **Cost unknown**
- **County funding not currently available**
- **Schedule**



PRESENTATION OUTLINE

- Background
- Current Projects
- Transit Lanes
- Rosen Plaza Bridge
- **Next Steps**



Next Steps

- **Finalize Alignment/Cross Section**
- **Develop Cost Estimate**
- **Determine Cost-Sharing**
- **Negotiate MOU Terms**
- **Develop Agreement**
- **Feasibility Study/Master Plan for future bridge connectivity**

International Drive Proposed Pedestrian Bridges



**Board of County Commissioners
December 11, 2012**