



Board of County Commissioners

Public Hearing

December 11, 2012



Isleworth PD/LUP

Case: CDR-12-09-197

Project: Isleworth Planned Development/Land Use Plan (PD/LUP) - Substantial Change

Applicant: John M. Florio

District: 1

Request: To consider a substantial change to the approved Isleworth Planned Development/Land Use Plan (PD/LUP) to convert the land use of a ~0.433-acre portion of an existing golf course/open space tract to residential for one (1) single family lot.



Isleworth PD/LUP

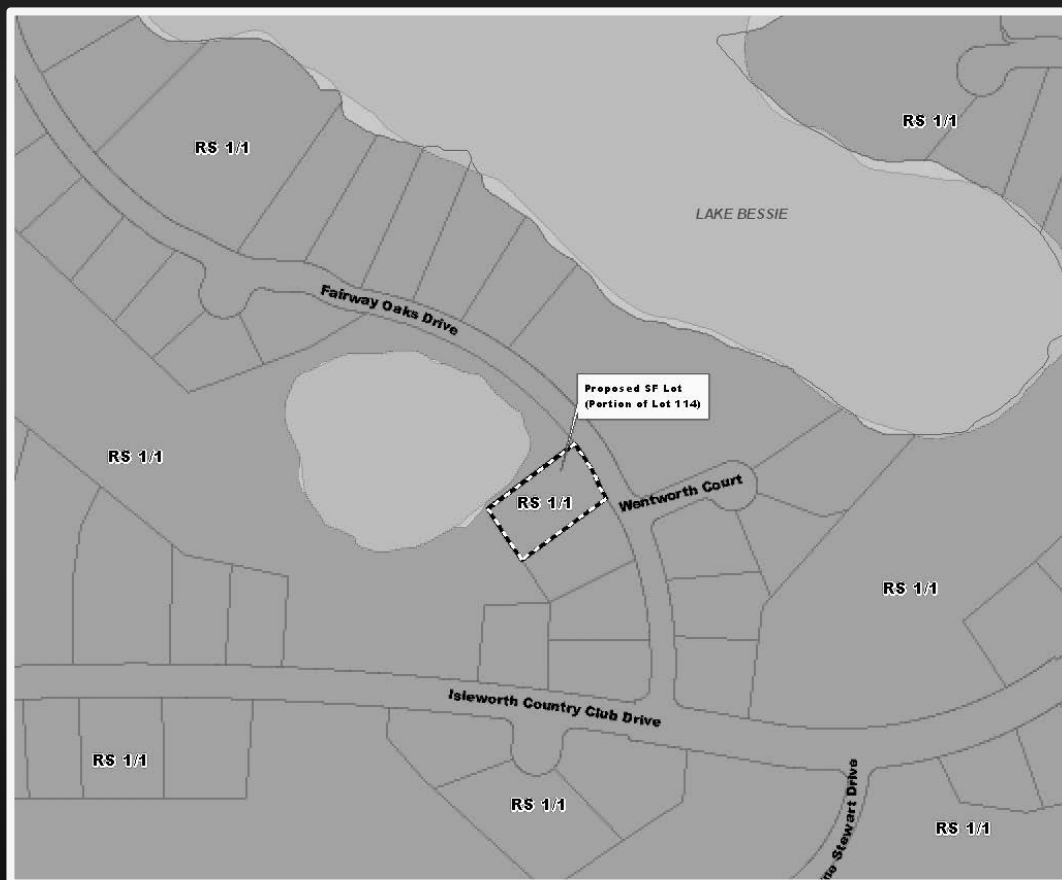
Zoning

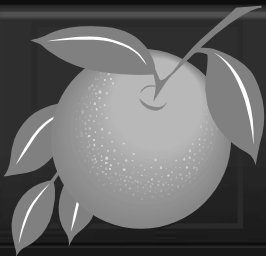




Isleworth PD/LUP

Future Land Use





Isleworth PD/LUP

Action Requested

- **Find the request consistent with the Comprehensive Plan and approve the Substantial Change to the approved Isleworth PD/LUP dated “Received September 25, 2012” subject to the three (3) conditions in the staff report.**