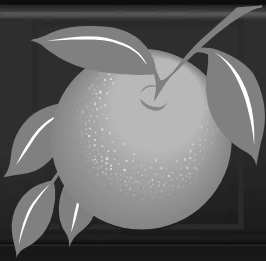




***Board of County Commissioners***

# **Public Hearings**

July 12, 2016



## **Kerina Parkside PD / Parkside Tract 11 Preliminary Subdivision Plan (PSP)**

**Case:** PSP-15-07-220

**Project:** Kerina Parkside PD / Parkside Tract 11 PSP

**Applicant:** Miranda F. Fitzgerald,  
Lowndes, Drosdick, Doster, Kantor & Reed, P.A.

**District:** 1

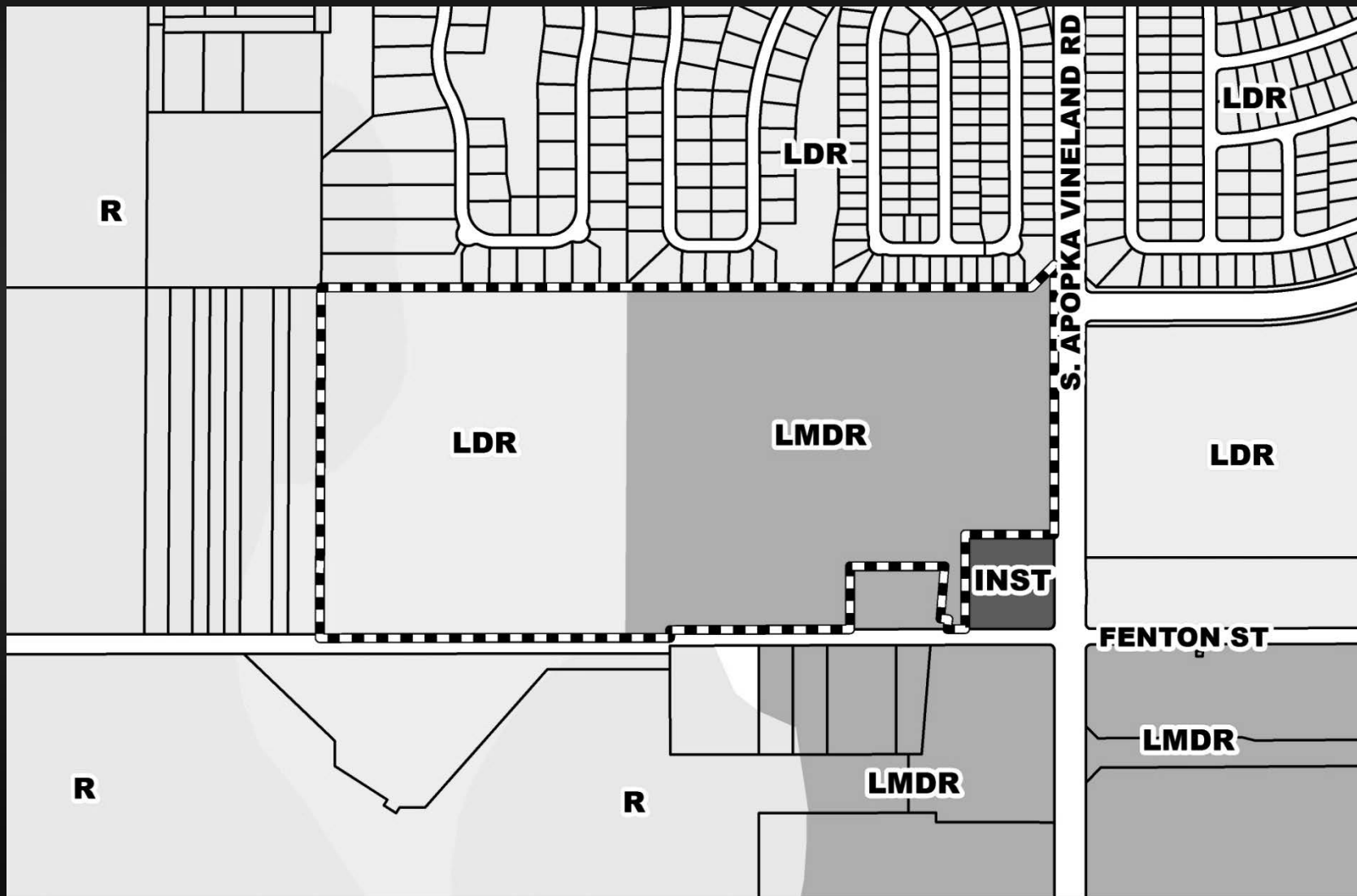
**Acreage:** 79.79 gross acres

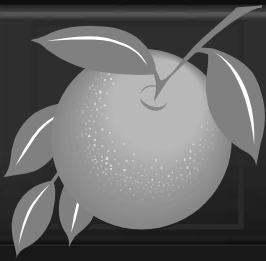
**Request:** To subdivide 79.79 acres in order to construct 229 single-family residential dwelling units within a gated community.



# Kerina Parkside PD / Parkside Tract 11 Preliminary Subdivision Plan (PSP)

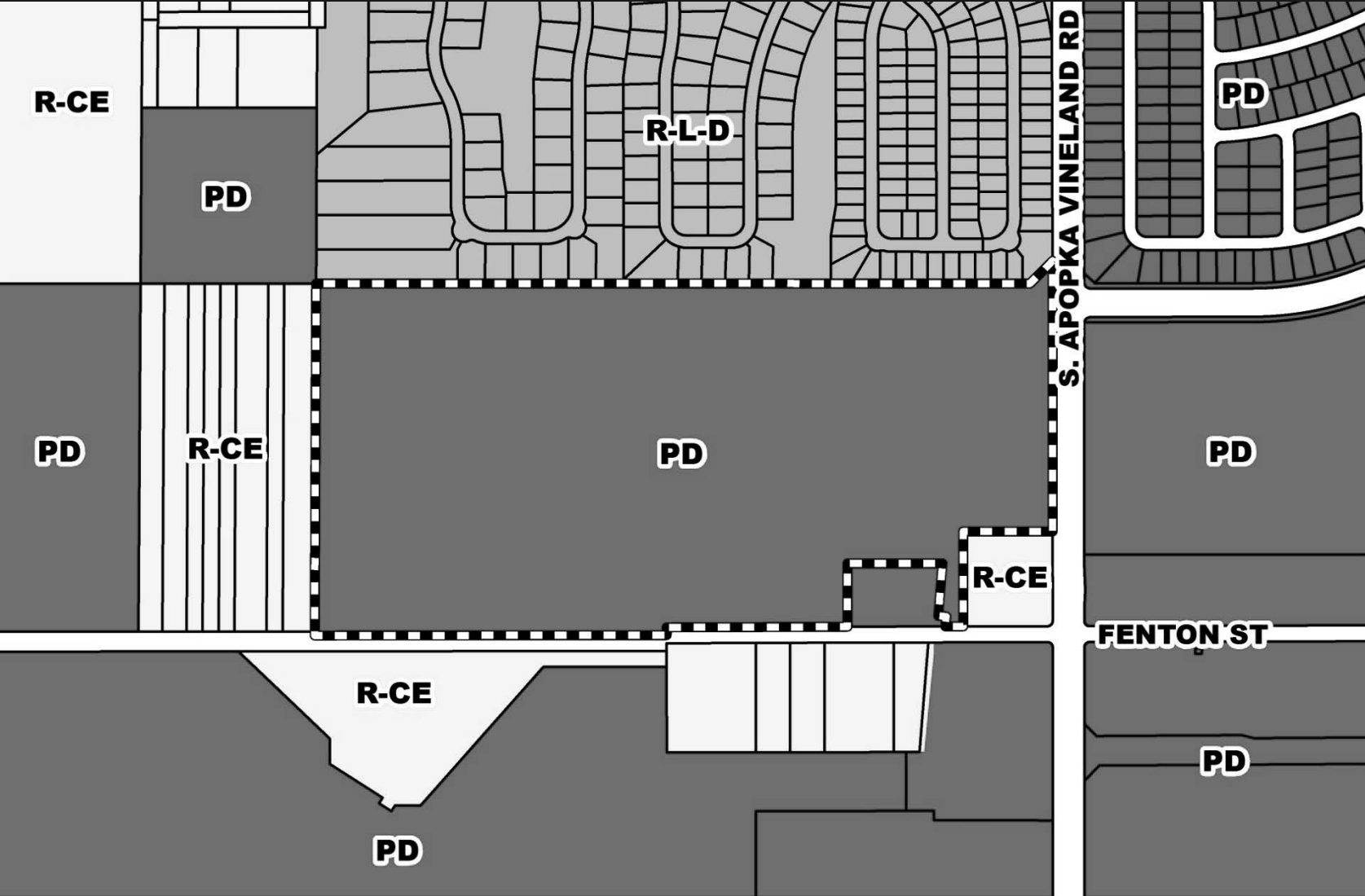
Future Land Use Map

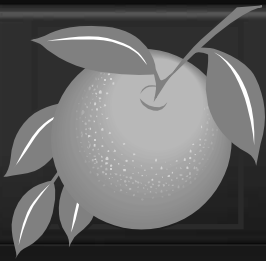




# Kerina Parkside PD / Parkside Tract 11 Preliminary Subdivision Plan (PSP)

Zoning Map



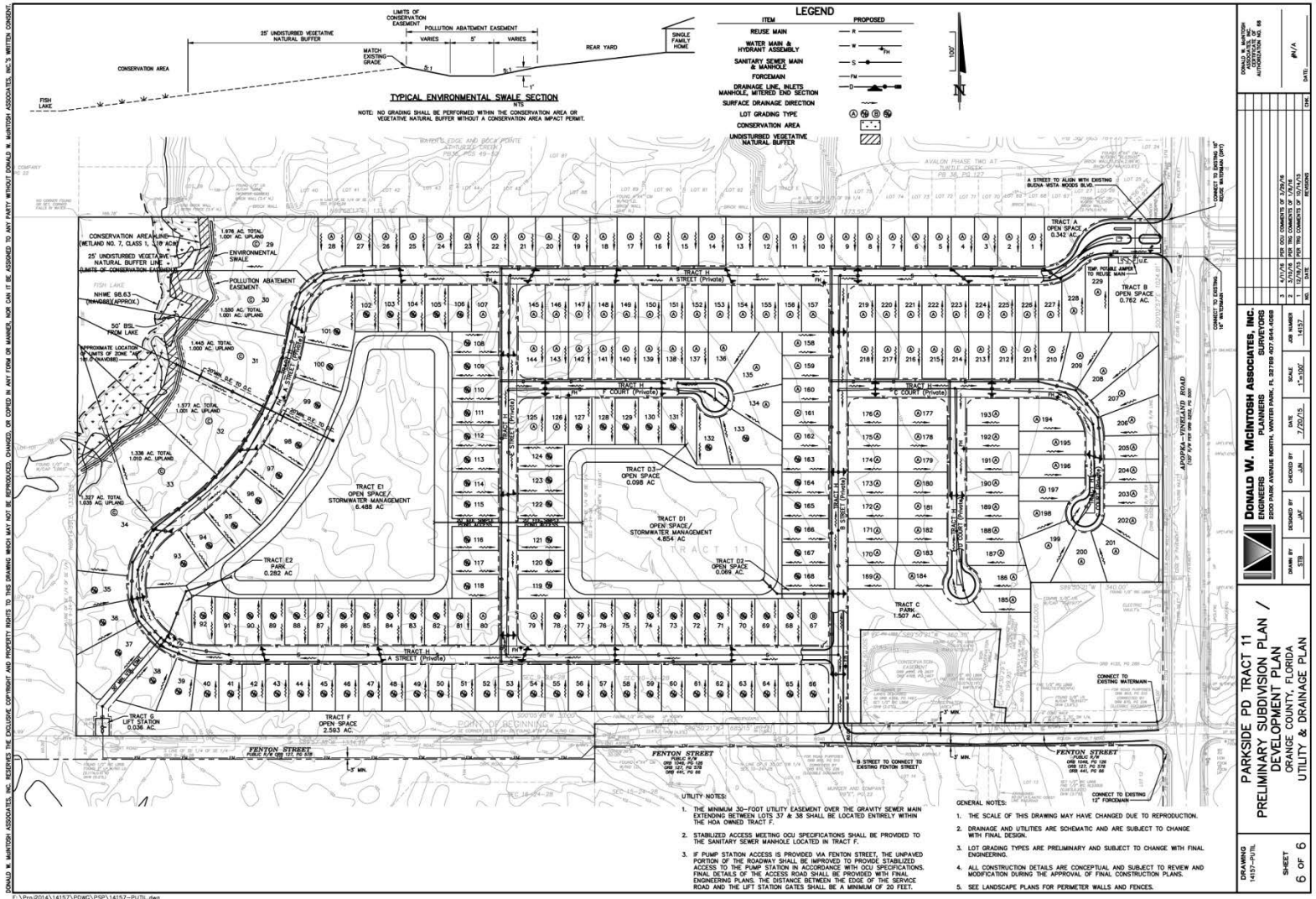


# Kerina Parkside PD / Parkside Tract 11 Preliminary Subdivision Plan (PSP)

Aerial Map



# Kerina Parkside PD / Parkside Tract 11 Preliminary Subdivision Plan (PSP)





# Action Requested

**Make a finding of consistency with the Comprehensive Plan (CP) and approve the Kerina Parkside PD / Parkside Tract 11 Preliminary Subdivision Plan dated “Received April 11, 2016”, subject to the conditions listed under the DRC Recommendation in the Staff Report.**

**District 1**



***Board of County Commissioners***

# **Public Hearings**

July 12, 2016