

# EXPLORE OUR PARKS



With Commissioner Christine Moore  
and School Board Members



Christine Moore  
Commissioner



Karen Castor Dentel  
Member District 6



Melissa Byrd  
Member District 7

## Fun-Filled Activities

**Students and Parents** – Join Orange County Commissioner District 2 Christine Moore and friends to explore our parks. Families should wear comfortable shoes, and bring paper and pencils. Adults must remain with children. Students can earn a Certificate of Completion from Orange County Parks and Recreation.



**Saturday, March 16, 2019**

Choose One	PARK	ADDRESS	TIME
	Trimble Park	5802 Trimble Park Rd, Mt Dora, FL 32757	9 am – 10:30 am
	Magnolia Park	2929 S Binion Rd, Apopka, FL 32703	Noon – 1:30 pm
	Barnett Park	4801 W Colonial Dr, Orlando, FL 32808	3 pm – 4:30 pm



**For more information:  
407-836-6200**



# EXPLORE OUR PARKS



*Collaborative learning  
opportunity offered  
through Orange County  
Parks & Recreation  
and Orange County  
Public Schools*

***Fun-Filled  
Activities***



**Dear Students,**

Our Orange County Parks are filled with animals, birds, insects, and plants. Have you ever wondered about them enough to explore further? We have developed fun-filled, free activities which will help you excel in science. I hope you will take a morning or late afternoon between Spring Break and April 30 to visit Barnett, Trimble park, or Magnolia parks. If you complete 30 minutes of activities, you can earn a certificate from Orange County Parks & Recreation.

I trust you will explore a park this spring!  
Commissioner Christine Moore



- ***Fun-filled activities***
- ***Free for families***
- ***Fit for learning science***



**Orange County  
Public Schools**



# PASSPORT INSTRUCTIONS



## Student Information

- 1) Locate the Super Science Center which contains laminated parent guides
- 2) Engage in the fun activities with paper & pencil brought from home
- 3) Return completed paper and passport to your classroom teacher
- 4) Receive an Orange County Certificate of Completion

### PUNCH BOX UPON COMPLETION (Located in Super Science Center)

**A***Florida Plants and Animals Respond to Weather***B***Dormant and Active Plants***C***Plants and Animals Impact the Environment***D***Solutions to Negative Impact*

## Parent Information

- 1) Parent/Guardian transport your student to one of three Orange County Parks



### Trimble Park

5802 Trimble Park Rd, Mt Dora, FL 32757



### Magnolia Park

2929 S Binion Rd, Apopka, FL 32703



Barnett Park - 4801 W Colonial Dr, Orlando, FL 32808

**DISCLAIMER: PLEASE ENJOY YOUR "EXPLORE OUR PARKS" EXPERIENCE. NO ORANGE COUNTY PUBLIC SCHOOL STUDENT IS REQUIRED TO PARTICIPATE IN THIS PROGRAM. PARENTS AND STUDENTS SHOULD ENTER THOSE PARKS AT THEIR OWN RISK. PARENTS AND STUDENTS SHOULD AVOID CONTACT WITH ALL WILDLIFE.**

# EXPLORE OUR PARKS

## STUDENT GUIDE

(Copy the activity sheet and return to classroom teacher).



### RECORD OBSERVATIONS

**A) Florida Plants and Animals Respond to Weather**

**B) Dormant and Active Plants**

**C) Plants and Animals Impact the Environment**

**D) Solutions to Negative Impact**

### Vocabulary Words

(Note to adult: try to use each word with student a minimum of three times)

**Dormant** - inactive, asleep

**Camouflage** - to disguise or cover

**Observe** - to gather information using your senses – sight, sound, taste, touch, smell

**Saw Palmetto** - used for medicine and food for bears

**Contaminated** - poisoned, made toxic

**Organism** - any living things

**Impact** – to make a strong connection

**Conservation** – to save something such as a resource or energy

**Science Fast Fact #1** - Some plants and animals become dormant in the winter to conserve energy. Think of bears as they hibernate (or sleep) during the winter.

**Science Fast Fact #2** – Some of the nutrients in storm water or fertilizers contaminate our waterways. It is important to pay attention to what drains into our lakes.

**The following animals and plants are common in Orange County Parks**



Butterflies



Squirrel



Gopher Tortoise



Florida Black Bear



Saw Palmetto





# EXPLORE OUR PARKS

## ADULT GUIDE Park Science Activities (A-D)



### A) Florida Plants and Animals Respond to Weather

#### LESSON:

**Parent Say:** The Artic Fox looks different in these two pictures.

**Parent Ask:** Why do you think their fur changes in the winter? (possible student answers: for camouflage, protection, blending in)

**Parent Say:** Where winters are much colder than Florida, some animals change colors from dark to white. Why do you think Florida animals don't do that? (possible student answer: little to no snow in Florida and dark color stands out in snow)

#### ACTIVITY:

Search out an animal in the park. Talk about what you observe. Sample questions: Does its color allow it to blend in with the surroundings?

#### RECORD FINDINGS ON PAPER:

Draw what you find in Box A on your paper from home. Write one sentence telling what you see. Use the word *camouflage* in your writing.



Polar Arctic Fox with winter fur

Polar Arctic Fox with summer fur

### B) Dormant and Active Plants

#### LESSON:

**Parent Say:** The tree in this picture is actively producing leaves because the weather is warm and sunny.

**Parent Ask:** How do dormant plants save energy when it is cold and less sunny? (possible answer: by producing fewer leaves and less fruit)

#### ACTIVITY:

Search out active and dormant leaves in the park.

#### RECORD FINDINGS ON PAPER:

Draw what you see in Box B on your paper from home. Write one sentence telling what you see. Use the word dormant in your writing.



### C) Plants and Animals Impact the Environment

#### LESSON:

**Parent Say:** The Florida Black Bear impacts the environment by eating the saw palmetto and other plants.

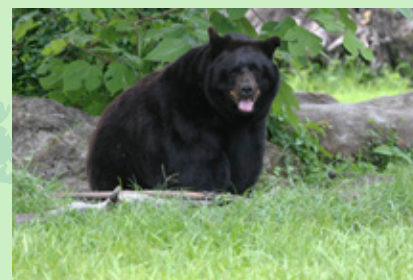
**Parent Ask:** : Can you find any other ways that plants and animals impact or connect with the environment in this park? (possible answer: squirrels eat acorns, cows eat grass and their waste fertilizes the grass)

**Parent Ask:** What would happen if we took away one of these organisms? (possible answer: black bear may die, other organisms may die, become threatened, or become extinct)

**ACTIVITY:** Search out any food sources or lack of food sources. Find & dispose of any trash.

#### RECORD FINDINGS ON PAPER:

Draw what you find in Box C on your paper from home. Write one sentence telling what you found. Use the words impact or organism in your writing.



### D) Solutions to Negative Impact

#### LESSON:

**Parent Say:** Humans can have a negative impact on parks which could include closings for contaminated water, or lakes turning a fuzzy green, or trash on the ground.

**Parent Ask:** Can you think of ways that we can solve the problems created by people impacting the environment negatively? (possible answers: park clean ups, conservation, changing bad habits)

**ACTIVITY:** Do one small clean-up type activity at the park today.

#### RECORD FINDINGS ON PAPER:

Draw one of your solutions in Box D on your paper from home and write about it. Use the word conservation in your writing.



### Standards:

- ~ SC.4.L.17.1: Compare the seasonal changes in Florida plants and animals to those in other regions of the country.
- ~ SC.4.L.17.4: Recognize ways plants and animals, including humans, can impact the environment.
- ~ SC.5.L.17.1 Compare and contrast adaptations displayed by animals and plants that enable them to survive in different environments such as life cycles variations, animal behaviors, and physical characteristics.



DISCLAIMER: PLEASE ENJOY YOUR "EXPLORE OUR PARKS" EXPERIENCE. NO ORANGE COUNTY PUBLIC SCHOOL STUDENT IS REQUIRED TO PARTICIPATE IN THIS PROGRAM. PARENTS AND STUDENTS SHOULD ENTER THOSE PARKS AT THEIR OWN RISK. PARENTS AND STUDENTS SHOULD AVOID CONTACT WITH ALL WILDLIFE.