

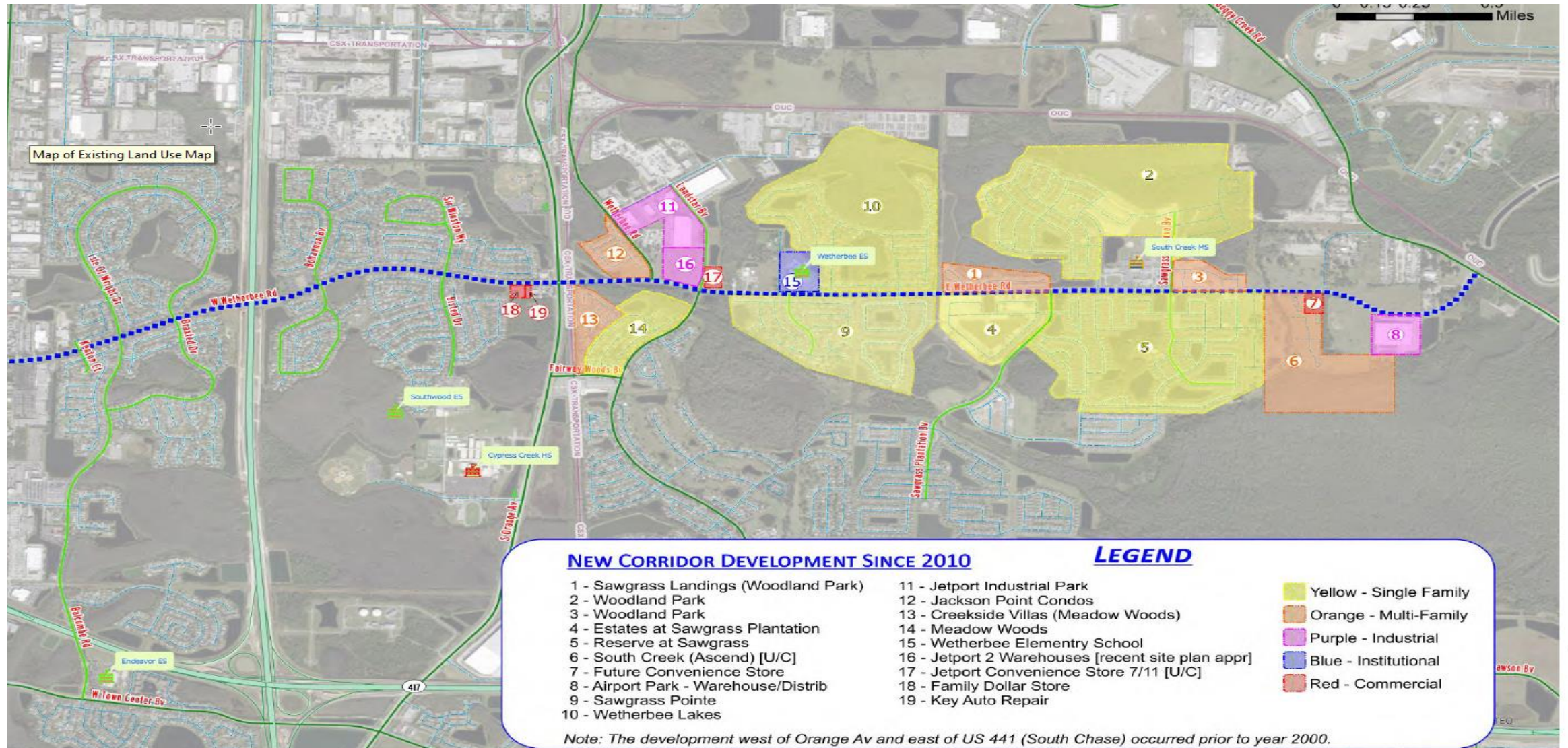
Southchase PD Parcel 44

CDR-21-11-337

Status of Traffic Operation Analysis

- As a public citizen how would I go about finding out more info on this or see the report?

20 New Developments Since 2010 using Wetherbee



Schools

- Application: OC-22-016 Southchase PD
 - Dated August 19, 2022
 - Orange County Public School's formal school capacity determination letter established that capacity is **NOT AVAILABLE**
- Parcel 44 is **not vested** for school concurrency.
- 280 Dwelling Units X 0.286 = **80** new students
 - Ascend South Creek and Bainbridge Nona North add an additional **210** students. Total new students **290!**
- Southwood Elementary School is too close for bus service would cause long walk around Single-Family Homes or cut through the properties...

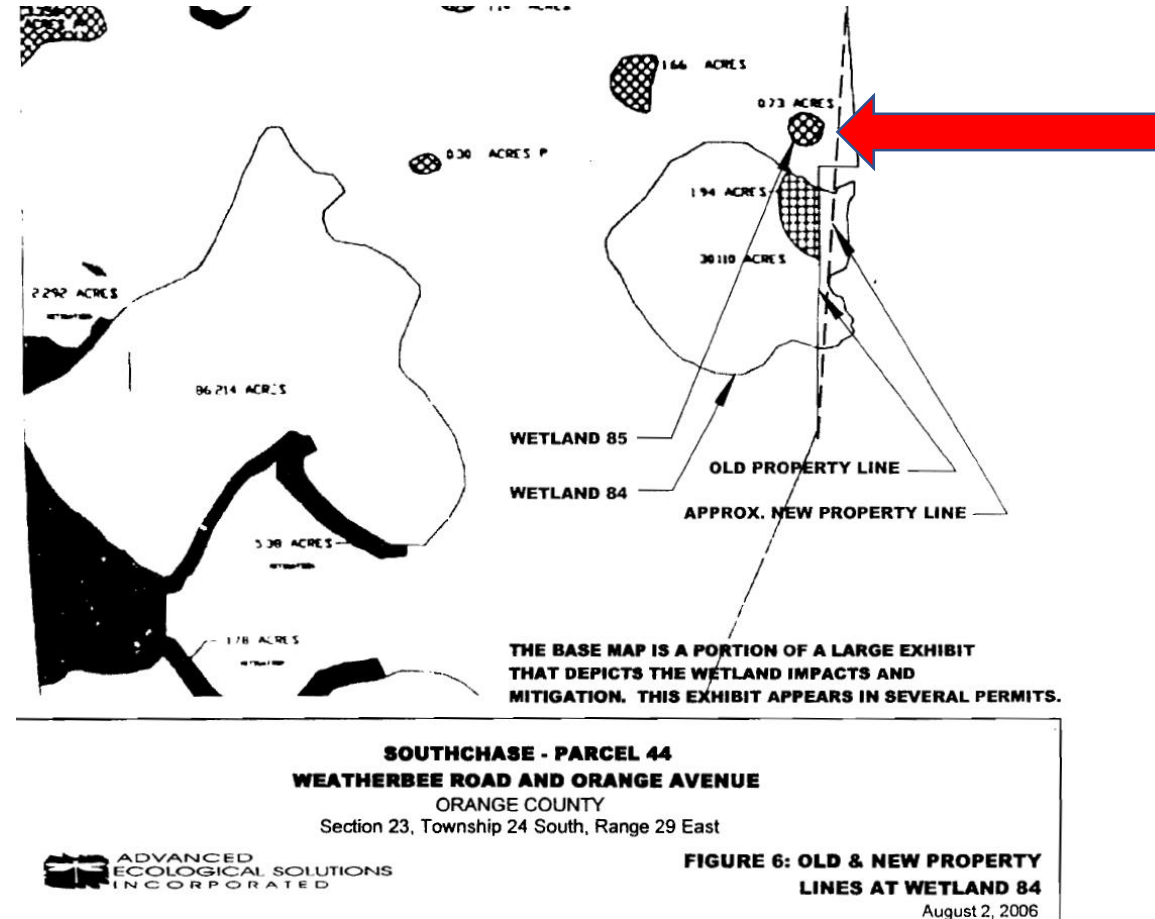
Overburdened Schools

- Southwood Elementary Capacity is at **94%** as of February 2023
- South Creek Middle Capacity is at **100%** as of February 2023
- Cypress Creek High Capacity is at **125%** as of February 2023
- Orange County Elementary is at **89%** as of February 2023
- Orange County Middle School is at **91%** as of February 2023
- Orange County High School is at **101%** as of February 2023

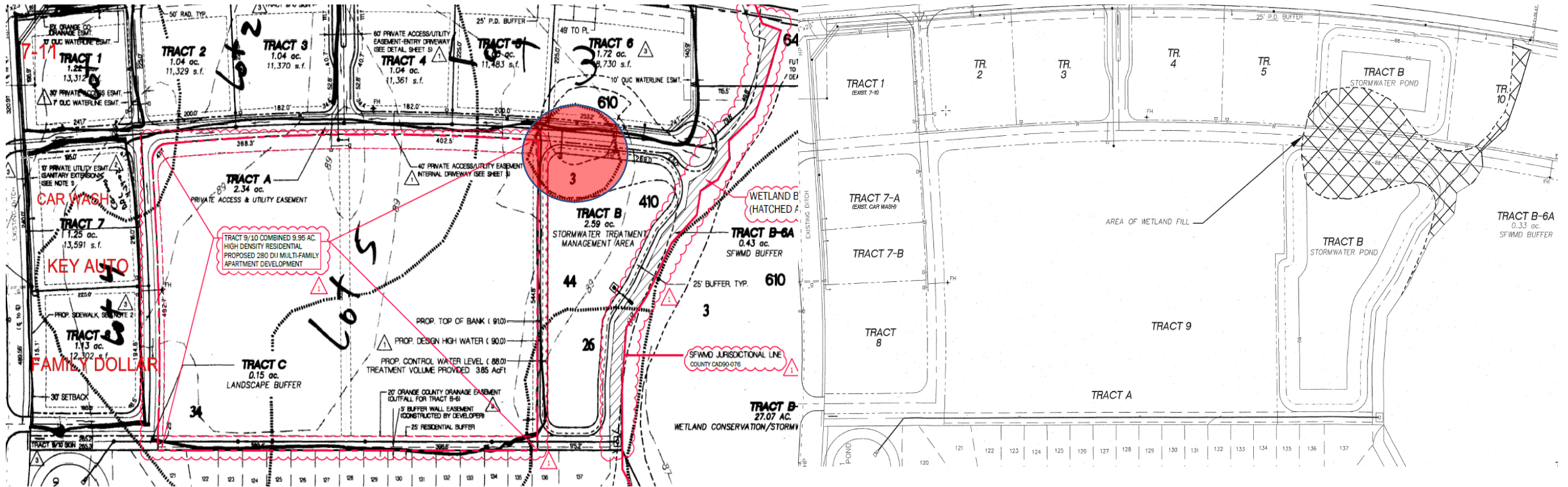
- https://cdn5-ss15.sharpschool.com/UserFiles/Servers/Server_54619/File/Departments/Student%20Enrollment/Enrollment%20Summaries/2022-23/Enrollment%20Summary%2002%2001%2023.pdf

Wetland 85 Destruction

.73 Acres of
wetland
destruction not
mentioned in plan.



No plan for wetland fill?



https://apps.sfwmd.gov/entsb/docdownload?object_id=0900eeea858cc938