

SITEPLAN

Intermezzo is ideally situated to take prime advantage of all that The Rialto has to offer. Directly north is the sparkling Spring Lake. On the other side, a park-like setting acts as a buffer between Intermezzo and the shopping and dining opportunities of The Rialto. Whether you want to explore an art gallery or relax in serene privacy on your balcony, Intermezzo at The Rialto truly brings the Destination Home.

A DESTINATION THAT EXCEEDS

YOUR
EXPECTATIONS.

Inside your personal residence at Intermezzo is a destination entirely separate, yet exquisitely connected to the greater whole. There are a number of unique floor plans available, as well as a generous offering of standard features.

RESIDENTIAL AMENITIES

- Private Balconies or Terraces
- Large Master Closets
- Full-height Windows in Select Homes
- Stainless Steel Whirlpool® Appliances
- Granite Countertops in Kitchens and Bathrooms
- Oversized Baths



Of course, sometimes you need privacy. That's why each residential unit in Intermezzo is designed to keep personal spaces away from your public spaces. But it's just as easy to join the life of the party below, along the streets of The Rialto. Simply venture onto your private balcony and take it all in. Invite a few friends and family members. Trust us...you'll have plenty of room. Meeting your expectations isn't enough. Intermezzo is a destination because we've succeeded at exceeding those expectations, creating a life far beyond ordinary.

If The Rialto is the ultimate destination in the Dr. Phillips area, then consider Intermezzo at The Rialto the ultimate destination within a destination. You're right at the center of a world of indulgent pleasure. Opulent shopping opportunities await your afternoon strolls, and fine dining in The Rialto's restaurants are the rule, rather than the exception. Indulge yourself at a nearby spa, or buy a handcrafted piece of fine jewelry, or visit a neighborhood art gallery to open a world of culture. This urban adventure is just waiting for your exploration.

COMMUNITY AMENITIES

- Spacious Club Lounge for entertaining, including a kitchen and bar
- Cyber Café with wireless Internet stations
- Video Gaming Areas
- Media Room
- Rooftop Pool overlooking Spring Lake
- State-of-the-Art Fitness Center
- Gated Garage
- 24-hour Concierge Service



Beyond the gates of Intermezzo, you'll find subtle touches that separate destinations from mere buildings. Like sculpted gardens for quiet contemplation.

A DESTINATION THAT'S AN INDULGENCE.



Or niches and gazebos for intimate gatherings. Perhaps all you're looking for is a private spot to read that great new novel in pristine peace. Taking a page from the finest destinations of the world, the designers of Intermezzo realized that it's the small details that add up to create something great. Something memorable. A life as a destination worth visiting, time and time again.

DEVELOPER STORY

Wood Partners is dedicated to building communities that stand the test of time. An innovator in the field, Wood Partners has led the nation in sustainable development, bringing vitality to urban centers from Florida to California. As the United States enters the 21st century, the challenges of sprawl and suburban development are at the forefront of domestic concern.

Wood Partners considers it a priority of their business to demonstrate to the population that urbanism is an ideal choice for a worthwhile living arrangement by producing projects that have become landmarks across the continent. Intermezzo at The Rialto is another example of this building ethic: producing communities that people can be proud of, and that citizens

can engage with, rather than separate from. This standard of excellence, of civic duty, separates Wood Partners from other developers and puts them at the forefront of future global development.

The past successes of projects like Solaire at the Plaza in Orlando, Eclipse Buckhead in Atlanta and Esplanade in Jacksonville prove that Wood Partners is dedicated to developing a lifestyle—not just a building. Current projects like SixTen Franklin and The Boulevard in Tampa, Horizon in Atlanta, The Glass House in Denver, and the Edge in West Palm Beach, will join Intermezzo at The Rialto to become the new benchmarks for innovative urban development.



SOLAIRE



ESPLANADE

INTERMEZZO
AT THE RIALTO

INTERMEZZO AT RIALTO

MODEL PRICE RANGES

Buildings:

Model	Description	Unit Size		Price Range
A6	One Bedroom One Bath	Living Area	1,001	Only ONE unit price currently available \$381,900
		Terrace	0	
		Total	1,001	
A3	One Bedroom One Bath	Living Area	1,124	\$367,900 to \$373,900
		Terrace	0	
		Total	1,124	
A2	One Bedroom One Bath	Living Area	1,134	\$405,900 to \$409,900
		Terrace	0	
		Total	1,134	
A7	One Bedroom One Bath	Living Area	1,177	Only ONE unit price currently available \$393,900
		Terrace	0	
		Total	1,177	
B2C	Two Bedroom Two Bath	Living Area	1,196	Only ONE unit price currently available \$403,900
		Terrace	0	
		Total	1,196	
A4	One Bedroom One Bath	Living Area	1,238	\$397,900 to \$406,900
		Terrace	0	
		Total	1,238	
B2	Two Bedroom Two Bath	Living Area	1,270	\$425,900 to \$433,900
		Terrace	0	
		Total	1,270	
B1	Two Bedroom Two Bath	Living Area	1,273	\$426,900 to \$432,900
		Terrace	0	
		Total	1,273	
B4	Two Bedroom Two Bath	Living Area	1,322	\$418,900 to \$434,900
		Terrace	0	
		Total	1,322	
B2A	Two Bedroom Two Bath	Living Area	1,325	\$433,900 to \$448,900
		Terrace	0	
		Total	1,325	
		Living Area	1,326	\$429,900

Prices and Sizes subject to change without notice.

Model	Description	Unit Size		Price Range
		Terrace	0	
B6A	Two Bedroom Two Bath	Total	1,326	to \$435,900
B5	Two Bedroom Two Bath	Living Area	1,352	\$463,900 to \$467,900
		Terrace	0	
		Total	1,352	
B6	Two Bedroom Two Bath	Living Area	1,370	\$452,900 to \$473,900
		Terrace	0	
		Total	1,370	
B3	Two Bedroom Two Bath	Living Area	1,395	\$447,900 to \$477,900
		Terrace	0	
		Total	1,395	
B2G	Two Bedroom Two Bath	Living Area	1,421	\$474,900 to \$480,900
		Terrace	0	
		Total	1,421	
B3A	Two Bedroom Two Bath	Living Area	1,431	\$458,900 to \$464,900
		Terrace	0	
		Total	1,431	
C1	Three Bedroom Two Bath	Living Area	1,460	\$494,900 to \$502,900
		Terrace	0	
		Total	1,460	
B2B	Two Bedroom Two Bath	Living Area	1,461	Only ONE unit price currently available \$484,900
		Terrace	0	
		Total	1,461	
B9	Two Bedroom Two Bath	Living Area	1,465	\$510,900 to \$514,900
		Terrace	0	
		Total	1,465	
B8	Two Bedroom Two Bath	Living Area	1,481	Only ONE unit price currently available \$479,900
		Terrace	0	
		Total	1,481	
C2	Three Bedroom Two and Half Bath	Living Area	1,482	Only ONE unit price currently available \$552,900
		Terrace	0	
		Total	1,482	
C3	Three Bedroom Two Bath	Living Area	1,509	Only ONE unit price currently available \$547,900
		Terrace	0	
		Total	1,509	

Prices and Sizes subject to change without notice.

Model	Description	Unit Size		Price Range
		Living Area		
B10	Two Bedroom Two Bath	1,696		Only ONE unit price currently available \$556,900
		Terrace	0	
		Total	1,696	
B15	Two Bedroom Two Bath	1,716		Only ONE unit price currently available \$520,900
		Terrace	0	
		Total	1,716	
C4A	Three Bedroom Two Bath	1,748		Only ONE unit price currently available \$637,900
		Terrace	0	
		Total	1,748	

Prices and Sizes subject to change without notice.

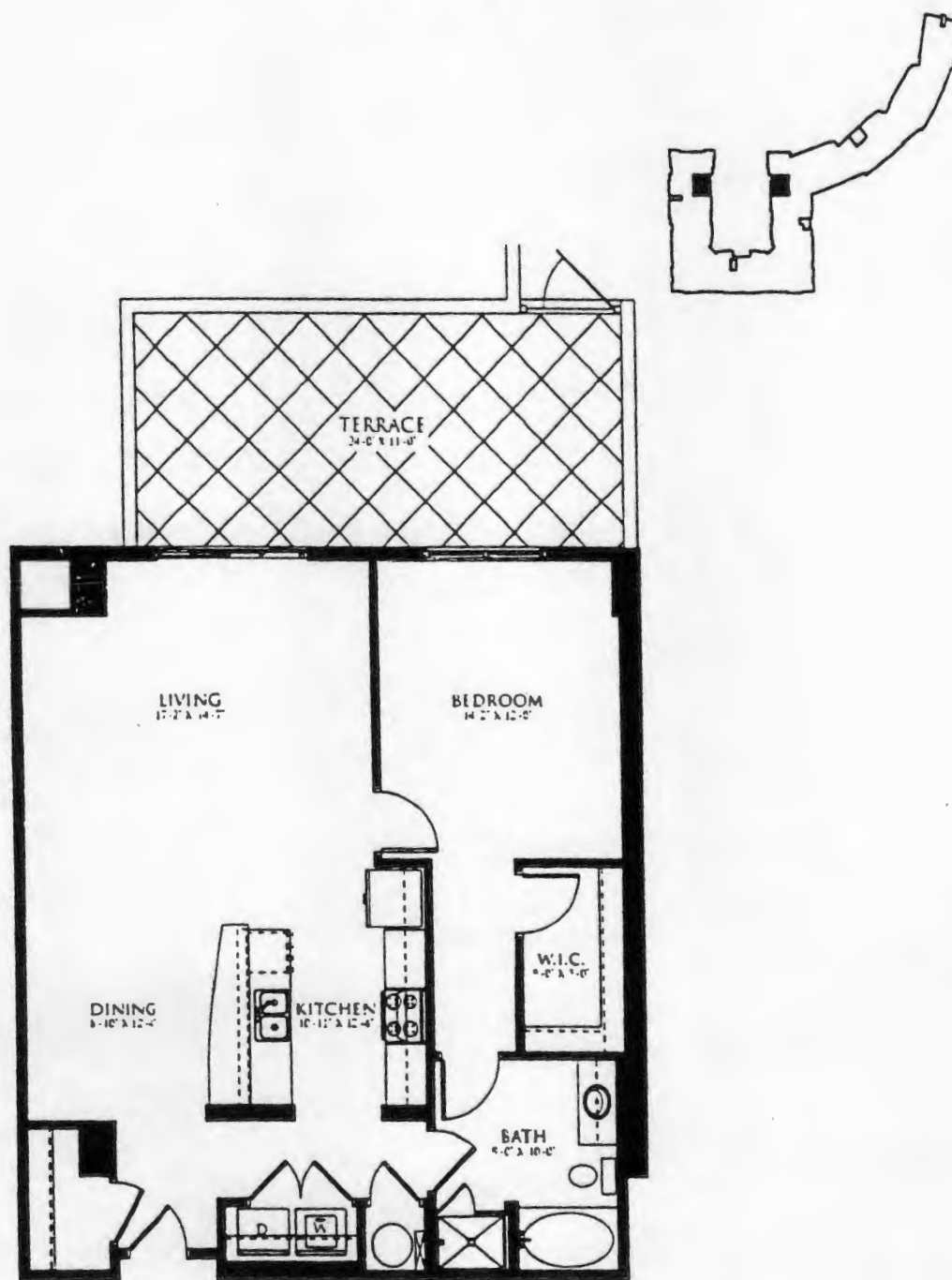
CONFIDENTIALITY NOTE: This document in its electronic and printed formats are confidential. They are the property of Condo Store and are protected by legal privilege. If you are not authorized to possess these documents, be aware that any disclosure, copying, distribution or unauthorized use is prohibited.

User: Lisa O'Connor

Report 201 - Model Price Ranges
Copyright (C) Sitemanageware Inc. 2001-2006

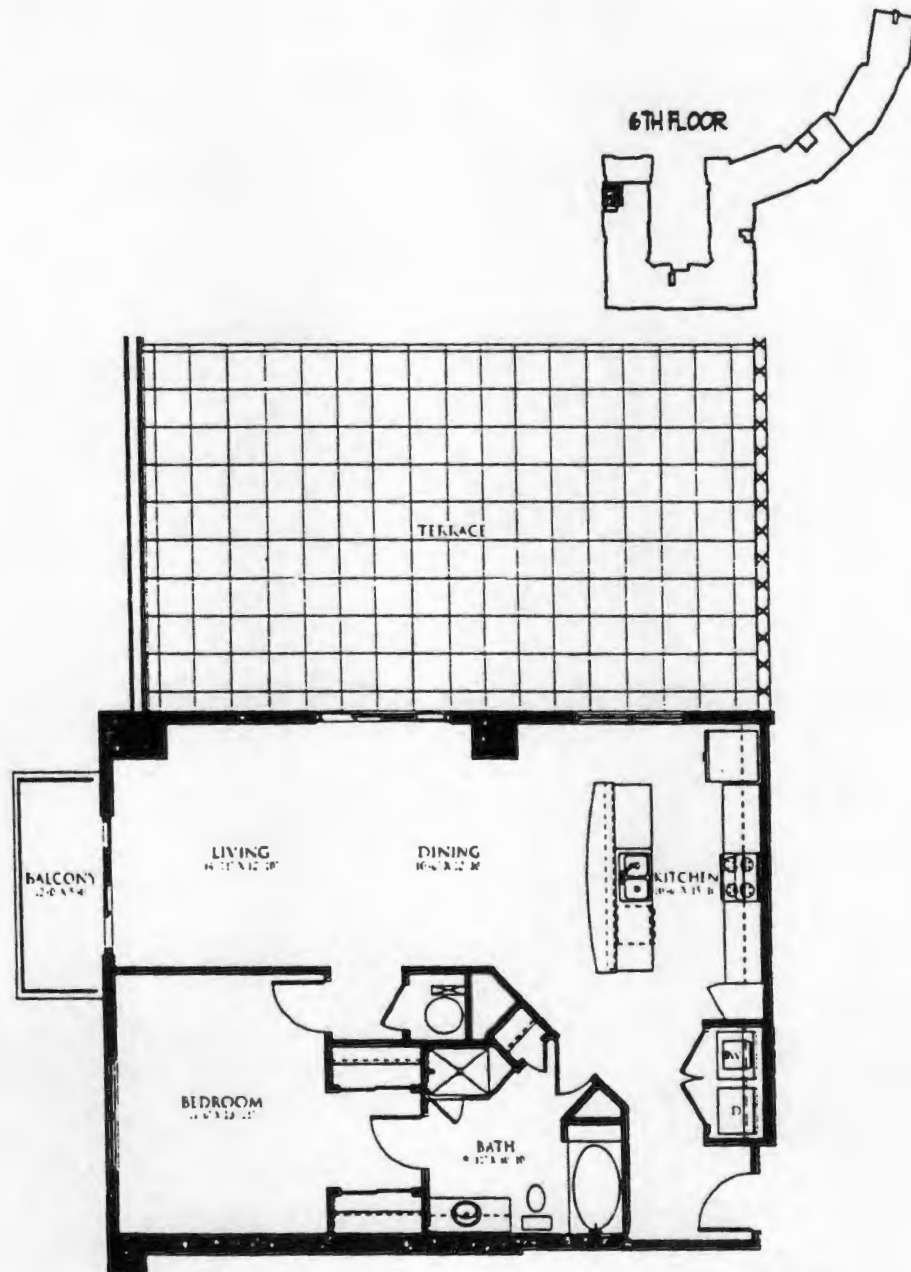
10/03/06 16:25

A1 1 BEDROOM 1 BATH FLOORPLAN



HEATED: 1,050 SQ. FT. TERRACE: 250 SQ. FT. TOTAL: 1,300 SQ. FT.

A8 1 BEDROOM 1 BATH FLOORPLAN



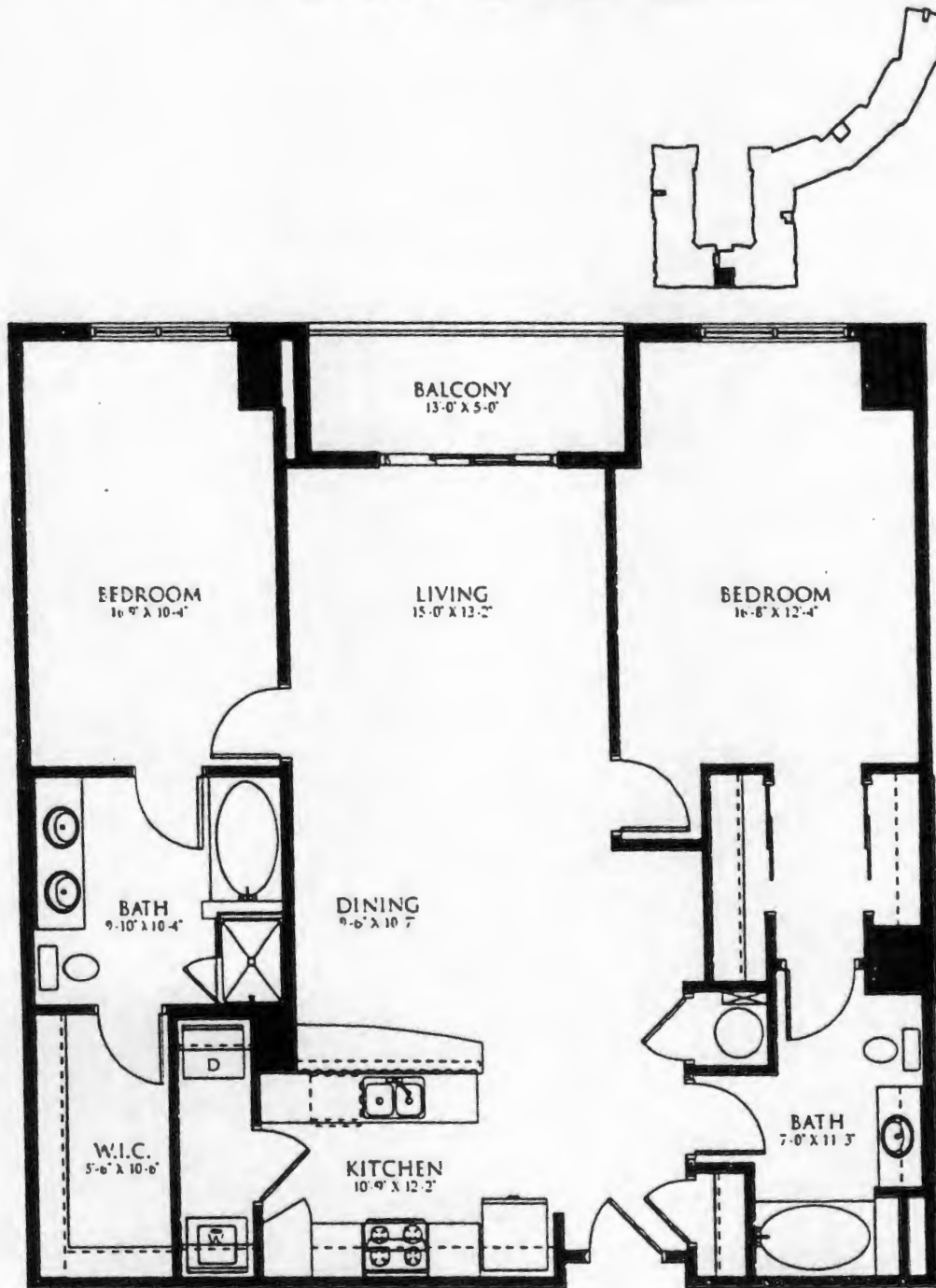
HEATED: 1,000 SQ. FT.

BALCONY: 60 SQ. FT.

TOTAL: 1,710 SQ. FT.

TERRACE: 650 SQ. FT.

B1 2 BEDROOM 2 BATH FLOORPLAN

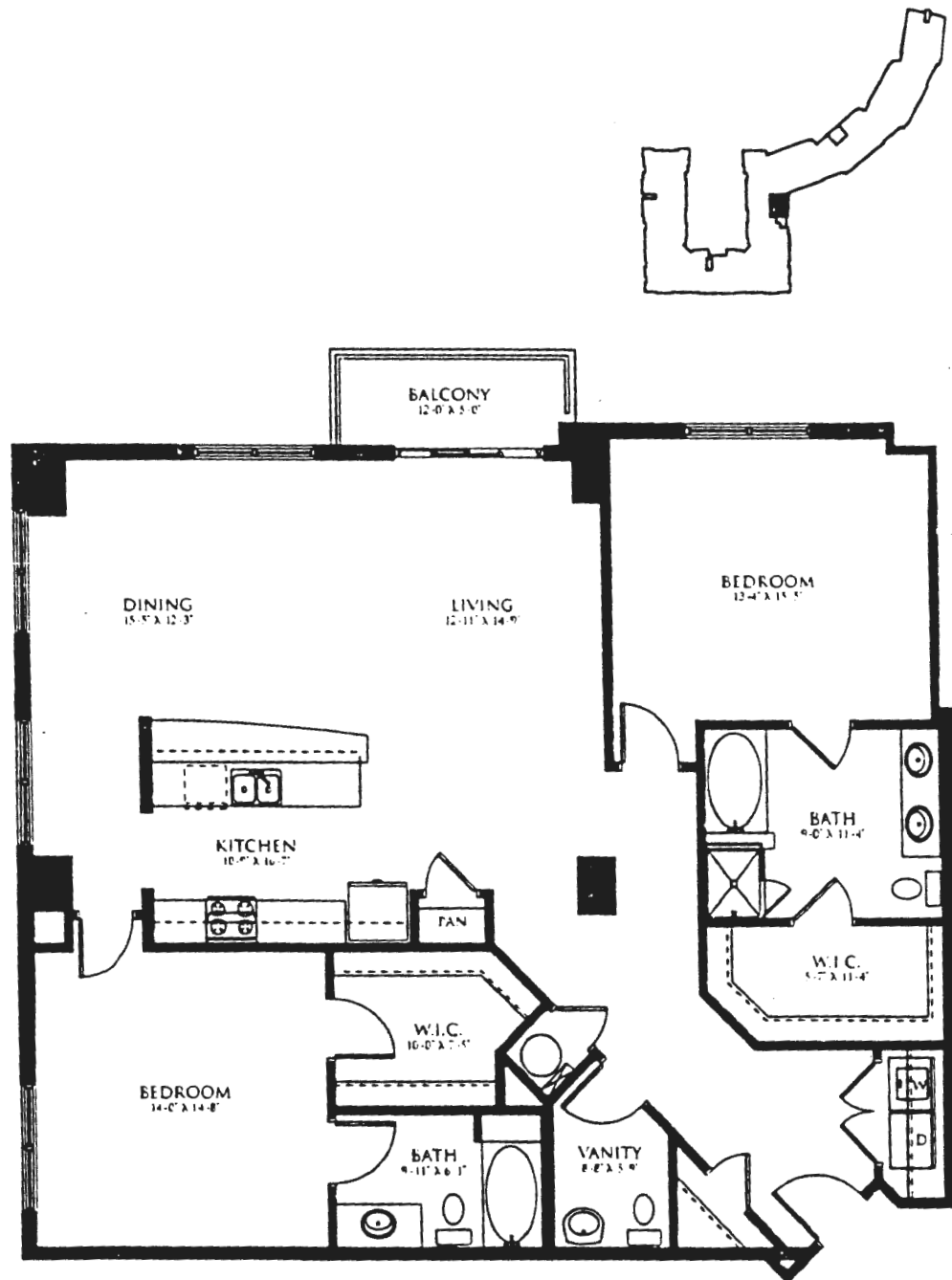


HEATED: 1,300 SQ. FT.

BALCONY: 60 SQ. FT.

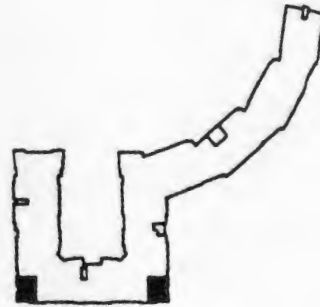
TOTAL: 1,360 SQ. FT.

B15 2 BEDROOM 2.5 BATH FLOORPLAN



HEATED: 1,700 SQ. FT. BALCONY: 50 SQ. FT. TOTAL: 1,750 SQ. FT.

C1 3 BEDROOM 2 BATH FLOORPLAN

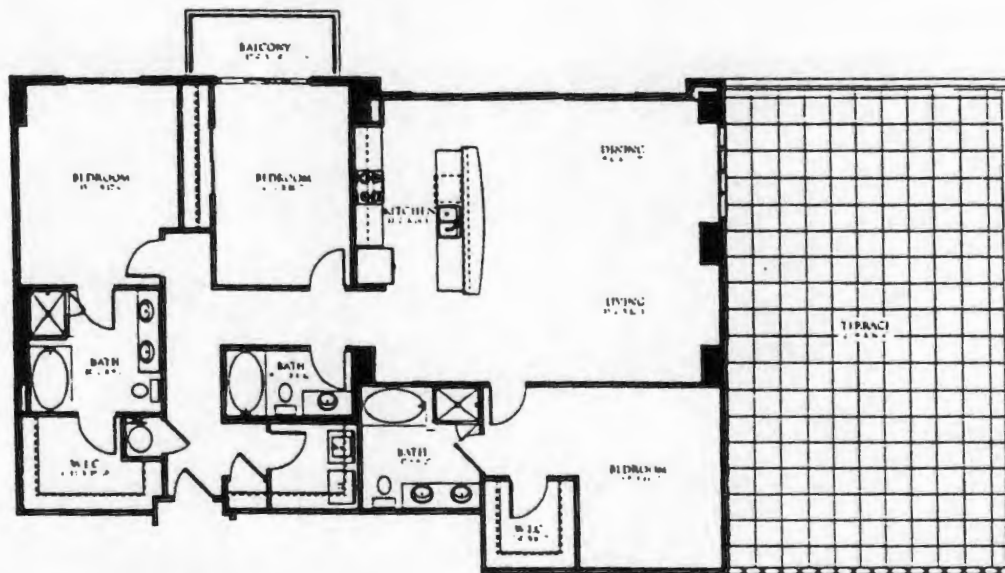
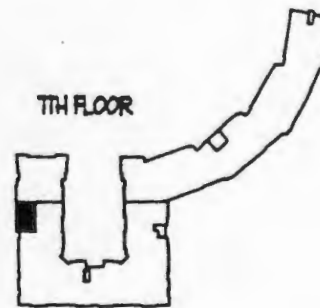


HEATED: 1,450 SQ. FT.

BALCONY: 50 SQ. FT.

TOTAL: 1,500 SQ. FT.

C5 3 BEDROOM 3 BATH FLOORPLAN



HEATED: 1,800 SQ. FT.

BALCONY: 60 SQ. FT.
TERRACE: 750 SQ. FT.

TOTAL: 2,610 SQ. FT.